



Memphis Trust Building

12 South Main St., Memphis, Shelby County
Tennessee

Photographer unknown
ca. 1907

Bologna & Associates, Inc., 60 N. Main
St., Suite 1408, Memphis, TN

West and south elevations of 1904 building,
facing northeast

1 of 9

OCT 6 1980

1980

NOV 25 1980



ca.1910 - MAIN STREET LOOKING
NORTH showing First half of Bank
of Commerce & Trust

Memphis Trust Building
12 South Main St., Memphis, Shelby County
Tennessee

Photographer unknown
ca. 1910

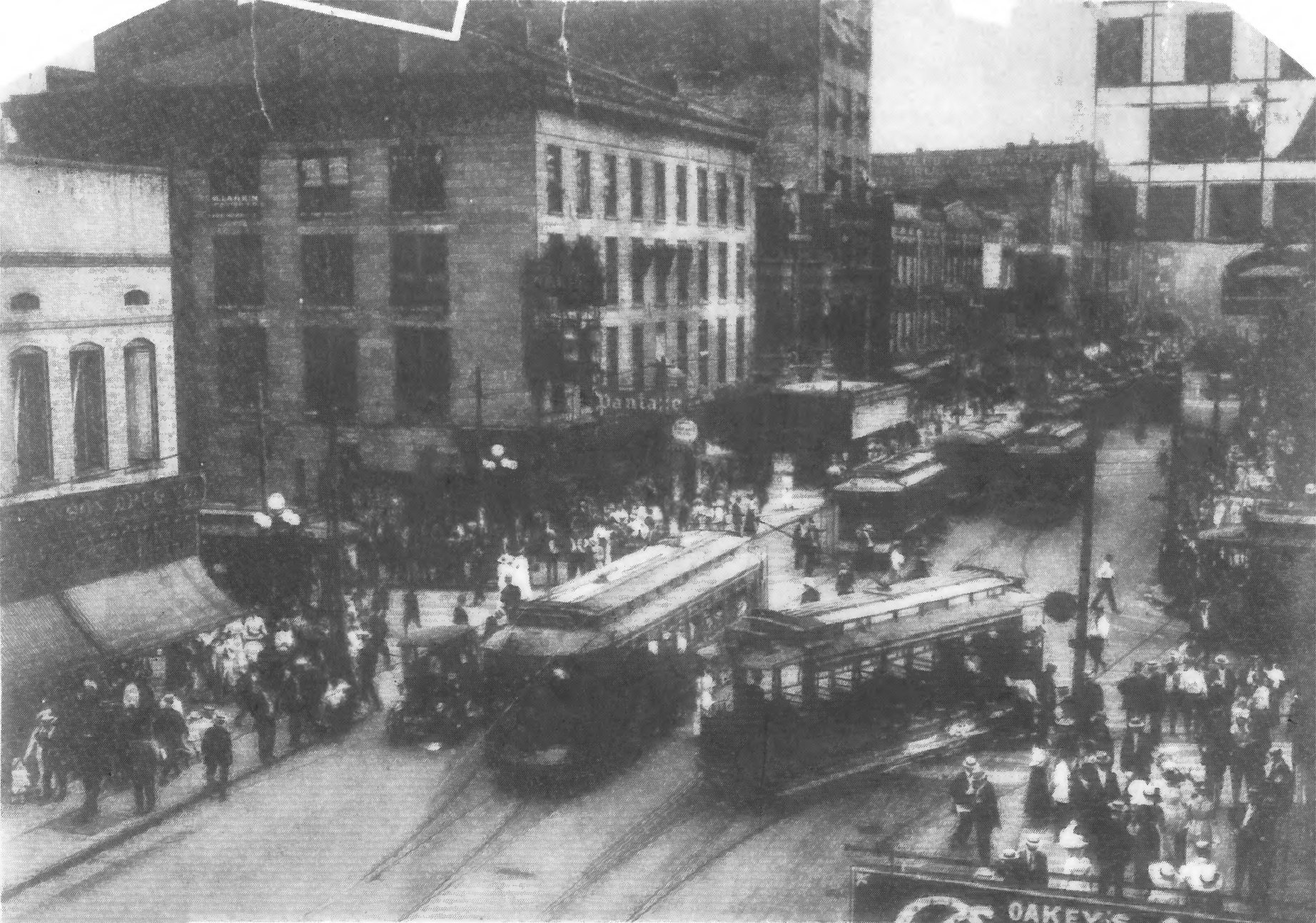
Bologna & Associates, Inc., 60 N. Main
St., Suite 1408, Memphis, TN

West and south elevations of 1904 section,
facing northeast

2 of 9

NOV 25 1980

OCT 6 1980



And here is Main Street looking south from Madison in 1912. It's summertime—and turning the corner off of Main into Madison is one of the famous Summer street cars with its long side steps high up from the ground and which caused many a young woman to blush when she was forced to display her legs to board it. The building showing to the left is a part of the old Moseley-Robinson Drug Store where you used to leave a note for your sweetheart to get later so she could keep her date with you. That was the "Hub of Memphis" then.

Staff Photos by Green Street

DAKEY'S
Deanie

Memphis Trust Building
12 South Main St., Memphis, Shelby County
Tennessee

Photographer unknown
ca. 1912

Bologna & Associates, Inc., 60 N. Main
St., Suite 1408, Memphis, TN

West and north elevations of 1904 section;
photo also shows Hotel Luehrmann under
demolition. Facing south.

3 of 9

OCT 6 1980



MERCE TITLE GUARANTY CO.

ICE CREAM

Memphis Trust Building

12 South Main Street, Memphis, Shelby
County, Tennessee

Photo: Bologna & Associates, Inc.

Date: July 1979

Neg: Bologna & Associates, Inc.

Memphis, Tennessee

West elevation, facing east

4 of 9

NOV 25 1980

OCT 6
1980



Memphis Trust Building
12 South Main Street, Memphis, Shelby
County, Tennessee

Photo: Bologna & Associates, Inc.

Date: July 1979

Neg: Bologna & Associates, Inc.
Memphis, Tennessee

North and west elevations, facing
southeast

5 of 9

NOV 25 1980

OCT 6 1980



UP
BANK

Wm

STEVE'S H&F

Memphis Trust Building
12 South Main Street, Memphis, Shelby
County, Tennessee

Photo: Bologna & Associates, Inc.

Date: July 1979

Neg: Bologna & Associates, Inc.
Memphis, Tennessee

South and west elevations, facing
northeast

6 of 9

NOV 25 1980

OCT 6 1980



Shack

Home for the Homeless
CROCKING

COMMERCE TITLE GUARANTEE

COMMERCE TITLE GUARANTEE COMPANY
TITLE COMPANY INC.

COMMERCE TITLE GUARANTEE
TITLE COMPANY INC.

ICE

Memphis Trust Building

12 South Main Street, Memphis, Shelby
County, Tennessee

Photo: Bologna & Associates, Inc.

Date: July 1979

Neg: Bologna & Associates, Inc.

Memphis, Tennessee

Building base of west elevation, facing
east

7 of 9

OCT 6 1980

NOV 25 1980



Memphis Trust Building

12 South Main Street, Memphis, Shelby
County, Tennessee

Photo: Bologna & Associates, Inc.

Date: July 1979

Neg: Bologna & Associates, Inc.

Memphis, Tennessee

Cap detail of west elevation, facing
northeast

8 of 9

NOV 25 1980

OCT 6 1980



Memphis Trust Building

12 South Main Street, Memphis, Shelby
County, Tennessee

Photo: Bologna & Associates, Inc.

Date: July 1979

Neg: Bologna & Associates, Inc.

Memphis, Tennessee

Cap detail of west elevation, facing east

9 of 9

OCT 6 1980

NOV 25 1980