

Lava Rock Structures in South Central Idaho
Silva, Arthur D., Ranch, site 3 (shop)

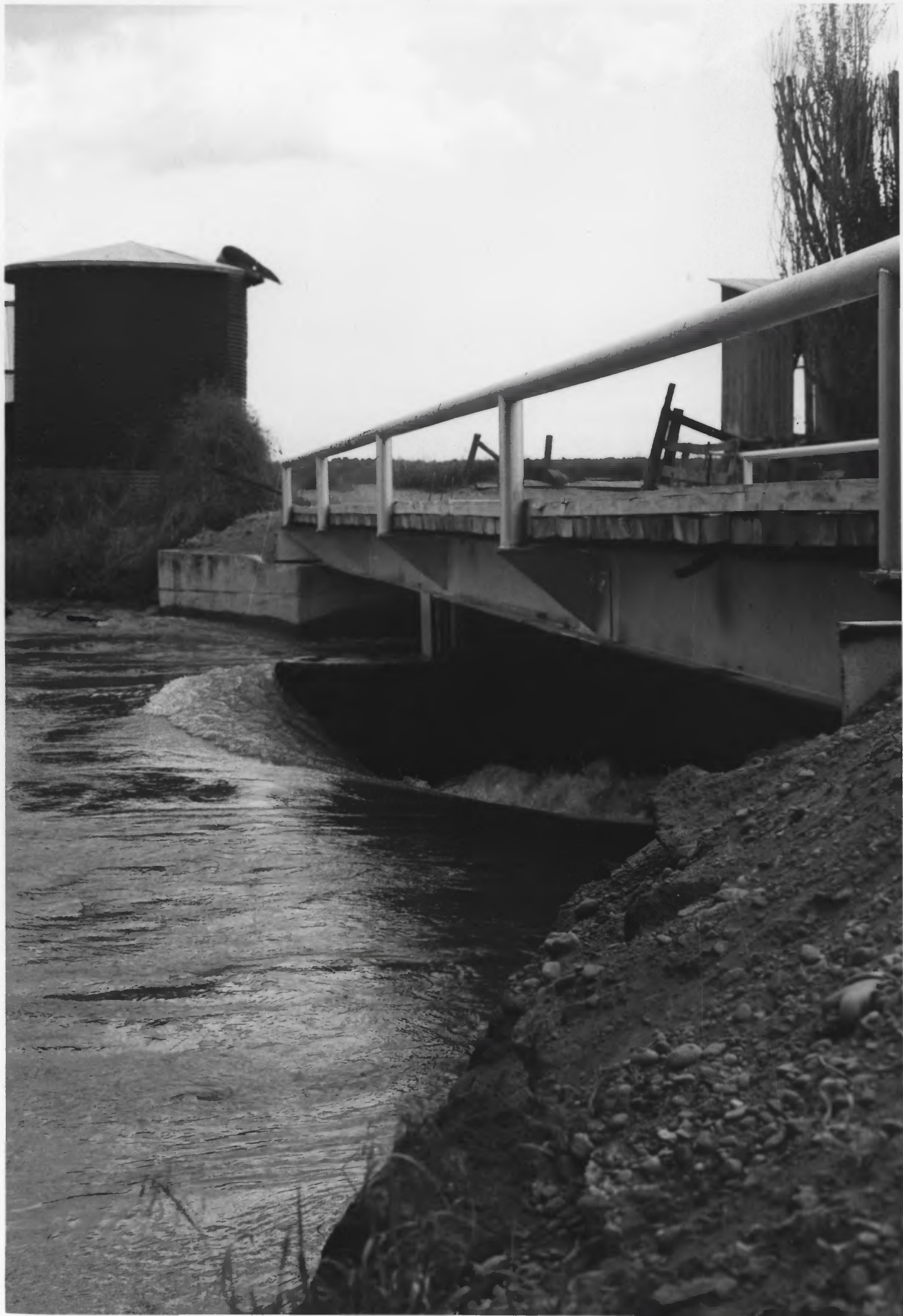
Four miles north and three miles west of Shoshone
Shoshone vicinity, Lincoln County, Idaho

Photograph by Jennifer Eastman Attebery
June 1983

Negative on file at the Idaho State Historical Society,
Boise, Idaho

View from southeast

Photograph one of three



Lava Rock Structures in South Central Idaho
Silva, Arthur D., Ranch, site 3 (bridge piers)

Four miles north and three miles west of Shoshone
Shoshone vicinity, Lincoln County, Idaho

Photograph by Jennifer Eastman Attebery
June 1983

Negative on file at the Idaho State Historical Society,
Boise, Idaho

View from northeast

Photograph two of three



Lava Rock Structures in South Central Idaho
Silva, Arthur D., Ranch, site 3 (barn)

Four miles north and three miles west of Shoshone
Shoshone vicinity, Lincoln County, Idaho

Photograph by Jennifer Eastman Attebery
June 1983

Negative on file at the Idaho State Historical Society,
Boise, Idaho

View from northeast

Photograph three of three