

The National Register Legal Federal Signature and Date of Listing for the Makiki Fire Station can be found in the Cover documentation for the Fire Stations of Oahu in Honolulu, HAWAII.

UNITED STATES DEPARTMENT OF THE INTERIOR  
NATIONAL PARK SERVICE

**NATIONAL REGISTER OF HISTORIC PLACES  
INVENTORY -- NOMINATION FORM**

FOR NPS USE ONLY	
RECEIVED	SEP 30 1980
DATE ENTERED	DEC 2 1980

CONTINUATION SHEET

ITEM NUMBER 7 PAGE 4

4. The Makiki Station, although designed by Solomon F. Kenn in 1929, is in many ways similar to the Kaimuki Stations in appearance. It too is box-like in massing, constructed of reinforced concrete with a stucco veneer, has a green tiled hipped roof with overhanging eaves and exposed rafters and a rear tower which is located to the right of center. The tower has on each side a pair of long, thin, round arched louvers above which is a banding with disc ornamentation and a set of three rectangular louvers. The tower terminates with a green tile hipped roof.

The front doorways, which originally had elliptical arches and sliding doors, have been modified in a manner similar to the Kaimuki and Kalihi Stations with overhead sliding doors. The light fixtures and trellis have again been removed. A band molding with disc ornamentation separates the first and second stories. The second story has a set of four rectangular windows which are flanked on either side by a similar set of three windows. Again, all windows are jalousies.

The interior plan is similar to the Kaimuki and Kalihi Station, although the Makiki Station has a center brass pole to slide down, while the earlier stations have a pole in each of the front corners.

An outbuilding, constructed in 1931, which is similar to those at the Kaimuki and Kalihi Stations is directly behind this Fire Station. Again, this is not included in the nomination. Of all the stations surveyed, the Makiki Station is in the worst condition. All other stations are in good condition, but Makiki's second floor is in poor condition.

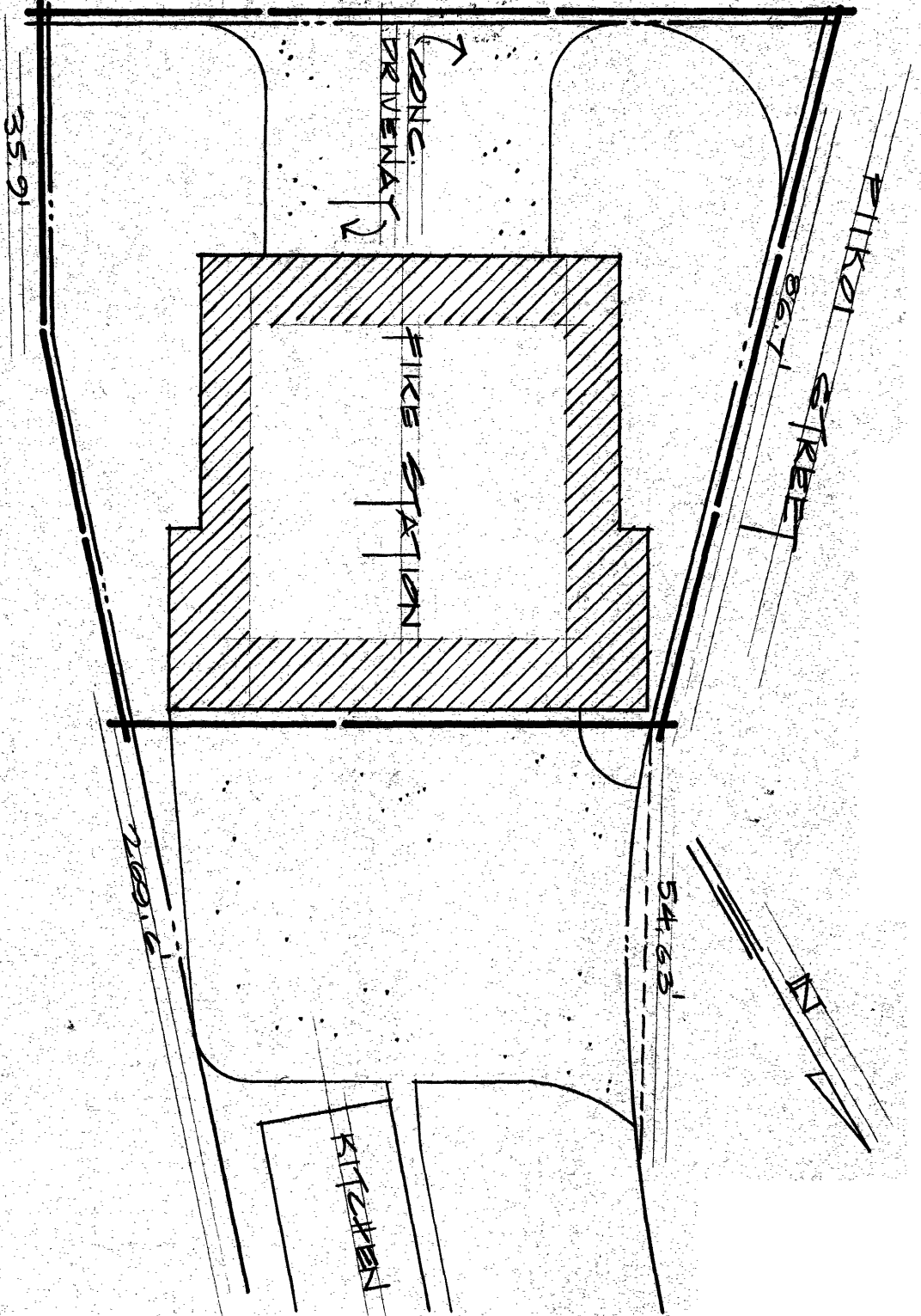
Located at 1202 Wilder Avenue, the Makiki Station encompasses a portion of the property described in 1979 by the Tax Map Key: 2-4-29:29 which is delineated by the dark line on the enclosed plat map labeled Makiki Fire Station.

UTM: Z4 E20125 N2356890

5. The Kakaako Fire Station follows the same plans as the Makiki Station and also was erected in 1929. The only differences between this building and the one in Makiki is that it retains its 6 x 1 double hung sash windows and rather than having overhead sliding doors, it has

WILDER AVE.

92.35'



LOT PLAN

S.C. 1" = 20'-0"

T.M.K. 2-4-29:29

MARKER  
FIRE STATION