



Halidon Hill Plantation  
Berkeley County, South Carolina  
Louis M. Jackson, Preservation  
Consultants, Inc.  
December 1984  
Quinby House: East Elevation  
Facing West



Halidon Hill Plantation

Berkeley County, South Carolina

Louis M. Jackson, Preservation  
Consultants, Inc.

May 1985

Tidal Fields

Facing Southeast



QUINBY

*St. Thomas' Parish.*

Halidon Hill Plantation

Berkeley County, South Carolina

Louis M. Jackson, Preservation  
Consultants, Inc.

December 1984

Historic Painting of Quinby House:  
Hangs in Front Hall of House



St. George

Halidon Hill Plantation

Berkeley County, South Carolina

Reproduction of Early Photo:

Louis M. Jackson, Preservation  
Consultants, Inc.

December 1984

Quinby House: Main Facade Prior  
to Restoration and Move





Halidon Hill Plantation

Berkeley County, South Carolina

Louis M. Jackson, Preservation  
Consultants, Inc.

December 1984

Quinby House: Second Level Hall

Facing East



Halidon Hill Plantation

Berkeley County, South Carolina

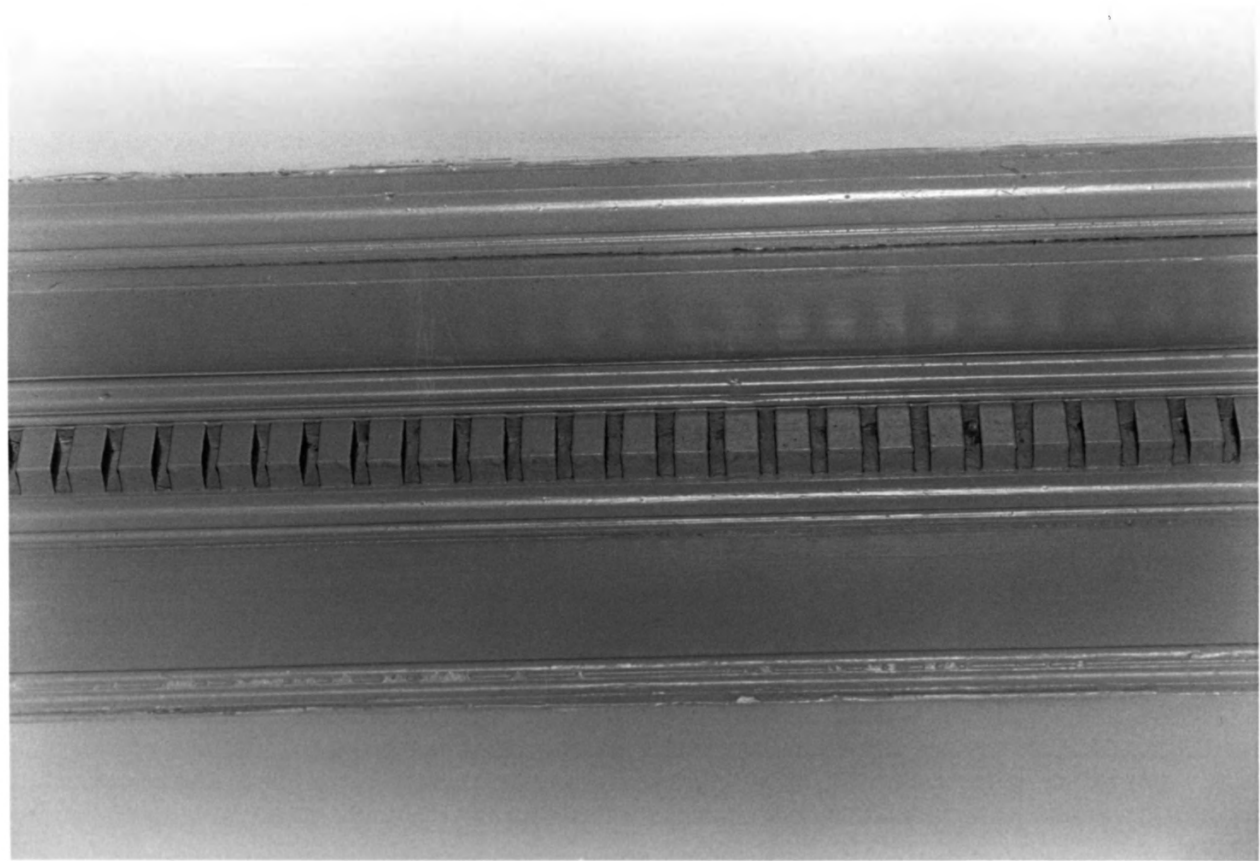
Louis M. Jackson, Preservation  
Consultants, Inc.

December 1984

Quinby House: Detail of Main  
Staircase



Halidon Hill Plantation  
Berkeley County, South Carolina  
Louis M. Jackson, Preservation  
Consultants, Inc.  
December 1984  
Quinby House: First Level  
Dining Room  
Facing Northeast



Halidon Hill Plantation  
Berkeley County, South Carolina  
Louis M. Jackson, Preservation  
Consultants, Inc.  
December 1984  
Quinby House: First Level  
Dining Room Cornice Detail  
Facing South





Halidon Hill Plantation  
Berkeley County, South Carolina  
Louis M. Jackson, Preservation  
Consultants, Inc.  
December 1984  
Quinby House: Attic Rafter  
Construction, Facing Northeast



Halidon Hill Plantation

Berkeley County, South Carolina

Louis M. Jackson, Preservation  
Consultants, Inc.

December 1984

Quinby House: First Level Hall

Facing East



Halidon Hill Plantation

Berkeley County, South Carolina

Louis M. Jackson, Preservation  
Consultants, Inc.

December 1984

Old Rice Field, Facing West



Halidon Hill Plantation  
Berkeley County, South Carolina  
Louis M. Jackson, Preservation  
Consultants, Inc.  
May 1985  
Caretaker's Cottage  
Facing Northeast





Halidon Hill Plantation

Berkeley County, South Carolina

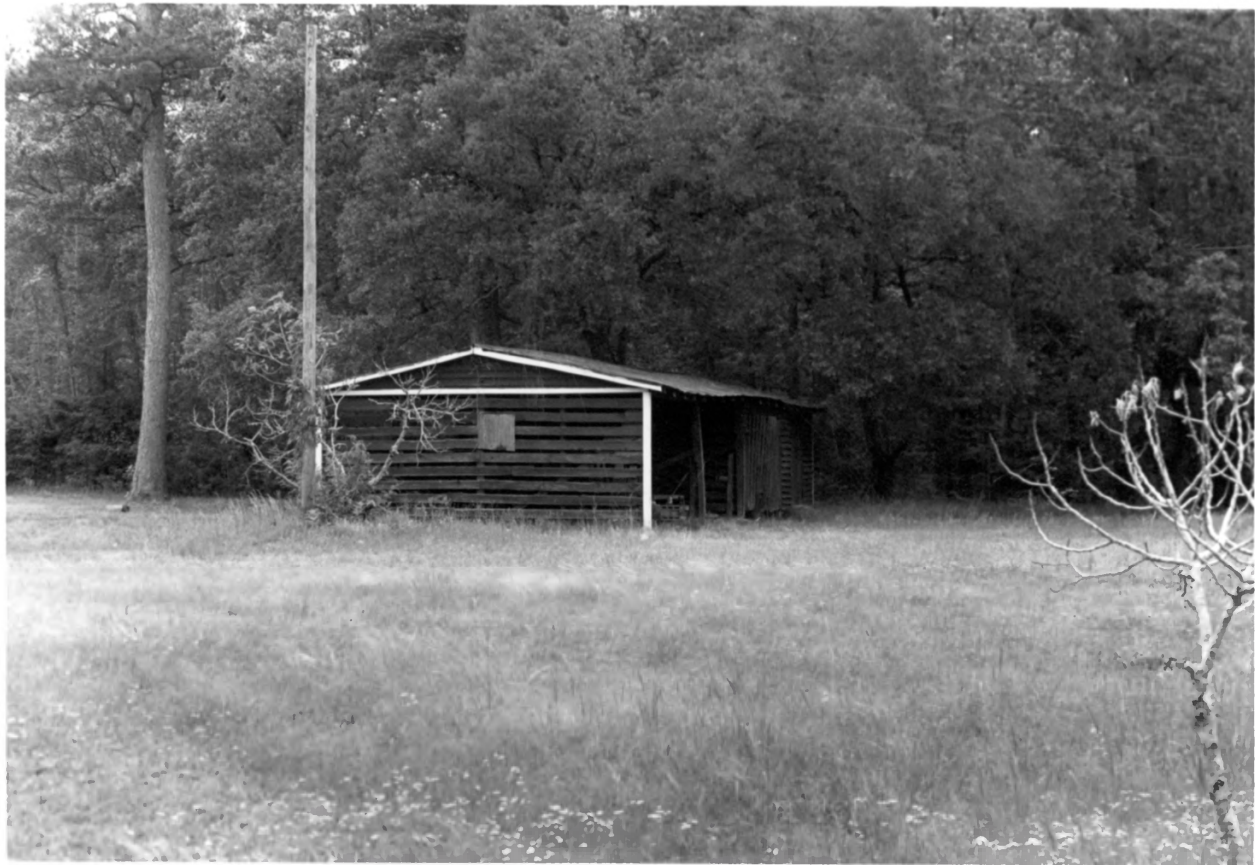
Louis M. Jackson, Preservation

Consultants, Inc.

May 1985

Barn

Facing Northeast



Halidon Hill Plantation

Berkeley County, South Carolina

Louis M. Jackson, Preservation  
Consultants, Inc.

May 1985

Shed

Facing Northeast



Halidon Hill Plantation  
Berkeley County, South Carolina  
Louis M. Jackson, Preservation  
Consultants, Inc.  
May 1985  
Lodge  
Facing East



Halidon Hill Plantation  
Berkeley County, South Carolina  
Louis M. Jackson, Preservation  
Consultants, Inc.  
May 1985  
Hard Pinch Reserve, Facing South





Halidon Hill Plantation

Berkeley County, South Carolina

Louis M. Jackson, Preservation  
Consultants, Inc.

May 1985

Hard Pinch reserve



Halidon Hill Plantation  
Berkeley County, South Carolina  
Louis M. Jackson, Preservation  
Consultants, Inc.  
May 1985  
Red Bank Reserve Dam  
Facing Northeast



Halidon Hill Plantation  
Berkeley County, South Carolina  
Louis M. Jackson, Preservation  
Consultants, Inc.  
May 1985  
Red Bank Reserve, Old Trunk Gate  
Facing South



Halidon Hill Plantation

Berkeley County, South Carolina

Louis M. Jackson, Preservation  
Consultants, Inc.

December 1984

Quinby House: Northeast Elevation

Facing Southwest





Halidon Hill Plantation

Berkeley County, South Carolina

Louis M. Jackson, Preservation  
Consultants, inc.

Quinby House: West Elevation  
Facing East



Halidon Hill Plantation

Berkeley County, South Carolina

Louis M. Jackson, Preservation  
Consultants, Inc.

December 1984

Quinby House: South Elevation  
Facing North



Halidon Hill Plantation  
Berkeley County, South Carolina  
Louis M. Jackson, Preservation  
Consultants, Inc.

December 1984

Quinby House: North Elevation  
Facing South



Halidon Hill Plantation

Berkeley County, South Carolina

Louis M. Jackson, Preservation  
Consultants, Inc.

December 1984

Caretaker's Cottage (#6 on Site  
Plan): Northwest Elevation  
Facing Southeast





Halidon Hill Plantation

Berkeley County, South Carolina

Louis M. Jackson, Preservation  
Consultants, Inc.

December 1984

Barn and Shed (#4 and #5 on Site  
Plan): Northwest Elevation  
Facing Southeast



Halidon Hill Plantation

Berkeley County, South Carolina

Louis M. Jackson, Preservation  
Consultants, Inc.

December 1984

Caretaker's Cottage (Number 3 on  
Site Plan): Southwest Elevation  
Facing Northeast