

ROCKHART & CO. HARDWARE, QUEENSWARE,
FURNITURE, STOVES & TINWARE.



DRYGOODS & ...

SECOND HA



2. Sixth Street north from
Lincoln, J.L. Furlong, ca. 1885,
Colorado Historical Society, Denver.

C. New Mexico - Las Vegas

Hot Springs & Vicinity

1885

photo by J. N. Furlong

F-42484

Please credit Colorado Historical Society
commercial use requires additional fee.

INSURANCE
ESTATE

The
Stephens - Irish
Agency

INSURANCE
REAL ESTATE

REAL ESTATE
MOR
YALU
ESTATES

KOMAC PAINTS

Paints • Staining • Paper • Wallpaper

Chevy



3. Sixth Street South from
Douglas, Douglas-Sixth Street
District; Las Vegas, New Mexico;
Chris Wilson; 1982; from left, non-
cont., cont., non-cont. cont.



4. Union block (551), Douglas-
Sixth Street District; Las Vegas,
New Mexico; Chris Wilson; 1982; W at
the E facade, contributing. -



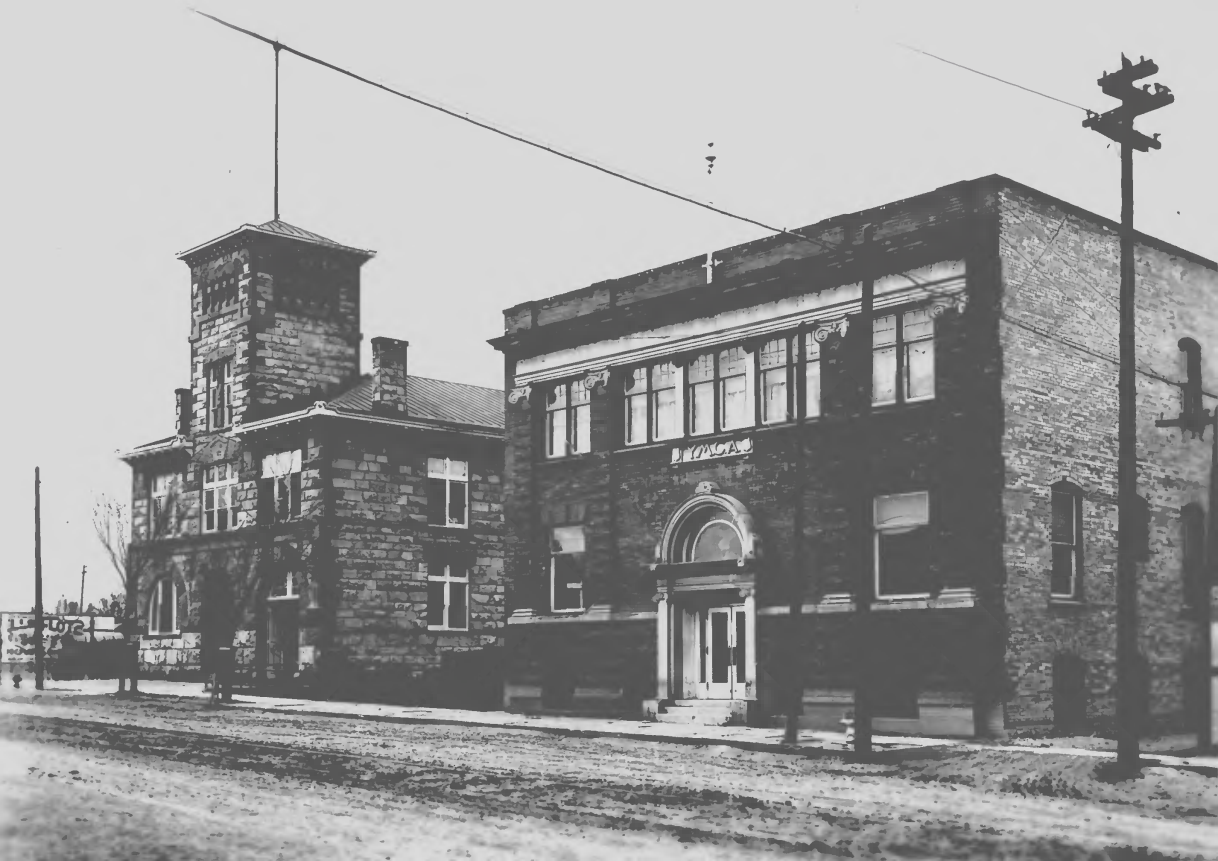
LAS VEGAS, NEW MEXICO

5. Douglas west from Grand, ca.
1930, Donnelly Library, N.M.
Highlands University, Las Vegas.

-



5. City Hall to Masonic Temple
(534-537), Douglas-Sixth Street
District; Las Vegas, New Mexico;
Chris Wilson; 1982; all Significant.



WALKER

WALKER

61230

7. City Hall and YMCA (534,536),
Jesse Nusbaum, ca. 1908, Museum of
New Mexico Photo Archives, Santa Fe.

City Hall and Y.M.C.A. building

Sixth Street

Las Vegas, New Mexico

ca 1908

(Neg. No. 61230)

PHOTO BY JESSE NUSBAUM

PLEASE CREDIT:
MUSEUM OF NEW MEXICO



FIRST NATIONAL BANK
Complete Banking Service

HOTEL

CARPET

8. Masonic Temple (537), Douglas-
Sixth Street District; Las Vegas,
New Mexico; Chris Wilson; 1982; N at
S and W sides, Significant.

5. Crockett Building (532),



the OFFICE EQUIPMENT-PRINTING
Office Supply

MURPHEY'S DRUGS

Realtor

Franklin's

9. Crockett Building (532),
Douglas-Sixth Street District; Las
Vegas, New Mexico; Chris Wilson;
1982; W at S and E sides,
Significant.



10. Crockett Building (532),
Douglas-Sixth Street District; Las
Vegas, New Mexico; Chris Wilson;
1982; interior Murphey's Drugs,
Significant.



SERF

HOTEL

11. Lion Park, Douglas-Sixth Street
District; Las Vegas, New Mexico;
Chris Wilson; 1982; W at fountain,
Significant.



12. Sixth Street north from
Lincoln, L.V. Furniture foreground,
Douglas-Sixth Street District; Las
Vegas, New Mexico; Chris Wilson;
1982; from left, sig., 2 non-cont.,
2 cont.



W
A
A

CHERRY HARDWARE

J.C. JOHNSON & SONS

ILFELDS.
Appliances

WESTERN
AUTO

HARDWARE & FURNITURE CO.

W
A
A

13. Douglas Avenue east from
Seventh, Johnsen's and Ilfeld's
(563,561), Douglas-Sixth Street
District; Las Vegas, New Mexico;
Chris Wilson; 1982; from right,
sig., 2 non-cont., cont., non-cont.



14. Bank of Las Vegas (527),
Douglas-Sixth Street District; Las
Vegas, New Mexico; Chris Wilson;
1982; N at S and W sides,
Significant.



STOP

128
133

15. El Fidel Hotel (538), Douglas-Sixth Street District; Las Vegas, New Mexico; Chris Wilson; 1982; NW at SW facade, Contributing.



GORDON
JEWELERS
DIAMONDS - WATCHES

GORDON'S
JEWELRY

the precision
Office Sup

MURPHY'S

CREATIVE PRINTERS

16. Gordon's Jewelers (531),
Douglas-Sixth Street District; Las
Vegas, New Mexico; Chris Wilson;
1982; NE at SW facade, contributing.

FURNITURE WAREHOUSE



- 17. Furniture Warehouse (555);
Douglas-Sixth Street District; Las Vegas, New Mexico; Chris Wilson;
1982; NW at SW side; contrubuting.
-



U.S.
27

518 1/2
LONG HALL
THIRD FLAIR

CAPRIAN N° 2
A.C.M.A.M.
27

REX STUDIO
Suite 200
Studio Hours
9:30 - 4:30 (M-F)
SAT 9:30 - 12:30

- 18. Masonic Temple (537), Douglas-
Sixth Street District; Las Vegas,
New Mexico; Chris Wilson; 1982; NW
at main entrance, Significant.