



THOMAS, DAVID W. HOUSE

OPESSA VICINITY

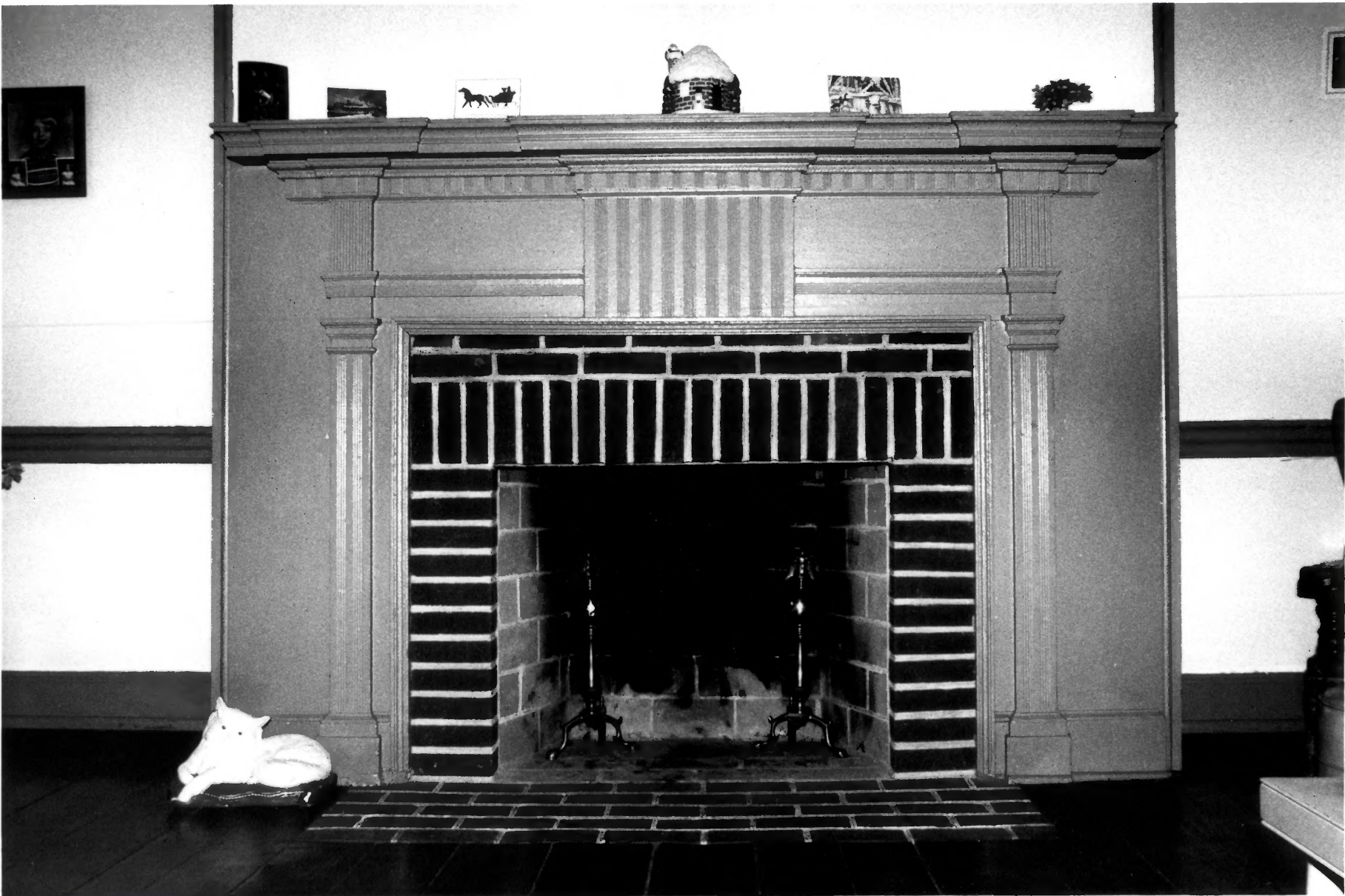
NEW CASTLE COUNTY, DELAWARE

MAX VAN BALGOOY

DECEMBER 1988

CENTER FOR HISTORIC ARCHITECTURE AND ENGINEERING  
UNIVERSITY OF DELAWARE

LOOKING SOUTHWEST



THOMAS, DAVID W. HOPE

CEPES VILLAGE

NEW CASTLE COUNTY, DELAWARE

MAX VAN BALGON

\* DECEMBER 1980

\* CENTER FOR HISTORIC ARCHITECTURE AND ENGINEERING

\* UNIVERSITY OF DELAWARE

\* FIRST FLOOR WEST ROOM MAINT.