

Signature of the Keeper Date of Action
 Elson H. Beall 6-9-00

Oakland Cemetery
Name of Property

Ouachita County, Arkansas
County and State

5. Classification

Ownership of Property

(Check as many boxes as apply)

- ☐ private
☒ public-local
☐ public-State
☐ public-Federal

Category of Property

(Check only one box)

- ☐ building(s)
☐ district
☒ site
☐ structure
☐ object

Number of Resources within Property

(Do not include previously listed resources in count.)

Contributing Noncontributing

_____	_____	buildings
1	_____	sites
_____	_____	structures
_____	_____	objects
1	0	Total

Name of related multiple property listing

(Enter "N/A" if property is not part of a multiple property listing.)

N/A

Number of Contributing resources previously listed in the National Register

1 - The Confederate Section, NR Listed 12/12/96

6. Function or Use

Historic Functions

(Enter categories from instructions)

FUNERARY: Cemetery

Current Functions

(Enter categories from instructions)

FUNERARY: Cemetery

7. Description

Architectural Classification

(Enter categories from instructions)

N/A

Materials

(Enter categories from instructions)

foundation N/A

walls N/A

roof N/A

other N/A

Narrative Description

(Describe the historic and current condition of the property on one or more continuation sheets.)

SEE CONTINUATION SHEETS.

United States Department of the Interior
National Park Service

National Register of Historic Places Continuation Sheet

Section number 7 Page 1

Summary

Oakland Cemetery is the oldest burial place remaining that is associated with the founding and early development of the City of Camden. Located in the 100 Block of Maul Road bounded by Pearl Street and Madison Avenue, Oakland Cemetery was established in 1830 on land donated by Major William L. Bradley. Containing 1,140 enumerated plots, the cemetery has 1,085 historic burials and only 55 non-historic burials. Oakland Cemetery is being nominated to the National Register of Historic Places under Criterion A, Criteria Consideration D.

Elaboration

Oakland Cemetery, located in the 100 Block of Maul Road and bounded by Pearl Street and Madison Avenue, is the oldest burial place remaining that is associated with the founding and early development of the City of Camden, Arkansas. The cemetery was established in 1830 on land donated by Major William L. Bradley, one of the early settlers and developers of the City of Camden and Ouachita County. Oakland Cemetery encompasses 7.050 acres of gently rolling land shaded by mature oak, elm, pine, and cedar trees. Century-old crepe myrtle and magnolia trees complete the forested landscape. Iris, daffodils, and other perennials spread across the grounds and grace many of the graves. A new retaining wall and fence protect the steeply inclined edge of the Oakland Cemetery along Maul Road and Pearl Street. (The fence was installed in 1999 and designed to blend in with the historic appearance of the cemetery.) Two gated entrances (one on Maul Road and the other at the intersection of Maul Road and Pearl Street) allow access to the historic grounds. Once inside, a narrow graveled road lazily loops in a figure eight throughout the site.

The cemetery contains 1,140 enumerated plots consisting of 1,085 historic burials (including 231 in the Confederate Section, NR listed 12/12/96) and only 55 non-historic burials. The breakdown is as follows: 1830-1840, only 1 known burial, although there are depressions indicating possible unmarked graves; 1840-1899, 925 burials; 1900-1950, 159 burials; 1950-Present, 55 burials. The last burial to date to take place in the cemetery was in 1996.

Oakland Cemetery exhibits a wide variety of burial markers ranging in size from small to large and in style from rustic to extremely elaborate. The burial stones are predominately carved of marble and granite, although some native sandstone is used for the more rustic markers. White Titanium/Zinc is another material historically used for markers from the 1880s to the 1920s. Oakland Cemetery has a few markers of this material. A wide range of monument types embellish the cemetery. The most common styles of markers found in Oakland Cemetery are tablet, pulpit, and pedestal/obelisk. Tablet-style markers are flat, generally 12"-24" wide, 3"-6" thick, of varying height and typically set on a base. They may have flat or slightly arched tops and are usually rather plain in decoration. Tablet markers are most commonly carved from marble. Pulpit-style markers are most common in granite, usually set on a rusticated slab base. They are rectangular in form, taller than they are wide and 8"-12" thick. Their most distinctive feature is their beveled face or top that is reminiscent of a pulpit. Pedestal/Obelisk-style markers are indicative of their name with a shaft (often varying in height) placed on a base. The shafts of pedestal markers are usually either columnar or square, sometimes flat topped or crowned with urns. Occasionally, pedestal markers will be swaged with carved drapery. The shafts of obelisk markers are square at the base tapering to either a point or truncated top. They are invariably set on a base, sometimes-stepped in design, and often very elaborate.

United States Department of the Interior
National Park Service

National Register of Historic Places Continuation Sheet

Section number 7 Page 2

Other types of markers in Oakland Cemetery are: lawn-type markers which, are usually small, rectangular and set flush with the ground; ledger markers which, are large and rectangular (usually 3'X6'), typically in marble and placed flat on top of the grave (unlike lawn-type markers, ledger markers are not set flush with the ground); and box or raised ledger tombs. Box tombs are often constructed of rough dressed sandstone creating an open enclosure around the grave (the walls are typically 18"-24" high). A raised ledger tomb is a box tomb with a ledger slab covering the top. An additional type of marker found in Oakland Cemetery is the cradle-style marker. This type of marker consists of a low raised wall surrounding the grave (usually only 6"-8" high) with a tablet marker at the head of the grave. Marble is a typical material for cradle-style markers.

Various iconography is found on the monuments in Oakland Cemetery including angles (denoting spirituality, guiding the soul); books (alluding to the Bible); crosses (symbolizing resurrection); doves (indicating the Holy Spirit or peace); drapery (representing sorrow and mourning); flowers (symbolizing the life of man, frailty of life and impermanence); hands (embracing rebirth); hearts (standing for the affection of the living for the dead); willow trees (indicating grief, death, sorrow and mourning); flags and Masonic emblems.

Oakland Cemetery exhibits a traditional layout for early cemeteries with the oldest burials aligned to face east. Burials following the Civil War tend to more closely follow the contour of the property. Family plots are delineated either with low concrete or stone retaining walls or with iron fencing (a variety of examples in iron fencing is evidenced, from the simple to the elaborate). Individual burials are arranged in simple rows.

An unusual example of fencing surrounds the earliest burial in the cemetery. Local oral history reveals that sometime between the establishment of the cemetery in 1830 and prior to 1840 a young girl died on a packet boat docked at Camden (then Ecore Fabre). She was interred at Oakland Cemetery and the anchor chain from the packet boat on which she died was erected around her grave. Another example of chain fencing is that surrounding the Confederate Section of the cemetery (NR listed 12/12/96). This section contains 231 burials of Confederate dead, both known and unknown. The iron chain, suspended from tubular pylons, surrounds the white marble tablet markers. A large obelisk monument graces the center of this burial plot.

Many individuals who contributed to the establishment, growth and development of Camden are interred at Oakland Cemetery. Major William Bradley who donated the land for Oakland Cemetery was buried there in 1865. In addition to being a large landowner, Major Bradley had a successful steamship business. The Reverend Porter Clay, brother of Henry Clay, was interred in 1850. Camden's first physician, Dr. James H. Ponder, was buried in 1855. Colonel Hiram Grinstead, commander of General Fagan's army at the Battle of Jenkin's Ferry, was laid to rest in 1864. Colonel Will Chidester, owner of a 60-coach stagecoach line, and one of Camden's early citizens, was buried at Oakland Cemetery. Another important early individual to be laid to rest at the cemetery was Peter McCollum, owner of a profitable mercantile business. Other early individuals and families also share the cemetery with those listed above: the Hill family (matriarch, Ione, buried in 1847); Lieutenant Thomas Stone, laid to rest in 1849; the Scales-Elliott family; the Graham-Tony family; Mr. F.H. Warner, Camden's first Daguerreotype artist, interred in 1860; the Reeves and Lockett families; and Major Rowland B. Smith, buried in 1906. Although the individuals enumerated above are few, many others important to the founding and early development of the City of Camden are also interred in Oakland Cemetery.

United States Department of the Interior
National Park Service

National Register of Historic Places Continuation Sheet

Section number 7 Page 3

Integrity

Oakland Cemetery possesses a strong sense of integrity as its location remains that of a small town and its setting remains pristine. Oakland's landscape architecture and gravestone designs display the original materials used and workmanship employed during its period of significance. Despite the 55 new graves (post 1955), few changes have been made to detract from Oakland's feeling and association as it is still regarded as Camden's oldest extant cemetery.

8. Statement of Significance**Applicable National Register Criteria**

(Mark "x" in one or more boxes for the criteria qualifying the property for National Register listing.)

- ☒ **A** Property is associated with events that have made a significant contribution to the broad patterns of our history.
- ☐ **B** Property is associated with the lives of persons significant in our past.
- ☐ **C** Property embodies the distinctive characteristics of a type, period, or method of construction or represents the work of a master, or possesses high artistic values, or represents a significant and distinguishable entity whose components lack individual distinction.
- ☐ **D** Property has yielded, or is likely to yield, information important in prehistory or history.

Criteria Considerations

(Mark "x" in all the boxes that apply.)

Property is:

- ☐ **A** owned by a religious institution or used for religious purposes.
- ☐ **B** removed from its original location.
- ☐ **C** moved from its original location.
- ☒ **D** a cemetery.
- ☐ **E** a reconstructed building, object, or structure.
- ☐ **F** a commemorative property
- ☐ **G** less than 50 years of age or achieved significance within the past 50 years.

Levels of Significance (local, state, national)

Local

Areas of Significance (Enter categories from instructions)

EXPLORATION/SETTLEMENT

Period of Significance

c.1830-1950

Significant Dates

1830

Significant Person (Complete if Criterion B is marked)

N/A

Cultural Affiliation (Complete if Criterion D is marked)

N/A

Architect/Builder

N/A

Narrative Statement of Significance

(Explain the significance of the property on one or more continuation sheets.)

SEE CONTINUATION SHEETS.

9. Major Bibliographical References**Bibliography**

(Cite the books, articles, and other sources used in preparing this form on one or more continuation sheets.)

SEE CONTINUATION SHEETS.

United States Department of the Interior
National Park Service

National Register of Historic Places Continuation Sheet

Section number 8 Page 1

Summary

Oakland Cemetery in Camden, Arkansas is being nominated to the National Register of Historic Places under Criterion A with local significance as the oldest burial place remaining that is associated with the founding and early development of the City of Camden. Thus, it also meets the eligibility requirements of Criteria Consideration D: Cemeteries – because it contains graves of a number of persons who contributed to the growth and development of Camden and because the cemetery can attain significance from its association with the towns historic settlement.

Elaboration

The site now occupied by the town of Camden was originally settled prior to 1720 by a French trapper and explorer named Henri a'Fabre and named Ecore Fabre (or Fabre's Bluff). More permanent settlement arrived in 1817 with Jesse Bowman, a trapper who settled at Ecore Fabre. In 1824, John Nunn, purchased the property containing the settlement of Ecore Fabre from Bowman. About this time other settlers began to arrive and settle at Ecore Fabre. The community's geographical location, situated as it is on the Ouachita River, played an important role in its development. The Ouachita River was a major transportation route into southeastern Arkansas, and Ecore Fabre's position on the waterway was advantageous to the community's economic growth. Shipping and Cotton growing were two of the early major industries for the community.

In 1834 Major William Bradley (donor of the property for Oakland Cemetery) married John Nunn's widow, and, by 1842, had acquired title to the whole of Ecore Fabre. In 1843 Ecore Fabre became the county seat for Ouachita County, and in 1844 the town was renamed Camden by General Thomas Woodward, a wealthy local landowner, after his childhood home in Alabama.

In addition to traditional farm related industries, a woolen mill was erected at Camden in 1860. Camden continued to function as a major river port following its occupation during the Civil War and became a major regional transportation hub after 1873 when the Iron Mountain Railway constructed a branch from its Missouri-Texas line through Gurdon to Camden. Later other railroad companies including the Chicago Rock Island, Missouri-Pacific and St. Louis Southwestern ran lines into and through Camden. This allowed the town to expand as a transportation center to include the lumber and oil industries as well. Such local industries as the Camden Furniture Company and the Camark Pottery Plant also flourished in Camden, giving it a strong industrial and manufacturing base to add to its earlier status as a transportation center. Camden continued to prosper up until World War II when its industrial, manufacturing and transportation status began to wane. Today, Camden is a relatively small, sleepy river town whose main industry is a large paper mill. Nevertheless, the history of the settlement of Camden-Ecore Fabre can be traced through the burials at Oakland Cemetery by viewing the monuments of the settlers, merchants, soldiers, proprietors, and landowners that helped to settle and build the town of Camden.

Significance

Oakland Cemetery is being nominated to the National Register of Historic Places under **Criterion A with local significance** as the oldest burial place remaining that is associated with the founding and early development of the City of Camden. Thus, it also meets the eligibility requirements of **Criteria Consideration D: Cemeteries**.

Previous documentation on file (NPS):

- ☐ preliminary determination of individual listing (36 CFR 67) has been requested
- ☐ previously listed in the National Register
- ☐ Previously determined eligible by the National Register
- ☐ designated a National Historic Landmark
- ☐ recorded by Historic American Buildings Survey

- ☐ recorded by Historic American Engineering
Record # _____

Primary location of additional data:

- ☒ State Historic Preservation Office
- ☐ Other State Agency
- ☐ Federal Agency
- ☐ Local Government
- ☐ University
- ☒ Other

Name of repository:

Ouachita County Historical Society

10. Geographical Data

Acreage of Property 7.050 acres

UTM References

(Place additional UTM references on a continuation sheet.)

1	15	515500	3716890
	Zone	Easting	Northing
2			

3			
	Zone	Easting	Northing
4			

☐ See continuation sheet**Verbal Boundary Description**

(Describe the boundaries of the property on a continuation sheet.)

Located within the NE Corner of Section 22-T13S-R17W.

Beginning approximately five feet from the junction of Pearl Street and Madison Avenue proceed in a northerly direction approximately 480 feet following the fencing until its point of termination; at this point turn westward following the fence approximately 640 feet to its point of termination at the northwest corner. Next, proceed in a southwesterly direction approximately 320 feet towards Maul Road following the fence to its point of termination. Then proceed approximately 840 feet in a southeasterly direction following the fence along Maul Road until it meets Pearl Street at which point you follow the fence in an easterly direction to its point of origin.

Boundary Justification

(Explain why the boundaries were selected on a continuation sheet.)

This boundary includes all of the property historically associated with the Oakland Cemetery including the Confederate Section listed on the National Register 12/12/96.

11. Form Prepared By

name/title	Mary White and Randy Jeffery (AHPP Tax/Technical Coordinator)		
organization	Arkansas Historic Preservation Program	date	2/18/00
street & number	1500 Tower Building., 323 Center St.	telephone	(501) 324-9880
city or town	Little Rock	state	AR
		zip code	72201

Paperwork Reduction Act Statement: This information is being collected for applications to the National Register of Historic Places to nominate properties for listing or determine eligibility for listing, to list properties, and to amend existing listing. Response to this request is required to obtain a benefit in accordance with the National Historic Preservation Act, as amended (16 U.S.C. 470 *et seq.*)

Estimated Burden Statement: Public reporting burden for this form is estimated to average 18.1 hours per response including time for reviewing instructions, gathering and maintaining data, and completing and reviewing the form. Direct comments regarding this burden estimate or any aspect of this form to the Chief, Administrative Services Division, National Park Service, P. O. Box 37127, Washington, DC 20013-7127; and the Office of Management and Budget, Paperwork Reduction Projects (1024-0018), Washington, DC 20303.

United States Department of the Interior
National Park Service

National Register of Historic Places Continuation Sheet

Section number 9 Page 1

Bibliography

Arkansas Preservation. Fall 1988: Newsletter of the Historic Preservation Alliance of Arkansas. "Come to Camden on the Ouachita." Entire Newsletter.

Brock, Leroy and John Stinson. Historic Camden, "Ecore Fabre...Early Camden...and the River." Hurley Printing Company, Camden, Arkansas, p.2.

Coan, Joseph W. Research Scholar (French-Spanish-Camden, Arkansas).

Elliott, Mrs. M. A., Mrs. J. T. Sifford, Mrs. W. W. Brown, Mrs. A. A. Tufts, and Mrs. Dan Davies. The Garden of Memory, 1976. The Hurley Company, Inc., Camden, Arkansas.

Griffin, H. L. "A Social History of Camden, Arkansas, 1824-1860." Essay for degree of Masters of Arts, Columbia University, 1932, p. 4.

Hempstead, Fay. A Pictorial History of Arkansas from Earliest Times to Year 1890, 1890. N. D. Thompson Publishing Company, 1964. (As quoted by Larry W. Morrison in Ouachita Quarterly (March, 1976), p. 1.

Johnson, Boyd W. "The Civil War in Ouachita County," p. 5.

Kellam, R. F. "Kellam Diary", Ouachita Quarterly, December, 1972, pp. 22-23.

Liscott, R. L. "Camden 50 Years Ago." States Rights Eagle, March 11, 1859.

Lockett, Mrs. M. E. Scrapbook.

Meek, Mrs. E. M. "John Nunn Was Leader of Early Settlers in Camden." Article, Lockett Scrapbook.

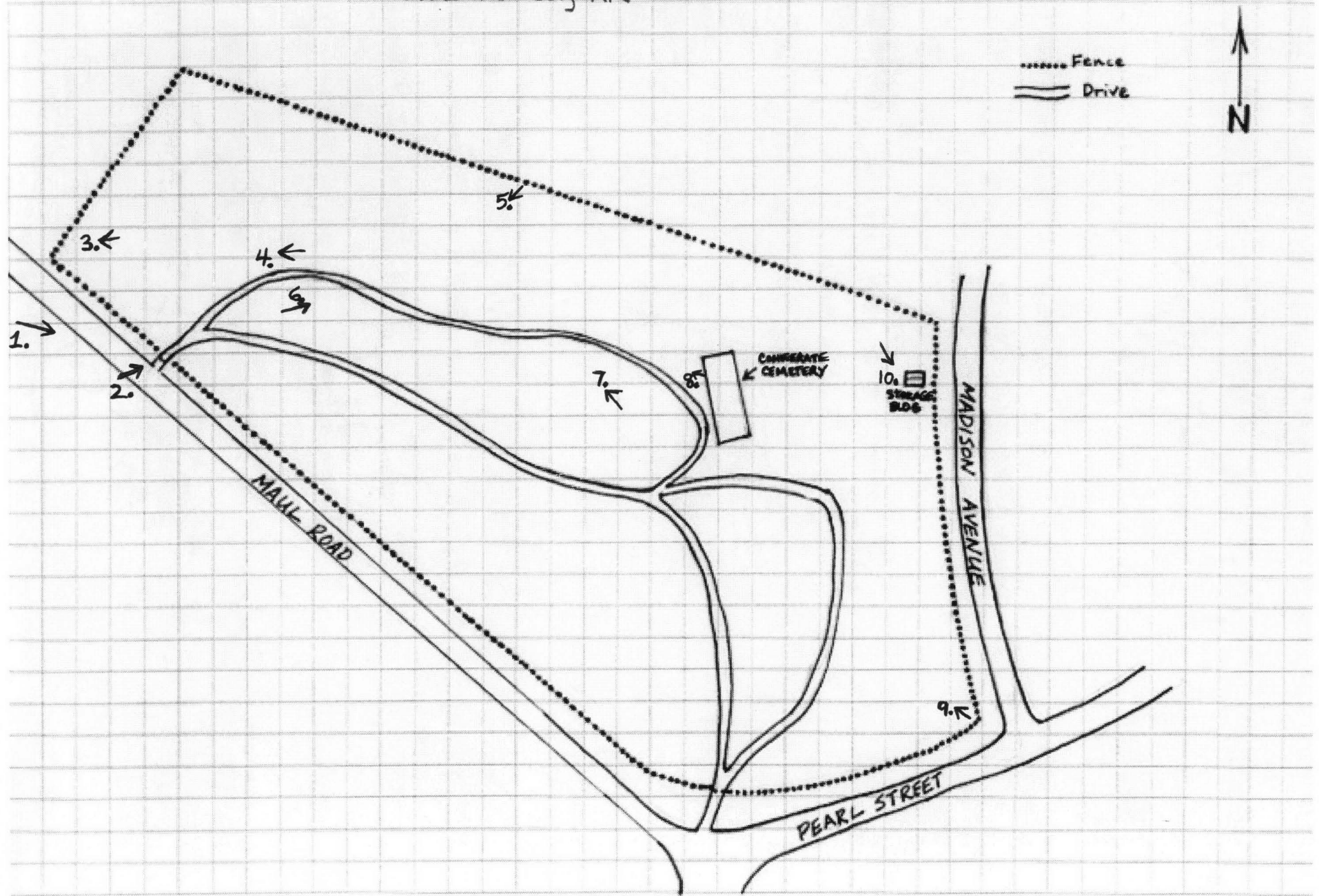
Morrison, Larry W. and Bruce Eppinette. Historical Ouachita County. Southern Arkansas University Tech. 1986, p. 37.

Morrison, Larry W. "Steamboats at the Port of Camden." Ouachita County Historical Quarterly, March 1976, p. 2.

Nunn, J. B. "River Steamer History Told." Arkansas Gazette newspaper article, no date.

Thatcher, H. K. "Camden and the Ouachita River," Ouachita County Historical Quarterly, September, 1970, p. 5.

Oakland Cemetery
Ouachita Co., AR



UNITED STATES DEPARTMENT OF THE INTERIOR
NATIONAL PARK SERVICE

NATIONAL REGISTER OF HISTORIC PLACES
EVALUATION/RETURN SHEET

REQUESTED ACTION: NOMINATION

PROPERTY Oakland Cemetery
NAME:

MULTIPLE
NAME:

STATE & COUNTY: ARKANSAS, Ouachita

DATE RECEIVED: 5/09/00 DATE OF PENDING LIST: 5/24/00
DATE OF 16TH DAY: 6/09/00 DATE OF 45TH DAY: 6/23/00
DATE OF WEEKLY LIST:

REFERENCE NUMBER: 00000634

REASONS FOR REVIEW:

APPEAL: N DATA PROBLEM: N LANDSCAPE: N LESS THAN 50 YEARS: N
OTHER: N PDIL: N PERIOD: N PROGRAM UNAPPROVED: N
REQUEST: N SAMPLE: N SLR DRAFT: N NATIONAL: N

COMMENT WAIVER: N

☒ ACCEPT ☐ RETURN ☐ REJECT 6.9.00 DATE

ABSTRACT/SUMMARY COMMENTS:

**Entered in the
National Register**

RECOM./CRITERIA _____

REVIEWER _____ DISCIPLINE _____

TELEPHONE _____ DATE _____

DOCUMENTATION see attached comments Y/N see attached SLR Y/N



Oakland Cemetery
Ozark Co, AR

Amy Bennett

July 1999

AHPP

View from across Maul Road looking east

1.



Oakland Cemetery

Oldchita Co., AR

Amy Bennett

July 1999

AHPP

View of Main Road gate looking

northeast

Z.



JOHN J. ROSE,
BORN
DECEMBER 2, 1832,
DEPARTED THIS LIFE
AUG. 13, 1884,
AGE
51 YRS. 8 MOS.
11 DYS.

Oakland Cemetery
Ouachita Co., AR

Amy Bennett

July 1999

AHPP

Detail of marker near southeastern
fence corner, looking west
3.



Oakland Cemetery

Quachita Co., AR

Amy Bennett

July 1999

AHPP

View of cemetery looking west

4.



Oakland Cemetery
Ouachita Co, AR
Amy Bennett
July 1999

AHPP

View of cemetery near north fence
looking southwest
5.



Oakland Cemetery

Oklahoma Co., AR

Amy Bennett

July 1999

AHPP

View of cemetery looking northeast

6.



GRINSTEAD

Oakland Cemetery

Ouachita Co., AR

Amy Bennett

July 1999

AHPP

View of marker near center of
cemetery looking northwest

7,



Oakland Cemetery
Ouachita Co, AR

Amy Bennett

July 1999

AHPP

View of Marker near Confederate
cemetery looking West

8.



IN MEMORIAM.
W.P. RATCLIFFE

THE PEOPLE OF CAMDEN
MOURN THE MAN, THE
CITIZEN, THE PREACHER,
IN PEACE AND IN WAR SOLD,
CAREFUL AND TENDER.

Oakland Cemetery
Ouachita Co., AR

Amy Bennett

July 1999

AHPP

View of Marker located near
southeast corner of cemetery
looking northwest

9.



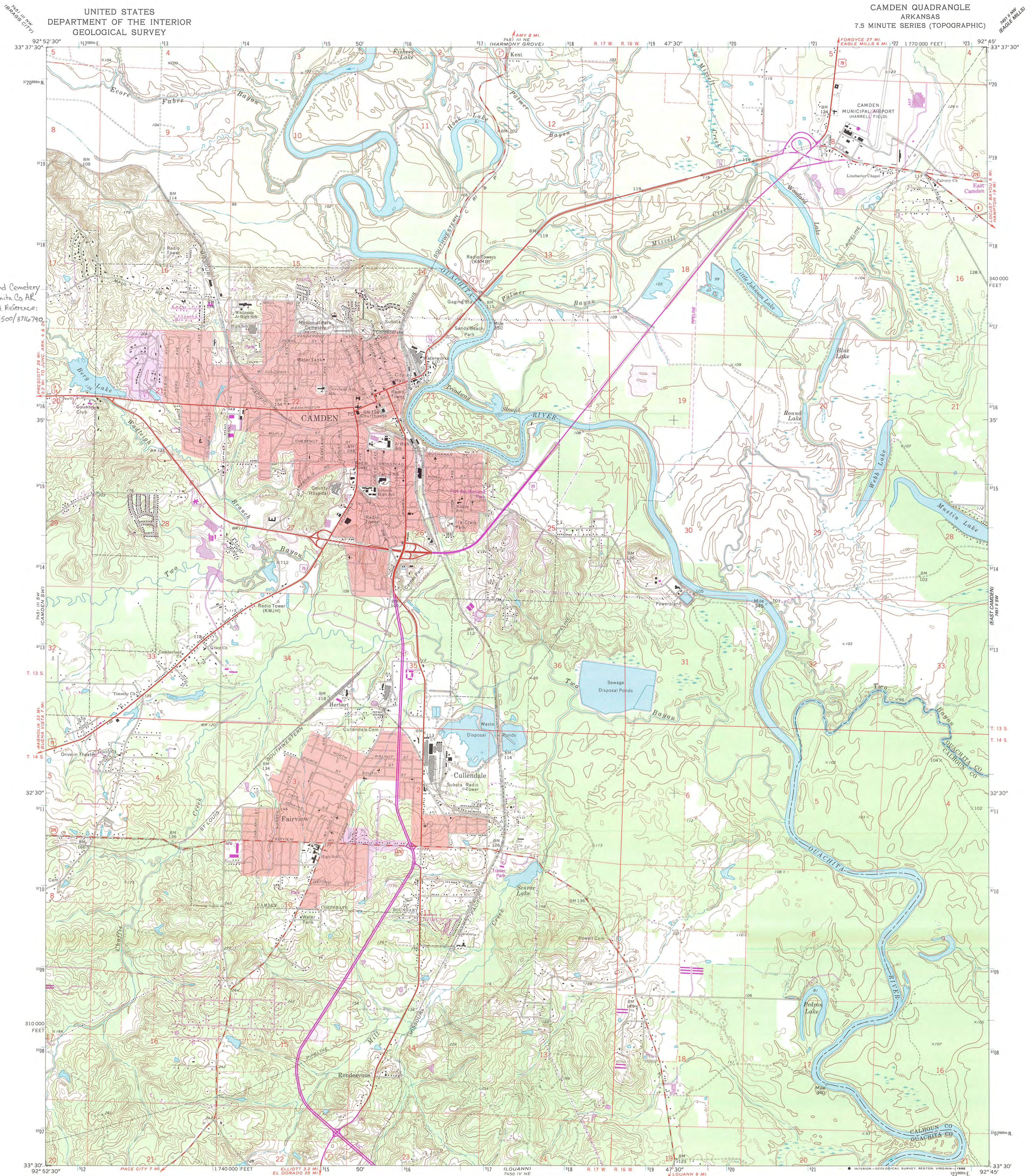
Oakland Cemetery
Ouachita Co., AR
Amy Bennett
July 1999
AHPP

View of storage unit located at
northeast corner near Madison
Ave fence, looking southeast
10.

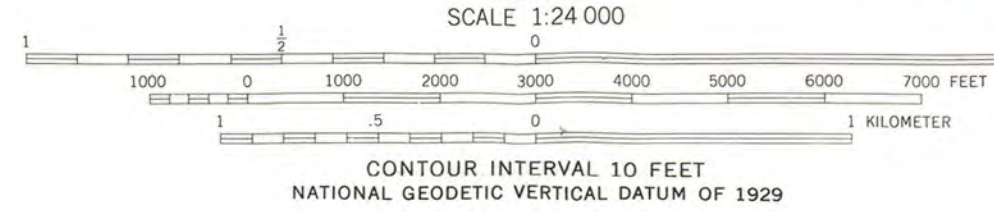
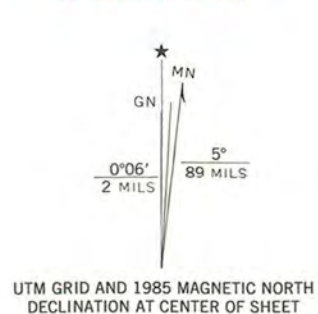
UNITED STATES
DEPARTMENT OF THE INTERIOR
GEOLOGICAL SURVEY

CAMDEN QUADRANGLE
ARKANSAS
7.5 MINUTE SERIES (TOPOGRAPHIC)

Oakland Cemetery
Dwight Co. AR
UTM Reference:
15J515500/3716790



Maped, edited, and published by the Geological Survey
in cooperation with Arkansas Geological Commission
Control by USGS and USC&GS
Planimetry by photogrammetric methods from aerial photographs
taken 1940. Topography by planimetric surveys 1949-50.
Revised from aerial photographs taken 1970. Field checked 1971.
Polyconic projection. 1927 North American datum
10,000-foot grid based on Arkansas coordinate system, south zone
1000-meter Universal Transverse Mercator grid ticks,
zone 15, shown in blue
Red tint indicates areas in which only landmark buildings are shown
Fine red dashed lines indicate selected fence and field lines where
generally visible on aerial photographs. This information is unchecked
To place on the predicted North American Datum 1983,
move the projection lines 10 meters south and
15 meters east as shown by dashed corner ticks
Purple tint indicates extension of urban areas



ROAD CLASSIFICATION	
Primary highway, hard surface	Light-duty road, hard or improved surface
Secondary highway, hard surface	Unimproved road
Interstate Route	U. S. Route
	State Route

CAMDEN, ARK.
33092-E7-TF-024
1971
PHOTOREVISED 1985
DMA 7451 III SE-SERIES Y884

THIS MAP COMPLIES WITH NATIONAL MAP ACCURACY STANDARDS
FOR SALE BY U. S. GEOLOGICAL SURVEY, DENVER, COLORADO 80225, OR RESTON, VIRGINIA 22092
AND ARKANSAS GEOLOGICAL COMMISSION, LITTLE ROCK, ARKANSAS 72204
A FOLDER DESCRIBING TOPOGRAPHIC MAPS AND SYMBOLS IS AVAILABLE ON REQUEST

Revisions shown in purple compiled from aerial photographs
taken 1984 and other sources. This information not
field checked. Map edited 1985



ARKANSAS
HISTORIC
PRESERVATION
PROGRAM

April 21, 2000

Carol D. Shull
Chief of Registration
United State Department of the Interior
National Register of Historic Places
National Park Service
800 North Capitol Street, Suite 250
Washington, D.C. 20002

RE: Oakland Cemetery – Camden, Ouachita County

Dear Carol:

We are enclosing for your review the nomination of the above-referenced property. The Arkansas Historic Preservation Program has complied with all applicable nominating procedures and notification requirements in the nomination process.

Thank you for your consideration in this matter.

Sincerely,

Cathy Buford Slater
State Historic Preservation Officer

CBS: km

Enclosures

