



GRAND UNION

GRAND UNION

UNITED STATES DEPARTMENT OF THE INTERIOR  
NATIONAL PARK SERVICE

**NATIONAL REGISTER OF HISTORIC PLACES  
PROPERTY PHOTOGRAPH FORM**

FOR NPS USE ONLY

RECEIVED OCT 31 1975

DATE ENTERED JAN 2 1976

SEE INSTRUCTIONS IN *HOW TO COMPLETE NATIONAL REGISTER FORMS*  
TYPE ALL ENTRIES -- ENCLOSE WITH PHOTOGRAPH

**1 NAME**

HISTORIC Grand Union Hotel

AND/OR COMMON  
Grand Union Hotel

**2 LOCATION**

CITY, TOWN Fort Benton

\_\_\_ VICINITY OF

STATE  
Montana

COUNTY  
Chouteau

**3 PHOTO REFERENCE**

PHOTO CREDIT David G. Conklin

DATE OF PHOTO August 6, 1975

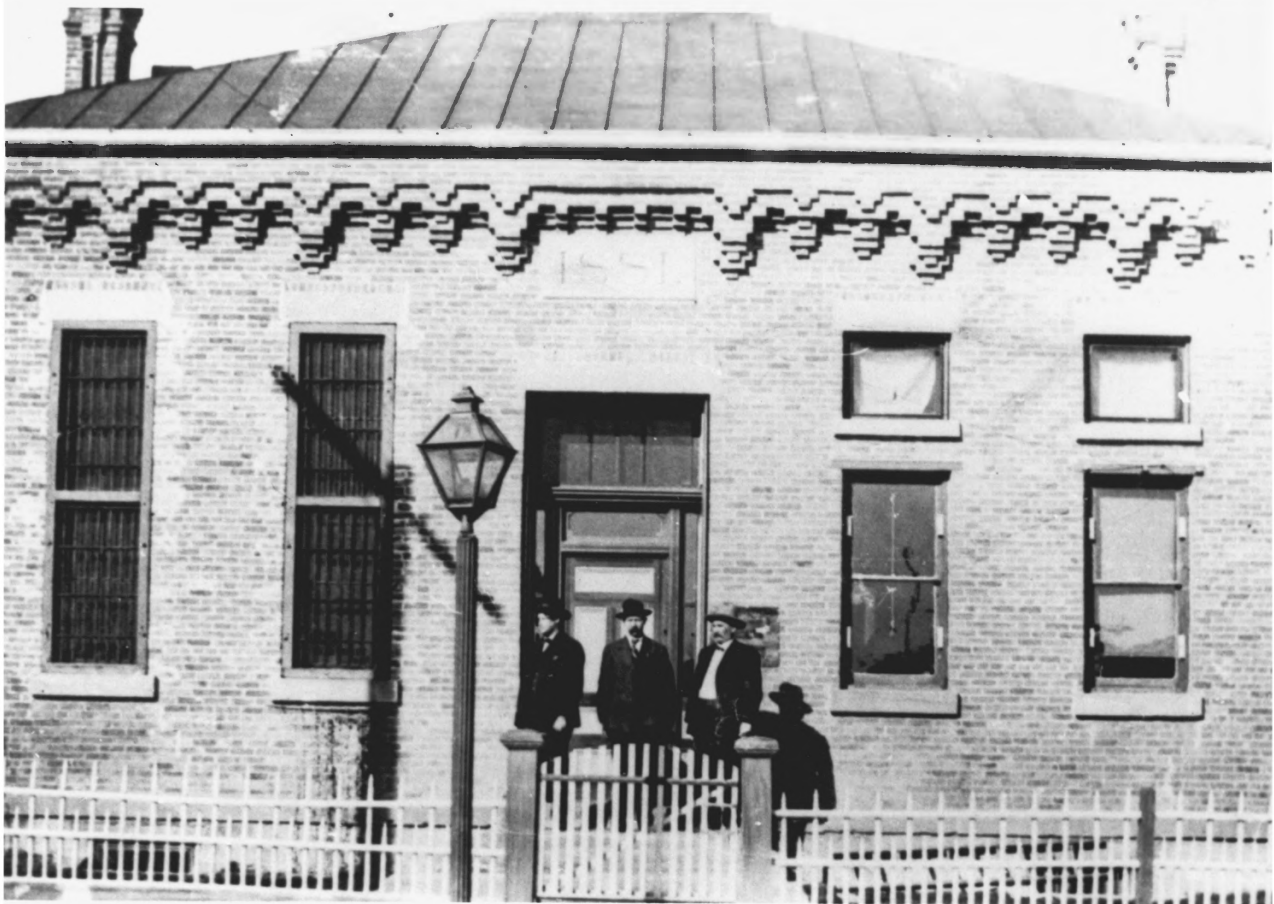
NEGATIVE FILED AT Recreation and Parks Division, Department of Fish and Game  
Helena, Montana

**4 IDENTIFICATION**

DESCRIBE VIEW, DIRECTION, ETC. IF DISTRICT, GIVE BUILDING NAME & STREET

PHOTO NO. 1

Looking south at the Grand Union Hotel



© HOU TIAN U CO.  $\sqrt{x} \angle$  ~~0001~~ 1 ~~111~~  
1885