



## 6. Function or Use

Historic Functions (enter categories from instructions)

Transportation/Road-Related

Current Functions (enter categories from instructions)

Transportation/Road-Related

## 7. Description

Architectural Classification

(enter categories from instructions)

Other: Swing through truss

Materials (enter categories from instructions)

foundation concrete

walls steel

roof

other

Describe present and historic physical appearance.

☒ See continuation sheet

**United States Department of the Interior  
National Park Service**

**National Register of Historic Places  
Continuation Sheet**

Section number 7 Page 1

---

**SUMMARY**

The Madison Bridge is a steel, four span bridge of 921 foot length, comprised of three Parker through trusses of 162 feet each, the center-bearing swing span 230 feet long, and two I-beam approaches of 107 feet, one on each end. Spanning the St. Francis River in a southwest to northeast direction, the Parker truss swing span is the third span. When the bridge is turned, two channels one hundred feet wide are opened for river traffic.

**ELABORATION**

The twelve panel swing span and the eight panel fixed spans have single diagonal bracing with additional horizontal members at mid-panel height, as seen in the plan drawings. The two center panels of each fixed span has two diagonal braces. The members in the four spans are built-up from channels, angles, batten plates, continuous plates, or lacing bars riveted together. All members are rigidly connected to each other with rivets. The bottom chord is made of two channels connected by batten plates, staggered from the top to the bottom of the chord at three foot intervals. The bottom chord of the swing span is cambered so that the ends are one half inch below grade when the span is open. The top chord, made of two channels with a continuous top plate and lacing bars, reaches a maximum height of 32 feet in the swing span and 29 feet in the other three. The vertical and web members are I-sections with the web oriented transverse to the longitudinal direction of the bridge. The web members in the center two panels of the swing span are two channels with lacing on either side.

The floor system and lateral bracing are essentially the same for the two types of span. Ten I-beam stringers run longitudinally, connecting twenty inch deep I-beam girders at each panel point. The original floor deck, laminated timber with asphalt planks, was replaced in 1953 with a concrete slab deck and refloored again in 1983. Lateral bracing is achieved in three ways. Two angles laced together span panel points diagonally between the top chords of the trusses, and double angles laterally brace the floor. Sway bracing is formed at each panel point by three foot deep, double intersection Warren trusses.

The center two panels of the swing span are supported on the center-bearing pivot made of cast steel and phosphor-bronze and hardened tool steel discs. The four balance wheels revolve on a 24 foot diameter reinforced concrete pier. The swing span was turned by two men operating a six foot hickory handle that keyed into a shaft near the center of the floor deck. This first shaft was short and operated a small gear, less than one foot in diameter. This gear engaged a larger gear, of three foot diameter. A shaft from the second gear transmitted the torque down to another small gear on a gear track on the top of the pier. This track travels quarterway around the pier and allowed the bridge to swing 90 degrees clockwise. The combination of the two small gears and one large decreased the number of turns the operator had to make to open and close the bridge.

Before the bridge was turned, the operator released four wedges at the ends, two wedges at the center, and latches at the ends of the span with a captain's wheel near the hickory handle. The sedges direct the bridge back into place when it is closed. Manganese-bronze was applied to the sliding faces of the wedges to reduce friction between the moving parts involved. The latches held the swing span closed.

## 8. Statement of Significance

Certifying official has considered the significance of this property in relation to other properties:

☐ nationally

☒ statewide

☐ locally

Applicable National Register Criteria ☒ A ☐ B ☒ C ☐ D

Criteria Considerations (Exceptions) ☐ A ☐ B ☐ C ☐ D ☐ E ☐ F ☐ G

Areas of Significance (enter categories from instructions)

Transportation

Engineering

Period of Significance

1933-1939

Significant Dates

1933

Cultural Affiliation

N/A

Significant Person

N/A

Architect/Builder

Architect: Arkansas Highway & Transportation

Builder: Wisconsin Bridge & Iron Company

State significance of property, and justify criteria, criteria considerations, and areas and periods of significance noted above.

☒ See continuation sheet



## 9. Major Bibliographical References

See Historic Bridges of Arkansas, Multiple Property Nomination, Section H.

### Previous documentation on file (NPS):

- ☐ preliminary determination of individual listing (36 CFR 67) has been requested
- ☐ previously listed in the National Register
- ☐ previously determined eligible by the National Register
- ☐ designated a National Historic Landmark
- ☐ recorded by Historic American Buildings Survey # \_\_\_\_\_
- ☒ recorded by Historic American Engineering Record # HAER No. AR-20

☐ See continuation sheet

### Primary location of additional data:

- ☒ State historic preservation office
- ☐ Other State agency
- ☒ Federal agency
- ☐ Local government
- ☐ University
- ☐ Other

### Specify repository:

U.S. Library of Congress

## 10. Geographical Data

Acreeage of property Less than one acre

### UTM References

A 

1	5
---	---

7	0	8	6	3	5
---	---	---	---	---	---

3	8	7	9	1	6	0
---	---	---	---	---	---	---

Zone Easting Northing

B 

1	5
---	---

7	0	8	8	6	0
---	---	---	---	---	---

3	8	7	9	3	4	5
---	---	---	---	---	---	---

Zone Easting Northing

☐ See continuation sheet

### Verbal Boundary Description

Beginning at a point approximately 8280 feet north of the intersection of U.S. Highway 70 and State Highway 50, the St. Francis River Bridge starts here at the west abutment, then continues east across the St. Francis River for approximately 921 feet, where it terminates at the east abutment.

☐ See continuation sheet

### Boundary Justification

The boundary includes the main turn span, secondary spans, piers and abutments that are historically associated with this property.

☐ See continuation sheet

## 11. Form Prepared By

name/title Michael Swanda, Survey Coordinator

organization Arkansas Historic Preservation Program

street & number 225 East Markham Street

city or town Little Rock

date February 5, 1990

telephone (501) 371-2763

state Arkansas zip code 72201

**United States Department of the Interior  
National Park Service****National Register of Historic Places  
Continuation Sheet**Section number 8 Page 1**SUMMARY**

The bridge over the St. Francis River on U.S. 70, constructed by the Wisconsin Bridge and Iron Company, was part of a 1930's highway and development project. Built during the Arkansas Highway and Transportation Department Era: 1923-1939, the route development involved a new bridge location, which caused some public disapproval, though the design itself was not subjected to public objections. Comparable with the Black River Bridge at Pocahontas (HAER NO. AR-8) the St. Francis River Bridge differs in its historical context and in its structural details. It is, with the bridge at Pocahontas, one of three swinging road bridges in the state. As such, it is nominated under Criteria A and C with statewide significance.

**ELABORATION****MEMPHIS TO LITTLE ROCK**

"The first mail route established between Little Rock and Memphis commenced operation in 1824 over practically the exact route of the present (1936) U.S. Highway 70." This route known as the "Trail of Tears" is the route used in moving the Cherokee Indians from their lands east of the Mississippi to those in the west".<sup>1</sup>

U.S. Highway No. 70, part of which formed the historic link between Memphis, Tennessee and Little Rock, Arkansas, was developed in the early decades of this century as one of the most important routes in the State of Arkansas.<sup>2</sup> Its informal title, "The Broadway of America" registered its national importance. Highway 70, between these two cities, formed a part of the route from the Atlantic to the Pacific coast, and its historic development characterized it as one of the most interesting overland routes in the State.

The earliest development of the route between Little Rock and Memphis took place in 1821 when, by an act of Congress passed in that year, "a road from Memphis to Fort Smith via Little Rock was authorized"<sup>3</sup> Its development was further stimulated by its establishment as a mail route in 1824. The road, later referred to as the Bankhead Highway, was already among the most important in the state.

It was the railroad, however, which first contributed to the real improvement of the route between Little Rock, and Memphis, an improvement further stimulated by the increasing importance of Little Rock. The Memphis and Little Rock Railroad Company, incorporated on January 10, 1853, and later absorbed into the Chicago, Rock Island and Pacific Railroad Company, was the first to develop the overland route between the cities. It has been noted that:

"On February 20, 1862, that company advertised that trains were operating between DeValls Bluff and Little Rock and it was already operating between the West Bank of the Mississippi River and Madison, Arkansas."<sup>4</sup>

Its development faced the same two problems that characterized the development of Highway 70, the river crossings at Madison, over the St. Francis River, and DeValls Bluff, over the White River.

The passage between DeValls Bluff and Madison, interrupted by the rivers, was by steamer and coach. At this period the Memphis and Little Rock Railroad Company could advertise as an attraction "Only twelve hours staging between Little Rock and Memphis."<sup>5</sup> The costly and complex river crossings at DeValls Bluff and

**United States Department of the Interior  
National Park Service****National Register of Historic Places  
Continuation Sheet**Section number 8 Page 2

Madison, and the railroute between these towns, was completed by 1871. By 1936 the travel time between Little Rock and Memphis was reduced to two hours and forty-five minutes.<sup>6</sup>

The road route between Memphis and Little Rock, designated in the 1920's as State Highway 70 under the State Highway System, faced similar obstructions from the White River and the St. Francis River. The development of a modern vehicular route between Memphis and Little Rock involved, as an essential prerequisite, the bridging of these rivers. Highway 70, following a similar route to that established by the Memphis and Little Rock Railroad Company, crossed the White River and the St. Francis River at locations near the railroad crossings, at DeValls Bluff and at Madison.

**THE NEW SITE**

The redevelopment of Highway 70 between Forrest City, St. Francis County, and West Memphis was a project undertaken by the Arkansas State Highway Department from the late 1920's.<sup>7</sup> An essential part of this project was the bridging of the St. Francis River near Madison. In July of 1929, L.N. Edwards, Senior Highway Bridge Engineer submitted a report on the proposed new site for the bridge over the river.<sup>8</sup> The new site was required due to the improved routing of No. 70, and its projected location was "about one and three quarter miles upstream from the old bridge."<sup>9</sup>

The new bridge was to cross the St. Francis River "at about the mid-length of a straight length of river about 1 mile in length."<sup>10</sup> The advantages of this new site were many, not only was it in keeping with the new and improved road line, but it also provided an ideal point for crossing the river.

As the river was considered a navigable river at this stage of its course, consideration had to be made of any river traffic that might occur. The new site did not endanger any river traffic as:

"The distance of one third to one half mile of distance from either of the curves will provide ample sight distance for navigation, as well as water area in which a river craft may maneuver, in the event of delays or difficulties arising in the operation of the movable span of the bridge."<sup>11</sup>

The new site was also ideal with respect to the new line of the highway. The projected Highway 70 route leading to this site:

"avoided the construction of the highway across several small lakes and sloughs, likely to involve considerable cost for bridges and embankments"<sup>12</sup>

During the public hearings on the projected bridge, held in 1932, objections were voiced by concerned parties regarding the new location of the bridge. It was felt, by local people, that the new site and its new highway route would unnecessarily remove trade from the town. However, the suitability of this site, with respect to the crossing and to the new highway route, was to prevail over these objections.

**ST. FRANCIS RIVER**

The St. Francis River in the region of Madison was considered a navigable water by the War Department. Consequently a legislative and legal process, involving a special act of Congress and specific War Department approval, was required to be undertaken by any person or persons intending to build a bridge over

**United States Department of the Interior  
National Park Service**

**National Register of Historic Places  
Continuation Sheet**

Section number 8 Page 3

---

such waters.<sup>13</sup> The object of this process was to ensure the free passage of river traffic during and after the construction of the bridge.

In a letter of January 12, 1931, Dwight H. Blackwood, Chairman of the State Highway Commission, requested Congressman W.J. Driver to pass an act in Congress granting permission to

"the Arkansas State Highway Commission and their successors and assigns to construct a free highway bridge and approaches thereto across the St. Francis River, at a point suitable to the interests of navigation, at or near Madison, Arkansas, on State Highway Number 70."<sup>14</sup>

This was submitted to the House of Representatives as a bill, H.R. 16419, on January 21, 1931, and approved by the 71st Congress as Act 823 on March 3, 1931.<sup>15</sup>

Despite the passing of the act it was noted by the Highway Department in a letter of March 14, 1931, that "although an Act of Congress to construct this bridge has been secured I do not believe that bids will be asked for the construction of this bridge this year. We have not started on the plans as yet."<sup>16</sup> According to the Congressional act of 1906 regarding bridge building over navigable waters it was required to commence bridge construction within one year of the passing of any act granting permission, unless otherwise specified.<sup>17</sup> The bridge over the St. Francis River was not commenced within the required time and, consequently, a new congressional act was required.

On February 10, 1932, Blackwood contacted Driver, once again, asking him to submit a bill granting an extension in time.<sup>18</sup> This bill was submitted to the House of Representatives as H.R. 9264 on February 12, 1932. In Act 81 of the 72nd Congress, approved on April 15, 1932, permission was given to the State Highway Commission allowing for this extension in time.<sup>19</sup>

**WAR DEPARTMENT**

With Congressional approval to build a bridge over the St. Francis River granted, further permission was required from the War Department and the Chief of Engineers. Application was made to the War Department on August 30, 1932 and approval received on October 31, 1932.<sup>20</sup> However, two complications arose prior to the granting of that approval. First, the War Department was concerned about the status of the old bridge after its decommissioning and required that the responsibility for the old bridge be returned to the county with the opening of the new bridge. The second problem faced by the Highway Department was a degree of public objection to the new location of the projected bridge. Both of these questions had to be solved prior to receiving approval for the new bridge from the War Department.

**OWNERSHIP OF OLD BRIDGE**

It was recorded in a letter of September 5, 1932, that the War Department required a court order from St. Francis County specifically stating that the county would "resume ownership" of the old St. Francis River bridge and "maintain said bridge in connection with the County Highway System."<sup>21</sup>

The required court orders stating that the county would "resume ownership" of the old bridge was granted on September 5, 1932 and immediately forwarded to the War Department by the State Highway Department.



United States Department of the Interior  
National Park ServiceNational Register of Historic Places  
Continuation SheetSection number 8 Page 4

The court order recognized that the old bridge "must be torn down when the new bridge is constructed and the present bridge is abandoned by the State Highway System, unless proper provision is made for its maintenance."<sup>22</sup> It further recognized that "The value of this existing bridge to the county will be too great to permit its being demolished."<sup>23</sup>

## PUBLIC OBJECTIONS

Public opposition to the new bridge over the St. Francis River was founded in an objection to the new route of Highway 70. This route, selected in 1929, involved the construction of a highway parallel to the old Route 70. The new route was to bypass the old, thereby making it redundant.<sup>24</sup>

As essential part of the new route was the crossing of the St. Francis River, some two miles from the previous crossing. Those who opposed the new routing of Highway 70 felt that if the projected crossing could be brought nearer the original crossing, the old road could be retained and developed. The War Department hearing on the citing of the projected bridge, it was hoped, might provide a suitable platform for voicing objections. The hearing, scheduled for October 4, 1932, was primarily intended to establish the effect the bridge might have on navigating the river. However the local paper reported that:

"it is understood that a number of people who are desirous that the bridge be constructed at a point near the present bridge will attend the hearing and will make a plea for the abandonment of the proposed new location."<sup>25</sup>

The Highway Department also anticipated public objections at the hearing.<sup>26</sup> To "expedite the transactions" they requested that the War Department hold the hearing on the St. Francis River Bridge in conjunction with hearings on the Black River Bridge and the St. Francis River Bridge at Lake City.<sup>27</sup> This was intended to promote a smooth passage of the Route 70 bridge at the hearings.

The public objections raised at the hearing were over-ruled by the War Department engineers on the grounds that the hearing was concerned with navigation only. The rejection was reported in the local newspaper as follows:

"At the public hearing held by the U.S. Engineers at West Memphis, yesterday, the protests...on the proposed change of the location of the bridge to a point two miles North of Madison was presented by C. W. Norton. The engineers, however, declined to interfere with the location question, ruling that the hearing being conducted by them for the War Department was solely as to the effect the bridge would have upon navigation."<sup>28</sup>

## CONTRACT AND CONSTRUCTION

With approval from the War Department, the State Highway Department could proceed with the bridge on November 15, 1932, the contract for the new bridge over the St. Francis river was let with an estimated cost of \$213,905.20. The winner of the contract, with a low bid of \$183,105.86, was the Missouri Valley Bridge and Iron Company.<sup>29</sup>

Construction was immediately commenced but, inconvenienced by floods, progressed erratically. By April, 1933, it was reported that "the steel work has been placed on the east side of the river, three of the

United States Department of the Interior  
National Park Service

National Register of Historic Places  
Continuation Sheet

Section number 8 Page 5

---

concrete piers having been completed, one in the river and two on land."<sup>30</sup> Construction crews were "working night and day in order to complete construction as speedily as possible."<sup>31</sup>

OPENING

The bridge was completed by August and on September 2, 1933, the Daily Forrest City Times Herald published the program for the official opening and dedication of the new bridge. A whole day, Monday, September 4, was to be devoted to the bridge opening.<sup>32</sup>

Festivities began at 12 noon, with the "Stuttgart Girls Drum and Bugle Corps Drill" opening the day. Water sports, speeches and parades provided further entertainment for the ten thousand visitors to the bridge. The climax of the evening was the bridge dedication ball, begun at 10 o'clock, which "brought the evening to a close at 3 a.m."<sup>33</sup>

The speech dedicating the bridge, originally to have been given by Governor J. Marion Futrell, was given by County Judge Miles, as the Governor could not attend due to illness. The bridge was then christened by the bridge queen, Miss Nana Jones, who "arrived with her eleven attendants on a prettily decorated barge."<sup>34</sup>

Perhaps the proudest moment of the day was when Senator Norfleet read a telegram from F.O. Mackey of Arizona President of the Broadway of American Association who wrote:

"On behalf of the Broadway of American Association, kindly convey to your Governor and people of the State of Arkansas sincere thanks and deep appreciation of their wonderful efforts in completing this link of the Broadway, the St. Francis River Bridge. Wishing you every success in your celebration and only regret I cannot be with you at the fish fry."<sup>35</sup>

The people of St. Francis County were re-affirmed as members of the inter-state elite who lived and worked by Route 70, part of the Broadway of America.

United States Department of the Interior  
National Park Service

National Register of Historic Places  
Continuation Sheet

Section number 8 Page 6

---

ENDNOTES

1. Murray, J.C. "State's Fine Transportation Facilities." Arkansas Centennial 1836-1936. Arkansas Democrat, 1936, p.64.
2. *ibid.*, p. 65
3. *ibid.*, p. 64.
4. *ibid.*
5. *ibid.*
6. *ibid.*, p. 65.
7. c.f. Arkansas State Highway Commission, Ninth Biennial Report, 1930.
8. Bridge Memorandum, L.N. Edwards, Senior Highway Engineer, July 31, 1929, pp.2-3. AHTD Microfilm Files.
9. *ibid.*
10. *ibid.*, p. 3.
11. *ibid.*, p. 2.
12. *ibid.*
13. HAER Report AR-9: "Black River Bridge." Historic American Engineering Record, 1988.
14. Dwight H. Blackwood, Chairman State Highway Commission, to W.J. Driver, Congressman, First District; January 12, 1931. AHTD Microfilm Files.
15. On file in AHTD Microfilm Files.
16. R. Archibald, Assistant Bridge Engineer, to Virginia Bridge and Iron Co.; March 14, 1931, AHTD Microfilm Files.
17. HAER Report AR-9: "Black River Bridge." Historic American Engineering Record, 1988.
18. Blackwood to Driver; February 10, 1921, AHTD Microfilm Files.
19. On file AHTD Microfilm Files.
20. On file AHTD Microfilm Files.

United States Department of the Interior  
National Park Service

National Register of Historic Places  
Continuation Sheet

Section number 8 Page 7

---

21. N.B. Garver, Bridge Engineer, to W.G. Huxtable, District Engineer, Forest City; September 5, 1932. AHTD Microfilm Files.

22. Court order enclosed by Garver to Brehon Somervell, District Engineer, U.S. Engineer Office; September 12, 1932. AHTD Microfilm Files.

23. *ibid.*

24. c.f. Forrest City Times Herald, May, 1929. Particular reference may be made to "New Route 70 to Memphis Selected", *loc.cit.*, May 9, 1929, p.1 and "Proponents of New Road to Memphis Waging Strong Fight", *loc.cit.*, May 30, 1929, p.1.

25. Daily Forrest City Times Herald, Monday, October 3, 1932, p.1.

26. Garver to Huxtable; September 29, 1932, AHTD Microfilm Files.

27. Garver to Somervell; September 2, 1932, AHTD Microfilm Files.

28. "Immediate Construction of Bridge Favored by State Highway Commission" Daily Forrest City Herald, October 5, 1932.

29. Bridge No. 1391, Card Index. AHTD.

30. "Work on Madison Bridge Progressing", Daily Forrest City Times Herald, April 10, 1933, p.1.

31. *ibid.*

32. "Program" Daily Forrest City Times Herald, September 2, 1933, p.1.

33. "Bridge Dedication Ceremonies Witnessed by Large Crowd", Daily Forrest City Times Herald, September 5, 1933. p.1.

34. *ibid.*

35. *ibid.*, and "Colorful Rites at Bridge Dedication", Arkansas Gazette, September 5, 1933.



2/23/90

United States Department of the Interior  
National Park ServiceNational Register of Historic Places  
Continuation Sheet

Section number \_\_\_\_\_ Page \_\_\_\_\_

Historic Bridges of Arkansas MPS	Baxter County, et al.	Date Listed
23. Lakeshore Drive Bridge	Entered in the National Register	4/9/90
24. Lincoln Avenue Viaduct		4/9/90
25. Second Street Bridge		4/9/90
26. Black River Bridge		4/9/90
27. St. Francis River Bridge	AR 18	4/9/90
28. Saline River Bridge		4/9/90
29. Jenny Lind Bridge	Substantive Review	4/6/90
30. Milltown Bridge	Substantive Review	4/6/90
31. Little Cossatot River Bridge	Substantive Review	4/6/90
32. Quachita River Bridge	Entered in the National Register	4/9/90
33. Wyman Bridge		4/9/90
34. Judsonia Bridge	Entered in the National Register	4/9/90
35. Augusta Bridge	Entered in the National Register	4/9/90
36. Achmun Creek Bridge	Substantive Review	4/9/90
37. Spring Lake Bridge	Substantive Review	Ret
38. St. Francis River Bridge	NS-70 AR 20	4/9/90
39. Galla Creek Bridge		

UNITED STATES DEPARTMENT OF THE INTERIOR  
NATIONAL PARK SERVICE

NATIONAL REGISTER OF HISTORIC PLACES  
EVALUATION/RETURN SHEET

REQUESTED ACTION: NOMINATION

PROPERTY NAME: St. Francis River Bridge

AR 20

MULTIPLE NAME: Historic Bridges of Arkansas MPS

STATE & COUNTY: ARKANSAS, St. Francis

DATE RECEIVED: 2/23/90  
DATE OF 16TH DAY: 3/22/90  
DATE OF WEEKLY LIST:

DATE OF PENDING LIST: 3/06/90  
DATE OF 45TH DAY: 4/09/90

REFERENCE NUMBER: 90000516

NOMINATOR: STATE

REASONS FOR REVIEW:

APPEAL: N DATA PROBLEM: N LANDSCAPE: N LESS THAN 50 YEARS: N  
OTHER: N PDIL: N PERIOD: N PROGRAM UNAPPROVED: N  
REQUEST: N SAMPLE: N SLR DRAFT: N NATIONAL: N

COMMENT WAIVER: N

☒ ACCEPT ☐ RETURN ☐ REJECT 4/9/90 DATE

Entered in the  
National Register

ABSTRACT/SUMMARY COMMENTS:

RECOM./CRITERIA \_\_\_\_\_  
REVIEWER \_\_\_\_\_  
DISCIPLINE \_\_\_\_\_  
DATE \_\_\_\_\_

DOCUMENTATION see attached comments Y/N see attached SLR Y/N

CLASSIFICATION

\_\_\_count \_\_\_resource type

STATE/FEDERAL AGENCY CERTIFICATION

FUNCTION

\_\_\_historic \_\_\_current

DESCRIPTION

\_\_\_architectural classification  
\_\_\_materials  
\_\_\_descriptive text

SIGNIFICANCE

Period Areas of Significance--Check and justify below

Specific dates Builder/Architect  
Statement of Significance (in one paragraph)

\_\_\_summary paragraph  
\_\_\_completeness  
\_\_\_clarity  
\_\_\_applicable criteria  
\_\_\_justification of areas checked  
\_\_\_relating significance to the resource  
\_\_\_context  
\_\_\_relationship of integrity to significance  
\_\_\_justification of exception  
\_\_\_other

BIBLIOGRAPHY

GEOGRAPHICAL DATA

\_\_\_acreage \_\_\_verbal boundary description  
\_\_\_UTMs \_\_\_boundary justification

ACCOMPANYING DOCUMENTATION/PRESENTATION

\_\_\_sketch maps \_\_\_USGS maps \_\_\_photographs \_\_\_presentation

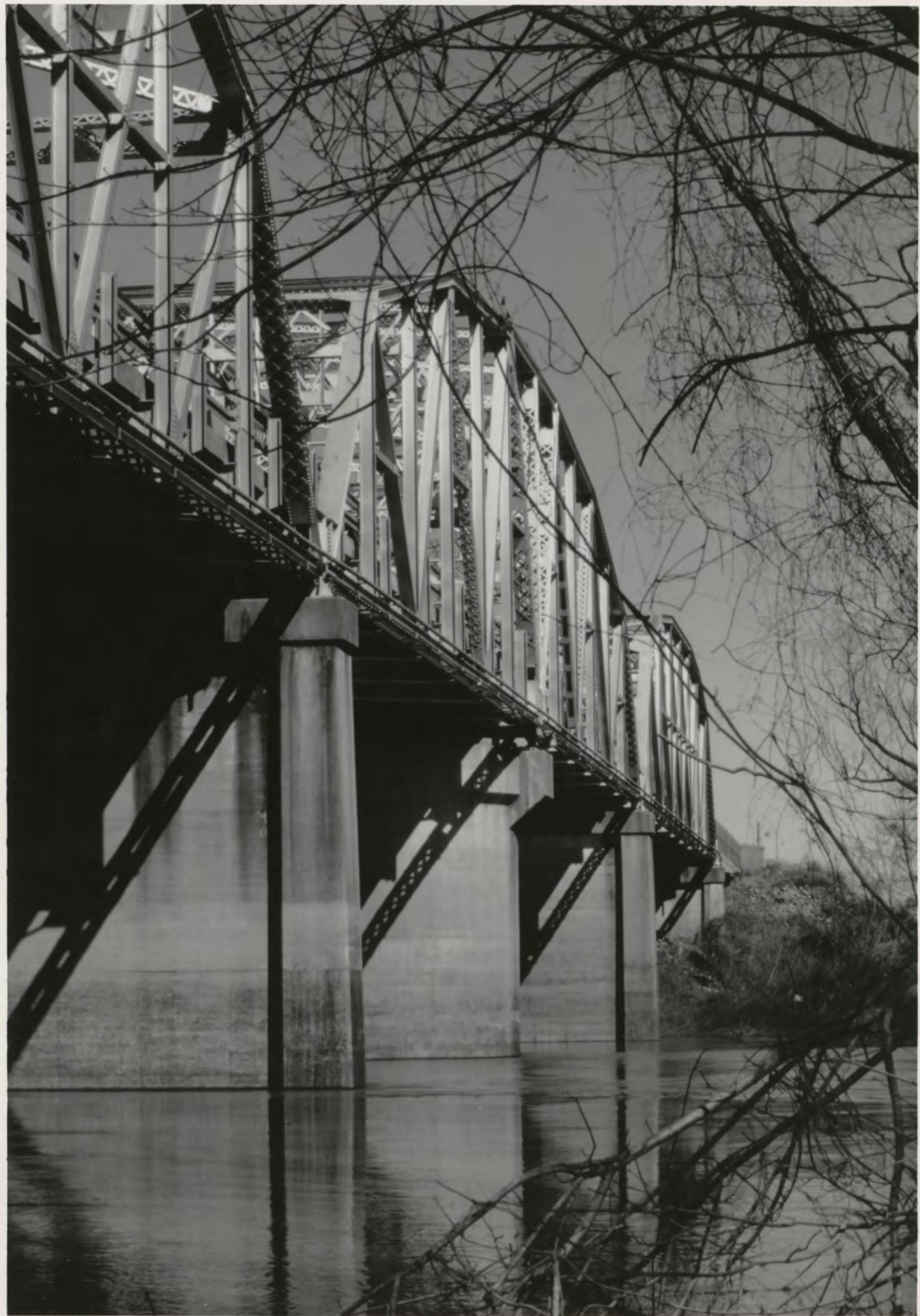
OTHER COMMENTS

Questions concerning this nomination may be directed to

Phone

Signed Date







ST. FRANCIS RIVER BRIDGE

MADISON, ARKANSAS

PHOTOGRAPHER, MICHAEL SWANDA

AUGUST, 1987

NEGATIVE ON FILE AT ARPP

VIEW LOOKING NORTH





ST. FRANCIS RIVER BRIDGE AT MADISON

MADISON, ARKANSAS

PHOTOGRAPHER, MICHAEL SWANOA

AUGUST, 1987

NEGATIVE ON FILE AT AHPP

VIEW LOOKING EAST





ST. FRANCIS RIVER BRIDGE

MAOISON, ARKANSAS

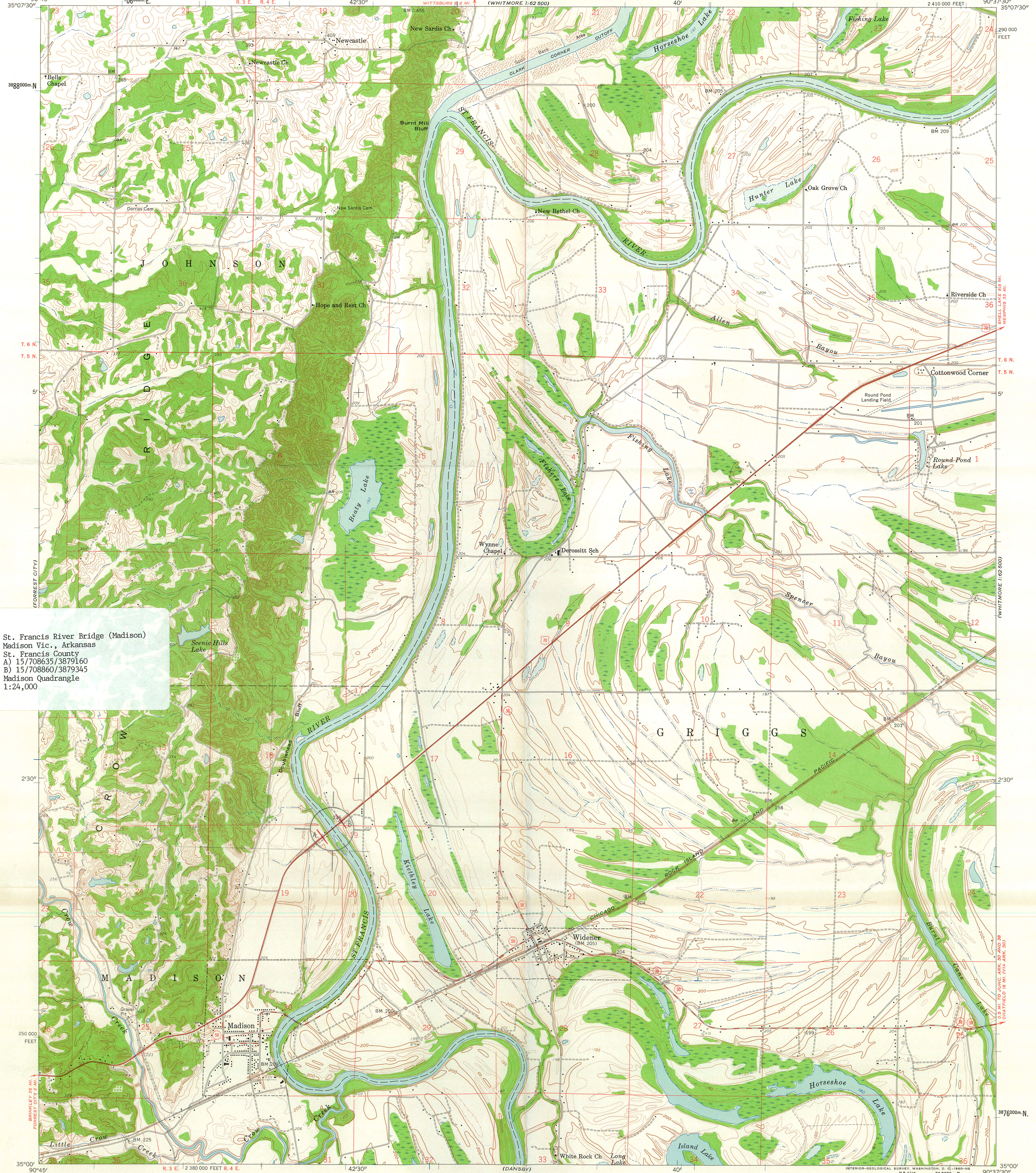
PHOTOGRAPHER, MICHAEL SWANDA

AUGUST, 1987

NEGATIVE ON FILE AT AHPP

DETAIL VIEW OF TURNING MECHANISM, LOOKING NORTH





St. Francis River Bridge (Madison)  
Madison Vic., Arkansas  
St. Francis County  
A) 15/708635/3879160  
B) 15/708860/3879345  
Madison Quadrangle  
1:24,000

Mapped, edited, and published by the Geological Survey  
Control by USGS, USC&GS, and USCE  
Topography from aerial photographs by photogrammetric methods  
and by planetable surveys 1960. Aerial photographs taken 1957  
Polyconic projection. 1927 North American datum  
10,000-foot grid based on Arkansas coordinate system, north zone  
1000-meter Universal Transverse Mercator grid ticks,  
zone 15, shown in blue

TRUE NORTH  
MAGNETIC NORTH  
APPROXIMATE MEAN  
DECLINATION, 1960

SCALE 1:24,000  
1 1000 0 1000 2000 3000 4000 5000 6000 7000 FEET  
1 1 2 3 4 5 6 7 8 9 10 KILOMETER  
CONTOUR INTERVAL 10 FEET  
DOTTED LINES REPRESENT 5-FOOT CONTOURS  
DATUM IS MEAN SEA LEVEL



ROAD CLASSIFICATION  
Heavy-duty ——— Light-duty ———  
Medium-duty ——— Unimproved dirt ———  
U.S. Route ——— State Route ———

MADISON, ARK.  
SW 1/4 WHITMORE 15' QUADRANGLE  
N 3500-W9037.5/7.5  
1960