



NO  
TRUCKS  
OVER  
SEVEN TONS  
PERMIT REQUIRED



Downtown Anniston - Photo # 1  
HISTORIC DISTRICT

Radio Bldg. 1330 Noble St  
ANNISTON, AL (CALHOUN CO.)

(Roll # 3-1A)



COMMUNITY ACTION AGENCY  
PROJECT Producing Ambitious Youth

put a little  
**CLASS**  
In your nightlife.  
STUDY PERIOD 6-8pm SUN-THU  
FOR OPEN ENROLLMENT

Downtown Anniston

(Photo #2)

HISTORIC DISTRICT

SCOUT HUT, 129 W. 13TH ST.

ANNISTON, AL (Calhoun Co.)

(ROLL # 1-21)





APPLIANCE  
SERVICE CO.

USED APPLIANCE CENTER

CENTRAL  
APPLIANCE  
SERVICE

Downtown Anniston

HISTORIC DISTRICT

200-4; 206; 208 W. 13TH ST.  
ANNISTON, AL (Calhoun Co.)

(Photo # 3)

(Roll # 1-23)



RITZ  
*Cafe*

RITZ ROOMING HOUSE  
*Cafe*

RITZ ROOMING HOUSE  
236-4943  
*Coca-Cola*

13TH STREET

DIN  
MAIL

FORD

Downtown Anniston (Photo #4)  
HISTORIC DISTRICT

214, 218 W. 13TH ST.

ANNISTON, AL (Calhoun Co.)

(Roll #1-24)

KELLY SUPPLY CO.



Downtown Anniston (Photo #5)

HISTORIC DISTRICT

Old Union Depot, 300 Walnut Ave

ANNISTON, AL (Calhoun Co.)



Downtown Anniston  
Historic District

(Photo #6)

Union Depot Warehouse, 300 Walnut  
Anniston, AL (Calhoun Co.)



WHOLESALE  
DRESSED POULTRY  
PHONE 230 0753  
CORPORATION

MADDEN POULTRY CO.



Downtown Anniston  
HISTORIC DISTRICT

(Photo #7)

Madden Poultry Co., 208 W. 12th St  
ANNISTON, AL (Calhoun Co.)

(Roll # 5-10)



Downtown Anniston (Photo #8)  
Historic District

122; 126-130 W. 13<sup>TH</sup> ST.  
ANNISTON, AL (Calhoun Co.)

(Roll # 1-22)



Downtown Anniston  
Historic District

(Photo #9)

26-40 W. 13<sup>TH</sup> ST.

ANNISTON, AL (Calhoun Co.)

(Roll # 3-18A)

FAMILY  
LOAN



Downtown Anniston  
Historic District

(Photo #10)

20, 24 W 13<sup>th</sup> St.

ANNISTON, AL (Calhoun Co.)

(Roll #3-17A)



SHOE SHOP

NEW LIFE SHOE SHOP  
TRAINING CENTER Hat & Blouse

HILLS REALTY  
AND  
INSURANCE CO.  
INC.  
HILLS REALTY INSURANCE CO.  
INC.

Antiques  
OLDE TYME SHOPPE

Antiques  
OLDE TYME SHOPPE



Downtown Anniston  
HISTORIC DISTRICT

(Photo #11)

10-14 W. 13<sup>TH</sup> ST.

ANNISTON, AL (Calhoun Co.)

(Roll #3-16A)



Downtown Anniston (Photo #12)  
HISTORIC DISTRICT

West side 1200 Block Noble St.

1224 ; 1226 ; 1228 , 1230 Noble St.

ANNISTON , AL (Calhoun Co.)

(Roll #3-9A)

A black and white photograph of a two-story brick building. The building has a curved roofline and several windows on the second floor. A sign is mounted on the front of the building, and a large tarp covers the ground floor entrance. A tree is on the left, and a brick structure is on the right. A utility wire runs across the top of the image.

HAMILTON  
BAND  
INSTRUMENT CO

Downtown Anniston  
Historic District

(Photo # 13)

Center ; 1226 Noble St.

ANNISTON, AL (Calhoun Co.)

(Roll #3-10A)



Jakia Enterprise

50%  
OFF

DOWNTOWN ANNISTON HISTORIC DISTRICT

PHOTO # 14

1224 Noble St.

ANNISTON, AL (Calhoun Co.)

(Roll #3-11A)





mo//

NEED CREDIT?  
CALL  
1-800-555-1234

RED TAG SALE

NO PARKING

NO PARKING

NO  
PARKING

NO  
PARKING

Downtown Anniston.

(Photo # 15)

HISTORIC DISTRICT

East side 1300 Block Noble St.

ANNISTON, AL (CALHOUN CO.)



CITY  
RESTAURANT

NewChannels  
MULTIMEDIA

CALHOUN

Downtown Anniston. (Photo # 16)  
HISTORIC DISTRICT

1214 ; 1216 ; 1220 Noble St  
ANNISTON, AL (Calhoun Co.)

(Roll # 3-124)



Downtown Anniston

(Photo #17)

HISTORIC DISTRICT

West Side 1200 Block Noble St.

1200; 1214; 1216; 1220 Noble St

ANNISTON, AL (Calhoun Co.)

(Roll #2-7)



Downtown Anniston  
Historic District

(Photo #18)

Looking South on Noble St.  
at 12<sup>th</sup> St

ANNISTON, AL (Calhoun Co.)

(Roll #3-19A)





Courtline CAFE

Williams Sewing Center  
1000 S. 10th St. & 10th St.

Williams Sewing Center  
1000 S. 10th St. & 10th St.

Courtline CAFE



Courtline CAFE

Courtline CAFE

Williams Sewing Center  
1000 S. 10th St. & 10th St.

1900

ONE WAY

Downtown Anniston (Photo #19)  
Historic District

15-19; 25 W. 11th St., (Court House)

ANNISTON, AL (Calhoun Co.)

(Roll #4-6)



Downtown Anniston  
Historic District

(Photo # 20)

ANNISTON Mercantile - Mullinax  
1100 Moore Ave.

ANNISTON, AL (Calhoun Co.)

(Roll #2-6)

ANNISTON  
AUTO PARTS  
EST. 1923

ANNISTON AUTO PARTS COMPANY, INC.

ANNISTON  
AUTO PARTS  
COMPANY, INC.



Downtown Anniston  
HISTORIC DISTRICT

(Photo #21)

120; 126; 130 W. 11th St.

ANNISTON, AL (Calhoun Co.)

(Roll # 2-5)

WINDOWS  
DOORS

ALL KINDS  
FURNITURE

&  
APPLIANCES

WE BUY & SELL DAILY!

**AUCTION**

OPEN TO THE PUBLIC!

WE SELL FOR ANYONE

OPEN

Way!

CAT FLOOR

Downtown Anniston  
Historic District

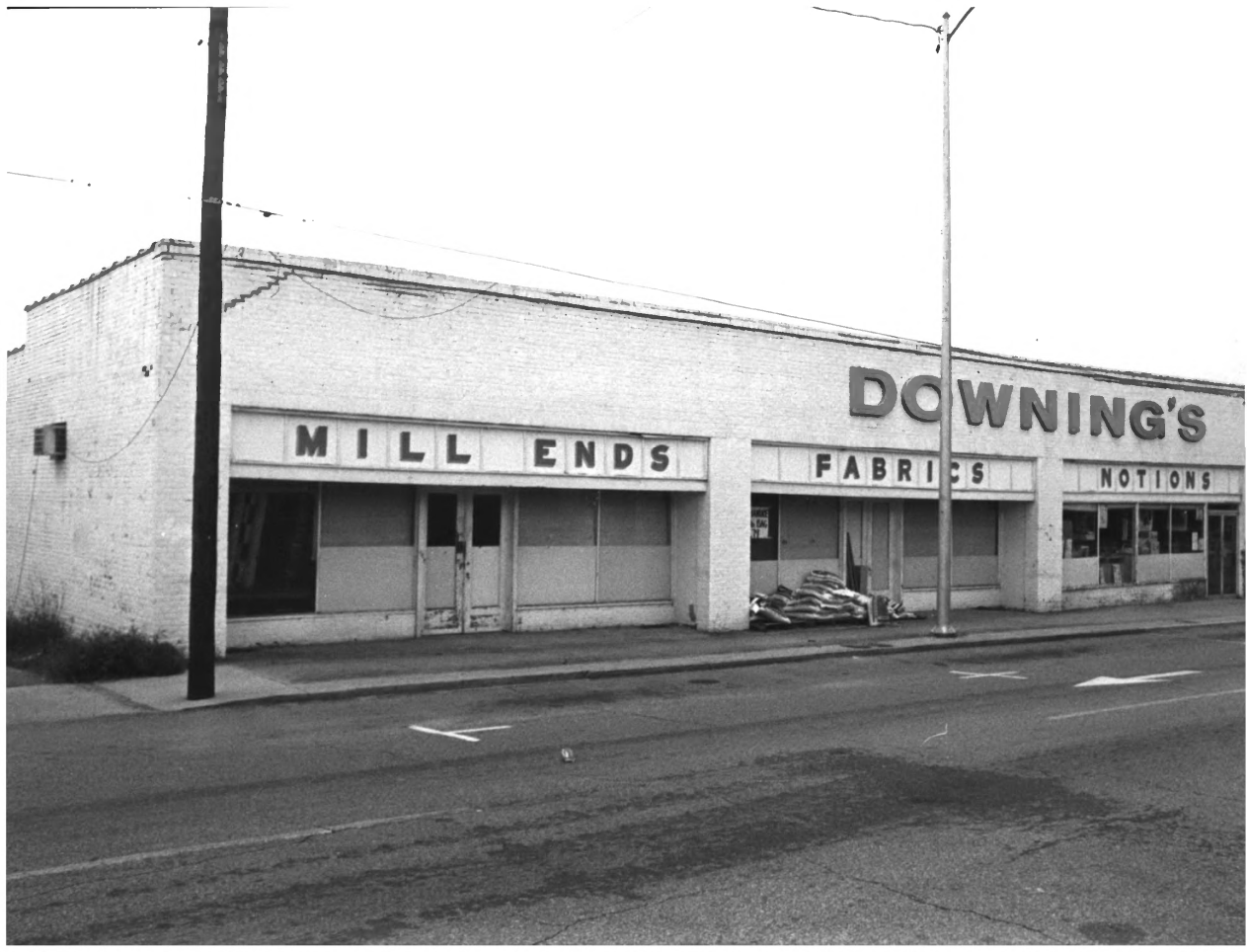
(Photo # 22)

110 W. 11th St.

ANNISTON, AL (Calhoun Co.)

(Roll # 2-4)





MILL ENDS

FABRICS

NOTIONS

DOWNING'S

Downtown Anniston.  
HISTORIC DISTRICT

(Photo # 23)

1026-1030 GURNEE Ave.

ANNISTON, AL (Calhoun Co.)

(Roll #4-8)



Downtown Anniston  
Historic District

(Photo # 24)

1008; 1010; 1016 Gurnee Ave  
ANNISTON, AL (Calhoun Co.)

(Roll # 4-9)



EAST

HAYNES SEWING MACHINE CO  
1000 10th St. N. W. Minneapolis, Minn.

WALSH

SEWING  
MACHINE  
CO

PFAFF

SEWING MACHINES

HAYNES SEWING  
MACHINE CO

EUREKA

PFAFF

Downtown Anniston  
Historic District

(Photo # 25)

1008; 1010 Gurnee Ave.  
ANNISTON, AL (Calhoun Co.)

(Roll #4-10)



AUSTIN & PRATER  
INSURANCE  
CO.  
REAL ESTATE-RENTALS

COLUMBUS FINANCE COMPANY  
*The Loan & Savings Co.*

N 5

Downtown Anniston  
Historic District

(Photo #26)

30-34; 36 W. 11th St.

ANNISTON, AL (Calhoun Co.)

(Roll #2-3)





Downtown Anniston 70 (Photo #27)  
Historic District

26-28 W. 11th St.

ANNISTON, AL (Calhoun Co.)

(Roll #2-2)



Large multi-paned window on the second floor.

Large multi-paned window on the second floor.

Large multi-paned window on the second floor.

Large multi-paned window on the second floor.

Large glass window on the ground floor with a dark panel. Faint text is visible on the glass.

Large glass window on the ground floor with a dark panel. Faint text is visible on the glass.

Large glass window on the ground floor with a dark panel. Faint text is visible on the glass.

Large glass window on the ground floor with a dark panel. Faint text is visible on the glass.

Small street sign on a utility pole.

Downtown Anniston  
Historic District

(Photo #28)

16-24 W. 11th St.

ANNISTON, AL (Calhoun Co.)

(ROLL # 2-1)



CASUAL  
WEDDINGS  
&  
FORMALS

STEWART'S  
TUXEDO  
SHOP

Griffins  
Moorefield  
JEWELERS

SINCE 1898

Griffins JEWELERS

Griffins  
Moorefield

1070

Downtown Anniston  
Historic District

(Photo #29)

1024, 1026; 1028, 1030 Noble St.

ANNISTON, AL (Calhoun Co.)

(Roll # 2-14)

TOP

DOLLAR STORES

Cameo  
BRIDALS  
&  
FORMALS



Downtown Anniston. (Photo #30)  
HISTORIC DISTRICT

1024 Noble St.

ANNISTON, AL (Calhoun Co.)

(ROLL # 2-15)





DIRECT  
FURNITURE MATHEMATICS

Walt's

DIRECT

CRE

OUTLET

Perall

ONE WAY

Downtown Anniston  
HISTORIC DISTRICT

(Photo #31)

West Side, 1000 Block Noble St.  
from 10th Street  
ANNISTON, AL (Calhoun Co.)

(Roll #2-18)



**LUKE & SONS  
PAWN SHOP**

**LUKE & SONS  
PAWN SHOP**

**LUKE & SONS  
PAWN SHOP**

SAIL  
RENT

**PAWN  
SHOP**

DOWNTOWN ANNISTON HISTORIC DISTRICT

17; 15; 13 W. 10<sup>TH</sup> ST.

PHOTO #32

ANNISTON, AL (CALHOUN CO.)

(ROLL #4-5)



Downtown Anniston  
HISTORIC DISTRICT

(PHOTO #33)

33 W. 10<sup>TH</sup> ST.

ANNISTON, AL (Calhoun Co.)

(ROLL #4-22)



**WILDE'S**  
AIR CONDITIONING  
CO., INC.

SALES  
QUALITY  
WORK  
ONLY  
**Carrier**  
SERVICE

**Carrier**  
AIR CONDITIONING  
& HEATING  
MADE IN U.S.A. (C) 1957-1967

WILDE'S  
AIR CONDITIONING CO., INC.  
HEATING AIR CONDITIONING SHEET METAL WORK

WILDE'S  
AIR CONDITIONING CO., INC.  
HEATING AIR CONDITIONING SHEET METAL WORK

ROSEL CITY GLASS CO.

Downtown Anniston-  
Historic District

(Photo # 34)

109, 105-107; 101 W. 10<sup>th</sup> St.  
ANNISTON, AL (Calhoun Co.)

(Roll # 4-21)



# ANNISTON ALIGNMENT INC

BUSHING & WHEEL STRAIGHTENING

WHEEL BALANCING & BRAKES

FRONT & REAR ALIGNMENT

BEAR  
BRAND  
SERVICE



Downtown Anniston  
Historic District

(Photo # 35)

115 W. 10<sup>th</sup> St

ANNISTON, AL

(Calhoun Co.)

(Roll #4-20)



Downtown Anniston  
Historic District

(Photo #36)

125; 123; 121; 119 W. 10th St.  
ANNISTON, AL. (Calhoun Co.)

(Roll #4-19)



Downtown Anniston. (Photo #37)  
Historic District

201 W. 10th St.

ANNISTON, AL (Calhoun Co.)

(Roll #4-16)



Downtown Anniston  
Historic District

(Photo #38)

Looking east on W. 10<sup>th</sup> St.  
ANNISTON, AL (Calhoun Co.)

(Roll #4-18)





Downtown Anniston  
Historic District

(Photo #39)

124; 130 W. 10th St.

ANNISTON, AL (CALHOUN CO.)

(Roll #4-15)



Downtown Anniston

(Photo #40)

HISTORIC DISTRICT

108 ; 112 ; 114 W. 10<sup>th</sup> St.

ANNISTON, AL

(CALHOUN CO.)

(ROLL #4-13)



Downtown Anniston (Photo #41)

HISTORIC DISTRICT

Roof detail of 114 (W. 10<sup>th</sup> St.)

ANNISTON, AL (CALHOUN CO.)

(ROLL #4-14)



AUTO ELECTRIC & CARBURETOR CO.

Downtown Anniston (Photo #42)

HISTORIC DISTRICT

100; 102 W. 10th St.

ANNISTON, AL (CALHOUN CO.)

(Photo #111)





ACME

PAWN SHOP

HALL BUILDING

HALL BUILDING MATERIAL CO.

Gold Bond

Gold Bond

HALLWAY

Downtown Anniston  
Historic District

(Photo #43)

South side of D Block, W. 10th St.  
Anniston, AL (CACHOUN CO.)

(Roll #4-23)



Downtown Anniston

(Photo #44)

HISTORIC DISTRICT

912; 914; 920 Noble St.

ANNISTON, AL (CALHOUN CO.)



Downtown Anniston (Photo #45)

HISTORIC DISTRICT

910 Noble St.

ANNISTON, AL (CALHOUN Co.)



ANNIE  
MUSIC

236-3700

GUITAR  
DRUM  
PIANO  
LESSONS  
ALL  
STYLES

MUSIC  
BOOKS  
TEACHERS  
SHEET  
ETC.

WOOD CRAFTS  
OUTLET

908

Downtown Anniston

(PHOTO #46)

HISTORIC DISTRICT

906; 908 Noble St

ANNISTON, AL (CALHOUN CO.)

(ROLL # 2-21)





EYES ASS CENTER

VISION 12

NO TRUCKS  
OVER  
8000 LBS  
GROSS WT



NCS National  
Credit Service



Downtown Anniston  
Historic District

(Photo # 47)

West side 900 Block Noble St 900

902-904; 906 Noble St

ANNISTON, AL (CALHOUN CO.)

(ROLL #2-22)



Downtown Anniston  
Historic District

(PHOTO #48)

19 W. 9TH ST  
ANNISTON, AL

(CALHOUN CO.)

(ROLL # 5-15)



AMSouth Bank



HOME SUPPLY & ETC.

DRESS FASHION

Downtown Anniston (Photo #49)  
Historic District  
East side 900 Block Noble St  
ANNISTON, AL (CALHOUN CO.)

(Roll #2-23)



AMSOUTH

AMSOUTH Bank

WILLIAMS BROTHERS  
JEWELERS

DL

Downtown Anniston

(Photo # 50)

HISTORIC DISTRICT

East side 900 Block Noble St  
ANNISTON, AL (CALHOUN CO.)

(Roll # 4-0)





Down town Anniston (PHOTO # 51)  
Historic District

First level detail of 931 Noble St.  
ANNISTON, AL (CALHOUN CO.)

(ROLL #4-3)



Downtown Anniston  
Historic District

(Photo #52)

931 Noble St.

ANNISTON, AL (CALHOUN CO.)

(ROLL #4-4)



COUCH'S JEWELERS

Downtown Anniston

(PHOTO # 53)

HISTORIC DISTRICT

11; 15 E. 10TH ST.

ANNISTON, AL (CALHOUN CO.)



TAKE FIVE

DELI • BAR

DELI • BAR

WILKINSON

AMC

Downtown Anniston (Photo # 54)  
Historic District

1007-1009 ; 1005; 1001 Noble St.  
ANNISTON, AL (CALHOUN CO.)

(Roll #2-17)



NEW  
WORLD  
COLLEGE

DIAMOND MERCHANTS  
STERLING  
JEWELERS  
DIAMOND  
MERCHANTS  
STERLING  
JEWELERS

DELAYED GREEN  
ONE WAY

AMERICAN SOUTHWEST Bank

STYVENS

ALTERATION



Downtown Anniston  
Historic District

(Photo #55)

East side 1000 Block Noble St  
ANNISTON, AL (CALHOUN CO.)

(ROLL # 2-13)



Downtown Anniston (Photo #56)  
HISTORIC DISTRICT

NORTH side O Block E. 11th St.

21-23, 27; 29 E. 11th St.

ANNISTON, AL (CALHOUN CO.)

(Roll #2-11)



Downtown Anniston  
Historic District

(Photo #57)

11-19, 21-23 E. 11th St.  
Anniston, AL (Calhoun Co.)

(Roll #2-12)



S

four brothers  
family apparel

ON TIME

FASHIONS



ESTABLISHED 1880  
W. H. BROWN & SONS  
CLOTHING

Downtown Anniston. (ROLL # 58)

HISTORIC DISTRICT

EAST side 1100 Block Noble St

ANNISTON, AL (CALHOUN CO.)

(ROLL # 2-16)





S

four brothers  
family apparel

ON TIME

FASHIONS



Downtown Anniston  
Historic District

(Photo # 59)

1105, 1101 Noble St.

ANNISTON, AL (CALHOUN CO.)

(Roll # 3-22A)

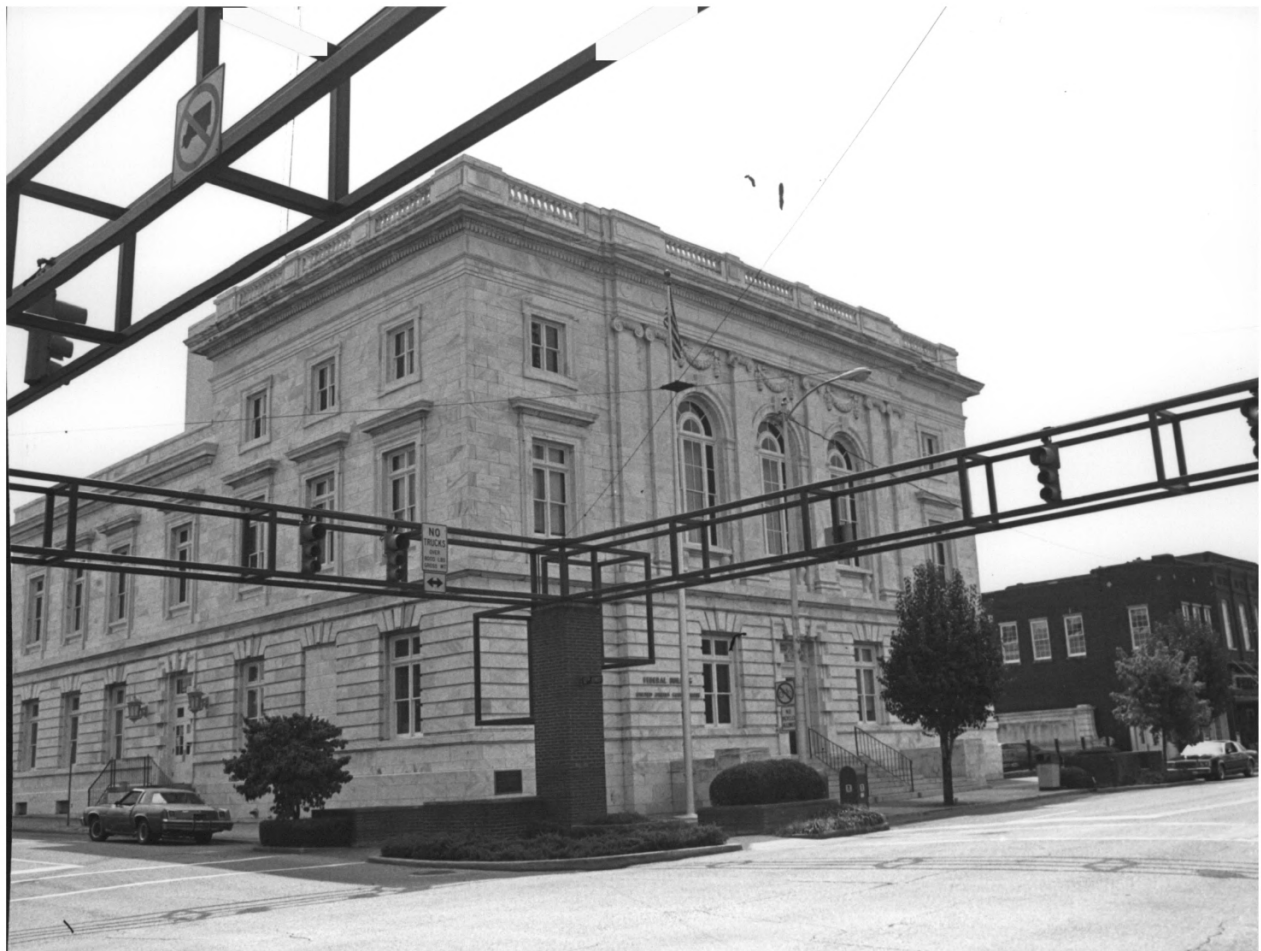


Downtown Anniston  
Historic District

(Photo # 60)

1125, 1123, 1119-1121; 1117 Noble  
Anniston, AL (CALHOUN CO.)

(ROLL # 3-20A)



NO TRUCKS  
OVER  
HEIGHT  
LIMITS  
OR  
WEIGHT  
LIMITS

FEDERAL BLDG  
PROPERTY OF U.S. GOVERNMENT

Downtown Anniston  
Historic District

(Photo #61)

Old U.S. Post office, 1129 Noble St.

ANNISTON, AL (CALHOUN CO.)

(Roll #5-9)



Downtown Anniston  
Historic District

(Photo #62)

South Side O Block E. 12<sup>th</sup> St.  
24, 22, 20 E. 12<sup>th</sup> St.

ANNISTON, AL (CALHOUN CO.)

(Roll # 2-8)





Downtown Anniston  
Historic District

(PHOTO # 63) :

South Side O Block E. 12th St.

also showing rear of old P.O.

ANNISTON, AL (CALHOUN CO.)



Downtown Anniston (Photo #64)  
HISTORIC DISTRICT

1131 Wilmer Ave  
ANNISTON, AL (CALHOUN CO)

(Roll #2-9)



Downtown Anniston  
Historic District

(Photo # 65)

East side 1200 Block Noble St  
ANNISTON, AL (CALHOUN CO.)

(Roll # 2-10)



DOWNTOWN ANNISTON HISTORIC DISTRICT (PHOTO #66)  
East side 1200 Block Noble St  
ANNISTON, AL (CALHOUN CO.)

(ROLL # 3-13A)





GREWOLD DANELL ARTISTS GALLERY

Downtown

Anniston (Photo #67)

HISTORIC DISTRICT

1211 Noble St.

ANNISTON, AL (CALHOUN CO.)

(Roll # 3-14A)



NO TRUCKS  
OVER 10000 LBS  
EXCEPT ON MONDAY  
← →

SHERWIN  
Williams

ACCESSORIES

NO  
RIGHT  
TURN

Downtown Anniston  
Historic District

(Photo #68)

East side 1200 Block Noble St  
Anniston, AL (Calhoun Co.)



Downtown Anniston  
Historic District

(Photo #69)

Manhattan Hotel - Heart of Anniston  
INN, Annex, 1301 Noble St.  
ANNISTON, AL (CALHOUN CO.)

(RAL # 3-7A)



VOTE REPUBLICAN

LEGS FOR FREE  
SHIRTS FOR FREE  
SHIRTS FOR FREE

The Country Restaurant

The Country Restaurant

The Country Restaurant

Downtown Anniston  
Historic District

(Photo #70)

Hotel Annex, 1301 Noble St  
ANNISTON, AL (LALHOUN CO.)

(roll #5-14)





Downtown Anniston  
Historic District

(Photo #71)

Telephone Building

1325 Noble St.

ANNISTON, AL (CALHOUN CO.)

(Roll #3-3A)



Anniston - 90  
Historic District (PHOTO # 72)

FRONT of Telephone Bldg.  
1325 Noble St.  
ANNISTON, AL (LALHOUN CO.)

(ROLL # 3-5A)