

United States Department of the Interior  
National Park Service

559



National Register of Historic Places  
Registration Form

This form is for use in nominating or requesting determinations for individual properties and districts. See instructions in How to Complete the National Register of Historic Places Registration Form (National Register Bulletin 16A). Complete each item by marking "x" in the appropriate box or by entering the information requested. If any item does not apply to the property being documented, enter "N/A" for "not applicable." For functions, architectural classification, materials, and areas of significance, enter only categories and subcategories from the instructions. Place additional entries and narrative items on continuation sheets (NPS Form 10-900a). Use a typewriter, word processor, or computer, to complete all items.

1. Name of Property

historic name EAST BRIDGEWATER COMMON HISTORIC DISTRICT

other names/site number \_\_\_\_\_

2. Location

street & number Central, Plymouth Sts., Morse Ave. around Common not for publication

city or town East Bridgewater vicinity

state Massachusetts code MA county Plymouth code 023 zip code 02333

3. State/Federal Agency Certification

As the designated authority under the National Historic Preservation Act of 1986, as amended, I hereby certify that this  nomination  request for determination of eligibility meets the documentation standards for registering properties in the National Register of Historic Places and meets the procedural and professional requirements set forth in 36 CFR Part 60. In my opinion, the property  meets  does not meet the National Register Criteria. I recommend that this property be considered significant  nationally  statewide  locally. ( See continuation sheet for additional comments.)

*Judith B. McDonough*

Signature of certifying official/Title Judith B. McDonough, Executive Director  
Massachusetts Historical Commission, State Historic Preservation Officer

Date

State or Federal agency and bureau

In my opinion, the property  meets  does not meet the National Register criteria. ( See continuation sheet for additional Comments.)

Signature of certifying official/Title

Date

State or Federal agency and bureau

4. National Park Service Certification

- I, hereby certify that this property is:  
 entered in the National Register  
 See continuation sheet.
- determined eligible for the National Register  
 See continuation sheet.
- determined not eligible for the National Register
- removed from the National Register
- other (explain): \_\_\_\_\_

Signature of the Keeper

*Edson H. Beal*

Date of Action

5/12/99

East Bridgewater Common HD  
Name of Property

Plymouth, MA  
County and State

**5. Classification**

**Ownership of Property**

(Check as many boxes as apply)

- private
- public-local
- public-State
- public-Federal

(Check only one box)

- building(s)
- district
- site
- structure
- object

**Number of Resources within Property**

(Do not include previously listed resources in the count.)

Contributing	Noncontributing	
38	18	building
4		sites
1	1	structures
4	3	objects
47	22	Total

**Name of related multiple property listing**

(Enter "N/A" if property is not part of a multiple property listing.)

**Number of contributing resources previously listed in the National Register**

0

**6. Function or Use**

**Historic Functions**

(Enter categories from instructions)

DOMESTIC/single dwelling

FUNERARY/cemetery

LANDSCAPE/plaza

RECREATION and CULTURE/monument

RELIGION/religious facility

**Current Functions**

(Enter categories from instructions)

DOMESTIC/single dwelling

GOVERNMENT/town hall

FUNERARY/cemetery

LANDSCAPE/plaza

RECREATION AND CULTURE/monument

RELIGION/religious facility

**7. Description**

**Architectural Classification**

(Enter categories from instructions)

COLONIAL/Georgian EARLY REPUBLIC/Federal

MID 19<sup>th</sup> CENTURY/Greek Revival

LATE VICTORIAN/ Italianate, Stick

**Materials**

(Enter categories from instructions)

foundation stone

walls wood

roof asphalt

other

**Narrative Description**

(Describe the historic and current condition of the property on one or more continuation sheets.)

United States Department of the Interior  
National Park ServiceNational Register of Historic Places  
Continuation SheetEast Bridgewater Common Historic District  
East Bridgewater (Plymouth County)  
MassachusettsSection number 7 Page 1**7. DESCRIPTION**

The East Bridgewater Common Historic District is a district of religious, civic, and residential buildings which surround the historic Town Common in the easterly part of East Bridgewater. The 1.7 acre, triangular-shaped Town Common lies at the district's center, bounded by Central Street at its wide northern side, by Plymouth Street to its southwest, and Morse Avenue to its southeast. The district is located a block eastward of the town's nineteenth century commercial center at Bedford and Central Streets, and strongly retains its historic scale and streetscape continuity. The district contains approximately 69 acres and represents the town's early development around its public common, muster field and first meetinghouse/church. Its focal point is the First Parish Church, centered directly north of the Common, whose large scale and tall spire are visible from all parts of the district. The predominance of two-story massing, similar clapboard and shingle surfaces, and of Federal and Greek Revival detailing on many of the nineteenth century homes visually unifies the district. The placement of homes on open lots with moderate setbacks creates a pleasing rhythmic pattern. Mature landscaping and well-maintained grounds add to the district's character. The individual resources date from 1703 to 1989 when a series of six Colonial-style townhouses were built in a cluster on a portion of the historic muster field east of the Common. The district would become the first National Register district in the town of East Bridgewater.

The district contains a total of 69 resources, of which 47 are contributing and 22 are non-contributing. There are 38 contributing buildings, 4 contributing objects, 4 contributing sites, and 1 contributing structure. Of the non-contributing resources, 18 are buildings, 3 are objects, and 1 is a structure. The non-contributing buildings include the High School which is set back from the street at the Common's southwest edge, St. John's Church and a cluster of six townhouses which are all of a moderately-compatible Colonial Revival style. The newer house at #33 Morse Avenue is also compatible in its small scale and Cape design, while #310-312 Central Street is more intrusive in its prominent siting and Garrison-Colonial style. The properties are mostly in good to excellent condition and have been well-maintained. Several retain large barns to the rear of the main house. Original design character and historic building fabric are largely intact.

The district lies on an elongated glacial formation historically known as "The Plain." This broad, level plain runs the full length of the district from west to east, but drops off just south of the Common and along the southern boundary of the district so that Plymouth Street, Strong Avenue and Speare Avenue all run downhill as they leave the district. To the west, the plain abuts a sloping hill that runs north-south through the commercial district. The plain also drops off at the district's northern edge, where the cemetery properties slope downward to a small stream. The varied terrain and winding paths add to the variety and visual interest of the Central Cemetery's landscape design. The plain extends eastward beyond the district into further outlying areas.

The district's physical character is determined by the street pattern which wraps around the central Common. Central Street runs east-west through the center of the district and since the seventeenth century has served as a main route from one side of town to the other. The clustering of homes, churches, and graveyards along the edge of a main road such as this was a common development pattern

(continued)

United States Department of the Interior  
National Park ServiceNational Register of Historic Places  
Continuation SheetEast Bridgewater Common Historic District  
East Bridgewater (Plymouth County)  
MassachusettsSection number 7 Page 2

in New England towns. Plymouth Street, which slopes southward, defined the Common's edge. This edge of the Common was soon lined with homes built by prominent citizens whose farmlands were in this area or who were involved in civic and religious affairs. Until the 1950s, the Common was considerably larger than at present, extending further eastward along Central Street to also include a muster field. Its larger size would have further emphasized its historic importance as a public gathering place and militia training field, now somewhat lessened by the creation of Morse Avenue and the newer buildings to its east.

The **Town Common's** modest landscape design derives from its early days as a common pasturage (**MAP #26, MHC #909, Photograph #1,2**). It features a large expanse of grass, several new brick-paved paths, one mature tree near its center, and smaller deciduous trees more recently planted along the perimeter. An 1820s planting plan by Williams Latham consisted of forty trees planted in two rows along the Common's outer edges, but is no longer evident. A fence of square granite posts and iron rails surrounds the Common, with new wooden park benches interspersed along its length. The Common's focal point is the 1874 Civil War Monument at its center, a 33-foot tall granite obelisk engraved with the names of the 47 townsmen who lost their lives in the Civil War. A flagpole, wooden gazebo, and War Memorial have been more recently situated in the westerly portion of the Common.

The district's streets are lined by narrow sidewalks, with the homes set back 20-30 feet from the street. The lots are generally rectangular, narrow at the street end but extending back up to 150 feet to form deep rear yards. Most of the homes have grass lawns and mature foundation plantings which add to the gracious, settled-in feeling of the district. A row of large trees close to the sidewalk in the easterly section creates a shady tree-lined street effect. There are also two very large trees in the foreground of the Hobart Estate. Several properties include garages, free-standing or attached barns set back behind the houses. The garages are generally of complimentary designs and modest in size. The barns strengthen the historic context of the homes as reminders of their agrarian past. Particularly fine examples are those of the Levi Churchill House, the Clarence Chandler House, and the Dr. Daniel Chaplin House.

A system of **old granite walls (MAP #2)** runs through the district to serve as retaining walls for the cemeteries and several of the homes. These walls date from the eighteenth to late-nineteenth centuries and are another unifying feature of the district. The earliest-known walls surrounded the Old Graveyard but were rebuilt in 1822 and 1887 for the widening of Central Street. The south wall is built of mortared fieldstone with a granite cap and is 333 feet long and 2-3 feet high. The east wall appears to be older and is of small flat stones with a cut granite cap on the south part, and of drywall construction in the north portion. There is an indentation in this wall where the hearse house once stood. The entrance roadway into the Central Cemetery has a granite block wall along its west edge, while the cemetery's Church Street edge has a more formal wall of Quincy granite, evenly cut and set, and 266 feet in length. Other walls were built by property owners for esthetic effect or as retaining walls on sloping sites. These include the 1854 random granite wall which lines Central Street in front of the Aaron Hobart Estate/Town Offices, and the 1-2 foot high fieldstone and granite walls in front of the Major Seth Johnson House and the Chamberlain/Millet/Bartlett House.

The district's oldest property is the **Old Graveyard** at 140-180 Central Street (**MAP #29, MHC #810; Photograph #5**). A cemetery was established here by 1703 and enlarged by 1759, with the northeast  
(continued)

United States Department of the Interior  
National Park ServiceNational Register of Historic Places  
Continuation SheetEast Bridgewater Common Historic District  
East Bridgewater (Plymouth County)  
MassachusettsSection number 7 Page 3

corner designated as the Pauper's Corner. It is raised three feet above grade by a fieldstone and granite wall on the south and east sides, and is a level, rectangular site. A few large trees give it a wooded appearance. The markers are set closely together in fairly regular rows and consist mainly of flat granite headstones with round-arched tops.

The **Lewis Keith House** (MAP #22; MHC #80; Photograph #8) may be the district's earliest surviving building. Located at 274 Central Street, it may date from as early as 1738, although it was altered ca. 1835. The basic design is Georgian, a simple two-story, five-bay, center entrance house, set very close to the street. It is faced in weathered wooden shingles. The entrance porch appears to be of Greek Revival design, ca. 1835. It consists of a pitched roof supported on a tall architrave which rests on two fluted Doric columns.

Another of the oldest buildings is the **Noyes/Kingman House** at 329 Central Street (MAP #9; MHC #9; Photograph #10). Built ca. 1790, it is a five-bay, center-entrance Georgian design, two stories high. The ridge roof is capped by a massive central chimney. The building is faced in clapboards and has six-over-six lights. The entrance has simple pilasters and a rectangular architrave molding with a projecting upper edge. There are two rear ells in the west portion, one of two stories and one of one story, and a small ell in the east portion as well. The two-story west portion was reportedly added from parts of the old (Second) First Parish Church when it was demolished in 1795.

The **First Parish Church** at 234 Central Street dates from 1794, was remodeled in the 1850s, and expanded with a Parish House addition (MAP #24; MHC #1; Photograph #1,2). The original design had its main entrance centered on the Church Street (east) elevation, with a square projecting clocktower at the south end. (Although it has been written that the church was moved a quarter turn on the site, it appears that perhaps only the entrance was moved and that the gabled entrance wing was added in front of the clocktower.) The present design faces southward onto the Common and is a 2 1/2 story structure with a three-bay, two-story entrance wing capped by a broad gable. From its roof rises a tall square three-tiered steeple with clock faces on three sides, capped by a tall spire (rebuilt after the 1938 hurricane). The main mass of the building is a larger gable-ended, two-story block, four bays deep. From its northwest (rear) corner, a lower two-story link connects to a five-bay deep, two-story Parish House addition of Italianate design, whose long side elevation and ridge roof face southward. The west elevation has a tall gable end with cornice returns.

The 1824 **Dr. Samuel Orr House** at 210 Central Street stands directly west of the First Parish Church (MAP #27; MHC #69; Photograph #3). It is a two-story Federal design, five bays wide and three bays deep with a hipped roof and two chimneys. A one-story partially-enclosed porch (added ca. 1910) wraps around the south and west elevations. The building is faced in clapboards and retains two-over-two sash from a late-nineteenth century remodeling. At the northeast corner is an attached barn now used as a storage room and garage.

At 33 Plymouth Street, directly across from the Common, stands the **Joseph Chamberlain/Samuel Green Alden House** of 1826 (MAP #4; MHC #96; Photograph #6). Faced in clapboards, it is a full  
(continued)

United States Department of the Interior  
National Park ServiceNational Register of Historic Places  
Continuation SheetEast Bridgewater Common Historic District  
East Bridgewater (Plymouth County)  
MassachusettsSection number 7 Page 4

Cape of five-bay width with a central hall plan. The Federal design is highlighted by its center entrance which features a delicate elliptical fanlight and sidelights. For most of its life, it served as a farmhouse, with several ells added to the rear at various times during the nineteenth century.

The **Levi Churchill House** of 1829 at 298 Central Street is a fine example of a transitional Federal/Greek Revival home (MAP #19:MHC #22; Photograph #9). The massing as a two-story, ridge roof block with a five-bay, center entrance design is typical of the Federal period. The clapboard front with brick ends is the only example of its type in the district. Cornice returns and a pedimented entry porch reflect Greek Revival tastes. Later two-story wooden ells extend to the north and northeast, connecting to the large two-story barn (now a garage) with its gable end facing southward towards the street.

Three properties of very different types were all built in the year 1854. The **First Parish Parsonage** at 346 Central Street is a Greek Revival design (MAP #15: MHC #132). It has a three-bay gable end facing the street, 2 1/2 stories high with corner pilasters and end returns at the projecting cornice. Across the first floor is a hipped porch supported by four columns. The house is four bays deep and has a wide entablature beneath the projecting roofline. Windows feature six-over-six sash and shallow hood moldings. To the rear of the main mass, the former barn was turned 90° and attached as a rear ell.

The **Millet/Bailey/Spear House**, also of 1854, is an Italianate design (MAP #8). Located at 311 Central Street, it is a gracious farmhouse in a cross-shaped plan, with large brackets at the gabled roofline. A narrow gabled end faces the street and has a large bay window in its first floor, with four round-arched windows and a decorative architrave molding. The east and west elevations have projecting gabled wings in their center, also with large bay windows in the first story, and with matching one-story porches to their north. These three-bay porches are supported on fluted rectangular posts with Italianate bracketed heads with teardrop designs. The west entrance has full sidelites.

The original portion of the **Aaron Hobart Estate/Town Offices** was also built in 1854 and was designed in the Italianate style (MAP #3; MHC #74; Photograph #13). Here, the style is taken to its full potential in a grandiose design for one of the town's leading citizens. The house sits back 150 feet from the street on an open parcel previously owned by the Allen family, descendants of Samuel Allen, an original settler of the town. The property contained over 43 acres of farmland when acquired by the Town in the 1950s. The Hobart Estate, as originally designed, is a large two-story home, three bays wide and two bays deep, with a projecting center pavilion with a gabled peak. Corner pilasters, two tall chimneys, and deep overhanging cornices with pairs of large brackets enrich the design. Windows have large tabbed hoods, and there are two bay windows at the first story of the west elevation. An elaborate Victorian paint scheme was introduced when the large addition was built in the 1980s. A new 1 1/2 story entrance wing extends westward from the rear end of the original building. It has a large centered entry beneath a very large gabled portico and connects the older structure to a larger two-story mass to the west which echoes the size, scale, and massing of the original. The new addition repeats the detailing of the original, including the deep bracketed cornice, center gabled pavilion and projecting bays. Although the addition to some degree overwhelms the original design in size, it carries on the original's grand scale and fanciful spirit.

(continued)

United States Department of the Interior  
National Park ServiceNational Register of Historic Places  
Continuation SheetEast Bridgewater Common Historic District  
East Bridgewater (Plymouth County)  
MassachusettsSection number 7 Page 5

Several properties dating from the late nineteenth century line Central Street near the district's east end. The **Herman Morse House** at 334 Central Street of ca. 1875 features the district's only Stick Style design (MAP #17). It is a two and one-half story home, with a large gabled end facing the street and an intersecting gable of equal size facing eastward. The gables have large overhangs, with exposed rafters on the front one and small diagonal braces on the east one. Each has a large diagonal truss design in the peak of the gable. The main facade is one-bay wide, with paired 1/1 windows in the first story, a pair of 1/1 windows with triangular transoms and diagonal-headed shutters at the second story, and a squat third-story window with a peaked head. The entry bay is located in the south-facing end of the east gable. Its shed roof porch is supported by turned columns, large brackets and diagonal bracing.

The **Morse/Thomas House** at 339 Central Street has detailing characteristic of the Eastlake Style in its front porches and cornice brackets (MAP #10). The basic massing is a three-bay, 2 1/2 story block with narrow recessed wings to the east and rear. The facade has an entry in the west bay which features a shed roof hood resting on turned posts. It has a balustraded cornice supported by decorative brackets with a pierced-circle motif. The east porch between the facade and east wing is two bays deep and has a similarly-detailed balustraded cornice and pierced-circle brackets. These brackets also appear at the eaves at each corner of the roof. The building is now sheathed in aluminum but it does not affect the detailing.

Two properties in the district date from the early twentieth century and were built in the Bungalow style. The **Bradford Alexander House** at 301 Central Street (MAP #7) dates from 1924. It was built on farmland purchased in 1923 from George Webber, whose own house stands across the street. It is a small, five-bay, center-entrance design, 1 1/2 stories high. A screened porch runs the facade's full width. Its design features a wide cornice and exposed braces along its length. The steep roof has a large centered dormer with a gabled peak and exposed bracing. To the south, rear eaves of one and one-half story height in the west portion and one-story height in the east portion continue the modest detailing of the main mass.

The **George Simpson House** of 1910, at 367 Central Street, (MAP #13) is also a Bungalow design. The front roof sweeps down over a large open porch which was later enclosed. Exposed rafters are visible all along its length. Small colonnetted columns rest on brick piers on each side of the center entry and also at the two ends of the facade. Centered in the roof is a shed roof dormer with two one-over-one windows.

There are no known architects of record for the district's early historic buildings. Walter T. Winslow was responsible for the Edwardian decor added in the 1884 renovations to the First Parish Church. The house designs were often developed by local housewrights, based on other homes they or the owner had seen elsewhere in the region. The design detailing is typically of fine quality and indicates a care and concern for good craftsmanship characteristic of the period. Of exceptional quality is the Federal doorway design of the Joseph Chamberlain/Samuel Green Alden House. The Clarence Chandler House is particularly noteworthy for its fine carved wood detail and handsome adjoining barn, entirely preserved.

The district's contributing resources date from 1721 through 1924. Its noncontributing resources are of  
(continued)

United States Department of the Interior  
National Park ServiceNational Register of Historic Places  
Continuation SheetEast Bridgewater Common Historic District  
East Bridgewater (Plymouth County)  
MassachusettsSection number 7 Page 6

more recent date but for the most part are not extremely intrusive. The **East Bridgewater High School (MAP #A)** is a large, contemporary school facility built in a Colonial Revival motif. It is set back from the Common's southwest edge and is built into the receding hillside to lessen its impact. The **Richard Bartlett House (MAP #B)** is a Cape-style home of 1954. It faces the Common from Morse Avenue and is compatible in scale, massing, and materials with the district's overall character. The six **townhouses (MAP #C-H)** are grouped in two clusters and set back further from the street than adjacent properties. Their Colonial Revival designs repeat the massing and roofline forms of nearby properties, although they are clearly larger and without the intrinsic charm of their older neighbors. The **two-unit condominium** at 210-212 Central Street (**MAP #I**) is also intrusive in its placement close to the street and in its Garrison Colonial design. **St. John's Church (MAP #J)** is a large, red brick Colonial Revival design which replaced an historic 1894 church on the site when it burned in 1954. Its scale and proportions are pleasing and it does not intrude upon adjacent historic properties. Other noncontributing resources are limited to small sheds and garages set back from the street and minimally noticeable.

Recent alterations to private residences within the district have been quite limited. The First Parish Church has been clad in vinyl siding, but a preservation restriction will help to protect it from major changes in the future. The Town has made efforts to restore the Town Common's historic appearance and to maintain it nicely. In general the homes are well-maintained and the overall integrity of the district is intact and well-preserved.

**Archaeological Description**

While no prehistoric sites are currently recorded in the district, sites may be present. Seven prehistoric sites are recorded in the general area (within one mile) of the East Bridgewater Common Historic District. All of the sites are located along terraces bordering the Satucket River. The physical environment of the district includes several locational criteria (slope, drainage, distance to wetlands) that are favorable for many types of prehistoric sites. Much of the district includes well-drained level to moderately sloping terraced locales in close proximity (within 1000 feet) to wetlands associated with the Satucket and Matfield Rivers. These rivers are part of the larger Taunton River drainage that flows southerly to Mount Hope and Narragansett Bays. An unbroken sequence of Native American settlement has been documented in this area dating from the Paleoindian Period (12,000 B.P.) to the present. An east/west Native trail route also became the basis for the present course of Central Street. It has been reported that portions of the old Native trail can still be found behind several of the homes north of Central Street, however, this fact has yet to be documented with physical evidence. Historic development has probably impacted some potential prehistoric resources that may be present in the district. The overall size of the district (69 acres), the availability of open land at the Common and as a result of residential clustering along main roads on deep lots creating open spaces to the rear of homes indicates a high potential for archaeological resources to survive with integrity. Given the above information, the potential for recovering significant prehistoric survivals in the district is high.

There is also a high potential for the recovery of historic archaeological resources in the district. Additional documentary research combined with archaeological survey and testing can help locate the

(continued)

United States Department of the Interior  
National Park ServiceNational Register of Historic Places  
Continuation SheetEast Bridgewater Common Historic District  
East Bridgewater (Plymouth County)  
MassachusettsSection number 7 Page 7

sites and condition of 17<sup>th</sup> through 19<sup>th</sup> century residential, civic and religious structures in the district. Structural evidence may survive from many of the district's earliest homes that were moved to other parts of town and replaced by larger structures. Historical and archaeological research can identify potential sites of structural remains associated with the town's 17<sup>th</sup> century settlement that was characteristically scattered through the town during the period. Archaeological sites may be present in the district from this period although not especially common. Central Street, which extends east/west through the center of the district, has served as the main route for travel from one side of the town to the other since the 17<sup>th</sup> Century. Sites of early farmsteads and residences, if they exist, may be located along this corridor. Portions of the Francis Davis Millet Studio was reportedly constructed from the ca. 1682 Hayward House whose original site is unknown. Five settlers are reported in the area before King Philips War when in 1676 every structure was burned by Native Americans except the home of Nicholas Byram. Comparatively few 18<sup>th</sup> century structures have also been identified in the district indicating many of these buildings may have also been moved or otherwise lost. Potential archaeological sites from this period may be more common than sites of the preceding or subsequent periods. Eighteenth Century farmsteads/residential sites should also be concentrated along the Central Street corridor, however, outlying areas along Plymouth Street, Church Street, and other locales were also probably settled. Archaeological evidence of the Reverend James Angier House, probably built during the 18<sup>th</sup> century, may be present in the vicinity of the Chamberlain/Millet/Bartlett House at 48 Plymouth Street. Structural evidence from sites of 18<sup>th</sup> century civic and religious structures may also survive in the district. Archaeological evidence from the First Meetinghouse (1724) may survive in the vicinity of the extant Third Meetinghouse (1794) later renamed the First Parish Church, which was reportedly built on the same site. Structural evidence may also survive from the Second Meetinghouse (1754), built directly east of the First Meetinghouse site. Portions of the Second Meetinghouse were reportedly incorporated into the Noyes/Kingman House (ca. 1790) located at 329 Central Street. Structural and other soil feature evidence may also survive from entrance changes and/or changes in building orientation which may have occurred to the First Parish Church when it was remodeled in the 1850's. Archaeological survivals may also exist from the first Saint John's Church (1894) destroyed by fire in 1954 and replaced by the present structure in 1955. Structural evidence may also survive from two 18<sup>th</sup> century schools originally built in the district. The town's first school (ca. 1723) was originally located at one edge of the Town Common. That school was replaced by a second school (1798) originally located on Plymouth Street, facing the common roughly where the present high school entrance driveway is located. A third school site may be present in the district from a school (1846) which stood at the eastern edge of the cemetery behind the church. That school was relocated to Northville. Archaeological evidence of the Allen School, which burned in 1946, may also be present in the district since its site was acquired for cemetery expansion. Structural evidence of the original Town Hall, built in the mid 19<sup>th</sup> century, may also exist in the area between Dr. Samuel Orr's house and the old graveyard. The original Town Hall was demolished in the 1950's. Although 19<sup>th</sup> century residences characterize the district today, structural evidence from residences dating to this period may also survive in the district though few have been identified. Archaeological evidence may survive from several "open air shacks" originally located in the rear yard of Dr. Charles Millet's "fresh air" sanitorium located on the property of the Chamberlain/Millet/Bartlett House at 48 Plymouth Street. Structural remains from outbuildings (barns, sheds) may also survive with most residential, civic and religious structures extant and those that no longer survive. Evidence of occupational related features (trash pits/areas, privies, wells) should also be present in similar areas.

(continued)

**United States Department of the Interior  
National Park Service**

**National Register of Historic Places  
Continuation Sheet**

East Bridgewater Common Historic District  
East Bridgewater (Plymouth County)  
Massachusetts

Section number 7 Page 8

---

Isolated artifact finds and artifact scatters or sheet refuse patterns may exist in the Town Common area dating to the 18<sup>th</sup> through 20<sup>th</sup> centuries. Town Common land was first deeded to the town in 1721 then increased in size in 1724, 1749, 1762 and 1796 until the 1950's when it began to diminish to it's present size. The Common originally included a muster field and was the site of significant town events during the Colonial and Federal Periods. The remaining Town Common area (approximately 1.7 acres) located at the center of the district may contain artifacts related to these activities. Archaeological survivals should also be present in the district associated with the Old Graveyard (ca.1703) and the Central Cemetery (1845). Post molds indicating the locations of old fence lines, outbuildings associated with cemetery maintenance, builders trenches for stone cemetery retaining walls, and unmarked graves may be present associated with both cemeteries. Structural evidence of a Hearse House is reportedly still visible along the east wall of the Old Graveyard. At both cemeteries, osteological and artifact evidence should survive associated with individual and groups of graves.

(end)

East Bridgewater Common HD

Name of Property

Plymouth, MA

County and State

**8. Statement of Significance**

**Applicable National Register Criteria**

(Mark "x" in one or more boxes for the criteria qualifying the property for National Register listing.)

- A** Property is associated with events that have made a significant contribution to the broad patterns of our history.
- B** Property is associated with the lives of persons significant in our past.
- C** Property embodies the distinctive characteristics of a type, period, or method of construction or represents the work of a master, or possesses high artistic values, or represents a significant and distinguishable entity whose components lack individual distinction.
- D** Property has yielded, or is likely to yield, information important in prehistory or history.

**Criteria Considerations**

(Mark "x" in all the boxes that apply.)

Property is:

- A** owned by religious institution or used for religious purposes.
- B** removed from its original location.
- C** a birthplace or grave.
- D** a cemetery.
- E** a reconstructed building, object, or structure.
- F** a commemorative property.
- G** less than 50 years of age or achieved significance within the past 50 years.

**Narrative Statement of Significance**

(Explain the significance of the property on one or more continuation sheets.)

**9. Major Bibliographical References**

(Cite the books, articles, and other sources used in preparing this form on one or more continuation sheets.)

**Previous documentation on file (NPS):**

- preliminary determination of individual listing (36 CFR 67) has been requested
- previously listed in the National Register
- previously determined eligible by the National Register
- designated a National Historic Landmark
- recorded by Historic American Buildings Survey # \_\_\_\_\_
- recorded by Historic American Engineering Record # \_\_\_\_\_

**Primary location of additional data:**

- State Historic Preservation Office
- Other State agency
- Federal agency
- Local government
- University
- Other

Name of repository:

E. Bridgewater Historical Commission

**Areas of Significance**

(Enter categories from instructions)

ARCHITECTURE

COMMUNITY PLANNING AND DEVELOPMENT

RELIGION

**Period of Significance**

1703-1949

**Significant Dates**

1703, 1723, 1794, 1854

**Significant Person**

(Complete if Criterion B is marked above)

n/a

**Cultural Affiliation**

N/a

**Architect/Builder**

N/a

United States Department of the Interior  
National Park ServiceNational Register of Historic Places  
Continuation SheetEast Bridgewater Common Historic District  
East Bridgewater (Plymouth County)  
MassachusettsSection number 8 Page 1**8. SIGNIFICANCE**

The East Bridgewater Common Historic District, East Bridgewater retains its integrity of location, design, setting, materials, workmanship, feeling, and association, and it fulfills Criteria A and C of the National Register on the local level.

Under Criterion A, the East Bridgewater Common Historic District is significant for its role in the early settlement of East Bridgewater, dating from the 1680s, and for its further development as the civic and religious center of the village during the eighteenth and nineteenth centuries. Its design reflects how the Town Common evolved from its original purpose as a public pasturage and musterfield into a key landscape feature and public park component of the district. The patterns of residential, religious, and civic building development around the Common illustrate the continued desire to create a strong sense of community, both physically and psychologically, since many of the town's earliest homesites were scattered far apart at the locations of various early mills along the town's Satucket and Matfield Rivers. Fine homes, churches, schools, and meetinghouse/town halls were built along the Common's outer edges, a pattern, which continued, well into the late nineteenth century. This confirmed the area's central role in the community. The district reflects the success of its early occupants, mainly farmers, ministers, and established descendants of the town's early settlers. They built their homes to reflect the latest architectural fashions and tastes of the times; homes with strong massing, graceful proportions, and fine detailing that continue to command admiration today.

Under Criterion C, the district is East Bridgewater's only example of a late-eighteenth to mid-nineteenth century village centered around a Common and its largest and most cohesive grouping of fine homes, churches and cemeteries. The homes are important individually as fine examples of the Georgian, Federal, Greek Revival, and Italianate styles. They are generally more restrained than exuberant, showing the simple, modest success of their owners. Collectively, the properties form a harmonious, well-defined grouping by means of their consistent size and massing, and their use of similar setbacks and modest informal landscape treatments. The district's period of significance spans from 1703 to 1948. These dates commence with the first establishment of a burial ground at the Old Graveyard property and extend up to the fifty-year cut off for National Register qualification. Throughout its existence, the district has served as the focal point for the town's civic and religious activities.

Criterion A: The gradual development of the East Bridgewater Common Historic District has its roots in the town's earliest settlement. On March 23, 1649, Wampanoag Chief Massasoit deeded to Captain Myles Standish, Samuel Nash, and Constant Southworth, commissioners appointed by the Colonial Government at Plymouth, a tract of land over-ridden with wolves which included what has since become the Bridgewaters and parts of Abington and Hanson, Massachusetts. Taking place at Sachem's Rock on a small hill east of the Satucket River called Wonnocooto, (less than a half-mile south of the district), the purchase by the Pilgrims involved a price of less than \$30: 7 coats, 9 hatchets, 8 hats, 20 knives, 4 moose skins, 10 1/2 yards of cotton, and 1 1/2 yards in a coat. Settlement within the present boundaries of East Bridgewater began in 1660 when Samuel Allen of Braintree built a home near the Matfield River, followed by Nicholas Byram, William Brett, Jr., Robert Latham, and Thomas Whitman. These five early settlers were the only inhabitants before King Philip's War, when in 1676, the Native Americans burned every dwelling save that of Byram. However, none of the residents were killed.

Over the next twenty-five years, settlers began to establish farmsteads, grist mills, saw mills, and forge sites in the vicinity. Homesites adjacent to area streams offered potential mill power, food and transportation. In 1700, the East Bridgewater settlement numbered approximately 100 families scattered throughout the area. An early east-west native trail route became the basis for Central Street, connecting various settlement nodes within the town. As early as 1703, a burial ground existed on a portion of the Old Graveyard (MAP #29), on land given by Deacon Samuel Allen. It was enlarged in 1759 with a grant by Matthew Allen, Jr. and contained a Pauper's Corner in the northeast section. A Hearse House was built into the east wall, where evidence of its location is still apparent. Many of the town's early settlers were buried here, including Reverend John Angier, first minister, Reverend

(continued)

United States Department of the Interior  
National Park ServiceNational Register of Historic Places  
Continuation SheetEast Bridgewater Common Historic District  
East Bridgewater (Plymouth County)  
MassachusettsSection number 8 Page 2

Samuel Angier, second minister, Isaac Otis, first doctor, Josiah Otis, a doctor, Captain Jonathan Pass, and Deacon Thomas Whitman.

In 1721, land for a Town Common, on which would be built a Meetinghouse, was first deeded by Samuel Allen, Jr., son of the earliest settler. The first meetinghouse was completed in 1724 on a portion of the site of the present First Parish Church (MAP #24). The first school was built ca. 1723 at one edge of the new Common. The Common continued to grow in size with additional grants from farmers whose lands abutted it and whose own advantage in having a common pasturage was probable. Subsequent sections were deeded to the Parish by Nehemiah Allen in 1724, by Matthew Allen, Jr., and Seth Allen in 1749 for a Training Field, and again by Matthew Allen, Jr., and by Nathan and Betty Whitman in 1762 and by Ezra Whitman in 1796, until reaching the size which it remained until the 1950s.

The East Parish of Bridgewater was formed by the General Court on December 14, 1723, from the end of the North Parish of Bridgewater, which at the time included West and old North Bridgewater. The East Parish did not become an independent town until June 14, 1823, when it was incorporated as a town.

The First Meetinghouse was replaced in 1754 by a larger building directly to its east. This Second Meetinghouse also served the joint functions of meetinghouse and church. Agriculture remained an important facet of the East Parish economy, particularly along "The Plain," but industrial operations such as Experience Mitchell's c. 1700 tannery at Elmwood, John Bass's c. 1726 iron forge at Forge Pond, Hugh Orr's c. 1740 grist mill and iron forge along the Matfield River, and the Keith's c. 1760 slitting mill provided an industrial base as well. It has been written that "the making of small arms in New England, if not the world, commenced here" (at the factory of Hugh Orr). During the Revolutionary War, five hundred muskets were made for the colonists, as well as many cannons and large guns.

The 1750s creation of a training field on the eastern portion of the Town Common played an important role in the town's training of the Colonial Militia. In 1773, a Regimental Muster was held. "Col. Edson's Regiment, consisting of nine foot companies of this town and some from Abington were reviewed by His Excellency Governor Hutchinson. He was escorted to the home of Rev. John Angier near the place of parade. There were about 700 in arms and a greater concourse of people than the town had ever known."<sup>1</sup>

The musterfield continued to host significant events during the Colonial and Federal periods. In 1774, a Minute Company was formed and trained on the Common under Captain Robert Orr. These training sessions culminated in April, 1775, when the forty Minutemen met on the Common under the direction of Captain Orr and marched to Lexington. On September 11, 1786, a detachment of the Third Regiment met on the Common to march with Col. Orr to Taunton to repress Shay's Rebellion. In 1812, a contingent of over sixty men who had drilled on the musterfield was sent to Dorchester Heights. In 1814, the townsmen marched to Plymouth to guard the coast.

As the town continued to grow, again a larger meetinghouse was needed. The Third Meetinghouse, later to be renamed First Parish Church (MAP #24) was built in 1794 on the site of the First Meetinghouse. The Second Meetinghouse was not demolished until after the new one was completed. The new meetinghouse measured 54' by 68' and 28' high, with a center pedimented entry in the long side and a square belfry at one end. A major remodeling in 1850 gave it its present appearance. It is written that the building was given a quarter turn, but because the ridge of the roof still runs north/south and the steeple is still at the southerly end, it may have been that only the entrance was given the quarter turn to Central Street, with the large entrance pavilion added at that time.

In 1798, a new school was built to replace the earliest one. This new building was located on Plymouth Street, facing the Common, and stood roughly where the present High School entrance driveway is now located.

<sup>1</sup> Research by Edna Whitmore, East Bridgewater Historical Commission, Massachusetts Historical Commission Inventory Form #909, February, 1985.

United States Department of the Interior  
National Park ServiceNational Register of Historic Places  
Continuation SheetEast Bridgewater Common Historic District  
East Bridgewater (Plymouth County)  
MassachusettsSection number 8 Page 3

The only surviving residential property in the district which appears to have been built during this early period is the Lewis Keith House (MAP #22) at 274 Central Street. Early in its life, the building housed a general store in one room, with a dance hall above it. The store was operated by Lewis Keith, who also ran a stage line between East Bridgewater and Boston, over which the first local mail was carried. In 1834, Keith and others formed a Universalist Society, which met in the upper hall.

By 1810, the town's population had increased to 1195 and by 1830 to 1653. Small nodes of residential and industrial development were scattered throughout the town at key mill sites, but there was also by now a definite cluster at the Common. Many of the few earliest homes were moved to other parts of town and replaced by larger structures during the early nineteenth century. Among homes still extant from this period are the 1791 Noyes-Kingman House (MAP #9), the 1824 Dr. Samuel Orr House (MAP #27), the Levi Churchill House of 1829 (MAP #19), and the Abisha Churchill House (MAP #14) of 1830. The Chamberlain/Alden House (MAP #4) was built as a Federal/Cape farmhouse in 1826. The Chamberlain/Millet/Bartlett House (MAP #6) was built in 1835 on the site of the Rev. John Angier's home. Angier was the first minister of the East Parish.

The early nineteenth century brought increased prosperity to the town in the form of industrial expansion. The iron industry continued, supplemented by a machine shop to build machines for carding, roping and spinning cotton and sheep's wool, all part of a burgeoning New England textile industry. General Sylvanus Lazell, a prominent nail maker, began to attract new mechanics to East Bridgewater. Among them were Samuel Rogers, a clockmaker and inventor of nail machines, and Nathaniel Cross, a carriage maker. A thriving boot and shoe industry also grew up by mid-century. Charles Mitchell and Seth Bryant erected a shoe factory in 1829, and within three years, it was the town's largest industry. Two cotton mills were established, the Matfield Mfg. Co. (reorganized in 1827 as Orr Mfg. Co.) on the Matfield River and the East Bridgewater Mfg. Co. of 1827 on the Satucket River. A furnace produced fire frames, pumps, and machinery, a tack factory was begun in the 1820s, as was a shovel manufactory, and the operation of the Matfield River slitting mill by Levi and Zenas Keith continued. By 1840, the Carver Cotton Gin Co. bought out the East Bridgewater Mfg. Co. complex. A new Matfield Mfg. Co. built five locomotives here in the 1850s.

In 1839, a new ruling by the Commonwealth required the full separation of church and state. The First Parish Church could no longer also serve as a meetinghouse for town government. A new Town Hall was erected on land sold to the Town by Dr. Samuel Orr, grandson of Hugh Orr. The large Greek Revival building stood between Dr. Orr's house and the Old Graveyard. Later, it housed schoolrooms after the Allen School burned down in 1946, before being demolished in the 1950s.

The town's growth also dictated a need for expanded cemetery lands. In 1846, under the direction of Aaron Hobart, Esq. and others, the Proprietors of the East Bridgewater Cemetery voted to purchase three acres of land behind the First Parish Church from Cushing Mitchell. The first graves were relocated here from an earlier parcel near Forge Pond Hill which had been sold to the Old Colony Railroad Corporation. The site was later enlarged with purchases of abutting property from Charles Rogers and Henry Hobart. Water lines were installed in 1890. The cemetery was again enlarged westward in 1936 with the acquisition of the Kimball Sheldon estate and again in the 1970s when the site of the old Allen School was acquired.

Known as Central Cemetery, the sloping hillside topography and winding paths create a rural, naturalistic design. Old granite walls line the entrance path from behind First Parish Church and the eastern edge along Church Street. An 1846 school stood at the eastern edge of the cemetery behind the church, but was relocated to Northville because "it was felt that it was too depressing for the children to be subjected to see the graves being dug."<sup>2</sup>

Many of the town's most prominent nineteenth century citizens are buried in Central Cemetery, including Hugh Orr, iron manufacturer, Gen. Sylvanus Lazell, entrepreneur and builder of the Toll Road from Weymouth to Middleboro, Samuel Rogers, maker of silver watches, Stephen A. Morse, inventor of the twist drill, and Clarence Chandler,

<sup>2</sup> East Bridgewater Historical Society, "A Brief History of the Schools in East Bridgewater," September, 1996.

United States Department of the Interior  
National Park ServiceNational Register of Historic Places  
Continuation SheetEast Bridgewater Common Historic District  
East Bridgewater (Plymouth County)  
MassachusettsSection number 8 Page 4

cotton gin manufacturer. Other family names prominent in local circles include Hobart, Mitchell, Millet, Dean, Nutter, Keith, and Sheldon.

By mid-century, a small commercial district had evolved at the intersection of Bedford and Central Streets, main east-west and north/south axis roads. The outlying areas around the Common continued as farmlands, with more homes being built closer together along the main roads. Many of these homes were built by families successfully involved in the town's new industries. The Levi Churchill House (MAP #19) had a shoe shop in the rear shed during this time. Captain Branch Byram, who built his house at 254 Central Street (MAP #23) was a designer at a local iron foundry. The Hon. Aaron Hobart, who built the grand Italianate home at 175 Central Street (MAP #3) was a prominent attorney and gentleman farmer. Situated on 43 acres formerly part of the Allen family farm, the property included the large home, a large barn to its rear, and the small caretaker's cottage which survives at its northwest edge (MAP #1). The First Parish Parsonage (MAP #15) was built in 1854 to house the First Parish Church's minister and his family. Between 1854 and 1925, nine ministers resided in this gracious Greek Revival home.

Prominent East Bridgewater citizens built some of the district's finest late-nineteenth century homes. The Millet/Bailey/Spear House (MAP #8) was built by Dr. Asa Millet who moved here from Mattapoisett. The house originally had 22 rooms, a three-story barn, and a boat house along the Satucket River at the southerly edge of its property. George Webber, whose 1869 home is at 290 Central Street (MAP #20) owned a hardware store and later an automobile garage. The large barn behind his house was later moved forward and converted into the Greek Revival house which stands at 282 Central Street (MAP #21).

Additional houses were built along Central Street during the latter half of the nineteenth century. Homes from this era are large and gracious, designed as stylish examples of late Greek Revival, Italianate, Stick, and Eastlake styles. These include the B. F. Ellis House at 326 Central (MAP #18), the Herman Morse House (MAP #17) at 334 Central Street, the Clarence Chandler House (MAP #16) at 344 Central Street, and the Joseph Strong House (MAP #11) at 353 Central Street. Clarence Chandler was an engineer who had a machine shop in Bridgewater. Joseph Strong was an engineer for the Carver Cotton Gin Company and a benefactor to many local causes. He is best known for donating Strong's Field to the Town for public recreational uses.

A second church edifice was added along the northern side of Central Street in 1894. Located between the old Town Hall and the Dr. Samuel Orr House and built on land donated by Mrs. Elizabeth Keith (Dr. Orr's daughter and heir), stood the first St. John's Church. It was an elegant Victorian Gothic wooden building which was destroyed by fire in 1954. The present St. John's Church of 1955 (MAP #J) stands in its place.

The Common's appearance changed minimally during the nineteenth century. About 1820, local citizen Williams Latham donated the planting of large shade trees along Central Street. In 1848, a granite post fence with iron rails was added at the Common's edges. Following the Civil War, a tall granite obelisk was placed on the Town Common as a memorial to the 47 East Bridgewater soldiers who lost their lives. It was surrounded by an ornate iron fence (removed in 1932). The monument was dedicated in 1874. The Common continued to serve as a gathering place for Memorial Day Ceremonies at the Monument, for band concerts, lawn parties, town parades, etc.

The 1950s saw the first significant change to the Common, when the musterfield at its east end was sold off by the church to raise money. Morse Avenue was laid out, and a Cape-style house was built at 33 Morse Avenue in 1954 (MAP #B). Morse Avenue was named for Fred B. Morse, East Bridgewater's only casualty of World War II. The remaining easterly portion of the musterfield was developed in 1984 as a cluster of six Colonial-style condominiums. In 1982, the Town purchased the Common from the adjacent church and was awarded a state grant to restore the Common to its historic appearance. Later changes to the Common have been minimal: the addition of a wooden gazebo near the southwest edge, and the recent installation at the west end of a granite war memorial to honor lives lost in World War II, Korea and Vietnam.

(continued)

United States Department of the Interior  
National Park ServiceNational Register of Historic Places  
Continuation SheetEast Bridgewater Common Historic District  
East Bridgewater (Plymouth County)  
MassachusettsSection number 8 Page 5

In the late 1890s, Dr. Charles Millet (son of Dr. Asa Millet) established a "fresh air" sanatorium on the property of the Chamberlain/Millet/Bartlett House (MAP #6). The property had been owned in the 1860s and early 1870s by Atty. James Mitchell and his wife Harriet Angier Mitchell, a great granddaughter of Rev. James Angier whose home had previously occupied the site and for whom the sloping rear hill had been first named "Angier's Hill." The Mitchells were responsible for terracing the hillside and adding the granite steps. Dr. Asa Millet purchased the property in 1874 for his own residence, then in 1875, built a small studio building (MAP #30) on the first rear terrace for his son, artist Francis Davis Millet.

Dr. Millet's plan for a sanatorium was considered an innovative treatment for tuberculosis. A long ell at the rear of the house served as part of the hospital. In the rear yard were several small "open air shacks" where the patients lived. The large barn was moved to the lowest terrace and became the nurses' home. The sanatorium remained in use until the 1920s. Several of the shacks and parts of the rear ell were relocated to Strong Avenue and converted into homes.

The Francis Davis Millet Studio has significance as the studio of a locally renowned artist of the late nineteenth/early twentieth centuries. Trained in Belgium and Italy, Millet also worked in Boston, and intended the studio to be a seasonal workspace. He enlarged it with a rear two-story addition in which he reconstructed an antique colonial kitchen from the Hayward House of ca. 1682. Millet's works painted here include *Portrait of a Lady in Costume of 1740*, which was shown at the Centennial Exposition of 1876, *Baby Worship*, and *Toasting Apples*. After 1881, Millet seldom used the studio, preferring New York and later England. Millet died in 1912 as a passenger on the *Titanic*. Several of his works are on display at the East Bridgewater Public Library, the New Bedford Public Library, Brockton Library, and at the Tate Gallery, London, the Metropolitan Museum in New York, and the Boston Museum of Fine Arts. The studio was acquired in 1925 as an art studio for Richard Franklin Bartlett, owner of the adjacent house at 48 Plymouth Street. It is now a private home.

Early twentieth century construction along Central Street was limited to two small bungalow homes on the street's south side, #301 and 367 Central Street (MAP #7, 13). These were built on small lots sold off from existing homes, often for family members, and fit in well with the scale, massing, and siting of their streetscapes. The Town's acquisition of the Aaron Hobart Estate in the 1950s to replace the Old Town Hall enabled this important structure to be preserved. The 1958 High School, although a later intrusion visually, continued the long-standing effort to maintain the Town Common area as the center of political and educational activities.

The district continues to maintain its image as an important center of early town growth. With improved access from nearby highways, other main roads of the town have been commercialized and have lost some of their historic charm. The East Bridgewater Common fully maintains the quiet, peaceful ambiance and quaint charm that have characterized its growth for over 200 years.

**Criterion C:** The East Bridgewater Common Historic District is significant as a cohesive area of fine late-eighteenth to nineteenth century homes laid out around a central triangular Common in front of an impressive Federal-style church. The majority of its earliest homes are in the Federal style, sometimes including later ells and rear wings to accommodate expanding families or various farm-related functions. These Federal designs are generally modest but finely-crafted interpretations of their style. Mid-century properties in the Greek Revival and Italianate styles are equally restrained in their designs, save for the grand Aaron Hobart Estate. This reflects the relatively isolated location of the town as well as the moderate but not overwhelming financial success of its early industrialists. The two later homes in the Stick and Eastlake styles are somewhat more exuberant, which is the nature of these styles. The many different styles demonstrate the district's continued focus on fashionable design throughout its development period.

The district has been compared to other parts of East Bridgewater, and it is the largest cluster grouping of eighteenth and nineteenth century homes. Although there are old homes set along the town's many winding ways, no other

(continued)

United States Department of the Interior  
National Park ServiceNational Register of Historic Places  
Continuation SheetEast Bridgewater Common Historic District  
East Bridgewater (Plymouth County)  
MassachusettsSection number 8 Page 6

area has a focal point as distinctive as the Common or a landmark building as distinctively situated as the First Parish Church.

The district is characterized by the pattern of homes, churches, and civic buildings which line Central Street and face towards the Common. Most are set quite close to the street on relatively narrow lots, although many of the lots extend back to create deep rear yards. A number of properties have small garages set behind them, attached or free-standing barns, in matching architectural styles. The primary street, Central Street, has narrow sidewalks and is partially tree-lined. Despite considerable losses to storm damage and disease, there are a number of trees between properties that create a buffer from one property to the next.

The district's earliest surviving home is the Lewis Keith House, ca.1738, (MAP #22). It is set very close to the street and is a two-story, five-bay, center entrance design. Clad in wooden shingles, the original design has been altered with a small gabled entry porch supported by simple columns. The hipped roof probably also dates from the Federal period. Altogether, the house is a well-proportioned and pleasingly-detailed Georgian/Greek Revival design.

Another early resource dates from 1791 and is noteworthy for its design. The Noyes/Kingman House (MAP #9) is characteristic of the Georgian style in its five-bay, center entrance design, two-story height and ridge roof capped by a massive central chimney. Faced in clapboards, it has an architrave molding and narrow pilaster trim at the entrance, and retains its original six-over-six sash pattern.

The Joseph Chamberlain/Samuel Green Alden House (MAP #4) has the district's finest example of a Federal style doorway. Built in 1826, the house is a simple Cape in massing, five bays wide with a center entrance. It is somewhat unusual in that its plan has a central hall, which most Capes in East Bridgewater did not have (probably because they were of considerably earlier date). The doorway consists of an elliptical fanlight with delicate tracery, while the paneled door is flanked by four-lie sidelights above paneled bases.

Other houses from the Federal period are many, and most retain their original two-story massing and detailing. These include the Levi Churchill House (MAP #19) of 1829, the Chamberlain/Millet/Bartlett House (MAP #6) of 1835, and the Major Seth Johnson House (MAP #5) of 1805. Two homes have been altered by the later addition of front porches. The Branch Byram House (MAP #23) is a Cape design, to which a three-bay dormer and pitched-roof porch were added to the facade in 1912. The Dr. Samuel Orr House retains its gracious massing and hipped roof behind a large wrap-around porch with enclosed ends which was added early in this century.

The First Parish Meetinghouse of 1794/1850 (MAP #15) is a dominating presence in the district. Its large size and siting on the north/south axis of the Common give it a high profile from all directions. The tall clocktower and steeple are highly visible. The design of the entrance elevation, three bays wide with a gabled pavilion and three matching entrance doors is functional, simple, and yet elegant. The later parish hall is set back from the main mass and is nicely detailed and proportioned as an Italianate addition.

The district's Greek Revival designs are fine examples of their type, and are well-preserved. The George Webber House (MAP #20), although sheathed in aluminum siding, retains its original proportions, its three-bay, sidehall entrance facade, bay window, overhanging roofline, and a lovely spindled porch (probably later) along the west elevation.

The First Parish Parsonage (MAP #15) is a sidehall Greek Revival design, three bays wide with an entrance in the east bay of the front gable end. A nicely-proportioned porch with Classical columns spans the facade, which has pilastered corners and deep returns at the cornices.

The district features Italianate designs of very different types. One, the Millet/Bailey/Spear House (MAP #8) is a nicely-detailed design for a large, rambling home. Characteristic of the style are the large brackets at the roofline, the large bay

(continued)

**United States Department of the Interior  
National Park Service****National Register of Historic Places  
Continuation Sheet**East Bridgewater Common Historic District  
East Bridgewater (Plymouth County)  
MassachusettsSection number 8 Page 7

windows with round-arched windows, and two open porches with Italianate supports. Another simple Italianate design is the parish hall addition to the First Parish Church. It is a large rectangular mass with large brackets supporting the cornice and several bay windows at the first story. A far more exuberant example is the Aaron Hobart Estate (MAP #3), which is of a grand scale, with deep overhanging cornices supported by pairs of large carved brackets. Again, bay windows are successfully used to enrich the profile and three-dimensionality of the design.

The Herman Morse House (MAP #17) is the district's only Stick Style house, as there were only a scattering of homes built in the late nineteenth century. Its characteristic details include an open porch with bracketed roof at the side entrance, large gables with diagonal trusswork in their peaks, and exposed rafters and diagonal bracing beneath the overhanging eaves.

Likewise, there is only one Eastlake design in the district, the Morse/Thomas House (MAP #10). It is a graceful example of its type, with a great degree of spindlework in the porch balustrades, balustraded cornices, and large brackets which feature pierced-circle and teardrop motifs.

The district's two Bungalow style homes are representative of their dates, 1910 and 1924, and exude the modest, cozy cottage feeling this style intended to create. Their characteristic features include steep sweeping roofs, exposed rafters and braces, and small dormers relieving the broad roof planes.

The Town has committed itself to restoring the Town Common in recent years, and has successfully accomplished this task. The fine architectural quality of the district's buildings continues to be recognized by the individual efforts to restore them and by the East Bridgewater Historical Commission's work to increase public awareness of their history through walking tours and historic designations. The strong rhythmic pattern of buildings lining Central Street and facing towards the Common clearly defines the historic town center. Similarities in scale, massing, and materials further project a clearly discernible image of the district as an area rich in architectural value and importance.

**Archeological Significance:**

Since patterns of prehistoric settlement and subsistence in East Bridgewater are poorly understood, any surviving sites could be significant. Amateur and professional research in this area of Massachusetts has been biased towards more coastal locales. As a result, interior coastal towns like East Bridgewater are underreported. Prehistoric sites in this area could provide valuable data relating to the role of interior coastal sites in both regional and local settlement and subsistence models. Prehistoric sites in the East Bridgewater Common Historic District may provide important information relating to site variability and resource use in the vicinity of tributaries or the headwaters of the Taunton River, a regionally important prehistoric settlement area. Prehistoric sites in this area span the full range of settlement history recognized for Native Americans in this area of Northeastern United States. Prehistoric sites in the district may contain information indicating how this settlement adapted to changes in the natural and social environment through time.

Historic archaeological resources described above have the potential to provide detailed information on the district's role in the settlement of East Bridgewater beginning in the 17<sup>th</sup> century. The same sources of information can also provide further information relating to the district's development as the civic and religious center of the village during the 18<sup>th</sup> and 19<sup>th</sup> centuries. Further historical research in conjunction with archaeological survey and testing can identify the potential and/or precise locations of 17<sup>th</sup> century European landuse activities in the district area. This information may include the sites of residences, agricultural outbuildings and stone walls that have been recognized in other areas to indicate early patterns of land division and use. The potential also exists for similar information dating to the 18<sup>th</sup> and 19<sup>th</sup> centuries. Potential sites dating to the 18<sup>th</sup> century may actually be more common in the district than later 19<sup>th</sup> century sites. Few extant 18<sup>th</sup> century structures exist in the district. Most

(end)

United States Department of the Interior  
National Park ServiceNational Register of Historic Places  
Continuation SheetEast Bridgewater Common Historic District  
East Bridgewater (Plymouth County)  
MassachusettsSection number 8 Page 8

structures dating to this period are reportedly moved from their original locations or destroyed. The majority of extant structures in the district date to the 19<sup>th</sup> century with little demolition reported for the period. Structural remains of 17<sup>th</sup> through 19<sup>th</sup> century residences can help reconstruct patterns of settlement in the district for those periods. Archaeological sites can also help reconstruct patterns of civic and institutional development, especially for the 18<sup>th</sup> and 19<sup>th</sup> centuries. Archaeological testing can determine if structural elements of the First and Second Meetinghouse survive in the vicinity of the extant First Parish Church. Similar research can also settle any debate over whether the First Parish Church was moved or re-oriented in its site and the extent of alterations to entrances. Archaeological research can also determine the potential or locations for structural survivals for Saint John's Church, destroyed by fire in 1954. In addition to information pertaining to location and integrity, archaeological research can also identify construction methods and details of architectural features for each of the structures listed above. Archaeological research can also contribute information relating to civic and institutional development in the district during the 18<sup>th</sup> and 19<sup>th</sup> centuries. Archaeological evidence from several schools originally located in the vicinity of the Common and First Parish Church can help document the growth and evolution of the educational system in East Bridgewater as well as the specific architectural features associated with each structure. Similar information may also be available from archaeological sources for the original Town Hall built in the mid-19<sup>th</sup> century between Dr. Samuel Orr's house and the old graveyard. Information might also be available from archaeological sources in the district that details aspects of mental health care during the 19<sup>th</sup> century. Archaeological survivals from "open air shacks" associated with Dr. Charles Millet's "fresh air" sanatorium can provide information relating to living conditions of patients at mental health facilities during the period. Evidence may also exist detailing methods of care at the facility. Structural evidence from outbuildings for each of the building types noted above may also contribute important information. This data can include the overall layout of residential sites, farms and related facilities associated with religious and civic structures. Facilities associated with outbuildings related to civic and religious structures can include horse barns, carriage sheds, wood sheds and storage. Detailed analysis of occupational related features (trash pits/areas, privies, wells) can also help define the complete layout of facilities associated with residential, agricultural and civic structures and the individuals who used them. These sources may also contain technological information relating to domestic lifestyles, agricultural production and transportation. Archaeological survey and testing may also recover individual artifacts and artifact scatters from town activities held on the Common. While these artifacts are probably of limited research potential they may represent information related to military technology and training as well as other town related socio/political functions. Important information can also be obtained from archaeological resources associated with burial grounds in the district. Archaeological survey and testing can be used to identify the locations of unmarked burials in each cemetery. This research can be accomplished without actually disturbing burials. Individual and groups of graves can be identified by removing the sod and loam to outline grave shafts, often visible in historic cemeteries immediately below the loam. This information can be used to reconstruct the accurate boundaries of cemeteries including smaller groups and individual graves within each cemetery. Post molds, possibly indicating old fence lines can also assist in this task. Osteological analysis of skeletal remains from burial grounds in the district can also contribute important information relating to the East Bridgewater population. Detailed analysis of skeletal remains associated with individual and groups of graves can contribute information relating to the health and pathologies associated with specific families and socio/economic groups who inhabited the town since its settlement. This type of analysis can provide an important source of information on specific diseases or epidemics that may have effected the town during the 18<sup>th</sup> and 19<sup>th</sup> centuries. Funerary artifacts associated with grave sites and actual burials can also contribute important information relating to interred individuals and their memorial treatment after death. Artifacts associated with actual skeletal remains can contribute important information relating to an individuals religious beliefs, socio-economic status and other interests. Artifacts located in other areas of the grave shaft, including the surface locale can provide important information relating to the treatment of an individual or group after death by the persons family or other social grouping.

(end)

United States Department of the Interior  
National Park ServiceNational Register of Historic Places  
Continuation SheetEast Bridgewater Common Historic District  
East Bridgewater (Plymouth County)  
MassachusettsSection number 9 Page 19. MAJOR BIBLIOGRAPHICAL REFERENCESBerkowitz, Max, et. al. Old Bridgewater Tercentenary, 1656-1956. Old Bridgewater Historical Society, 1956. 86pp.Cushing, John D. "Town Commons of New England, 1640-1840." *Old Time New England*, Winter, 1961.East Bridgewater Historical Commission. Application for City and Town Commons Grant. Unpublished, East Bridgewater, MA, 1984.East Bridgewater Historical Commission, Wilmar Armer, Hazel Black, Isabelle Odabashian, Lena Peterson, Margaret Alexander, Barbara Rubin, Jane Perkins, Joan Leland, Dorothy Nutter. Survey of Historical Properties. Manuscript. (1973-1996) Illus.

East Bridgewater Historical Commission, "An Historical Walk Around the Common." July, 1995. Pamphlet.

Hurd, D. Hamilton. History of Plymouth County. Philadelphia: J. W. Lewis. 1884.Keith, Benjamin W., et. al. Earlier Days in East Bridgewater. Pamphlet. East Bridgewater Historical Commission. 1977. 31pp.

Maps, Collection of East Bridgewater Public Library.

1798	Samuel Rogers
1829	Framed printed map of East Bridgewater
1848	Map of East Bridgewater surveyed by M. Bates, Jr.
1857	Wall map of Plymouth County

Mitchell, Nahum. History of the Early Settlement of East Bridgewater. Baltimore: Gateway Press, Inc., 1975. 421pp.

Registry of Deeds, Plymouth County, Russell St., Plymouth, MA.

Rich, Paul John III. The History of East Bridgewater. Pamphlet. East Bridgewater, MA: The Arthur Baggia Press, 1970. 32pp.Vital Records of East Bridgewater to 1850. 1656-1850.Wilson, David K. ed. The East Bridgewater Sesquicentennial, 1823-1973. East Bridgewater, MA: East Bridgewater Sesquicentennial, Inc., 1973. 96pp.

(end)

East Bridgewater Common HD  
Name of Property

Plymouth, MA  
County, State

## 10. Geographical Data

Acreage of Property 69 acres

### UTM References See continuation sheet.

(Place additional UTM references on a continuation sheet)

1. 19 Zone	337920 Easting	4654600 Northing	3. 19 Zone	338800 Easting	4654580 Northing
2. 19 Zone	338150 Easting	4654390 Northing	4. 19 Zone	338680 Easting	4655000 Northing
			5. 19 See continuation sheet	338120	4654910

### Verbal Boundary Description

(Describe the boundaries of the property on a continuation sheet.)

### Boundary Justification

(Explain why the boundaries were selected on a continuation sheet.)

## 11. Form Prepared By

name/title Margo Webber, Preservation Consultant with Betsy Friedberg, NR director, MHC

organization Massachusetts Historical Commission date April 1999

street & number 220 Morrissey Boulevard telephone 617-727-8470

city or town Boston state MA zip code 02125

### Additional Documentation

Submit the following items with the completed form:

#### Continuation Sheets

#### Maps

A **USGS map** (7.5 or 15 minute series) indicating the property's location.

A **sketch map** for historic districts and properties having large acreage or numerous resources.

#### Photographs

Representative **black and white photographs** of the property.

**Additional items** (Check with the SHPO or FPO for any additional items)

### Property Owner

(Complete this item at the request of the SHPO or FPO.)

name multiple

street & number \_\_\_\_\_ telephone \_\_\_\_\_

city or town \_\_\_\_\_ state \_\_\_\_\_ zip code \_\_\_\_\_

**Paperwork Reduction Act Statement:** This information is being collected for applications to the National Register of Historic Places to nominate properties for listing or determine eligibility for listing, to list properties, and to amend existing listings. Response to this request is required to obtain a benefit in accordance with the National Historic Preservation Act, as amended (16 U.S.C. 470 et seq.).

**Estimated Burden Statement:** Public reporting burden for this form is estimated to average 18.1 hours per response including the time for reviewing instructions, gathering and maintaining data, and completing and reviewing the form. Direct comments regarding this burden estimate or any aspect of this form to the Chief, Administrative Services Division, National Park Service, P.O. Box 37127, Washington, DC 20013-7127; and the Office of Management and Budget, Paperwork Reductions Project (1024-0018), Washington, DC 20503.

United States Department of the Interior  
National Park ServiceNational Register of Historic Places  
Continuation SheetEast Bridgewater Common Historic District  
East Bridgewater (Plymouth County)  
MassachusettsSection number 10 Page 1

## 10. GEOGRAPHICAL DATA

Verbal Boundary Description

Beginning at the northwest corner of Parcel #51-13, the boundary crosses Central Street to the northeast and follows the west boundary of Parcel #51-22, the Old Graveyard, continuing along the west boundary of Parcel #51-19, the Central Cemetery, turning east along its northern boundary until reaching the west side of Church Street. Here, it turns southward for a distance of 70' to the southerly edge of Parcel #60-15 where it crosses Church Street to the east and continues eastward along the rear property lines of the properties on the north side of Central Street until reaching the northeast corner of parcel #50-46. Then, it turns southward along the east edges of Parcels #50-46 and 50-45, crosses Central Street, and runs eastward along the south side of said street to the northeast corner of Parcel #50-14, where it turns southward along the east edge of said parcel to its southeast corner.

The boundary then proceeds westward along the rear property lines of the parcels on the south side of Central Street until reaching the northeast corner of Parcel #51-39, where it turns southward along the rear boundaries of Parcels #51-39 and #51-1, then westward along the southern edge of Parcel #51-1, crossing Plymouth Street to the west and then proceeding southwest along the boundary of Parcel #51-11.

It then turns westward along the rear boundaries of Parcels #51-11 and 51-12, to the southwest corner of Parcel #51-12, turns southwest for a distance of 240', turns westward at a 90-degree angle and runs westward across the Town property of Parcel #51-13 to its western edge, where it turns northeast and follows said property line northeastward to the point of origin.

See attached East Bridgewater Assessor's Maps #50, 51, 60 and 61.

Boundary justification

This boundary definition includes all of the properties fronting directly onto the East Bridgewater Common and extends eastward and westward of the Common along Central Street to include other important properties associated with the nineteenth century residential development of the town center area. The Common has served as the focal point of the town's development in terms of religious and governmental affairs, as well as being a strong component of early residential growth. The district includes the earliest church and numerous mid-to-late eighteenth and nineteenth century homes. The Town Common, the central triangular green space, historically served as an open space, around which the properties were situated. It continues to be the chief visual element and organizing feature of the district's design.

The westerly boundary separates the properties with views towards the Common from a twentieth century school building and several altered homes which are closer in proximity and character to the commercial area along Bedford Street one block to the west. The west and north boundaries of the town cemeteries create an edge at their edges which are approached only from other directions. The rear property lines of parcels both north and south of Central Street create a straight linear district in its east portion. The east boundary is drawn at a point where several newer Cape-style houses have been built and where the pattern of large, closely-spaced homes begins to dissipate.

(continued)

United States Department of the Interior  
National Park Service

# National Register of Historic Places Continuation Sheet

East Bridgewater Common Historic District  
East Bridgewater (Plymouth County)  
Massachusetts

Section number 10 Page 2

---

The southern boundary includes the nineteenth century properties which overlook the Common from Morse Avenue and Plymouth Street. It then cuts across the Town-owned parcel to include the High School and Town Offices which front on Central Street, but excluding the Town-owned playing fields and parking lots behind these two buildings. These areas were acquired by the Town as part of the former Hobart Estate, but today have no visual association with the Hobart property.

(end)

**United States Department of the Interior  
National Park Service**

**National Register of Historic Places  
Continuation Sheet**

East Bridgewater Common Historic District  
East Bridgewater (Plymouth County)  
Massachusetts

Section number photo Page 1

**PHOTOGRAPHS**

The identification information listed below pertains to photographs 1 through 13.

Photograph by: Wilmar Armer  
Date: January, 1991  
Negative at: East Bridgewater Historical Commission  
P. O. Box 224  
East Bridgewater, MA 02333

The following information pertains to photographs 14 through 18:

Photograph by: Margo Webber  
Date: July, 1998  
Negative at: Massachusetts Historical Commission  
220 Morrissey Boulevard  
Boston, MA 02125

- Photo 1: Looking north from south side of Common towards south elevation of First Parish Church
- Photo 2: Looking northeast from southwest edge of Common towards south and west elevations of First Parish Church
- Photo 3: Looking east along north side of Central Street towards St. John's Church, Dr. Samuel Orr House, and spire of First Parish Church
- Photo 4: Looking northeast from south side of Central Street at Church Street towards south elevation of Branch Byram House
- Photo 5: Looking northwest from Central Street towards Old Graveyard
- Photo 6: Looking south across Common at north elevation of Joseph Chamberlain/Samuel Green Alden House
- Photo 7: Looking southeast from Common towards west and north elevations of Chamberlain/Millet/Bartlett House
- Photo 8: Looking west along north side of Central Street towards Lewis Keith House, with First Parish Church beyond
- Photo 9: Looking northwest from Central Street towards south and east elevations of Levi Churchill House
- Photo 10: Looking eastward along south side of Central Street towards Noyes/Kingman House and Morse/Thomas House
- Photo 11: Looking eastward along south side of Central Street towards Joseph Strong House, with Dr. Daniel Chaplin House and George Simpson House beyond
- Photo 12: Looking northeast from Central Street towards Clarence Chandler House

(continued)

**United States Department of the Interior  
National Park Service**

**National Register of Historic Places  
Continuation Sheet**

East Bridgewater Common Historic District  
East Bridgewater (Plymouth County)  
Massachusetts

Section number photo Page 2

---

- Photo 13: Looking southeast towards original portion of Aaron Hobart Estate/Town Offices, with new addition at right
- Photo 14: Looking southeast at addition to Aaron Hobart Estate
- Photo 15: Looking south towards north and west elevations of 43-45 and 47 Morse Avenue
- Photo 16: Looking southeast at north elevation of East Bridgewater High School
- Photo 17: Looking northwest from Central Street towards south elevation of St. John's Church
- Photo 18: Looking south across Common at north elevation of Richard C. Bartlett House

(end)



Maple Avenue

Bedford Street

Central Cemetery

Church Street

Central Street

Stevens Court

Morse

Strong Avenue

Spence Avenue

Plymouth Street

East Bridgewater Common Historic District  
East Bridgewater, MA

Sketch Map (no scale)

----- District Boundary



North

DISTRICT DATA SHEET -- East Bridgewater Common Historic District, East Bridgewater, Plymouth County, Massachusetts

Map #	MHC #	Assessor's BI/Parcel #	Historic Name	Street Address	Date	Style	Resource Type	Status
1		51-13	Hobart Estate Caretaker's Cottage	137 Central St.	1845	Greek Revival	B	C
2		multiple	System of Old Granite Retaining Walls	137-175 Central, Church and Plymouth Sts.	ca.1680- ca.1855	Utilitarian	Str	C
29	810	51-22	Old Graveyard	140-180 Central St.	ca.1703+	no style	S	C
3	74	51-13	Aaron Hobart Estate/Town Offices	175 Central St.	1854	Italianate	B	C
28	903	51-21	Spanish-American War Memorial	190 Central St.	1941	no style	O	C
J		51-20	St. John's Church	200 Central St.	1955	Colonial Revival	B	NC
27	69	51-19	Dr. Samuel Orr House	210 Central St.	1824, alt. ca.1910	Federal	B	C
24	i	51-18	First Parish Church	234 Central St.	1794/ 1850	Federal/ Italianate addition	B	C
		51-18	Garage/shop	234 Central St.	ca.1920	Cape	B	C
		51-18	Shed	234 Central St.	ca.1920	Utilitarian	B	C
25	802	61-19, 61-15	Central Cemetery	rear of 234 Central St.	1845+	no style	S	C
26	909	51-17	Town Common	Central St. at Plymouth St.	1721	--	S	C
		51-17	Civil War Obelisk		1874	Classical Revival	O	C
		51-17	Granite/iron Fence		19th c.	Utilitarian	O	C
		51-17	Gazebo					
		51-17	Veterans' Monument		1970	Victorian Repro.	Str	NC
		51-17	Flagpole		1989	Modern	O	NC
		51-17			—	no style	O	C

## DISTRICT DATA SHEET -- East Bridgewater Common Historic District, East Bridgewater, Plymouth County, Massachusetts

Map #	MHC #	Assessor's Bl/Parcel #	Historic Name	Street Address	Date	Style	Resource Type	Status
23	13	50-52	Branch Byram House	254 Central St.	ca.1835, alt. 1912	Cape	B	C
		50-52	Garage	254 Central/Church St. access	1920+	Colonial Revival	B	C
		50-52	New Garage	254 Central St.	1950+	Barn Repro.	B	NC
22	80	50-51	Lewis Keith House	274 Central St.	1738/ alt.,ca. 1835	Georgian/Greek Revival	B	C
31		multiple	Site of Indian Trail	rear of 254, 274, 290, 298 Central St.	1600s	--	S	C
F		50-40	Townhouse Condos	279-283 Central St.	1984	Colonial Revival	B	NC
21		50-53	"Old Webber Barn" House	282 Central St.	ca.1880/19 00	Greek Revival	B	C
G		50-40	Townhouse Condos	285-287 Central St.	1984	Colonial Revival	B	NC
H		50-40	Townhouse Condos	289-293 Central St.	1984	Colonial Revival	B	NC
20		50-50	George Webber House	290 Central St.	1869	Greek Revival/ Italianate	B	C
		50-50	Garage	290 Central St.	1960+	Colonial Revival	B	NC
19	22	50-54	Levi Churchill House	298 Central St.	1829	Federal	B	C
7		50-49	Bradford Alexander House	301 Central St.	1924	Bungalow	B	C
		50-49	Garage	301 Central St.	1924	Utilitarian	B	C
I		50-68	Two-Unit Condo	210-212 Central St.	1982	Garrison	B	NC
		50-68	Garage	210-212 Central St.	1982	Utilitarian	B	NC
8		50-38	Millet/Bailey/ Spear House	311 Central St.	1854	Italianate	B	C
		50-38	Shed	311 Central St.	20th c.	Utilitarian	B	NC

## DISTRICT DATA SHEET -- East Bridgewater Common Historic District, East Bridgewater, Plymouth County, Massachusetts

Map #	MHC #	Assessor's Bl/Parcel #	Historic Name	Street Address	Date	Style	Resource Type	Status
18		50-48	B. F. Ellis House	326 Central St.	ca.1875	Greek Revival	B	C
		50-48	Shed	326 Central St.	1960+	no style	B	NC
9	9	50-37	Noyes/Kingman House	329 Central St.	ca. 1790	Georgian	B	C
		50-37	Garage	329 Central St.	ca.1900	Utilitarian	B	C
17		50-47	Herman Morse House	334 Central St.	ca. 1875	Stick	B	C
10		50-36	Morse/Thomas House	339 Central St.	ca. 1900	Eastlake	B	C
		50-36	Shed	339 Central St.	ca.1920	no style	B	C
		50-36	Above-ground pool	339 Central St.	1980+	no style	O	NC
16	131	50-46	Clarence Chandler House	344 Central St.	1889	Italianate	B	C
		50-46	rear cottage	344 Central St.	1889+	Italianate	B	C
15	132	50-45	First Parish Parsonage	346 Central St.	1854	Greek Revival	B	C
11		50-18	Joseph Strong House	353 Central St.	ca. 1904	Colonial Revival	B	C
		50-18	Garage	353 Central St.	ca. 1904	Utilitarian	B	C
12		50-17	Dr. Daniel Chaplin House	361 Central St.	ca.1820	Greek Revival	B	C
		50-17	Barn	361 Central St.	ca.1830+	Greek Revival	B	C
13		50-59	George Simpson House	367 Central St.	1910	Bungalow	B	C
		50-59	Garage	367 Central St.	1910+	Utilitarian	B	C

DISTRICT DATA SHEET -- East Bridgewater Common Historic District, East Bridgewater, Plymouth County, Massachusetts

Map #	MHC #	Assessor's BI/Parcel #	Historic Name	Street Address	Date	Style	Resource Type	Status
14	174	50-16	Abisha Churchill House	377 Central St.	1830	Cape	B	C
		50-16	Barn	377 Central St.	19th c.	Utilitarian	B	C
B		51-27	Richard C. Bartlett House	33 Morse Ave.	1954	Cape/Split	B	NC
C		50-40	Townhouse Condos	41 Morse Ave.	1984	Colonial Revival	B	NC
D		50-40	Townhouse Condos	43-45 Morse Ave.	1984	Colonial Revival	B	NC
E		50-40	Townhouse Condos	47 Morse Ave.	1984	Colonial Revival	B	NC
A		51-13	East Bridgewater High School	Plymouth St.	1958	Colonial Revival	B	NC
		51-13	Historical Marker	Plymouth St.	1966	no style	O	NC
4	12	51-12	Joseph Chamberlain/ Samuel Green Alden House	33 Plymouth St.	1826	Federal	B	C
		51-12	Shed	33 Plymouth St.	ca.1900	no style	B	C
		51-12	Shed	33 Plymouth St.	1960+	no style	B	NC
6	35A	51-39	Chamberlain/ Millet/Bartlett House	48 Plymouth St.	1835/ 1875	Federal	B	C
		51-39	Garage	48 Plymouth St.	ca.1910	Utilitarian	B	C
5	178	51-11	Major Seth Johnson House	49 Plymouth St.	1805	Federal	B	C
		51-11	Shed	49 Plymouth St.	1920+	no style	B	NC
		51-11	Museum/chapel	49 Plymouth St.	1960+	Modern	B	NC
30	35B	51-01	Francis Davis Millet Studio	54 Plymouth St.	1875	Utilitarian	B	C

DISTRICT DATA SHEET -- East Bridgewater Common Historic District, East Bridgewater, Plymouth County, Massachusetts

Map #	MHC #	Assessor's BI/Parcel #	Historic Name	Street Address	Date	Style	Resource Type	Status
-------	-------	---------------------------	---------------	----------------	------	-------	------------------	--------

**KEY:**

B	Building	C	Contributing Resource
O	Object	NC	Non-Contributing Resource
S	Site		
Str	Structure		

**TOTAL RESOURCES: 69**

Total Contributing: 47  
 38 Buildings  
 4 Objects  
 4 Sites  
 1 Structure

Total Non-Contributing: 22  
 18 Buildings  
 3 Objects  
 0 Sites  
 1 Structure

UNITED STATES DEPARTMENT OF THE INTERIOR  
NATIONAL PARK SERVICE

NATIONAL REGISTER OF HISTORIC PLACES  
EVALUATION/RETURN SHEET

REQUESTED ACTION: NOMINATION

PROPERTY East Bridgewater Common Historic District  
NAME:

MULTIPLE  
NAME:

STATE & COUNTY: MASSACHUSETTS, Plymouth

DATE RECEIVED: 4/15/99 DATE OF PENDING LIST: 4/26/99  
DATE OF 16TH DAY: 5/12/99 DATE OF 45TH DAY: 5/30/99  
DATE OF WEEKLY LIST:

REFERENCE NUMBER: 99000559

REASONS FOR REVIEW:

APPEAL: N DATA PROBLEM: N LANDSCAPE: N LESS THAN 50 YEARS: N  
OTHER: N PDIL: N PERIOD: N PROGRAM UNAPPROVED: N  
REQUEST: N SAMPLE: N SLR DRAFT: N NATIONAL: N

COMMENT WAIVER: N

ACCEPT  RETURN  REJECT 5/12/99 DATE

ABSTRACT/SUMMARY COMMENTS:

**Entered in the  
National Register**

RECOM./CRITERIA \_\_\_\_\_

REVIEWER \_\_\_\_\_ DISCIPLINE \_\_\_\_\_

TELEPHONE \_\_\_\_\_ DATE \_\_\_\_\_

DOCUMENTATION see attached comments Y/N see attached SLR Y/N



First Parish Church  
234 Central Street  
East Bridgewater MA

Photographer: Wilmar Armer Jan. 91

Negative: Historical Commission Files

Photograph no 31 of III A

View: Looking north from Morse Avenue showing  
Common granite post fence, Civil War Monument,  
and Ceramic Wall in Churchyard. (Wide angle lens.)

Photo #1 of 13

Map location (24)



First Parish Church

234 Central Street

East Bridgewater MA

Photographer: Wilmar Armer Jan. 91

Negative: Historical Commission Files

Photograph No. 12 of Set A I

View: From Common showing bandstand  
looking across Central Street to Church  
and Parish House addition

Photo # 2 of 13

Map location (24)



Dr. Samuel Orr House  
210 Central Street  
East Bridgewater MA

Photographer: Wilmar Armer Jan. 1991

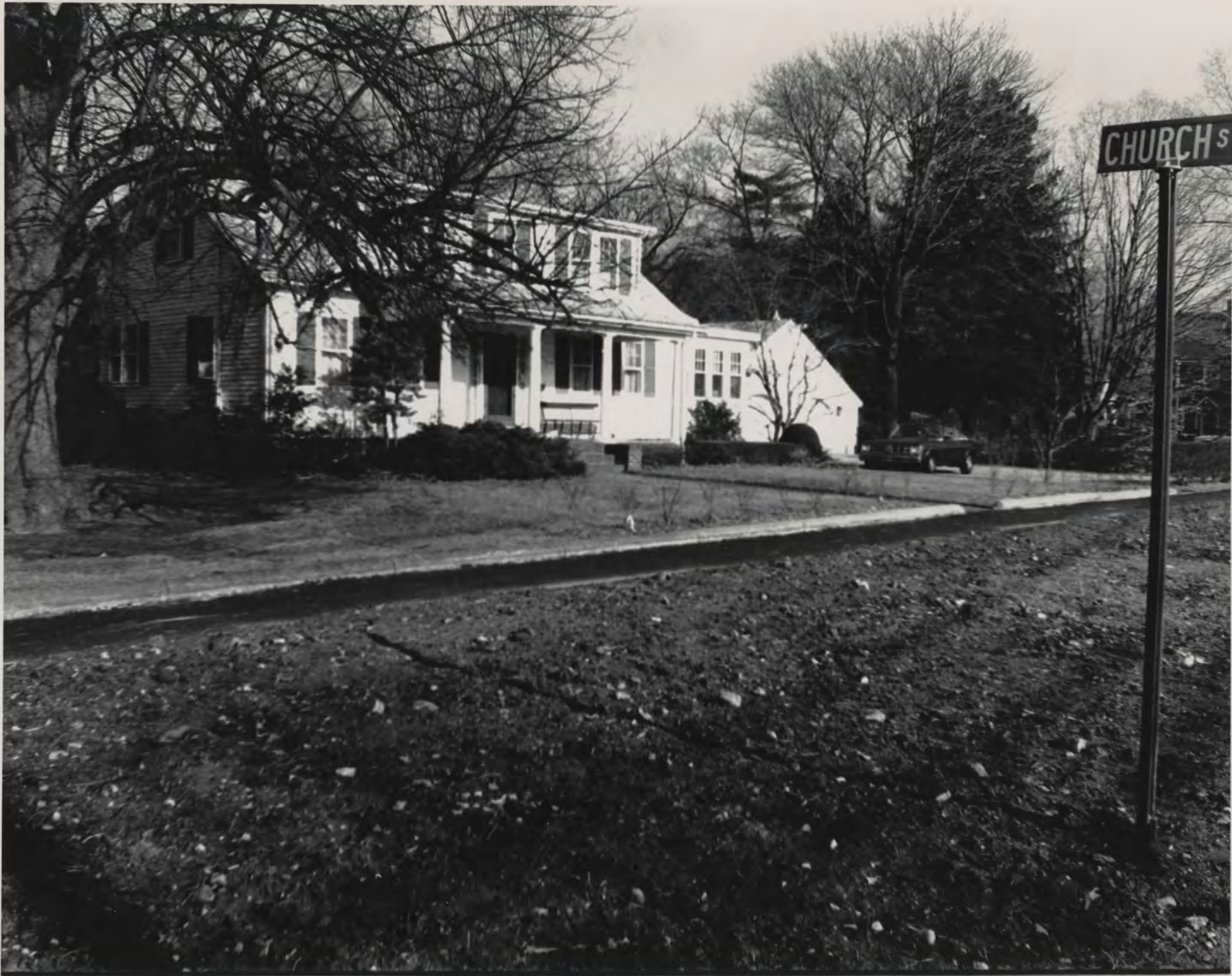
Negative: Historical Commission Files

Photograph No. 21 Set A II

View: Showing the Dr. Orr House situated  
between St. John's and First Parish churches

Photo # 3 of 13

Map location G 27 and 24



Branch Bryam House

254 Central Street  
East Bridgewater MA

Photographer: Wilmar Armer Jan. 91

Negative Historical Commission Files

Photograph no. 9 of Set A1

View: From corner of First Parish Church  
showing Church Street, part of site of  
an ancient Indian trail to Weymouth and  
Boston area.

Photo # 4 of 13

Map location #23



Old Graveyard  
opposite 137-175 Central Street (180 Central)

East Bridgewater MA

Photographer: Wilmar Armer

Negative: Historical Commission

Photograph: No 0 of Set IA

View: 18<sup>th</sup> century cut stonewall and  
of second oldest graveyard  
in Old Bridgewater - looking from  
Spanish War Memorial.

Photo # 5 of 13

Map location # 29



Samuel G. Alden Sr. House  
33 Plymouth Street  
East Bridgewater MA.

Photographer: Wilmar Armer Jan. 1991  
Negative Historical Commission Files  
Photograph No 23 Set A II

View: Looking south from Common  
showing Civil War Monument

Photo #6 of 13  
Map Location #4



Millet-Bartlett House (William-Latham House)  
48 Plymouth Street  
East Bridgewater, MA.

Photographer: Wilmar Armer Jan. 91

Negative: Historical Files

Photograph No 35 Set III A

View: looking from Common across  
Morse Avenue to House

Photo # 7 of 13

Map location (6)



Lewis Keith House  
274 Central street  
East Bridgewater MA

Photographer: Wilmar ARMER Jan. 1991

Historical Commission Files

Photograph No. 8 Set AIII

View: Looking toward First Parish Church

Photo # 8 of 13

Map location # (22)



Property Name: Levi Churchill

298 Central Street

East Bridgewater MA

Photographer: Wilmar Armer Jan 1991

Negative Historical Commission File

Photograph no. 06 of A111

Description of View: Looking northwest  
on Central Street

Photo #9 of 13

Map Location (19)



Noyes - Kingman House

329 Central Street

East Bridgewater MA

Photographer: Wilmar Armer Jan. 91

Negative Historical Commission File

Photograph No. 11 Set A III

View: Looking East toward Spear Avenue  
showing historical Morse and Strong  
houses.

Photo # 10 of 13

Map Location (9)



Joseph Strong House (First Parish Parsonage)  
353 Central Street  
East Bridgewater MA

Photographer: Wilmar Armer Jan 91

Negative: Historical Commission Files  
Photograph No. 19 Set IA

View: Looking East from Spear Avenue

Photo #11 of 13

Map Location (11)



Clarence Chandler House

344 Central Street

East Bridgewater MA

Photographer: Wilmar Armer Jan. 91

Negative Historical Commission Files

Photograph No 16 Set IA

View: looking NorthE. toward 1854 First

Parish Parsonage

Photo # 12 of 13

Map Location of (16)



Honorable Aaron Hobart House  
175 Central Street  
East Bridgewater MA

Photographer: Wilmar Armer Jan 91

Negative: Historical Commission Files

Photograph no. 6 Set 4 II

View: Original portion of house.

Photo #13 of 13

Map Location (3)



East Bridgewater Common Historic District  
Plymouth Co, MA

Photo 14



East Bridgewater Common Historic District  
Plymouth Co, MA

Photo 15



East Bridgewater Common Historic District  
Plymouth Co, MA

Photo 16



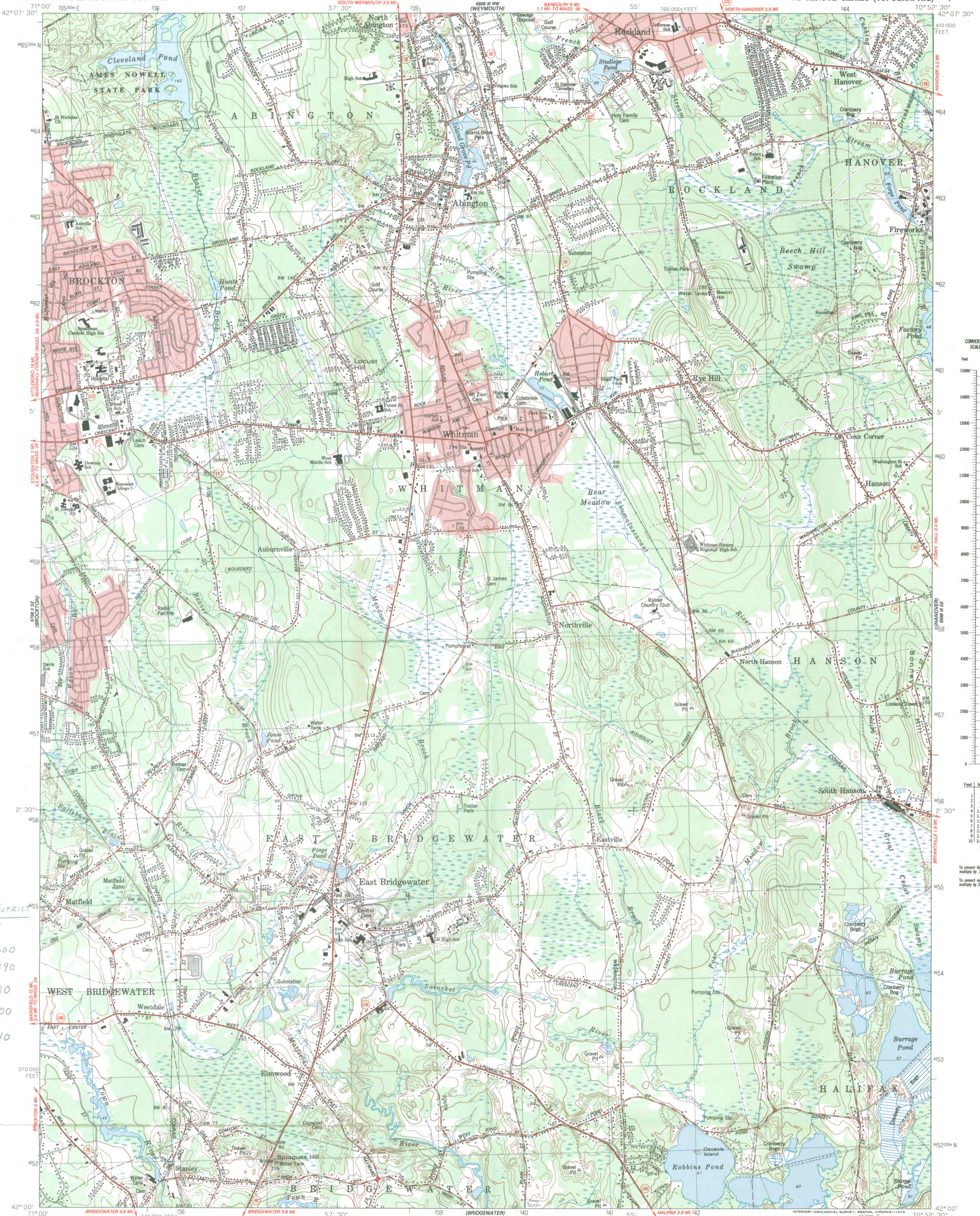
East Bridgewater Common Historic District  
Plymouth Co, MA

Photo 17



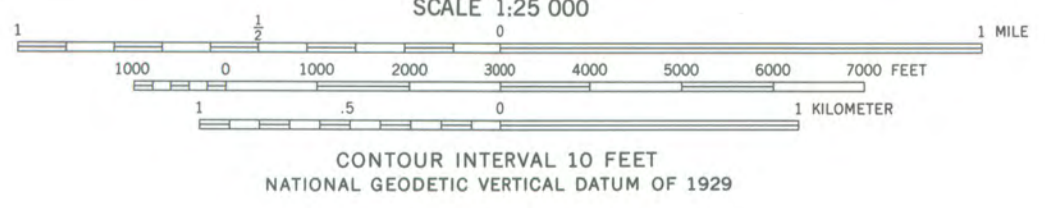
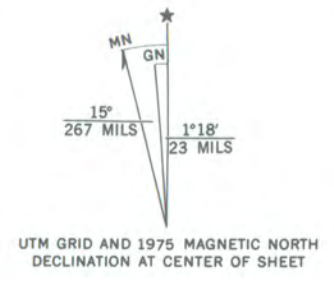
East Bridgewater Common Historic District  
Plymouth Co, MA

Photo 18



EAST BRIDGEWATER  
Common HISTORIC DISTRICT  
East Bridgewater,  
Plymouth Co., MA  
1 19/337920/4654600  
2 19/338150/4654390  
3 19/338800/4654580  
4 19/338680/4655000  
5 19/338120/4654910

Maped, edited, and published by the Geological Survey  
Control by USGS, NOS/NOAA, and Massachusetts Geodetic Survey  
Planimetry by photogrammetric methods from aerial photographs  
Topography by planetable surveys 1935-1936.  
Revised from aerial photographs taken 1974. Field checked 1975  
Polyconic projection, 1927 North American datum  
10,000-foot grid ticks based on Massachusetts coordinate system,  
mainland zone  
1000-meter Universal Transverse Mercator grid,  
zone 19  
Red tint indicates areas in which only landmark buildings are shown



ROAD CLASSIFICATION  
Primary highway, hard surface  
Secondary highway, hard surface  
Light-duty road, hard or improved surface  
Unimproved road  
Interstate Route  
U.S. Route  
State Route



THIS MAP COMPLIES WITH NATIONAL MAP ACCURACY STANDARDS  
FOR SALE BY U.S. GEOLOGICAL SURVEY, RESTON, VIRGINIA 22092  
A FOLDER DESCRIBING TOPOGRAPHIC MAPS AND SYMBOLS IS AVAILABLE ON REQUEST

WHITMAN, MASS.  
N4200—W7052.5/7.5  
1977  
AMS 6868 III SW—SERIES V814







NOTE- This plan to be used for assessing purposes only.  
Scale: 1"=80'  
March 1981

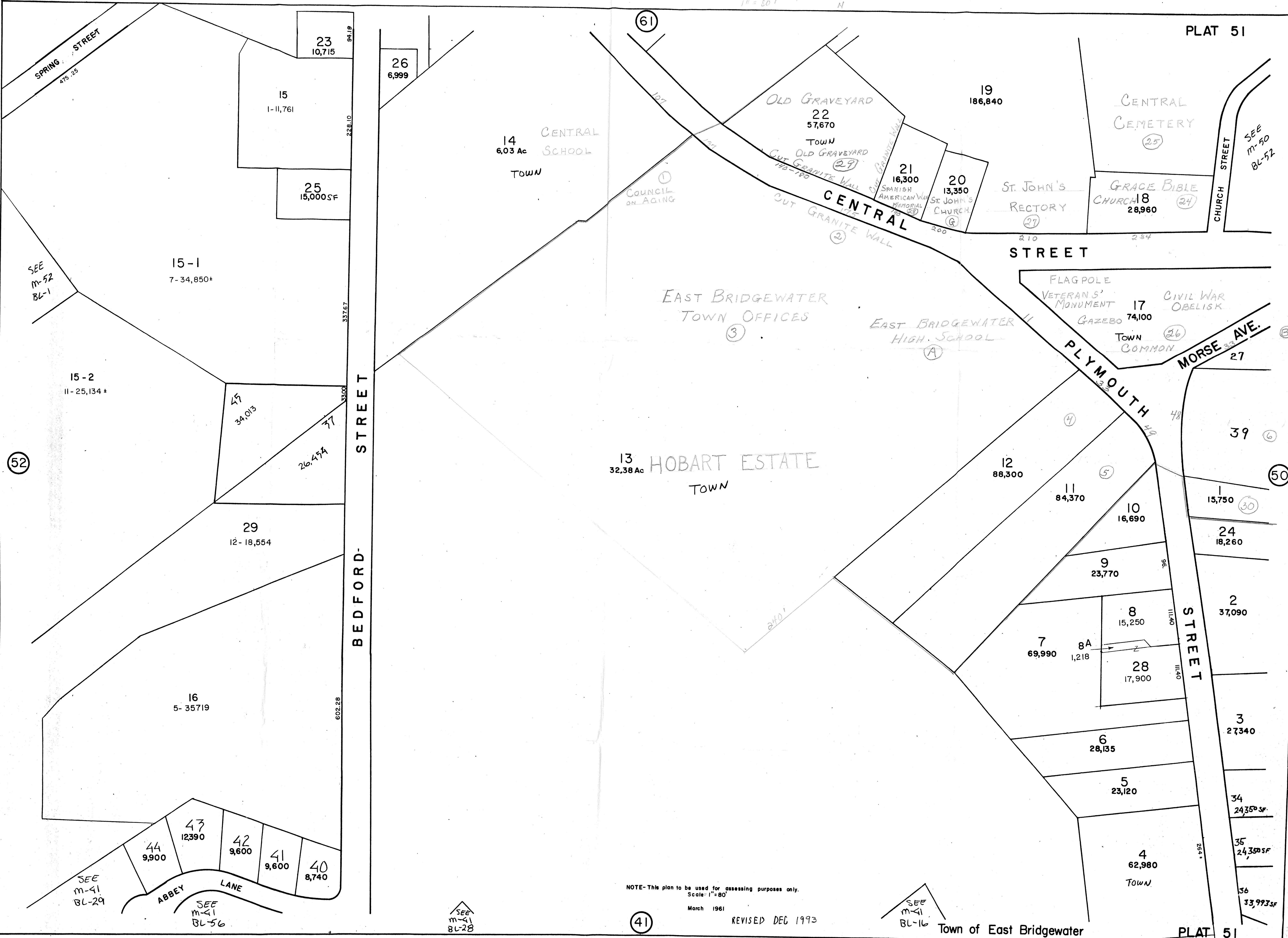
REVISED DEC 1993

Town of East Bridgewater

PLAT 50



East Bridgewater Common Historic District  
East Bridgewater, Plymouth Co, MA  
Assessor's Map #51  
1" = 80'



PLAT 51

PLAT 51

NOTE- This plan to be used for assessing purposes only.  
Scale: 1" = 80'  
March 1961

REVISED DEC 1993

Town of East Bridgewater

(41)

SEE  
M-16  
BL-16

SEE  
M-41  
BL-28

SEE  
M-41  
BL-29

SEE  
M-41  
BL-56

SEE  
M-52  
BL-1

SEE  
M-50  
BL-52

(50)

(52)

(5)

(6)

(30)

(2)

(3)

(34)

(35)

(36)

(25)

(24)

(27)

(26)

(27)

(4)

(5)

(10)

(8)

(28)

(6)

(5)

(4)

CENTRAL  
STREET

STREET

PLYMOUTH  
STREET

MORSE AVE.

BEDFORD  
STREET

STREET

SPRING  
STREET

CENTRAL  
SCHOOL  
TOWN

EAST BRIDGEWATER  
TOWN OFFICES

EAST BRIDGEWATER II  
HIGH SCHOOL

HOBART ESTATE  
TOWN

OLD GRAVEYARD

OLD GRAVEYARD

CENTRAL  
CEMETERY

GRACE BIBLE  
CHURCH

ST. JOHN'S  
RECTORY

FLAGPOLE  
VETERANS'  
MONUMENT

CIVIL WAR  
OBELISK

TOWN  
COMMON

COUNCIL  
ON AGING

SPANISH  
AMERICAN WAR  
MEMORIAL

ST. JOHN'S  
CHURCH

15-1  
7-34,850±

15-2  
11-25,134±

29  
12-18,554

16  
5-35,719

44  
9,900

43  
12,390

42  
9,600

41  
9,600

40  
8,740

45  
34,013

37  
26,454

29

16

43

42

41

40

23

15

25

26

21

20

19

22

29

20

20

20

20

20

20

20

20

20

20

20

20

20

20

20

20

20

20

20

20

20

20

20

20

20

20

(61)

(50)

(2)

(3)

(34)

(35)

(36)

(25)

(24)

(27)

(26)

(27)

(4)

(5)

(10)

(8)

(28)

(6)

(5)

(4)

CENTRAL  
STREET

STREET

PLYMOUTH  
STREET

MORSE AVE.

BEDFORD  
STREET

STREET

SPRING  
STREET

CENTRAL  
SCHOOL  
TOWN

EAST BRIDGEWATER  
TOWN OFFICES

EAST BRIDGEWATER II  
HIGH SCHOOL

HOBART ESTATE  
TOWN

OLD GRAVEYARD

OLD GRAVEYARD

CENTRAL  
CEMETERY

GRACE BIBLE  
CHURCH

ST. JOHN'S  
RECTORY

FLAGPOLE  
VETERANS'  
MONUMENT

CIVIL WAR  
OBELISK

TOWN  
COMMON

COUNCIL  
ON AGING

SPANISH  
AMERICAN WAR  
MEMORIAL

ST. JOHN'S  
CHURCH

15-1  
7-34,850±

15-2  
11-25,134±

29  
12-18,554

16  
5-35,719

44  
9,900

43  
12,390

42  
9,600

41  
9,600

40  
8,740

45  
34,013

37  
26,454

29

16

43

42

41

40

23

15

25

26

21

20

19

22

29

20

20

20

20

20

20

20

20

20

20

20

20

20

20

20

20

20

20

20

20

20

20

20

20

20

20

(61)

(50)

(2)

(3)

(34)

(35)

(36)

(25)

(24)

(27)

(26)

(27)

(4)

(5)

(10)

(8)

(28)

(6)

(5)

(4)

CENTRAL  
STREET

STREET

PLYMOUTH  
STREET

MORSE AVE.

BEDFORD  
STREET

STREET

SPRING  
STREET

CENTRAL  
SCHOOL  
TOWN

EAST BRIDGEWATER  
TOWN OFFICES

EAST BRIDGEWATER II  
HIGH SCHOOL

HOBART ESTATE  
TOWN

OLD GRAVEYARD

OLD GRAVEYARD

CENTRAL  
CEMETERY

GRACE BIBLE  
CHURCH

ST. JOHN'S  
RECTORY

FLAGPOLE  
VETERANS'  
MONUMENT

CIVIL WAR  
OBELISK

TOWN  
COMMON

COUNCIL  
ON AGING

SPANISH  
AMERICAN WAR  
MEMORIAL

ST. JOHN'S  
CHURCH

15-1  
7-34,850±

15-2  
11-25,134±

29  
12-18,554

16  
5-35,719

44  
9,900

43  
12,390

42  
9,600

41  
9,600

40  
8,740

45  
34,013

37  
26,454

29

16

43

42

41

40

23

15

25

26

21

20

19

22

29

20

20

20

20

20

20

20

20

20

20

20

20

20

20

20

20

20

20

20

20

20

20

20

20

20

20

(61)

(50)

(2)

(3)

(34)

(35)

(36)

(25)

(24)

(27)

(26)

(27)

(4)

(5)

(10)

(8)

(28)

(6)

(5)

(4)

CENTRAL  
STREET

STREET

PLYMOUTH  
STREET

MORSE AVE.

BEDFORD  
STREET

STREET

SPRING  
STREET

CENTRAL  
SCHOOL  
TOWN

EAST BRIDGEWATER  
TOWN OFFICES

EAST BRIDGEWATER II  
HIGH SCHOOL



NOTE.- This plan to be used for assessing purposes only.  
 Scale 1"=80'  
 October 1962

REVISED DEC 1975

East Bridgewater Common Historic District  
 East Bridgewater, Plymouth Co., MA  
 Assessor's Map #60  
 1"=80'

Town of East Bridgewater



NOTE- This plan to be used for assessing purposes only. Scale 1"=80'

October 1962

Town of East Bridgewater REVISED DEC 1995 PLAT 61

East Bridgewater Common Historic District  
East Bridgewater, Plymouth Co., MA  
Assessor's Map #61  
1"=80'



**The Commonwealth of Massachusetts**  
William Francis Galvin, Secretary of the Commonwealth  
Massachusetts Historical Commission

April 6, 1999

Ms. Carol Shull  
National Register of Historic Places  
Department of the Interior  
National Park Service  
Mail Stop 2280, Suite 400  
1849 C Street, NW  
Washington, DC 20240

Dear Ms. Shull:

Enclosed please find the following nomination form:

East Bridgewater Common Historic District, East Bridgewater (Plymouth Co.), MA

The nomination has been voted eligible by the State Review Board and has been signed by the State Historic Preservation Officer. The owners of the properties included in the district were notified of pending State Review Board consideration 30 to 45 days before the meeting and were afforded the opportunity to comment.

Sincerely,

A handwritten signature in cursive script that reads "Betsy Friedberg".

Betsy Friedberg  
National Register Director  
Massachusetts Historical Commission

enclosure

cc: Wilmar Armer, Chair, East Bridgewater Historical Commission  
Margo Webber, Preservation Consultant  
Anthony Costello, Chair, East Bridgewater Board of Selectmen  
Roy Gardner, Chair, East Bridgewater Planning Board