



Envoy

TOWN
PHARMACY
PRESCRIPTIONS

Unleaded
76 ⁹/₁₀
Mini Serve Gasoline

Regular
74 ⁹/₁₀
Mini Serve Gasoline

WILSON'S

PG&E

The Envoy Apartments
2336 SW Osage
Portland, Multnomah County, Oregon

Description: North elevation

Heritage Investment Corporation
123 NW Second Avenue, Suite 200
Portland, Multnomah County, Oregon 97209

Dale Archer Photography 1986 photo

Photo 1 of 25



The Envoy Apartments
2336 SW Osage
Portland, Multnomah County, Oregon

Description: Stair, north elevation

Heritage Investment Corporation
123 NW Second Avenue, Suite 200
Portland, Multnomah County, Oregon 97209

Dale Archer Photography 1986 photo

Photo 2 of 25



The Envoy Apartments
2336 SW Osage
Portland, Multnomah County, Oregon

Description: Second floor balcony, north elevation

Heritage Investment Corporation
123 NW Second Avenue, Suite 200
Portland, Multnomah County, Oregon 97209

Dale Archer Photography 1986 photo

Photo 3 of 25



The Envoy Apartments
2336 SW Osage
Portland, Multnomah' County, Oregon

Description: First floor lobby entry, north elevation

Heritage Investment Corporation
123 NW Second Avenue, Suite 200
Portland, Multnomah County, Oregon 97209

Dale Archer Photography 1986 photo

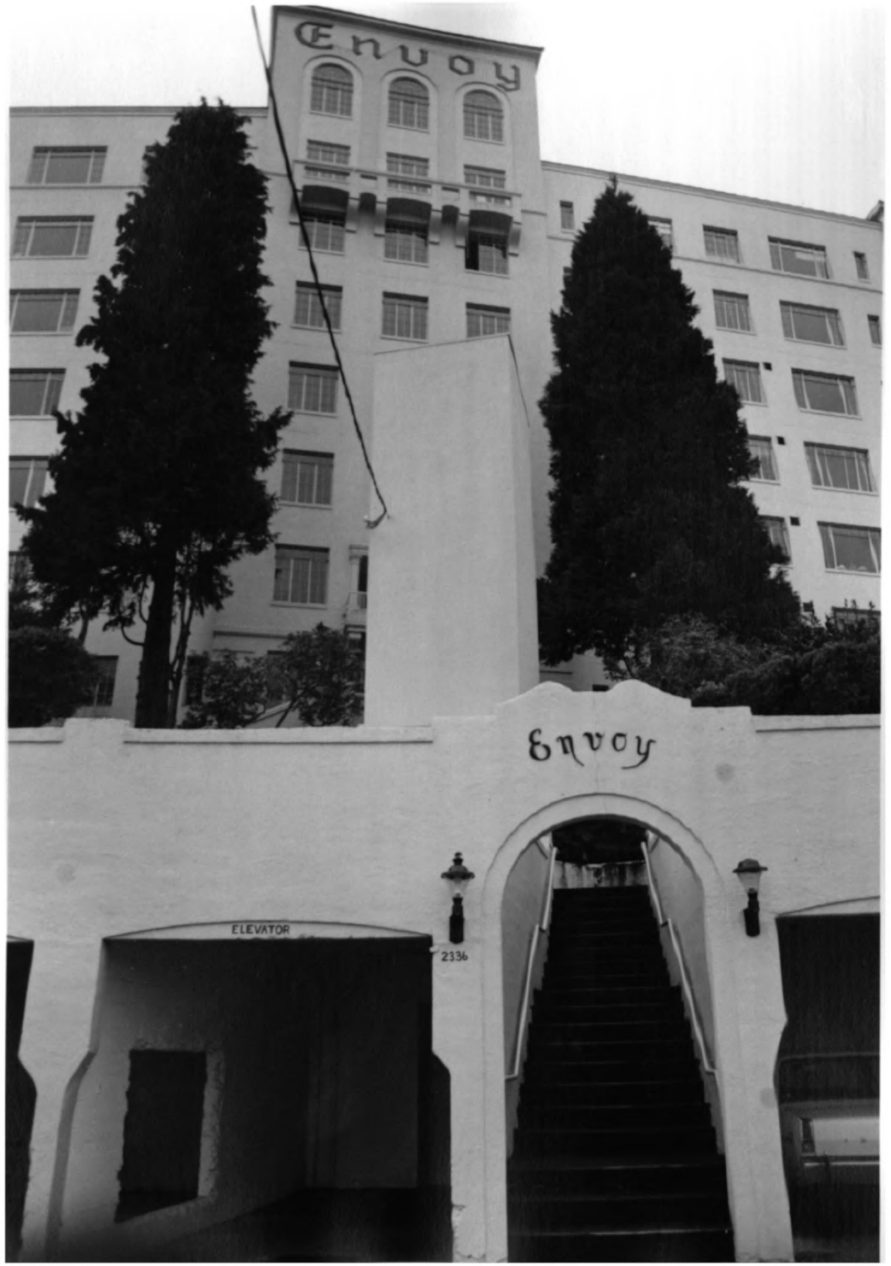
Photo 4 of 25

ENVUOY

ENVUOY

ELEVATOR

2336



The Envoy Apartments

2336 SW Osage

Portland, Multnomah County, Oregon

Description: Entry, north elevation

Heritage Investment Corporation

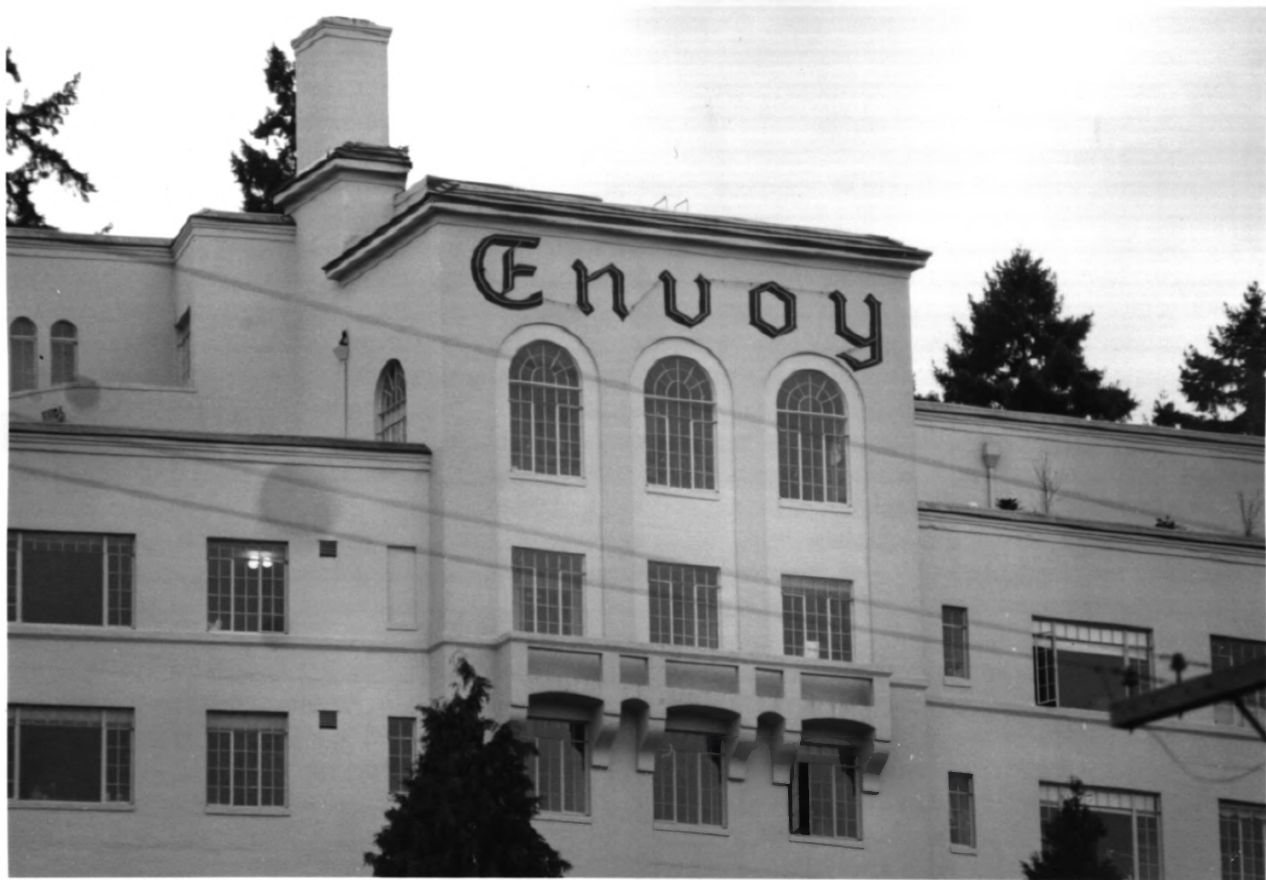
123 NW Second Avenue, Suite 200

Portland, Multnomah County, Oregon 97209

Dale Archer Photography 1986 photo

Photo 5 of 25

Envoy



The Envoy Apartments
2336 SW Osage
Portland, Multnomah County, Oregon

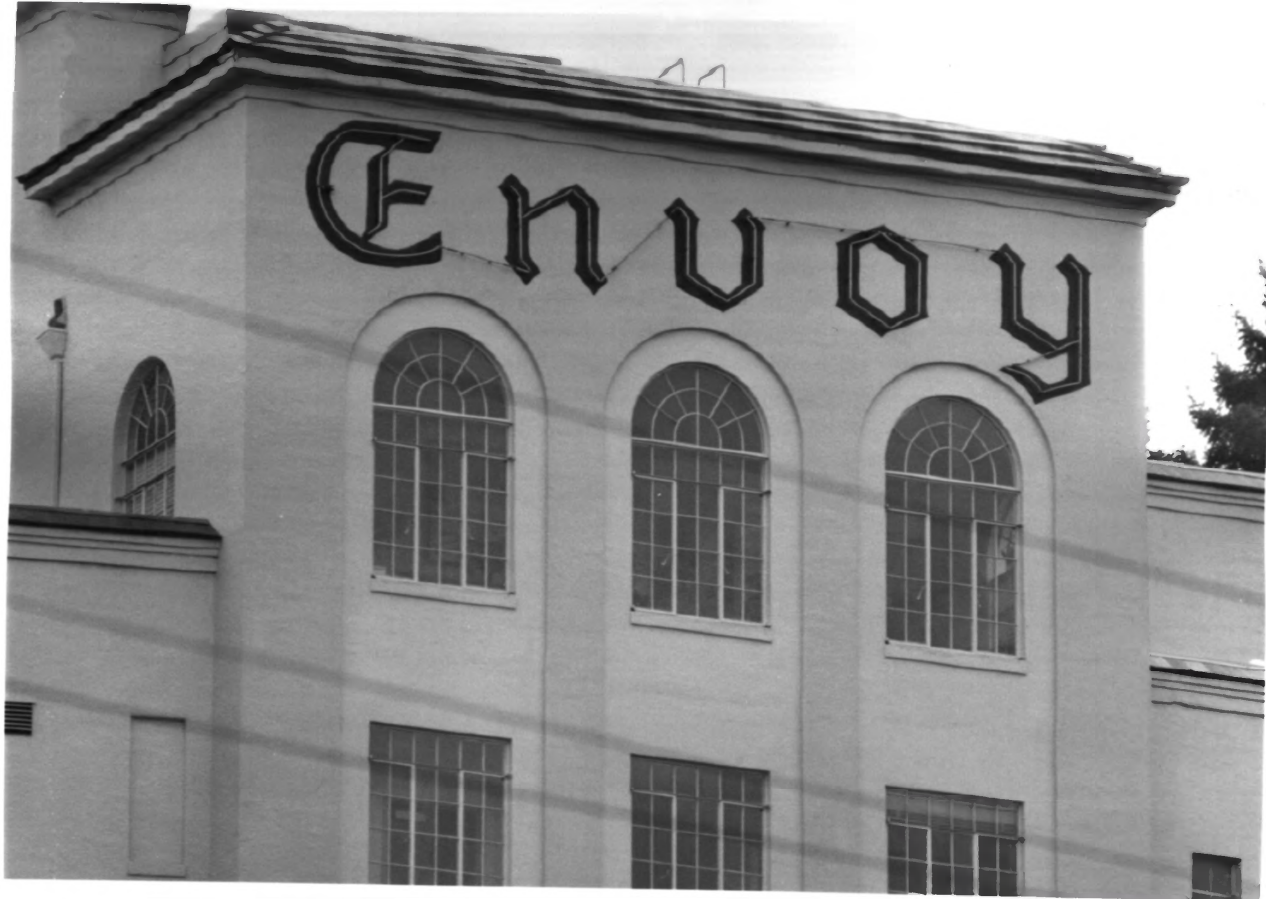
Description: North elevation

Heritage Investment Corporation
123 NW Second Avenue, Suite 200
Portland, Multnomah County, Oregon 97209

Dale Archer Photography 1986 photo

Photo 6 of 25

Envoy



The Envoy Apartments
2336 SW Osage
Portland, Multnomah County, Oregon

Description: Detail, north elevation

Heritage Investment Corporation
123 NW Second Avenue, Suite 200
Portland, Multnomah County, Oregon 97209

Dale Archer Photography 1986 photo

Photo 7 of 25



The Envoy Apartments
2336 SW Osage
Portland, Multnomah County, Oregon

Description: West elevation

Heritage Investment Corporation
123 NW Second Avenue, Suite 200
Portland, Multnomah County, Oregon 97209

Dale Archer Photography 1986 photo

Photo 8 of 25



The Envoy Apartments
2336 SW Osage
Portland, Multnomah County, Oregon

Description: South elevation

Heritage Investment Corporation
123 NW Second Avenue, Suite 200
Portland, Multnomah County, Oregon 97209

Dale Archer Photography 1986 photo

Photo 9 of 25



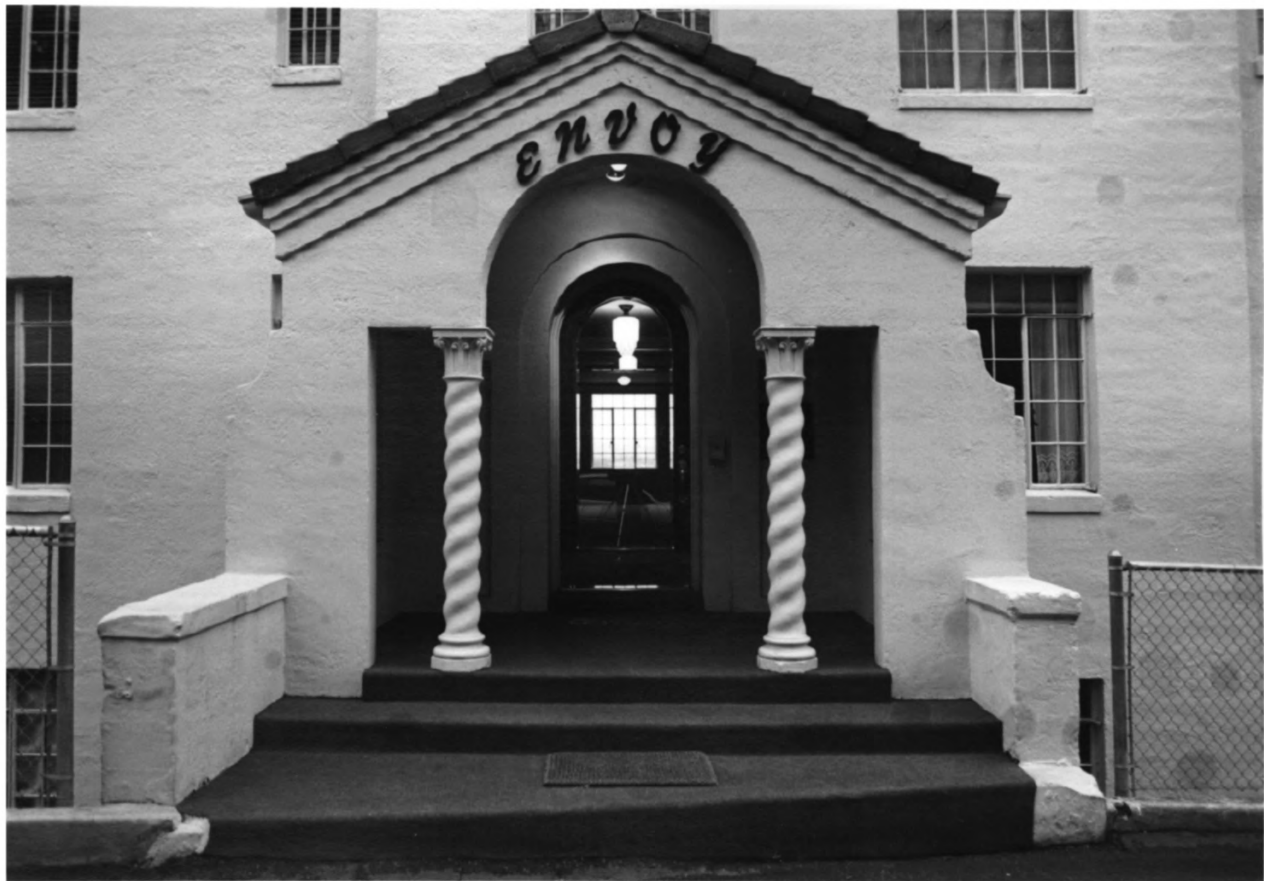
The Envoy Apartments
2336 SW Osage
Portland, Multnomah County, Oregon

Description: Southeast corner

Heritage Investment Corporation
123 NW Second Avenue, Suite 200
Portland, Multnomah County, Oregon 97209

Dale Archer Photography 1986 photo

Photo 10 of 25



The Envoy Apartments
2336 SW Osage
Portland, Multnomah County, Oregon

Description: South elevation

Heritage Investment Corporation
123 NW Second Avenue, Suite 200
Portland, Multnomah County, Oregon 97209

Dale Archer Photography 1986 photo

Photo 11 of 25



The Envoy Apartments
2336 SW Osage
Portland, Multnomah County, Oregon

Description: Penthouse deck, looking west

Heritage Investment Corporation
123 NW Second Avenue, Suite 200
Portland, Multnomah County, Oregon 97209

Dale Archer Photography 1986 photo

Photo 12 of 25



The Envoy Apartments

2336 SW Osage

Portland, Multnomah County, Oregon

Description: Penthouse deck, looking east

Heritage Investment Corporation

123 NW Second Avenue, Suite 200

Portland, Multnomah County, Oregon 97209

Dale Archer Photography 1986 photo

Photo 13 of 25



The Envoy Apartments
2336 SW Osage
Portland, Multnomah County, Oregon

Description: Entry, window detail

Heritage Investment Corporation
123 NW Second Avenue, Suite 200
Portland, Multnomah County, Oregon 97209

Dale Archer Photography 1986 photo

Photo 14 of 25



The Envoy Apartments
2336 SW Osage
Portland, Multnomah County, Oregon

Description: First floor lobby

Heritage Investment Corporation
123 NW Second Avenue, Suite 200
Portland, Multnomah County, Oregon 97209

Dale Archer Photography 1986 photo

Photo 15 of 25



The Envoy Apartments
2336 SW Osage
Portland, Multnomah County, Oregon.

Description: First floor lobby

Heritage Investment Corporation
123 NW Second Avenue, Suite 200
Portland, Multnomah County, Oregon 97209

Dale Archer Photography 1986 photo

Photo 14 of 25



The Envoy Apartments
2336 SW Osage
Portland, Multnomah County, Oregon

Description: Fifth floor entry lobby, south elevation

Heritage Investment Corporation
123 NW Second Avenue, Suite 200
Portland, Multnomah County, Oregon 97209

Dale Archer Photography 1986 photo

Photo 17 of 25



The Envoy Apartments
2336 SW Osage
Portland, Multnomah County, Oregon

Description: Second floor hallway

Heritage Investment Corporation
123 NW Second Avenue, Suite 200
Portland, Multnomah County, Oregon 97209

Dale Archer Photography 1986 photo

Photo 18 of 25



The Envoy Apartments
2336 SW Osage
Portland, Multnomah County, Oregon

Description: Second floor door to balcony

Heritage Investment Corporation
123 NW Second Avenue, Suite 200
Portland, Multnomah County, Oregon 97209

Dale Archer Photography 1986 photo

Photo 19 of 25

A black and white photograph of a wooden door. The door has a vertical wood grain and a rectangular panel design. In the center of the door, there is a small, dark rectangular sign with the number "506" in white. Below the sign is a decorative metal knocker with a crest-like design. To the left of the door, a portion of a metal doorknob is visible. The door is set in a white frame, and the floor is made of wood with a herringbone pattern. The lighting is dramatic, with strong shadows and highlights.

506

The Envoy Apartments
2336 SW Osage
Portland, Multnomah County, Oregon

Description: Typical apartment door

Heritage Investment Corporation
123 NW Second Avenue, Suite 200
Portland, Multnomah County, Oregon 97209

Dale Archer Photography 1986 photo

Photo 20 of 25



The Envoy Apartments

2336 SW Osage

Portland, Multnomah County, Oregon

Description: Fifth floor, living room and entry

Heritage Investment Corporation

123 NW Second Avenue, Suite 200

Portland, Multnomah County, Oregon 97209

Dale Archer Photography 1986 photo

Photo 21 of 25



The Envoy Apartments
2336 SW Osage
Portland, Multnomah County, Oregon

Description: Fifth floor apartment, living room and dining room

Heritage Investment Corporation
123 NW Second Avenue, Suite 200
Portland, Multnomah County, Oregon 97209

Dale Archer Photography 1986 photo

Photo 22 of 25



The Envoy Apartments
2336 SW Osage
Portland, Multnomah County, Oregon

Description: Penthouse entry

Heritage Investment Corporation
123 NW Second Avenue, Suite 200
Portland, Multnomah County, Oregon 97209

Dale Archer Photography 1986 photo

Photo 23 of 25



The Envoy Apartments
2336 SW Osage
Portland, Multnomah County, Oregon

Description: Penthouse living room

Heritage Investment Corporation
123 NW Second Avenue, Suite 200
Portland, Multnomah County, Oregon 97209

Dale Archer Photography 1986 photo

Photo 24 of 25



The Envoy Apartments
2336 SW Osage
Portland, Multnomah County, Oregon

Description: Solarium for penthouse

Heritage Investment Corporation
123 NW Second Avenue, Suite 200
Portland, Multnomah County, Oregon 97209

Dale Archer Photography 1986 photo

Photo 25 of 25