



Henry A. Swift House  
St. Peter, MN; Nicollet County  
Susan Roth  
1983

Minnesota Historical Society, 690

Cedar St., St. Paul, MN 55101

Looking northeast

05686/16a

FROM THE COLLECTIONS OF THE

MINNESOTA HISTORICAL SOCIETY

THIS MATERIAL IS FOR REFERENCE USE

ONLY. IT MAY NOT BE REPRODUCED OR

SOLD WITHOUT WRITTEN PERMISSION.

NOTICE: This material may be  
protected by copyright law  
(Title 17 U. S. Code)



Henry A. Swift House  
St. Peter, MN: Nicollet County  
Susan Roth  
1962  
MINNESOTA AVE.  
Minnesota Historical Society, 690  
Cedar St., St. Paul, MN 55101  
Looking Southwest  
05560/5a

FROM THE COLLECTIONS OF THE  
MINNESOTA HISTORICAL SOCIETY  
THIS PHOTOGRAPH IS FOR REFERENCE USE  
ONLY. IT MAY NOT BE REPRODUCED OR  
SOLD WITHOUT WRITTEN PERMISSION.

**NOTICE:** This material may be  
protected by copyright law  
(Title 17 U. S. Code)



Henry A. Swift House

St. Peter, MN; Nicollet County

Photographer: unknown

Date of photo: ca.1864

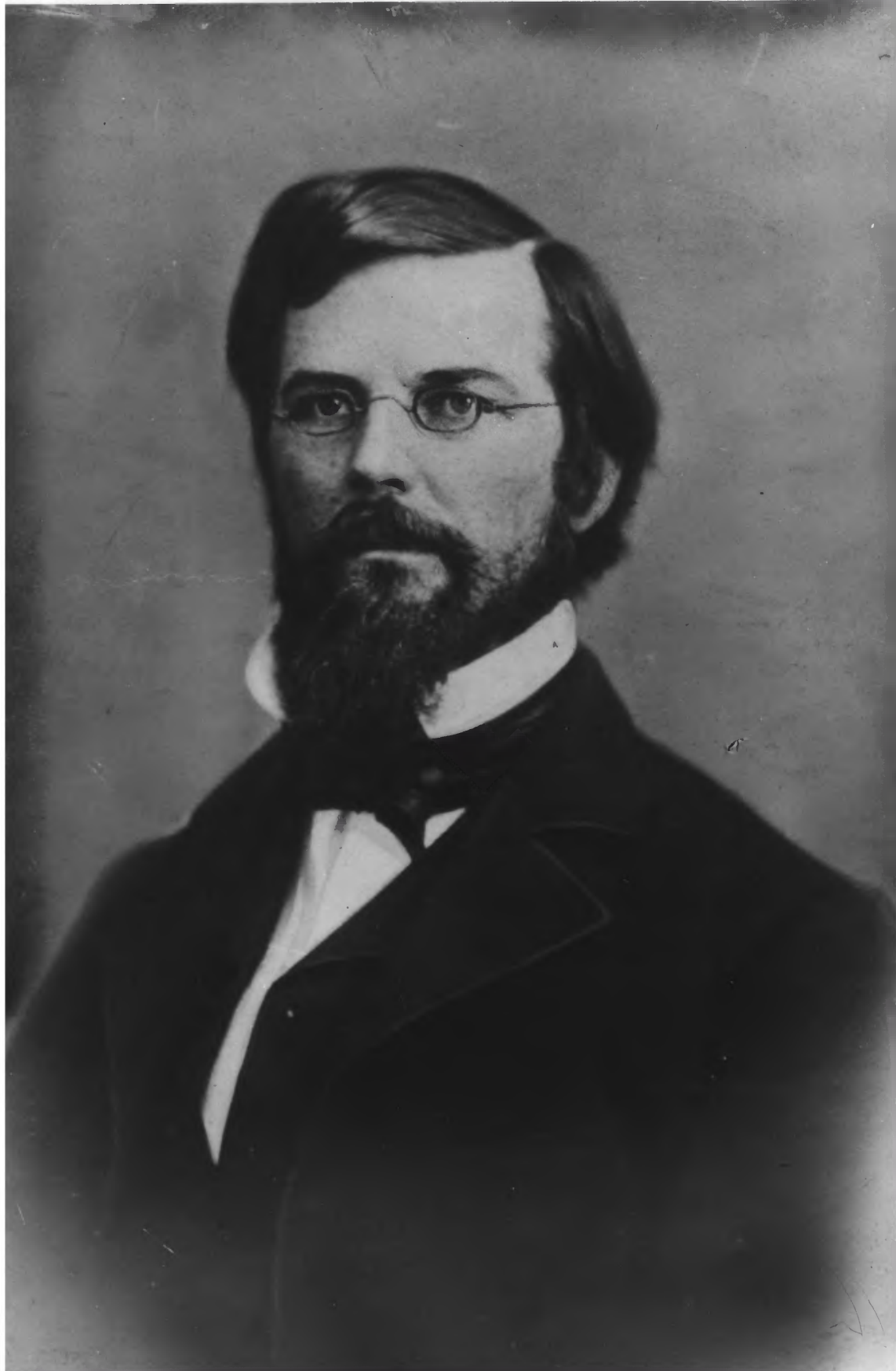
Minnesota Historical Society, 690

Cedar St., St. Paul, MN 55101

Looking southwest

39288





Swift, Henry A.

Henry A. Swift House  
St. Peter, MN; Nicollet County  
Photographer: unknown  
Date of photo: unknown  
Minnesota Historical Society, 690  
Cedar St., St. Paul, MN 55101  
N/A  
no contact number

FROM THE COLLECTIONS OF THE  
MINNESOTA HISTORICAL SOCIETY  
THIS PHOTOGRAPH IS FOR REFERENCE USE  
ONLY. IT MAY NOT BE REPRODUCED OR  
SOLD WITHOUT WRITTEN PERMISSION.

NOTICE: This material may be  
protected by copyright law  
(Title 17 U. S. Code)