



UNITED STATES DEPARTMENT OF THE INTERIOR
NATIONAL PARK SERVICE

NATIONAL REGISTER OF HISTORIC PLACES
PROPERTY PHOTOGRAPH FORM

(Type all entries - attach to or enclose with photograph)

STATE Hawaii	
COUNTY Hawaii	
FOR NPS USE ONLY	
ENTRY NUMBER JUN 7 1974	DATE

SEE INSTRUCTIONS

1. NAME

COMMON: **City of Refuge NHP-District**

AND/OR HISTORIC:

2. LOCATION

STREET AND NUMBER:

Twenty miles south of Kailua-Kona, at Honaunau

CITY OR TOWN:

Honaunau, Kona

STATE:

Hawaii

CODE

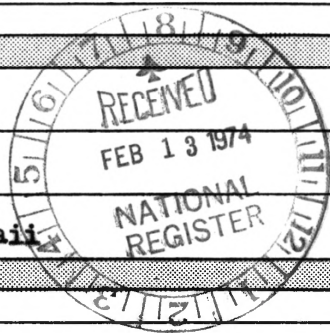
15

COUNTY:

Hawaii

CODE

001



3. PHOTO REFERENCE

PHOTO CREDIT: **National Park Service**

DATE OF PHOTO: **02/18/63**

NEGATIVE FILED AT:

#721 City of Refuge National Historical Park, Honaunau, Hawaii 96726

4. IDENTIFICATION

DESCRIBE VIEW, DIRECTION, ETC.

Aerial view of City of Refuge, looking north. In the foreground is Alahaka Bay and in the distance is Honaunau Bay. The north shore of Honaunau Bay, proposed for inclusion in the District, is clearly visible in the distance. The refuge area occupies the wave-lashed point in the center.



UNITED STATES DEPARTMENT OF THE INTERIOR
NATIONAL PARK SERVICE

NATIONAL REGISTER OF HISTORIC PLACES
PROPERTY PHOTOGRAPH FORM

(Type all entries - attach to or enclose with photograph)

STATE Hawaii	
COUNTY Hawaii	
FOR NPS USE ONLY	
ENTRY NUMBER JUN 7 1974	DATE

1. NAME

COMMON: City of Refuge NHP- District
AND/OR HISTORIC:

2. LOCATION

STREET AND NUMBER:

Twenty miles south of Kailua-Kona, at Honaunau

CITY OR TOWN:

Honaunau, Kona

STATE:

Hawaii

CODE

15

COUNTY:

Hawaii

CODE

001

3. PHOTO REFERENCE

PHOTO CREDIT: National Park Service

DATE OF PHOTO: 02/18/63

NEGATIVE FILED AT:

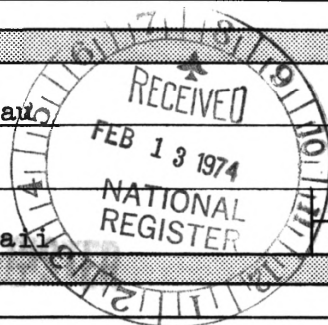
#728 City of Refuge National Historical Park, Honaunau, Hi. 96726

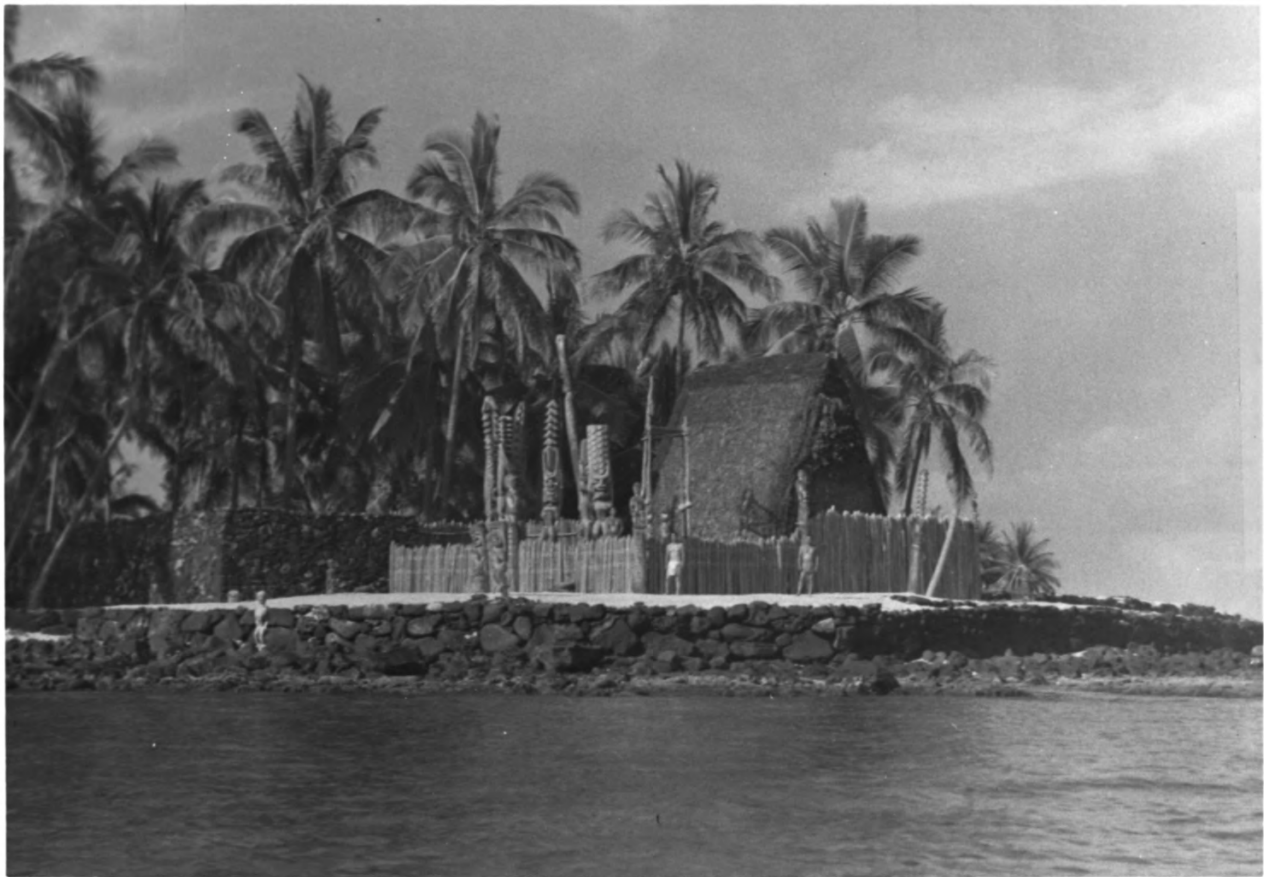
4. IDENTIFICATION

DESCRIBE VIEW, DIRECTION, ETC.

Aerial view of Keanaee Cliffs, looking northeast. The horse trail, ramp and cliff containing burial caves are visible. A heiau and numerous other archeological features (house sites, pens, butials, etc) are hidden under the vegetation between the cliff and the sea.

SEE INSTRUCTIONS





UNITED STATES DEPARTMENT OF THE INTERIOR
NATIONAL PARK SERVICE

NATIONAL REGISTER OF HISTORIC PLACES
PROPERTY PHOTOGRAPH FORM

(Type all entries - attach to or enclose with photograph)

STATE Hawaii	
COUNTY Hawaii	
FOR NPS USE ONLY	
ENTRY NUMBER JUN 7 1974	DATE

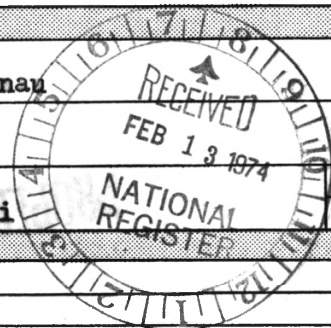
SEE INSTRUCTIONS

1. NAME

COMMON: City of Refuge National Historical Park-District
AND/OR HISTORIC:

2. LOCATION

STREET AND NUMBER:
Twenty miles south of Kailua-Kona, at Honaunau
CITY OR TOWN:
Honaunau, Kona
STATE: Hawaii CODE COUNTY: Hawaii CODE
15 Hawaii 001



3. PHOTO REFERENCE

PHOTO CREDIT: National Park Service
DATE OF PHOTO:
NEGATIVE FILED AT:
#2663 City of Refuge National Historical Park, Honaunau, Hawaii 96726

4. IDENTIFICATION

DESCRIBE VIEW, DIRECTION, ETC.
Looking southwest across Keone^ele cove toward the restored temple house of Hale-O-Keawe. Restoration as seen by Rev. William Ellis in 1823.



UNITED STATES DEPARTMENT OF THE INTERIOR
NATIONAL PARK SERVICE

NATIONAL REGISTER OF HISTORIC PLACES

PROPERTY PHOTOGRAPH FORM

(Type all entries - attach to or enclose with photograph)

STATE Hawaii	
COUNTY Hawaii	
FOR NPS USE ONLY	
ENTRY NUMBER JUN 7 1974	DATE

SEE INSTRUCTIONS

1. NAME

COMMON: City of Refuge National Historical Park-District

AND/OR HISTORIC:

2. LOCATION

STREET AND NUMBER:

Twenty miles south of Kailua-Kona, at Honaunau

CITY OR TOWN:

Honaunau, Kona

STATE:

Hawaii

CODE

15

COUNTY:

Hawaii

CODE

001

3. PHOTO REFERENCE

PHOTO CREDIT: National Park Service

DATE OF PHOTO: ca. 1963-64

NEGATIVE FILED AT:

#15 City of Refuge National Historical Park, Honaunau, Kona Hawaii 96726

4. IDENTIFICATION

DESCRIBE VIEW, DIRECTION, ETC.

Looking northwest along the top of the Great Wall during stabilization of the outside facing walls. Hale-O-Keawe site is at far end of wall.

