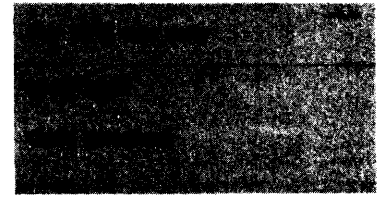


United States Department of the Interior  
National Park Service

National Register of Historic Places  
Inventory—Nomination Form

Pulaski County Multiple Resource  
Area, Kentucky



Continuation sheet

Item number

Page

Name: Burnside Lodge (PU-93)

Location: Burnside, KY

Owner: Burnside Lodge 634

Classification: Building

W. S. Tuggle  
Highway 80  
Somerset, KY 42501

Description: The Burnside Lodge is a one-story seven course common bond brick structure resting on a limestone foundation. The main facade facing the street is three bays in width with a projecting central tower containing the main entrance. The original door has been replaced on the main entryway but the original arched transom with stained glass is extant. Above the transom is brick relief arching with a stone keystone. A round stained glass window and datestone are featured above the entrance. Flanking the entrance on the main facade are tri-part one-over-one sash windows with jack arching and stone keystones. Windows on the remaining elevations are paired one-over-one sash with stone keystones. At the roofline is a corbelled brick cornice and stepped parapet.

Significance: The Burnside Lodge is one of the few remaining non-residential structures associated with the historic development of Burnside. A chapter of the masons was formed in Burnside in 1887 when the community was a thriving riverport of six hundred people. This permanent lodge building was erected in 1910 on a hill overlooking the center of the community. With the decline of the steamboat traffic on the river, Burnside began to lose its prominence in the county and the historic core of the community was flooded by the impoundment of Lake Cumberland. Through these years the Burnside Lodge has continued to serve the local chapter of masons and the original character of the building has been retained. The Burnside Lodge is a significant structure through its association with the original community.

Acreage: Approximately .25

Verbal Boundary Description: The boundary of the Burnside Lodge includes the entire 50' by 150' lot surrounding the building.

UTM References: (Burnside Quadrangle) 16/713540/4096020