



North side of Main Street, Waterford, Virginia

NPS Photo 1969



North side of Main Street, Waterford, Virginia



North side of Main Street, Waterford, Virginia

NPS Photo 1969



South side of Main Street, Waterford, Virginia

NPS Photo 1969



South side of Main Street, Waterford, Virginia

NPS Photo 1969



South side of Main Street, Waterford, Virginia

NPS Photo 1969



Country Store, Waterford, Virginia

NPS Photo 1969



Old Mill, Waterford, Virginia

NPS Photo 1969



Post Office, 2nd and Main Streets, Waterford, Virginia

NPS Photo 1969



East side of Second Street, Waterford, Virginia

NPS Photo 1969



West side of Second Street, Waterford, Virginia

NPS Photo 1969



Water and Main Streets, Waterford, Virginia

NPS Photo 1969

Photo 6B - 116.7 7/8/210



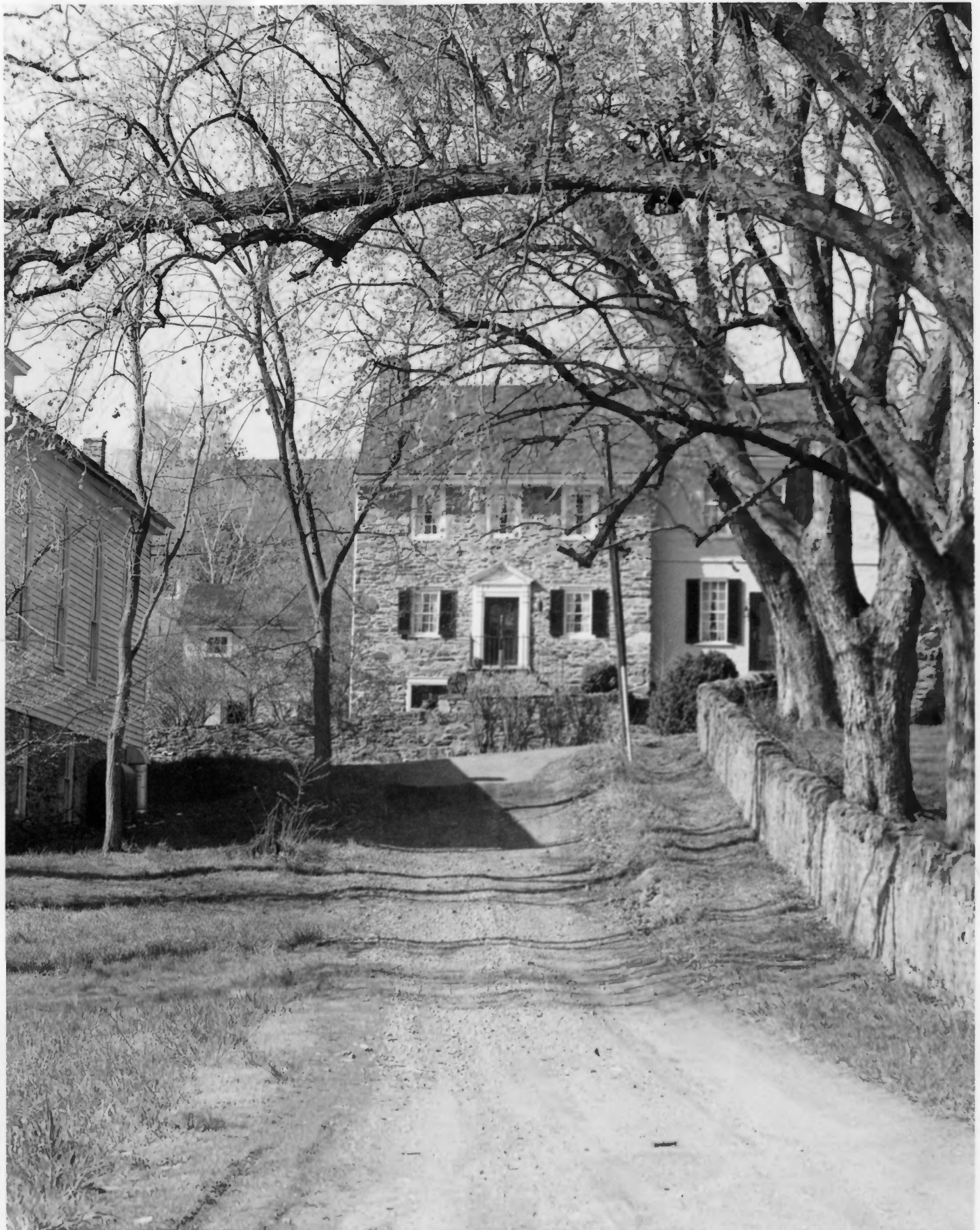
Looking south on 2nd Street from Main Street, Waterford, Virginia

NPS Photo 1969



First and Bond Streets, Waterford, Virginia

NPS Photo 1969

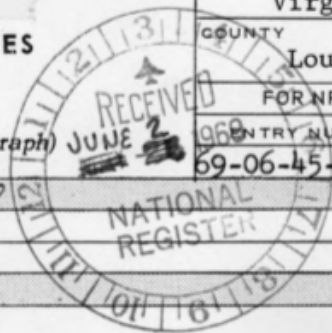


UNITED STATES DEPARTMENT OF THE INTERIOR
NATIONAL PARK SERVICE

NATIONAL REGISTER OF HISTORIC PLACES
PROPERTY PHOTOGRAPH FORM

(Type all entries - attach to or enclose with photograph)

STATE	Virginia
COUNTY	Loudoun
FOR NPS USE ONLY	
ENTRY NUMBER	DATE
69-06-45-0011	6/3/69



SEE INSTRUCTIONS

1. NAME

COMMON: Waterford ~~Preservation Zone~~ *Historic District*

AND/OR HISTORIC: Waterford

2. LOCATION

STREET AND NUMBER:

Route 665, 7 miles Northwest of Leesburg

CITY OR TOWN:

Waterford

STATE:

Virginia

CODE

45

COUNTY:

Loudoun

CODE

107

3. PHOTO REFERENCE

PHOTO CREDIT: Virginia Historic Landmarks Commission

DATE OF PHOTO: 1968

NEGATIVE FILED AT: Virginia Historic Landmarks Commission
Richmond, Virginia

4. IDENTIFICATION

DESCRIBE VIEW, DIRECTION, ETC.

Street Scene showing Samuel Means House (facing South on Bond Street)
and the Presbyterian Church (facing North on Bond Street).