



1. FEC Engine #153
2. 12400 S.W. 152nd Street, Miami  
(Dade County) Florida.
3. George Gerhart
4. 1984
5. George Gerhart
6. Engine #153 with train
7. Photo #1 of 8



1. FEC Engine #153
2. 12400 S.W. 152nd Street, Miami  
(Dade County) Florida
3. George Gerhart
4. 1984
5. George Gerhart
6. Engine #153 with Engine #113 in rear
7. Photo #2 of 8



1. FEC Engine #153
2. 12400 S.W. 152 Street, Miami  
(Dade County), Florida
3. George Gerhart
4. 1984
5. George Gerhart
6. Engine #153 with Engine #113 in rear
7. Photo #3 of 8

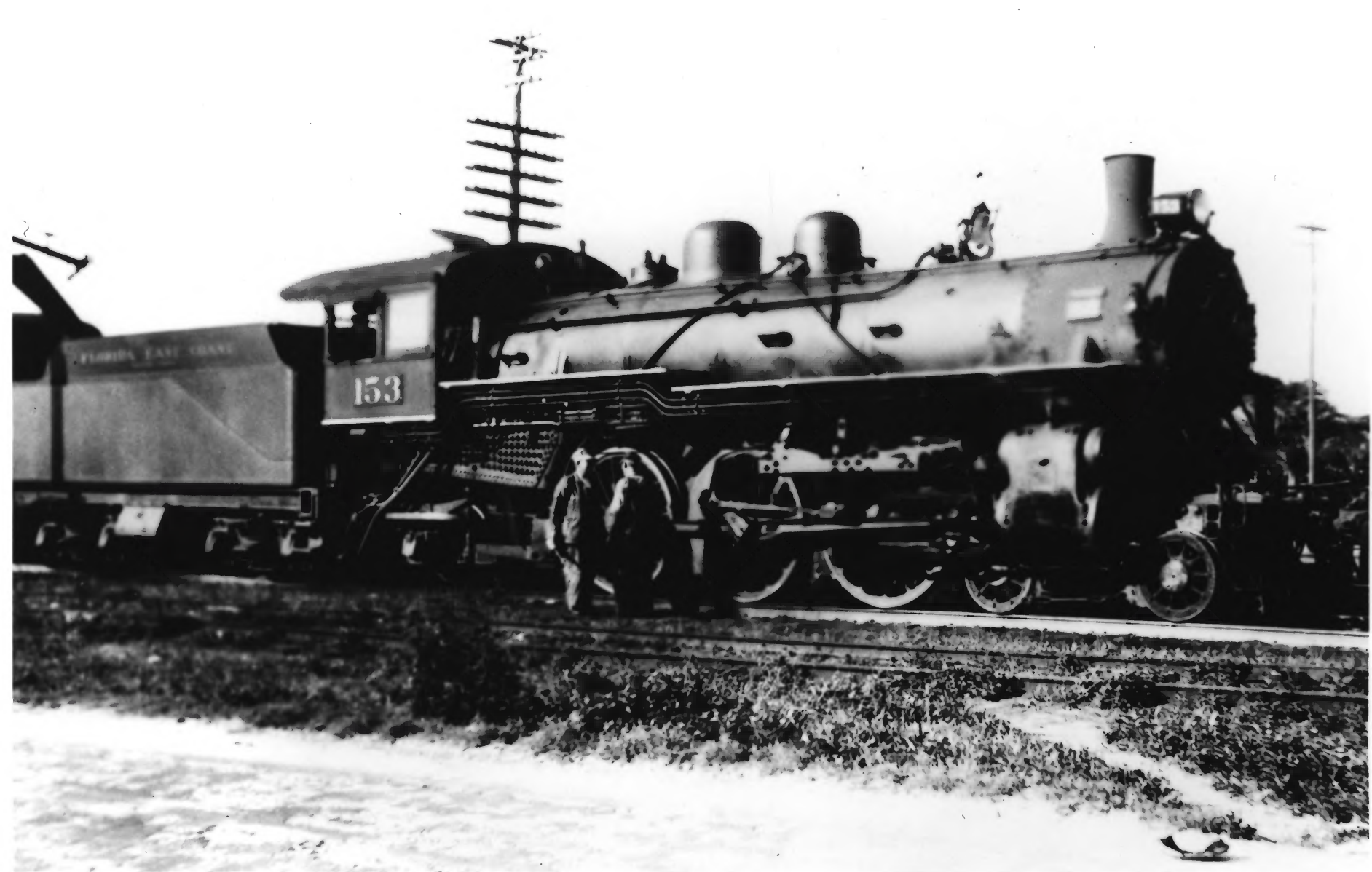


1. FEC Engine #153
2. 12400 S.W. 152nd Street, Miami  
(Dade County), Florida
3. George Gerhart
4. 1984
5. George Gerhart
6. Engine #153
7. Photo #4 of 8

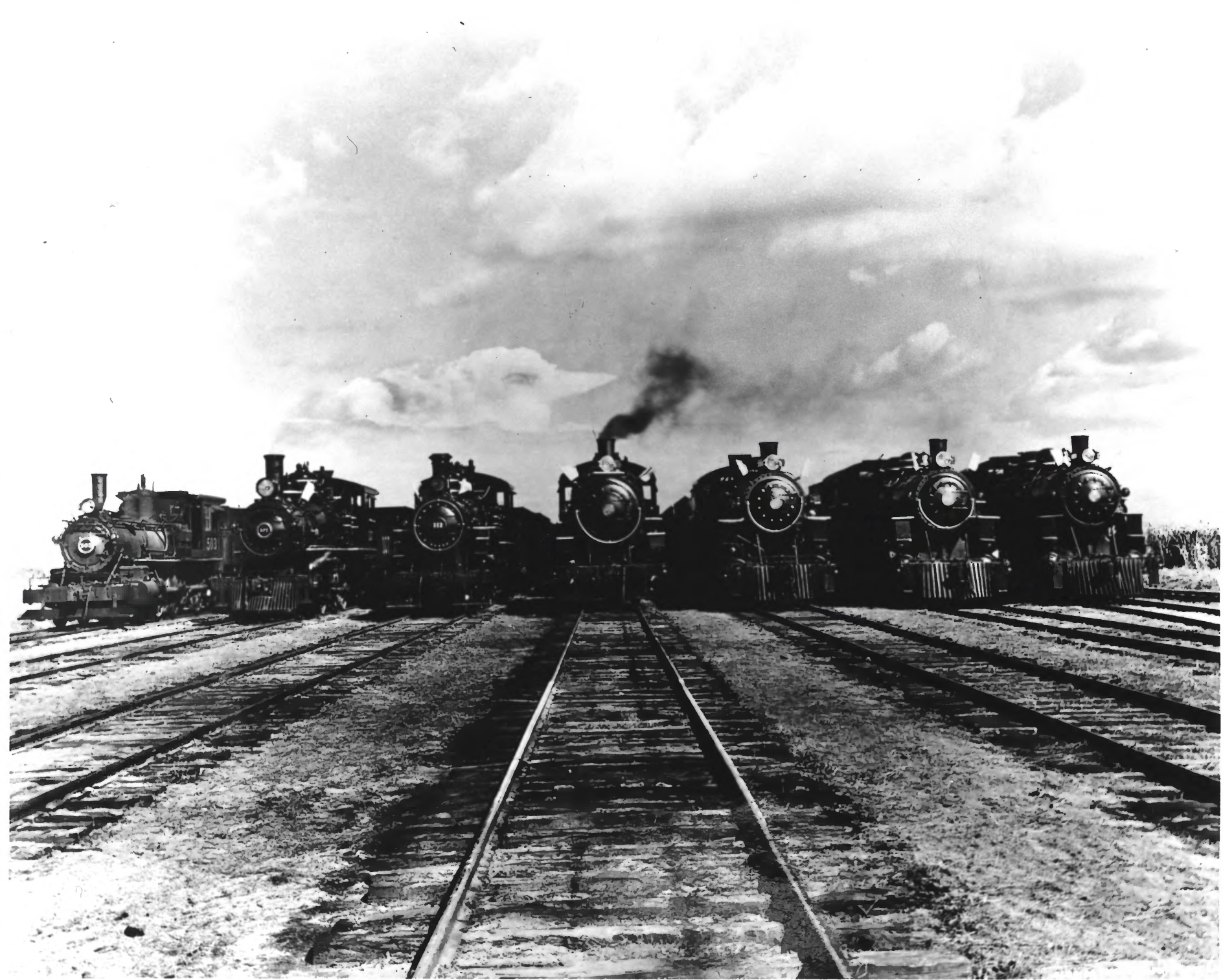




1. FEC Engine #153
2. 12400 S.W. 152nd Street, Miami  
(Dade County), Florida
3. George Gerhart
4. 1984
5. George Gerhart
6. Engine #153
7. Photo #5 of 8



1. FEC Engine
2. 12400 S.W. 152nd Street, Miami  
(Dade County), Florida
3. George Cambell
4. 1937
5. Wilson Allen
6. Engine #153
7. Photo #6 of 8



1. FEC Engine #153
2. 12400 S.W. 52nd Street, Miami  
(Dade County), Florida
3. Unknown
4. c.1947
5. U.S. Sugar Corporation
6. USSC locomotives, #153 2nd from right
7. Photo # 7 of 8



1. FEC Engine #153
2. 12400 S.W. 152nd Street, Miami  
(Dade County), Florida
3. Unknown
4. 1935
5. Seth Bramson
6. Engine #153 at scene of 1935 Key's hurricane
7. Photo #8 of 8