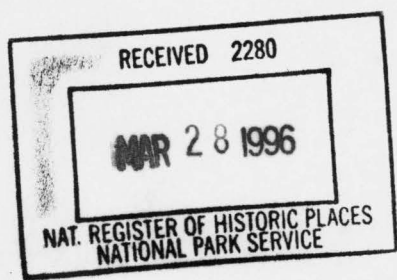


United States Department of the Interior  
National Park Service



NATIONAL REGISTER OF HISTORIC PLACES  
REGISTRATION FORM

1. Name of Property

historic name: Dardanelle Confederate Monument

other name/site number: YE0064S

2. Location

street & number: Courthouse Lawn (at the courthouse's southeast corner;  
near intersection of Union and Front Streets)

not for publication: N/A

city/town: Dardanelle

vicinity: N/A

state: AR county: Yell code: AR 149 zip code: 72834

3. Classification

Ownership of Property: Public-local

Category of Property: Object

Number of Resources within Property:

Contributing	Noncontributing	
_____	_____	buildings
_____	_____	sites
_____	_____	structures
<u>1</u>	_____	objects
<u>1</u>	<u>0</u>	Total

Number of contributing resources previously listed in the National Register: N/A

Name of related multiple property listing: "Something So Dim It Must Be Holy:" Civil War Commemorative Sculpture in Arkansas, 1886-1934

=====  
**4. State/Federal Agency Certification**  
=====

As the designated authority under the National Historic Preservation Act of 1986, as amended, I hereby certify that this X nomination \_\_\_\_\_ request for determination of eligibility meets the documentation standards for registering properties in the National Register of Historic Places and meets the procedural and professional requirements set forth in 36 CFR Part 60. In my opinion, the property X meets \_\_\_\_\_ does not meet the National Register Criteria. \_\_\_\_\_ See continuation sheet.

Cathryn A. Slator \_\_\_\_\_ 3-12-96  
Signature of certifying official Date

Arkansas Historic Preservation Program  
State or Federal agency and bureau

In my opinion, the property X meets \_\_\_\_\_ does not meet the National Register criteria. \_\_\_\_\_ See continuation sheet.

\_\_\_\_\_  
Signature of commenting or other official Date

\_\_\_\_\_  
State or Federal agency and bureau

=====  
**5. National Park Service Certification**  
=====

I, hereby certify that this property is:

- entered in the National Register \_\_\_\_\_  
\_\_\_\_\_ See continuation sheet.
- determined eligible for the National Register \_\_\_\_\_  
\_\_\_\_\_ See continuation sheet.
- determined not eligible for the National Register \_\_\_\_\_
- removed from the National Register \_\_\_\_\_
- other (explain): \_\_\_\_\_

Edson A. Bell 4-26-96

Entered in the National Register

for \_\_\_\_\_  
Signature of Keeper Date of Action

=====  
**6. Function or Use**  
=====

Historic: RECREATION AND CULTURE Sub: Monument/marker  
\_\_\_\_\_  
\_\_\_\_\_  
Current: RECREATION AND CULTURE Sub: Monument/marker  
\_\_\_\_\_  
\_\_\_\_\_

=====  
**7. Description**  
=====

Architectural Classification:

Neoclassical  
\_\_\_\_\_  
\_\_\_\_\_

Other Description: N/A

Materials:            foundation            STONE/Marble/CAST CONCRETE            roof            N/A  
                         walls                            STONE/Marble                            other            \_\_\_\_\_

Describe present and historic physical appearance.            \_\_\_\_\_ See continuation sheet.

=====  
**Summary**

The Dardanelle Confederate Monument faces east on the Yell County Courthouse grounds, at the northwest corner of Union and Front streets. The sculpture depicts a Confederate soldier standing atop a plinth that had served as a fountain at one time. He is clean shaven, hatted, and has a blanket roll draped from proper right to proper left waist. He is holding a rifle, muzzle in front of him with the stock at the proper left foot. There is a cut tree trunk to mid thigh at the rear of his proper right leg. The fountain is no longer functional, as the plumbing has been removed. The entire marble portion of the sculpture and base stands on a cast concrete slab. The sculpture is made of white marble and stands 72"x18"x18". The base is cast concrete and marble and has dimensions of 9'x4'x4'.

**Elaboration**

The Dardanelle Confederate Monument faces east on the Yell County Courthouse grounds, at the northwest corner of Union and Front streets. The sculpture depicts a Confederate soldier standing atop a plinth that had served as a fountain at one time. He is clean shaven, hatted, and has a blanket roll draped from proper right to proper left waist. He is holding a rifle, muzzle in front of him with the stock at the proper left foot. There is a cut tree trunk to mid thigh at the rear of his proper right leg. The fountain is no longer functional, as the plumbing has been removed. The entire marble portion of the sculpture and base stands on a cast concrete slab. The sculpture is made of white marble and stands 72"x18"x18". The base is cast concrete and marble and has dimensions of 9'x4'x4'.

All the inscriptions on the monument are on the east face. On the top of this side is written "18 (space) 61, 18 (space) 65." "CSA" is written on a wreath which is over a crossed banner of stars. Inscribed on the center of the east face is "TO THE / CONFEDERATE / SOLDIERS / OF / YELL COUNTY / IN APPRECIATION OF / THEIR SPLENDID VALOR / AND LOYALTY, THIS / MONUMENT IS ERECTED." At the bottom of the east face, on the proper right, is "186 (covered)." On the proper left is "865 (covered)." The fountain bowl on the center of the east side contains the inscription "BY / JOE WHEELER / CHAPTER NO. 247 / U.D.C."





\$1,760 for this monument, which is dedicated to the Confederate soldiers of Yell County. On June 3, 1921, it was unveiled at the street end between the Dardanelle and Farmers banks in downtown Dardanelle. The first part of the unveiling ceremony, which the Dardanelle Post Dispatch called "[a program] of rare beauty, eloquence, and interest," took place at the First Presbyterian Church and featured music, prayers, and speeches. Noted local orator Col. M. L. Davis gave the address. The program then moved outside for a parade through the city that included members of two U.D.C. chapters, flower girls representing each seceded state, and 33 Confederate veterans, as well as "a large concourse of citizens." When the parade reached its conclusion, more speeches were made, and the monument was formally presented. The Post Dispatch commented that "the magnificent memorial statue is an honor to the town and county, and a credit to the splendid ladies whose efforts made it possible."

The monument was moved to its current position on the courthouse lawn in 1930, where it faced the newly built free bridge. The reasoning for this move is explained by the Arkansas Division of the U.D.C.'s book Confederate Monuments and Markers in Arkansas, which states "the idea was that all who crossed the bridge would find themselves face to face with the image in marble of the greatest soldier in the world - the Confederate soldier." The move occurred in the historic period and does not affect the National Register eligibility of the monument.

The Dardanelle Confederate Monument is associated with the historic context "Something So Dim It Must Be Holy": Civil War Commemorative Sculpture in Arkansas, 1886-1934 as a commemorative monument financed and erected through the efforts of an ancestral organization in Arkansas. As such, it is eligible under Criterion A with statewide significance for its associations with the efforts of the Joe Wheeler chapter of the United Daughters of the Confederacy to reflect members' perception of the noble character and valor of their veterans and their cause. Thus, it also meets the eligibility requirements of Criteria Consideration F: Commemorative Properties.

=====  
**9. Major Bibliographical References**  
=====

"Confederate Monuments and Markers in Arkansas," Arkansas Division U.D.C., 1960, p. 61.

Dardanelle Post Dispatch, May 19, 1921, p. 1.

Dardanelle Post Dispatch, June 9, 1921, p. 1.

\_\_\_ See continuation sheet.

Previous documentation on file (NPS):

- preliminary determination of individual listing (36 CFR 67) has been requested.
- previously listed in the National Register
- previously determined eligible by the National Register
- designated a National Historic Landmark
- recorded by Historic American Buildings Survey # \_\_\_\_\_
- recorded by Historic American Engineering Record # \_\_\_\_\_

Primary Location of Additional Data:

X State historic preservation office

- Other state agency
- Federal agency
- Local government
- University
- Other -- Specify Repository: \_\_\_\_\_

=====  
**10. Geographical Data**  
 =====

Acreage of Property: Less than one

UTM References:	Zone	Easting	Northing	Zone	Easting	Northing
A	<u>15</u>	<u>485770</u>	<u>3897700</u>	B	<u>15</u>	_____
C	<u>15</u>	_____	_____	D	<u>15</u>	_____

\_\_\_ See continuation sheet.

Verbal Boundary Description: \_\_\_ See continuation sheet.

An area around the monument defined by a 25 foot radius centered on the monument itself.

Boundary Justification: \_\_\_ See continuation sheet.

This boundary includes all the property historically associated with this resource.

=====  
**11. Form Prepared By**  
 =====

Name/Title: John Slater, Special Projects Intern/AHPP Staff

Organization: Arkansas Historic Preservation Program Date: 03/07/96

Street & Number: 323 Center Street, Suite 1500 Telephone: (501) 324-9880

City or Town: Little Rock State: AR Zip: 72201

UNITED STATES DEPARTMENT OF THE INTERIOR  
NATIONAL PARK SERVICE

NATIONAL REGISTER OF HISTORIC PLACES  
EVALUATION/RETURN SHEET

REQUESTED ACTION: NOMINATION

PROPERTY Dardanelle Confederate Monument  
NAME:

MULTIPLE Civil War Commemorative Sculpture MPS  
NAME:

STATE & COUNTY: ARKANSAS, Yell

DATE RECEIVED: 3/28/96 DATE OF PENDING LIST: 4/09/96  
DATE OF 16TH DAY: 4/25/96 DATE OF 45TH DAY: 5/12/96  
DATE OF WEEKLY LIST:

REFERENCE NUMBER: 96000456

NOMINATOR: STATE

REASONS FOR REVIEW:

APPEAL: N DATA PROBLEM: N LANDSCAPE: N LESS THAN 50 YEARS: N  
OTHER: N PDIL: N PERIOD: N PROGRAM UNAPPROVED: N  
REQUEST: N SAMPLE: N SLR DRAFT: N NATIONAL: N

COMMENT WAIVER: N

ACCEPT  RETURN  REJECT 4-26-96 DATE

ABSTRACT/SUMMARY COMMENTS:

Entered in the  
National Register

RECOM./CRITERIA \_\_\_\_\_

REVIEWER \_\_\_\_\_ DISCIPLINE \_\_\_\_\_

TELEPHONE \_\_\_\_\_ DATE \_\_\_\_\_

DOCUMENTATION see attached comments Y/N see attached SLR Y/N







Dardanelle Confederate Monument

Dardanelle, Yell Co., AR

Photo by C. R. Logan

October 1995

Negative on file at AHPP

View from West



Dardanelle Confederate Monument

Dardanelle, Yell Co., AR

Photo by C. R. Logan

October 1995

View from East





TO THE  
CONFEDERATE  
SOLDIERS  
OF  
YELL COUNTY  
IN APPRECIATION OF  
THEIR SPLENDID VALOR  
AND LOYALTY, THIS  
MONUMENT IS ERECTED.

186

BY  
JOE WHEELER  
CHAPTER NO. 247  
U. C. V.

365



Dardanelle Confederate Monument

Dardanelle, Yell Co., AR

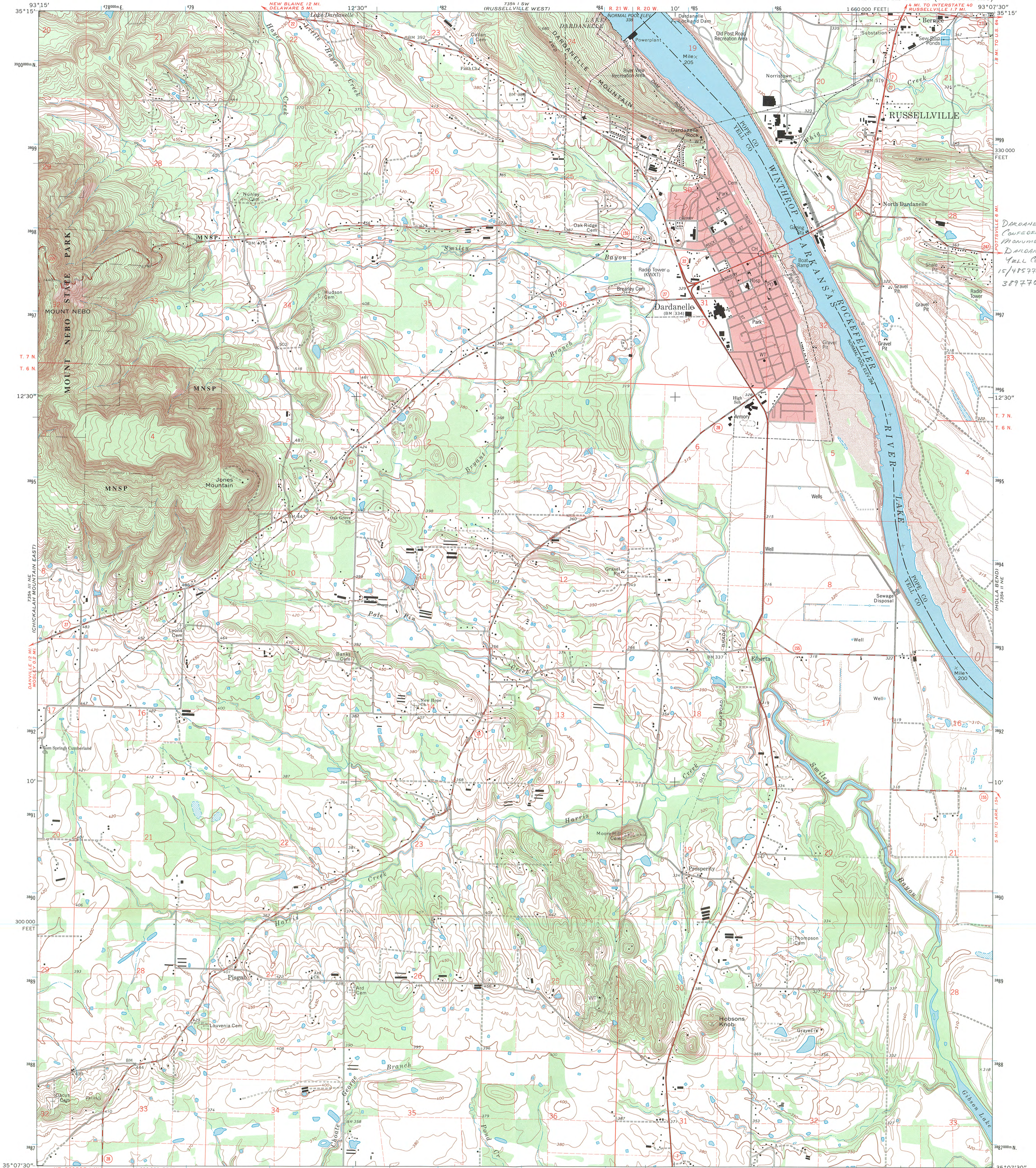
Photo by C. R. Logan

October 1995

Negative on file at AHPP

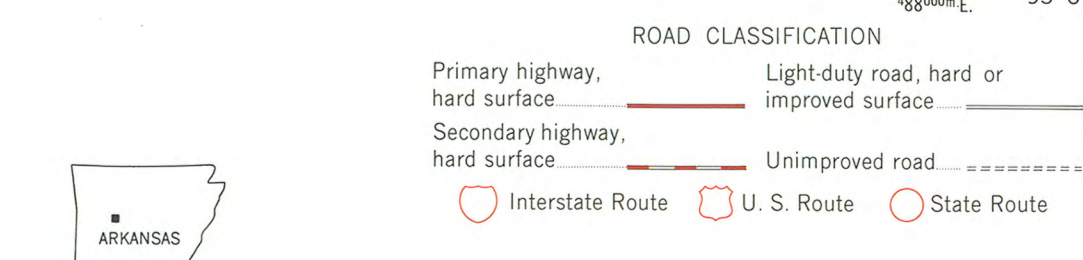
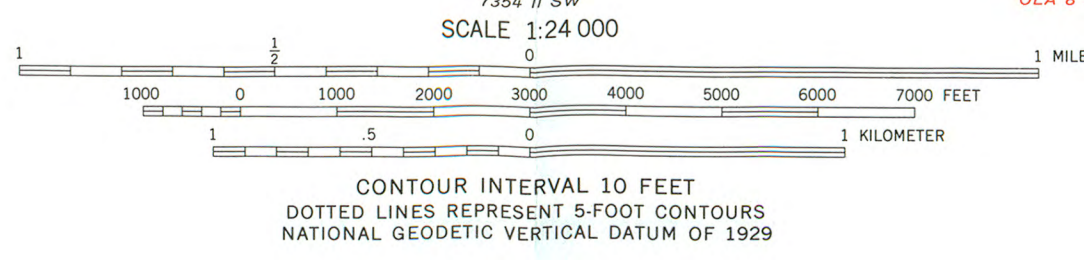
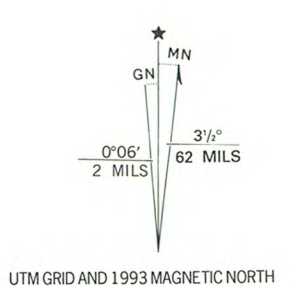
View of east detail





DARDANELLE CONFEDERATE MONUMENT DARDANELLE, YELL CO., AR 15/495770/ 3897700

Produced by the United States Geological Survey  
Control by USGS and NOS/NOAA  
Topography by photogrammetric methods from aerial photographs taken 1971. Field checked 1972. Revised from aerial photographs taken 1989-90. Field checked 1992. Map edited 1993  
Projection and 10,000-foot grid ticks: Arkansas coordinate system, north zone (Lambert conformal conic)  
1000-meter Universal Transverse Mercator grid ticks, zone 15, shown in blue 1927 North American Datum (NAD 27)  
North American Datum of 1983 (NAD 83) is shown by dashed corner ticks The values of the shift between NAD 27 and NAD 83 for 7.5-minute intersections are given in USGS Bulletin 1875  
There may be private inholdings within the boundaries of the National or State reservations shown on this map  
Red tint indicates area in which only landmark buildings are shown  
Fine red dashed lines indicate selected fence and field lines where generally visible on aerial photographs. This information is unchecked



COMPLIES WITH U.S. GEOLOGICAL SURVEY STANDARDS FOR SPATIAL ACCURACY - CLASS 2  
FOR SALE BY U.S. GEOLOGICAL SURVEY, DENVER, COLORADO 80225, OR RESTON, VIRGINIA 22092  
AND ARKANSAS GEOLOGICAL COMMISSION, LITTLE ROCK, ARKANSAS 72204  
A FOLDER DESCRIBING TOPOGRAPHIC MAPS AND SYMBOLS IS AVAILABLE ON REQUEST

DARDANELLE, ARK.  
35093-B2-TF-024