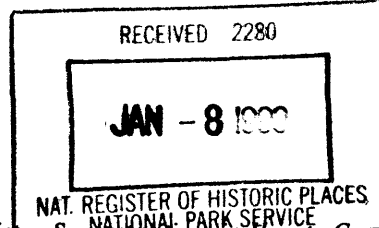


United States Department of the Interior
National Park Service

National Register of Historic Places
Registration Form

128



This form is for use in nominating or requesting determinations for individual properties and districts. See instructions in How to Complete the National Register of Historic Places Registration Form (National Register Bulletin 16A). Complete each item by marking "x" on the appropriate line or by entering the information requested. If an item does not apply to the property being documented, enter "N/A" for "not applicable." For functions, architectural classification, materials, and areas of significance, enter only categories and subcategories from the instructions. Place additional entries and narrative items on continuation sheets (NPS Form 10-900a). Use a typewriter, word processor, or computer, to complete all items.

1. Name of Property

historic name LOUDEN MACHINERY COMPANY
other names/site number Louden, "The Plant"

2. Location

street & number 607 West Broadway Avenue N/A not for publication
city or town Fairfield N/A vicinity
state Iowa code IA county Jefferson code 101 zip code 52556

3. State/Federal Agency Certification

As the designated authority under the National Historic Preservation Act, as amended, I hereby certify that this (nomination request for determination of eligibility) meets the documentation standards for registering properties in the National Register of Historic Places and meets the procedural and professional requirements set forth in 36 CFR Part 60. In my opinion, the property (meets _ does not meet) the National Register criteria. I recommend that this property be considered significant (_ nationally _ statewide locally). (See continuation sheet for additional comments.)

Signature Patsy A. Peterson Date 12-20-08
State or Federal agency and bureau NATIONAL HISTORICAL SOCIETY OF IOWA

In my opinion, the property (_ meets _ does not meet) the National Register criteria. (_ See continuation sheet for additional comments.)

Signature of certifying official/Title _____ Date _____
State or Federal agency and bureau _____

4. National Park Service Certification

I hereby certify that the property is :

- entered in the National Register.
_ See continuation sheet.
- determined eligible for the National Register
_ See continuation sheet
- determined not eligible for the National Register
- removed from the National Register.
- Other, (Explain)

Signature of Keeper Edson H. Beall Date of Action 2/22/99

Louden Machinery Company
Name of Property

Jefferson County, Iowa
County and State

5. Classification

Ownership of Property
(Check as many lines as apply)

- private
- public-local
- public-State
- public-Federal

Category of Property
(Check only one line)

- building(s)
- district
- site
- structure
- object

Number of Resources within Property
(Do not include previously listed resources in the count.)

Contributing	Noncontributing	
<u>1</u>		buildings
		sites
		structures
		objects
<u>1</u>	<u>0</u>	Total

Name of related multiple property listing
(Enter "N/A" if property is not part of a multiple property listing)

Louden Machinery Company, Fairfield, Iowa

**Number of contributing resources
previously listed in the National Register**

0

6. Function or Use

Historic Functions
(Enter categories from instructions)

INDUSTRY/PROCESSING/EXTRACTION:
manufacturing facility

Current Functions
(Enter categories from instructions)

COMMERCE/TRADE: business, restaurant
DOMESTIC: multiple dwelling
INDUSTRY/PROCESSING/EXTRACTION:
manufacturing facility

7. Description

Architectural Classification
(Enter categories from instructions)

NO STYLE

Materials
(Enter categories from instructions)

foundation Concrete
walls Brick
roof Asphalt
other Metal
Glass

Narrative Description

(Describe the historic and current condition of the property on one or more continuation sheets.)

Louden Machinery Company
Name of Property

Jefferson County, Iowa
County and State

8. Statement of Significance

Applicable National Register Criteria
(Mark "x" on one or more lines for the criteria qualifying the property for National Register listing)

- A** Property is associated with events that have made a significant contribution to the broad patterns of our history.
- B** Property is associated with the lives of persons significant in our past.
- C** Property embodies the distinctive characteristics of a type, period, or method of construction or represents the work of a master, or possesses high artistic values, or represents a significant and distinguishable entity whose components lack individual distinction.
- D** Property has yielded, or is likely to yield, information important in prehistory or history.

Criteria Considerations
(Mark "x" on all the lines that apply)
Property is:

- A** owned by a religious institution or used for religious purposes.
- B** removed from its original location.
- C** a birthplace or grave.
- D** a cemetery.
- E** a reconstructed building, object, or structure.
- F** a commemorative property.
- G** less than 50 years of age or achieved significance within the past 50 years.

Areas of Significance
(Enter categories from instructions)

INDUSTRY
AGRICULTURE

Period of Significance

Circa 1900-1948

Significant Dates

Circa 1900
Circa 1910

Significant Person
(Complete if Criterion B is marked above)

See Continuation Sheet

Cultural Affiliation

Architect/Builder
Louden Machinery Company

Narrative Statement of Significance - (Explain the significance of the property on one or more continuation sheets)

9. Major Bibliography References

Bibliography

(Cite the books, articles and other sources used in preparing this form on one or more continuation sheets.)

Previous documentation on file (NPS):

- previous determination of individual listing (36 CFR 67) has been requested
- previously listed in the National Register
- previously determined eligible by the National Record
- designated a National Historic Landmark
- recorded by American Buildings Survey # _____
- recorded by Historic American Engineering Record # _____

Primary location of additional data:

- State Historical Preservation Office
- Other State agency
- Federal agency
- Local government
- University
- Other

Name of repository

Louden Machinery Company
Name of Property

Jefferson County, Iowa
County and State

10. Geographical Data

Acreage of Property 5.5 acres +/-

UTM References

(Place additional UTM references on a continuation sheet.)

1 | 15 | 5 8 6 4 9 5 | 4 5 4 0 1 5 0 |

Zone Easting Northing

2 | 15 | 5 8 6 5 9 0 | 4 5 4 0 1 5 0 |

Zone Easting Northing

3 | 15 | 5 8 6 4 9 5 | 4 5 3 9 9 0 5 |

Zone Easting Northing

4 | 15 | 5 8 6 5 9 0 | 4 5 3 9 9 0 5 |

Verbal Boundary Description

(Describe the boundaries of the property on a continuation sheet)

Boundary Justification

(Explain why the boundaries were selected on a continuation sheet)

11. Form Prepared By

name/title William C. Page, Public Historian; Joanne R. Walroth, Project Associate

organization Jefferson County Historic Preservation Commission date November 15, 1997

street & number 520 East Sheridan Avenue (Page) telephone 515-243-5740 (Page)

city or town Des Moines state Iowa zip code 50313-5017

Additional Documentation

Submit the following items with the completed form:

Continuation Sheets

Maps

A **USGS map** (7.5 or 15 minute series) indicating the property's location.

A **Sketch map** for historic districts and properties having large acreage or numerous resources.

Photographs - Representative **black and white photographs** of the property.

Additional items - (Check with the SHPO or FPO for any additional items)

Property Owner

(Complete this item at the request of SHPO or FPO.)

name See Continuation Sheet

street & number _____ telephone _____

city or town _____ state _____ zip code _____

Paperwork Reduction Act Statement: This information is being collected for applications to the National Register of Historic Places to nominate properties for listing or determine eligibility for listing, to list properties, and to amend existing listings. Response to this request is required to obtain a benefit in accordance with the National Historic Preservation act, as amended (16 U.S.C. 470 et seq.).

Estimated Burden Statement: Public reporting burden for this form is estimated to average 18.1 hours per response including time for reviewing instructions, gathering and maintaining data, and completing and reviewing the form. Direct comments regarding this burden

**United States Department of the Interior
National Park Service**

**NATIONAL REGISTER OF HISTORIC PLACES
CONTINUATION SHEET**

Section number 7 Page 1

CFN-259-1116

Louden Machinery Company, Jefferson County, Iowa.

GENERAL DESCRIPTION

This is a factory complex constructed for the manufacturing of metal products circa 1900 and subsequently expanded circa 1910 and later. Situated directly east of the former Chicago, Rock Island, and Pacific Railroad tracks, the main building is a brick block, which faces south. Over the years, numerous additions and wings were built to the north of the main building as the factory expanded. Some of these were subsequently razed. The 3-story, brick main building, which served as the offices for the Louden Machinery Company, has remained intact throughout this time and is the most visually prominent component of the factory complex. This complex also includes three large 2-story units and several 1-story units, constructed in the 1970s to house the industrial operations of the Chain & Lifting Products Division of ACCO. This corporation, which fabricates metal products, is an heir of the Louden Machinery Company. Until the 1990s, ACCO held title to the entire factory complex. In 1993, ACCO sold the main building to the Broadway Development Corporation. That corporation has subsequently converted the main building into a restaurant, retail and service shops, offices, and apartments.

MAIN BUILDING

The main building was the first improvement erected by the Louden Machinery Company on this site and remains its most visually prominent element. It consists of three units. The south unit is of solid brick construction, 3-stories in height, and covered with a flat roof. It possesses a rectangularly-shaped footprint measuring approximately 134' x 49' (width by depth). The middle unit is of solid brick construction, 3-stories in height, and covered with a flat roof. It possesses a rectangularly-shaped footprint measuring approximately 71' x 102' and shares a common wall with the south unit and a common wall with the north unit. The north unit is of solid brick construction, 2-stories in height, and covered with a flat roof. It possesses a rectangularly-shaped footprint measuring approximately 71' x 102' and shares a common wall with the middle unit. Two Louden manufactured ventilators are situated on the roof of the north unit. The north elevation of that unit abuts the modern factory, which is excluded from this nomination.

The south unit serves as the facade of the main building. The south unit was built in two parts. A 2-story building was constructed circa 1900 directly abutting an alley on the east. It was named Building #5 and used for a pattern shop and offices (See Continuation Sheets 7-7.) An historic photograph of this building shows its original appearance. (See Continuation Sheet 8-14.) It was enlarged circa 1910. The original facade, with its original six bays, was extended to the west with the construction of another six bays, and a third floor was constructed across the entire facade. (See Continuation Sheet 7-8.) An historic photograph pictures this transformation. (See Continuation Sheet 8-15.) The "north unit," as described above, was also constructed. Care was taken to match the design of the circa 1900 building, including similar brick color, fenestration treatment, and cornice work on the facade.

United States Department of the Interior
National Park Service

**NATIONAL REGISTER OF HISTORIC PLACES
CONTINUATION SHEET**

Section number 7 Page 2

CFN-259-1116

Louden Machinery Company, Jefferson County, Iowa.

The facade of the original building is constructed of orange-red colored brick and features a cornice worked in a purple-colored brick. This cornice was repeated between the second and third floors during the circa 1910 construction, and a cornice was also constructed above the third floor.

The main building rests on a poured concrete foundation. The walls are of solid brick construction. The internal structural support within the building is provided by heavy wood frame. The building is covered with a flat roof of composition materials.

Most of the main building's windows are original to it. Most windows on the facade of the south unit are paired and feature 1/1 double hung sash and cast stone sills. These windows are mostly paired and feature arches above them. Most of the windows on the west elevation of the building feature 9/9 double hung sash windows. Most of the windows on the east elevation feature 2/2 double hung sash. The windows on the west and east elevations are single, rather than paired as on the facade. The windows possess arched lintels, which are fabricated of the same purple-colored brick and the cornices on the facade.

On the interior, the first floor served as offices, with the pattern shop on the second floor. The west wing provided space for factory operations. For example, in 1913, paint dipping machine and finished material storage were located here. A showroom was situated on the third floor. A freight elevator, located on the west wall of the west wing, accessed each of these floors and remains in use today.

Today, the first floor is used for a restaurant and offices. It features 9' ceilings. The second floor is used for offices, and it also features 9' ceilings. The third floor is presently given over to apartments and possesses 12' ceilings. A full basement is situated under the south unit. It features a reinforced concrete floor, with portions of the floor constructed of brick.

Several alterations have taken place to the exterior of this building. They include the removal of a large sign, which stretched across the facade of the building and was situated on its roof. This sign read: "Louden Machinery Co., Modern Barn Equipments." A water tower also was situated on the roof near this sign. It featured the name "Louden" painted in vertical letters. A third Louden sign was situated on the roof of the west wing and faced west. These signs and the water tower were pictured in a 1920s photograph of the building.

In the 1980s, a 1-story porch was built at the main entrance. It features a canvas roof supported by metal braces on concrete columns and measures 20' x 13'. Although the color contrast between this porch's materials and the red brick of the factory building is visually distracting, the porch is reversible. A side porch is situated on the east elevation of the building. This entrance features an arched entryway and is clad with stucco. Although this porch is also visually distracting from the building's historic materials, it is not intrusive because it cannot be seen from West Broadway.

Presently, the main building is in good condition. This building, along with the ACCO factory described below, is counted as one contributing resource to this nomination. All these units are counted as one resource because they are attached to one another.

**United States Department of the Interior
National Park Service**

**NATIONAL REGISTER OF HISTORIC PLACES
CONTINUATION SHEET**

Section number 7 Page 3

CFN-259-1116

Louden Machinery Company, Jefferson County, Iowa.

A tall, free-standing, brick chimney is situated at the northeast corner of the north unit. It is attached to the main building by a concrete tunnel below grade. Although the exterior of this chimney has been parged with stucco and painted, it retains its original height and crown. The construction of this chimney predates World War II.

ACCO FACTORY

The ACCO factory is attached to the main building on the north. This factory possesses a number of units. Although a few of these units were constructed by the Loudon Machinery Company, most of the improvements were constructed by ACCO in the 1970s. For the convenience of this nomination, the improvements within this portion of the complex are identified as Unit A, Unit B, Unit C, Unit D, Unit E, Unit F, and Unit G. All these units are attached to one another, except Unit G and a large, fuel storage tank. Unit G and the tank are free-standing and are counted as noncontributing. A description of all these improvements follows:

Unit A is a large building constructed in the 1970s. It features a flat roof and walls clad with metal and precast concrete. Although Unit A possesses only 1-story, that story stands as tall as a 2-story building. A small wing is situated on the northwest corner of Unit A and another wing is situated on its west.

Unit B is 1-story building with a gable roof. The roof features three Loudon-designed ventilators. Unit B was probably constructed during World War II. It is attached to Unit C by an enclosed connector.

Unit C is a 1-story, Morton-type unit, covered with a facade gable roof with walls clad with metal. It was constructed in the 1970s, serves as offices for ACCO, and bears the corporate address of 200 North 6th Street. A small wing is attached to the west of Unit C. Unit C is attached to Unit B by an enclosed connector.

Unit D is a large, 1-story building constructed by the Loudon Machinery Company probably during World War II. It features a flat roof, walls clad with vertical wood siding, and commercial-style metal windows.

Unit E was constructed in the 1970s. It features a flat roof and walls clad with metal. Although Unit E possesses only 1-story, that story stands as tall as a 2-story building

Unit F is a large building constructed in the 1970s. It features a gable roof and walls clad with metal. Although Unit F possesses only 1-story, that story stands as tall as a 2-story building

**United States Department of the Interior
National Park Service**

**NATIONAL REGISTER OF HISTORIC PLACES
CONTINUATION SHEET**

Section number 7 Page 4

CFN-259-1116

Louden Machinery Company, Jefferson County, Iowa.

Unit G is a pole-barn garage built in the 1970s. It features a gable roof and walls clad with metal. Unit G is situated in an el formed by Unit E and Unit F but is detached from both of them. Unit G is counted as one noncontributing building.

A large, fuel storage tank is located directly east of Unit D. The name "Louden" is painted in large, blue letters on this tank. This tank was installed in the 1970s. It is counted as one noncontributing structure.

Taken all together, the units described above occupy an area of about 5 acres. In spite of that size, these units do not visually intrude on the main building of the factory complex. This is because the main building serves as the facade of the complex and stands as high or higher than any of the units situated behind it. Presently the ACCO factory is in good condition.

SITE

The site of the Loudon Machinery Company is bounded by West Broadway Avenue on the south, North 6th Street on the east, West Grimes Avenue on the north, and the former Chicago, Pacific, and Rock Island Railroad tracks on the west. This site contains several city blocks plus a vacated portion of West Briggs Avenue, West Hempstead Avenue, and a north-south alley. (See Continuation Sheet 7-6.)

This main building is situated on Lot 5, Lot 6, and Lot 3 in Block 9 in Gage's Addition. The space between the main building and West Broadway Avenue is landscaped in lawn and shrubs. A mature Sycamore tree stands to the southwest of the building's main entrance. West Broadway Avenue retains its original brick paving from South 7th Street to North 5th Street. (Asphalt covers the brick pavers to the east of North 5th, but much of the street probably remains intact underneath it.) West Broadway also features cut stone curbs on both sides of its brick-paved surface. A parking lot is situated on Lot 7 and Lot 8 of Block 9 in Gage's Addition. This can also be described as at the corner of West Broadway and North 6th.

The improvements owned by ACCO are situated on Lots 1-4 in Block 3, Lots 1-8 in Block 4, and Lots 1-2 and a portion of Lot 4 in Block 9--all in Gage's Addition. The remainder of Lot 4 in Block 9 is given over to a parking lot. The former Chicago, Pacific, and Rock Island Railroad tracks are situated directly to the west. That road's passenger depot is located across the street to the southwest from the main building. Land directly south of the Loudon Machinery Company and to the east remain residential.

The immediate surroundings of the Loudon Machinery Company are generally level in topography. U.S. Highway 34--which is West Burlington Avenue in Fairfield--is located one block to the south. It serves as an east-west artery through Fairfield. The William and Mary Jane Loudon House is located about two blocks south of the factory at 501 West Washington Avenue. Fairfield's central business district is located about four blocks to the east from the factory.

United States Department of the Interior
National Park Service

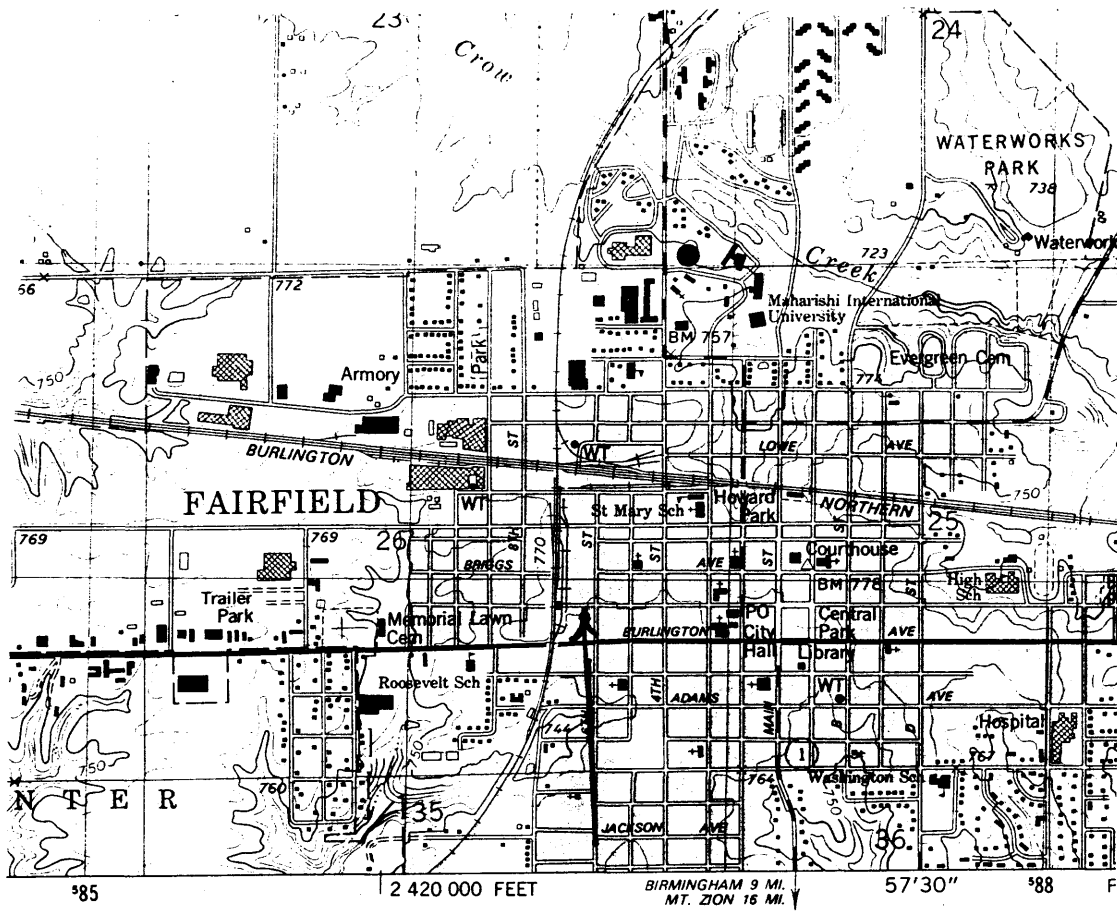
NATIONAL REGISTER OF HISTORIC PLACES
CONTINUATION SHEET

Section number 7 Page 5

CFN-259-1116

Louden Machinery Company, Jefferson County, Iowa.

SITE MAP
ARROW LOCATES PROPERTY



Source: U.S.G.S. Map (7.5 Minute Series), Fairfield North Quadrangle, 1980.

United States Department of the Interior
National Park Service

NATIONAL REGISTER OF HISTORIC PLACES CONTINUATION SHEET

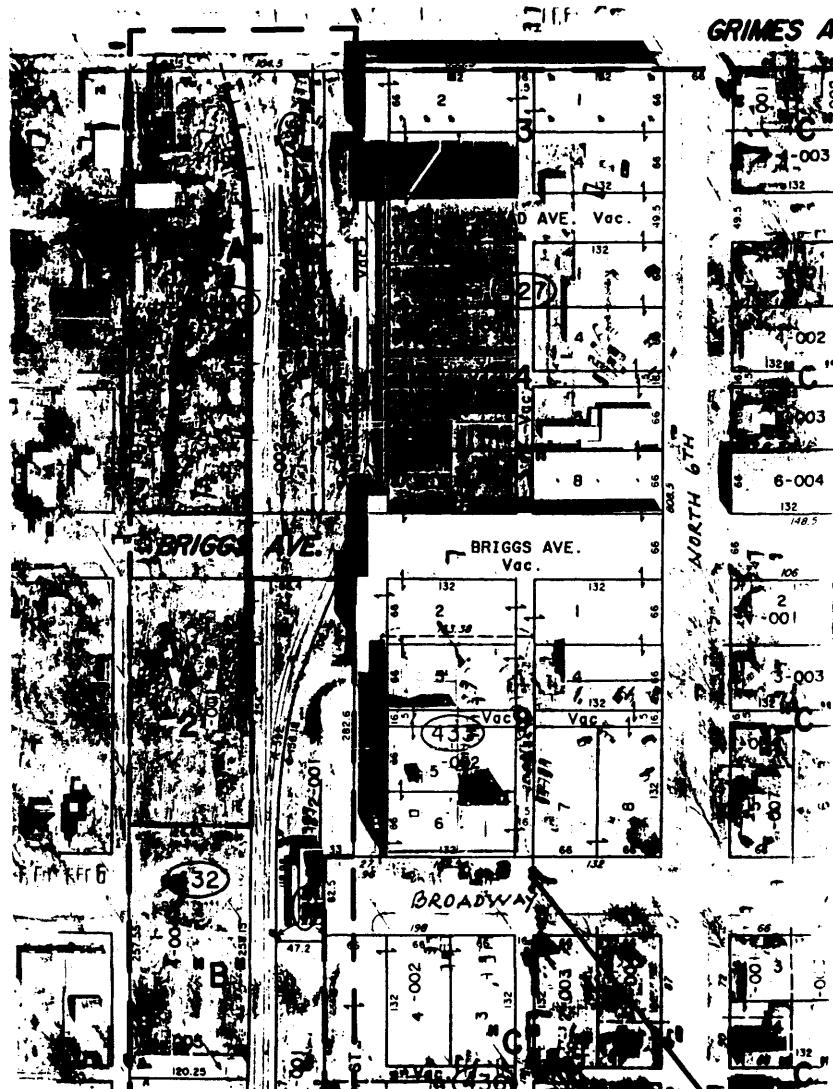
Section number 7 Page 6

CFN-259-1116

Louden Machinery Company, Jefferson County, Iowa.

AERIAL PHOTOGRAPH

ARROW LOCATES FACTORY



Scale: One inch equals 400 feet.

Source: The Sidwell Company, 1996.

United States Department of the Interior
National Park Service

NATIONAL REGISTER OF HISTORIC PLACES
CONTINUATION SHEET

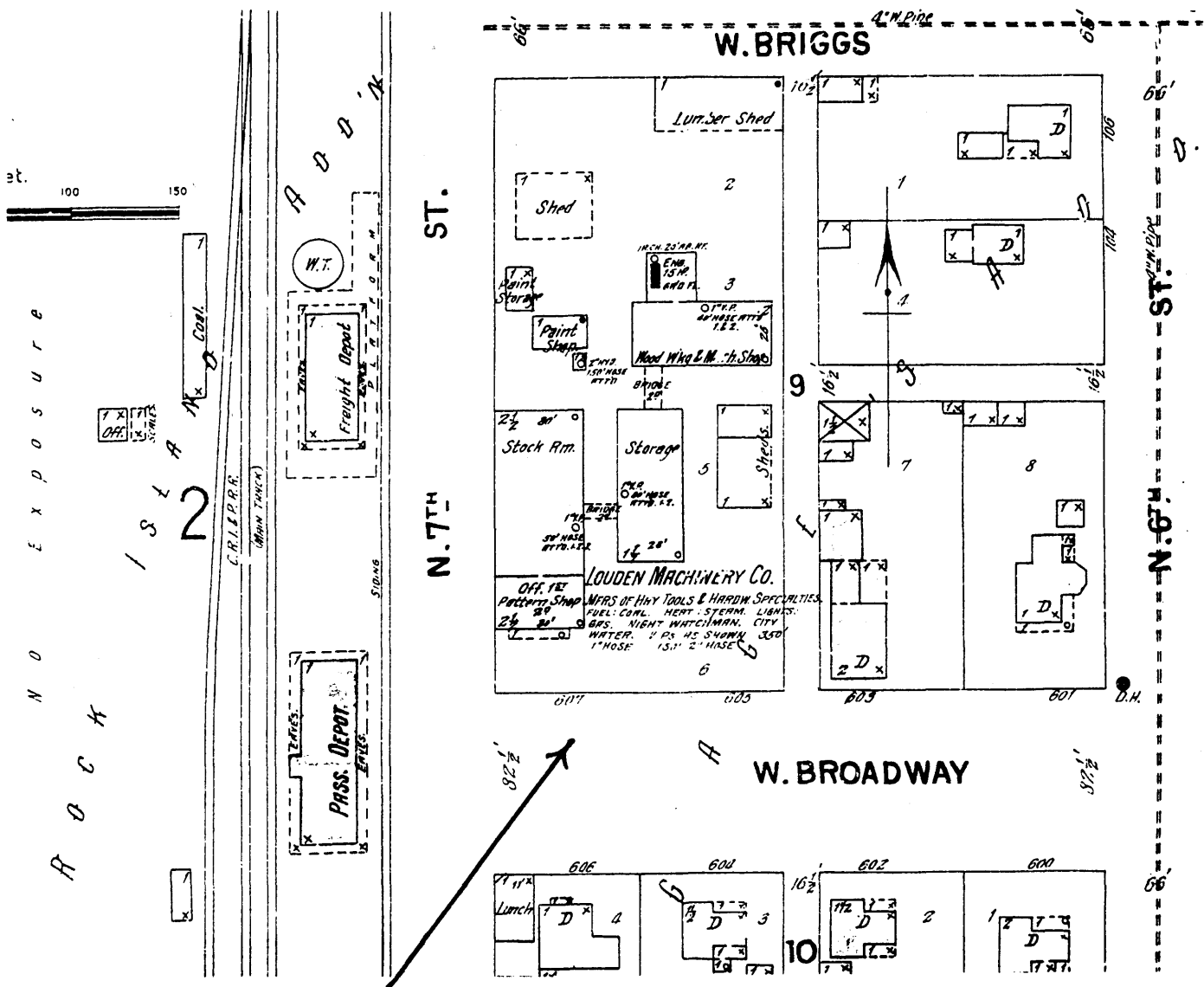
Section number 7 Page 7

CFN-259-1116

Louden Machinery Company, Jefferson County, Iowa.

1899 FIRE INSURANCE MAP

ARROW LOCATES PROPERTY



United States Department of the Interior
National Park Service

NATIONAL REGISTER OF HISTORIC PLACES CONTINUATION SHEET

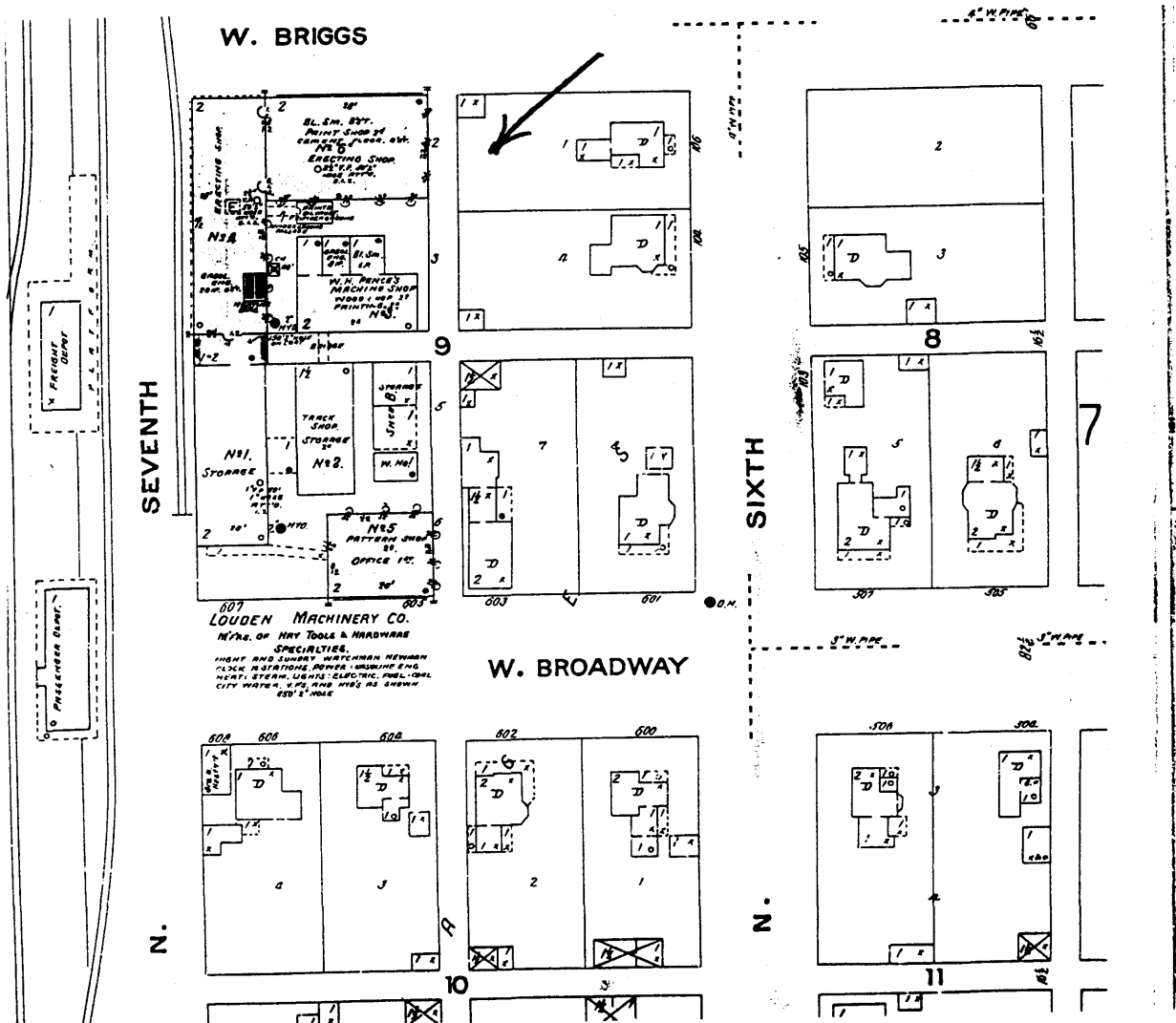
Section number 7 Page 8

CFN-259-1116

Louden Machinery Company, Jefferson County, Iowa.

1907 FIRE INSURANCE MAP

ARROW LOCATES PROPERTY



United States Department of the Interior
National Park Service

NATIONAL REGISTER OF HISTORIC PLACES CONTINUATION SHEET

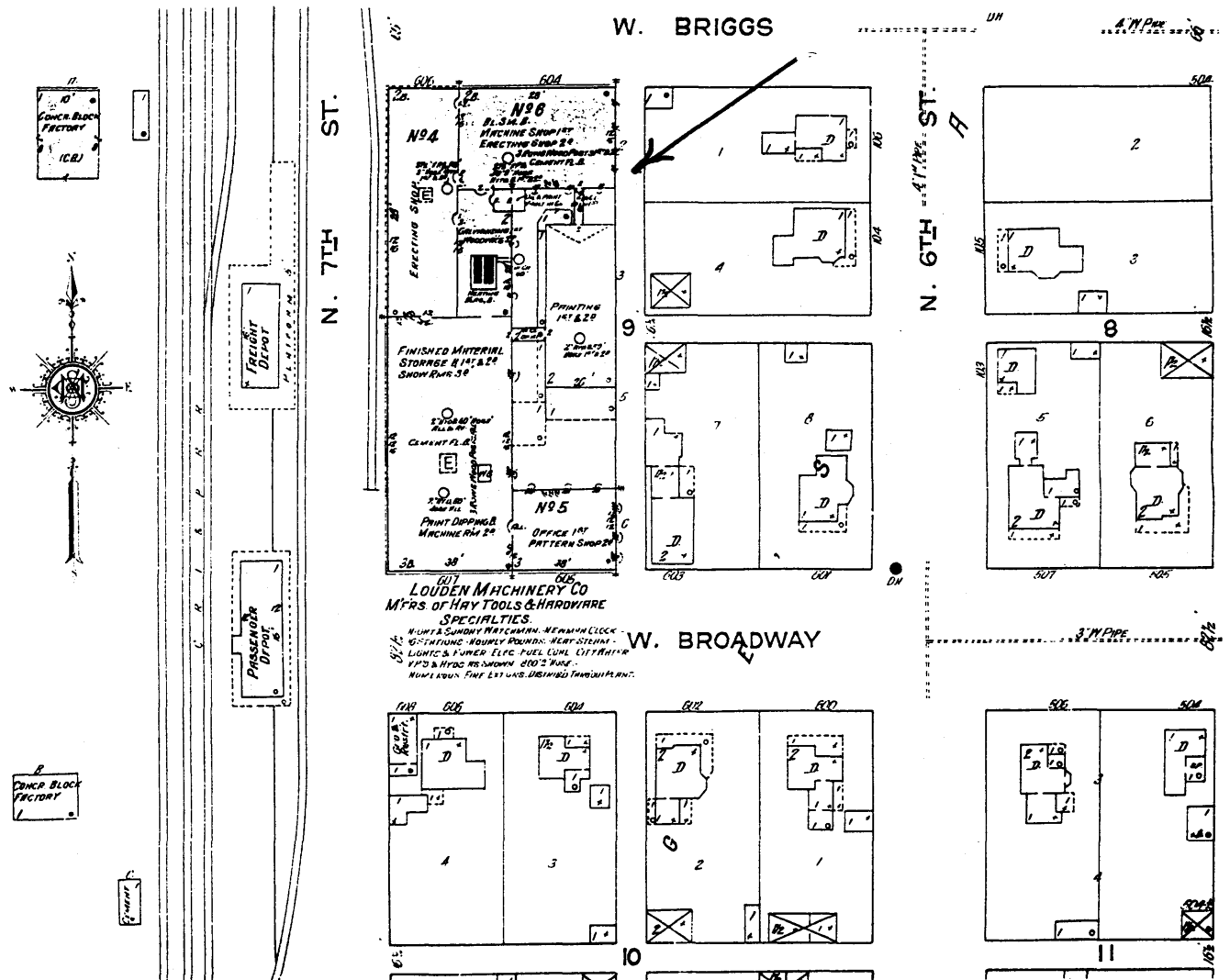
Section number 7 Page 9

CFN-259-1116

Louden Machinery Company, Jefferson County, Iowa.

1913 FIRE INSURANCE MAP

ARROW LOCATES PROPERTY



United States Department of the Interior
National Park Service

NATIONAL REGISTER OF HISTORIC PLACES CONTINUATION SHEET

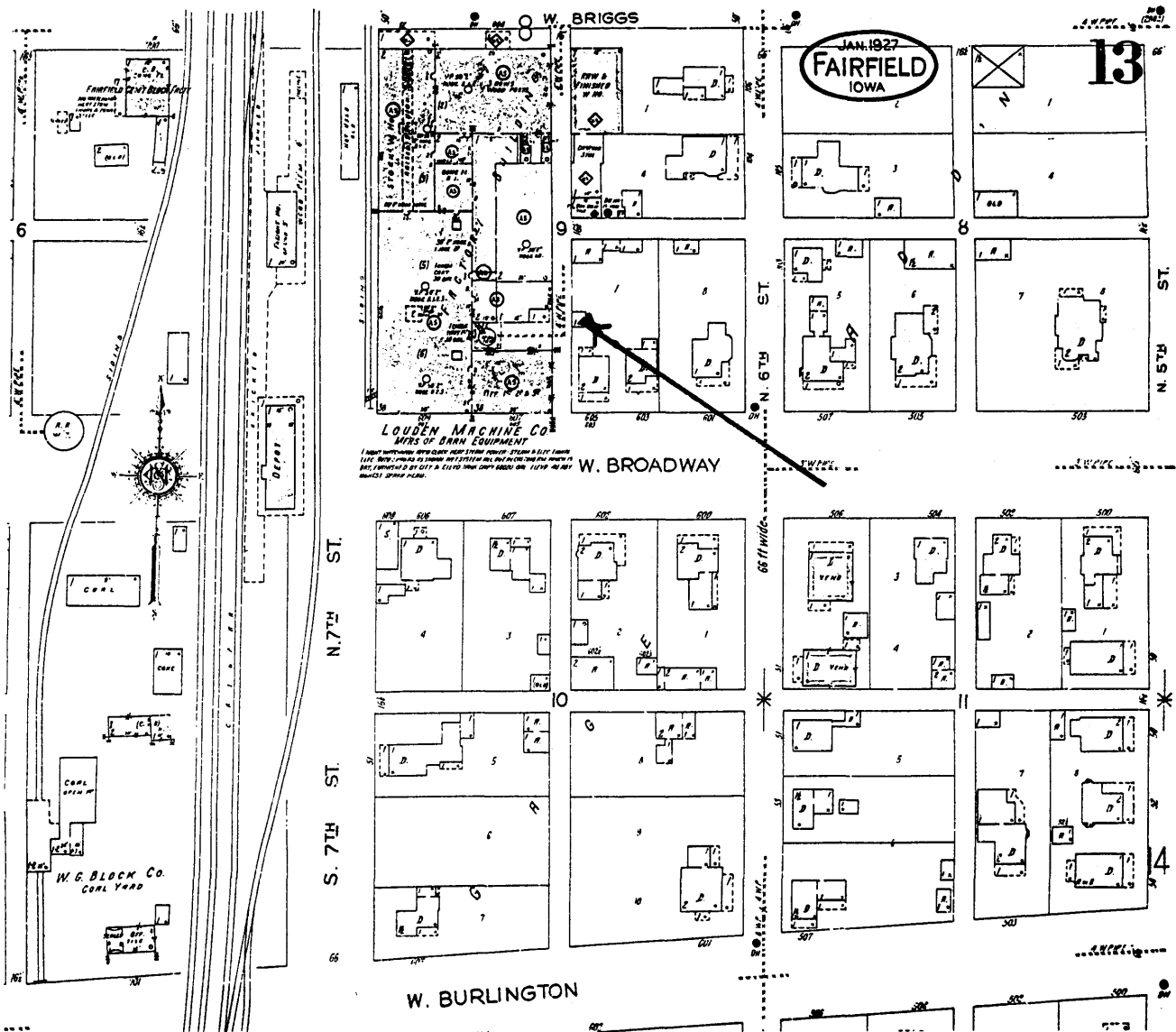
Section number 7 Page 10

CFN-259-1116

Louden Machinery Company, Jefferson County, Iowa.

1927 FIRE INSURANCE MAP

ARROW LOCATES PROPERTY



Source: Sanborn Map Company, Fairfield, Iowa, 1927, p. 13.



United States Department of the Interior
National Park Service

NATIONAL REGISTER OF HISTORIC PLACES
CONTINUATION SHEET

Section number 7 Page 11

CFN-259-1116

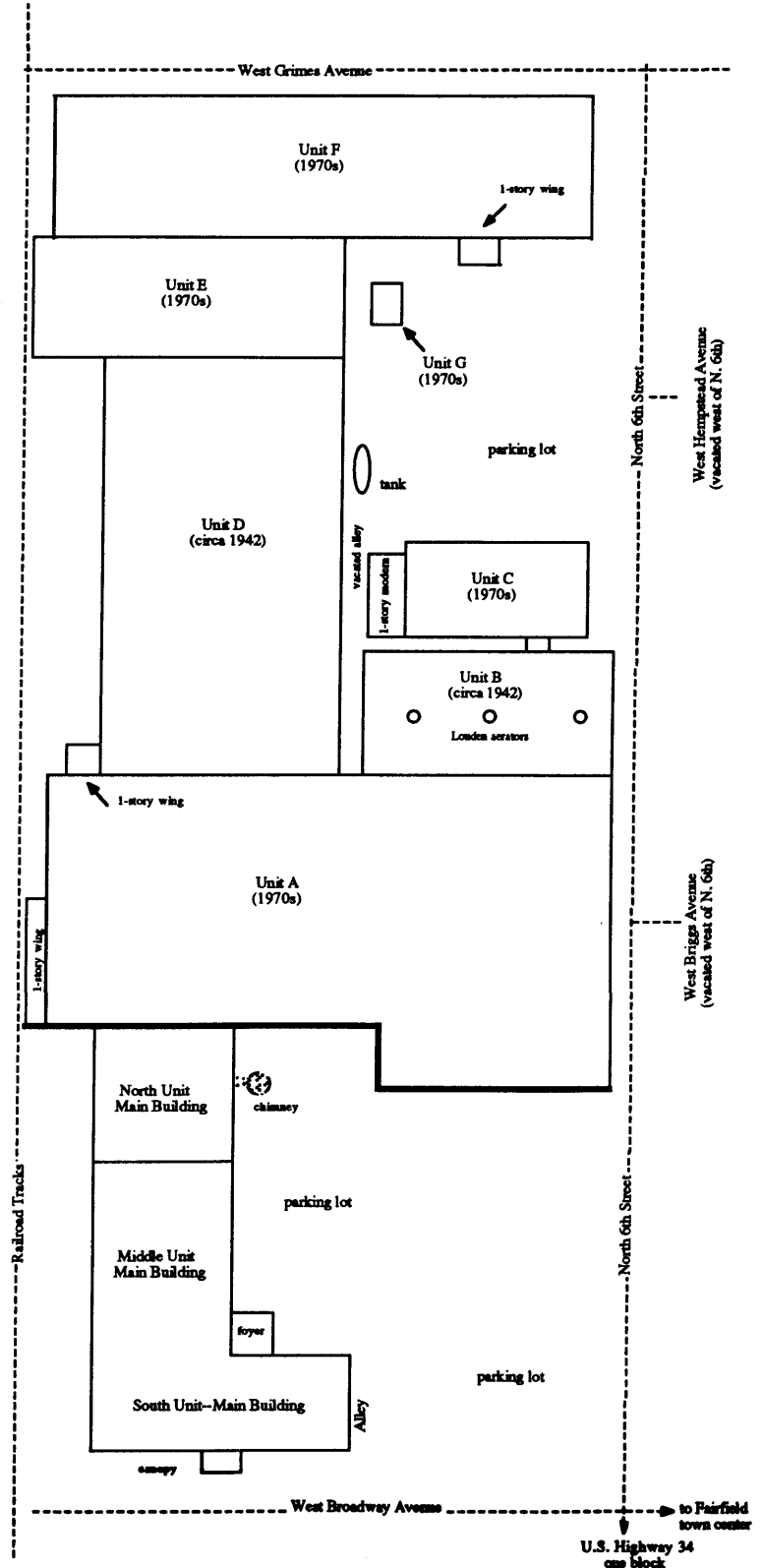
Louden Machinery Company, Jefferson County, Iowa.

FACTORY AND ITS RESOURCES

THIS PLAN IDENTIFIES THE UNITS DESCRIBED IN THE TEXT ABOVE.

The bold lines separate the improvements owned by the Broadway Development Corporation from those owned by ACCO.

Source: Sidwell Aerial Photograph and William C. Page computer.



United States Department of the Interior
National Park Service

NATIONAL REGISTER OF HISTORIC PLACES CONTINUATION SHEET

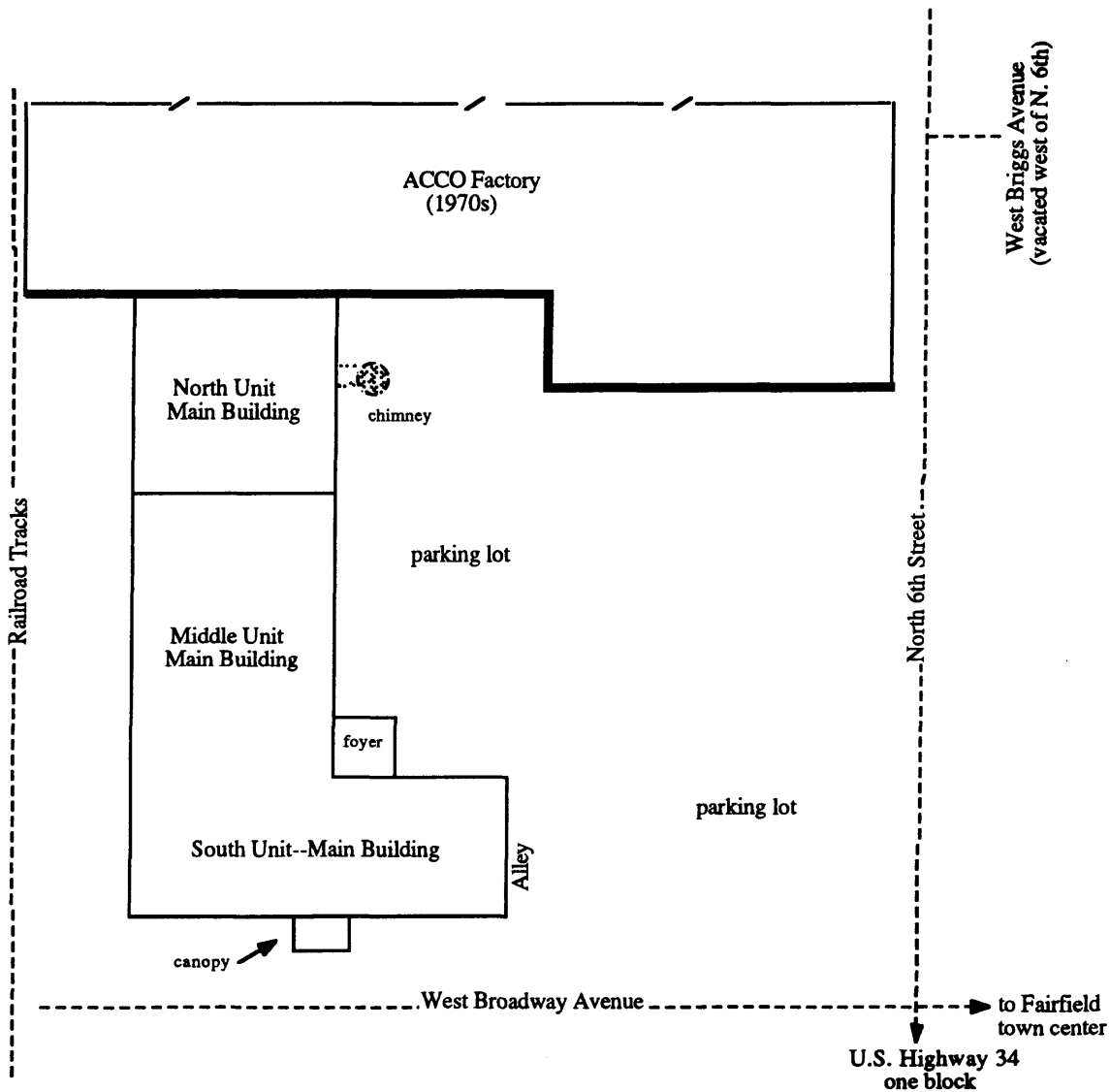
Section number 7 Page 12

CFN-259-1116

Louden Machinery Company, Jefferson County, Iowa.

FOOTPRINT OF HISTORIC FACTORY

ACCO FACTORY STANDS ADJACENT TO THE NORTH



Source: Sidwell Aerial Photograph and William C. Page computer.



**United States Department of the Interior
National Park Service**

**NATIONAL REGISTER OF HISTORIC PLACES
CONTINUATION SHEET**

Section number 8 Page 13

CFN-259-1116

Louden Machinery Company, Jefferson County, Iowa.

SIGNIFICANT PERSON

William Louden
R. B. Louden

SUMMARY OF SIGNIFICANCE

Constructed circa 1900 and expanded circa 1910, the Loudon Machinery Company possesses local historical significance, under National Register Criterion A. The building calls attention to the contributions of that firm to the agricultural and industrial history of the nation, state, and locality. The firm patented numerous labor-saving devices for farm and industry and manufactured these products in this building. (See cover document.)

The Loudon Machinery Company is significant, under National Register Criterion B. The factory building calls attention to the inventive genius of William Loudon and the executive abilities of R. B. Loudon. These two brothers founded and shaped the destiny of the Loudon Machinery Company in its rise as an international industrial concern. During four decades of their productive lives, William and R. B. Loudon worked in this building. (See cover document.)

The Loudon Machinery Company is significant, under National Register Criterion A, for its association with the firm's Architectural Department. (See cover document.) Housed in this factory, that barn planning service ranked as one of the nation's leading designers of modern barns during the first half of the Twentieth Century. A number of Loudon's architects also designed institutional and residential buildings in Fairfield as private commissions. These architects included Guy A. Carpenter, C. Eugene Fleming, and Edward C. Peterke.

The period of significance, under Criterion A, for the Loudon Machinery Company is circa 1900 through 1948, the time within the National Register's 50-year requirement in which the company at this historic site devised and manufactured its products for agriculture and industry. The period of significance, under Criterion B, is circa 1900 through 1939, the time when William Loudon and R. B. Loudon worked there.

The property contains four resources for this nomination. The factory complex is counted as one contributing resource and classified as a building. The free-standing chimney is counted as one contributing resource and classified as a structure. A modern garage and a modern fuel storage tank are each counted as one noncontributing resource. The garage is classified as a building and the tank is classified as an object.

AGRICULTURE AND INDUSTRY

The Loudon Machinery Company of Fairfield, Iowa, is significant to the agricultural and industrial history of the United States for a number of reasons, under National Register Criteria A and B. Its co-founder and

United States Department of the Interior
National Park Service

NATIONAL REGISTER OF HISTORIC PLACES CONTINUATION SHEET

Section number 8 Page 14

CFN-259-1116

Louden Machinery Company, Jefferson County, Iowa.

inventive genius, William Louden, patented in 1867 and later improved an overhead track capable of handling heavy farm products by a conveying trolley. The executive ability of R. B. Louden, another of the firm's co-founders, enabled the company to emerge from bankruptcy and flourish. Together, these brothers subsequently made important contributions to American agriculture. During the last quarter of the Nineteenth Century, for example, Louden hay loading equipment provided labor-saving devices that directly led to a revolution in barn design. The Louden Manufacturing Company also established a free barn planning service in 1906, which helped popularize efficiency in American barns.

The Louden Brothers also made significant contributions to American industry. Assisted by an able engineering staff, the growing Louden Machinery Company developed its concept of the overhead track into an industrial "monorail system." During the period of rapid expansion of heavy industry and manufacturing in America in the 1920s and the application of the revolutionary assembly-line process, major American corporations came to use Louden monorail systems for overhead lifting, carrying, and handling heavy materials for production. By 1926, such industrial giants as Allis-Chalmers, Continental Motors, and General Motors were using Louden monorail equipment.

The recognition that the overhead track concept could be applied to the wider needs of industry--coupled with the Louden firm's ability to manufacture metal machinery and engineer custom designs for its operation and installation--propelled the Louden Machinery Company far beyond its original purpose as a farm equipment manufacturer. During World War II, for example, Louden overhead handling systems were used in Oakridge, Tennessee, to manufacture the atomic bomb. During the 1960s, NASA's Apollo space program used Louden equipment. Throughout its history, the Louden Machinery Company maintained its main factory and headquarters in Fairfield, Iowa. Agricultural products--such as hay loading equipment, dairy barn stanchions and stalls, and the barn planning service--remained staples for the firm over many years. But today, long after many of Louden's competitors in farm equipment have ceased operations, the need for monorail systems in industry remains, and the modern portions of the plant in Fairfield (which is excluded from this nomination) continues to manufacture them.

From its original construction circa 1900 and its subsequent expansion, this building formed the corporate headquarters and main factory for the Louden Machinery Company. Although the firm grew in size, opened branch offices across the nation and abroad, and established another factory in Guelph, Ontario, Canada, this building in Fairfield best calls attention to the firm's contributions to the agricultural and industrial history of America.

ARCHITECTURAL DEPARTMENT

The Louden Machinery Company calls attention to the contributions of that firm's Architectural Department to the improvement of modern barns in America and to the dissemination of information about good barn design. The firm stood at a transition point in barn framing techniques--between the use of heavy timber and the use of common-milled lumber. Louden invented new framing techniques and popularized their use through extensive catalog publications. These contributions brought a more efficient use of wood and space to American barn designs. For example, Louden patented a bent-board type of laminated rafter for

United States Department of the Interior
National Park Service

NATIONAL REGISTER OF HISTORIC PLACES CONTINUATION SHEET

Section number 8 Page 15

CFN-259-1116

Louden Machinery Company, Jefferson County, Iowa.

barn construction. (See cover document.) In a discussion of "modern barns" (those designed and built with common-milled lumber), architectural historian Richard Rawson notes:

In 1917, the Loudon Machinery Company produced *Louden Barn Plans*, a book designed to acquaint farmers in the United States and Canada with up-to-date techniques for building spacious, well-ventilated, well-lit, economical barns. Loudon's engineers designed both standard and custom barns, and the Loudon plant manufactured and supplied the stanchions, windows, ventilators, carts, doors, and other hardware. Cutaway [of one of the catalog designs] reveals the enormous expanse of clear space under the roof trusses in a Loudon-designed dairy barn. As in the balloon framing of houses, the second-floor foists are nailed to the sides of studs and rest on a 2" x 6" ribbon. (Rawson:136)

Rawson's book also features the Department of Natural Resources of the Canadian Pacific Railroad in his analysis of modern barn design in North America. The highlighting of the Loudon Machinery Company as an example of American leadership within an international context lends further authority to the firm's importance.

The Architectural Department of the firm may have contributed to the architectural development of Fairfield. A number of its employees designed residential and institutional buildings as private commissions, thereby enriching local architecture. These architects included Guy A Carpenter, C. Eugene Fleming, and Edward C. Peterke. (See the following nominations in this MPS: First Methodist Episcopal Church, R. R. and Antoinette Loudon House, First Church of Christ Scientist.)

REPRESENTATION IN OTHER CULTURAL RESOURCES SURVEYS

This factory was surveyed on Iowa Site Inventory Form #51-012-21 in 1981 as part of an architectural survey of Fairfield, Iowa, by the Area XV Regional Planning Commission. That survey's comments included the following:

Three story brick industrial building that is typical of the late 19th century. It is a very straight forward design with only two decorative elements setting the office wing apart from the factory itself: the paired windows under a single segmental arch; and the denticulated brick work found on the cornice, and above the second floors windows. The only apparent alteration is a major one--the front entrance. This is an important building in Fairfield's history and should definitely be preserved. Note: While I would not nominate this structure solely on architectural significance, I would support a nomination with historical significance as the primary aspect. MNN (*Architectural and Historical Surveys of Jefferson County, Iowa*)

**United States Department of the Interior
National Park Service**

**NATIONAL REGISTER OF HISTORIC PLACES
CONTINUATION SHEET**

Section number 8 Page 16

CFN-259-1116

Louden Machinery Company, Jefferson County, Iowa.

The Area XV Regional Planning Commission's historical survey determined that the Loudon Machinery Company was eligible for nomination to the National Register because of its industrial significance. (*Architectural and Historical Surveys of Jefferson County, Iowa*)

This factory was also surveyed in 1996 as part of the "Louden Machinery Company, Fairfield, Iowa" hybrid reconnaissance and intensive surveys of that historic context within Jefferson County, Iowa. As one resource within that survey, this factory was evaluated as individually eligible, under Criterion A, for nomination to the National Register of Historic Places. The State Historical Society of Iowa was informed of this determination through the survey report.

RECOMMENDATIONS FOR FUTURE RESEARCH AND REGISTRATION

The Loudon Machinery Company is probably significant nationally and statewide. At the present time, insufficient research and historical studies are available to provide a context to evaluate such claims. As the nation's agricultural history is harvested, this information should be used to reevaluate this nomination and the Loudon Machinery Company's potential for national significance.

POTENTIAL FOR HISTORICAL ARCHAEOLOGY

Although the site's potential for historic archaeology is, as yet, unevaluated, the identification of earlier structures associated with this property on this site is slight. Prior to 1892, the factory was located several blocks away and the land use on this site was residential.

United States Department of the Interior
National Park Service

NATIONAL REGISTER OF HISTORIC PLACES CONTINUATION SHEET

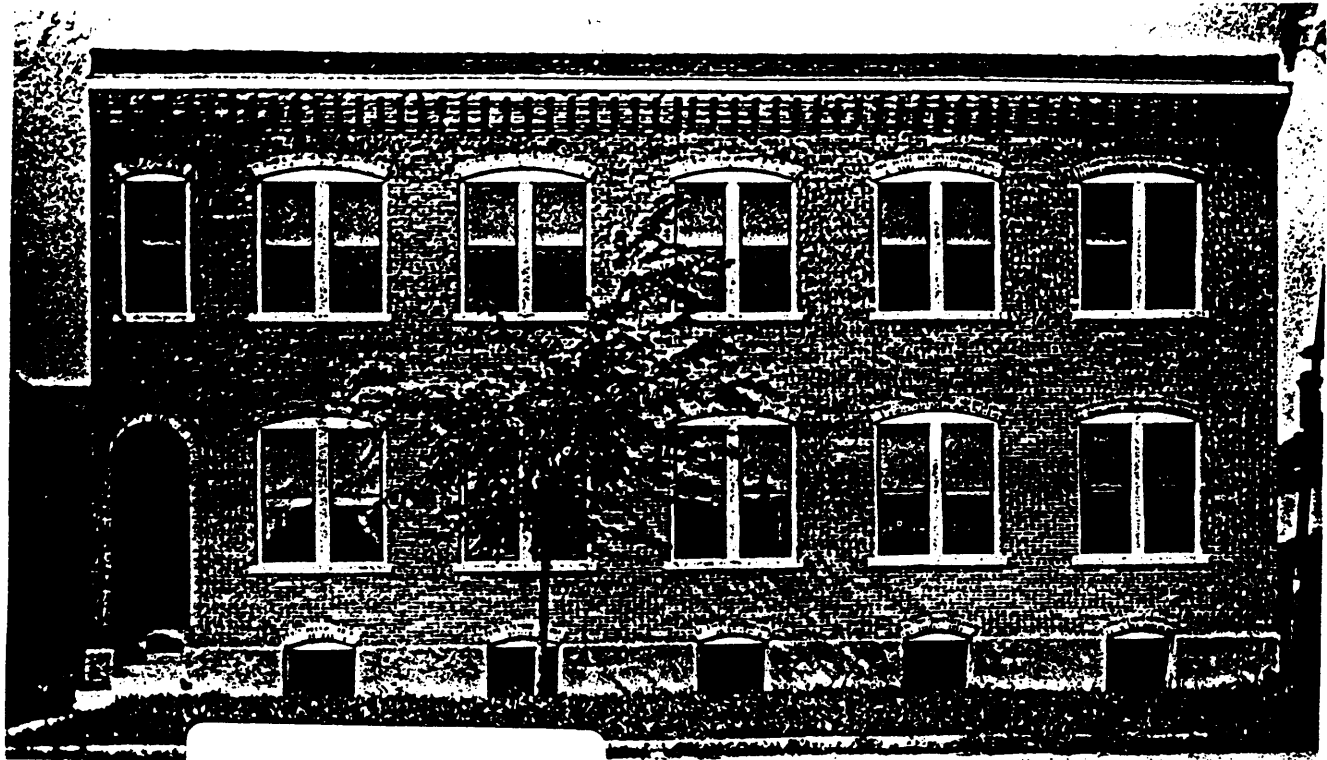
Section number 8 Page 17

CFN-259-1116

Louden Machinery Company, Jefferson County, Iowa.

LOUDEN MACHINERY COMPANY

CIRCA 1900



Source: Private collection.

United States Department of the Interior
National Park Service

NATIONAL REGISTER OF HISTORIC PLACES CONTINUATION SHEET

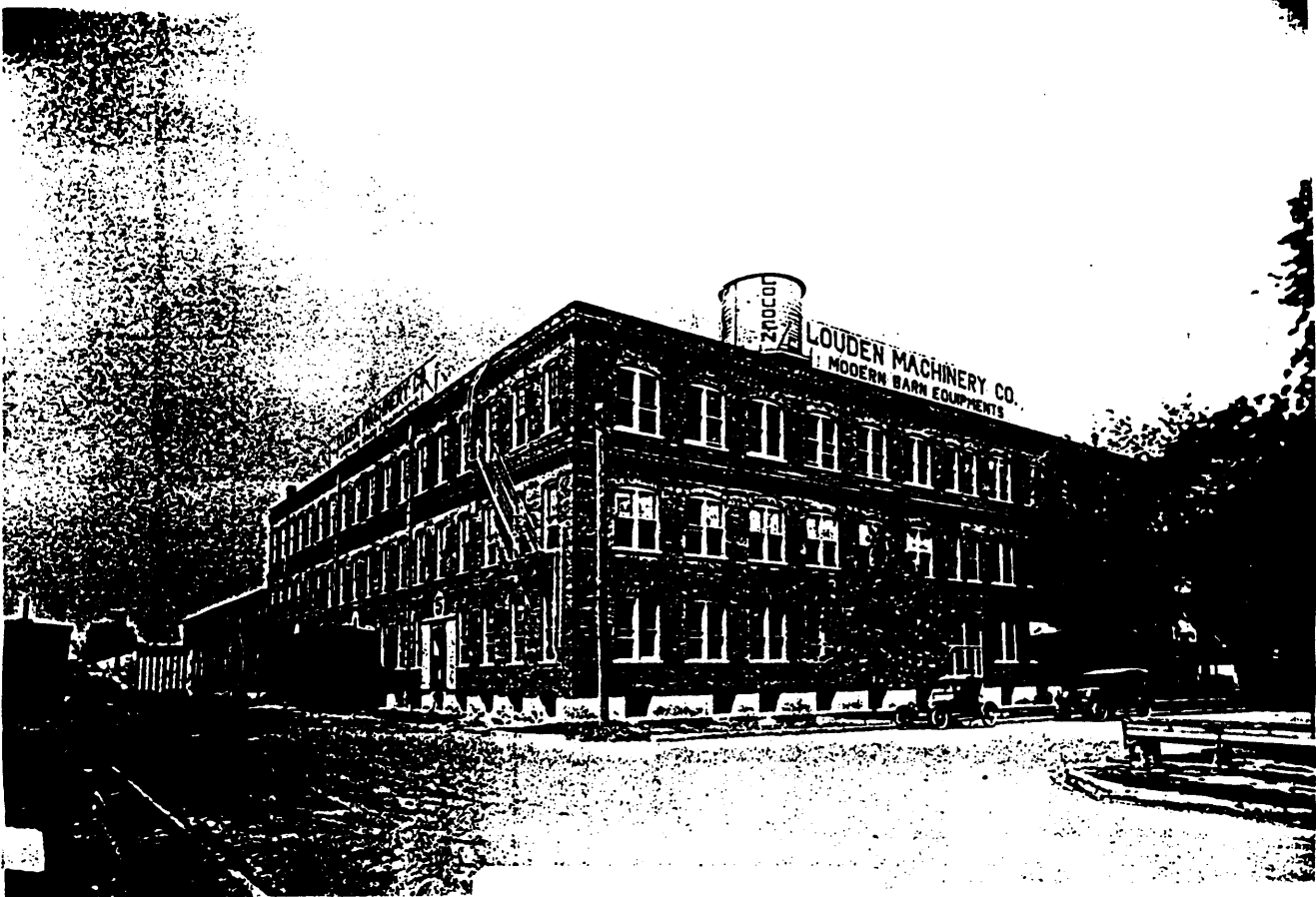
Section number 8 Page 18

CFN-259-1116

Louden Machinery Company, Jefferson County, Iowa.

LOUDEN MACHINERY COMPANY

CIRCA 1920



Source: Private collection.

**United States Department of the Interior
National Park Service**

**NATIONAL REGISTER OF HISTORIC PLACES
CONTINUATION SHEET**

Section number 9 Page 19

CFN-259-1116

Louden Machinery Company, Jefferson County, Iowa.

BIBLIOGRAPHY

Please refer to Section I of the Multiple Property Documentation Form for complete bibliography.

PRIMARY

Sanborn Fire Insurance Maps for Fairfield, Iowa.
1885, 1892, 1899, 1907, 1913, and 1927.

SECONDARY

Architectural and Historical Surveys of Jefferson County, Iowa; Area XV Regional Planning Commission; 1981. Reports on file in the Community Programs Bureau of the State Historical Society of Iowa; Des Moines, Iowa.

Jefferson County Assessor's Office, Assessor's Property Record Card.

Page, William C., and Joanne R. Walroth; *The Loudon Machinery Company, Fairfield, Iowa; Intensive cultural resources report prepared for and on file at the Jefferson County Historic Preservation Commission and State Historical Society of Iowa, Des Moines; 1996.*

Rawson, Richard; *The Old House Book of Barn Plans; New York; 1990; Sterling Publishing Co., Inc.*

Sidwell, Company, The; Chicago, Illinois; Aerial photograph; Spring 1996. Courtesy Jefferson County Auditor's Office.

ORAL HISTORY

Louden, Thomas A.; Oral informant interview with William C. Page, April 12, 1996.

United States Department of the Interior
National Park Service

NATIONAL REGISTER OF HISTORIC PLACES
CONTINUATION SHEET

Section number 10 Page 20

CFN-259-1116

Louden Machinery Company, Jefferson County, Iowa.

VERBAL BOUNDARY DESCRIPTION

All of Block 3, all of Block 4, and all of Block 9 (except the south 220 feet of the west 153.54 feet) in Gage's Addition to the City of Fairfield, Iowa. Also includes the vacated portion of Briggs Avenue and Hempstead Avenue between North 6th and North 7th Streets.

BOUNDARY JUSTIFICATION

Contains all land associated historically with the resource and the attached modern improvements to it.

**United States Department of the Interior
National Park Service**

**NATIONAL REGISTER OF HISTORIC PLACES
CONTINUATION SHEET**

Section number 10 **Page** 21

CFN-259-1116

Louden Machinery Company, Jefferson County, Iowa.

LIST OF PHOTOGRAPHS

1. Louden Machinery Company
607-609 Broadway Avenue
Fairfield, IA 52556
Looking northeast
William C. Page, Photographer
January 29, 1998
2. Louden Machinery Company
607-609 Broadway Avenue
Fairfield, IA 52556
Looking northwest
William C. Page, Photographer
January 29, 1998
3. Louden Machinery Company
607-609 Broadway Avenue
Fairfield, IA 52556
View of Unit A, Chimney, & North Unit of Main Building
Looking northwest
Marni Mellen, Photographer
June 2, 1998
4. Louden Machinery Company
607-609 Broadway Avenue
Fairfield, IA 52556
Looking south
View of Unit C, Unit B, & Unit A
Marni Mellen, Photographer
June 2, 1998
5. Louden Machinery Company
607-609 Broadway Avenue
Fairfield, IA 52556
Looking southwest
View of Unit D and Tank with Unit A in background
Marni Mellen, Photographer
June 2, 1998

**United States Department of the Interior
National Park Service**

**NATIONAL REGISTER OF HISTORIC PLACES
CONTINUATION SHEET**

Section number 11 **Page** 22

CFN-259-1116

Louden Machinery Company, Jefferson County, Iowa.

PROPERTY OWNERS

1. **Broadway Development Corporation
607-609 Broadway Avenue
Fairfield, IA 52556
515-472-0400**

2. **ACCO-Chain & Lifting Products, Inc.
200 North 6th Street
Fairfield, IA 52556
515-472-5171**