



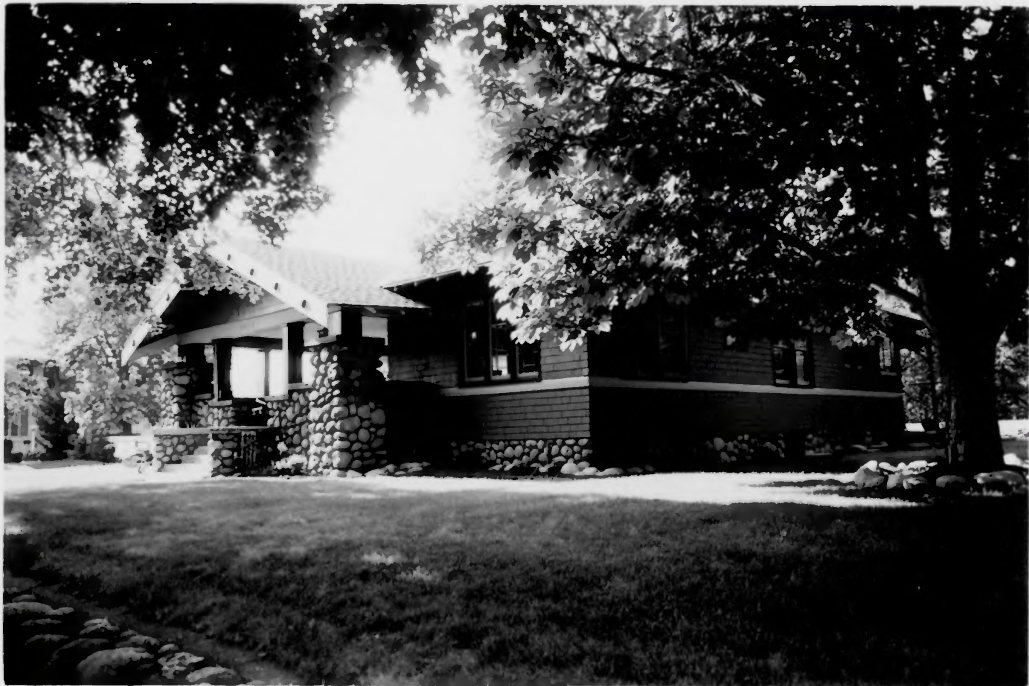
0

1 2 3 4 5 6 7 8 9 10 11 12 13 14 15 16 17 18 19 20 21 22 23 24 25 26 27 28 29 30 31 32 33 34 35 36 37 38 39 40 41 42 43 44 45 46 47 48 49 50 51 52 53 54 55 56 57 58 59 60 61 62 63 64 65 66 67 68 69 70 71 72 73 74 75 76 77 78 79 80 81 82 83 84 85 86 87 88 89 90 91 92 93 94 95 96 97 98 99 100



②

Handwritten text, possibly a signature or name, appearing as a series of connected loops and strokes.





Handwritten text, possibly a signature or a list of names, written in a cursive script. The text is arranged in two lines and is significantly faded and difficult to read. The first line appears to contain several names or words, and the second line continues the list or signature.





Handwritten text, possibly a list or notes, consisting of several lines of illegible script. The text is written in dark ink on a light-colored background. The lines are roughly horizontal and contain various characters and symbols that are difficult to decipher due to the low resolution and fading of the document.











The first part of the document discusses the importance of maintaining accurate records of all transactions. It emphasizes that every entry should be supported by a valid receipt or invoice. This ensures transparency and allows for easy verification of the data.

In the second section, the author outlines the various methods used to collect and analyze the data. This includes both primary and secondary sources, as well as the specific techniques employed for data processing and analysis.

The third part of the document provides a detailed overview of the results obtained from the study. It includes a summary of the key findings and a discussion of their implications for the field. The author also addresses any limitations of the study and suggests areas for future research.

Finally, the document concludes with a series of recommendations based on the findings. These recommendations are intended to guide practitioners and researchers in their work, ensuring that the lessons learned from this study are effectively applied.





Handwritten text, possibly a list or notes, consisting of several lines of cursive script. The text is very faint and difficult to decipher, but appears to be organized into two main sections or paragraphs.