

1017

HABS/HAER INVENTORY

See "HABS/HAER Inventory Guidelines" before filling out this card.

1. NAME(S) OF STRUCTURE

Boulder Creek Bridge
(Wickenburg Bridge (before move))

ADOT: 0193

3. DATE(S) OF CONSTRUCTION

1920; trusses moved, 1937

See continuation sheet

2. LOCATION

State Highway 88 over Boulder Creek; milepost: 211.05
2 miles northwest of Tortilla Flat; unplatted T2N R9E
Maricopa County, Arizona

4. USE (ORIGINAL/CURRENT)

roadway bridge / roadway bridge

5. RATING

NRHP eligible: local significance

6. CONDITION

good; sufficiency rating: 62.5

owner: Arizona Department of Transportation

7. DESCRIPTION

span number : 4	superstructure: riveted steel, 9-panel Parker and 6-panel Pratt through trusses
span length : 180.0'	substructure : concrete abutments and wingwalls w/ spill-through concrete piers
total length: 488.0'	floor/decking : concrete deck over steel stringers
roadway wdt.: 15.0'	other features: upper chord: 2 channels w/ cover plate and webbing; lower chord: 2 channels w/ batten plates (Parker), 2 angles w/batten plates (Pratt); vertical: 2 channels w/ webbing; diagonal: wide flange (Parker), 2 angles w/ webbing; strut: wide flange (Parker), 2 angles w/ batten plates (Pratt); floor beam: I beam; lateral bracing: 1 angle; steel angle guardrails

8. HISTORICAL DATA

In 1914, Maricopa County erected a 4-span concrete bridge to carry the Ocean-to-Ocean Highway over the Hassayampa River at Wickenburg. When that bridge suffered extensive damage during the Thanksgiving flood of 1916, the Arizona Highway Department engineered a 3-span Pratt through truss with concrete deck and piers which carried the spans at twice the height of the previous bridge. Designated Federal Aid Project 31, the construction was to be funded with equal shares of federal aid and the Maricopa County portion of the State Road Fund. In 1920, AHD contracted with Allied Contractors of Omaha to fabricate and erect the trusses for \$26,097; a state work force poured the concrete substructure and deck, completing the bridge that year. In 1937, AHD again replaced the Wickenburg bridge, this time with a steel deck girder. The trusses were then dismantled, combined with a Parker through truss which AHD had designed for LaBarge Creek, and re-erected over Boulder Creek on the Apache Trail. The Boulder Creek Bridge has since functioned with only minor super-structural alterations.

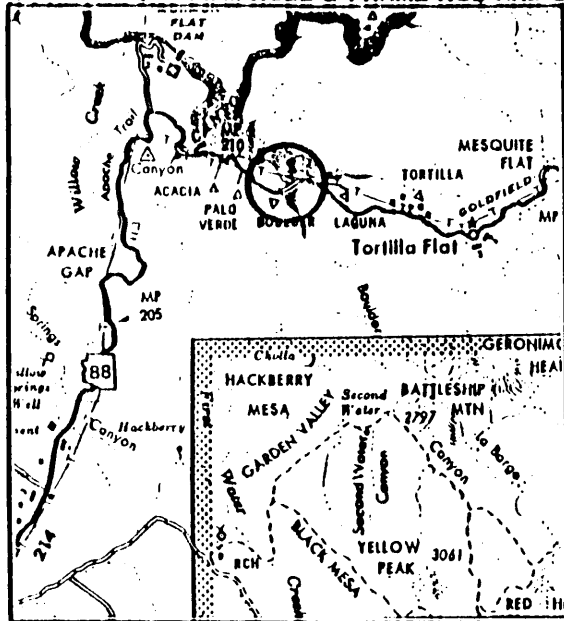
9. SIGNIFICANCE

Located at the intersection of two of Arizona's most important highways, the Wickenburg crossing of the Hassayampa River was historically one of the most strategically important crossings in the state. It proved to be starcrossed, however. "Previous efforts to construct and maintain this bridge," Arizona State Engineer Thomas Maddock stated in 1921, "have cost the taxpayers of Maricopa County something over \$20,000, together with a part-time loss of use. This department contemplates an additional expenditure of about \$70,000, making a total of over \$90,000. A properly designed bridge in the first place would have saved \$60,000 and much inconvenience." The Wickenburg truss was one of Arizona's most important bridges in the 1920s and 1930s. The subsequent move to another noteworthy road, the Apache Trail, exemplifies the portable nature of trusses. One of the two multi-span through trusses in the inventory, the Boulder Creek Bridge is one of Arizona's more significant vehicular structures.

1017

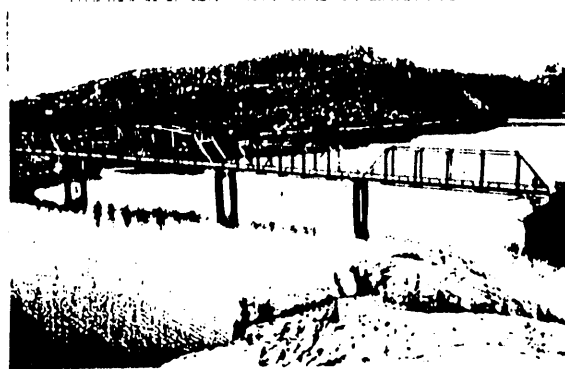
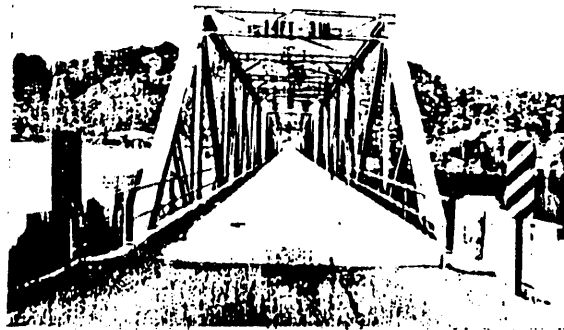
10. NAME(S) OF STRUCTURE
Boulder Creek Bridge

11. PHOTOS (W/ FILM ROLL & FRAME NO.) AND SKETCH MAP OF LOCATION



LOCATION MAP

TAKEN FROM DEPARTMENT OF TRANSPORTATION
GENERAL HIGHWAY MAP



Bridge Record, Arizona State Highway System: 0193; Structures Section, Arizona Department of Transportation, Phoenix AZ. Fourth Biennial Report of the State Engineer of Arizona, 1918-1920, (Phoenix: Republican Print Shop: 1921), pages 46, 62, 68-9.

Fifth Biennial Report of the State Engineer of Arizona, 1920-1922, (n.p., 1922), page 51.

Sixth Biennial Report of the State Engineer of Arizona, 1922-1924, (Phoenix: Manufacturing Stationers, Inc., 1924), page 129.

Field inspection by Clayton Fraser, 20 February 1987.

13. INVENTORIED BY:

AFFILIATION

DATE

Clayton B. Fraser

Fraserdesign Loveland Colorado

1 April 1987

United States Department of the Interior
National Park Service

FEB 14 1989

National Register of Historic Places Continuation Sheet

Section number 3 Page 1

Boulder Creek Bridge: Period of significance: 1937-1939. Period of significance begins with the construction of the bridge (relocation of trusses to present location) and extends through the end of the historic period, in 1939.