



United States Department of the Interior
National Park Service

NATIONAL REGISTER OF HISTORIC PLACES
REGISTRATION FORM

This form is for use in nominating or requesting determinations for individual properties and districts. See instructions in How to Complete the National Register of Historic Places Registration Form (National Register Bulletin 16A). Complete each item by marking "X" in the appropriate box or by entering the information requested. If any item does not apply to the property being documented, enter "N/A" for "not applicable." For functions, architectural classification, materials, and areas of significance, enter only categories and subcategories from the instructions. Place additional entries and narrative items on continuation sheets (NPS Form 10-900a). Use a typewriter, word processor, or computer, to complete all items.

1. Name of Property

historic name Crystal River Old City Hall

other names/site number Coastal Heritage Museum/CI1045

2. Location

street & number 532 North Citrus Avenue N/A not for publication

city or town Crystal River N/A vicinity

state FLORIDA code FL county Citrus code 017 zip code 34428

3. State/Federal Agency Certification

As the designated authority under the National Historic Preservation Act, as amended, I hereby certify that this nomination request for determination of eligibility meets the documentation standards for registering properties in the National Register of Historic Places and meets the procedural and professional requirements set forth in 36 CFR Part 60. In my opinion, the property meets does not meet the National Register criteria. I recommend that this property be considered significant nationally statewide locally. (See continuation sheet for additional comments.)

[Signature] Apr. 15, 1998
Signature of certifying official/Title Date

Florida State Historic Preservation Officer, Division of Historical Resources
State or Federal agency and bureau

In my opinion, the property meets does not meet the National Register criteria. (See continuation sheet for additional comments.)

Signature of certifying official/Title Date

State or Federal agency and bureau

4. National Park Service Certification

I hereby certify that the property is:

- entered in the National Register See continuation sheet
- determined eligible for the National Register See continuation sheet.
- determined not eligible for the National Register See continuation sheet.
- removed from the National Register.
- other, (explain) _____

[Signature] 5/29/98
Signature of the Keeper Date of Action
Edson H. Beall

CRYSTAL RIVER OLD CITY HALL
Name of Property

CITRUS, FLORIDA
County and State

5. Classification

Ownership of Property
(Check as many boxes as apply)

- private
- public-local
- public-State
- public-Federal

Category of Property
(Check only one box)

- buildings
- district
- site
- structure
- object

Number of Resources within Property
(Do not include any previously listed resources in the count)

Contributing	Noncontributing	
1	0	buildings
0	0	sites
0	0	structures
0	0	objects
1	0	total

Name of related multiple property listings
(Enter "N/A" if property is not part of a multiple property listing.)

Number of contributing resources previously listed in the National Register

N/A

0

6. Function or Use

Historic Functions
(Enter categories from instructions)

GOVERNMENT/City Hall/Jail/Firehouse

Current Functions
(Enter categories from instructions)

RECREATION and CULTURE/Museum

7. Description

Architectural Classification
(Enter categories from instructions)

SPANISH MISSION

Materials
(Enter categories from instructions)

foundation CONCRETE

walls NATIVE LIMESTONE

roof ASPHALT SHINGLE

other STONE

Narrative Description

(Describe the historic and current condition of the property on one or more continuation sheets.)

8. Statement of Significance

Applicable National Register Criteria

(Mark "x" in one or more boxes for the criteria qualifying the property for National Register listing.)

- A** Property is associated with events that have made a significant contribution to the broad patterns of our history.
- B** Property is associated with the lives of persons significant in our past.
- C** Property embodies the distinctive characteristics of a type, period, or method of construction or represents the work of a master, or possesses high artistic values, or represents a significant and distinguishable entity whose components lack individual distinction.
- D** Property has yielded, or is likely to yield information important in prehistory or history.

Criteria Considerations

(Mark "x" in all the boxes that apply.)

Property is:

- A** owned by a religious institution or used for religious purposes.
- B** removed from its original location.
- C** a birthplace or grave.
- D** a cemetery.
- E** a reconstructed building, object, or structure.
- F** a commemorative property.
- G** less than 50 years of age or achieved significance within the past 50 years

Narrative Statement of Significance

(Explain the significance of the property on one or more continuation sheets.)

9. Major Bibliographical References

Bibliography

Cite the books, articles, and other sources used in preparing this form on one or more continuation sheets.)

Previous documentation on file (NPS):

- preliminary determination of individual listing (36 CFR 36) has been requested
- previously listed in the National Register
- previously determined eligible by the National Register
- designated a National Historic Landmark
- recorded by Historic American Buildings Survey # _____
- recorded by Historic American Engineering Record

Areas of Significance

(Enter categories from instructions)

ARCHITECTURE

POLITICS/GOVERNMENT

Period of Significance

1939 - 1948

Significant Dates

1939

Significant Person

N/A

Cultural Affiliation

N/A

Architect/Builder

Unknown/Works Progress Administration

Primary location of additional data:

- State Historic Preservation Office
- Other State Agency
- Federal agency
- Local government
- University
- Other

Name of Repository

CRYSTAL RIVER OLD CITY HALL
Name of Property

CITRUS, FLORIDA
County and State

10. Geographical Data

Acreage of Property Less than 1 acre

UTM References

(Place additional references on a continuation sheet.)

1	1	7	3	4	4	6	4	0	3	1	9	7	6	2	0
	Zone		Easting						Northing						
2															

3															
	Zone		Easting						Northing						
4															

See continuation sheet

Verbal Boundary Description

(Describe the boundaries of the property on a continuation sheet.)

Boundary Justification

(Explain why the boundaries were selected on a continuation sheet.)

11. Form Prepared By

name/title Catherine Ebert, City Councilmember; Gary V. Goodwin, Historic Preservation Planner

organization Bureau of Historic Preservation date April, 1998

street & number R.A. Gray Building, 500 S. Bronough Street telephone (904) 487-2333

city or town Tallahassee state Florida zip code 32399-0250

Additional Documentation

Submit the following items with the completed form:

Continuation Sheets

Maps

A **USGS map** (7.5 or 15 minute series) indicating the property's location.

A **Sketch map** for historic districts and properties having large acreage or numerous resources.

Photographs

Representative **black and white photographs** of the property.

Additional items

(check with the SHPO or FPO for any additional items)

Property Owner

(Complete this item at the request of SHPO or FPO.)

name The City of Crystal River

street & number 123 N.W. Highway 19 telephone (352) 795-4216

city or town Crystal River state Florida zip code 34428

Paperwork Reduction Act Statement: This information is being collected for applications to the National Register of Historic Places to nominate properties for listing or determine eligibility for listing, to list properties, and amend listings. Response to this request is required to obtain a benefit in accordance with the National Historic Preservation Act, as amended (16 U.S.C. 470 *et seq.*).

Estimated Burden Statement: Public reporting burden for this form is estimated to average 18.1 hours per response including time for reviewing instructions, gathering and maintaining data, and completing and reviewing the form. Direct comments regarding this burden estimate or any aspect of this form to the Chief, Administrative Services Division, National Park Service, P.O. Box 37127, Washington, DC 20013-7127; and the Office of Management and Budget, Paperwork Reduction Projects (1024-0018), Washington, DC 20503.

**United States Department of the Interior
National Park Service**

**NATIONAL REGISTER OF HISTORIC PLACES
CONTINUATION SHEET**

Section number 7 Page 1

**CRYSTAL RIVER OLD CITY HALL
Crystal River, Citrus County, Florida**

SUMMARY

The Crystal River Old City Hall at 532 North Citrus Avenue, Crystal River, Florida, is a single-story masonry building with a porte-cochere on the north side. The Spanish Mission style building was constructed in 1939 and designed as a municipal facility to house fire and police departments, a jail with three cells, the city manager and city clerk's offices, and a city council meeting place. The exterior of the building exhibits the Spanish Mission style which was popular in Florida in the 1920s and 1930s. At present, the building serves as the Coastal Heritage Museum, operated by the Citrus County Historical Society and the Citrus County Office of Historical Resources. The original design, workmanship, materials, location, and setting of the building remain intact.

SETTING

The Town of Crystal River is found approximately 150 miles southeast of Tallahassee, just off U.S. Highway 19 on the southern portion of Highway 495, otherwise known as Citrus Avenue. The old city hall is located on Citrus Avenue, the principal north-south thoroughfare in Crystal River. In 1939, Citrus Avenue was the downtown shopping area and central business district. U.S. Highway 19, built in the 1940s, intersects Citrus Avenue, altering the original traffic patterns and interrupting the original linkage of the old business district. The building is set on a very small parcel of land, with no more than three feet of side setbacks. There are no outbuildings. The property to the north was originally a post office, then became the office for the county newspaper. Since 1992 the building has been used for office space. Some of the residences built in the area have been converted to shops and offices. For several years the city has tried to revitalize Citrus Avenue with a new sidewalk and benches; however, there have been few changes on the street since 1939.

EXTERIOR

The only building in town built entirely of native limestone, the Crystal River Old City Hall is a plain, rectangular building with curvilinear, Mission style, parapets on the front and rear and a porte-cochere on the north side (Photo #1). The masonry exterior, a distinctive feature of the building, is completely stone with the exception of the wood frames around the windows and doors. The light tan stone, found locally in fields and nearby rock pits, is unfinished and very rough in texture. The gable roof is covered with asphalt shingles, and a limestone chimney is visible on the north side (Photo #2). The main (east) facade is dominated by the curved front parapet. The parapet is ornamented with 1939 (the year of construction), a circular louvered vent, and the name City Hall (the building's original function) (Photo #3). A simple cornice molding tops the parapet. Two original, 4/1 double-hung sash windows remain on either side of the original glass and wood paneled entrance door. Simple decorative lintels are located above the windows and the entrance. Originally, there was a gabled roof over the front door and a shed roof over the opening with a 3-light transom that was the bay for the fire engine. A flat

**United States Department of the Interior
National Park Service**

**NATIONAL REGISTER OF HISTORIC PLACES
CONTINUATION SHEET**

Section number 7 Page 2

**CRYSTAL RIVER OLD CITY HALL
Crystal River, Citrus County, Florida**

awning now spans the entire width of the facade, and the fire engine bay has been enclosed (Photos #4 & 5). The north elevation has two large, 4/1 double hung sash windows, two doors that are now closed off, and a porte-cochere with a gable roof and exposed rafters (Photo #6). The west (rear) elevation features a curved parapet that is similar to the one on the main elevation, a centered circular louvered vent, and two small, square windows (Photo #7). A wood paneled door, sheltered by an original attached gabled roof, functions as a rear entrance, while another door, leading to the storeroom has been closed off (Photo #8). The south elevation has three small square windows in the west corner near the roofline. Each window has a lintel and sill, and one window has exterior metal bars (Photo #9).

INTERIOR

The interior was laid out with public spaces for the fire and police departments, city jail, city manager and city clerk's offices, and city council meeting space. The doors and windows are framed with wood molding. The walls are plaster over stone (Photo #10). The main interior space includes the old city hall area, which now serves as exhibit space for the Coastal Heritage Museum, operated by the Citrus County Historical Society and the Citrus County Office of Historical Resources (Photo #11). A large stone fireplace is located in the main room where the city hall once functioned (Photo #12). The floors in the two front rooms where the old city hall and firehouse were located are terrazzo, while cement floors are present throughout the remainder of the building. The original high ceilings are made of magnolia wood, a popular building material in the area, which helps to keep the building cool during warm weather.

ALTERATIONS

The dates of the alterations to the building are unknown, but are believed to have occurred before 1964. The original door for the fire engine and the 3-light transom have been replaced by a small window with two panes and a non-functioning door with three glass panes and a paneled wood bottom. Two doors on the north side and one door on the west side have been closed off. The original gabled roof with a king post over the entrance door and the shed roof over the firehouse doors have been replaced by a flat roofed awning that spans the entire width of the east facade.

**United States Department of the Interior
National Park Service**

**NATIONAL REGISTER OF HISTORIC PLACES
CONTINUATION SHEET**

Section number PHOTOS Page 1

**CRYSTAL RIVER OLD CITY HALL
Crystal River, Citrus County, Florida**

PHOTOGRAPHIC INVENTORY

1. Crystal River Old City Hall
2. 532 Citrus Avenue, Crystal River, Citrus County, Florida
3. Dave Benton
4. c.1939
5. Citrus County Historical Society
6. East (main), and north elevations, camera facing southwest.
7. Photo #1 of 14

1 through 3 are the same for the following photograph:

4. February, 1997
5. Citrus County Historical Society
6. East (main), and north elevations, camera facing southwest.
7. Photo #2 of 14

1 through 5 are the same for remaining photographs:

6. Detail of east elevation, camera facing west.
7. Photo #3 of 14

6. East and south elevations, camera facing northwest.
7. Photo #4 of 14

6. Detail of east elevation, front enclosure of fire engine bay.
7. Photo #5 of 14

6. North elevation showing porte-cochere, camera facing southwest.
7. Photo #6 of 14

6. West (rear) elevation, camera facing east.
7. Photo #7 of 14

6. West and south elevations showing west (rear) parapet, camera facing northeast.
7. Photo #8 of 14

**United States Department of the Interior
National Park Service**

**NATIONAL REGISTER OF HISTORIC PLACES
CONTINUATION SHEET**

Section number PHOTOS Page 2

**CRYSTAL RIVER OLD CITY HALL
Crystal River, Citrus County, Florida**

- 6. South elevation, camera facing northeast.
- 7. Photo #9 of 14

- 6. Interior showing original city hall area, camera facing southeast.
- 7. Photo #10 of 14

- 6. Interior showing original city hall area, camera facing west.
- 7. Photo #11 of 14

- 6. Interior detail showing original fireplace and mantel, camera facing north.
- 7. Photo #12 of 14

- 6. Interior showing original firehouse and city jail area, camera facing northeast.
- 7. Photo #13 of 14

- 6. Interior showing original city jail area, camera facing west.
- 7. Photo #14 of 14

**United States Department of the Interior
National Park Service**

**NATIONAL REGISTER OF HISTORIC PLACES
CONTINUATION SHEET**

Section number 8 Page 1

**CRYSTAL RIVER OLD CITY HALL
Crystal River, Citrus County, Florida**

SUMMARY

The Crystal River Old City Hall, located at 532 North Citrus Avenue is significant under Criteria A and C at the local level in the areas of Politics and Government, and Architecture. The natural limestone building is significant for its long association with local government and is a good representation of Mission style architecture, one of only three buildings in the town of Crystal River displaying the style. The building, built in 1939 as a Works Progress Administration project, reflects the impact of the Depression Era on Crystal River.

HISTORIC CONTEXT

Even though settlers first came to the Citrus County area in the 1820s, the area remained sparsely settled until after the Civil War. The enactment in 1842 of the Armed Occupation Act encouraged white settlers to enter the frontier territory of what is now Citrus County. This legislation provided that any man who built a house, cultivated five acres, and lived on the land for five years could claim a patent for 160 acres. On August 4, 1842 a permit was granted to Neil Ferguson, who then settled what is now Hunters Spring. By 1844, the area had been surveyed and settlers were streaming in. At that time, people seeking new opportunities came to this coastal frontier area to harvest the abundant timber and cultivate the land.

A significant person in the historic development of Citrus County was Austin S. Mann, a businessman who had lived in Ohio and New Jersey. Mann settled in the Crystal River area, where he practiced law and cultivated a 10-acre citrus grove, one of the largest in the area. He was elected state senator in 1883 for what was then Hernando County. On June 2, 1887, the legislature, led by Senator Mann, divided Hernando County into three new counties, the present-day Citrus, Pasco, and Hernando Counties.

In the winter of 1894-1895, a hard freeze ended citrus growing as a commercial industry in the county. A few years before the "Big Freeze", however, hard rock phosphate had been discovered in nearby locations. The shift from growing and shipping citrus to phosphate mining expanded the local economy. By the late 1890s, the Citrus County area was enjoying a "phosphate boom." The phosphate boom was accompanied and facilitated by the spread of the railroad system. An independently owned line, the Silver Springs, Ocala, and Gulf Railroad, chartered in 1877, extended from Ocala to Dunnellon early in 1888, then was built southwest to Crystal River and Homosassa later in that year. A combination of over thirty U.S. and foreign mining companies conducted mining operations by 1909. Mine workers were sought from as far away as Alabama, Georgia and South Carolina. Within a brief time, the population of Citrus County quickly grew to more than 10,000 people as new settlers and vacationers were coming into the area in increasing numbers.

The local phosphate boom, however, abruptly ended with the outbreak of World War I, because Germany had

**United States Department of the Interior
National Park Service**

**NATIONAL REGISTER OF HISTORIC PLACES
CONTINUATION SHEET**

Section number 8 Page 2

**CRYSTAL RIVER OLD CITY HALL
Crystal River, Citrus County, Florida**

been the largest importer of phosphate from Citrus County. As the mines closed, no alternative industry developed to replace phosphate. After World War I, the phosphate industry did not resume operations in Citrus County, because more easily processed soft-pebble deposits were developed further south, near Bartow and Mulberry. People looked elsewhere for work, and the population plummeted and remained fairly small until the 1960s.

HISTORIC SIGNIFICANCE

On April 20, 1857, the post office was established about 2 miles out from what is now Crystal River, with John E. Turkett as the first postmaster. The mail arrived by boat from Cedar Key. By 1860, the fishing and lumber industries were thriving. Cotton, vegetables and citrus products contributed greatly to the economy. The basis of a town was developing, and Crystal River boasted three roads: one south to Homosassa, one east to Inverness, and one northeast to Ocala. The town was named after the stream on whose banks it stands. Land was selling for as little as \$1.25 an acre; but the more desirable tracts commanded a much higher price tag of \$50.00 per acre. The close of the Civil War marked the beginning of a rapid development of the Florida citrus industry. By 1880, citrus growing and the lumber industry were firmly established as primary sources of livelihood. In 1886, the crop statewide reached a volume of one million boxes for the first time. That same year Crystal River was a bustling town of 200 people, supporting eight stores and other businesses, and two school houses. Crystal River became a town in 1903 and in 1923 adopted a city form of government. In spite of a fire in 1920 that destroyed a large part of the business section, by 1925, Crystal River had a population of 1200 that sustained a bank, hotels, and five churches through the shipping of lumber, fish, oysters, and vegetables.

During the years of the Great Depression in the 1930s, however, unemployment was high and federal assistance to small communities often came in the practical form of putting people to work building needed community improvements. The Works Progress Administration (WPA) had a significant impact on the Florida economy during the New Deal era by redirecting funds from direct relief to the support of the performance of useful labor. It provided a way to employ both skilled and unskilled workers, providing income for them and direct products of their labors. The WPA funded the labor costs of projects, which usually accounted for over half of the cost. Fortunately, several federal programs designed to alleviate some of the impact of the depressed economy resulted in several local projects which benefited Crystal River: some low-lying land was drained; a new brick school was built; and a new city hall, constructed out of local limestone under the supervision of Hub Hyatt, was built. During the 1930s, limestone was used for numerous Florida Works Progress Administration construction projects. Limestone is found naturally in Florida, and there are quarries in several counties. Now used primarily in a crushed form for road construction, in the 1930s limestone was quarried and hand carved with stone axes and chisels into building stones. It is a highly durable material. The building was used as the City Hall until 1972, when a new building was constructed on U. S. Highway 19. In 1988 the building was leased to the Citrus

**United States Department of the Interior
National Park Service**

**NATIONAL REGISTER OF HISTORIC PLACES
CONTINUATION SHEET**

Section number 8 Page 3

**CRYSTAL RIVER OLD CITY HALL
Crystal River, Citrus County, Florida**

County Historical Society for use as a museum and visitors center.

ARCHITECTURAL CONTEXT

The Mission Style was developed in California in the 1890s to emulate the Franciscan missions of the Spanish Colonial Period. This style incorporates stuccoed walls, tiled roofs, round arches, Spanish details, and open, spreading plans. Buildings are simple in form with little sculptural ornamentation. Curvilinear parapets, its most distinctive feature, are pronounced.

ARCHITECTURAL SIGNIFICANCE

Old City Hall is architecturally significant in the city of Crystal River. It is a fine example of Mission Style architecture attained through its masonry exterior and curvilinear parapets. The Mission style architecture of this building is typical, with an inexpensive, unpretentious design. In addition, it is an important visual component in the historic commercial area of Crystal River.

United States Department of the Interior
National Park Service

**NATIONAL REGISTER OF HISTORIC PLACES
CONTINUATION SHEET**

Section number 9 Page 1

**CRYSTAL RIVER OLD CITY HALL
Crystal River, Citrus County, Florida**

BIBLIOGRAPHY

Dunn, Hampton, BACK HOME - A History of Citrus County, Florida (Citrus County Historical Society, Inverness, Fl., 1976.)

Laurie, Murray O. Architectural and Historical Survey of the City of Crystal River, Florida (Gainesville, Fl. 1992)., Survey report on file, Crystal River City Hall.

Vertical Files, Crystal River Library

Citrus County (Fl.) *Chronicle*, Wednesday, July 1, 1987, pages 27 & 28.

Florida State Gazetteer and Business Directory, 1925.

**United States Department of the Interior
National Park Service**

**NATIONAL REGISTER OF HISTORIC PLACES
CONTINUATION SHEET**

Section number 10 Page 1

**CRYSTAL RIVER OLD CITY HALL
Crystal River, Citrus County, Florida**

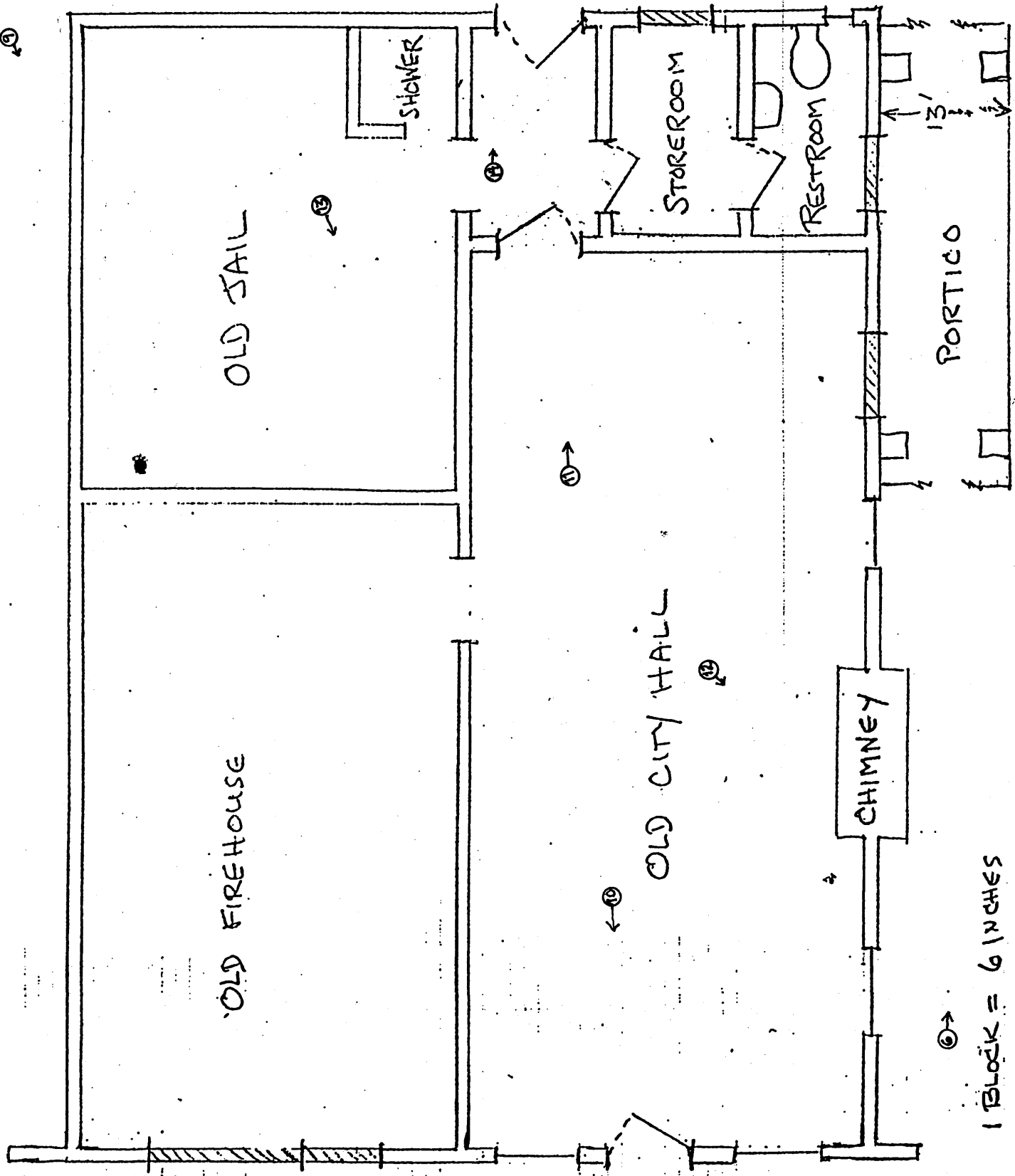
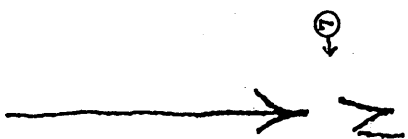
VERBAL BOUNDARY DESCRIPTION

Sylvan Glen Addition: Lot 72 Township 18 South, Range 17 East Section 21 - ¼ NW Crystal River.

VERBAL BOUNDARY JUSTIFICATION

The property includes the entire parcel historically associated with the Crystal River Old City Hall.

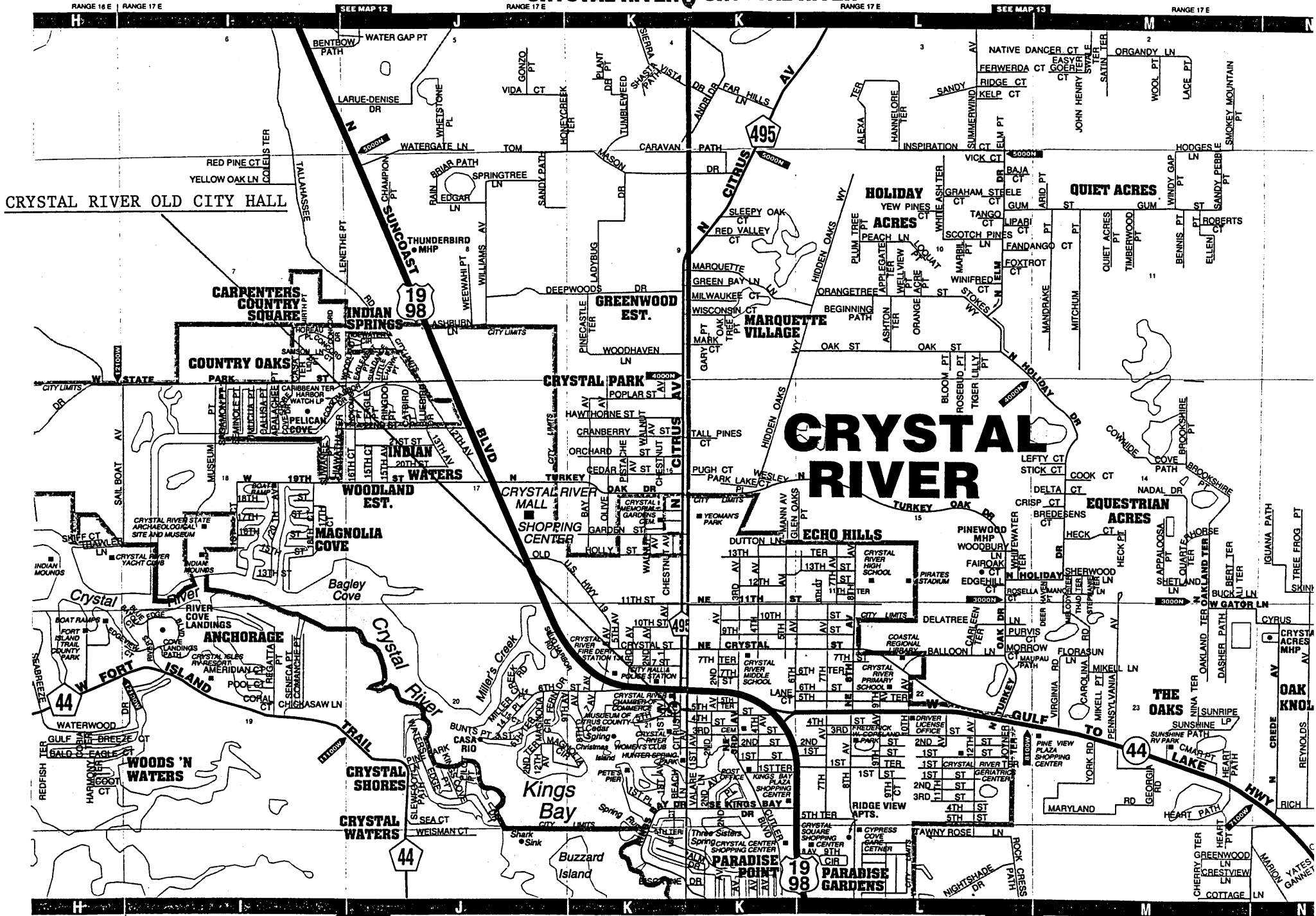
CRYSTAL RIVER OLD CITY HALL
Crystal River, Citrus County, Florida



1 BLOCK = 6 INCHES

○ = PHOTO

CRYSTAL RIVER CRYSTAL RIVER



CRYSTAL RIVER OLD CITY HALL

CRYSTAL RIVER