



①

Jeremiah J. Yereance House
410 Riverside Ave.
Lyndhurst, N.J., Bergen County

FRONT OF HOUSE 10/30/85
CAMERA FACING EAST



410

Scientist's Garden
Dana
1841

2

Jeremiah J. Yereance House
410 Riverside Ave.
Lyndhurst, N.J. Bergen County

FRONT OF HOUSE, CLOSE UP
CAMERA FACING EAST 10/30/85



3

Jeremiah J. Yereance House
410 Riverside Ave.
Lyndhurst, NJ Bergen County

WISTERIA VINE / NORTH
CAMERA FACING / EAST

10/30/85



4

Jeremiah J. Yereance House
410 Riverside Ave.
Lyndhurst, N.J., Bergen County

VIEW OF HOUSE (BACKGROUND)
SHOWING PROXIMITY TO RIVER
ROAD SCHOOL, ALSO LANDMARK

CAMERA FACING S. EAST (10/30)
SCHOOLHOUSE ON STATE & NAT'L
REGISTER OF HISTORIC PLACES.



5

Jeremiah J. Yereance House
410 Riverside Ave.
Lyndhurst, N.J.. Bergen County

VIEW OF HOUSE FROM SCHOOL
YARD, CAMERA FACING EAST.

10/30/85



6

Jeremiah J. Yereance House
410 Riverside Ave.
Lyndhurst, N.J.. Bergen County

COBBLESTONE WALK INSTALLED
IN FRONT OF HOUSE.

10/30/85



⑦

Jeremiah J. Yereance House
410 Riverside Ave.
Lyndhurst, N..J., Bergen County

VIEW OF NORTH SIDE OF HOUSE
CAMERA FACING SOUTH EAST.
(NORTH WING) 10/30/85



8

Jeremiah J. Yereance House
410 Riverside Ave.
Lyndhurst, N.J., Bergen County

VIEW OF SOUTH SIDE OF HOUSE
CAMERA FACING NORTH EAST.
(SOUTH WING) 10/30/85



9

Jeremiah J. Yereance House
410 Riverside Ave.
Lyndhurst, NJ. Bergen County

VIEW OF REAR OF SOUTH WING
AND 1930 BATHROOM ADDITION.
CAMERA FACING WEST. 10/30/85



10

Jeremiah J. Yereance House
410 Riverside Ave.
Lyndhurst, N.J. Bergen County

VIEW OF REAR AND NORTH SIDE
OF HOUSE SHOWING 1930 KITCHEN
ADDITION. 10/30/85

CAMERA FACING SOUTH WEST.

10/30/85



Jeremiah J. Yeeance House
410 Riverside Ave.
Lyndhurst, N.J. Bergen County

Rear of house.

Camera facing West.

10/30/85

A black and white photograph of a historical marker for River Road School. The marker is a dark, rectangular sign with a decorative top edge, mounted on a light-colored post. It stands in a grassy area in front of a two-story, light-colored wooden building with a gabled roof and a chimney. Bare trees are visible in the background. The marker's text describes the building's history from 1803 to 1976.

RIVER ROAD SCHOOL

The first schoolhouse was built on this site in 1803. Located in what then was called New Barbadoes Neck, the land was donated by Jacob Van Winkle "for the sole purpose of erecting a School House". In 1849 it was replaced by a two-story building. The present one-room school with Queen Anne style cupola was built in 1893. It continued to be used as a Lyndhurst school until 1976.

12

Jeremiah J. Yereance House
410 Riverside Aven.
Lyndhurst, N.J. Bergen County

PHOTO OF BERGEN COUNT HISTORIC
MARKER, LANDMARK STATUS OF
RIVER ROAD SCHOOLHOUSE. HOUSE
IN BACKGROUND.

10/30/85



Jeremiah J. Yereance House
410 Riverside Ave.
Lyndhurst, NJ Bergen County

INTERIOR OF HOUSE. 10/30/85
FRONT DOOR OF NORTH WING
PARLOR ROOM, FIRST FLOOR.



14

Jeremiah J. Yereance House
410 Riverside Ave.
Lyndhurst NJ BERGEN COUNTY

10/30/85

INTERIOR OF HOUSE.
ENTRANCE TO NORTH WING. FRONT
PARLOR.

CAMERA FACING SOUTH WEST



15

Jeremiah J. Yereance House
410 Riverside Ave.
Lyndhurst, N.J., Bergen County

INTERIOR OF HOUSE. 10/30/85
NORTH WING, FRONT PARLOR

MANTEL AND FIRE PLACE.

CAMERA FACING NORTH.



16

Jeremiah J. Yereance House
410 Riverside Ave.
Lyndhurst, N.J.. Bergen County

INTERIOR OF HOUSE 10/30/85
NORTH WING, FRONT PARLOR
FIRST FLOOR. SHOWING FIRE-

PLACE AND ENTRANCE TO KITCHEN
(MANTEL) CAMERA FACING NORTH
EAST. 10/30/85



17

Jeremiah J. Yereance House
410 Riverside Ave.
Lyndhurst, N.J., Bergen County

INTERIOR OF HOUSE.
NORTH WING, FRONT PARLOR
FIRST FLOOR. 10/30/85

SHOWING STAIR CASE, SMALL
CLOSET UNDER STAIR AND
ENTRANCE TO SOUTH WING.

CAMERA FACING SOUTH EAST



18

Jeremiah J. Yereance House
410 Riverside Ave.
Lyndhurst, N.J. Bergen County

INTERIOR PHOTO
OF LIBRARY, ORIGINAL WINDOW
CAMERA FACING EAST.

10/30/85

77



19

Jeremiah J. Yereance House
410 Riverside Ave.
Lyndhurst, N.J., Bergen County

INTERIOR, FRONT ENTRANCE TO
CENTER HALLWAY. CAMERA FACING
WEST. 10/30/85



21

Jeremiah J. Yereance House
410 Riverside Ave.
Lyndhurst, N.J. Bergen County

INTERIOR OF SOUTH WING PARLOR
ROOM DOOR, ORIGINAL HARDWARE.
CAMERA FACING NORTH. 10/30/85



21

Jeremiah J. Yereance House

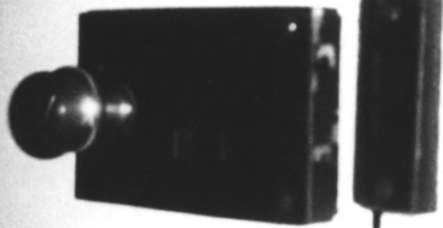
410 Riverside Ave.

Lyndhurst, N.J. 07071, Bergen Co.

INTERIOR, OF SOUTH WING

PARLOR MANTEL AND FIRE PLACE.

CAMERA FACING SOUTHWEST. 10/30/85

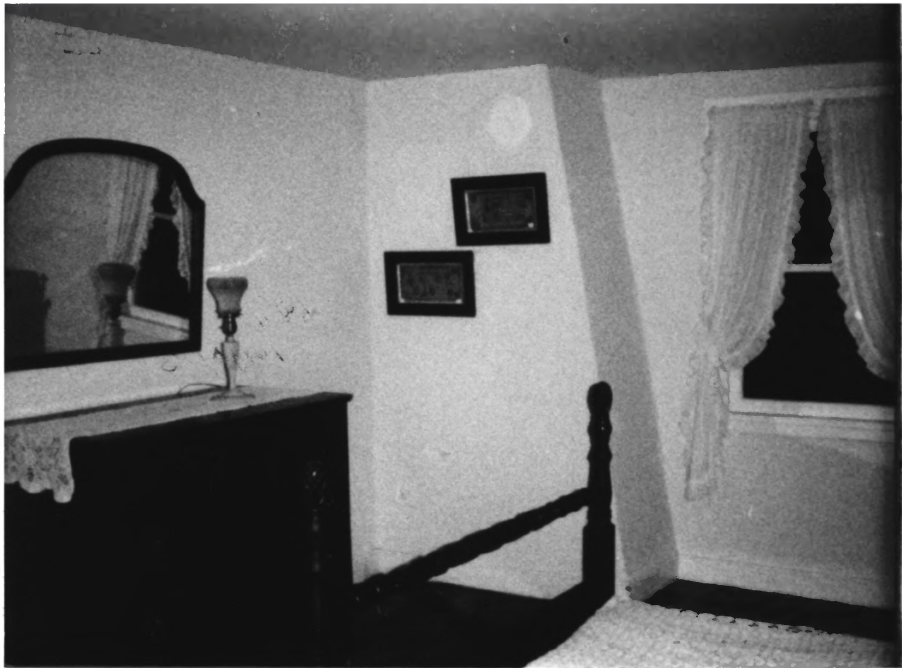


22

Jeremiah J. Yereance House
410 Riverside Ave.
Lyndhurst, N.J. Bergen County

INTERIOR OF LIBRARY SHOWING
HARDWARE, ORIGINAL ON DOOR
TO PARLOR. CAMERA FACING WEST

10/30/85



23

Jeremiah J. Yereance House
410 Riverside Ave.
Lyndhurst, N.J. Bergen County

INTERIOR, SECOND FLOOR BEDRM
CAMERA FACING SOUTHEAST

10/30/85



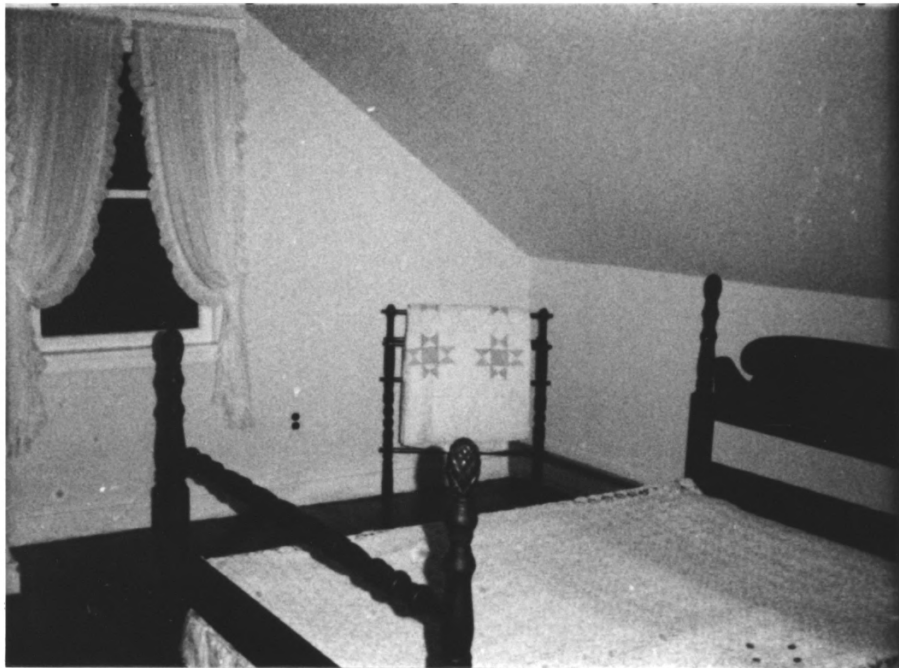
24

Jeremiah J. Yereance House
410 Riverside Ave.
Lyndhurst, N.J., Bergen County

INTERIOR OF SECOND FLOOR BEDRM
SHOWING DOORWAY AND EXISTING

CLOSET. CAMERA FACING NORTH.

10/30/85



25

Jeremiah J. Yereance House
410 Riverside Ave.
Lyndhurst, N.J. Bergen County

INTERIOR, SECOND FLR.
BEDROOM, CAMERA FACG.
SOUTHWEST.

10/30/85



26

Jeremiah J. Yereance House
410 Riverside Ave.
Lyndhurst, N.J., Bergen County -

INTERIOR, SECOND FLOOR
BEDROOM, CAMERA FAC-
ING SOUTH (SECOND
BEDROOM)

10/30/85



Jeremiah J. Yereance House
410 Riverside Ave.
Lyndhurst, N.J., Bergen County -

INTERIOR OF ATTIC
BEDROOM OF SECOND
FLOOR OF NORTH WING
CAMERA FACING SOUTH



28

Jeremiah J. Yereance House
410 Riverside Ave.
Lyndhurst, N.J., Bergen County -

10/30/85
INTERIOR OF ATTIC
BEDROOM CAMERA FACING
NORTH



29

Jeremiah J. Yereance House
410 Riverside Ave.
Lyndhurst, N.J. 07071, Bergen Co.

INTERIOR OF KITCHEN
1930 ADDITION.

CAMERA FACING EAST
REAR ENTRANCE, ORIGIN.
DOOR.

10/30/85



30

Jeremiah J. Yereance House
410 Riverside Ave.
Lyndhurst, N.J. 07071, Bergen Co.

INTERIOR OF KITCHEN
1930 ADDITION.

CAMERA FACING NORTH

10/30/85