



1.

YMCA

arrange a ~~at~~



2.

YMCA

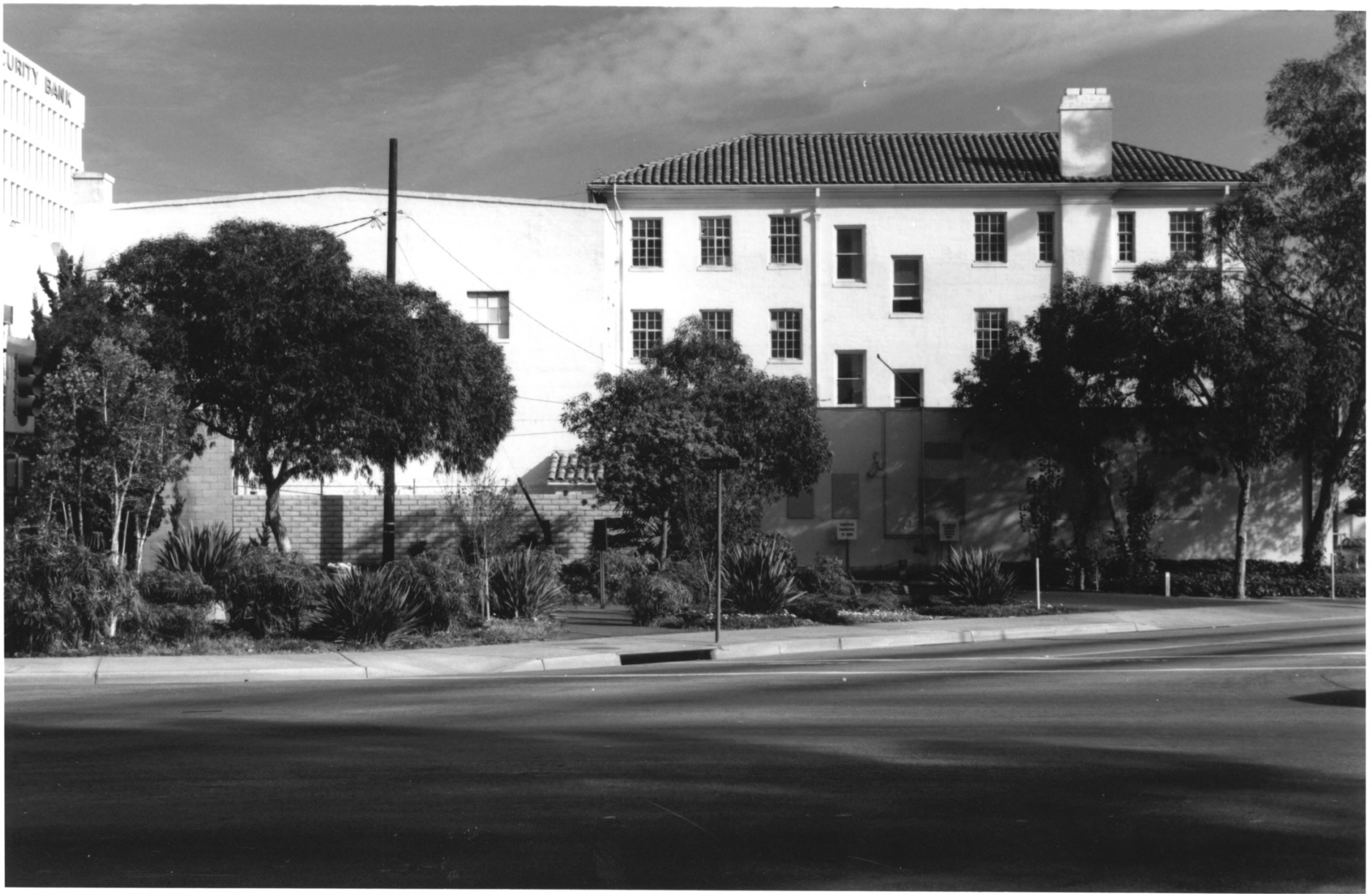
Pravara



3.

YMCA

Handwritten signature or scribble



SECURITY BANK

4. YMCA

अनुसंधान



1) YOUNG MEN'S CHRISTIAN ASSOCIATION
205 WEST CIVIL CENTER DRIVE

2) SANTA ANA, CALIFORNIA

3) ANN DITTMER

4) JULY, 1992.

5) 9746 RONMAR PL., WOODLAND HILLS, CA.

6) SOUTH FACADE OF BUILDING - MAIN ENTRY



1) YOUNG MEN'S CHRISTIAN ASSOCIATION

205 WEST CIVIC CENTER DRIVE

2) SANTA ANA, CALIFORNIA

3) UNKNOWN

4) 1929-1930

5) SEE BELOW

6) CORNER OF CHURCH & SYCAMORE STREETS
(S.E. CORNER OF BLDG.)



1) YOUNG MENS CHRISTIAN ASSOCIATION (SANTA ANA)
205 WEST CIVIC CENTER DRIVE

2) SANTA ANA, CALIFORNIA

3) UNKNOWN

4) CIRCA 1924

5) SEE BELOW

6) SOUTH/EAST CORNER OF BUILDING / CHURCH AND SYCAMORE STREETS



- 1) YOUNG MEN'S CHRISTIAN ASSOCIATION
205 WEST CIVIC CENTER DRIVE
- 2) SANTA ANA, CALIFORNIA
- 3) ANN DITTMER
- 4) JULY, 1992
- 5) 4726 RONMAR PLACE, WOODLAND HILLS, CA
- 6) INTERIOR VOID/COURTYARD
DIRECTION OF CAMERA - FACING WEST WING



1) YOUNG MEN'S CHRISTIAN ASSOCIATION
205 WEST CIVIC CENTER DRIVE

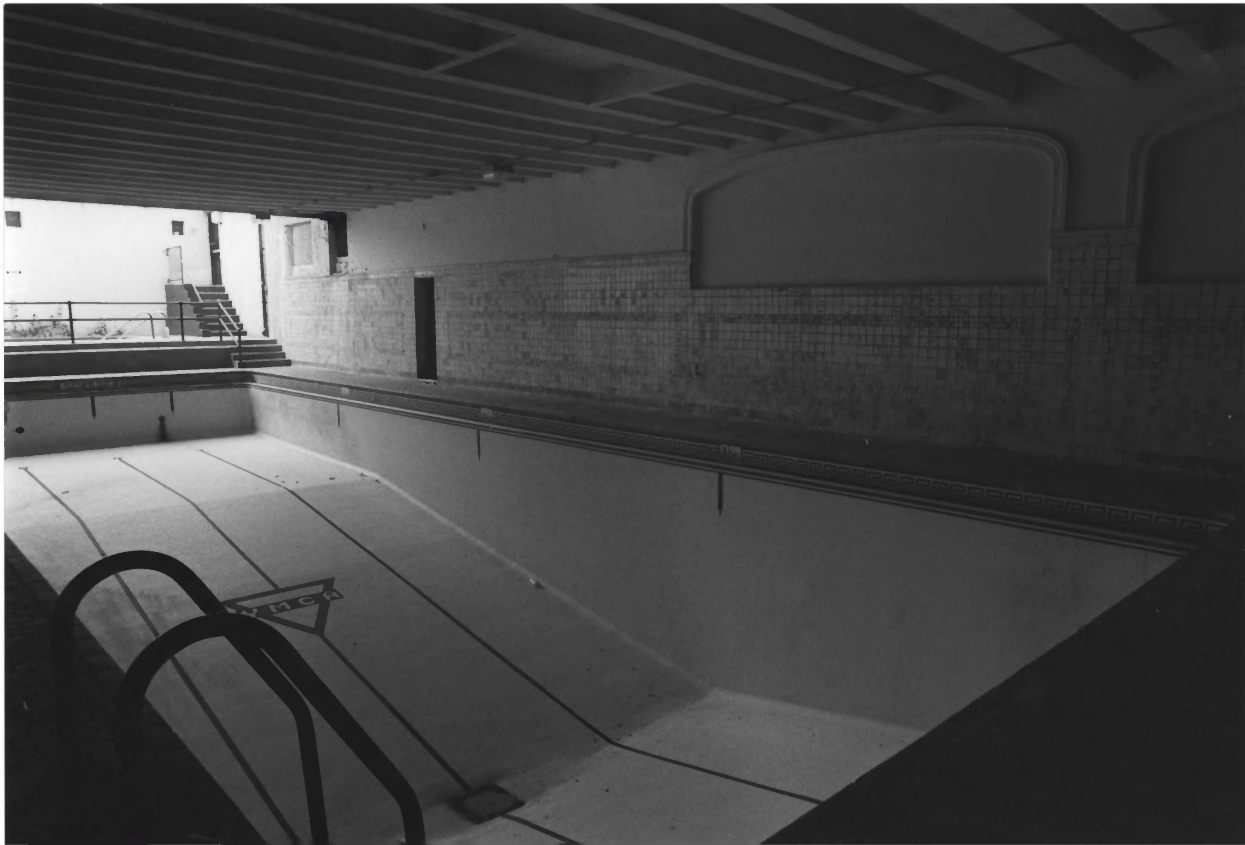
2) SANTA ANA, CALIFORNIA

3) ANN DITTMER

4) JULY, 1992

5) 4746 RONMAR PLACE, WOODLAND HILLS, CA

6) BATCHELDER TILE (DAMAGED) "PLUNGE" WALL.



- 1) YOUNG MEN'S CHRISTIAN ASSOCIATION
205 WEST CIVIC CENTER DRIVE
- 2) SANTA ANA, CALIFORNIA
- 3) ANN PITTMER
- 4) JULY, 1992
- 5) 4746 KONMAR PLACE, WOODLAND HILLS, CA
- 6) THE "PLUNGE", BASEMENT.
DIRECTION OF CAMERA - FACING WEST WALL



1) YOUNG MEN'S CHRISTIAN ASSOCIATION
205 WEST CIVIL CENTER DRIVE

2) SANTA ANA, CALIFORNIA

3) ANN DITTMER

4) JULY 1992

5) 4746 RONMAR PLACE, WOODLAND HILLS, CA

6) PHYSICAL FITNESS ROOM, BASEMENT, S-E CORNER.
(CAMERA FACING TO N-E CORNER OF ROOM)



1) YOUNG MEN'S CHRISTIAN ASSOCIATION
205 W. CIVIL CENTER DRIVE

2) SANTA ANA, CALIFORNIA

3) ANN DITTMER

4) JULY, 1992.

5) 4746 RONMAR PLACE, WOODLAND HILLS, CA

6) DORMITORY BEDROOM, SOUTH-WEST CORNER, THIRD FLOOR



1) YOUNG MEN'S CHRISTIAN ASSOCIATION
205 WEST CIVIC CENTER DRIVE

2) SANTA ANA, CALIFORNIA

3) ANN DITTMER

4) JULY, 1992

5) 4746 RONMAR PLACE, WOODLAND HILLS, CA

6) GREAT SOCIAL LOBBY, EAST, FIRST FLOOR.

(CAMERA FACING NORTH)



- 1) YOUNG MENS CHRISTIAN ASSOCIATION
205 WEST CIVIL CENTER DRIVE
- 2) SANTA ANA, CALIFORNIA
- 3) UNKNOWN
- 4) CIRCA 1924
- 5) SEE BELOW
- 6) INTERIOR LOBBY | EAST | FIRST FLOOR LEVEL



- 1) YOUNG MEN'S CHRISTIAN ASSOCIATION
205 WEST CIVIL CENTER DRIVE
- 2) SANTA ANA, CA
- 3) UNKNOWN
- 4) CIRCA 1929
- 5) FIRST AMERICAN TITLE CO, SANTA ANA 92701
- 6) INTERIOR LOBBY - EAST / FIRST FLOOR.



1) YOUNG MEN'S CHRISTIAN ASSOCIATION

205 WEST CIVIC CENTER DRIVE

2) SANTA ANA, CALIFORNIA

3) ANN DITTMER

4) JULY, 1992

5) 4746 RONMAR PLACE, WOODLAND HILLS, CA

6) THE GYMNASIUM, FIRST FLOOR, NORTH-EAST CORNER