



RANGER STATION

CAMP CLOVER RANGER STATION

WILLIAMS, ARIZONA

TERI A. CLELAND

NOVEMBER 1988

KNAIBS NATIONAL FOREST, WILLIAMS, ARIZONA

FACING WEST, PRIMARY SUCCESSION OF OFFICE
#1



CAMP CLARE Ranger Station

WILLIAMS, ARIZONA

TERI A. CULLEN

NOVEMBER 1988

KAIBAPO NATIONAL FOREST, WILLIAMS, ARIZONA

FACING NORTHWEST PRIMARILY AND SOUTH SITUATION OF OFFICE

#2



CAMP CLARE PANGOR STATION

WILLIAMS, ARIZONA

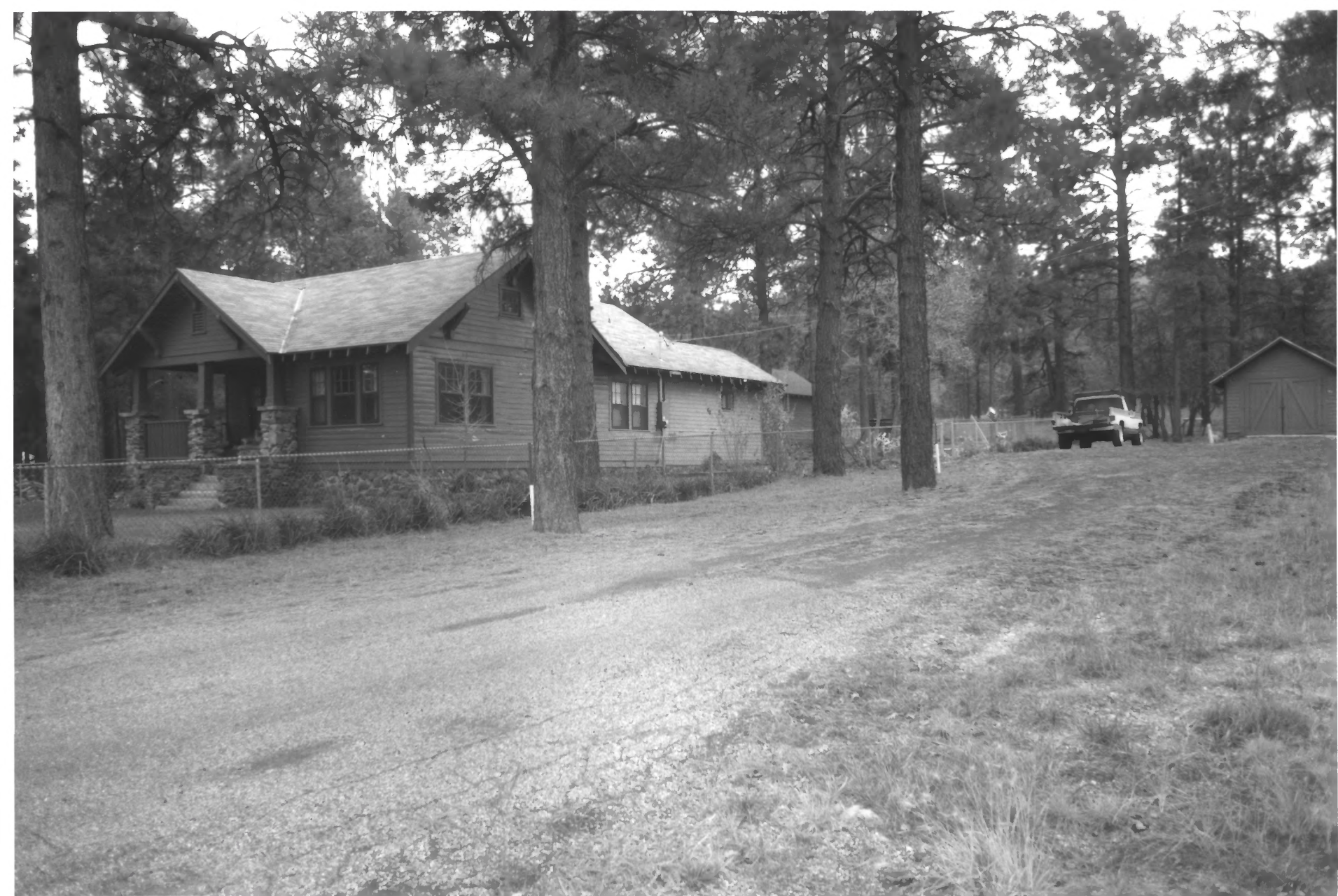
TERI A. CLECHANO

NOVEMBER 1988

KAIKAS NATIONAL FOREST, WILLIAMS, ARIZONA

FACING SOUTHWEST, PRIMARY ELEVATION OF DWELLING AND REAR SHED

3



CAMP CLOVER RANGER STATION

WILLIAMS, ARIZONA

TERI A. CLEELAND

NOVEMBER 1988

KAIBAB NATIONAL FOREST, WILLIAMS, ARIZONA

FACING SOUTHEAST; PRIMARY ELEVATION OF DWELLING AND GARAGE

#4



CAMP CLOVER RANGER STATION

WILLIAMS, ARIZONA

TERI A. CUELAND

NOVEMBER 1988

KAI BAB NATIONAL FOREST, WILLIAMS, ARIZONA

FACING NORTHWEST, PRIMARY ELEVATION OF BARN

#5



CAMP CLOVER RANGER STATION

WILLIAMS, ARIZONA

UNKNOWN

1945

KAIBAB NATIONAL FOREST, WILLIAMS, ARIZONA

FACING NORTHWEST, PRIMARY ELEVATION AND SOUTH ELEVATION OF OFFICE

116



CAMP CLOVER RANGER STATION

WILLIAMS, ARIZONA

UNKNOWN

UNKNOWN (PROBABLY CA. MID TO LATE 1930S)

KAIBAB NATIONAL FOREST, WILLIAMS, ARIZONA

FACING SOUTHEAST, PRIMARY ELEVATION OF DWELLING

#7