

United States Department of the Interior
National Park Service

APR 24 1989

National Register of Historic Places
Registration Form

NATIONAL
REGISTER

This form is for use in nominating or requesting determinations of eligibility for individual properties or districts. See instructions in *Guidelines for Completing National Register Forms* (National Register Bulletin 16). Complete each item by marking "x" in the appropriate box or by entering the requested information. If an item does not apply to the property being documented, enter "N/A" for "not applicable." For functions, styles, materials, and areas of significance, enter only the categories and subcategories listed in the instructions. For additional space use continuation sheets (Form 10-900a). Type all entries.

1. Name of Property

historic name Cluett Peabody & Company
other names/site number MHC #H-217

2. Location

street & number 123 First Street h/n not for publication
city, town Leominster h/n vicinity
state Massachusetts code MA county Worcester code 027 zip code 01453

3. Classification

Ownership of Property	Category of Property	Number of Resources within Property	
		Contributing	Noncontributing
<input checked="" type="checkbox"/> private	<input checked="" type="checkbox"/> building(s)	3	1 buildings
<input type="checkbox"/> public-local	<input type="checkbox"/> district	-	- sites
<input type="checkbox"/> public-State	<input type="checkbox"/> site	1	1 structures
<input type="checkbox"/> public-Federal	<input type="checkbox"/> structure	-	- objects
	<input type="checkbox"/> object	4	2 Total

Name of related multiple property listing:
- -

Number of contributing resources previously listed in the National Register 0

4. State/Federal Agency Certification

As the designated authority under the National Historic Preservation Act of 1966, as amended, I hereby certify that this nomination request for determination of eligibility meets the documentation standards for registering properties in the National Register of Historic Places and meets the procedural and professional requirements set forth in 36 CFR Part 60. In my opinion, the property meets does not meet the National Register criteria. See continuation sheet.

Executive Director, Massachusetts Historical Commission

Signature of certifying official *William A. Taalman* Date *3/30/89*
State Historic Preservation Officer

State or Federal agency and bureau

In my opinion, the property meets does not meet the National Register criteria. See continuation sheet.

Signature of commenting or other official _____ Date _____

State or Federal agency and bureau _____

5. National Park Service Certification

I, hereby, certify that this property is:

entered in the National Register.
 See continuation sheet.

determined eligible for the National Register. See continuation sheet.

determined not eligible for the National Register.

removed from the National Register.

other, (explain:) _____

for Signature of the Keeper Date of Action *6-8-89*

6. Function or Use

Historic Functions (enter categories from instructions)

Industry/Processing/Extraction:

manufacturing facility

Current Functions (enter categories from instructions)

Vacant/not in use

7. Description

Architectural Classification

(enter categories from instructions)

Georgian Revival

other; Industrial Mill Design

Materials (enter categories from instructions)

foundation Granite

walls Walls

roof Tar & gravel

other

Describe present and historic physical appearance.

The Cluett Peabody and Company complex, Leominster, is an interconnecting mass of four one- to four-story brick factory buildings dating mainly from the first forty years of the twentieth century. The buildings stand on a large corner site amidst a residential neighborhood that was originally workers housing for employees of the mill.

The factory consists of the 3 1/2-story, 1902 mill fronting on First Street, with a one-story flat-roofed boiler plant and chimney of the same date jogging out from the center of its rear elevation. The four-story 1937 addition adjoins the 1902 mill along its north end and continues the long First Street elevation. A large one-story 1957 addition to the rear of the 1937 factory completes the complex's mass.

The factory's principal facades fully retain their original setting. The complex is set back about twenty feet from First Street, with grass, shrubbery (now overgrown), and a chain-link fence denoting its boundaries. The southern edge of the site along Spruce Street also has a small lawn and a chain link fence flanking the rear driveway. The rear of the site is entirely paved in asphalt. To the north along First Street is a large, paved parking lot. This was the site of the company's earliest mill building on the site (1895), demolished in the 1950s to provide additional parking when the former parking area was replaced with the 1957 addition.

The 1902 mill (1) exhibits characteristics of the Georgian Revival style applied to a typical turn-of-the century mill design. The east facade is 3 1/2 stories in height, with a flat roof and simple stepped brick cornice. The first story is raised up a half story to increase the window size of the ground floor. The fenestration consists of steel multi-light sash with center pivots. They are set within segmental-arched openings with granite sills. A two-course granite base adds to the design. The facade is seventeen bays long, with an entrance in the seventh bay. Wide brick stairs lead up to the entrance, a single-light wood door with rectangular transom, framed by wood pilasters and a small shed-roof hood. The south (end) elevation is four bays deep and repeats the same design treatments as the facade. On the west (rear) elevation, a small wood stair enclosure with pitched roof has been added in one bay.

United States Department of the Interior
National Park ServiceNational Register of Historic Places
Continuation SheetCluett Peabody & Company
Leominster, MassachusettsSection number 7 Page 1

A 1937 factory addition (2) comprises the second key element of the complex. Abutting the north end of the 1902 mill, this four-story, flat-roofed brick block is an unaltered example of the refined industrial style prevalent in the 1930s among New England mills.

The building's facade is seven bays wide with a narrow entrance bay at its southern end. The entrance is of no architectural significance; it has modern aluminum doors and a flat projecting canopy set on steel posts. Windows with 16-light metal sash are set in a slightly recessed bay. The balance of the fenestration pattern consists of large rectangular openings with multi-light steel sash. The openings are simply detailed with concrete sills and a recessed brick band above each fourth-story bay. The north elevation is four bays deep, repeating the same fenestration pattern as the facade.

The 1902 boiler plant (3) is a 1 1/2-story flat-roofed structure directly behind the 1902 factory. It extends west for three bays length, then jogs back from the south elevation for an additional bay. This bay has a later door-below-window arrangement, while the other windows are 16-light metal sash with center pivots. The roof has simple curved brackets at the cornice line. The first floor is raised up a half story to correspond to the mill's first story, with large 6-light windows below. The west elevation contains a large grade-level loading door in its north bay and a single 10-light window to its south. An original loading dock with a pair of wood doors is intact in the set-back south bay.

Directly north of the boiler plant is the rectangular brick chimney of 1902 (4). It rises above the four-story mass of the complex and has a simple corbelled cap. The chimney has been stuccoed and painted beige in later years.

In 1957, the company experienced its last phase of expansion, a large, flat-roofed one-story brick wing above a raised concrete basement (A) which extends west to Laurel Street from the rear of the 1937 factory. This wing is of noncontributing character, with a band of narrow, three-light windows on the south elevation and a solid brick end wall along Laurel Street.

A noncontributing element on the property is a small power transmitting structure (B) just south of the 1950s wing. Enclosed by metal fencing, the boxes and two-story steel frame detract from the historic setting of the factory complex.

The property has been largely vacant for the past several years but has experienced a minimum of vandalism or neglectful deterioration. It is proposed for conversion to residential apartments in the near future, in accordance with the Secretary of the Interior's Standards for Rehabilitation and Historic Tax Certification requirements.

**United States Department of the Interior
National Park Service**

**National Register of Historic Places
Continuation Sheet**

Cluett Peabody & Company
Leominster, Massachusetts

Section number 7 Page 2

The 1902 interiors are typical industrial factory spaces with brick walls, wood decking, and columns. There are no unusual interior finishes or detailing in either the 1902 or 1937 structures.

**United States Department of the Interior
National Park Service**

**National Register of Historic Places
Continuation Sheet**

Cluett Peabody & Company
Leominster, Massachusetts

Section number 7 Page 3

Archaeological Description

While no prehistoric sites are currently recorded on the property, it is possible that sites are present. One known prehistoric site is recorded in the general area (within one mile). This factor plus the locational characteristics of the property, a well drained terrace near an unusual stream leading to Rockwell Pond, indicates a reasonable potential for locating sites. In general, however, there is little potential for locating significant archaeological survivals from the prehistoric or pre late-nineteenth century historic period because of intense industrial development on the property. Late nineteenth century survivals may exist of the Gane Mill, now demolished but once located on the property. Outbuildings and dump areas might also survive associated with the Gane Mill or the early 20th century complex of mills which still exist.

8. Statement of Significance

Certifying official has considered the significance of this property in relation to other properties:

nationally statewide locally

Applicable National Register Criteria A B C D

Criteria Considerations (Exceptions) A B C D E F G

Areas of Significance (enter categories from instructions)

Period of Significance

Significant Dates

Architecture

1901-1937

1902

Industry

1937

Cultural Affiliation

Significant Person

Architect/Builder

n/a

unknown

State significance of property, and justify criteria, criteria considerations, and areas and periods of significance noted above.

Cluett Peabody and Company, Leominster, retains its integrity of location, design, setting, materials, workmanship, feeling, and association meets Criteria A and C of the National Register. Under Criterion A, the 1902 factory complex and its 1937 addition are important for their contribution to Leominster's industrial development during the first half of this century, and in particular for their role in maintaining shirt manufacturing as one of the city's dominant industries during this period. Under Criterion C, the complex is a well-preserved example of two distinct phases of industrial construction in the early twentieth century. Despite the loss of the 1895 mill which originally housed a portion of the operations in the 1950s, the 1902 mill is representative of local factory design at the turn of the century and is a handsome example of its type. The 1937 addition is equally representative of its time and reflects a major expansion of Cluett Peabody at a time when little growth was occurring in most of the city's other industries.

Cluett Peabody and Company was a relative latecomer to the Leominster shirt industry, starting its operations there a full nineteen years after the city's first shirtmaker, G. F. Morse & Company, was founded in 1880. The industry grew rapidly in the next two decades. G. F. Morse & Company became the Leominster Shirt Co. in 1881, the same year it was sold to E. A. Buffington of Detroit. It and an affiliate, the Bay State Shirt Co., which moved to Leominster in 1885, continued their operations until 1898.

Meanwhile, George A. Gane and Francis A. Whitney, two former owners of the Leominster Shirt Company, formed a new company in 1882, the Wachusett Shirt Company. F. A. Whitney had already earned a reputation as founder of Leominster's Whitney Reed Chair Co. and the highly successful F. A. Whitney Carriage Company. The Wachusett Shirt Co. gained widespread business under F. A. Whitney's able management. It moved to its Water Street factory in 1887 and remained in the Water Street complex (NR 1982) until the 1930s. It later housed its drastically reduced operations solely in a Summer Street plant, until closing completely in 1951. During its early years, the company was in large part responsible for the huge number of skilled shirtmakers in the city.

See continuation sheet

9. Major Bibliographical References

Emerson, W. A., Leominster Historical & Picturesque, Gardner: Lithotype Publishing Company, 1888.
Leominster Daily Enterprise, assorted undated clippings, Leominster Public Library Historical Collection, "Cluett Peabody" file.
Leominster Daily Enterprise, July 31, 1937, March 5, 1947, Leominster Public Library Historical Collection.
Moody's Industrial Manual, 1921, 1940, 1950, 1974, 1984, vol. 1.
New York Times, November 26, 1912, p. 18, col. 4.
Wachusett Shirt Company, National Register nomination form, March, 1982, pp. 8/1,2.

See continuation sheet

Previous documentation on file (NPS):

- preliminary determination of individual listing (36 CFR 67) has been requested
- previously listed in the National Register
- previously determined eligible by the National Register
- designated a National Historic Landmark
- recorded by Historic American Buildings Survey # _____
- recorded by Historic American Engineering Record # _____

Primary location of additional data:

- State historic preservation office
- Other State agency
- Federal agency
- Local government
- University
- Other

Specify repository: _____

10. Geographical Data

Acreeage of property 3.1 acres

UTM References

A

1	9
---	---

2	7	3	8	8	0
---	---	---	---	---	---

4	7	1	1	6	6	5
---	---	---	---	---	---	---

 Zone Easting Northing

B

--	--	--	--	--	--	--

--	--	--	--	--	--	--

--	--	--	--	--	--	--

 Zone Easting Northing

C

--	--	--	--	--	--	--

--	--	--	--	--	--	--

--	--	--	--	--	--	--

D

--	--	--	--	--	--	--

--	--	--	--	--	--	--

--	--	--	--	--	--	--

See continuation sheet

Verbal Boundary Description

See continuation sheet

Boundary Justification

This boundary was selected because it encompasses the entire parcel historically as well as presently owned by and associated with the Cluett Peabody & Company factory complex. None of the adjacent residential properties are included since they were never specifically built or owned by the mill.

See continuation sheet

11. Form Prepared By

name/title Margo B. Webber, Pres. Consultant w/ Betsy Friedberg, Nat. Reg. Director, MHC
 organization Massachusetts Historical Commission date February, 1989
 street & number 80 Boylston St., Suite 310 telephone (617) 727-8470
 city or town Boston state MA zip code 02116

**United States Department of the Interior
National Park Service****National Register of Historic Places
Continuation Sheet**Cluett Peabody & Company
Leominster, MassachusettsSection number 8 Page 1

In 1899, precisely because of the Wachusett Shirt Co.'s success, Cluett Peabody chose Leominster as the site for a new plant, which started out with 150 employees. Also, the closing of the Leominster Shirt Co. and Bay State Shirt Co. a year earlier fortuitously presented Cluett Peabody with the opportunity to acquire an existing factory and its shirtmaking machinery, and to tap a skilled labor market.

Yet another shirt company, the George A. Gane Shirt Co., was built on First Street in 1895 by the former Wachusett Co. partner. Its life was short-lived, closing in 1901. Its four-story wooden mill was acquired by Cluett Peabody plant. This plant became the base for later consolidation at the First/Spruce Streets site with the 1913 acquisition of the adjacent E. B. Kingman Co. plant, built in 1902 for a local manufacturer of celluloid, rubber, and shell novelty items.

Cluett Peabody arrived in Leominster at the peak of the Wachusett Shirt Company's success. At the industry's zenith in 1902, the city had 3,000 shirtmakers employed within the two firms. By 1915, the labor force had been halved, but while the Wachusett Co. had cut its staff to around 600, Cluett Peabody had grown to 800 employees.

Cluett Peabody's success in the face of decline by the only other surviving local firm was largely due to the vast size of its home-base operations in Troy, New York. Cluett Peabody was already widely known as a Troy-based shirt and collar manufacturer. It was the successor firm to Maullin & Blanchard Co., formed in Troy in 1851 and considered the founder of the shirt and collar industry. Under the able direction of George B. Cluett from the 1860s until his death in 1912, Cluett Peabody had by that year become the largest shirt and collar maker in the world, with an annual output of 7,000,000 dozen collars and 500,000 dozen shirts. Its assets included \$10 million of preferred stock and \$18 million of common stock.¹ In addition to its main plant at Troy, the Leominster plant was one of several other factories also established at Rochester, Corinth, and Waterford, New York, and St. Johns, Quebec.

The Leominster plant had been started specifically to manufacture the company's Arrow shirts, one of its leading products. Around 1919, however, the whole shirt industry shifted from separate collars to shirts with collars attached. Again, Cluett Peabody's large size, national market, and astute management enabled it to adapt new production and marketing techniques that kept Arrow shirts at the head of the field. Other advances such as the 1929 patent on Sanforizing, a mechanical compressive shrinking process for cottons used in clothing manufacture, also kept Cluett Peabody at the forefront of the industry.

¹ New York Times, November 26, 1912, p.4.

United States Department of the Interior
National Park ServiceNational Register of Historic Places
Continuation SheetCluett Peabody & Company
Leominster, MassachusettsSection number 8 Page 2

In the 1930s, at a time when many other local industries such as baby carriages, piano cases, and horn combs were declining, Cluett Peabody continued to expand its plant with its 1937 addition, and still maintained 600 employees, most of whom were women. It was comparable in size to the city's E. I. Dupont plant, the only other substantial industry in these years.² It continued as an important local employer well into the 1950s, long after all other shirt companies had closed their doors.

The property's architectural significance derives from the handsome industrial designs of the two brick mills and related outbuilding. The original four-story wooden mill of the Gane Shirt Company, unfortunately, no longer survives. Yet, even without this component, the factory complex is a large, striking mass that anchors the hilltop of the primarily residential neighborhood surrounding the site.

The 1902 mill, boiler plant, and chimney were well-suited to Cluett Peabody's needs. The factory's straightforward industrial design and layout were readily adaptable to the shirtmaking industry. The simple lines, choice granite trim, and entrance detailing of the exterior reflect the success and substance of the original occupant.

It is one of several similarly designed small factories of this type in the city. Of the other similar brick factories, the recently rehabilitated Wellington Piano Factory (1895-1919) (NR 1984), is most comparable in scale and design character. The former W. S. Reed Toy Company mill (ca. 1897), has been considerably altered by unsympathetic window infill and ramp treatments. The only surviving brick mill of the Tilton and Good complex (1878) is nearly completely obliterated by later concrete-block structures adjacent and attached to it. The Leominster Worsted Company mill (1890s), once a lovely complex of one- and two-story brick elements, has likewise had its context, scale, and design character destroyed by later concrete-block additions. The somewhat earlier Crocker Perry and Co. Factory (1865), although smaller in size and featuring a frontal tower and pitched roof, continues to undergo unsympathetic renovations. In contrast, the 1902 Cluett Peabody buildings fully retain their historic integrity.

The 1937 addition built by Cluett Peabody is one of the city's very few large-scale industrial designs from the 1930s. It is an unaltered example of its type, illustrating the clean lines, minimal brickwork detailing, and proportionally large industrial sash of later industrial plants. The large size and prominent mass further add to its impressiveness, while the siting and fenestration pattern sit comfortably adjacent to the 1902 mill.

² Leominster Daily Enterprise, July 31, 1937, Leominster Public Library, Historical Collection.

**United States Department of the Interior
National Park Service****National Register of Historic Places
Continuation Sheet**Cluett Peabody & Company
Leominster, MassachusettsSection number 8 Page 3

Within the context of other industrial properties in Leominster, the nominated complex is by no means the largest, yet it is typical of the many mid-sized firms that together formed the bulk of the city's manufacturing output. The city's economic growth, historically, has been due to the large number of smaller industries rather than the more common New England pattern of a one-industry or even one-mill town. Compared to the only other shirt factory that remains, this complex is physically smaller than the Wachusett Co. but is substantially intact and retains its strong local association with Cluett Peabody and with Leominster's shirtmaking industry.

**United States Department of the Interior
National Park Service**

**National Register of Historic Places
Continuation Sheet**

Cluett Peabody & Company
Leominster, Massachusetts

Section number 8 Page 4

Archaeological Significance

Historic archaeological remains on the Cluett Peabody and Company property have the potential for providing detailed information on structures no longer extant on the property and features (dump areas) which might provide information on technologies/machinery used, products produced; and workers in the mills. Survey and excavation may help determine whether or not survivals of the 1895 Gane Mill survive as well as outbuildings associated with that mill or the early 1900s mill complex now standing. Industrial waste also likely survives associated with both mills. Waste products from the surviving mill may have been used to fill the Gane Mill. These survivals could provide valuable information on what and how material were produced in the mills. Refuse might also survive which could provide insights on workers in the mills and how they and/or their conditions changed through time.

**United States Department of the Interior
National Park Service**

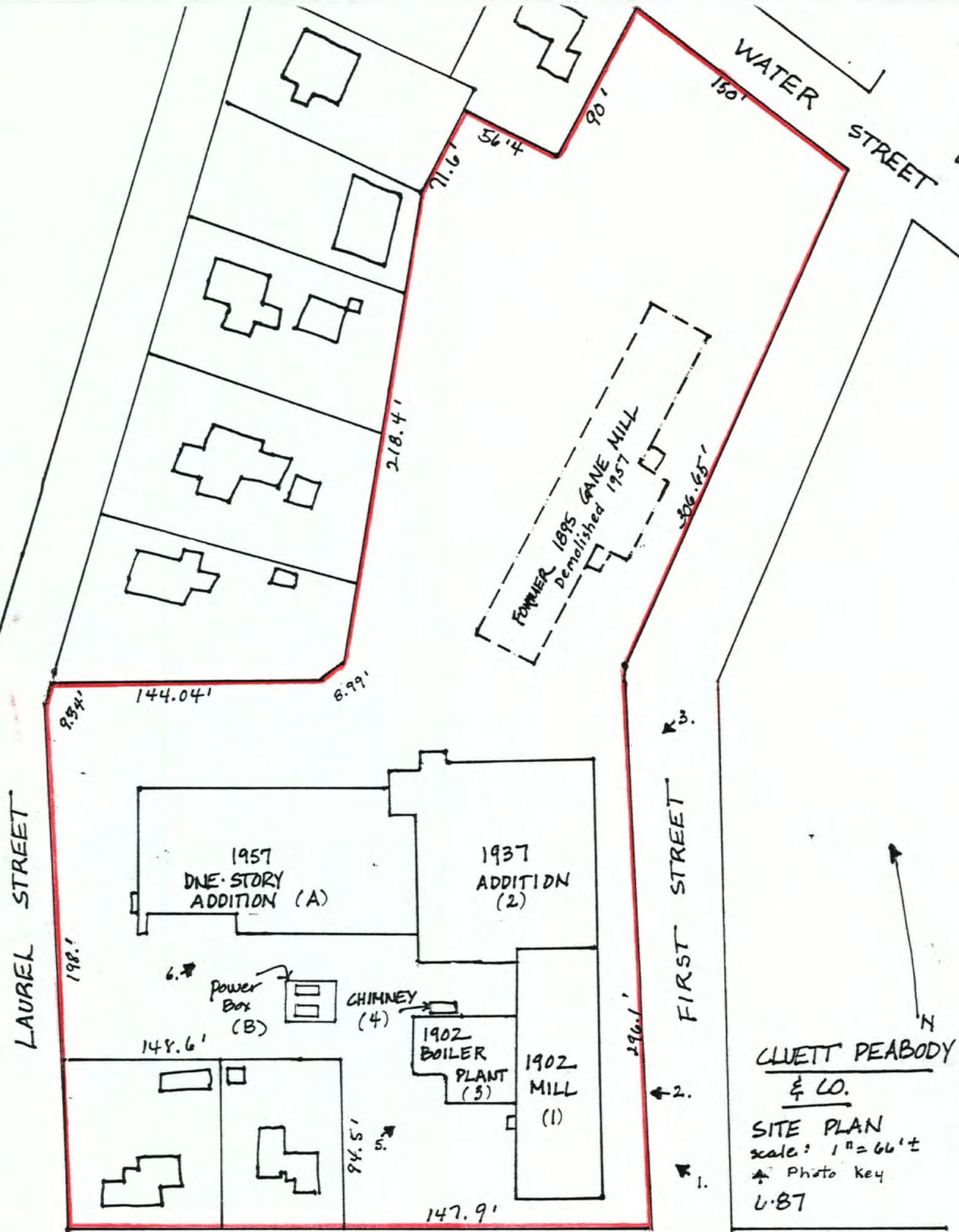
**National Register of Historic Places
Continuation Sheet**

Cluett Peabody & Company
Leominster, Massachusetts

Section number 10 Page 1

Verbal Boundary Description

Beginning at the southwest corner of the intersection of First and Spruce Streets, the boundary runs north along the west side of First Street for 296.1 feet, then jogs eastward with the street edge and extends another 306.65 feet to the corner of Water Street. It proceeds westward for 150 feet along the south side of Water Street, then turns south along the west boundary of the Cluett Peabody property for 90 feet and follows the property line of the parcel westward for 56.4 feet, then turns southwesterly for 71.6 feet and southerly for 218.4 feet. It then jogs southwesterly for 8.99 feet and turns westerly for a distance of 144.04 feet until reaching the east side of Laurel Street. It turns 9.34 feet southwesterly and then proceeds south along the east side of Laurel Street for 198 feet, turns east and runs 148.6 feet, jogs south along the west boundary of the Cluett Peabody parcel for 94.5 feet, and turns eastward along the north side of Spruce Street for a distance of 147.9 feet to the point of beginning.



CLUETT PEABODY & CO.
 ENGINEERS & ARCHITECTS

SITE PLAN
 scale: 1" = 66' ±
 Photo Key
 6-87

Source: Mortgage Plan, 12-86

Inspection

United States Department of the Interior
National Park Service

National Register of Historic Places
Continuation Sheet

Section number _____ Page _____

SUPPLEMENTARY LISTING RECORD

NRIS Reference Number: 89000439

Date Listed: 06/08/89

Cluett Peabody & Company
Property Name

Worcester
County

MA
State

N/A
Multiple Name

This property is listed in the National Register of Historic Places in accordance with the attached nomination documentation subject to the following exceptions, exclusions, or amendments, notwithstanding the National Park Service certification included in the nomination documentation.

[Signature]
Signature of the Keeper

6-8-89
Date of Action

=====
Amended Items in Nomination:

Period of Significance:

1901 was inadvertently entered as the beginning date for the period of significance, 1902 was intended as indicated by the text and the specific dates.

This information was confirmed with Ann Tait, Acting National Register Director, MASHPO, by telephone.

DISTRIBUTION:

- National Register property file
- Nominating Authority (without nomination attachment)

UNITED STATES DEPARTMENT OF THE INTERIOR
NATIONAL PARK SERVICE

NATIONAL REGISTER OF HISTORIC PLACES
EVALUATION/RETURN SHEET

REQUESTED ACTION: NOMINATION

PROPERTY NAME: Cluett Peabody & Company

MULTIPLE NAME:

STATE & COUNTY: MASSACHUSETTS, Worcester

DATE RECEIVED: 4/24/89 DATE OF PENDING LIST: 5/09/89
DATE OF 16TH DAY: 5/25/89 DATE OF 45TH DAY: 6/08/89
DATE OF WEEKLY LIST:

REFERENCE NUMBER: 89000439

NOMINATOR: STATE

REASONS FOR REVIEW:

APPEAL: N DATA PROBLEM: N LANDSCAPE: N LESS THAN 50 YEARS: N
OTHER: N PDIL: N PERIOD: N PROGRAM UNAPPROVED: N
REQUEST: N SAMPLE: N SLR DRAFT: Y NATIONAL: N

COMMENT WAIVER: N

ACCEPT RETURN REJECT 6/8/89 DATE

ABSTRACT/SUMMARY COMMENTS:

Architecturally significant representative of 2 distinctive phases of industrial design from the early 20th century, and important local industrial function historically.

RECOM./CRITERIA Accept A+C
REVIEWER Sawse
DISCIPLINE Architectural History
DATE 6/8/89

DOCUMENTATION see attached comments Y/N see attached SLR Y/N

CLASSIFICATION

count resource type

STATE/FEDERAL AGENCY CERTIFICATION

FUNCTION

historic current

DESCRIPTION

architectural classification
 materials
 descriptive text

SIGNIFICANCE

Period Areas of Significance--Check and justify below

Specific dates Builder/Architect
Statement of Significance (in one paragraph)

summary paragraph
 completeness
 clarity
 applicable criteria
 justification of areas checked
 relating significance to the resource
 context
 relationship of integrity to significance
 justification of exception
 other

BIBLIOGRAPHY

GEOGRAPHICAL DATA

acreage verbal boundary description
 UTMs boundary justification

ACCOMPANYING DOCUMENTATION/PRESENTATION

sketch maps USGS maps photographs presentation

OTHER COMMENTS

Questions concerning this nomination may be directed to

_____ Phone _____

Signed _____ Date _____

PROBLEM DESCRIPTION SHEET

State Name MA

County Name Worcester

Resource Name Peabody, Cluett, + Company

Data Collector's Surname Shrimpton

Today's Date 4/26/89

Federal Register List / /

Cert. Date / /

Reference No. 89-439

Describe Problem:

Brick wall material

Team Leader _____ Date / /

N R Staff _____ Date / /

Problem Team _____ Date / /



Cluett Peabody and Company
Leominster, MA

Photo by: Margo Webber

October, 1987

Neg at: 136 Ridge Ave, Newton, MA 02159

View looking nw towards First St. facade of 1902 mill (#1).

Photo 1 of 6



Cluett Peabody and Company

Leominster, MA

Photo by: Margo Webber

October, 1987

Neg. at: 136 Ridge Ave., Newton, MA 02459

View looking west towards entrance bay of 1902 mill (1).

Photo 2 of 6



Cluett Peabody and Company

Leominster, MA

Photo by: Margo B. Webber

October, 1987

Neg at: 136 Ridge Ave., Newton, MA 02459

View looking southwest towards facade of 1937 addition (2).

Photo 3 of 6



Cluett Peabody and Company

Leominster, MA

Photo by: Margo Webber

October, 1987

Neg. at: 136 Ridge Ave., Newton, MA 02159

View looking ne towards rear of complex, with boiler plant (3)
in foreground.

Photo 4 of 6



Cluett Peabody and Company

Leominster, MA

Photo by: Margo Webber

October, 1987

Neg. at: 136 Ridge Ave., Newton, MA 02159

View looking ne towards 1902 boiler plant (3).

Photo 5 of 6



Cluett Peabody and Company

Leominster, MA

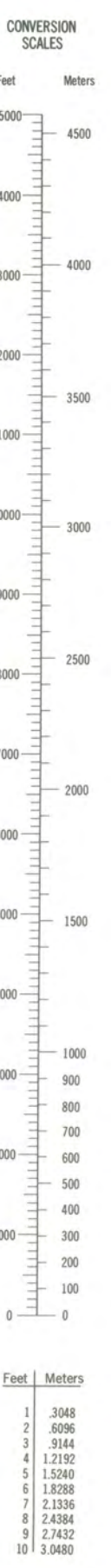
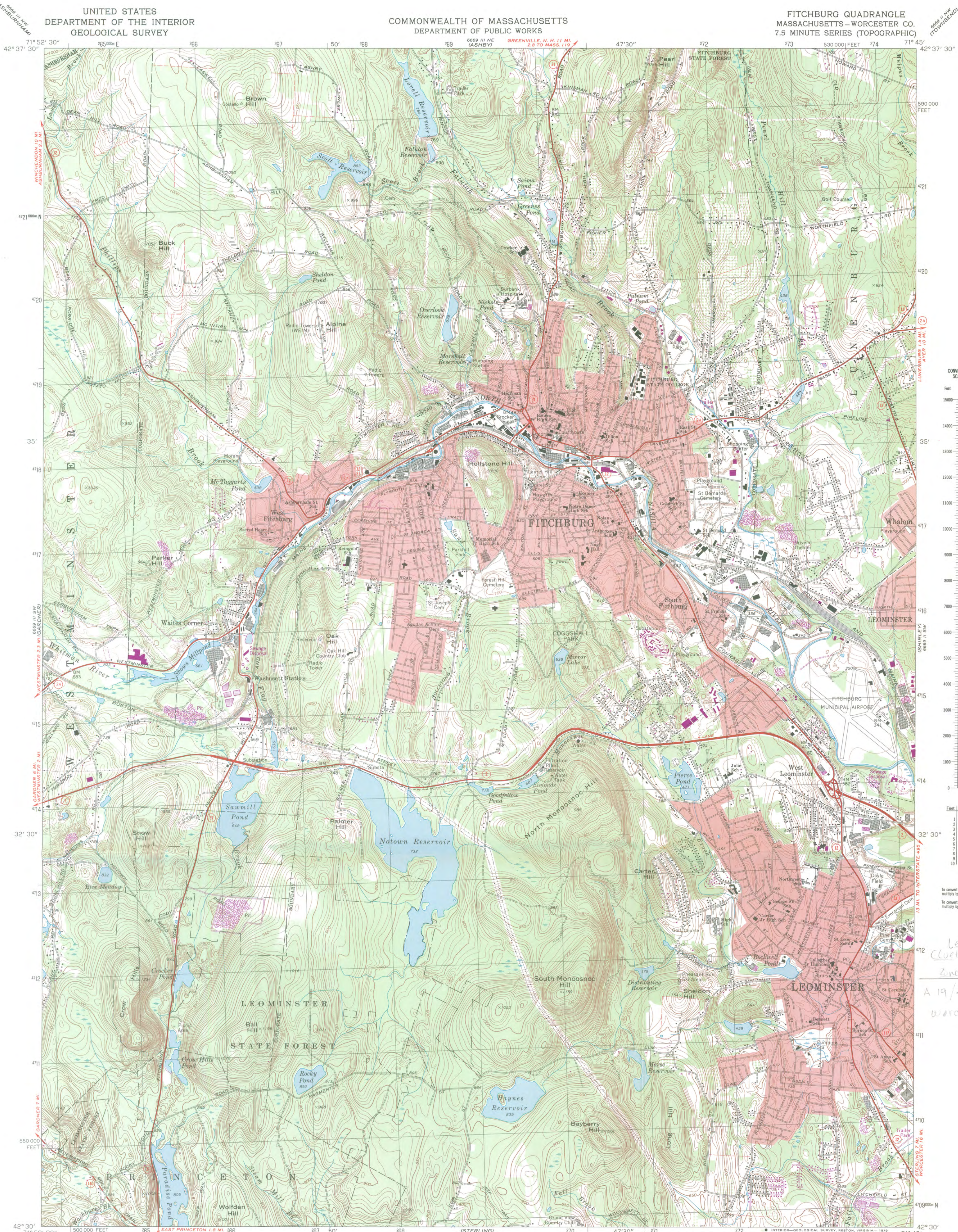
Photo by: Margo Webber

October, 1987

Neg. at: 136 Ridge Ave., Newton, MA 02159

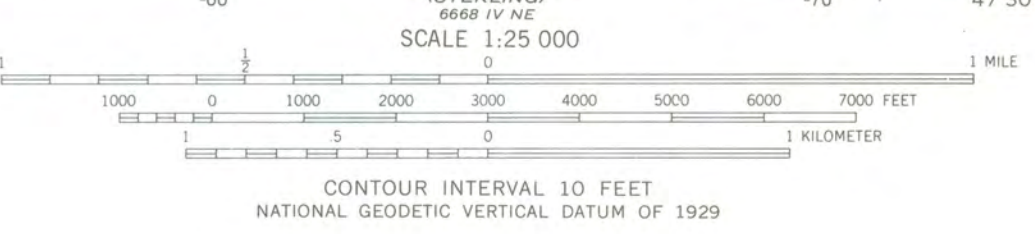
View looking ne towards non-contributing one-story 1957 addition (A)

Photo 6 of 6



*Leominster
Curtt ready to Com plan
zone facing north
A 19/273880/4711045
Worcester County, MA*

Mapped, edited, and published by the Geological Survey
Control by USGS, USC&GS, and Massachusetts Geodetic Survey
Planimetry by photogrammetric methods from aerial photographs
taken 1938. Topography by planimetric surveys 1943 and 1944
Revised from aerial photographs taken 1968. Field checked 1969
Polyconic projection. 1927 North American datum
10,000-foot grid based on Massachusetts coordinate system,
mainland zone
1000-meter Universal Transverse Mercator grid,
zone 19
Fine red dashed lines indicate selected fence and field lines where
generally visible on aerial photographs. This information is unchecked
Red tint indicates areas in which only landmark buildings are shown
There may be private inholdings within the boundaries of
the National or State reservations shown on this map



ROAD CLASSIFICATION

Primary highway, all weather, hard surface	Light-duty road, all weather, improved surface
Secondary highway, all weather, hard surface	Unimproved road, fair or dry weather

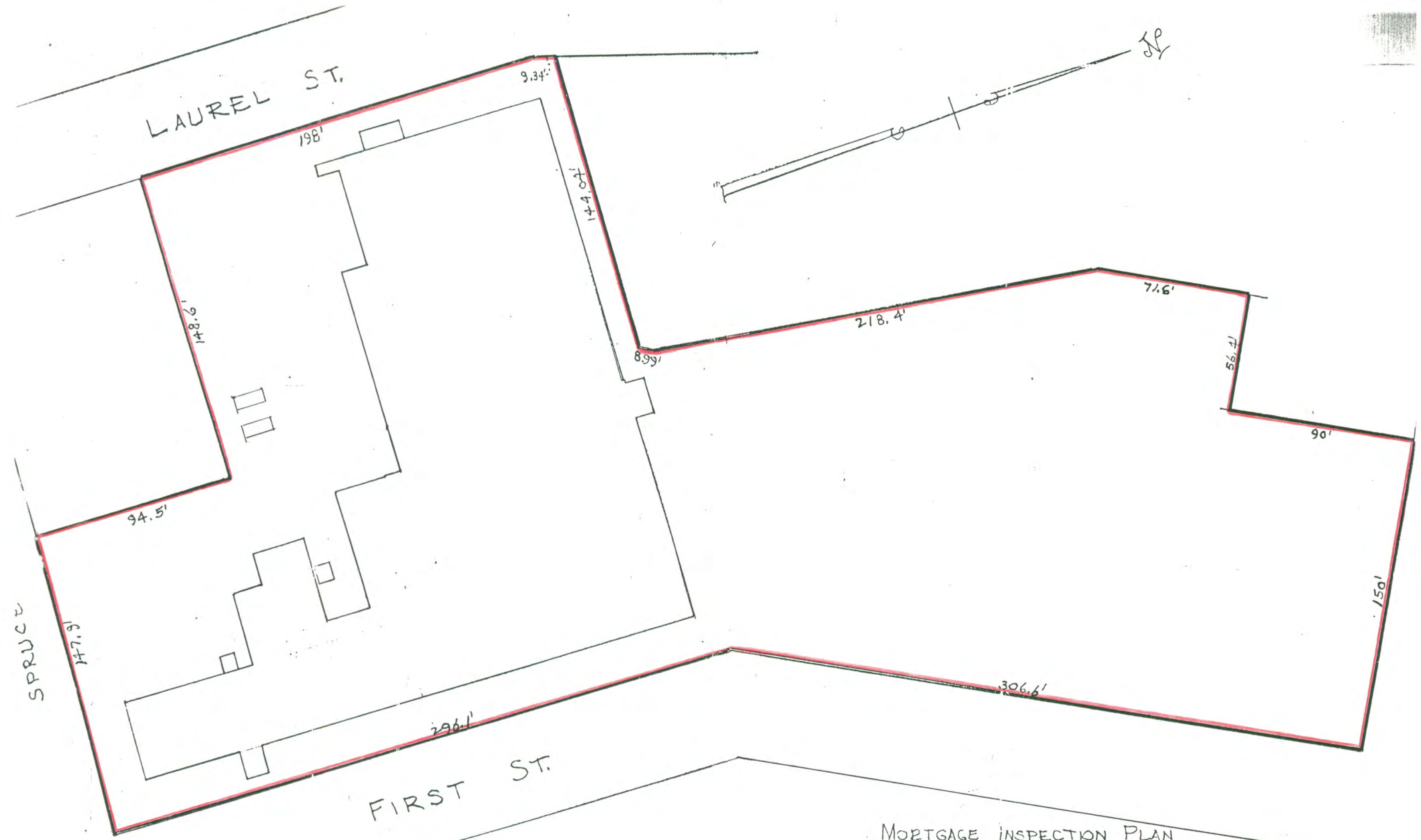
○ State Route



THIS MAP COMPLIES WITH NATIONAL MAP ACCURACY STANDARDS
FOR SALE BY U. S. GEOLOGICAL SURVEY, RESTON, VIRGINIA 22092
A FOLDER DESCRIBING TOPOGRAPHIC MAPS AND SYMBOLS IS AVAILABLE ON REQUEST

Revisions shown in purple compiled in cooperation with the State of
Massachusetts agencies from aerial photographs taken 1975 and other
source data. This information not field checked. Map edited 1979

FITCHBURG, MASS.
N4230—W7145/7.5
1969
PHOTOREVISED 1979
AMS 6669 III SE—SERIES V814



I certify that we examined the premises, that all visible encroachments and easements are shown hereon - there are no known

MORTGAGE INSPECTION PLAN
 FOR MORTGAGE PURPOSES ONLY
 LAND IN LEOMINSTER, MASS.
 TO BE MORTGAGED BY



April 18, 1989

Carol Shull
National Register of Historic Places
Department of the Interior
National Park Service
P.O. Box 37127
Washington, DC 20013-7127

APR 24 1989

NATIONAL
REGISTER

Dear Ms. Shull:

Enclosed you will find the following nomination form:

Leominster, Cluett Peabody & Company, 123 First Street
Leominster, Whitney & Company, 142 Water Street
Norfolk, Norfolk Grange Hall, 28 Rockwood Road
Webster, Rock Castle School, Prospect Street, HPCA #11019MA
Webster, Thompson School, Prospect Street, HPCA #11018MA

All have been voted eligible by the State Review Board and have been signed by the State Historic Preservation Officer. Owners were notified of pending State Review Board consideration 30-75 days before the meeting and were afforded the opportunity to comment. Comments received to date are attached to the nomination form.

Sincerely,

Betsy Friedberg

Betsy Friedberg
National Register Director
Massachusetts Historical Commission

Enclosure:

BF/

6/8/89



MASSACHUSETTS HISTORICAL COMMISSION
80 Boylston Street, Boston, MA 02116
(617) 727-8470

TO: Beth Savage, NRHP
National Park Service

FROM: Anne Tart

Beth, Our Fault! I found the
photos for Chett Feabody, Leominster:

IN RESPONSE TO YOUR RECENT INQUIRY
THE ENCLOSED INFORMATION
IS
SUPPLIED WITH THE
COMPLIMENTS OF THE
MASSACHUSETTS HISTORICAL COMMISSION

enclosed are
photos # 1, 5 and 6
for your files.

Happy Reviewing!
AT.

send certified