

















*Flippers Ditch  
Looking South from bridge*

U.S. ARMY FIELD ARTILLERY  
AND FORT SILL MUSEUM  
FORT SILL, OKLAHOMA 73503

One time non-exclusive use of photograph  
granted when used for publication. Credit  
U.S. Army Field Artillery & Fort Sill Museum,  
Fort Sill, OK



*Flippin's Ditch Looking North Towards  
Medicine Bluff Creek*

U.S. ARMY FIELD ARTILLERY  
AND FORT SILL MUSEUM  
FORT SILL, OKLAHOMA 73503

One time non-exclusive use of photograph  
granted when used for publication. Credit  
U.S. Army Field Artillery & Fort Sill Museum,  
Fort Sill, OK



Flippers Ditch

Looking North towards Medicine Bluff Creek

U.S. ARMY FIELD ARTILLERY  
AND FORT SILL MUSEUM  
FORT SILL, OKLAHOMA 73503

One time non-exclusive use of photograph  
granted when used for publication. Credit  
U.S. Army Field Artillery & Fort Sill Museum,  
Fort Sill, OK



Flippers Ditch  
Looking South





FLIPPERS DITCH  
LOOKING SOUTH

U.S. ARMY FIELD ARTILLERY  
AND FORT SILL MUSEUM  
FORT SILL, OKLAHOMA 73503

One time non-exclusive use of photograph  
granted when used for publication. Credit  
U.S. Army Field Artillery & Fort Sill Museum,  
Fort Sill, OK



B 423 FORT SILL NAT'L HISTORIC DISTRICT  
DANFORD HOUSE  
CURRENT AND TRADITIONAL HOME OF INSTALLATION  
CHIEF OF STAFF  
LOOKING N.E.  
FORT SILL, OKLA.

U.S. ARMY FIELD ARTILLERY  
AND FORT SILL MUSEUM  
FORT SILL, OKLAHOMA 73503

One time non-exclusive use of photograph  
granted when used for publication. Credit  
U.S. Army Field Artillery & Fort Sill Museum,  
Fort Sill, OK



*Thayer's Ditch  
Looking South*

U.S. ARMY FIELD ARTILLERY  
AND FORT SILL MUSEUM  
FORT SILL, OKLAHOMA 73503

One time non-exclusive use of photograph  
granted when used for publication. Credit  
U.S. Army Field Artillery & Fort Sill Museum,  
Fort Sill, OK



NATIONAL HISTORIC LANDMARK

PUBLICATION OF THIS  
AUTHORIZATION  
LEASE BY THE  
AT ALL TIMES  
AND  
MER  
PRO

U.S. ARMY  
PROPERTY  
APPROPRIATE  
PAPER

PHOTOGRAPH FOR  
APPROVED  
GENERAL  
WASHINGTON





NATIONAL HISTORIC LANDMARK

PUBLICATION OF THIS PHOTOGRAPH IS UN-  
AUTHORIZED UNLESS APPROVED FOR RE-  
LEASE BY A PUBLIC INFORMATION OFFICE  
AT ANY ADDRESS LISTED IN COM-  
MUNICATIONS SECTION  
MEXICO CITY, MEXICO  
PROVED BY THE NATIONAL ARCHIVES  
VISION OF THE NATIONAL ARCHIVES  
MATION OF THE NATIONAL ARCHIVES  
THE ARMY AND NAVAL HISTORICAL CENTER  
25, D. C.

PHOTOGRAPH  
"U. S. ARMY PHOTOGRAPH"

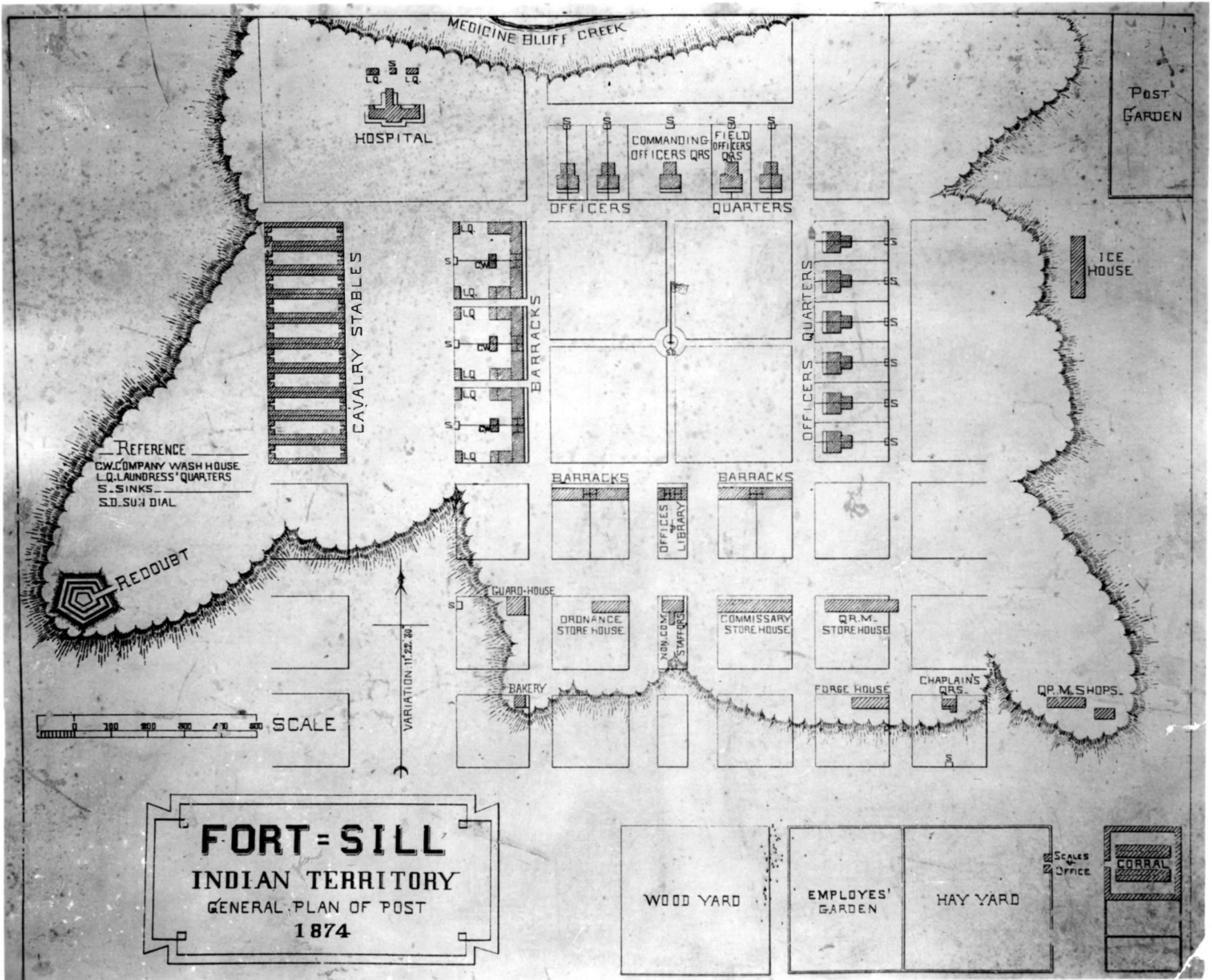


NATIONAL HISTORIC LANDMARK

REPRODUCTION OF THIS PHOTOGRAPH IS UN-  
AUTHORIZED UNLESS APPROVED FOR RE-  
LEASE BY A PHOTO INFORMATION OFFICE  
AT ANY OF THE FOLLOWING OFFICES IN  
MEMPHIS, TENNESSEE  
PROVE VISITORS  
MAY BE  
THE  
25, D. C.

U. S. ARMY PHOTOGRAPHY  
PHOTO CENTER  
MEMPHIS, TENNESSEE

GROUND PLAN OF OLD POST FOR PROPOSED METALFOTO PLACQUE



**FORT SILL**  
 INDIAN TERRITORY  
 GENERAL PLAN OF POST  
 1874







40. Once the post commissary, Hamilton Hall at Fort Sill now houses the Artillery and Missile Center Museum. U. S.

Army photograph.





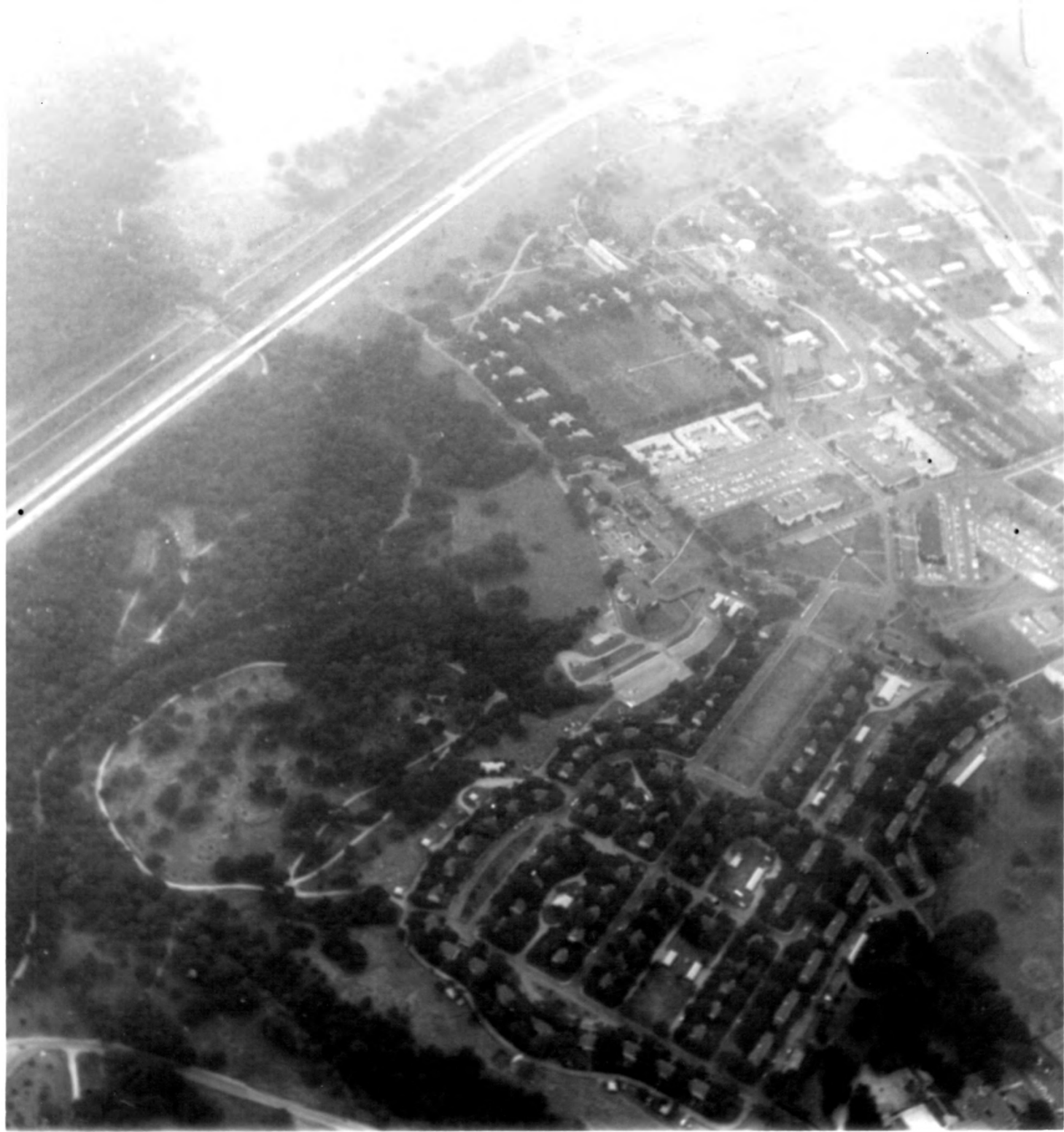
Photo No. 16 following page 150:

Old Quartermaster Storehouse, Fort Sill, Oklahoma

U. S. Army Photo





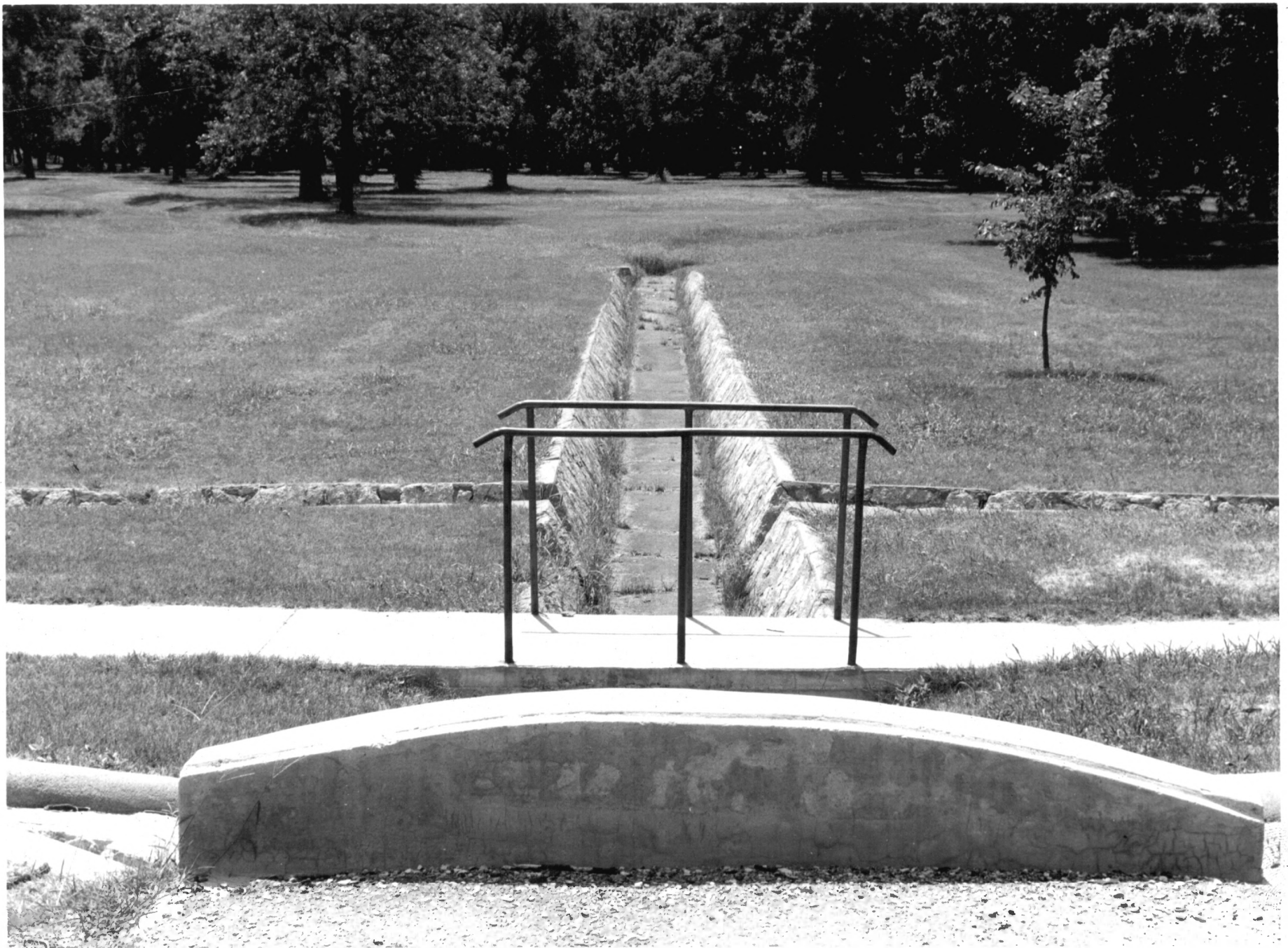












Flippers Ditch, Fort Sill, Oklahoma

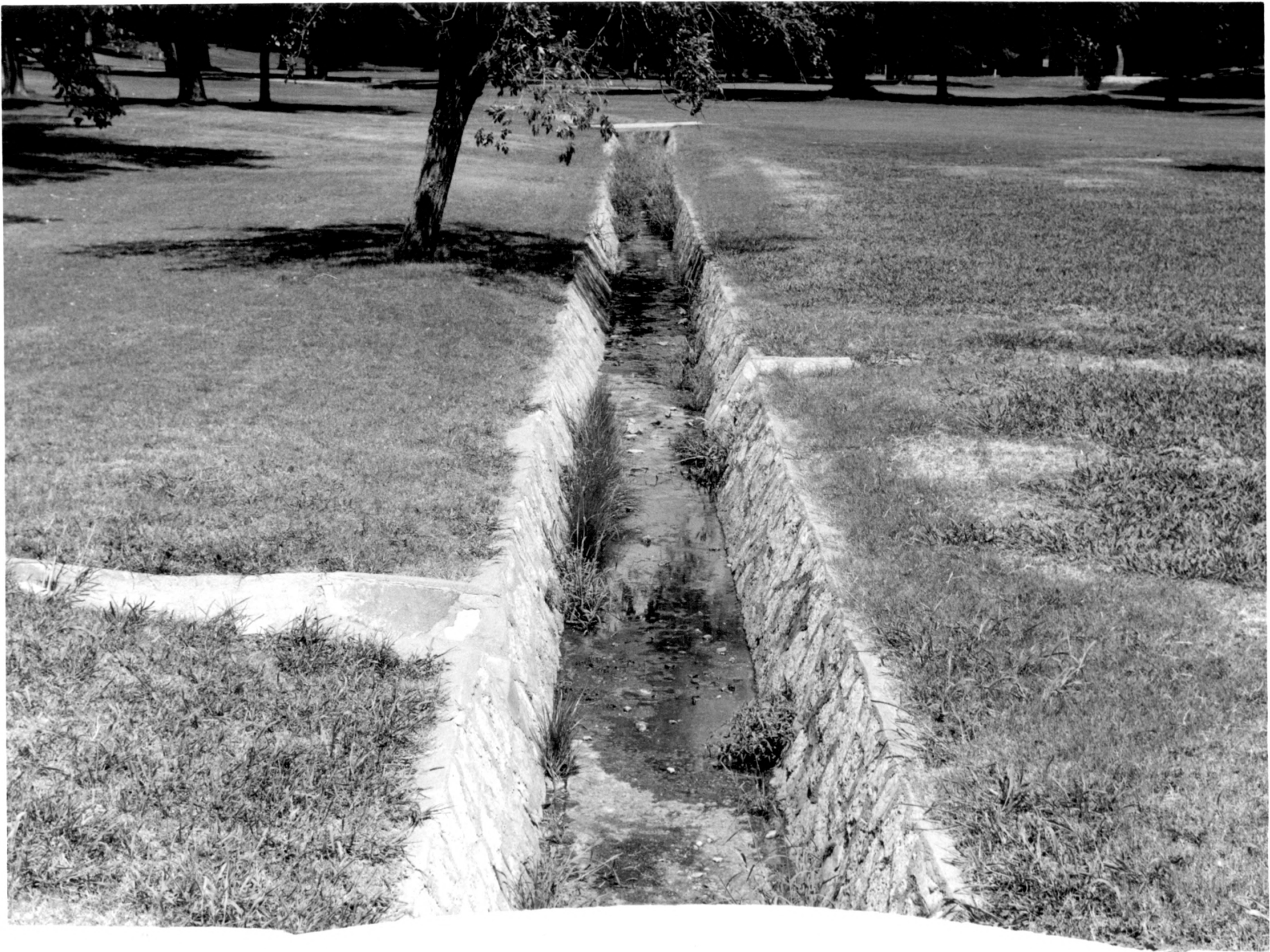
Photograph by U.S. Army Field Artillery and  
Fort Sill Museum for ABC and NPS, 1974

U.S. ARMY FIELD ARTILLERY  
AND FORT SILL MUSEUM  
FORT SILL, OKLAHOMA 73503

Flipper's Ditch  
Fort Sill

OKlahoma (40) Comanche (031)

Identification: Northern half of main artery of Flipper's  
Ditch



U.S. ARMY FIELD ARTILLERY  
AND FORT SILL MUSEUM  
FORT SILL, OKLAHOMA 73503

Flipper's Ditch

Fort Sill

Oklahoma (40). Comanche (031)

Photo Credit: U.S. Army Artillery & Fort Sill Museum

August 1974

Identification: southern half of main artery of Flipper's  
Ditch







Quarry Hill  
Fort Sill, Oklahoma

U.S. ARMY FIELD ARTILLERY  
AND FORT SILL MUSEUM  
FORT SILL, OKLAHOMA 73503

Quarry Hill, Fort Sill, Oklahoma  
Comanche County  
East Range, 6000 Area  
25 Sep 74

Negative Filed: Fort Sill Museum  
View: View from the west looking east,  
Note stratification of limestone  
in cliffwalls





Fort Sill, Oklahoma. Sherman House, quarters  
of the Commanding Officer. Photo May 3, 1957,  
Courtesy U. S. Army.



Fort Sill, Oklahoma. The old corral. U. S. Army  
Photograph, May 3, 1957.



Fort Sill, Oklahoma. South side of Hamilton Hall, old Quartermaster Storehouse which now houses the Artillery and Guided Missile Center Museum. U. S. Army Photograph, May 3, 1957.