



N: Cripple Creek Historic District

LOC: Cripple Creek, Colorado (Teller Cty.)

NO: #1 One Midland Terminal, west elevation,
looking east

Photo Ref: Photog - Joseph Scott Mendinghall, May 1975
Neg. Filed At - Historic Sites survey, DC

photo #1



N: Cripple Creek Historic District
Loc: Cripple Creek, Colorado (Teller Cty)
Z.O: #2 Teller County Courthouse, east elevation,
[El Paso] Looking SW.

Photo Ref: Photog - Joseph Scott Mendinshall, May 1975
Neg. Filed At - Historic sites survey, Washington
DC

photo #2



HOTEL IMPERIAL 56

IMPERIAL
HOTEL

IMPERIAL HOTEL
A LIMITED COMPANY

N: Cripple Creek Historic District

Loc: Cripple Creek, Colorado (Teller Cty.)

IO: # 3 Imperial Hotel,

north + east facades

Looking southwest

Photo Ref: Photog - Joseph Scott Mendinghall, May 1975

Neg Filed at - Historic Sites Survey, DC

photo #3



THE
OLD HOMESTEAD
LATELY BY
CHIPPY CREEK BURNING
PARLOR HOUSES
NOW ON DISPLAY
GRAND TRUNKS OF 18 BONES

No: Cripple Creek Historic District

Loc: Cripple Creek, Colorado (Teller Cty.)

ID: #4 One Old Homestead,
west and south elevations,
looking northeast.

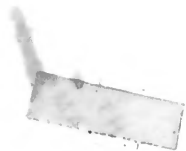
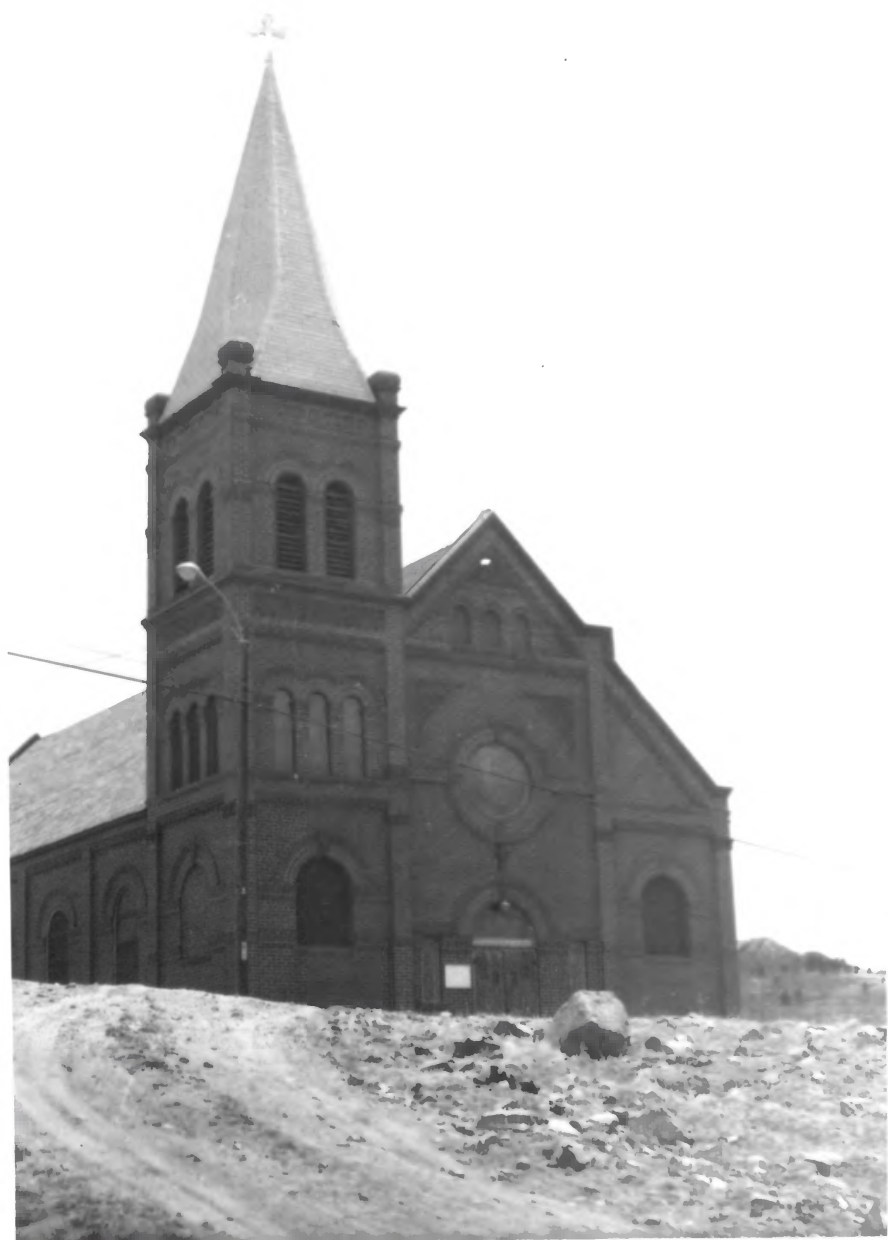


Photo Ref: Photog - Joseph Scott Mendinghall, May 1975
Negative Filed At - Historic Sites Survey, Washington
D.C.

photo #4



N: Cripple Creek Historic District
Loc: Cripple Creek, Colorado (Teller Cty.)
IO: St. Paul's Catholic Church -
west elevation looking southeast.

PHOTO REF: Photog - Joseph Scott Mendinghall, May 1975
Neg Filed At: - Historic Sites Survey, Washington D.C.

Photo #5



N: Cripple Creek Historic District
LOC: Cripple Creek, Colorado (Teller Cty.)

NO: # 6 The Mansard Roof House
South and east elevations
Looking NW.

Photo REF: Photog - Joseph Scott Mendinghall, May 1975
Neg Filed at - Historic Sites
Survey, DC

Photo #6



N: Cripple Creek Historic District

LOC: Cripple Creek, Colorado (Teller Cty).

TO:

#7 Teller County Hospital

South and east elevations, looking NW.

Photo Ref: Photo - Joseph Scott Mendinghall, May 1975

Neg. Filed At - Historic Sites Survey, DC




Photo #7