

United States Department of the Interior
National Park Service

RECEIVED

NOV 15 1993

NATIONAL REGISTER OF HISTORIC PLACES
REGISTRATION FORM

NATIONAL
REGISTER

1. Name of Property

historic name:

other name/site number: Midtown Corinth Historic District

2. Location

street & number: Roughly bound by part of Main and Linden Streets on the north, Washington Street on the west, Bunch Street on the south and Douglas Street on the east.

not for publication: N/A

city/town: Corinth

vicinity: N/A

state: Mississippi code: MS county: Alcorn code: 003 zip code: 38834

3. State/Federal Agency Certification

As the designated authority under the National Historic Preservation Act of 1986, as amended, I hereby certify that this X nomination _____ request for determination of eligibility meets the documentation standards for registering properties in the National Register of Historic Places and meets the procedural and professional requirements set forth in 36 CFR Part 60. In my opinion, the property X meets _____ does not meet the National Register Criteria. I recommend that this property be considered significant _____ nationally _____ statewide X locally. (____ See continuation sheet for additional comments.)

Kenneth H. P. Pool
Signature of certifying official

Nov. 8, 1993
Date

Deputy State Historic Preservation Officer
State or Federal agency and bureau

In my opinion, the property _____ meets _____ does not meet the National Register criteria. (____ See continuation sheet for additional comments.)

Signature of commenting or other official

Date

State or Federal agency and bureau

4. National Park Service Certification

I, hereby certify that this property is:

Entered in the National Register

- entered in the National Register
 ___ See continuation sheet.
- determined eligible for the National Register
 ___ See continuation sheet.
- determined not eligible for the National Register
- removed from the National Register
- other (explain): _____

Guay M. Lapley 12/23/93

for Signature of Keeper Date of Action

5. Classification

Ownership of Property: private public-federal
public-local
public-federal

Category of Property: District

Number of Resources within Property:

Contributing	Noncontributing
229	55 buildings
1	-0- sites
-0-	-0- structures
-0-	-0- objects
230	55 Total

Number of contributing resources previously listed in the National Register: 4

Name of related multiple property listing: N/A

6. Function or Use

Historic: DOMESTIC
 DOMESTIC
 RELIGION
 Current : DOMESTIC
 DOMESTIC
 RELIGION

Sub: Single Dwelling
 Multiple Dwelling
 Religious facility
 Sub: Single Dwelling
 Multiple Dwelling
 Religious facility

7. Description

Architectural Classification:

CRAFTSMAN
 QUEEN ANNE
 COLONIAL REVIVAL
 ITALIANATE

Materials: foundation BRICK
 walls WOOD
 BRICK

roof: ASPHALT
 other: Stucco

United States Department of the Interior
National Park Service

NATIONAL REGISTER OF HISTORIC PLACES
CONTINUATION SHEET

Midtown Corinth Historic District

Section number 7 Page # 1 Corinth, Alcorn County, MS

NARRATIVE DESCRIPTION

The Midtown Corinth Historic District of Corinth, Alcorn County, Mississippi (pop. 11,820, 1990 Census) is an L-shaped, predominately residential area that abuts the central business district on the south and west (See: Downtown Corinth Historic District, NRHP 1/28/1993). The district occupies a portion of the original 1855 Mitchell and Mask Survey for Corinth not platted or developed for commercial uses, along with three other subdivision additions made in ca. 1855-1860. Thirty-three full blocks and thirteen partial blocks are contained within the district as delineated on the accompanying maps.

The street and lot pattern appear, at first glance, to be a simple extension of the regular grid pattern established in the downtown business district. However, on closer examination, the district functions as something of a transition from the orientation of streets in downtown to a different orientation of the street pattern outside of the district to the north and east. The northern portion of the district contains a "break in the grid" that alters the street pattern from a north-northeastern axis to an axis heading due north outside of the district; the eastern portion also contains a grid-break, in which the east-southeast axis of the street pattern shifts to an axis heading due east. The original grid alignment of the Mitchell and Mask Survey was oriented parallel to the right-of-way of the Memphis and Charleston Railroad. The "break in the grid" modifies the street pattern to an orientation more traditionally aligned with Magnetic North as streets exit the district.

Lots within the subdivision pattern of the district do not reflect any regular subdivision pattern, in large part due to the irregular street and block pattern as well as the results of individual lot subdivisions or assemblages of lots through time. Lots range in size from as small as 2500 square feet, to full blocks containing more than an acre. Individual buildings in this district are sited largely facing the north/south streets leading from Downtown Corinth; this design contrasts with the pattern in downtown, where businesses largely face the east/west streets.

Streetscapes within the district are lined with mature trees which span the streets in many places. Common tree species include red oak, pin oak, sycamore, red maple, magnolia, American holly, tulip and red gum. The general landscape characteristics of streetscapes and individual building sites varies widely as a result of its gently rolling topography. Building sites vary from at-grade, to placement on terraces of four-to-six feet in height, occasionally even more. Setbacks from the street also vary greatly, relative to density, from as little as ten feet to as much as forty; the average setback appears to be in the range of twenty-five feet.

The district is predominately residential in character, though there also are church/institutional, public and commercial uses scattered throughout.

United States Department of the Interior
National Park Service

NATIONAL REGISTER OF HISTORIC PLACES
CONTINUATION SHEET

Section number 7 Page # 2 Midtown Corinth Historic District
Corinth, Alcorn County, MS

Some of the non-residential uses contribute to the sense of place and historical development of the district; these include the Fillmore Street Cumberland Presbyterian Church (711 N. Fillmore Street, now part of Fillmore Methodist Church, built ca. 1871); and, the Foote Street Church of Christ (903 Foote Street, built 1923-24).

A key characteristic of the district is its range of residential house types, which includes composite cottages, pyramidal cottages, modified shotguns, center hall plans, double-cribs, saddlebags, four-squares, homestead houses, Capes, and English cottages, to name but a few of the many. The largest populations of house types, by far, are the district's side L-plan cottages and its bungalows-- combined, they represent half of all house types found here. A review of the survey data will reveal that the side L-plan cottage was the most common form of middle-class housing constructed from ca. 1870 to ca. 1910; it was replaced in importance by the bungalow during the period ca. 1905 to 1935. The district also contains a few examples of very rare house types, most notably, the Y-plan cottage (Ijams House, 1203 Waldron Street), and a variation of the Y-plan (1103 Waldron Street). Only three other examples of Y-plan cottages are known to exist in the region, specifically, in Collierville, Tennessee (Y-plan), Senatobia, Mississippi (modified Y-plan), and Union City, Tennessee (modified Y-plan).

Another key characteristic is the district's range of architectural styles, ranging through well-preserved examples of the Greek Revival, Italianate, Gothic Revival, Queen Anne, Colonial Revival, Craftsman, and Tudor Revival, among others. Taken as a whole, the architectural character of the district represents a substantially complete range of the architectural tastes commonly built in America from ca. 1855 to 1940.

There are four structures within the district previously listed upon the National Register of Historic Places (parts of the Siege and Battle of Corinth Historic District nomination, NHL 5/9/91): the Duncan House, 810 Polk Street; Oak Home, 808 Jackson Street; the Fish Pond House, 708 Kilpatrick Street; and, the Veranda House (a.k.a. "Curlee House"), 705 Jackson Street.

INVENTORY METHODOLOGY

The following inventory of structures was prepared to identify basic periods of development activity, house types, architectural styles, and, when possible, the influence of common designers or builders. Wherever possible, construction dates cited were refined by historical research, with the aid of the Sanborn Fire Insurance maps. The inventory is

United States Department of the Interior
National Park Service

NATIONAL REGISTER OF HISTORIC PLACES
CONTINUATION SHEET

Midtown Corinth Historic District

Section number 7 Page # 3 Corinth, Alcorn County, MS

=====

organized by a sequential inventory number, assigned in alphabetical order of street name, by ascending sequence of street address. A historic name for the property, if known, is presented in parentheses following the street address. Buildings which contribute to the historical character of the district retain a good deal of their original architectural character are listed (C). Buildings which do not contribute to the historical character of the district, whether by means of substantial alteration or recent constructions date, are listed (NC). A few buildings have been given the designation (NC*), which is intended to note that while they are considered non-contributing today because of non-historic alterations, their significance to the district may be returned if carefully rehabilitated. For the sake of brevity, the acronym "DH", "DHS", or "DHSL" has been employed to replace "double-hung sash light" as appropriate to the window configuration present in the particular structure.

There are many other elements which contribute to the overall historic character of the district. Among these are major street trees, streets, curbs, sidewalks, street names impressed into the sidewalks, the character of landscaping of a building site, its setbacks front and side, etc. All of these contributing features have been counted as one (1) contributing site resource.

INVENTORY OF STRUCTURES

001 C 203 Bunch Street

One and one-half story, three-bay, frame bungalow with Craftsman influence, built ca. 1910-15. Side gable roof with exposed rafter tails, covered with asphalt shingles. Shed and gable-roofed dormer contains three 9/1 DHSL. Exterior walls have weatherboard siding. Windows are paired 9/1 DHSL. Full-width hip-roofed porch with porte cochere, supported by boxed columns on stuccoed bases; block spindle balustrade. Door is Craftsman multi-light, with multi-light transom and sidelights.

Storage Shed, ca. 1910-15. One-story, three bay, frame storage building with shed roof, weatherboard siding, six-light casement windows; and side shed addition, covered with stucco veneer. (C)

002 C 204 Bunch Street

One-story, three-bay, frame, composite cottage with Queen Anne influence, built ca. 1895-1900. Complex hip and gable roof with boxed cornice, covered with asphalt shingles. Gable ends have fish scale shingles. Exterior

United States Department of the Interior
National Park Service

NATIONAL REGISTER OF HISTORIC PLACES
CONTINUATION SHEET

Section number 7 Page # 4 Midtown Corinth Historic District
Corinth, Alcorn County, MS

=====

204 Bunch Street, continued:

walls have weatherboard siding. Windows are 1/1 DHSL. One-bay, replacement gable-roofed porch supported by boxed columns. Door is a six-panel replacement, with divided-light transom and sidelights.

Storage Shed, ca. 1965-70. One-story, one-bay, frame, flat roof, weatherboard siding. (NC)

003 C 213 Bunch Street

One and one-half story, four-bay, brick veneered bungalow with Craftsman influence, built ca. 1920-25. Side gable roof with exposed rafter tails, covered with asphalt shingles. Two gable dormers connected with center shed roof contains two, 8/1 DHSL. Windows are 1/1 and 9/1 DHSL. Partial width cutaway porch, supported by brick piers; closed brick balustrade. Entrance within recessed, semi-circular arched vestibule, with "eyebrow"-like curved roof. Door is three-light, one-panel Craftsman.

004 C 214 Bunch Street

One and one-half story, three-bay, frame bungalow with Craftsman influence, built ca. 1910-15. Complex gable roof with cross-axial gabled airplane, exposed rafter tails and Mission step brackets, covered with asphalt shingles. Exterior walls covered with vinyl siding. Windows are 1/1 DHSL, in triplets. L-plan, gable front porch supported by boxed, paneled, battered piers on brick bases; block spindle balustrade. Door is six-panel replacement.

Garage, ca. 1910-15. One-story, two-bay, frame, gable roof, weatherboard siding, paired six-light and bead board panel doors. (C)

005 C 401-403 Bunch Street

One-story, five-bay, brick-veneered bungalow duplex with Craftsman influence, built ca. 1915-20. Side gable roof with exposed rafter tails, covered with asphalt shingles. Windows are 1/1 DHSL. L-plan cutaway porch supported by brick piers; closed brick balustrade. Doors are solid replacements.

Garage, ca. 1915-20. One-story, one-bay, load-bearing brick, gable roof, open entry. (C)

United States Department of the Interior
National Park Service

NATIONAL REGISTER OF HISTORIC PLACES
CONTINUATION SHEET

Section number 7 Page # 5 Midtown Corinth Historic District
Corinth, Alcorn County, MS

=====

- 006 NC 905 Bunch Street
One-story, two-bay, frame garage, built ca. 1910-15, altered with second floor addition to Western Ranch Revival ca. 1970-75. Flat roof with boxed cornice, covered with asphalt roofing. Exterior walls have board and batten siding. Windows are 2/2 metal frame and 6/6 metal sash replacements. Door is solid replacement.
- 007 C 915 Bunch Street
One and one-half story, four-bay, frame pyramidal cottage with Colonial Revival influence, built ca. 1905-10. Hip roof with molded box cornice, covered with asphalt shingles. Hip-roofed dormer contains two 1/1 DHSL. Exterior walls covered with Masonite siding. Windows are 4/4 DHS replacements. Full-width cutaway porch supported by wrought iron replacement posts. Door is three-light replacement.
- 008 NC 1001 Bunch Street
One-story, five-bay, frame, modular cottage with Neo-Traditional influence, built in 1991. Side gable roof with cross gable front, boxed cornice, covered with asphalt shingles. Exterior walls have vinyl siding. Windows are 6/6 metal frame sashes. Entrance is a shallow recessed vestibule containing a single-light, double-panel door.
- 009 C 1002 Bunch Street
One and one-half story, three-bay, frame bungalow with Colonial Revival influence, built ca. 1915-20. Side gable roof with boxed cornice, covered with asphalt shingles. Shed-roofed dormer contains three 1/1 DHSL. Exterior wall surfaces covered with weatherboard siding. Windows are 1/1 DHSL, in pairs. Full-width cutaway porch supported by wrought iron replacement posts. Entrance contains a single-light door.
- Garage, ca. 1910-15. One-story, two-bay, load-bearing brick, gable roof. Shared with 1012 Bunch Street. (C)
- 010 C 1011 Bunch Street
One-story, four-bay, frame bungalow with Craftsman influence, built ca. 1915-20. Gable front roof with a molded boxed cornice, covered with asphalt shingles.

United States Department of the Interior
National Park Service

NATIONAL REGISTER OF HISTORIC PLACES
CONTINUATION SHEET

Midtown Corinth Historic District

Section number 7 Page # 6 Corinth, Alcorn County, MS

=====

1011 Bunch Street. continued:

Exterior wall surfaces have weatherboard siding. Windows are 1/1 DHSL. Full-width, gable and hip roofed porch with porte cochere, supported by brick piers with a closed brick balustrade. The entrance is an original single-light door.

Garage, ca. 1915-20. One-story, two-bay, frame, gable roof, weatherboard siding, paired bead board paneled doors. (C)

011 C 1012 Bunch Street

One and one-half story, five bay, brick veneered bungalow with Craftsman influence, built ca. 1915-20. Complex gable roof with fascia board eaves, knee brace brackets, covered with asphalt shingles. Gable dormer with three 4/1 DHSL. Windows are 9/1 and 6/1 DHSL. Partial-width hip porch supported by brick piers; closed brick balustrade. Entrance contains a single-light door.

Garage. Shared with 1002 Bunch Street, which see.

012 C 1015 Bunch Street

One-story, four-bay, frame bungalow with Craftsman influence, built ca. 1915-20. Gable-front roof with exposed rafter tails, knee brace brackets, covered with asphalt shingles. Exterior wall surfaces have weatherboard siding. Windows are 9/1 and 16/1 DHSL, some in triplets. Partial width gable-front porch, and secondary side-gable porch, supported by battered brick piers; closed brick balustrade. Door is a six-panel replacement flanked by multi-light sidelights.

013 C 1103 Bunch Street

One and one-half story, three-bay, frame L-plan cottage with Colonial Revival and Craftsman influences, built ca. 1925-30. Complex gable roof with jerkinheads and boxed cornice with cornice returns, covered with asphalt shingles. Exterior walls have Masonite siding. Windows are 1/1 DHSL, some in pairs. Partial-width, shed-roofed porch with boxed columns on raised bases; closed stuccoed balustrade. Entrance contains original six-panel door, flanked by multi-light sidelights.

United States Department of the Interior
National Park Service

NATIONAL REGISTER OF HISTORIC PLACES
CONTINUATION SHEET

Midtown Corinth Historic District

Section number 7 Page # 7 Corinth, Alcorn County, MS

1103 Bunch Street, continued:

Storage Shed, ca. 1925-30. One-story, one-bay, frame, shed roof with projecting canopy. weatherboard siding. (C)

- 014 C 1106 Bunch Street
One-story, three-bay, frame bungalow with Craftsman influence, built ca. 1925-30. Gable-front roof with exposed rafter tails and knee brace brackets, covered with asphalt shingles. Exterior walls have weatherboard siding. Windows are 3/1 DHSL, in triplets. Full-width, gable and hip roof porch supported by battered boxed piers on brick bases; closed brick balustrade. Entrance is a Craftsman multi-light door flanked by multi-light sidelights.
- 015 C 1107 Bunch Street
One-story, three-bay, brick-veneered bungalow with Craftsman influence, built ca. 1925-30. Complex gable and hip roof with exposed rafter tails, covered with asphalt shingles. Windows are Craftsman multi-light/1 DHSL, some in triplets. Partial width, gable-front porch supported by battered paneled piers on brick bases. Door is a multi-light, multi-panel replacement.

Garage, ca. 1925-30. One-story, one-bay, load-bearing brick, gable roof, replacement doors, metal carport addition. (C)
- 016 C 1108 Bunch Street
One-story, three-bay, frame bungalow with Craftsman influence, built ca. 1925-30. Gable-front roof with exposed rafter tails and knee brace brackets, covered with asphalt shingles. Side, gable-roof dormer contains two 3/1 DHSL. Exterior wall surfaces have weatherboard siding. Windows are 3/1 DHSL, in triplets. Full-width, hip and gable roofed porch, supported by battered boxed piers on brick bases; closed brick balustrade. Entrance is a Craftsman multi-light door flanked by sidelights.
- 017 C 1109 Bunch Street
One and one-half story, three-bay, brick veneered L-plan cottage with Colonial Revival influence, built 1930-35. Gable roofs with exposed rafter tails, covered with asphalt shingles. Windows are 6/6 DHSL, some in

United States Department of the Interior
National Park Service

NATIONAL REGISTER OF HISTORIC PLACES
CONTINUATION SHEET

Section number 7 Page # 8 Midtown Corinth Historic District
Corinth, Alcorn County, MS

=====

1109 Bunch Street, continued:

pairs. Partial-width, shed roof porch supported by grouped boxed columns with a wrought iron balustrade. Entrance contains an original six-panel door.

Storage Shed, ca. 1930-35. One-story, one-bay, brick veneer, gable roof, double bead board paneled doors. (C)

018 C 504 North Cass Street (Weaver Apartments)
Three-story, nine-bay, brick veneered, double-loaded apartment building with Craftsman and Tudor Revival influence, built ca. 1915-20. Complex hip roof with gabled parapet walls, capped with cast concrete coping. Two porch bays project forward of main block, flanking entrance. Decorative features include cast stone pilasters with finials, foliated plaques and belt courses. Windows are 3/1 DHSL, some in pairs. Porches have closed brick balustrades. Entrance contains multi-light door.

019 NC 518 North Cass Street
One-story, four bay, frame double shotgun with Craftsman and Colonial Revival influence, built ca. 1915-20; brick veneer added ca. 1980-85. Gable roof with exposed rafter tails, covered with asphalt shingles. Windows are 1/1 DHSL; front windows are replacements. Porch covered with hip roof supported by replacement boxed columns with a wrought iron replacement balustrade. Entrances contain six-panel replacement doors.

020 NC 704 North Cass Street
One-story, three-bay, frame modified shotgun with Craftsman influence, built ca. 1909-13 and altered ca. 1985 with added brick veneer enclosed porch. Gable roof with exposed rafter tails, covered with asphalt shingles. Windows are 3/1 DHSL; facade has semi-circular arched, 1/1 DHS replacement lights. Entrance has a single-light replacement door.

Garage, ca. 1920-25. One-story, one-bay, frame, gable roof, novelty siding and scored plywood doors. (C)

United States Department of the Interior
National Park Service

NATIONAL REGISTER OF HISTORIC PLACES
CONTINUATION SHEET

Midtown Corinth Historic District
Corinth, Alcorn County, MS

Section number 7

Page # 9

021 C 802 North Cass Street

One and one-half story, three-bay, frame modified composite cottage with Colonial Revival influence, built ca. 1905-09. Complex hip and gable roof with plain projecting cornice. Exterior walls have weatherboard siding. Windows are 1/1 DHSL, some in pairs. L-plan porch covered with hip roof supported by battered, boxed piers on brick bases; closed brick balustrade. Entrance is a single-light, three-panel door.

Garage, ca. 1910-15. One-story, one-bay, frame, gable roof, weatherboard siding. (C)

022 NC 804 North Cass Street

One-story, four-bay, frame saddlebag-like cottage with Colonial Revival influence, built ca. 1950-55. Side gable roof with box cornice, covered with asphalt shingles. Exterior walls have asbestos siding. Windows are 8/8 DHS replacements. Partial width gable-front porch supported by replacement boxed columns. Entrances contain multi-light doors.

023 C 907 North Cass Street

One-story, three-bay, frame saltbox with Colonial Revival influence, built ca. 1895-99. Off-center side gable roof with exposed rafter tails, covered with asphalt shingles. Exterior wall surfaces covered with Masonite siding. Windows are 1/1 DHSL. Full-width porch covered with a shed roof supported by boxed columns. Entrance contains a single-light, three-panel door; another prior door appears to have been enclosed.

024 C 909 North Cass Street

One-story, three-bay, frame saltbox with Colonial Revival influence, built ca. 1895-99. Off-center side gable roof with plain projecting eaves, covered with asphalt shingles. Exterior walls have Masonite siding. Windows are 1/1 DHSL. Full-width porch covered with shed roof, supported by boxed columns. Entrance has a single-light, three-panel door.

025 C 911 North Cass Street

One-story, four-bay, frame double shotgun with Craftsman influence, converted to single-family use ca.

United States Department of the Interior
National Park Service

NATIONAL REGISTER OF HISTORIC PLACES
CONTINUATION SHEET

Midtown Corinth Historic District

Section number 7 Page # 10 Corinth, Alcorn County, MS

911 North Cass Street, continued:

1985-90. Gable front roof with exposed rafter tails, covered with asphalt shingles. Exterior walls have scored plywood siding. Windows are 4/1 DHSL. Full-width porch covered with hip roof and supported by wrought iron replacement posts. Entrances contain multi-light doors.

026 NC 912 North Cass Street

One-story, three-bay, frame Cape with Neo-Traditional influences, built ca. 1980-85. Off-center side gable with boxed cornice, covered with asphalt shingles. Exterior wall surfaces covered with Masonite siding. Windows are 6/6 metal frame sashes. Entrance contains a six-panel door.

027 C 913 North Cass Street

One-story, three-bay, frame bungalow with Craftsman influence, built ca. 1895-99. Side gable roof with exposed rafter tails, covered with asphalt shingles. Shed roofed dormer contains two louvered vents. Exterior walls have Masonite siding. Windows are 12/1 DHSL. Full-width shed-roofed porch supported by wrought iron replacement posts. Entrance contains a Craftsman multi-light door.

028 C 914 North Cass Street

One-story, five-bay, center hall cottage with Minimalist Traditional influence, built ca. 1935-40. Complex gable roofs with boxed cornice, covered with asphalt shingles. Exterior walls covered with weatherboard siding. Windows are 6/1 DHSL. Side flat-roofed porte-cochere supported by brick piers. Entrance contains a six-panel door.

Garage Apartment, ca. 1935-40. Two-story, two-bay, frame, gable roof, weatherboard siding, 6/6 DHSL, double board-paneled doors. (C)

029 C 915 North Cass Street

One-story, four-bay, frame, duplex saltbox with Craftsman influence, built ca. 1895-99. Off-center, side gable roof with boxed cornice, covered with asphalt shingles. Exterior walls covered with weatherboard siding. Windows are 3/1 DHSL. Full-width porch covered with shed roof, supported by wrought iron replacement posts. Entrances contain three-light, three-panel doors.

United States Department of the Interior
National Park Service

NATIONAL REGISTER OF HISTORIC PLACES
CONTINUATION SHEET

Midtown Corinth Historic District

Section number 7 Page # 11 Corinth, Alcorn County, MS

=====

030 C 916 North Cass Street

One-story, three-bay, brick veneered bungalow with Craftsman influence, built ca. 1925-30. Complex gable roofs with exposed rafter tails, covered with asphalt shingles. Windows are 3/1 DHSL. Gable front porch with stucco and half-timbering in gable end, supported by brick piers; closed brick balustrade. Side shed porch supported by brick piers. Entrance contains a Craftsman multi-light door.

031 C 920 North Cass Street

One-story, three-bay, frame bungalow with Craftsman influence, built ca. 1905-09. Complex gable-front roofs with exposed rafter tails and knee brace brackets, covered with asphalt shingles. Exterior wall surfaces covered with weatherboard siding. Windows are 1/1 DHSL, in triplets. Gable-front porch supported by battered boxed piers on brick bases; side carport added ca. 1945-50. Entrance contains a Craftsman multi-light door flanked by multi-light sidelights.

032 C 922 North Cass Street

One-story, four-bay, frame bungalow with Craftsman influence, built ca. 1915-20. Complex gable-front roofs with sided eaves, covered with asphalt shingles. Exterior walls have vinyl siding. Windows are 1/1 DHSL, in triplets. Shed roof porch supported by replacement metal columns on raised brick bases; gable-roofed porte cochere added ca. 1925-30. Entrance contains a single-light door.

033 C 924 North Cass Street

One-story, four-bay, brick veneered English cottage with Tudor Revival influence, built ca. 1925-30. Complex gable roof with flush eaves, covered with asphalt shingles. Two gable-roofed dormers each contain 6/6 DHSL. Gable ends contain stucco and half-timbering. Decorative brickwork on chimney. Windows are 6/6 DHSL, some in pairs. Secondary side cutaway porch supported by brick piers. Entrance in front-projecting vestibule contains a semi-circular arched reveal with a nine-light door.

Garage, ca. 1925-30. One-story, one-bay, brick veneered, gable roof. (C)

United States Department of the Interior
National Park Service

NATIONAL REGISTER OF HISTORIC PLACES
CONTINUATION SHEET

Section number 7 Page # 12 Midtown Corinth Historic District
Corinth, Alcorn County, MS

=====

034 NC 207 Childs Street

Two-story, two-bay, brick veneered T-plan house with Colonial Revival influence, built ca. 1950-55. Gable front roof with boxed cornice and cornice returns, covered with asphalt shingles. Windows are 6/6 DHSL. Entrance features a six-light, four panel door.

035 C 214 Childs Street

One and one-half story, five-bay, frame pyramidal cottage with Queen Anne and Colonial Revival influences, built ca. 1900-05. Hip roof with boxed cornice, covered with cast concrete shingles. Front and side hip roofed dormers each contain three 1/1 DHSL. Exterior walls have weatherboard siding. Windows are 1/1 DHSL; a bay window is featured to one side. L-plan cutaway porch is supported by boxed columns on brick bases. The entrance features a single-light, three-panel door.

Garage, ca. 1910-15. One-story, two-bay, frame, gable roof, weatherboard siding, bead board paneled double-leaf double doors. (C)

036 NC 1101 Cruise Street

One-story, five-bay, brick veneered concrete block masonry office building with Modernist influence, built ca. 1970-75. Flat roof with metal cornice and coping, covered with built-up asphalt roofing. Center, three bay block with pre-cast washed aggregate panels flanked by window-less wings. Double-door entrance at center topped with transom and sidelights, flanked with fixed full-height single display lights. Corinth School District Office.

037 NC 1106 Cruise Street (Rev. Elias Rogers Home)

One-story, three-bay, frame, center hall plan cottage with Colonial Revival influence, built ca. 1860 with additions and alterations in 1920-25 and 1950-55. Side gable roof with boxed cornice, covered with asphalt shingles. Two, gable-front dormers each contain a 6/6 DHSL. Exterior wall surfaces covered with permastone, installed in ca. 1950-55. Windows are 6/6 DHSL in bays. Entrance contains a single-light door. This structure has lost integrity due to alterations.

038 C 1119 Cruise Street

One and one-half story, four-bay, frame bungalow with Craftsman influence, built ca. 1910-15. Side gable roof with exposed rafter tails, covered with asphalt shingles.

United States Department of the Interior
National Park Service

NATIONAL REGISTER OF HISTORIC PLACES
CONTINUATION SHEET

Midtown Corinth Historic District

Section number 7 Page # 13 Corinth, Alcorn County, MS

=====

1119 Cruise St., continued:

Shed-roofed dormer contains three single-light casements. Exterior wall surfaces have weatherboard siding. Windows are 1/1 DHSL. L-plan cutaway porch supported by boxed columns. Entrance contains a multi-light door.

039 C 1120 Cruise Street

Two-story, three-bay, frame, Gothic center gable house with altered Colonial Revival influence, built ca. 1890-95. Side gable roof with center gable-end, and rear shed roof with boxed cornice, covered with asphalt shingles. Exterior walls have asbestos siding. Windows are 1/1 DHSL. Full-width hip roofed porch supported by boxed columns. Entrance contains a solid replacement door.

040 C 1124 Cruise Street

One-story, four-bay, frame, pyramidal cottage with Colonial Revival influence, built ca. 1905-10. Complex hip roof with boxed cornice, covered with asphalt shingles. Hip-roofed dormer has three single-light casements. Exterior walls have weatherboard siding. Windows are 1/1 DHSL. U-plan porch covered with hip roof supported by columns with Doric capitals. Entrance contains a single-light, three-panel door topped by a single-light transom.

041 C 1125 Cruise Street

Two-story, four bay, frame Homestead house with Queen Anne Revival influence, built ca. 1890-95. Complex hip and gable roof with plain projecting eaves, covered with asphalt shingles. Gable ends contain fish scale shingles. Exterior walls have weatherboard siding. Windows are 1/1 DHSL, with side bay window arrangement. L-plan porch covered with hip roof supported by turned posts; turned spindle balustrade. Entrance contains a single-light, single-panel door topped by a single-light transom.

042 C 1204 Cruise Street

Two-story, three-bay, frame modified four-square with Craftsman influence, built ca. 1905-10. Hip roof with exposed rafter tails, covered with asphalt shingles. Exterior walls have weatherboard siding. Windows are 1/1 DHSL. U-plan porch covered with hip roof supported by battered boxed piers on boxed bases. Entrance contains a single-light door.

United States Department of the Interior
National Park Service

NATIONAL REGISTER OF HISTORIC PLACES
CONTINUATION SHEET

Midtown Corinth Historic District

Section number 7 Page # 14 Corinth, Alcorn County, MS

=====

- 043 C 404 Douglas Street (Zachery House)
One-story, four-bay, frame, modified composite cottage with Colonial Revival and Queen Anne influence, built ca. 1905-10. Complex hip and gable roof with molded boxed cornice with cornice returns, covered with asphalt shingles. Gable ends contain sawtooth shingles. Exterior walls have Masonite siding. Windows are 1/1 DHSL. Partial width porch covered with hip roof supported by replacement boxed columns; block spindle balustrade. Entrance contains a six-panel replacement door.
- Garage, ca. 1925-30. One-story, one-bay, frame, gable roof, Masonite siding. (C)
- 044 C 414 Douglas Street
One and one-half story, five-bay, frame bungalow with Craftsman influence, built ca. 1910-1915. Side gable roof with exposed rafter tails, covered with asphalt shingles. Gable-front dormer contains three 6/1 DHSL. Exterior walls have weatherboard siding. Windows are 6/1 and 9/1 DHSL. Full-width, former U-plan cutaway porch supported by brick piers; closed brick balustrade. Side porch areas left and right enclosed ca. 1970-75. Entrance contains a single-light door flanked by sidelights.
- 045 NC 501 Douglas Street
One-story, six-bay, brick veneered cottage with Minimalist Traditional influence, built ca. 1950-55. Side gable roof with boxed cornice, covered with asphalt shingles. Windows are 8/8 DHSL; a three-part "picture" window is placed to side of entrance. Single-bay porch covered with gable roof supported by boxed columns. Entrance contains a six-light, one-panel door.
- 046 C 602 Douglas Street
Two-story, five-bay, frame modified four-square with Craftsman and Colonial Revival influences, built ca. 1905-10; converted to apartments ca. 1950-55. Gable-front roof with exposed rafter tails, covered with asphalt shingles. Exterior walls have weatherboard siding. Windows are 3/1 DHSL. Full-width, hip-roofed porch supported by boxed columns. Entrance contains a three-light, three-panel Craftsman door.
- 047 C 712 Douglas Street
One-story, three-bay, brick veneered bungalow with Craftsman influence, built ca. 1920-25. Complex gable roof with exposed rafter tails, covered with asphalt shingles.

United States Department of the Interior
National Park Service

NATIONAL REGISTER OF HISTORIC PLACES
CONTINUATION SHEET

Section number 7 Page # 15 Midtown Corinth Historic District
Corinth, Alcorn County, MS

=====

712 Douglass Street, continued:

Windows are 6/6 DHS replacement lights. Partial width, flat-roofed porch is an alteration ca. 1970-75, supported by wrought iron posts. Entrance is a six-light replacement door.

048 C 714 Douglas Street

One-story, three-bay, frame L-plan cottage with Colonial Revival influence, built ca. 1920-25. Complex gable roof with boxed cornice, covered with asphalt shingles. Exterior wall surfaces covered with asbestos siding. Windows are 4/1 DHSL, some in triplets. Entrance set within open pedimented surround with cornice returns and boxed pilasters; it contains a solid replacement door topped with a single-light transom.

049 NC 801 Douglas Street

One and one-half story, six-bay, frame center hall tract house with Neo-Traditional influence, built ca. 1990. Side gable roof with boxed cornice, covered with asphalt shingles. Exterior walls covered with vinyl siding. Windows are 6/1 metal frame lights. Full-width shed-roofed porch supported by boxed piers. Entrance contains a fan light/ four-panel door.

050 C 815 Douglas Street

One-story, three-bay, frame bungalow with Craftsman influence, built ca. 1915-20. Gable-front roof with exposed rafter tails, covered with asphalt shingles. Exterior walls have weatherboard siding. Windows are 3/1 DHSL, in pairs and triplets. Partial-width, gable-front porch with side porte cochere, supported by battered paneled piers on raised brick bases. Entrance contains a six-panel replacement door.

051 C 917 Douglas Street

One-story, three-bay, frame bungalow with Craftsman influence, built ca. 1905-10. Gable-front roof with exposed rafter tails, covered with asphalt shingles. Exterior walls have Masonite siding. Windows are 3/1 DHSL, some in pairs. Full-width, hip-roofed porch supported by boxed columns on brick bases. Entrance contains a three-light, three-panel Craftsman door flanked by sidelights.

052 C 923 Douglas Street

One-story, two-bay, frame bungalow with Craftsman influence, built 1915-20. Gable-front roof with box

United States Department of the Interior
National Park Service

NATIONAL REGISTER OF HISTORIC PLACES
CONTINUATION SHEET

Midtown Corinth Historic District

Section number 7 Page # 16 Corinth, Alcorn County, MS

=====

923 Douglass Street, continued:

cornice, covered with asphalt shingles. Exterior wall surfaces covered with vinyl siding. Windows are 3/1 DHSL, in pairs. Partial width hip-roofed porch and added side-gable porte cochere supported by battered boxed piers on brick bases. Entrance contains a Craftsman multi-light door.

053 C 925 Douglas Street

One-story, four-bay, frame pyramidal cottage with Colonial Revival influence, built ca. 1915-20. Hip roof with boxed cornice, covered with standing seam metal roof. Exterior walls have weatherboard siding. Windows are 6/6 DHS replacements. Partial-width, shed-roofed porch supported by box columns on brick bases.

054 NC 937 Douglas Street

One-story, three-bay, frame double-crib with Minimalist Traditional influence, built in 1905-10 and altered ca. 1990. Side gable roof with flush eaves, covered with asphalt shingles. Exterior walls have vinyl siding. Windows are 2/2 metal frame replacements. Full-width, shed-roofed porch supported by wrought iron replacement posts. One entrance enclosed. Surviving entrance contains an original six-light, two-panel door.

055 C 711 North Fillmore Street (Fillmore St. Cumberland Presbyterian)

One-story, five-bay, load-bearing brick church building with Gothic Revival influence, built 1871, with front facade alterations ca. 1900-05. Gable roof with brick crenelated cornices, covered with pressed metal shingles. Side main and side secondary steeple with gablets. Steeples connected with vestibule, containing entrances of five-panel doors. Regularly-spaced engaged step buttresses support walls. Gothic-arched, stained-glass windows set within Gothic-arched recessed panels. Two-story, five-bay, gable-roofed rear wing added ca. 1900-05, with gable end parapet walls, 6/1 DHSL.

056 C 714 North Fillmore Street

Two-story, five-bay, brick veneered four-square with Craftsman and Italian Renaissance influences, built 1922. Hip roof with exposed rafter tails, covered with asphalt shingles. Three hip roofed dormers each contain three 3/1 DHSL. Windows are 9/1 DHSL, and multi-light, double-leaf doors on the first floor. Symmetrical one-story, one-bay side wings have elliptical multi-light windows. Partial-width front porch

United States Department of the Interior
National Park Service

NATIONAL REGISTER OF HISTORIC PLACES
CONTINUATION SHEET

Midtown Corinth Historic District

Section number 7 Page # 17 Corinth, Alcorn County, MS

714 North Fillmore Street, continued:

covered with arched roof with flat wings, supported by fluted columns with Doric capitals. Multi-light door.

Garage, ca. 1920-25. One-story, two-bay, brick veneer, hip roof, replacement doors. (C)

- 057 NC 801 North Fillmore Street (First United Methodist Church)
One-story,, three-bay, brick veneered, metal canted-frame church sanctuary with L-plan, two-story office and Sunday School wing, with Modernist influence, built ca. 1965-70. Sanctuary is Gable-front center bay with flanking flat-roofed wings, covered with asphalt roofing. Center bay composed of gridded metal-frame lights, containing metal, single-light double door. L-plan portion covered with flat roof, with covered two-level balconies, fixed light sashes and single-light doors.
- 058 C 808 North Fillmore Street (Oak Home)
One-story, five-bay, post and timber center hall plan cottage with Greek Revival influence, built in ca. 1857 with side, two bay addition ca. 1930-35. Hip roof with boxed cornice and full entablature, covered with asphalt shingles. Exterior wall surfaces covered with weatherboard siding. Windows are 6/6 DHSL. Tetrastyle pedimented portico supported by boxed Doric columns. Entrance contains a six-panel replacement door with divided light transom and sidelights. Included in Siege and Battle of Corinth NHL, NR 5/9/91.
Garage, ca. 1930-35. One-story, three-bay, frame, gable roof, weatherboard siding. (C)
Garden House, ca. 1930. One-story, three-bay, gable roof. (C)
- 059 C 901 North Fillmore Street
Two-story, two-bay, brick veneered modified townhouse with Spanish Revival influence, built ca. 1915-20, altered ca. 1930-35. Side gable roof with plain projecting eaves, covered with pantile roofing. Windows are 6/6 DHSL. One-bay front-projecting vestibule with flat roof and turned roof balustrade, with an elliptical arched opening. Entrance contains a multi-light double-door.
- 060 C 903 North Fillmore Street (McCullar Home)
One-story, three-bay, brick and stone veneered bungalow with Craftsman influence, built 1924. Side gable roof with exposed rafter tails, covered with asphalt

United States Department of the Interior
National Park Service

NATIONAL REGISTER OF HISTORIC PLACES
CONTINUATION SHEET

Midtown Corinth Historic District

Section number 7 Page # 18 Corinth, Alcorn County, MS

903 North Fillmore Street, continued:

shingles. Shed-roofed dormer contains four multi-light casement windows. Windows are Craftsman multi-light/1 DHSL. Full-width cutaway porch and side-gable porte cochere supported by segmental-arched arcade of quarry-faced ashlar; closed ashlar balustrade. Entrance contains an eight-light Craftsman door.

061 C 904 North Fillmore Street (Striplin House)

One and one-half story, three-bay, frame modified composite cottage with Colonial Revival influence, built 1907. Complex gable and hip roof with boxed cornice, covered with asphalt shingles. Closed gable dormers contain two 1/1 DHSL. Exterior walls have weatherboard siding. Windows are 6/1 DHSL. Full-width, hip-roofed porch with center gable supported by columns with Doric capitals and Tuscan shafts, on boxed bases. Entrance contains an eight-panel door topped by a single-light transom.

062 C 915 North Fillmore Street

One-story, three-bay, brick veneered center hall cottage with Colonial Revival influence, built ca. 1860 and altered ca. 1931. Hip roof with boxed cornice, covered with asphalt shingles. Windows are 6/6 and 9/9 DHSL, some in triplets. Side flat-roofed porch supported by Doric columns; enclosed side porch covered with weatherboard. Partial-width pedimented portico covered with gabled roof supported by paired Doric columns on Tuscan shafts. Entrance contains a four-panel door; sidelights.

Garage, ca. 1930-35. One-story, one-bay, brick veneered, gable roof with jerkinhead. (C)

063 C 924 North Fillmore Street (Bynum House)

Two-story, three-bay, frame, Homestead type house with Colonial Revival and Craftsman influences, built ca. 1890-95 and altered ca. 1910-15. Complex hip roof with exposed rafter tails, covered with asphalt shingles. Exterior walls have weatherboard siding. Windows are 1/1 DHSL, some in triplets. Glassed L-plan, hip-roofed porch with one-bay, second-floor porch, supported by battered boxed piers; closed brick balustrade. Entrance contains a multi-light, four panel door.

Carriage House, ca. 1890-95. One-story, two-bay, load-bearing brick, flat roof, segmental-arched fixed light window. (C)

(8-86)

United States Department of the Interior
National Park Service

NATIONAL REGISTER OF HISTORIC PLACES
CONTINUATION SHEET

Midtown Corinth Historic District

Section number 7 Page # 19 Corinth, Alcorn County, MS

064 C 1004 North Fillmore Street

One and one-half story, three-bay, frame side hall cottage with Second Empire influence, built in ca. 1875-80, and altered ca. 1900-10. Hip on Mansard roof, boxed cornice, frieze and paired brackets, covered with asphalt shingles. Gable-roofed dormers contain 2/2 DHSLS. Exterior walls have weatherboard siding. Windows are 2/2 DHSLS. Porch is one-bay, gabled portico with Doric columns; side (original front) porch has flared hip roof, Doric columns. Door is multi-light replacement.

065 C 1005 North Fillmore Street (Mayor Stewart House)

One-story, three-bay, load-bearing brick masonry L-plan cottage with Italianate influence, built ca. 1870-75. Gable roof with boxed cornice and cornice returns, covered with asphalt shingles. Windows are 2/2 DHSLS, set in segmental arched reveals. Partial-width, hip-roofed porch supported by wrought iron replacement posts. Entrance contains a six-panel door flanked by sidelights.

066 NC 1020 North Fillmore Street

One-story, five-bay, brick veneered center hall cottage with Colonial Revival influence, built ca. 1960-65. Side gable roof with boxed cornice, covered with asphalt shingles. Windows are 6/6 DHSLS. Partial-width, pedimented tetrastyle portico supported by columns with Doric capitals on Tuscan shafts. Entrance contains a six-panel door flanked by sidelights.

067 C 1022 North Fillmore Street (Taylor House)

One and one-half story, five-bay, center-gable, T-plan cottage with Gothic Revival influence, built ca. 1870-75. Side-gable roof with center-front gable, plain projecting eaves and bargeboard, covered with asphalt shingles. Two gable-roofed wall dormers have 2/2 DHSLS. Exterior walls have weatherboard siding; sheathing at porch. Windows are 2/2 DHSLS. Full-width, shed-roofed porch with octagonal columns, Tudor-arched valence. Entrance is single-light, single-panel, with full transom and sidelights.

Garage/Apartment, ca. 1880-90. One and one-half story, two-bay, frame, gable roof, weatherboard siding, 6/6 DHSLS.
(C)

United States Department of the Interior
National Park Service

NATIONAL REGISTER OF HISTORIC PLACES
CONTINUATION SHEET

Section number 7 Page # 20 Midtown Corinth Historic District
Corinth, Alcorn County, MS

=====

- 068 NC 1023 North Fillmore Street (Corinth Public Library)
Two-story, five-bay, asymmetrical-plan library building with Modernist influence, built ca. 1970-75. Flat roofs with band cornices, covered with built-up asphalt roofing. Exterior walls decorated with cast concrete band courses. Windows are four-light, sliding window/doors. Entrance located in recessed vestibule off-street, containing a pair of single-light, metal-frame doors.
- 069 C 903 Foote Street (Foote Street Church of Christ)
One-story, seven-bay, brick veneered church building with Colonial Revival influence, built 1923-24. Hip roof behind parapet wall, with asphalt roofing. Exterior walls have cast stone and brick cornice, with cast stone string courses between levels. Windows are 1-fixed over 1/1 DHS stained glass lights. Pediment above distyle in antis entry, flanked by columns with Tuscan shafts and Doric capitals. Semi-circular arched entrance with double-leaf doors. Two-story annex added ca. 1965-70.
- 070 C 903 (A) Foote Street
One and one-half story, four-bay, frame composite cottage with Colonial Revival influence, built ca. 1915-20. Gable roof with cross-axial, gable-roofed airplane, boxed cornice, covered with asphalt shingles. Gable end contains two 9/1 DHSL. Exterior walls covered with weatherboard siding. Windows are 9/1 and 16/1 DHSL. L-plan hip-roofed porch with hipped porte cochere, supported by columns with fluted shafts and Ionic capitals on brick bases. Entrance contains a three-light replacement door.
- 071 C 1003 Foote Street (a.k.a. 600 Madison)
Two-story, three-bay, frame four-square with Colonial Revival influence, built ca. 1900-04. Complex hip roof with boxed cornice, covered with copper shingles. Gable dormer contains a single-light window. Exterior wall surfaces have weatherboard siding. Windows are 1/1 DHSL. L-plan porch covered with hip roof supported by boxed columns. Entrance contains a single-light door.
- 072 C 1015 Foote Street
One-story, three-bay, frame composite cottage with Colonial Revival influence, built ca. 1904-09. Complex hip and gable roof with boxed cornice, covered with asphalt shingles. Gable-roofed dormer has a pair of 1/1 DHSL. Exterior walls have weatherboard siding. Windows are 1/1 DHSL, some in pairs. L-plan porch covered with hip roof supported by boxed columns; replacement block spindle balustrade. Entrance contains a six-panel replacement door.

United States Department of the Interior
National Park Service

NATIONAL REGISTER OF HISTORIC PLACES
CONTINUATION SHEET

Midtown Corinth Historic District
Corinth, Alcorn County, MS

Section number 7

Page # 21

073 NC 1017 Foote Street
One-story, two-bay, frame office building with Neo-Traditional influence, built ca. 1985-90. Complex hip and gable roof with flush eaves, covered with asphalt shingles. Exterior wall surfaces covered with weatherboard siding. Windows are 1/1 metal-frame sash lights. Cutaway corner porch supported by boxed piers; block spindle balustrade. Entrance contains a single light door flanked by sidelights.

074 NC 1025 Foote Street
One-story, six-bay, brick-veneered office building with Minimalist Modern influence, built ca. 1980-85. Flat roof with Mansard-like skirt and flush eaves, covered with asphalt shingles. Windows are three-light fixed sashes. A simple stoop serves as the porch, with a wrought iron balustrade. Entrance is a solid door.

075 C 809 North Franklin Street
One-story, three-bay, brick veneered, center hall saltbox-like cottage with Colonial Revival influence, built ca. 1920-24. Side off-center gable roof with boxed cornice, covered with asphalt shingles. Gable dormer contains three 9/1 DHSL. Windows are 15/1 DHSL. Full-width, hip-roofed porch supported by grouped boxed columns. Entrance contains a single-light door topped by a divided light transom and full sidelights.

Garage, ca. 1920-24. One-story, two bay, frame, hip roof with added cupola, weatherboard siding, nine-light casement windows. (C)

076 C 903 North Franklin Street
One-story, three-bay, frame L-plan cottage with Queen Anne influence, built ca. 1885-90. Gable roofs with plain projecting eaves, covered with asphalt shingles. Exterior walls covered with weatherboard siding. Gable ends covered with fish scale shingles with scroll-sawn gable ornament. Windows are 1/1 DHSL. Partial-width, gable and shed-roofed porch supported by turned posts with scroll sawn brackets and turned spindle frieze. Entrance contains a single-light, two-panel door.

077 C 904 North Franklin Street (McCullar House)
Two-story, five-bay, frame T-plan house with Colonial Revival influence, built ca. 1909-13. Complex gable roof with flush eaves, covered with asphalt shingles. Exterior walls have weatherboard siding. Windows are 6/1 DHSL. One-bay vestibule with projecting gabled hood and oval vault. Entrance contains a six-panel door topped with an elliptical fanlight and leaded sidelights.

United States Department of the Interior
National Park Service

NATIONAL REGISTER OF HISTORIC PLACES
CONTINUATION SHEET

Midtown Corinth Historic District

Section number 7 Page # 22 Corinth, Alcorn County, MS

078 C 905 North Franklin Street

One-story, four-bay, brick veneered bungalow with Colonial Revival influence, built ca. 1920-24. Complex hip roof with boxed cornice, covered with asphalt shingles. Gable-roofed dormer contains a single-light casement. Windows are 1/1 DHSL. Partial-width, hip-roofed porch supported by modified boxed columns. Entrance contains a multi-light door.

079 C 906 North Franklin Street

Two-story, three-bay, frame, four-square with Craftsman influence, built ca. 1909-13. Hip roof with exposed rafter tails, covered with cast concrete roofing. Hip roofed dormer contains three louvered dormers. Exterior walls covered with weatherboard siding. Windows are 4/1 DHSL, some in triplets. Full-width hip-roofed porch covered with standing seam metal roofing, supported by battered brick piers; closed brick balustrade. Entrance contains a replacement single-light, four-panel door.

080 C 912 North Franklin Street

One-story, three-bay, frame saddlebag with Greek Revival and Colonial Revival influences, built ca. 1870-75 and altered ca. 1910-15. Side gable roof with boxed cornice and full entablature, covered with asphalt shingles. Exterior walls covered with weatherboard siding. Windows are 1/1 DHSL. Full width, hip-roofed porch supported by boxed columns, from 1910-15 alteration. Entrance contains a single-light, six-panel door.

081 C 914 North Franklin Street

One-story, three-bay, frame pyramidal cottage with Craftsman influence, built ca. 1899-04; altered ca. 1915-20. Hip roof with exposed rafter tails, covered with asphalt shingles. Exterior walls covered with weatherboard siding. Windows are 1/1 DHSL. Full-width, hip-roofed porch supported by battered boxed piers; closed paneled balustrade. Entrance contains a Craftsman single-light, single-panel door.

082 C 916 North Franklin Street

One-story, three-bay, frame pyramidal cottage, built as shotgun ca. 1880-85; altered to pyramidal cottage ca. 1900-04, with Colonial Revival influence. Hip roof with boxed cornice, covered with asphalt shingles. Exterior walls have weatherboard siding. Windows are 1/1 DHSL. Full-width, hip-roofed porch supported by turned posts; replacement turned spindle balustrade. Entrance is a single-light, two-panel door.

United States Department of the Interior
National Park Service

NATIONAL REGISTER OF HISTORIC PLACES
CONTINUATION SHEET

Midtown Corinth Historic District

Section number 7 Page # 23 Corinth, Alcorn County, MS

=====

083 NC 701 Gloster Street

One and one-half story, five-bay, frame, L-plan and garage-front house with Neo-Colonial Revival influence, built ca. 1988. Side gable roof with boxed cornice, covered with asphalt shingles. Two gable dormers each have 6/6 DHSL. Exterior wall surfaces covered with weatherboard siding. Windows are 6/6 DHSL. Entrance contains a six-panel door.

084 C 811 Gloster Street (Norwood House)

Two-story, three-bay, brick-veneered, side-hall house with French Eclectic influence, built 1908 as a Craftsman bungalow and altered to the French Eclectic in 1919. Hip roof with boxed cornice, covered with asphalt shingles. Eyebrow dormers contain louvers. Windows are Craftsman multi-light/1 DHSL. One-bay porch with flared hip roof, supported by wrought iron replacement posts; secondary hip-roofed porch to side. Entrance contains a six-panel door flanked by sidelights.

085 C 812 Gloster Street

One-story, three-bay, frame composite cottage with Colonial Revival influence, built ca. 1905-10. Hip and gable roof with a molded boxed cornice, covered with asphalt shingles. Gable-roof dormer contains a pair of four-light casements. Exterior walls have weatherboard siding. Windows are 1/1 DHSL. Entrance has pediment with frieze, with Doric pilasters flanking door added ca. 1970-75; a side porch is covered with a gable roof supported by boxed columns. Entrance is six-panel replacement door.

086 C 902 Gloster Street

One and one-half story, four-bay, frame modified composite cottage with Colonial Revival influence, built ca. 1905-09. Complex hip and gable roof with boxed cornice, cross-axial, gable-roofed airplane, covered with asphalt shingles. Hip-roofed dormer contains a 1/1 DHSL. Exterior walls have weatherboard siding. Windows are 3/1 DHSL. Full-width, hip roofed porch supported by boxed columns. Entrance contains a three-light, three-panel door.

United States Department of the Interior
National Park Service

NATIONAL REGISTER OF HISTORIC PLACES
CONTINUATION SHEET

Midtown Corinth Historic District

Section number 7 Page # 24 Corinth, Alcorn County, MS

=====
087 C 906 Gloster Street

One and one-half story, three-bay, frame bungalow with Craftsman influence, built ca. 1915-20. Side gable roof with exposed rafter tails, knee-brace brackets, covered with asphalt shingles. Gable-front dormer contains three 3/1 DHSL. Exterior walls have weatherboard siding. Windows are 4/1 DHSL, some in pairs. Full-width, cutaway porch supported by brick piers and battered boxed piers on brick bases; closed brick balustrade. Entrance contains a single-light door.

Garage, ca. 1915-20. One-story, one-bay, frame, gable, shiplap siding. (C)

088 C 908 Gloster Street

One-story, three-bay brick veneered transitional bungalow/ English cottage with Tudor Revival influence, built ca. 1925-30. Complex gable roof with jerkinheads and boxed cornice, covered with asphalt shingles. Windows are 6/6 DHSL, some in pairs. Entrance contained in recessed semi-circular arched vestibule, with replacement six-panel door.

089 C 911 Gloster Street

One and one-half story, three-bay, frame bungalow with Craftsman influence, built ca. 1925-30. Side gable roof with exposed rafter tails, covered with asphalt shingles. Gable-front dormer contains three 3/1 DHSL. Exterior walls have vinyl siding. Windows are 3/1 DHSL, some in pairs. Partial-width, cutaway porch supported by boxed piers on brick bases; closed brick balustrade. Entrance contains a replacement six-panel door.

090 C 913-915 Gloster Street

One-story, four-bay, brick veneered double-shotgun duplex with Tudor and Craftsman influence, built ca. 1925-30. Side gable roof with jerkinheads, front-facing jerkinhead gablets over entrances, exposed rafter tails, covered with asphalt shingles. Windows are 4/1 DHSL, in pairs. A full-width, raised patio spans the frontage. Entrances are covered with semi-circular projecting hoods supported by knee brace brackets. Entrances contain multi-light doors.

091 C 1010 Gloster Street

One-story, four-bay, brick veneered bungalow with Craftsman influence, built ca. 1925-30. Complex gable roof with jerkinhead and exposed rafter tails, covered with asphalt shingles. Windows are 9/1 DHSL, in triplets. Side one-bay cutaway porch supported by brick piers spanned by a semi-circular arch. Entrance set in semi-circular arched vestibule, with a three-light, two-panel replacement door.

United States Department of the Interior
National Park Service

NATIONAL REGISTER OF HISTORIC PLACES
CONTINUATION SHEET

Midtown Corinth Historic District

Section number 7 Page # 25 Corinth, Alcorn County, MS

=====

- 092 C 1012 Gloster Street
One-story, four-bay, frame bungalow with Craftsman influence, built ca. 1915-20. Gable-front roof with exposed rafter tails and knee brace brackets, covered with asphalt shingles. Exterior walls have weatherboard siding above a wainscot of brick veneer. Windows are 4/1 and 2/1 DHSL, some in triplets. L-plan partial cutaway porch with side-gable roof supported by wrought iron replacement posts. Entrance contains a single-light replacement door.
- 093 C 1015 Gloster Street
One-story, three-bay, frame bungalow with Craftsman influence, built ca. 1915-20. Complex gable roof with plain projecting eaves, covered with asphalt shingles. Exterior walls have weatherboard siding. Windows are 1/1 DHSL, some in pairs. L-plan, side-gable porch supported by wrought iron replacement posts on raised brick bases. Entrance contains a Craftsman multi-light door.
- 094 C 1016 Gloster Street
One-story, three-bay, frame and brick veneered bungalow with Craftsman influence, built ca. 1915-20. Complex gable-front roof with exposed rafter tails, knee brace brackets, covered with asphalt shingles. Exterior walls have weatherboard siding above a wainscot of brick veneer. Windows are 1/1, 6/1 and 9/1 DHSL, some in triplets. L-plan, side gable-roofed porch supported by wrought iron replacement posts. Entrance contains a solid replacement door.
- 095 C 1100 Gloster Street
One-story, three-bay, frame bungalow with Craftsman influence, built ca. 1915-20. Gable-front roof with siding covered rafter tails, covered with asphalt shingles. Exterior walls have vinyl siding. Windows are 4/1 DHSL, in pairs. Full-width, cutaway porch supported by battered boxed piers. Entrance contains a Craftsman multi-light door.

Garage, ca. 1950-55. One-story, one-bay, frame, gable roof, weatherboard siding. (NC)
- 096 NC 1101 Gloster Street (St. James Catholic Church)
One-story, three-bay, brick veneered church structure with Colonial Revival influence, built 1949. Gable front roof with flush eaves and silhouette belfry, covered with asphalt shingles. Windows are semi-circular arched, 1/1 multi-light stained glass windows. Entrance contains

United States Department of the Interior
National Park Service

NATIONAL REGISTER OF HISTORIC PLACES
CONTINUATION SHEET

Midtown Corinth Historic District

Section number 7 Page # 26 Corinth, Alcorn County, MS

=====

096 1101 Gloster Street, continued:

double-leafed, single-light replacement doors set within semi-circular arched molded ashlar surround. Side "free-standing" addition built ca. 1965-70, attached at rear of main sanctuary.

097 NC 1102 Gloster Street

One-story, three-bay, frame center hall cottage with Neo-Colonial Revival influence, built ca. 1990. Gable-front roof with boxed cornice, covered with asphalt shingles. Exterior walls have weatherboard siding. Windows are single-light fixed sashes with semi-circular arched transoms. Entrance is a one-panel, one-light double-door.

Garage, ca. 1990. One-story, two-bay, frame, gable roof, weatherboard siding, six-panel door. (NC)

098 C 705 Jackson Street (Veranda House; Curlee House)

One-story, three bay, post and timber frame center hall house with Greek Revival influence, built in 1860. Low hip roof behind wooden paneled parapet with a boxed cornice and full entablature, covered with terne metal roofing. Exterior walls covered with stucco over lath. Windows are double-leaf, three-light casement. U-shaped cutaway porch supported by eight boxed columns on raised pedestal bases. Entrance in antis contains a five-panel door, surrounded by sidelights and a transom. Individually listed NR 8/22/75; included in Siege and Battle of Corinth NHL, NR 5/9/91.

a. Carriage Shed(?), ca. 1860. One-story, three-bays, load-bearing brick, flat roof, replacement doors. (C)

See also 713 Jackson Street (a.k.a. 301 Childs).

099 C 713 Jackson Street (a.k.a. 301 Childs St)

One-story, three-bay, post and timber frame center hall cottage with Greek Revival influence, built ca. 1860 in association with 705 Jackson Street. Low hip roof with boxed cornice, covered with sheet metal shingle roofing. Exterior wall surfaces have weatherboard siding. Windows are 2/2 DHSL. One-bay, replacement gable-roofed porch supported by boxed columns. Entrance contains a 2-light, 2-panel Cottage door surrounded by divided transom and 1/2 length sidelights. Believed to be former detached kitchen associated with 705 Jackson Street, as indicated by Sanborn maps.

United States Department of the Interior
National Park Service

NATIONAL REGISTER OF HISTORIC PLACES
CONTINUATION SHEET

Midtown Corinth Historic District

Section number 7 Page # 27 Corinth, Alcorn County, MS

=====

- 100 C 714 Jackson Street (Sekels Home)
Two-story, four-bay, load-bearing brick modified cubicle house with Italianate influence, built ca. 1875-80. Hip roof with molded boxed cornice and dentilled frieze, covered withterne metal roofing. Brick "quoins" at corners. Windows are 4/4 DHSL. Replacement entrance surround features a closed pediment supported by engaged, fluted Doric pilasters; with a four-panel door surrounded by transom and sidelights.
- 101 C 810 Jackson Street
One-story, three-bay, raked brick veneered center hall cottage with Colonial Revival influence, built ca. 1925-30. Side gable roof with jerkinheads and boxed cornice, covered with asphalt shingles. Windows are 6/1 DHSL. Gable-front portico with full entablature and elliptical vaulted ceiling, supported by paired columns with Tuscan shafts and Doric capitals. Entrance contains a six-panel door.
- 102 C 811 Jackson Street
Two-story, three-bay, frame center hall house with Colonial Revival influence, built 1920-24. Side gable roof with boxed cornice and frieze, covered with asphalt shingles. Exterior walls covered with beveled siding. Windows are 6/6 and 9/9 DHSL, some in triplets. Side flat-roofed porch and side, flat-roofed porte-cochere, with Doric columns. Gable-front porch with elliptical vaulted ceiling, cornice returns, with Doric capitals. Entrance has six-panel door with multi-light transom and sidelights.

Garage, ca. 1920-25. One-story, two-bay, frame, gable roof, weatherboard siding, four-light four-panel bi-fold doors. (C)
- 103 C 815 Jackson Street
One-story, three-bay, frame L-plan house with Italianate influence, built ca. 1880-85. Gable roof with molded boxed cornice with cornice returns, covered with asphalt shingles. Exterior walls have weatherboard siding. Windows are 2/1 DHSL. Partial-width, hip and gable porch supported by boxed columns with billet molding. Entrance contains an arched single-light, two-panel door flanked by multi-light sidelights.

Storage Shed, ca. 1900-10. One-story, frame, two-bay, side-gable roof, weatherboard siding, solid replacement doors. (C)

United States Department of the Interior
National Park Service

NATIONAL REGISTER OF HISTORIC PLACES
CONTINUATION SHEET

Section number 7 Page # 28 Midtown Corinth Historic District
Corinth, Alcorn County, MS

=====

104 C 821 Jackson Street

One-story, three-bay, brick veneered center hall plan cottage with Colonial Revival influence, built ca. 1880-85; porch altered ca. 1913-24. Side gable roof with flush eaves, covered with asphalt shingles. Windows are 5/1 DHSL. Partial width porch covered with shed roof supported by boxed columns; block spindle balustrade. Entrance contains an eight-panel door.

Garage, ca. 1910-15. One-story, one-bay, load-bearing brick, flat roof with semi-circular front parapet, double 6-light, three-panel doors. (C)

105 C 822 Jackson Street

One-story, three-bay, brick veneered center hall cottage with Craftsman influence, built ca. 1915-20. Hip roof with box cornice and frieze, covered with asphalt shingles. Windows are 12/1 DHSL. Partial-width porch covered with hip roof supported by brick piers; closed brick balustrade. Entrance contains a Craftsman multi-light door surrounded by multi-light transom and sidelights.

106 C 823 Jackson Street

One-story, three-bay, brick veneered bungalow with Craftsman influence, built ca. 1920-21. Complex gable roof with exposed rafter tails, knee brace brackets, covered with asphalt shingles. Windows are 5/5 DHSL. Partial-width cutaway porch supported by corbeled brick piers; block spindle replacement balustrade. Entrance contains a Craftsman multi-light door surrounded with Craftsman multi-light transom and sidelights.

Garage, ca. 1920-21. One-story, two-bay, load-bearing brick, gable roof, replacement overhead doors. (C)

107 C 824 Jackson Street

One and one-half story, four-bay, brick veneered bungalow with Craftsman influence, built ca. 1904-09. Complex hip and gable-front roof with boxed cornice, covered with asphalt shingles. Gable end is stuccoed and half-timbered, containing two, 5/5 DHSL. Windows are 5/5 DHSL. Partial-width, cutaway porch supported by metal replacement columns; closed brick balustrade. Entrance contains a Craftsman multi-light door surrounded by a multi-light transom and sidelights.

Garage, ca. 1910-15. One-story, one-bay, load-bearing brick, gable-front roof with jerkinhead, stucco and half timbering in gable end, replacement overhead doors. (C)

United States Department of the Interior
National Park Service

NATIONAL REGISTER OF HISTORIC PLACES
CONTINUATION SHEET

Midtown Corinth Historic District
Corinth, Alcorn County, MS

Section number 7

Page # 29

108 C 1001 Jackson Street

One-story, three-bay, frame L-plan cottage with Queen Anne influence, built ca. 1895-1900. Gable roofs with boxed cornice, covered with asphalt shingles. Exterior walls have weatherboard siding. Windows are 2/2 DHSL. Partial-width, shed-roofed porch supported by turned posts with block spindle balustrade. Entrance is a six-panel replacement door, surrounded by multi-light transom and sidelights.

109 C 1002 Jackson Street

Two-story, three-bay, center hall side-gable townhouse with Colonial Revival influence, built ca. 1920-25. Side gable roof with flush eaves and frieze with running dentil mold, covered with asphalt shingles. Windows are 6/6 DHSL. Partial-width, flat-roofed tetrastyle portico supported by boxed, paneled piers. Entrance contains a six-panel door topped by a two-light transom.

110 C 1007 Jackson Street

One-story, three-bay, frame L-plan cottage with Queen Anne influence, built ca. 1895-1900. Gable roofs with boxed cornice, covered with asphalt shingles. Exterior walls have weatherboard siding. Windows are 2/2 DHSL. Partial-width, shed-roofed porch supported by turned posts with block spindle balustrade. Entrance is a single-light, two-panel door, surrounded by transom and sidelights.

Storage shed (former privy?), ca. 1900-05. One-story, two-bay, frame, gable roof, board and batten siding, five-panel doors. (C)

111 C 1009 Jackson Street

One-story, five-bay, stucco and brick veneered bungalow with Craftsman influence, built ca. 1920-25. Complex hip and gable roofs with boxed cornice, covered with asphalt shingles. Exterior walls are stucco veneered above a wainscot of brick. Windows are 6/1 DHSL. Enclosed front side porch with jalousied windows. Front side flat-roofed porch addition, supported by wrought iron posts. Entrance contains an elliptical-arched surround with an elliptical, multi-light door.

Garage, ca. 1920-25. One-story, one-bay, frame, gable roof, stucco veneer. (C)

United States Department of the Interior
National Park Service

NATIONAL REGISTER OF HISTORIC PLACES
CONTINUATION SHEET

Section number 7 Page # 30 Midtown Corinth Historic District
Corinth, Alcorn County, MS

=====

- 112 C 1011 Jackson Street
One-story, five-bay, brick and stone veneered English cottage with Tudor Revival influence, built ca. 1920-25. Complex hip and gable roof with exposed rafter tails and fascia, covered with a pantile roof. Exterior walls feature details of rubble-stone. Windows are diaper-pattern/1 DHSL. Partial width, gable-front side porch supported by brick piers with Tudor arch. Entrance set in gable-front vestibule with Tudor arch, containing a Tudor vertical board, multi-light door.
- 113 C 1013 Jackson Street
One-story, five-bay, brick and stone veneered English cottage with Tudor Revival influence, built ca. 1920-25. Complex hip and gable roof with exposed rafter tails and fascia, covered with a pantile roof. Exterior walls feature a wainscot of rubble-stone. Windows are diaper-pattern/1 DHSL. Partial width, gable-front side porch supported by brick piers with Tudor arch. Entrance set in gable-front vestibule with Tudor arch, containing a Tudor vertical board, multi-light door.
- 114 C 504 Kilpatrick Street
One-story, three-bay, brick veneered bungalow with Craftsman influence, built ca. 1925-30. Gable-front roof with exposed rafter tails, covered with asphalt shingles. Windows are 1/1 DHSL. Full-width, gable-roofed porch supported by battered boxed piers on brick bases; closed brick balustrade. Entrance contains a Craftsman multi-light door.
- 115 C 506 Kilpatrick Street
One-story, five-bay, stuccoed concrete block center hall plan cottage with Art Moderne influence, built ca. 1935-40. Flat roof with corbeled band coping, covered with built-up asphalt roofing. Windows are 8/8 metal frame casements. Cantilevered flat-roofed hood projects over entrance. Entrance contains an oval-light replacement door.
- 116 C 604 Kilpatrick Street
One and one-half story, three-bay, frame bungalow with Craftsman influence, built ca. 1915-20. Side gable roof with exposed rafter tails, covered with asphalt shingles. Gable-front dormer contains three, nine-light casements. Exterior walls have weatherboard siding. Windows are 1/1 and 6/3 DHSL. Full-width porch with flared shed roof supported by brick piers; closed brick balustrade. Porte cochere added c.1960s. Entrance is Craftsman multi-light door and sidelights.

United States Department of the Interior
National Park Service

NATIONAL REGISTER OF HISTORIC PLACES
CONTINUATION SHEET

Midtown Corinth Historic District
Corinth, Alcorn County, MS

Section number 7

Page # 31

117 C 701 Kilpatrick Street

One-story, three-bay, center hall cottage with Colonial Revival influence, built ca. 1880-85. Side gable roof with molded boxed cornice and cornice returns, covered with asphalt shingles. Two gable dormers each contain 6/6 DHS. Exterior walls have weatherboard siding. Windows are 6/6 DHS, some in pairs. Partial width, hip-roofed porch supported by wrought iron replacement posts, with a wrought iron balustrade. Entrance contains a replacement multi-light door with transom and sidelights.

118 C 702 Kilpatrick Street

One-story, three-bay, frame, center hall plan cottage with Colonial Revival influence, built ca. 1880-85. Side gable roof with boxed cornice, covered with asphalt shingles. Exterior wall surfaces covered with weatherboard siding. Windows are 6/6 metal sash replacements, some in pairs. Partial width, shed-roofed porch supported by replacement posts. Entrance contains a single-light door.

Garage, ca. 1915-20. One-story, one-bay, frame, Gable-roof, Masonite siding, built-up tongue and groove doors. (C)

119 NC 707 Kilpatrick Street

One-story, three-bay, brick-veneered center hall cottage with Neo-Traditional influence, built ca. 1965-70. Side-gable roof with boxed cornice, covered with asphalt shingles. Windows are 1/1 DHS. Partial width, enclosed cutaway porch supported by brick piers, with a closed brick balustrade. Entrance contains a solid, single-light door flanked by single-light sidelights.

120 C 708 Kilpatrick Street (Fish Pond House)

One-story, five-bay, post and timber frame center hall cottage with Greek Revival influence, built 1857. Low hip roof with boxed cornice and full entablature, covered with asphalt shingles. Entablature decorated with a "bullet"-like trim motif, added perhaps ca. 1925-30. Exterior walls have weatherboard siding. Windows are 9/1 DHS. Partial width, pedimented portico supported by paneled boxed columns, rebuilt ca. 1925. Entrance has single-light, two-panel, double-leaf doors. Listed as part of Siege and Battle of Corinth NHL, NR 5/9/91.

United States Department of the Interior
National Park Service

NATIONAL REGISTER OF HISTORIC PLACES
CONTINUATION SHEET

Midtown Corinth Historic District

Section number 7 Page # 32 Corinth, Alcorn County, MS

=====

121 NC 709 Kilpatrick Street

One-story, five-bay, brick veneered ranch house with Minimalist Traditional influence, built ca. 1960-65. Complex hip and gable roof with boxed cornice, covered with asphalt shingles. Windows are multi-light casements. One-bay porch covered with shed roof supported by wrought iron posts. Entrance contains a three-light solid door.

122 C 716 Kilpatrick Street

One and one-half story, four-bay, frame bungalow with Craftsman and Colonial Revival influence, built ca. 1915-20. Side gable roof with boxed cornice, covered with asphalt shingles. Gable-front dormer contains 4/1 and 3/1 DHSL. Exterior wall surfaces have asbestos siding. Windows are 4/1 and 3/1 DHSL, some in triplets. L-plan cutaway porch supported by cylindrical columns. Entrance contains a Craftsman multi-light door with Craftsman multi-light sidelights.

Garage apartment, ca. 1915-20. One and one-half story, three-bay, frame, gable roof, weatherboard siding, carport addition with gable roof. (C)

123 C 904 Kilpatrick Street

One-story, four-bay, frame double-shotgun with Craftsman influence, built ca. 1915-20. Gable-front roof with exposed rafter tails, knee brace brackets, covered with asphalt shingles. Exterior walls have Masonite siding. Windows are 1/1 DHSL, in pairs. Full-width, hip and gable-roofed porch supported by brick piers with a closed wood paneled balustrade. Entrance contains a single-light door. Two side shed carports added ca. 1970-75.

124 C 906 Kilpatrick Street

One-story, three-bay, brick veneered bungalow with Craftsman influence, built ca. 1915-20. Complex gable roof with exposed rafter tails and fascia board, covered with asphalt shingles. Windows are 6/1 DHSL. Full-width cutaway porch with center gablet and side shed-roofed porte cochere, supported by battered boxed piers on brick bases; closed brick balustrade. Entrance contains a three-light, three-panel door.

Garage, ca. 1915-20. One-story, one-bay, brick veneered, gable roof, overhead replacement door. (C)

United States Department of the Interior
National Park Service

NATIONAL REGISTER OF HISTORIC PLACES
CONTINUATION SHEET

Section number 7 Page # 33 Midtown Corinth Historic District
Corinth, Alcorn County, MS

=====

- 125 C 908 Kilpatrick Street
One-story, three-bay, frame modified shotgun with Craftsman influence, built ca. 1925-30. Gable-front roof with exposed rafter tails, covered with asphalt shingles. Exterior walls have asbestos siding. Windows are 1/1 DHSL, some in pairs. Partial-width, gable-front porch supported by wrought iron replacement posts. Entrance contains a six-panel replacement door.
- 126 NC 1006 Kilpatrick Street
One-story, three-bay, load-bearing cinder block masonry modified shotgun with Minimalist Traditional influence, built ca. 1950-55. Gable-front roof with boxed cornice, covered with asphalt shingles. Windows are 3/1 DHSL. Partial-width, gable-front porch supported by wrought iron posts. Entrance contains a single-light solid replacement door.
- 127 C 105 East Linden Street
One-story, three-bay, frame modified bungalow with Queen Anne influence, built ca. 1885-90. Complex gable roof with plain projecting eaves, covered with asphalt shingles. Exterior walls have weatherboard siding. Windows are 1/1 DHSL, in pairs. L-plan, hip-roofed porch supported by turned posts with scroll sawn brackets. Entrance contains a single-light, three-panel door.

Garage, ca. 1920-25. One-story, two-bay, frame, gable roof, weatherboard siding. (C)
- 128 NC 107-109 East Linden Street
One-story, six-bay duplex ranch with Minimalist Traditional influence, built ca. 1955-60. Side gable roof with boxed cornice, covered with asphalt shingles. Windows are 2/2 metal sash lights, in pairs. Each entrance covered with shed-roofed hood. Entrance contains a six-panel door.
- 129 NC 111-113 East Linden Street
One-story, four-bay, brick veneered duplex ranch with Minimalist Traditional influence, built ca. 1955-60. Side gable roof with boxed cornice, covered with asphalt shingles. Windows are 2/2 metal sash lights, some in pairs. One-bay, partial cutaway porch covered with roof extension, supported by boxed columns. Entrance contains a six-panel door.

United States Department of the Interior
National Park Service

NATIONAL REGISTER OF HISTORIC PLACES
CONTINUATION SHEET

Section number 7 Page # 34 Midtown Corinth Historic District
Corinth, Alcorn County, MS

=====

130 C 204 East Linden Street

One-story, three-bay, brick veneered bungalow with Craftsman influence, built ca. 1915-20. Complex gable-front roofs with exposed rafter tails, covered with asphalt shingles. Windows are 3/1 DHSL, some in triplets. Full-width, gable-front porch supported by replacement boxed columns on brick bases; closed brick balustrade. Entrance contains a Craftsman multi-light door flanked by sidelights.

131 C 205 East Linden Street

Two-story, three-bay, brick veneered center hall house with Federal Revival influence, built ca. 1920-25. Side gable roof with boxed cornice and frieze, covered with asphalt shingles. Windows are 9/1 DHSL, some in pairs. Front, one-bay, flat-roofed porch with block spindle balustrade supported by paired columns with Tuscan shafts and Doric capitals; side sun porch glassed ca. 1960-65. Entrance contains a six-panel door flanked with multi-light sidelights, topped with an elliptical fan light.

132 C 206 East Linden Street

One-story, four-bay, frame telescopic Cape with Colonial Revival influence, built ca. 1930-35. Complex gable roof with boxed cornice, covered with asphalt shingles. Exterior walls have beveled siding. Windows are 6/1 DHSL. One-bay, gable-roofed porch with elliptical ceiling vault, supported by columns with Tuscan shafts with Doric capitals. Entrance contains an eight-panel door, topped with an elliptical transom and flanked by multi-light sidelights.

133 C 207 East Linden Street

Two and one-half story, three-bay, brick veneered Tudor house with Tudor Revival influence, built ca. 1925-30. Gable-front roof with flush eaves, covered with asphalt shingles. Gable ends are stuccoed and half-timbered. Windows are eight-light-fixed, and paired, eight-light casements. Entrance covered with shed-roofed hood which extends over a side bay window; the door is a six-panel replacement.

Garage, ca. 1925-30. One and one-half story, three-bay, brick veneer, gable roof, hip dormer, 4/4 DHSL, solid replacement door. (C)

United States Department of the Interior
National Park Service

NATIONAL REGISTER OF HISTORIC PLACES
CONTINUATION SHEET

Midtown Corinth Historic District

Section number 7 Page # 35 Corinth, Alcorn County, MS

=====

- 134 C 208 East Linden Street
One-story, three-bay, stucco-veneered cottage with Art Moderne influence, built ca. 1930-35. Flat roof behind parapet wall capped with a tile coping. Windows are doubled and tripled single-light casements. Entrance contains a louvered security door; the inside door is not visible.
- 135 C 210 East Linden Street
One-story, three-bay, brick veneered bungalow with Craftsman influence, built ca. 1915-20. Side gable roof with exposed rafter tails and knee brace brackets, covered with asphalt shingles. Exterior walls have terra cotta lintels, water table and decorative medallions. Windows are 4/1 DHSL. Partial-width gable-roofed porch with side gable porte-cochere supported by brick piers; closed brick balustrade. Entrance features a multi-light door flanked by multi-light sidelights.

Garage, ca. 1915-20. One-story, one-bay, load-bearing brick, gable roof, knee brace brackets, no door. (C)
- 136 NC 302 East Linden Street
One and one-half story, four-bay, center hall plan duplex cottage with Colonial Revival influence, built ca. 1947. Side gable roof with boxed cornice, covered with asphalt shingles. Two shed-roofed dormers each contain two eight-light casement windows. Windows are multi-light metal-sash casement lights. Partial width, shed-roofed porch supported by boxed columns. Entrances contain six-panel doors.
- 137 C 516 East Linden Street (A.H. Patrick House)
One-story, three-bay, frame composite cottage with Colonial Revival influence, built ca. 1904-13. Complex hip and gable roof with molded boxed cornice, covered with asphalt shingles. Hip-roofed dormer contains paired Queen Anne multi-light/1 DHSL. Exterior walls have weatherboard siding. Windows are 1/1 DHSL. L-plan, hip-roofed porch supported by box columns. Entrance contains a single-light door, surrounded by single-light transom and sidelights.
- 138 C 616 East Linden Street
One-story, three-bay, frame L-plan cottage with Colonial Revival influence, built ca. 1894-99. Gable roof

United States Department of the Interior
National Park Service

NATIONAL REGISTER OF HISTORIC PLACES
CONTINUATION SHEET

Midtown Corinth Historic District

Section number 7 Page # 36 Corinth, Alcorn County, MS

=====

- 138 616 East Linden Street, continued:
- with plain projecting eaves, covered with asphalt shingles. Exterior wall surfaces covered with Masonite siding. Windows are 2/2 DHSL, some in pairs. Partial-width, shed-roofed porch supported by boxed columns; replacement block spindle balustrade. Entrance contains a nine-light, two-panel replacement door.
- 139 NC 800 East Linden Street
One-story, five bay, brick-veneered ranch house with Minimal Traditional influence, built ca. 1965-70. Side gable roof with boxed cornice, covered with asphalt shingles. Windows are 4/4 metal sash lights. Entrance contained in a cutaway vestibule, with an eight panel door.
- 140 NC 804 East Linden Street
One-story, four-bay, brick veneered duplex ranch house with Minimalist Traditional influence, built ca. 1965-70. Side gable roof with boxed cornice, covered with asphalt shingles. Windows are 6/6 DHSL. Partial-width, shed-roofed front and side porches, supported by boxed piers. Entrance contains a four-light, four-panel door.
- 141 C 906 East Linden Street
One-story, four-bay, brick veneered bungalow duplex with Craftsman influence, built ca. 1925-30. Complex gable roof with exposed rafter tails, covered with asphalt shingles. Windows are 4/1 DHSL. L-plan cutaway porches supported by brick piers; closed brick balustrades. Entrances contain multi-light doors.
- Garage, ca. 1925-30. One-story, one-bay, frame, gable roof, weatherboard siding. (C)
- 142 C 908 East Linden Street
One-story, four-bay, brick veneered bungalow with Craftsman influence, built ca. 1920-24. Gable-front roof with exposed rafter tails, covered with asphalt shingles. Windows are 4/1 DHSL. Full-width, hip and gable-roofed porch supported by wrought iron replacement posts. Entrances contain Craftsman multi-light doors.

United States Department of the Interior
National Park Service

NATIONAL REGISTER OF HISTORIC PLACES
CONTINUATION SHEET

Section number 7 Page # 37 Midtown Corinth Historic District
Corinth, Alcorn County, MS

=====

- 143 C 1012 East Linden Street
One-story, three-bay, frame modified double shotgun with Craftsman influence, built ca. 1915-20. Gable-front roof with exposed rafter tails, covered with asphalt shingles. Exterior wall surfaces covered with novelty siding. Windows are 3/1 DHSL, in pairs. Partial-width, gable-front porch supported by simple posts. Entrance contains a six-light, three-panel door.
- 144 C 1014 East Linden Street
One-story, three-bay, frame center hall cottage with Craftsman influence, built ca. 1915-20. Side gable roof with exposed rafter tails, covered with asphalt shingles. Gable roofed dormer contains three 1/1 DHSL. Exterior walls have weatherboard siding. Windows are 1/1 DHSL. Full-width, shed-roofed porch supported by wrought iron replacement posts. Entrance contains a three-light replacement door.

Garage, ca. 1950-55. One-story, one-bay, frame, shed roof, weatherboard siding. (NC)
- 145 NC 1016 East Linden Street
One and one-half story, three-bay, frame cottage with Colonial Revival and Neo-Tudor Revival influences, built 1990. Complex gable roof with flush eaves, covered with asphalt shingles. Cutaway porch in gable dormer, half-timbered gable end; gable dormer contains 6/6 DHSL. Exterior walls have Masonite siding. Windows are 6/6 DHSL. Entrance is a six-panel door flanked by sidelights.
- 146 C 1020 East Linden Street
One and one-half story, three-bay, L-plan cottage with Minimalist Traditional influence, built ca. 1930-35. Complex gable roof with flush eaves, covered with asphalt shingles. Gable-roofed wall dormer contains a 6/6 DHSL. Exterior wall surfaces covered with asbestos shingles. Windows are 6/6 DHSL. Partial-width flat-roofed porch supported by boxed columns. Entrance contains a six-panel door.

Garage, ca. 1930-35. One-story, one-bay, frame, gable roof, asbestos siding, overhead doors. (C)

United States Department of the Interior
National Park Service

NATIONAL REGISTER OF HISTORIC PLACES
CONTINUATION SHEET

Midtown Corinth Historic District

Section number 7 Page # 38 Corinth, Alcorn County, MS

=====

147 C 1022 East Linden Street

One-story, four-bay, frame center hall cottage with Colonial Revival influence, built ca. 1930-35. Side gable roof with flush eaves, covered with asphalt shingles. Exterior walls have weatherboard siding. Windows are 6/6 DHSL. Partial-width, flat-roofed porch supported by wrought iron replacement posts. Entrance contains a six-panel door.

Garage, ca. 1970-75. One-story, one-bay, frame, gable, exterior plywood siding, overhead door. (NC)

148 C 304 North Madison Street (Kimmonwych)

Two-story, three-bay, frame, homestead house with Queen Anne influence, built 1892. Complex gable roof with boxed cornice and plain eaves, covered with asphalt shingles. Decorative features are gable ornaments, fish scale shingles in gable ends, and sawn brackets. Exterior walls have weatherboard siding. Windows are 1/1 DHSL; two bay windows. Partial-width, shed-roofed porch supported by turned posts, with turned balustrade and frieze. Entrance is multi-light stained glass light/one-panel.

Storage Shed, ca. 1915-20. One-story, one-bay, frame, open center bay, side gable roof, shiplap siding, 4-light casement windows. (C)

149 C 401 North Madison Street

Two-story, five-bay, brick veneered commercial block with Federal Revival influence, built ca. 1925-30. Flat roof behind parapet wall with cast stone cornice, covered with built-up asphalt roofing. Windows are 6/6 DH metal sashes, with flat brick arches and keystones. Center entrance features an open pediment with cornice returns, supported by Doric pilasters. Recessed entry with semi-circular arched fanlight contains a four-light, two-panel door.

150 C 404 North Madison Street

Two-story, three-bay, frame, homestead house with Colonial Revival influence, built ca. 1860, moved 1892 and enlarged ca. 1904-09. Complex gable and hip roof with boxed cornice, covered with asphalt shingles. Exterior walls have asbestos siding; most lost, exposing original weatherboard siding. Windows are 1/1 DHSL; with side bay

United States Department of the Interior
National Park Service

NATIONAL REGISTER OF HISTORIC PLACES
CONTINUATION SHEET

Section number 7 Page # 39 Midtown Corinth Historic District
Corinth, Alcorn County, MS

=====

150 404 North Madison Street, continued:

window. Full-width, hip-roofed porch supported by columns with Tuscan shafts and Doric capitals, on wooden pedestal bases. Entrance is a single-light door.

151 NC 500 North Madison Street (U.S. Post Office)

One-story, six-bay, reinforced concrete frame post office building with Post Modernist influence, built 1990. Flat roof behind parapet wall. Exterior walls have spilt-face cast block finish. Projecting center gable parapet over entrance, containing distyle in antis vestibule flanked by exaggerated columns with fluted shafts and Doric capitals. Entrance contains double-leaf single-light doors flanked by transom and sidelights, set within fifteen-light flanking bays.

152 C 515 North Madison Street

One-story, three-bay, frame bungalow with Craftsman influence, built ca. 1915-20. Gable roof with exposed rafter tails, covered with asphalt shingles. Exterior walls have weatherboard siding. Windows are 4/1 DHSL, some in threes. L-plan, gable roof porch and porte cochere, supported by battered boxed piers with brick bases; closed paneled balustrade. Entrance contains a Craftsman multi-light door with a four-light transom.

153 C 612 North Madison Street

One-story, three-bay, frame, center hall cottage with Colonial Revival influence, built ca. 1900-04. Side gable roof with molded boxed cornice, frieze and cornice returns, covered with asphalt shingles. Exterior walls have weatherboard siding. Windows are 1/1 DHSL, some in pairs. Full-width hip-roofed porch and porte cochere supported by boxed columns. Entrance contains a three-light replacement door.

154 C 616 North Madison Street

Two-story, two-bay, brick-veneered four square with Colonial Revival influence, built ca. 1915-20. Hip roof with boxed cornice, covered with asphalt shingles. Windows are 1/1 DHSL, set in segmental-arched reveals on the first floor. Full-width hip-roofed porch supported by columns with Tuscan shafts and Doric capitals, in pairs; closed brick balustrade. Entrance contains a Craftsman multi-light door.

United States Department of the Interior
National Park Service

NATIONAL REGISTER OF HISTORIC PLACES
CONTINUATION SHEET

Midtown Corinth Historic District

Section number 7 Page # 40 Corinth, Alcorn County, MS

=====

155 C 620 North Madison Street

One-story, three-bay, frame, center hall cottage with Craftsman and Colonial Revival influence, built ca. 1900-04. Side gable roof with exposed rafter tails, covered with asphalt shingles. Exterior walls have weatherboard siding. Windows are 1/1 DHSL. L-plan cutaway porch with front gablet supported by columns with Tuscan shafts and Doric capitals. Entrance features a single-oval light door.

156 C 702 North Madison Street

One-story, four-bay, brick veneered bungalow with Craftsman influence, built ca. 1915-20. Hip roof with boxed cornice, covered with asphalt shingles. Rear hip roofed dormer contains two 1/1 DHSL. Windows are 4/1 DHSL. Partial-width, gable-front porch with jerkinhead, supported by brick piers; closed brick balustrade. Entrance contains a single-light door topped by a single-light transom.

Garage, ca. 1915-20. One-story, one-bay, frame, gable roof, weatherboard siding. (C)

157 C 715 North Madison Street (New Hope)

Two-story, three-bay, post and timber frame center hall I-house with transitional Italianate and Greek Revival influence, built ca. 1875 with rear shed-roofed addition ca. 1890-1900. Gable roof with boxed cornice, full entablature and regularly-spaced brackets, covered with asphalt shingles. Exterior walls have weatherboard siding. Windows are 6/6 replacement DHSL. Tetrastyle pedimented portico with cantilevered balcony, supported by boxed columns with repaired bases. Entrance is a six-panel door.

a. Garage, c.1960. One-story, one-bay, frame, gable, weatherboard. (NC)

b. Garden House, ca. 1970. One-story, one-bay, frame, gable. (NC)

c. Play House, ca. 1970. One-story, three-bay, frame, gable. (NC)

158 NC* 810 North Madison Street

Two-story, three-bay, frame center hall house with Colonial Revival influence, built ca. 1925-30. Gable-front roof with boxed cornice, covered with asphalt shingles.

United States Department of the Interior
National Park Service

NATIONAL REGISTER OF HISTORIC PLACES
CONTINUATION SHEET

Midtown Corinth Historic District

Section number 7 Page # 41 Corinth, Alcorn County, MS

=====

158 810 North Madison Street, continued:

Exterior walls have vinyl siding. Windows are 6/6 DHSL, in pairs. Full-width, hip-roofed porch supported by simple posts, with a block spindle balustrade. Side shed-roofed stair porch added ca. 1970-75. Entrance contains a six-panel replacement door topped by a single-light transom. Abusive alterations could be removed to return integrity to this structure.

159 C 903 North Madison Street

One-story, three-bay, frame center-hall cottage with Craftsman influence, built ca. 1925-30. Side gable with boxed cornice, covered with asphalt shingles. Exterior walls have vinyl siding. Windows are 3/1 DHSL. Partial-width gable-roofed porch supported by battered boxed piers; closed paneled balustrade. Entrance contains a Craftsman multi-light door.

160 C 911 North Madison Street

One-story, three-bay, center hall cottage with Craftsman influence, built ca. 1925-30. Side gable roof with exposed rafter tails, covered with asphalt shingles. Exterior walls have weatherboard siding. Windows are 6/6 DHSL, in pairs. Partial-width, hip-roofed porch supported by battered, paneled, boxed piers. Entrance contains a Craftsman multi-light door.

161 C 914 North Madison Street

One-story, three-bay, frame, bungalow with Craftsman influence, built ca. 1935-40. Side-gable roof with boxed cornice, covered with asphalt shingles. Exterior walls have vinyl siding. Windows are 3/1 DHSL. Partial-width, gable-front porch supported by wrought iron replacement posts. Entrance contains a six-light, one-panel door.

162 C 916 North Madison Street

One-story, three-bay, frame bungalow with Colonial Revival and Craftsman influences, built ca. 1935-40. Gable-front roof with exposed rafter tails, covered with asphalt shingles. Exterior wall surfaces covered with weatherboard siding. Windows are 3/1 DHSL. Partial-width, gable-front porch supported by boxed piers with a paneled balustrade. Entrance contains a three-light, three-panel door.

(8-86)

United States Department of the Interior
National Park Service

NATIONAL REGISTER OF HISTORIC PLACES
CONTINUATION SHEET

Midtown Corinth Historic District

Section number 7 Page # 42 Corinth, Alcorn County, MS

- =====
- 163 C 920 North Madison Street
One-story, five-bay, frame rear L-plan cottage with Colonial Revival influence, built ca. 1935-40. Complex gable roof with boxed cornice and cornice returns, covered with asphalt shingles. Exterior walls have vinyl siding. Windows are 9/1 DHSL. Partial-width gable-front porch supported by replacement posts. Entrance is a six-light, one-panel door.
- 164 C 921 North Madison Street
One-story, three-bay, frame center hall cottage with Craftsman influence, built ca. 1925-30. Side gable roof with exposed rafter tails, covered with asphalt shingles. Exterior walls have weatherboard siding. Windows are 6/1 DHSL. Partial-width, hip-roofed porch supported by battered, paneled, boxed piers. Entrance contains a Craftsman multi-light door.
- 165 C 926 North Madison Street
One-story, four-bay, frame Tudor cottage with Tudor Revival influence, built ca. 1935-40. Complex side-gable roof with jerkinhead and flush eaves, covered with asphalt shingles. Exterior walls have vinyl siding. Windows are 3/1 DHSL, in pairs and triplets, beneath shed-roofed hoods. Entrance is covered with a replacement shed-roofed hood supported by knee brace brackets; above, the cornice features a low eyebrow curve. Entrance contains a multi-panel replacement door.
- 166 C 927 North Madison Street
One-story, three-bay, frame center hall cottage with Colonial Revival influence, built ca. 1925-30. Side gable roof with exposed rafter tails, covered with asphalt shingles. Exterior walls have shiplap siding. Windows are 6/6 DHSL. One-bay, gable-roofed porch supported by columns with Tuscan shafts and Doric capitals on brick bases. Entrance contains a six-panel replacement door.
- 167 C 928 North Madison Street
One-story, three-bay, frame Tudor cottage with Tudor Revival influence, built ca. 1935-40. Side gable with boxed cornice, covered with asphalt shingles. Exterior wall surfaces have weatherboard siding. Windows are 6/1 DHSL, some in pairs. Gable-front projecting vestibule with gable-front hood supported by knee brace brackets; side gable-roofed side porch supported by simple posts with block spindle balustrade. Entrance contains a six-light, one-panel door.

United States Department of the Interior
National Park Service

NATIONAL REGISTER OF HISTORIC PLACES
CONTINUATION SHEET

Midtown Corinth Historic District

Section number 7 Page # 43 Corinth, Alcorn County, MS

=====

- 168 C 929 North Madison Street
One-story, three-bay, frame Tudor cottage with Tudor Revival and Craftsman influences, built ca. 1935-40. Side-gable roof with exposed rafter tails, covered with asphalt shingles. Exterior walls have weatherboard siding. Windows are 3/1 DHSL. Side porch covered with side gable, supported by boxed piers. Entrance covered with a gable-roofed hood, supported by knee brace brackets. Entrance contains a semi-circular arched four-light door.
- 169 C 930 North Madison Street
One-story, three-bay, frame bungalow with Craftsman influence, built ca. 1935-40. Gable-front roof with jerkinhead and exposed rafter tails, covered with asphalt shingles. Exterior walls covered with bevel siding. Windows are 3/1 DHSL. Partial-width, hip-roofed porch supported by wrought iron replacement posts. Entrance contains a solid replacement door.
- 170 C 931 North Madison Street
One-story, three-bay, frame center hall cottage with Craftsman influence, built ca. 1930-35. Side gable roof with exposed rafter tails, covered with asphalt shingles. Exterior walls have weatherboard siding. Windows are 6/6 DHSL; some in pairs. Partial-width, gable-front porch supported by battered boxed piers on brick bases. Entrance contains a Craftsman multi-light door.
- 171 C 933 North Madison Street
One-story, three-bay, frame, central hall cottage with Colonial Revival influence, built ca. 1930-35. Side gable roof with fascia board, covered with asphalt shingles. Exterior wall surfaces covered with vinyl siding. Windows are 6/6 DHSL, some in pairs. Partial-width, shed-roofed porch supported by boxed piers. Entrance contains a six-panel door.

Carport, ca. 1970-75. One-story, one-bay, frame, flat roof. (NC)
- 172 C 936 North Madison Street
One-story, four-bay, frame pyramidal cottage with Colonial Revival influence, built ca. 1915-20. Pyramidal hip roof with boxed cornice, covered with asphalt shingles. Exterior walls have weatherboard siding. Windows are 1/1 DHSL. Full-width cutaway porch supported by columns with Tuscan shafts and Doric capitals. Entrances have solid replacement doors.

United States Department of the Interior
National Park Service

NATIONAL REGISTER OF HISTORIC PLACES
CONTINUATION SHEET

Midtown Corinth Historic District

Section number 7 Page # 44 Corinth, Alcorn County, MS

=====

173 C 204 Main Street

One and one-half story, four-bay, frame Cape with Colonial Revival influence, built ca. 1905-10. Brick veneer added to exterior, ca. 1930-35. Side gable roof with boxed cornice and frieze, covered with asphalt shingles. Two gable-roofed dormers each contain 3/1 DHSL. One-bay, gable-roofed portico with elliptical-arched ceiling, supported by boxed piers. Entrance contains a six-panel door.

Garage, ca. 1920-25. One-story, one-bay, load-bearing brick, gable roof. (C)

174 C 214 Main Street

One and one-half story, three-bay, frame pyramidal cottage with Craftsman influence, built ca. 1905-10. Hip roof with boxed cornice, covered with asphalt shingles. Hip-roofed dormer contains a pair of 2/2 DHSL. Exterior walls covered with asbestos siding. Windows are 6/6 metal sash replacements. Partial-width, hip-roofed porch supported by battered boxed piers on brick bases. Entrance contains a three-light replacement door.

Carport/shed, ca. 1960-65. One-story, one-bay, frame, flat roof, Masonite siding, five-panel door. (NC)

175 C 1101 Phillip Street

One-story, three-bay, frame Cape with Minimalist Traditional influence, built ca. 1925-30. Side gable roof with gablets and boxed cornice, covered with asphalt shingles. Exterior walls have aluminum and weatherboard siding. Windows are 3/1 DHSL and 1/1 metal sash replacement lights. Shed-roofed porch supported by replacement boxed piers. Entrance contains a six-panel replacement door.

176 C 1102 Phillip Street

One-story, four-bay, frame bungalow with Craftsman influence, built ca. 1920-25. Complex gable roof with exposed rafter tails, covered with asphalt shingles. Exterior walls have novelty and asbestos siding. Windows are 3/1 DHSL. Partial-width gable-front porch supported by wrought iron replacement posts. Entrance contains a solid replacement door.

Garage, ca. 1920-25. One-story, one-bay, frame, gable roof, Masonite siding, solid replacement doors. (C)

United States Department of the Interior
National Park Service

NATIONAL REGISTER OF HISTORIC PLACES
CONTINUATION SHEET

Midtown Corinth Historic District

Section number 7 Page # 45 Corinth, Alcorn County, MS

=====

177 C 1107 Phillip Street

One-story, three-bay, frame bungalow with Craftsman influence, built ca. 1915-20. Gable-front roof with exposed rafter tails, covered with asphalt shingles. Exterior walls have weatherboard siding. Windows are 3/1 DHSL. Partial-width, gable-front porch supported by boxed piers. Entrance contains a solid replacement door.

178 C 800 Polk Street (Manse, Cumberland Presbyterian Church)

One-story, three-bay, frame composite cottage with Colonial Revival influence, built ca. 1905-10. Complex hip and gable roof with boxed cornice, covered with asphalt shingles. Shed-roofed dormer contains a single fixed light. Exterior walls have weatherboard siding. Windows are 1/1 DHSL, in pairs. L-plan, hip-roofed porch supported by turned posts with a turned spindle frieze; block spindle balustrade. Entrance contains a single-light, three-panel door.

179 C 810 Polk Street (Duncan House)

One-story, five-bay, post and timber frame, center hall cottage with transitional Greek Revival/Italianate influences, built ca. 1855-60. Gable roofs with boxed cornice, full entablature and regular cornice brackets, covered with asphalt shingles. Gable-front dormer suggests location of original portico. Exterior walls have weatherboard siding. Windows are 1/1 DHSL. Partial-width, hip-roofed porch supported by boxed columns, ca. 1920-24. Six-panel (ca.1920-24) door with transom and sidelights.

Included in Siege and Battle of Corinth NHL, NR 5/9/91.

180 C 811 Polk Street

One-story, five-bay, raked brick veneer bungalow with Craftsman influence, built ca. 1925-30. Complex gable roof with exposed rafter tails, covered with asphalt shingles. Windows are 1/1 DHSL. Partial-width, gable-front porch supported by brick piers; block spindle balustrade. Entrance contains a single-light door.

Garage, ca. 1925-30. One-story, two-bay, frame, gable roof, weatherboard siding. (C)

181 NC 1001 Polk Street

One-story, four-bay, brick veneered ranch house with Colonial Revival influence, built ca. 1965-70. Complex gable roof with boxed cornice, covered with asphalt shingles. Windows are 6/6 DHSL, in pairs; and a multi-light bow-bay window. One-bay cutaway porch contains the entrance with single-light, double-leaf doorway.

United States Department of the Interior
National Park Service

NATIONAL REGISTER OF HISTORIC PLACES
CONTINUATION SHEET

Section number 7 Page # 46 Midtown Corinth Historic District
Corinth, Alcorn County, MS

=====

182 NC 1002 Polk Street

One-story, three-bay, brick veneered ranch house with Colonial Revival influence, built ca. 1965-70. Side-gable roof with boxed cornice, covered with asphalt shingles. Windows are 8/8 metal sashes, and multi-light picture window. Two-bay, cutaway porch contains oval-light replacement door; side two-bay carport contained under side extension of roof.

183 C 1019 Polk Street

One-story, four-bay, brick veneered center hall cottage with Colonial Revival influence, built ca. 1925-30. Side-gable roof with boxed cornice, covered with cast concrete roofing. Windows are 6/1 DHSL. Full-width, flat-roofed porch supported by boxed piers. Entrance contains a six-panel door.

Garage, ca. 1925-30. One-story, two-bay, frame, gable roof, vertical board siding. (C)

184 NC* 1020 Polk Street

One-story, four-bay, brick-veneered bungalow with Craftsman and added Spanish Revival influence, built ca. 1920-25 and altered ca. 1960-65. Side-gable roof with plain projecting eaves, covered with asphalt shingles. Vinyl siding in gable ends. Windows are 3/1 DHSL. Full-width, flat-roofed porch supported by fluted Ionic columns, infilled ca. 1960-65 with molded pattern cast block filler. Door is not visible. Integrity could be returned with removal of cast block filler.

185 C 804 Taylor Street (Hamm Home)

One-story, four-bay, frame composite cottage with Colonial Revival influence, built ca. 1910-13. Complex hip and gable roof with boxed cornice, covered with pressed metal shingles. Hip-roofed dormer contains two 1/1 DHSL. Exterior walls have vinyl siding. Windows are 1/1 DHSL. L-plan, hip-roofed porch supported by columns with Doric capitals and Tuscan shafts; porch glassed with single, fixed lights. Entrance contains a single-light door.

186 C 806 Taylor Street

One and one-half story, three-bay, frame composite cottage with Craftsman influence, built ca. 1915-20. Complex hip and gable roof with boxed cornice, covered with cast concrete roofing. Hip-roofed dormer contains a

United States Department of the Interior
National Park Service

NATIONAL REGISTER OF HISTORIC PLACES
CONTINUATION SHEET

Midtown Corinth Historic District

Section number 7 Page # 47 Corinth, Alcorn County, MS

=====

186 806 Taylor Street, continued:

1/1 DHSL. Exterior walls have aluminum siding. Windows are 1/1 DHSL. L-plan porch covered with hip roof supported by boxed, battered piers on cast stone bases, with a closed paneled balustrade. Entrance contains an oval single-light door, with transom and sidelights.

187 C 815 Taylor Street

One-story, three-bay, frame pyramidal cottage with Colonial Revival influence, built ca. 1915-20. Pyramidal hip roof with boxed cornice, covered with cast concrete roofing. Hip-roofed dormer contains two, fixed single-light sashes. Exterior walls have weatherboard siding. Windows are 1/1 DHSL. One-bay, hip-roofed replacement porch supported by boxed columns, added 1960-65. Entrance contains a single-light door flanked by 3/4 length sidelights.

188 C 816 Taylor Street

One-story, three-bay, frame composite cottage with Colonial Revival and Modernist influences, built ca. 1905-10 and modified ca. 1975-80. Complex hip and gable roof with molded boxed cornice, covered with asphalt shingles. Exterior walls have weatherboard and wood shingle siding. Windows are 1/1 DHSL. L-plan porch modified ca. 1975-80 by removal of original roof and replacement with extension of hip ridge below cornice line, supported by boxed piers. Entrance is a multi-light replacement door.

189 C 905 Taylor Street

One-story, three-bay, frame center hall cottage with Colonial Revival influence, built ca. 1915-20. Hip roof with boxed cornice, covered with asphalt shingles. Exterior walls have Masonite siding. Windows are 1/1 DHSL, in pairs. Full-width, hip-roofed porch supported by boxed piers; closed paneled balustrade. Entrance contains a single-light, three-panel door.

190 C 907 Taylor Street

One-story, three-bay, frame center hall cottage with Colonial Revival influence, built ca. 1915-20. Hip roof with molded boxed cornice, covered with asphalt shingles. Exterior walls have weatherboard siding. Windows are 1/1 DHSL, some in pairs. Partial-width, hip-roofed porch supported by replacement boxed piers; block spindle balustrade. Entrance contains a single-light door.

United States Department of the Interior
National Park Service

NATIONAL REGISTER OF HISTORIC PLACES
CONTINUATION SHEET

Midtown Corinth Historic District

Section number 7 Page # 48 Corinth, Alcorn County, MS

=====

191 NC 908 Taylor Street

One-story, three-bay, load-bearing brick commercial building with Minimalist Traditional and added Neo-Colonial Revival influences, built ca. 1950-55. Flat roof behind parapet wall with tile coping. Windows are multi-light replacement display windows. Side shed carports supported by simple posts added ca. 1980-85. Entrance contains a multi-light, multi-panel replacement door.

192 C 909 Taylor Street

One-story, three-bay, frame bungalow with Craftsman influence, built ca. 1915-20. Gable-front roof with exposed rafter tails, covered with asphalt shingles. Exterior walls have asbestos siding. Windows are 12/1 DHSL. Full-width, gable and shed-roofed porch supported by battered boxed piers on boxed bases; modified block spindle balustrade. Entrance contains a Craftsman multi-light door.

Garage, ca. 1950-55. One-story, one-bay, frame, gable roof, asbestos siding, overhead doors. (NC)

193 C 915 Taylor Street

One-story, three-bay, stucco veneered bungalow with Craftsman influence, built ca. 1915-20. Side gable roof with exposed rafter tails, covered with asphalt shingles. Gable dormer contains a six-light casement sash. Windows are 3/1 DHSL. Full-width, shed-roofed porch supported by rubble ashlar piers. Entrance contains a Craftsman multi-light door flanked by Craftsman multi-light sidelights.

194 NC 917 Taylor Street

One-story, three-bay, frame center hall cottage with Colonial Revival influence, built ca. 1915-20. Side gable roof with boxed cornice, covered with asphalt shingles. Exterior walls have vinyl siding. Windows are 1/1 DHS replacements. Full-width, cutaway porch supported by replacement boxed piers. Entrance contains a single-light, four-panel replacement door.

195 C 918 Taylor Street

One-story, three-bay, frame bungalow with Craftsman influence, built ca. 1904-09. Side-gable roof with exposed

United States Department of the Interior
National Park Service

NATIONAL REGISTER OF HISTORIC PLACES
CONTINUATION SHEET

Midtown Corinth Historic District

Section number 7 Page # 49 Corinth, Alcorn County, MS

=====

195 918 Taylor Street, continued:

rafter tails, covered with asphalt shingles. Gable-roofed dormer with three 3/1 DHSL. Exterior walls have weatherboard siding. Windows are 3/1 DHSL. Full-width, cutaway porch supported by paired columns with Doric capitals on Tuscan shafts. Entrance contains a Craftsman multi-light door surrounded by multi-light transom and sidelights.

Garage Apartment, ca. 1910-15. One-story, seven-bay, frame, gable roof, weatherboard siding; converted from garage to guest house ca. 1970s. (NC)

196 C 924 Taylor Street

One and one-half story, four-bay, frame bungalow with Craftsman influence, built ca. 1915-20. Side gable roof with exposed rafter tails, covered with asphalt shingles. Gable-front dormer contains three 1/1 DHSL. Exterior walls have weatherboard siding. Windows are 1/1 DHSL. L-plan cutaway and side-hip roofed porch, supported by boxed battered piers; closed paneled balustrade. Entrance contains a single-light door.

Garage, ca. 1915-25. One-story, one-bay, frame, gable roof, weatherboard siding, paired four-light, X-panel doors. (C)

197 C 915 Waldron Street

One-story, three-bay, brick veneered bungalow with Craftsman influence, built 1915-20. Side gable roof with exposed rafter tails, covered with asphalt shingles. Two hip-roofed dormers each contain a Craftsman multi-light casement. Windows are 9/1 DHSL. Partial-width, gable-front porch with side-gable porte cochere, supported by brick piers; closed brick balustrade. Entrance contains a multi-light door.

198 C 1102 Waldron Street

One and one-half story, three-bay, frame bungalow with Craftsman influence, built ca. 1915-20. Cross gable roof with exposed rafter tails and knee brace brackets, covered with asphalt shingles. Exterior walls have vinyl siding. Windows are 4/1 and 5/1 DHSL, in triplets. Full-width, gable-front porch supported by battered, paneled boxed piers on brick bases; closed brick balustrade. Entrance contains a Craftsman multi-light door.

United States Department of the Interior
National Park Service

NATIONAL REGISTER OF HISTORIC PLACES
CONTINUATION SHEET

Midtown Corinth Historic District

Section number 7 Page # 50 Corinth, Alcorn County, MS

=====

199 C 1103 Waldron Street

One-story, five-bay, frame modified Y-plan cottage with Queen Anne influence, built ca. 1890-95. Complex gable roof with boxed cornice, covered with asphalt shingles. Exterior walls have weatherboard siding. Windows are 1/1 DHSL. Partial-width, hip-roofed porch supported by turned posts with scroll-sawn brackets; closed brick balustrade added ca. 1960-65. Entrance contains solid replacement door.

200 NC 1104 Waldron Street

One-story, three-bay, brick veneered Tudor cottage with Tudor Revival influence, built ca. 1925-30. Side-gable roof with boxed cornice, covered with asphalt shingles. Gable-roofed dormer contains a nine-light casement. Windows are 6/1 DHSL. Projecting vestibule has semi-circular arched entrance with three-light door. Side front addition built ca. 1960-65.

Garage, ca. 1950-55. One-story, one-bay, frame, gable roof, shiplap siding, overhead door. (NC)

201 NC 1109 Waldron Street

One-story, four-bay, frame bungalow with Craftsman influence, built ca. 1915-20. Side gable roof with exposed rafter tails, covered with asphalt shingles. Shed-roofed dormer contains two six-light casements. Exterior walls have weatherboard siding. Windows are 6/1 DHSL. Partially enclosed porch ca. 1960-65, with cutaway center vestibule supported by engaged boxed pilasters; closed paneled balustrade. Entrance contains a Craftsman multi-light door. Alterations have compromised historic integrity.

202 C 1110 Waldron Street

One-story, three-bay, frame bungalow with Craftsman influence, built ca. 1915-20. Side gable and hip roof with exposed rafter tails and knee brace brackets, covered with asphalt shingles. Exterior walls have weatherboard siding. Windows are 1/1 DHSL, in pairs. Gable-front porch and hip-roofed porte cochere, supported by battered, paneled boxed piers on brick bases. Entrance contains a Craftsman multi-light door, surrounded with Craftsman multi-light sidelights.

Garage, ca. 1925-30. One-story, one-bay, frame, gable roof, weatherboard siding. (C)

United States Department of the Interior
National Park Service

NATIONAL REGISTER OF HISTORIC PLACES
CONTINUATION SHEET

Midtown Corinth Historic District

Section number 7 Page # 51 Corinth, Alcorn County, MS

=====

203 C 1112 Waldron Street

One and one-half story, four-bay brick veneered bungalow with Craftsman influence, built ca. 1915-20. Side-gable roof with exposed rafter tails and knee brace brackets, covered with asphalt shingles. Gable-front dormer contains three 3/1 DHSL. Windows are 3/1 DHSL. Full-width, shed-roofed porch supported by brick piers; closed brick balustrade. Entrance contains a Craftsman multi-light door.

Carport/Shed, ca. 1930-35. One-story, one-bay, frame, gable roof, weatherboard siding. (C)

204 C 1113 Waldron Street

One-story, three-bay, frame center hall cottage with Colonial Revival and Craftsman influence, built ca. 1915-20. Side gable roof with boxed cornice, covered with asphalt shingles. Exterior walls have vinyl siding. Windows are 4/1 DHSL. Partial-width, gable-front porch supported by paired, boxed piers. Entrance contains a three-light, two-panel door.

205 C 1203 Waldron Street (Ijams House)

One-story, five-bay, frame Y-plan cottage with Queen Anne influence, built 1895-1900. Cross gable roofs with plain projecting eaves, covered with asphalt shingles. Exterior walls covered with vinyl siding; gable ends have fish scale shingles. Windows are 2/2 DHSL. Full-width hip and shed roofed porch fills the V of the front wings, supported by turned posts; turned spindle frieze and balustrade. Entrance contains a Queen Anne multi-light, two-panel door.

206 C 1012 Washington Street

One and one-half story, four-bay brick veneered Cape with Colonial Revival influence, built ca. 1920-25. Side gable roof with boxed cornice, covered with asphalt shingles. Windows are 3/1 and 5/1 DHSL. One-bay portico with elliptical-arched ceiling, supported by columns with Doric capitals on Tuscan shafts. Entrance contains a six-panel door with a semi-circular arched fan light transom.

Carport, ca. 1980-85. One-story, two-bay, frame, gable roof, weatherboard siding, single-light fixed window, single-light, two-panel door. (NC)

United States Department of the Interior
National Park Service

NATIONAL REGISTER OF HISTORIC PLACES
CONTINUATION SHEET

Midtown Corinth Historic District

Section number 7 Page # 52 Corinth, Alcorn County, MS

=====

- 207 C 1013 Washington Street
One and one-half story, five-bay, frame bungalow with Craftsman influence, built ca. 1915-20. Side gable roof with boxed cornice, covered with asphalt shingles. Shed-roofed dormer contains three 1/1 DHSL. Exterior walls have weatherboard siding. Windows are 1/1 DHSL. Full-width, shed-roofed porch supported by battered boxed piers. Entrance contains a Craftsman multi-light door.
- 208 C 1015 Washington Street
One and one-half story, five-bay, frame modified Cape with Colonial Revival influence, built ca. 1920-25. Side-gable roof with exposed rafter tails, covered with asphalt shingles. Two gable wall dormers each contain a pair of 6/6 DHSL. Exterior walls have weatherboard siding. Windows are 6/6 DHSL. Entrance contains a six-panel door topped with a single-light transom.
- 209 C 803 Webster Street
One and one-half story, three-bay, frame pyramidal cottage with Craftsman influence, built ca. 1915-20. Pyramidal hip roof with boxed cornice, covered with asphalt shingles. Hip-roofed dormer contains three 1/1 DHSL. Exterior walls have weatherboard siding. Windows are 1/1 DHSL. Full-width, hip-roofed porch supported by boxed piers; closed paneled balustrade of vertical railroad siding. Entrance contains a single-light door.
- 210 C 804 Webster Street (Liddon House)
Two-story, four-bay, ashlar veneered modified four-square with Neo-Classical Revival influence, built ca. 1907. Complex hip-on-hip roof with flared eaves and full entablature, covered with asphalt shingles. Four hip-roofed dormers each with 1/1 DHSL. Exterior walls are regularly-coursed, rough-faced, random-width ashlar. Windows are 1/1 DHSL. Two-story tower on corner. Monumental tetrastyle pedimented portico with fluted columns with Corinthian capitals. Double-leaf, single-light doors. Designed by Benjamin Franklin Liddon.
- Garage/quarters, ca. 1915-20. One and one-half story, two-bay, stucco over frame, truncated hip, three hip-roofed dormers each with pairs of 1/1 DHSL, paired six-light, six-panel doors. (C)

United States Department of the Interior
National Park Service

NATIONAL REGISTER OF HISTORIC PLACES
CONTINUATION SHEET

Midtown Corinth Historic District

Section number 7 Page # 53 Corinth, Alcorn County, MS

=====

211 C 807 Webster Street (Perkins Home)

One-story, three-bay, brick veneered bungalow with Craftsman influence, built ca. 1915-20. Side gable roof with exposed rafter tails, knee-brace brackets, covered with asphalt shingles. Windows are 4/1 DHSL. Full-width, gable-front porch supported by brick piers; closed brick balustrade. Entrance contains a Craftsman multi-light door.

Garage, ca. 1970-75. One-story, one-bay, frame, gable roof, Masonite siding, overhead door. (NC)

212 C 814 Webster Street

One and one-half story, three-bay, frame bungalow with Craftsman influence, built ca. 1910-15. Side-gable roof with exposed rafter tails, Mission step brackets, covered with asphalt shingles. Gable-roofed dormer contains five 9/1 DHSL. Exterior walls have weatherboard siding. Windows are 9/1 DHSL, in pairs and triplets. L-plan, shed-roofed porch supported by boxed, paneled piers; closed, cast stone balustrade. Entrance contains a single-light door surrounded by transom and sidelights.

Carport and shed, ca. 1970-75. One-story, one-bay, frame, gable roof, exterior plywood siding, solid doors. (NC)

213 C 815 Webster Street

One and one-half story, three-bay, frame composite cottage with Craftsman influence, built ca. 1899-04. Complex hip and gable roof with boxed cornice, covered with asphalt shingles. Closed front gable end. Gable dormer contains a two, fixed single lights. Exterior wall surfaces covered with vinyl siding. Windows are 1/1 DHSL, in pairs. L-plan hip-roofed porch supported by boxed, battered piers on boxed bases; closed brick balustrade. Entrance contains a single-light, three-panel door.

214 C 901 Webster Street

One-story, four-bay, brick veneered cottage with Minimalist Traditional influence, built ca. 1925-30. Side gable roof with exposed rafter tails, covered with asphalt shingles. Windows are 6/6 DHSL as singles, pairs and triplets. Cutaway side pocket porch supported by brick piers; closed brick balustrade. Entrance located in projecting, gable-roofed vestibule, containing a two-light, four-panel replacement door.

United States Department of the Interior
National Park Service

NATIONAL REGISTER OF HISTORIC PLACES
CONTINUATION SHEET

Midtown Corinth Historic District

Section number 7 Page # 54 Corinth, Alcorn County, MS

=====
215 C 911 Webster Street

One-story, three-bay, frame center-hall cottage with Colonial Revival and Craftsman influence, built ca. 1904-09. Side gable roof with boxed cornice, covered with asphalt shingles. Exterior walls have vinyl siding. Windows are 6/6 DHSL, in pairs. Full-width, shed-roofed porch supported by battered boxed piers. Side side-gable carport added ca. 1960-65. Entrance contains a four-light, two-panel door.

216 C 912 Webster Street

One-story, three-bay, frame L-plan cottage with Queen Anne influence, built ca. 1904-09. Complex gable roof with boxed cornice, covered with asphalt shingles. Gable end covered with added fish scale shingles. Added gable-roofed dormer contains a 6/6 replacement window with semi-circular fanlight. Exterior walls have vinyl siding. Windows are 1/1 DHSL. Partial width, shed-roofed porch supported by replacement turned posts. Entrance contains a two-light, four-panel replacement door.

Garage, ca. 1920-25. One-story, one-bay, brick veneered, gable roof, hinged double-leaf doors. (C) Shared with 914 Webster Street.

217 C 914 Webster Street

One-story, four-bay, brick veneered modified Tudor cottage with Craftsman and Tudor influences, built ca. 1925-30. Side gable roof with boxed cornice, covered with asphalt shingles. Gable ends are covered with weatherboard. Windows are 6/6 DHSL. Partial-width, gable-roofed porch supported by brick piers; closed brick balustrade. Center entrance vestibule contains a semicircular-arched, six-light door.

Garage. Shared with 912 Webster Street, which see.

218 C 915 Webster Street

One-story, three-bay, frame composite cottage with Colonial Revival influence, built ca. 1909-13. Complex pyramidal hip and gable roof with boxed cornice, covered with asphalt shingles. Gable end is closed. Exterior walls have weatherboard siding. Windows are 1/1 DHSL. Partial-width, hip-roofed porch supported by boxed columns. Entrance contains a two-light, four-panel door, topped by an enclosed, single-light transom.

Carport/storage shed, ca. 1945-50. One-story, one-bay, frame, gable roof, weatherboard siding, boxed piers. (NC)

United States Department of the Interior
National Park Service

NATIONAL REGISTER OF HISTORIC PLACES
CONTINUATION SHEET

Section number 7 Page # 55 Midtown Corinth Historic District
Corinth, Alcorn County, MS

=====

219 C 916 Webster Street

One and one-half story, five-bay, frame saddlebag with added Craftsman influence, built ca. 1899-04. Side-gable roof with exposed rafter tails, covered with asphalt shingles. Shed-roofed dormer contains two 2/2 metal replacement lights. Exterior walls have weatherboard siding. Windows are 1/1 DHSL. Full-width, shed-roofed porch supported by battered boxed piers; closed brick balustrade. Two entrances each containing a Craftsman multi-light door.

220 C 917 Webster Street

One and one-half story, three-bay, center hall cottage with Colonial Revival influence, built ca. 1915-20. Side-gable roof with exposed rafter tails, covered with asphalt shingles. Shed-roofed dormer contains three, 2/2 DHSL. Exterior walls have asbestos siding. Windows are 1/1 DHSL. Full-width, cutaway porch supported by fluted replacement columns with Doric capitals. Entrance contains a multi-light door; sidelights have been enclosed.

221 C 919 Webster Street

One-story, four-bay, frame pyramidal cottage with Craftsman influence, built ca. 1904-09; modified 1915-20. Hip roof with exposed rafter tails, covered with asphalt shingles. Exterior walls have weatherboard siding. Windows are 3/1 DHSL, some in pairs. Partial-width, hip-roofed porch supported by brick piers; closed brick balustrade. Entrance contains a Craftsman single-light, three-panel door topped by a single-light transom.

222 C 920 Webster Street

One-story, three-bay, frame bungalow with Craftsman influence, built ca. 1895-99; altered 1899-1904. Side-gable roof with exposed rafter tails, covered with asphalt shingles. Shed-roofed dormer contains rectangular louvered vents. Exterior walls have weatherboard siding. Windows are 1/1 DHSL. Full-width, shed-roofed porch supported by battered boxed piers on brick bases. Entrance contains a multi-light door.

223 C 921 Webster Street

One-story, four-bay, frame bungalow with Craftsman influence, built ca. 1915-20. Hip-on-hip roof with exposed rafter tails, covered with asphalt shingles. Exterior

United States Department of the Interior
National Park Service

NATIONAL REGISTER OF HISTORIC PLACES
CONTINUATION SHEET

Section number 7 Page # 56 Midtown Corinth Historic District
Corinth, Alcorn County, MS

=====

223 921 Webster Street, continued:

walls have weatherboard siding. Windows are 3/1 DHSL. Partial-width cutaway porch with gable-front over entry, supported by brick piers; closed brick balustrade. Entrance contains a six-light, three-panel door, topped with a single-light transom.

224 C General Streetscape and Landscape Characteristics

The general streetscape and landscape characteristics impart a quality of setting that supports the individual and group characters of buildings within the district. Apart from the general alignment, width and topographic profile of the streets themselves, there are mature trees which form complete canopies over many streets which provide an important character of setting. Varieties of street trees include red oak, pin oak, red maple, red gum, sycamore, tulip poplar, black gum and red gum. Trees of lower height which contribute to the historic setting of the district include varieties of magnolia, holly, and dogwood, among others. Further characteristics of the streetscape include concrete sidewalks installed at the curb or set back from the curb behind a narrow grassy strip. Many of the older sidewalks still feature the names of streets impressed into the concrete at corner intersections. Street names are also posted on low, pre-cast concrete pylons at most intersections. Other characteristics of note include various physical features such as building setbacks, land terrace retaining walls, a few surviving granite curbs, and, in a few cases, the absence of driveways and curb cuts; non-physical features include internal and external viewsheds.

=====

8. Statement of Significance

=====

APPLICABLE NATIONAL REGISTER CRITERIA

AREAS OF SIGNIFICANCE

- A Property is associated with events that have made a significant contribution to the broad patterns of our history.
- B Property is associated with the lives of persons significant in our past.
- X C Property embodies the distinctive characteristics of a type, period, or method of construction or represents the work of a master, or possesses high artistic values, or represents a significant and distinguishable entity whose components lack individual distinction.
- D Property has yielded, or is likely to yield, information important in prehistory or history.

ARCHITECTURE

PERIOD OF SIGNIFICANCE

Ca. 1855 to ca. 1940

CRITERIA CONSIDERATIONS

SIGNIFICANT DATES

1855-1860

Property is:

- X A owned by a religious institution or used for religious purposes
(Inventory Nos. 55, 57, 69, 96 & possibly others)
- X B removed from its original location.
(Inventory No. 179 & possibly others, see Section 8, p. 57)
- C a birthplace or grave
- D a cemetery
- E a reconstructed building, object, or structure
- F a commemorative property
- G less than 50 years of age or achieved significance within the past 50 years.

SIGNIFICANT PERSON

N/A

CULTURAL AFFILIATION

N/A

ARCHITECT/BUILDER

Various, unknown; and
Liddon, Benjamin F.
(1876-1952)

United States Department of the Interior
National Park Service

NATIONAL REGISTER OF HISTORIC PLACES
CONTINUATION SHEET

Midtown Corinth Historic District
Corinth, Alcorn Co., MS

Section number 8 Page # 57

=====

NARRATIVE STATEMENT OF SIGNIFICANCE

The Midtown Corinth Historic District of Corinth, Mississippi is a locally significant residential area that has evolved through time from ca. 1855 to 1941. The period of significance is defined as beginning in 1855 with the establishment of the basic matrix of streets and lots, which have, in turn, shaped the architectural character of the district through time. The historic period concludes with the onset of World War Two, after which was seen a fundamental general change in building design, construction methods and development patterns in the district and throughout Corinth as a whole. The district possesses significance under Criterion C in the area of Architecture for its locally-significant collection of late-nineteenth and early-twentieth century building types and architectural styles, most of which are residential in character and use. The characteristics embodied in the buildings of the district represent design trends and construction techniques common in Mississippi and in America as a whole during the late-nineteenth and early twentieth centuries; these structures resulted from the work of a few known skilled architects and a larger number of unknown designers, builders and construction tradesmen.

Criteria Exceptions A and B apply to elements within this district. Exception A applies to two historic churches, the Fillmore Street Cumberland Presbyterian Church (711 North Fillmore Street), and the Foote Street Church of Christ (903 Foote Street), both of which make important architectural contributions to the overall character of the district. Exception B applies to the Duncan House (810 Polk Street), which, though moved from its original site, still makes important architectural and historical contributions to the district.

The history of the district coincides with the establishment of the Corinth community itself, laid out by Houston Mitchell and Hamilton Mask at the crossing of two proposed rail lines: the Memphis & Charleston Railroad, opened in 1857; and, the Mobile and Ohio Railroad, opened in 1861. The Mitchell and Mask Survey established the community with the name of "Cross City"; the name was subsequently changed to Corinth with its incorporation in 1856 (ACHA, pg. 6-7).

The Mitchell and Mask Survey employed the right-of-way of the Memphis and Charleston Railroad as its baseline in creating a basic grid community plan containing about two hundred and fifty blocks. Most of the area surveyed lies in the central business district of Corinth, a large part of which forms the Downtown Corinth Historic District (NR 1/28/1993). Residential areas grew up concurrently to the north and east of the central business district. The growth of the population to 2,500 by 1860 caused the platting of four additions to the original Mitchell and Mask Survey between 1855 and 1860, namely, Graham's Addition, the Young & McCord Addition, Walker's Addition, and the Bell, Young and McCord Addition.

United States Department of the Interior
National Park Service

NATIONAL REGISTER OF HISTORIC PLACES
CONTINUATION SHEET

Section number 8 Page # 58 Midtown Corinth Historic District
Corinth, Alcorn Co., MS

=====

The additions to the original survey may have provided for street extensions to run beyond the boundaries of the district prior to 1861, but it is clear that the Midtown Historic District represents that portion of Corinth outside of the downtown core that had been developed for residential use in the Antebellum era. This consideration appears confirmed by the fact that the vast majority of surviving antebellum structures in all of Corinth are concentrated in this district. Among these structures are the Curlee House (a.k.a. "Veranda House", 705 Jackson Street), Oak Home (808 North Fillmore Street), the Duncan House (810 Polk Street), the Fish Pond House (708 Kilpatrick Street). All of these structures display various familiar characteristics of vernacular Greek Revival styling. Other antebellum structures are suggested by local histories; if so, it is clear that all were greatly altered in later years and are not readily recognizable as antebellum structures (For additional information on the antebellum development of Corinth and its role within the Civil War, please see the "Siege and Battle of Corinth" nomination, NHL 5/9/1991).

While the origins of the Midtown Corinth Historic District may be rooted in the Antebellum era, its strength as a historic residential environment lies in its nearly seamless progression of architectural styles and house types that provide its unique character. Periods of general economic growth and prosperity in the whole of Corinth are reflected in the development and redevelopment of the housing stock within the district; the resulting streetscapes share qualities of architectural variety not common in historic residential areas of this rather modest size. Of additional note is the quality of egalitarianism reflected by the architecture of the Midtown Corinth Historic District. Unlike many communities, there is little sense of separation by economic status or class reflected by the organization of residences in the district. It is common to find small, modestly-detailed, seemingly middle-class houses standing on either side of a larger, highly-detailed, seemingly upper-income residence. There is no concentration of upper-income houses within a specific subsection or enclave. The irregular subdivision pattern of lots seems to contribute to this condition, since there is no specific part of the district which has been dedicated solely to large lot development. Some rather modest homes are found on a few of the larger lots, suggesting their construction occurred during times in the past when land costs were depressed. The contrary is also true, where larger, more expensive homes can be found on rather small lots. The suggestion is made again that these conditions are the result of the ebb and flow of the local economy through time.

United States Department of the Interior
National Park Service

NATIONAL REGISTER OF HISTORIC PLACES
CONTINUATION SHEET

Midtown Corinth Historic District
Corinth, Alcorn Co., MS

Section number 8 Page # 59

=====

A common example of this diversity is reflected by the western side of the 800 block of Jackson Street. Moving from south to north, this block contains, first, a refined high-styled example of a Colonial Revival house (811 Jackson Street, built ca. 1920-24), next to an equally fine Italianate side L-plan cottage (815 Jackson Street, built ca. 1880-85), situated beside a small, older center hall plan structure altered to the Colonial/Neoclassical Revival (821 Jackson Street, built ca. 1880-85; front porch altered ca. 1913-24), next to a modest Craftsman bungalow (823 Jackson Street, built ca. 1920-21). It is apparent that three major building periods are represented in this single part of Jackson Street, along with three house types and three architectural styles. Compound layers of architectural diversity like this one example is common in the district.

Twelve historic architectural styles are represented in the district, including the Greek Revival, Italianate, Gothic Revival, Queen Anne, Colonial Revival, Neoclassical Revival, Craftsman, Second Empire, Art Moderne, French Eclectic, Minimalist Traditional, and Tudor Revival, along with various sub-styles, transitional combinations of styles, or isolated stylistic elements. Fifteen common traditional house types or plans have also been identified in the district, not including dozens of their variations. Among these are center hall plans, double-cribs, saddlebags, modified shotguns, double-shotguns, composite cottages, cubical/pyramidal cottages, bungalows, four-squares, saltboxes, Capes, English cottages, homestead houses, side-hall townhouses, and side L-plan cottages. Types of traditional houses less common in the district include the I-house, the gable-dormer Gothic house, and, the extremely rare Y-plan cottage. Other types, such as the traditional shotgun, the single-pen, and the cross-hall plan are known to have once existed here, but have been lost to substantial alteration or demolition.

The architects, designers, builders and craftsmen who contributed to the historic qualities of the district are largely unknown, save for the three properties known to have been the work of Benjamin Franklin Liddon (1876-1952), the self-taught, native Corinthian whose buildings display high qualities of imagination, proportion and detail rarely found in the work of non-professionals. Liddon's known contributions to the district include his own Neoclassical home (804 Webster Street, built 1905-07), the unique Craftsman bungalow designed for his daughter (903 North Fillmore Street, built 1924), and the renovation of a former carriage house with Spanish Revival-influenced design (901 North Fillmore Street; built ca. 1915-20; altered ca. 1930-35).

In effect, the Midtown Corinth Historic District stands as something of a mirror of the digest of architectural tastes and types common to the whole of the South in the last half of the nineteenth and first half of the twentieth century. The house types represented here are not all-inclusive,

United States Department of the Interior
National Park Service

NATIONAL REGISTER OF HISTORIC PLACES
CONTINUATION SHEET

Section number 8 Page # 60 Midtown Corinth Historic District
Corinth, Alcorn Co., MS
=====

nor are its architectural styles: there are no raised center hall cottages or rows of shotguns, for instance; nor are there examples of the Stick-style, Shingle-style or clear examples of the Prairie style. However, the range of types and tastes does represent something of a common denominator of Southern architecture built within this same ninety-year window of time.

9. MAJOR BIBLIOGRAPHICAL REFERENCES

See continuation sheet.

PREVIOUS DOCUMENTATION ON FILE (NPS):

- preliminary determination of individual listing (36 CFR 67) has been requested.
- previously listed in the National Register
- previously determined eligible by the National Register
- designated a National Historic Landmark
- recorded by Historic American Buildings Survey # _____
- recorded by Historic American Engineering Record # _____

PRIMARY LOCATION OF ADDITIONAL DATA:

- State historic preservation office Local government
- Other state agency University
- Federal agency Other
- Specify Repository: Mississippi Department of Archives and History
Corinth Preservation Commission

10. Geographical Data

Acreeage of Property: Approximately 84 acres

UTM References: Zone Easting Northing Zone Easting Northing

A	16	360515	3867210	B	16	361860	3867200
C	16	361830	3866140	D			

___ See continuation sheet.

Verbal Boundary Description: See continuation sheet.

Boundary Justification: See continuation sheet.

11. Form Prepared By

Name/Title: John Linn Hopkins, Preservation Consultant

Organization: Corinth Preservation Commission Date: June 1, 1993

Street & Number: 974 Philadelphia Street Telephone: (901) 278-5186

City or Town: Memphis State: TN ZIP: 38104

PROPERTY OWNER

Name: Multiple

Street & Number: N/A

Telephone: N/A

City/Town: N/A

State: N/A

ZIP: N/A

United States Department of the Interior
National Park Service

NATIONAL REGISTER OF HISTORIC PLACES
CONTINUATION SHEET

Section number 9 Page # 61 Midtown Corinth Historic District
Corinth, Alcorn Co., MS

=====

MAJOR BIBLIOGRAPHICAL REFERENCES

Alcorn County Historical Association, The History of Alcorn County Mississippi (Dallas: National ShareGraphics, 1983).

Corinth Preservation Commission, Historical and Architectural Survey; Midtown Corinth Historic District. Available through the Commission, Corinth City Hall; and, Historic Preservation Section, Mississippi Department of Archives and History.

Miller, Ernest H., comp., Corinth, Mississippi City Directory, 1913-14, The Delta Series, Volume II (Asheville, N.C.: Piedmont Directory Company, 1912)

Sanborn-Ferris Map & Publishing Company. "Sanborn Maps of Corinth, Mississippi", map series 1889, 1894, 1899, 1904, 1909, 1913, and 1924. Microfilm copies in possession of the Mississippi State Archives, Department of Archives and History, Jackson, MS.

Sanders, Joseph Todd, "M.A. Miller's Sketchbook of 1860 Corinth: The Built Environment of a Mississippi Boom Town". Unpublished Master's Thesis, Mississippi State University, Starkville, MS, 1992.

Sandy, Stephanie L., comp. Abstracts of the Daily Corinthian and Weekly Corinthian newspapers, Corinth, MS, ca. 1900-1926. Unpublished research collection in the possession of the compiler.

United States Department of the Interior
National Park Service

NATIONAL REGISTER OF HISTORIC PLACES
CONTINUATION SHEET

Section number 10 Page # 62 Midtown Corinth Historic District
Corinth, Alcorn Co., MS

=====

GEOGRAPHICAL INFORMATION, continued:

Verbal Boundary Description

The boundaries of the Midtown Corinth Historic District are delineated with a heavy black dashed line shown on the attached Alcorn County property tax maps #08-01-01-1; 08-01-01-2; 08-01-01-3; and, 08-01-01-4. The proposed district is a large L-shaped area roughly bound by portions of East Main, East Linden, Douglas, Proper, Cruise, North Cass, Bunch, Childs, and Washington streets.

Boundary Justification

The boundaries of the Midtown Corinth Historic District include the largest cohesive historic residential area developed during the Antebellum era in Corinth beginning in ca. 1855; the historical development and redevelopment of the district continued from this period through ca. 1941.

United States Department of the Interior
National Park Service

NATIONAL REGISTER OF HISTORIC PLACES
CONTINUATION SHEET

Midtown Historic District

Section number Photos Page # 63 Corinth, Alcorn County, Mississippi
=====

PHOTO LIST

MIDTOWN HISTORIC DISTRICT

Corinth, Alcorn County, Mississippi

Photographer: John Linn Hopkins

Date: June, 1993

Negatives: Mississippi Department of Archives and History

Photo 1 of 31

918 Taylor Street, looking southeast

Photo 2 of 31

St. James Church of God in Christ, 1101 Gloster
Street, looking generally north

Photo 3 of 31

Liddon House, 804 Webster Street, looking generally
northeast

Photo 4 of 31

Ijams House, 1203 Waldron Street, looking generally
northeast

Photo 5 of 31

701 Kilpatrick Street, looking generally northwest

Photo 6 of 31

Fish Pond House, 708 Kilpatrick Street, looking
generally northeast

Photo 7 of 31

716 Kilpatrick Street, looking generally northeast

Photo 8 of 31

903(a) Foote Street (part Foote Street Church of
Christ), looking generally southwest

Photo 9 of 31

Foote Street Church of Christ, 903 Foote Street,
looking generally northwest

United States Department of the Interior
National Park Service

NATIONAL REGISTER OF HISTORIC PLACES
CONTINUATION SHEET

Midtown Historic District

Section number Photos Page # 64 Corinth, Alcorn County, Mississippi
=====

- Photo 10 of 31
915 Waldron Street, looking generally northeast
- Photo 11 of 31
Kimmonwych, 304 North Madison Street, looking
generally south
- Photo 12 of 31
1124 Cruise Street, looking generally southeast
- Photo 13 of 31
South side of Jackson Street, from 822 Jackson Street,
looking southeast from the intersection of East Linden
Street
- Photo 14 of 31
214 Bunch Street, looking generally southwest
- Photo 15 of 31
Veranda House (a.k.a. Curlee House), 705 Jackson
Street, looking generally west
- Photo 16 of 31
815 Jackson Street, looking generally northwest
- Photo 17 of 31
823 Jackson Street, looking generally west
- Photo 18 of 31
McCullar House, 903 North Fillmore Street, looking
generally northwest
- Photo 19 of 31
903 North Franklin Street, looking generally northwest
- Photo 20 of 31
Zachary-Hatcher House, 1125 Cruise Street, looking
generally north
- Photo 21 of 31
810 Jackson Street, looking generally east

United States Department of the Interior
National Park Service

NATIONAL REGISTER OF HISTORIC PLACES
CONTINUATION SHEET

Midtown Historic District

Section number Photos Page # 65 Corinth, Alcorn County, Mississippi
=====

Photo 22 of 31

1004 North Fillmore Street, looking northwest across
East Linden

Photo 23 of 31

Street name, impressed into the concrete sidewalk, located at
the northeast corner of Bunch and Washington streets.
Concrete pylon street signposts were installed to mark
streets for passing motorists in the ca. 1930s;
impressed street names in the sidewalks were installed
for pedestrians. Only perhaps one-third of the sidewalks still
sport these features.

Photo 24 of 31

208 East Linden Street, looking generally southeast

Photo 25 of 31

1013 Jackson Street, facing generally west

Photo 26 of 31

Taylor House, 1022 North Fillmore Street, looking
generally east

Photo 27 of 31

West side of Webster Street, looking northwest from 915
Taylor Street toward 921 Taylor Street, at right

Photo 28 of 31

West side of North Cass Street, looking generally
southwest from 911 North Cass Street towards 907 North
Cass Street, at left

Photo 29 of 31

913-15 Gloster Street, looking north

Photo 30 of 31

New Hope, 715 North Madison Street, looking west

Photo 31 of 31

616 North Madison Street, looking generally east

United States Department of the Interior
National Park Service

NATIONAL REGISTER OF HISTORIC PLACES
CONTINUATION SHEET

Midtown Corinth Historic District
Corinth, Alcorn Co., MS

Section number Page # 66

=====

NOTES ON ARCHITECTURAL MORPHOLOGY

Architectural terminology employed in this nomination has been derived from a number of sources, both contemporary and historic. Principal among these are the **Memphis Comprehensive Cultural Resources Survey Manual**, compiled by Ms. Kim Isbell for the City of Memphis and Memphis Heritage, Inc. This manual assimilates and refines contemporary terminology from numerous contemporary sources, including A Field Guide to American Houses by Virginia and Lee McAlester (New York: Albert A Knopf, 1984); Historic Architecture Sourcebook by Cyril M. Harris, editor (New York: McGraw-Hill, 1977); and, American Vernacular Design by Herbert Gottfried and Jan Jennings (Ames, Iowa: Iowa State University Press, 1988), among others. Other terms are derived from nationally-distributed historical sources, such as The Architects' and Builders' Handbook, by Frank E. Kidder and Thomas Nolan (New York: John S. Wiley & Sons, revised seventeenth edition, 1921); An Illustrated Dictionary of Words Used in Art and Archaeology, by J. W. Mollett (Boston: Houghton, Mifflin and Company, 1883); Universal Design Book, 1908-1908, compiled by the Wholesale Sash, Door and Blind Manufacturers' Association of the Northwest (Chicago: Shattock and McKay Co., 1908); Practical Carpentry edited by William A. Radford (Chicago: America Publishing Co., 1907); Home Owner's Catalogs, compiled by the F. W. Dodge Corporation (New York: F. W. Dodge Corp., 1937), and others.

(As a note, the Memphis **Manual** is currently being revised and refined to reflect survey data collected from approximately 10,000 structures over the previous five years of field work. Publication of the revised **Manual** is expected.)

At the request of the Mississippi Department of Archives and History, the following morphology of terms used in this nomination follows.

HOUSE TYPES

Composite cottage

A composite cottage is a plan form common to the South in the period of ca. 1880 to 1910. Major features of this cottage type are a complex hip or hip-on-hip roof with at least one front-facing gable end; the gable end is often enclosed with a boxed cornice, covered with a narrow roof strip. An over-sized window (cottage window) is often found in the wall beneath the front-facing gable end. An L-shaped porch is almost a requisite element, commonly covered with a low hip or shed roof. A front and a side entrance off of the porch ends is very common. It has been said that the composite cottage is merely a one-story or story and one-half version of the Homestead house.

United States Department of the Interior
National Park Service

NATIONAL REGISTER OF HISTORIC PLACES
CONTINUATION SHEET

Section number Page # 67 Midtown Corinth Historic District
Corinth, Alcorn Co., MS

=====

Homestead House

A homestead house appears to be a more national house type than the composite cottage. Like the composite cottage, the Homestead house is capped with a complex hip and gable roof; the gable ends are often enclosed. Massing of the house is complex, asymmetrical and vertical. The principal porch is L-shaped, often piggy-backed with a one-bay porch on the second level.

Cubical cottage

The cubical cottage is a common vernacular form built between ca. 1900 and 1920. The principal characteristic of this small house type is that it is as deep as it is wide. While this type has often been described as a one-story version of a four-square, its plan shares little in common with the larger structure. In general, the door is centered on the facade and opens directly into a small living room. To one side is a parlor, which often doubles as a bedroom; a center hall leads to the rear.

Pyramidal cottage

The pyramidal cottage is a subset of the cubical cottage, and it was also built between ca. 1900-1920. The trait that sets this type apart from the cubical cottage is it has a true pyramidal roof (or very nearly so) as opposed to a hip roof; as built in this period, the slope of the roof is quite steep-- often in excess of 45 degrees. As a result, the vertical height of the roof is greater than the height of the walls. The roof line is rarely broken by dormers or gablets. Pyramidal roofs may be found on other types, but they remain distinctively separate from the pyramidal cottage by virtue of their own characteristics.

Side L-plan cottages and houses

The side L-plan cottage is a very common Southern form, perhaps derived from a vernacular Greek Revival type identified by Glassie as a "gable front and side wing". Even so, the side L-plan seen in the South is a distinctly different house type. The side L-plan is a four or five-bay wide structure with gable roofs, laid out in an L-shaped or T-shaped plan, which is sited with the longer axis parallel to the street. The choice of name for this form is intended to distinguish it from the front-facing L or T plan, where the axis of the structure

United States Department of the Interior
National Park Service

NATIONAL REGISTER OF HISTORIC PLACES
CONTINUATION SHEET

Midtown Corinth Historic District
Corinth, Alcorn Co., MS

Section number Page # 68

=====

Side L-plan, continued:

runs perpendicular to the street with the wing portion at the rear. The form identified by Glassie has an entrance in the front-facing gable end. The side L form has no entrance in the gable-front area of the facade; instead, it is located near the inside corner of the two blocks, inside the partial-width porch that runs across the front of the side-gable wing. The cottage form of this structure appears in ca. 1865 and survives until the 1910s. Two-story versions of this type are not uncommon and often feature two-story porches. Two-story side L plans were rarely built after ca. 1890.

Modified Shotgun

The modified shotgun is a taller, wider version of the classic Southern shotgun that shares many of its general characteristics. The key difference in plan between the two is that the modified shotgun possesses a hall that is separated from the rooms of the house. A small foyer is found inside the front door; a narrow bathroom is often found to one side of the hall, opposite the other rooms. The modified shotgun may be easily recognized by looking for the small window that lights the bath. This type appears to be a twentieth century form, built over the period of ca. 1900-1920.

Cape (a.k.a. "Cape Cod")

The twentieth century Cape is a revival of the seventeenth and eighteenth century type found in the New England states; it has been previously recognized as a traditional house type by the McAlesters and others. The difference in terminology is due largely to the fact that the term "Cape" was often the name used to describe this little house in periodicals of the 1930s and 1940s; it has survived in the language of the real estate profession ever since. "Capes" are found in nearly a dozen variations upon the original three- or five-bay theme, and thus, deserve a separate name than the true Colonial type. Variations included side L-plans, center (gable-front) bays, and telescopic Capes (telescopic Capes feature asymmetrical or symmetrical side wings aligned on the same axis as the main block; the rooflines are broken to imitate the appearance of additions made over time). Capes begin to appear in the 1910s and survive to this day.

United States Department of the Interior
National Park Service

NATIONAL REGISTER OF HISTORIC PLACES
CONTINUATION SHEET

Section number Page # 69 Midtown Corinth Historic District
Corinth, Alcorn Co., MS

=====

ARCHITECTURAL STYLES

Minimalist Traditional and Commercial Minimalist

The Minimalist Traditional style is recognized by the McAlesters and others as a popular architectural influence that reaches prominence in the mid-to-late 1920s and lasting until the mid-to-late 1950s. The style may have been influenced by the preference for stripped-down detailing and smoother surfaces of the Art Moderne and other early Modernist movements. Minimalist Traditional-influenced houses are notable for their minimal architectural detailing. Gable ends tend to possess flush cornices and soffits possess quite shallow overhangs--there are few, if any moldings applied to these features. Window trims are often non-existent, and the windows themselves are placed quite close to the wall surface in comparison with earlier buildings. Shadows are minimized by the lack of surface detail; asbestos siding becomes a common wall finish for Minimalist Traditional houses since it creates very little shadow line. Porches tend to be small, one-bay wide features supported by thin wooden posts or light wrought iron posts as original treatments.

Commercial Minimalist is the same style in the commercial environment, notable for its lack of cornice treatments and surface detailing. A tile coping may be the only form of cornice treatment. Sign panels, if any, are only minimally recessed, perhaps little more than 1/2 inch. Vents are functional rectangular or square features containing cast diaper-pattern, wire mesh or expanded metal covers. Rake-textured bricks or highly-glazed bricks are common materials. Storefronts often resemble the traditional forms of prior styles, but may have been designed with bulkheads integral to the piers dividing the windows from the doors; transoms are often lacking entirely.

Neo-Traditional

The Neo-Traditional style is a very recent design phenomena, gaining popularity in the late 1980s. The style is noted by a return to forms details and finishes reflective of vernacular houses from the nineteenth century. No particular style is stressed or revived; instead, features of many styles are incorporated, or none at all. Houses in this style are frequently of frame construction with narrow-width vinyl siding as an original material. Narrow friezes are commonly used beneath boxed cornices. Larger-scale porches are returned to the front of the house, often featuring boxed columns or turned posts, sometimes with scroll-sawn brackets. Gable-front dormers are not uncommon. Windows are often 6/6 or 1/1 double-hung sashes. Doors closely imitate Victorian or Colonial Revival patterns, often containing large stained glass lights or sandblasted designs.

United States Department of the Interior
National Park Service

NATIONAL REGISTER OF HISTORIC PLACES
CONTINUATION SHEET

Midtown Corinth Historic District
Corinth, Alcorn Co., MS

Section number Page # 70

=====

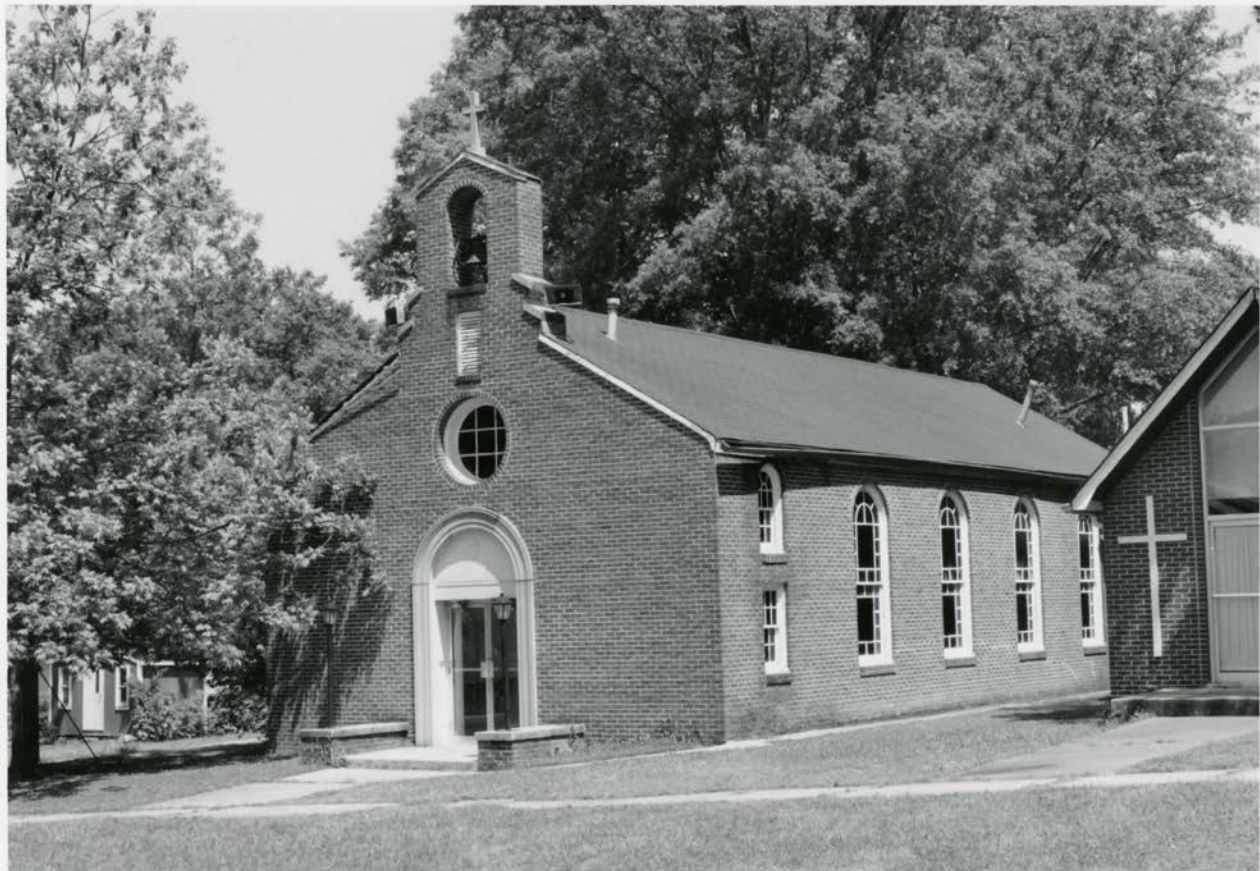
ARCHITECTURAL FEATURES

Airplane

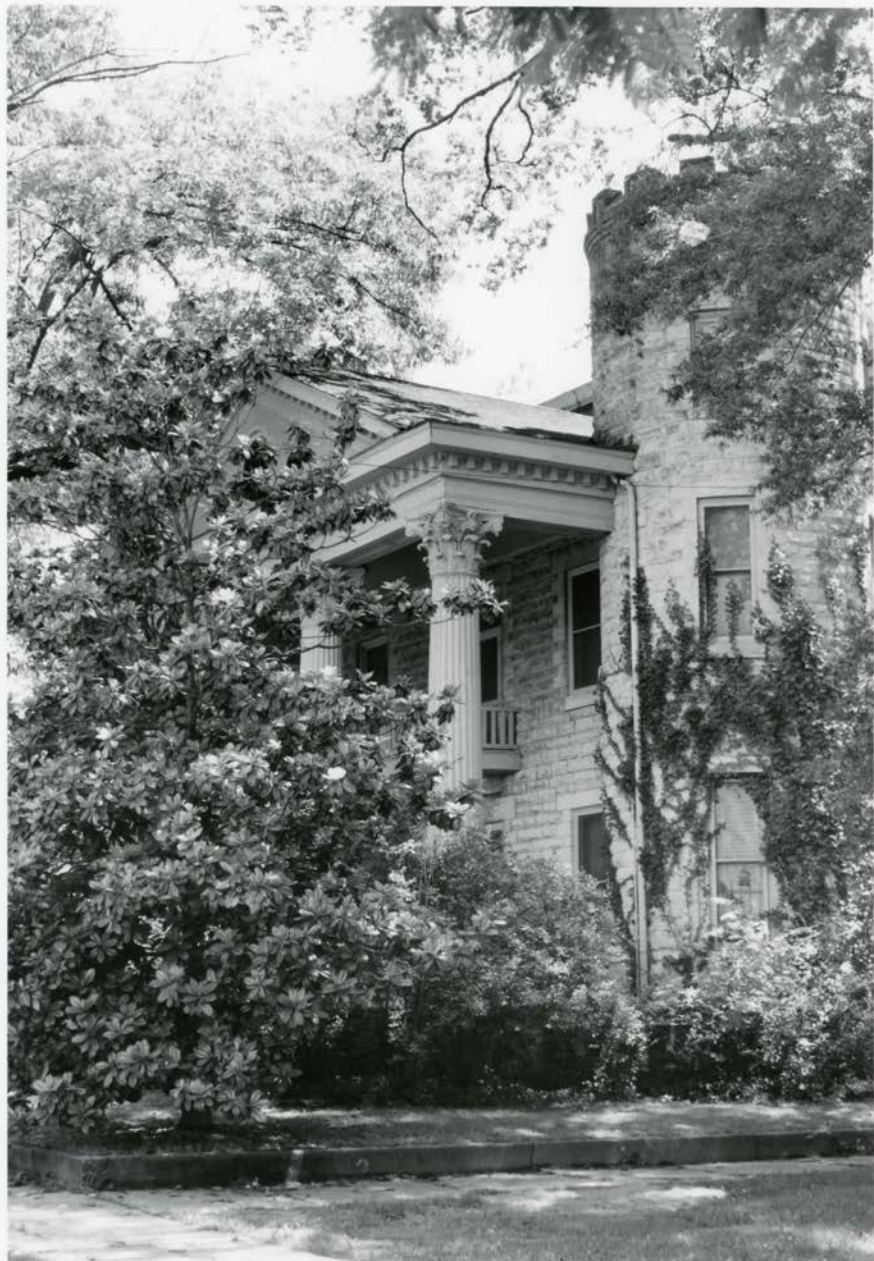
The term "airplane" is commonly associated with the term "airplane bungalow"-- a term that has been in common national use for a number of years. The "airplane", of course, is a feature of a one-story bungalow, which possesses a one or two-room second story at the rear of the structure. The airplane often features a hip roof with its axis perpendicular to the axis of the main house, though exceptions to his rule abound. Many windows are used to provide enhanced ventilation. Research on "airplane bungalows" in the Memphis area has revealed that many "airplane bungalows" were originally built without the upper room or rooms, and were added at a later date. Since this feature cannot be consistently identified as an original treatment, the term "airplane bungalow" is inappropriate for field survey use. Instead, the term "airplane" is used in the context of the description of the roof, much like a dormer.



MIDTOWN CORINTH HISTORIC DISTRICT, CORINTH, ALCORN CO., MS PHOTO 1 OF 31



MIDTOWN HISTORIC DISTRICT, CORINTH, DEKALB CO., MS PHOTO 2 OF 31



MIDTOWN HISTORIC DISTRICT, CORINTH, DEKALB CO., MS PHOTO 3 OF 31



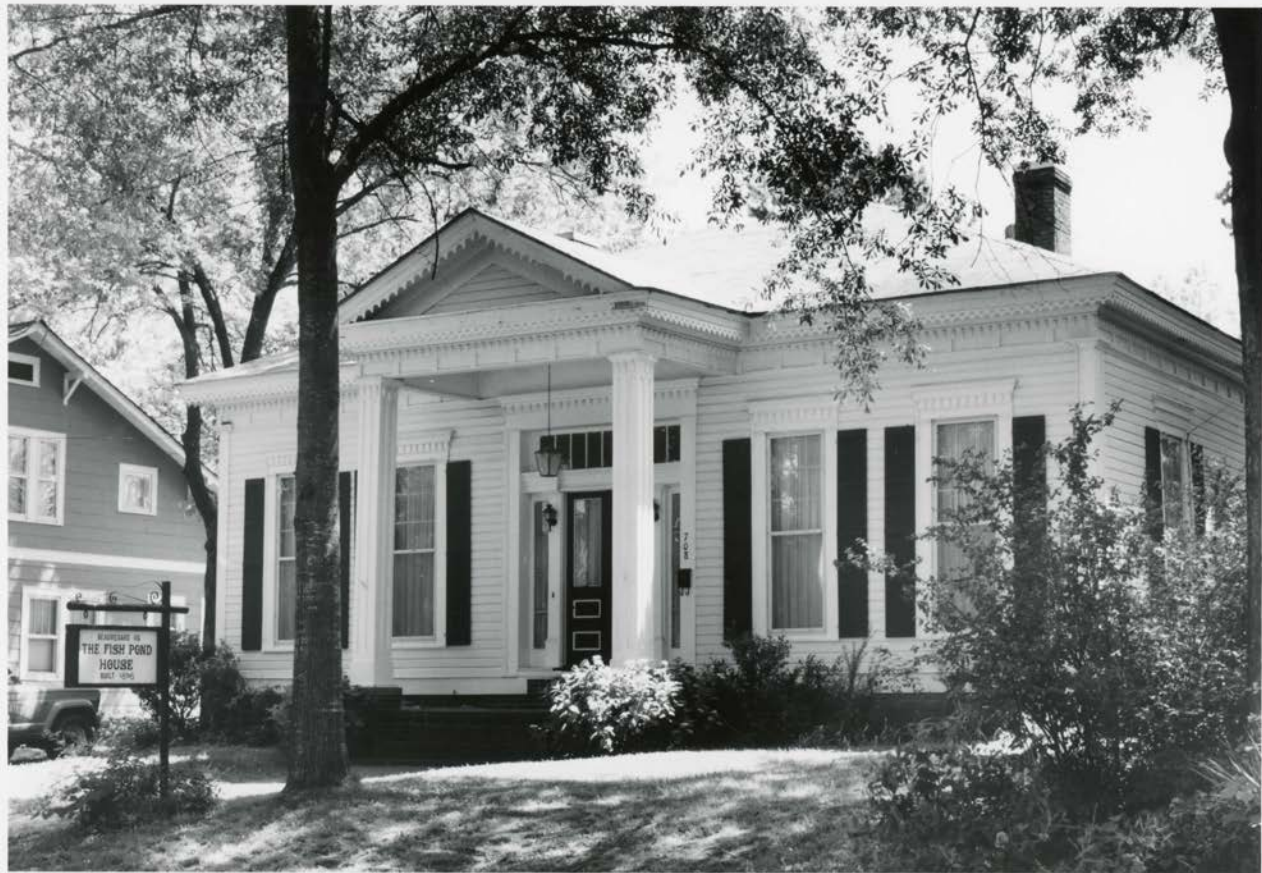
MIDTOWN HISTORIC DISTRICT, CORINTH, ALCOA CO., MS

PHOTO 4 OF 31



MIDTOWN HISTORIC DISTRICT, CORINTH, ALCOA CO., MS

PHOTO 5 OF 31



MIDTOWN HISTORIC DISTRICT, CORINTH, ALCORD CO., MS

PHOTO 6 OF 31



MIDTOWN HISTORIC DISTRICT, CORINTH, ALCOUD CO., MS PHOTO 7 OF 31



MIDTOWN HISTORIC DISTRICT, CORINTH, ALCOON CO., MS

PHOTO 8 OF 31



MIDTOWN CORINTH HISTORIC DISTRICT, CORINTH, ALCON CO., MS

PHOTO 9 OF 31



MIDTOWN HISTORIC DISTRICT, CORINTH, ALCOA CO., MS

PHOTO 10 OF 31



MIDTOWN HISTORIC DISTRICT, CORINTH, ALABAMA CO. MS PHOTO 11 OF 31



MIDTOWN HISTORIC DISTRICT, COLWELL, ALCONR CO., MS

PHOTO 12 OF 31



MIDTOWN HISTORIC DISTRICT, CORINTH, ALCONN CO., MS

PHOTO 13 OF 31



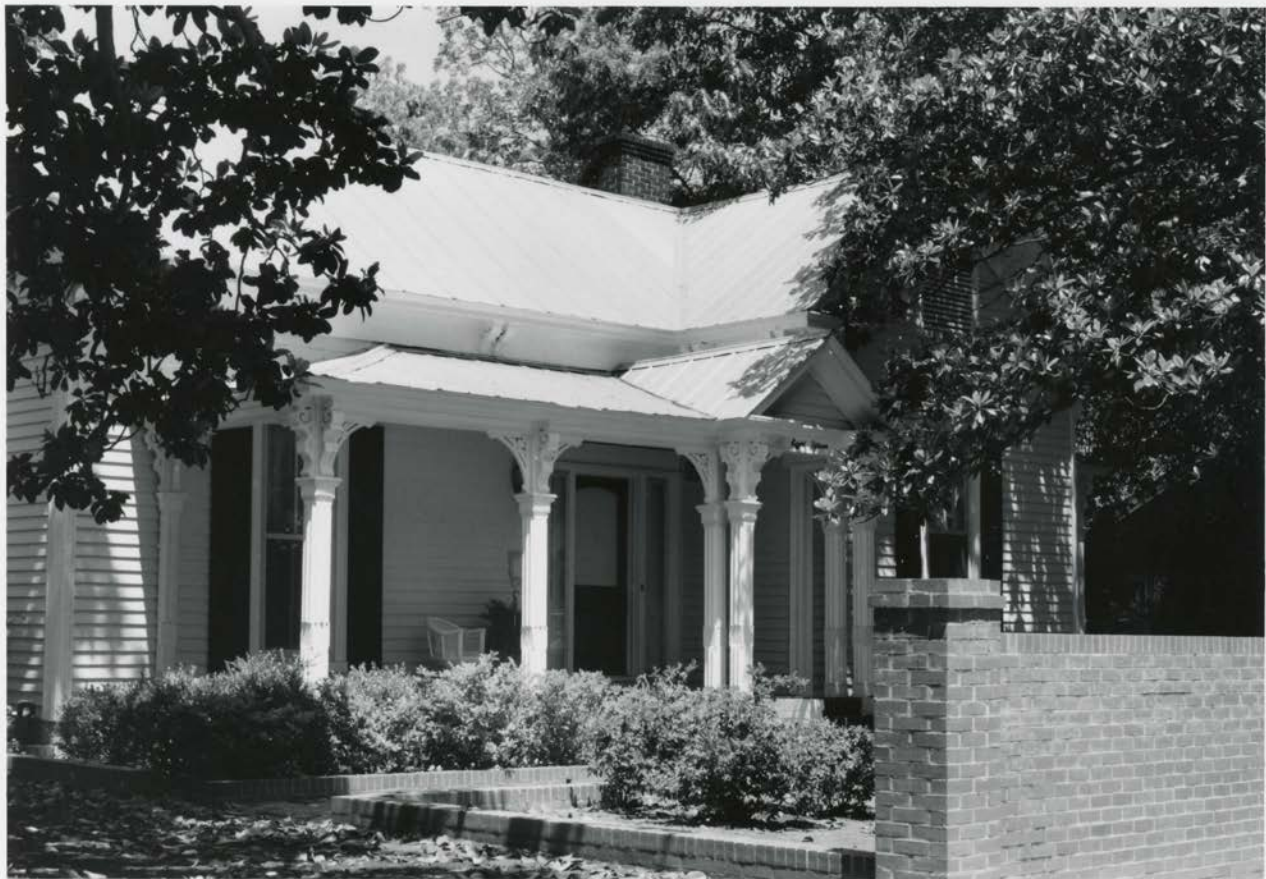
MIDTOWN HISTORIC DISTRICT, CORINTH, ALCOA CO., MS

PHOTO 14 OF 31



MIDTOWN HISTORIC DISTRICT, CORINTH, ALCORN CO., MS

PHOTO 15 OF 31



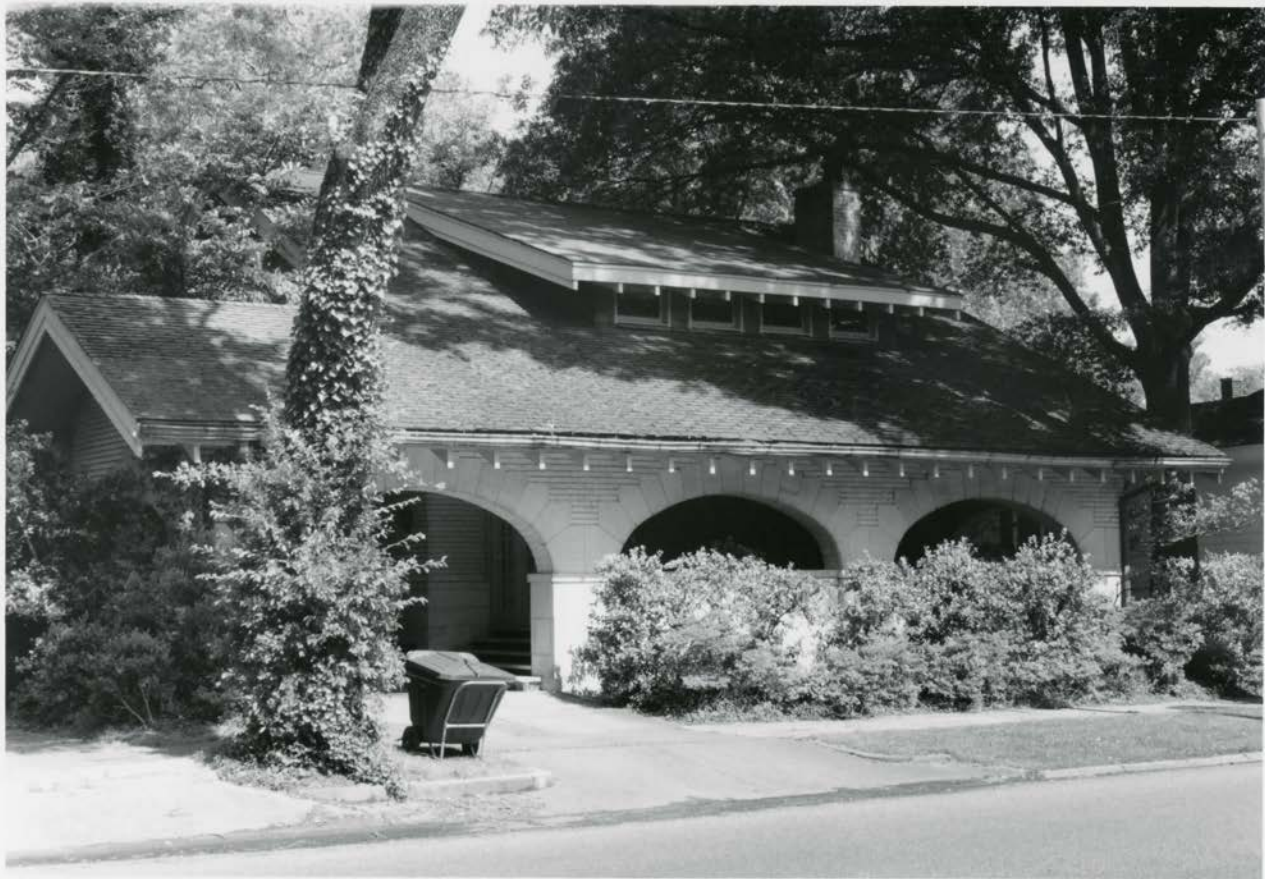
MIDTOWN HISTORIC DISTRICT, CORINTH, DEKALB CO., MS

PHOTO 16 OF 31



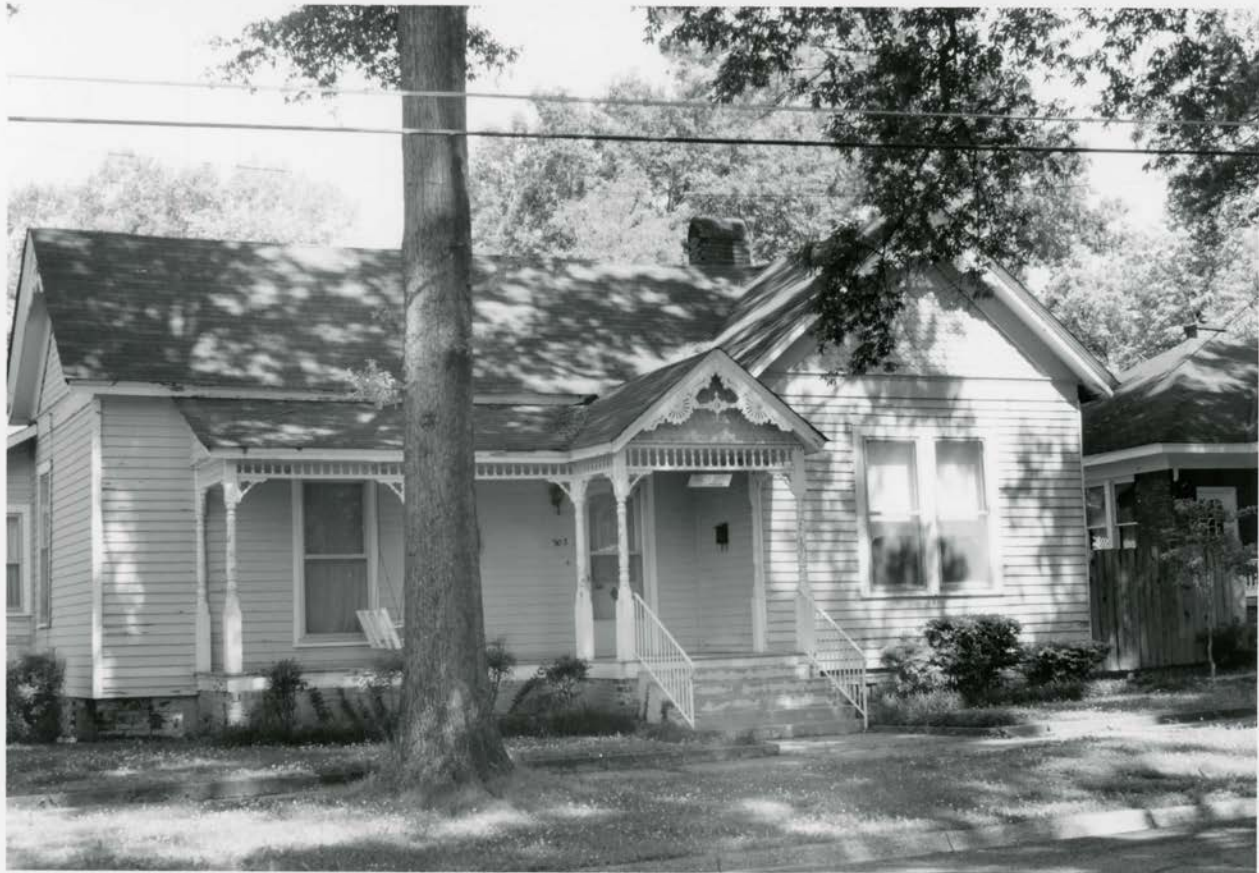
MIDTOWN HISTORIC DISTRICT, CORINTH, ALCORN CO., MS

PHOTO 17 OF 31



MIDTOWN HISTORIC DISTRICT, CORINTH, ALCOA CO., MS

PHOTO 18 OF 31



MIDTOWN HISTORIC DISTRICT, CORINTH, ALCORN CO., MS

PHOTO 19 OF 31



MIDTOWN HISTORIC DISTRICT, CORINTH, ALCORD CO., MS

PHOTO 20 OF 31



MIDTOWN HISTORIC DISTRICT, CORNICH, SLOORN CO., MS

PHOTO 21 OF 31



MIDTOWN HISTORIC DISTRICT, CORINTH, ALCORN CO., MS PHOTO 22 OF 31



MIDTOWN HISTORIC DISTRICT, CORINTH, ALCOB CO., MS PHOTO 23 OF 31



MIDTOWN HISTORIC DISTRICT, CORINTH, ALCORN CO., MS

PHOTO 24 OF 31



MIDTOWN HISTORIC DISTRICT, CORINTH, DEARBORN CO., MS

PHOTO 25 OF 31



MIDTOWN HISTORIC DISTRICT, CORINTH, ALCORN CO., MS

PHOTO 26 OF 31



MIDTOWN HISTORIC DISTRICT, CORINTH, DEKALB CO., MS PHOTO 27 OF 31



MIDTOWN HISTORIC DISTRICT, CORINTH, ALCORN CO., MS

PHOTO 28 OF 31



MIDTOWN HISTORIC DISTRICT, CORINTH, DEKALB CO., MS PHOTO 29 OF 31



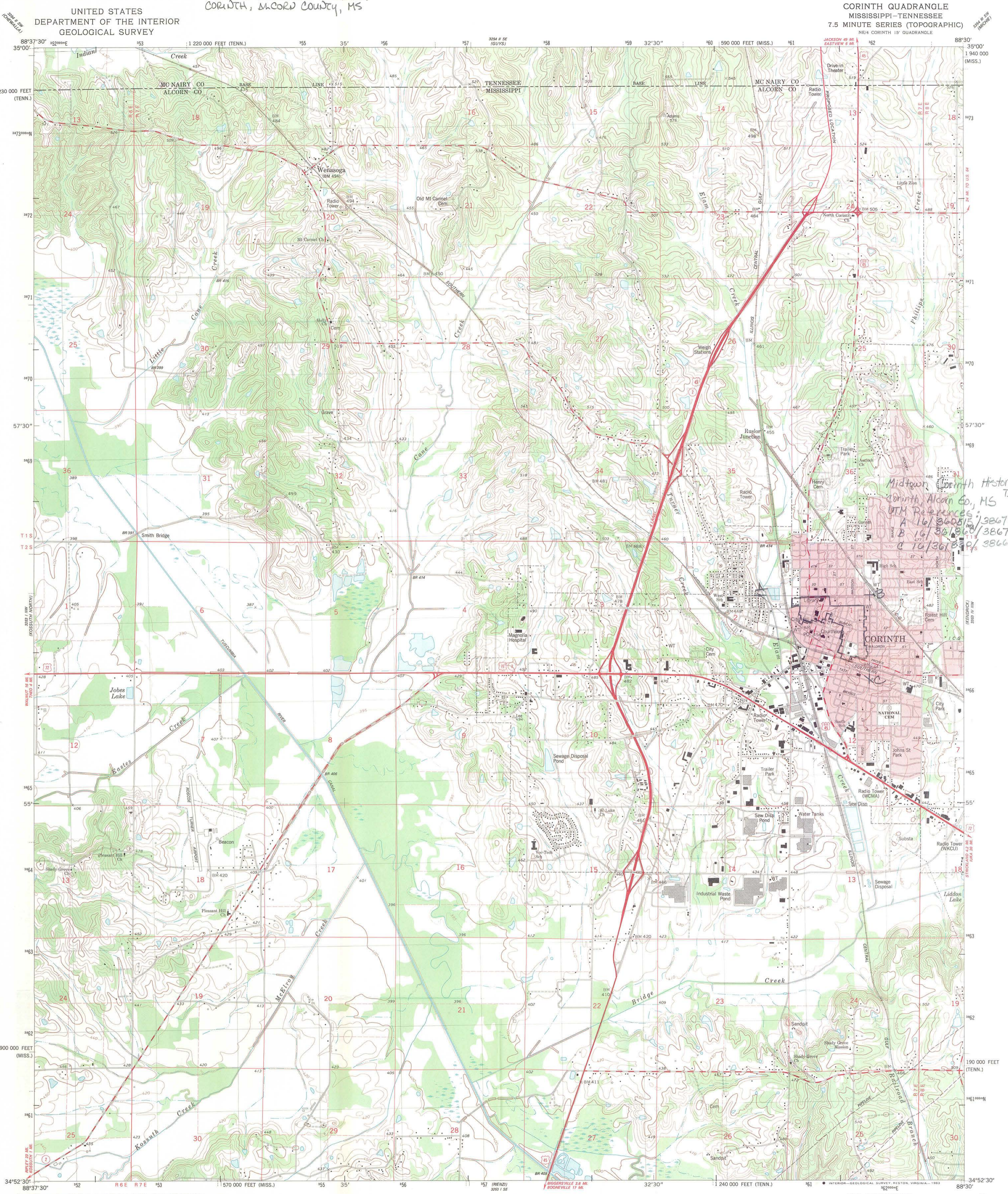
MIDTOWN HISTORIC DISTRICT, CORINTH, ALCOORN CO., MS PHOTO 30 OF 31



MIDTOWN HISTORIC DISTRICT, CORINTH, ALCOON CO., MS PHOTO 31 OF 31

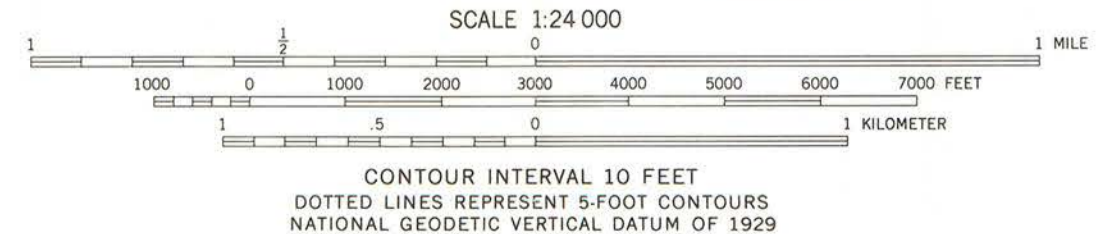
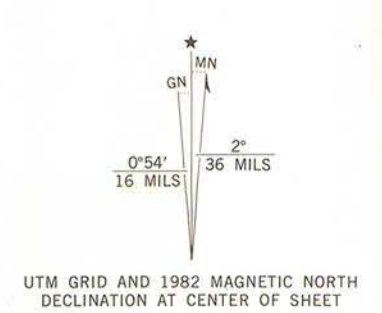
MIDTOWN HISTORIC DISTRICT
CORINTH, McCOY COUNTY, MS

CORINTH QUADRANGLE
MISSISSIPPI-TENNESSEE
7.5 MINUTE SERIES (TOPOGRAPHIC)
NE 1/4 CORINTH 15' QUADRANGLE



Midtown Corinth Historic District
Corinth, Alcorn Co., MS
BTM References:
A 16/360519/3867210
B 16/361816/3867200
C 16/361819/3866140

Mapped, edited, and published by the Geological Survey
Control by USGS, NOS/NOAA and Mississippi State Highway Department
Topography by photogrammetric methods from aerial photographs taken 1975. Field checked 1978. Map edited 1982
Projection: Mississippi coordinate system, east zone (transverse Mercator)
10,000-foot grid ticks based on Mississippi coordinate system, east zone and Tennessee coordinate system
1000-meter Universal Transverse Mercator grid, zone 16
1927 North American Datum
To place on the predicted North American Datum 1983 move the projection lines 8 meters south and 4 meters east as shown by dashed corner ticks
Red tint indicates area in which only landmark buildings are shown
Fine red dashed lines indicate selected fence and field lines where generally visible on aerial photographs. This information is unchecked



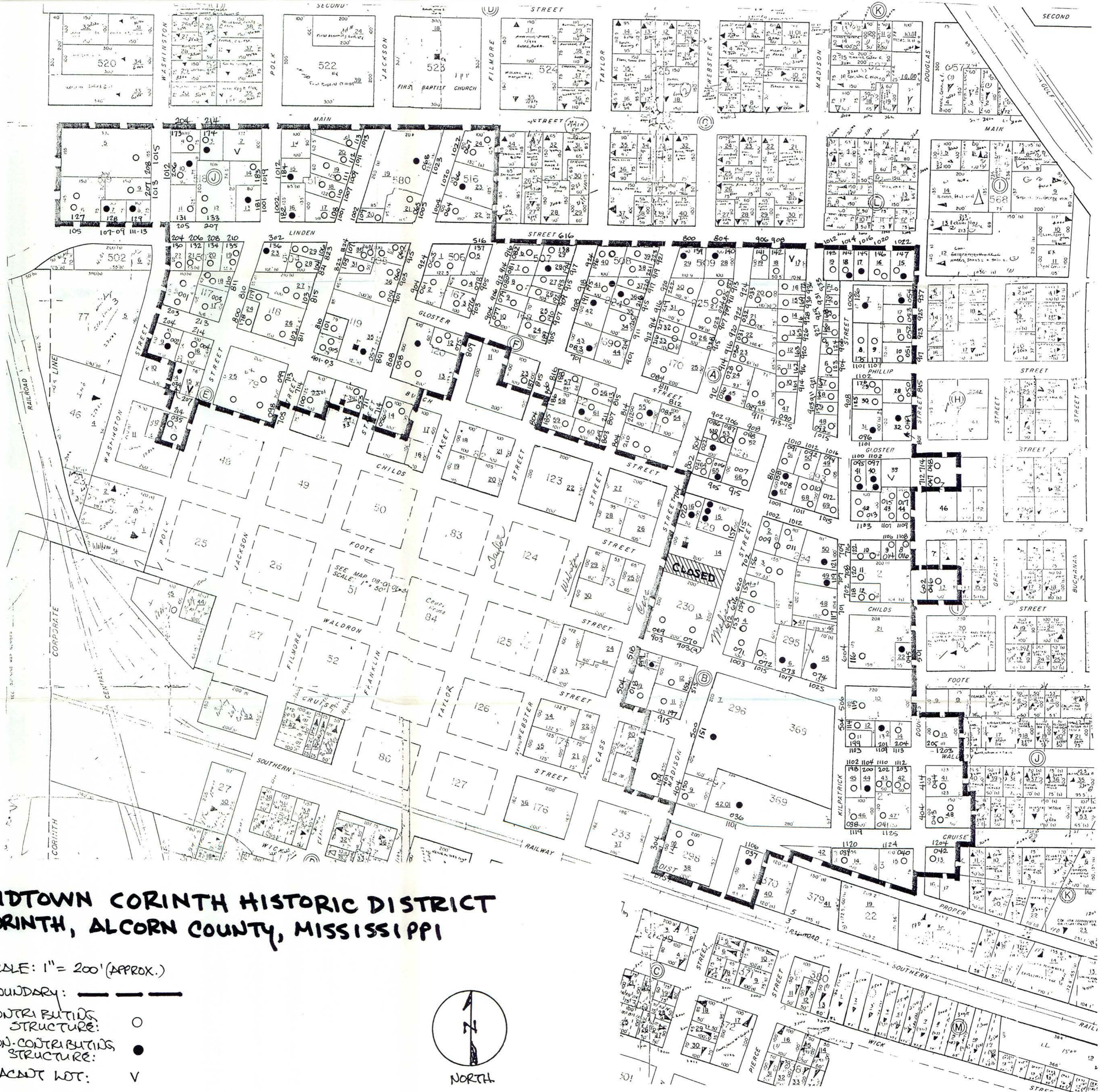
ROAD CLASSIFICATION

Primary highway, hard surface	Light-duty road, hard or improved surface
Secondary highway, hard surface	Unimproved road
Interstate Route	U.S. Route
	State Route



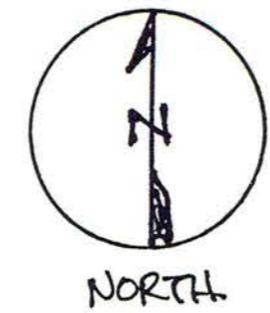
CORINTH, MISS.-TENN.
NE 1/4 CORINTH 15' QUADRANGLE
N3452.5-W88307.5
1982
DMA 3253 I NE-SERIES V843

THIS MAP COMPLIES WITH NATIONAL MAP ACCURACY STANDARDS
FOR SALE BY U. S. GEOLOGICAL SURVEY, RESTON, VIRGINIA 22092
AND TENNESSEE DIVISION OF GEOLOGY, NASHVILLE, TENNESSEE 37219
A FOLDER DESCRIBING TOPOGRAPHIC MAPS AND SYMBOLS IS AVAILABLE ON REQUEST



MIDTOWN CORINTH HISTORIC DISTRICT CORINTH, ALCORN COUNTY, MISSISSIPPI

- SCALE: 1" = 200' (APPROX.)
- BOUNDARY: **—————**
- CONTRIBUTING STRUCTURE: ○
- NON-CONTRIBUTING STRUCTURE: ●
- VACANT LOT: V



National Register of Historic Places

Note to the record

Additional Documentation: 2014

UNITED STATES DEPARTMENT OF THE INTERIOR
NATIONAL PARK SERVICE

NATIONAL REGISTER OF HISTORIC PLACES
EVALUATION/RETURN SHEET

REQUESTED ACTION: ADDITIONAL DOCUMENTATION

PROPERTY NAME: Midtown Corinth Historic District

MULTIPLE NAME:

STATE & COUNTY: MISSISSIPPI, Alcorn

DATE RECEIVED: 10/31/14 DATE OF PENDING LIST:
DATE OF 16TH DAY: DATE OF 45TH DAY: 12/17/14
DATE OF WEEKLY LIST:

REFERENCE NUMBER: 93001433

NOMINATOR: STATE

REASONS FOR REVIEW:

APPEAL: N DATA PROBLEM: N LANDSCAPE: N LESS THAN 50 YEARS: N
OTHER: N PDIL: N PERIOD: N PROGRAM UNAPPROVED: N
REQUEST: Y SAMPLE: N SLR DRAFT: N NATIONAL: N

COMMENT WAIVER: N

ACCEPT RETURN REJECT 11-21-2014 DATE

ABSTRACT/SUMMARY COMMENTS:

The proposed move of this contributing resource will not affect its contributing status. The building will retain its orientation and basic relationship to the street.

RECOM./CRITERIA Accept move

REVIEWER [Signature]

DISCIPLINE _____

TELEPHONE _____

DATE _____

DOCUMENTATION see attached comments Y/N Y see attached SLR Y/N Y

If a nomination is returned to the nominating authority, the nomination is no longer under consideration by the NPS.

United States Department of the Interior
National Park Service

National Register of Historic Places
Continuation Sheet

Midtown Historic District

Name of Property

Alcorn County, Mississippi

County and State

Name of multiple listing (if applicable)

Section number _____ Page _____

Form Prepared By

name/title: William M. Gatlin _____
 organization: Mississippi Department of Archives and History _____
 street & number: P. O. Box 571 _____
 city or town: Jackson _____ state: MS _____ zip code: 39205-0571 _____
 e-mail_bgatlin@mdah.state.ms.us _____
 telephone: 601-576-6951 _____
 date: October 20, 2014 _____

Photo Log

Name of Property: 810 Polk Street, Contributing Resource in Midtown Historic District

City or Vicinity: Corinth

County: Alcorn State: Mississippi

Photographer: Kenneth Williams

Date Photographed: October 2014

Description of Photograph(s) and number, include description of view indicating direction of camera:

- 1 of 4. 810 Polk Street. Camera facing east.
- 2 of 4. 810 and 800 Polk Street. Camera facing east.
- 3 of 4. 810 and 800 Polk Street. Camera facing northwest
- 4 of 4. Outbuilding, 810 Polk Street. Camera facing northwest.

EXISTING DUNCAN HOUSE LOCATION

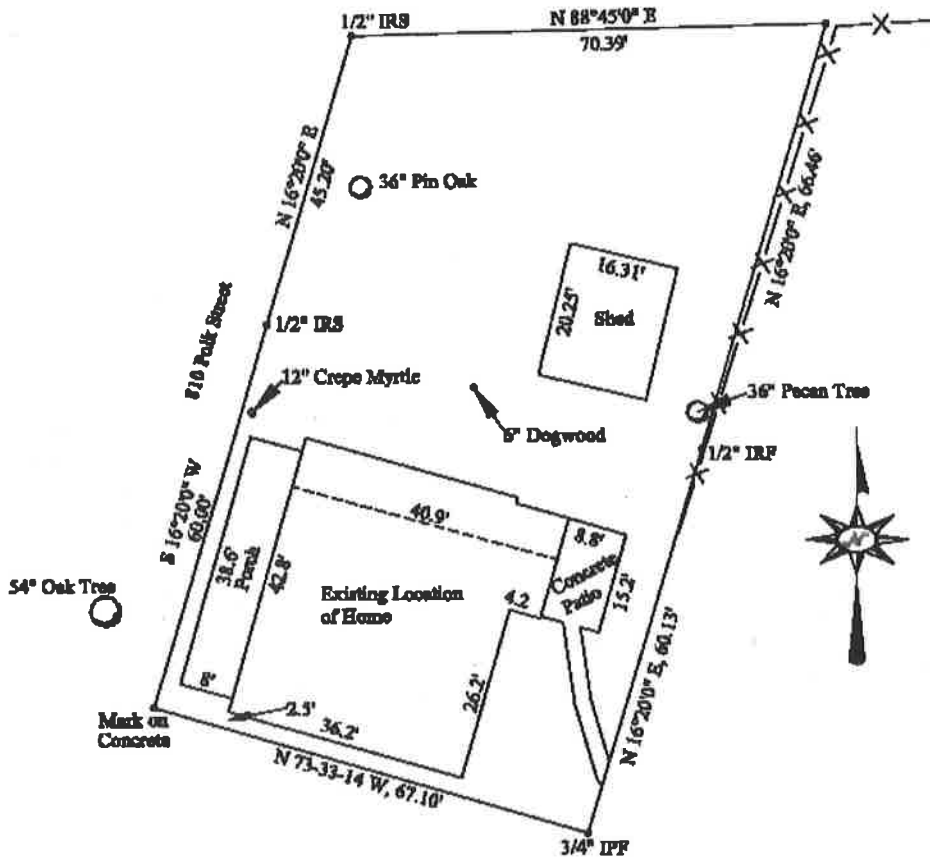


Figure 1

PROPOSED DUNCAN HOUSE MOVE

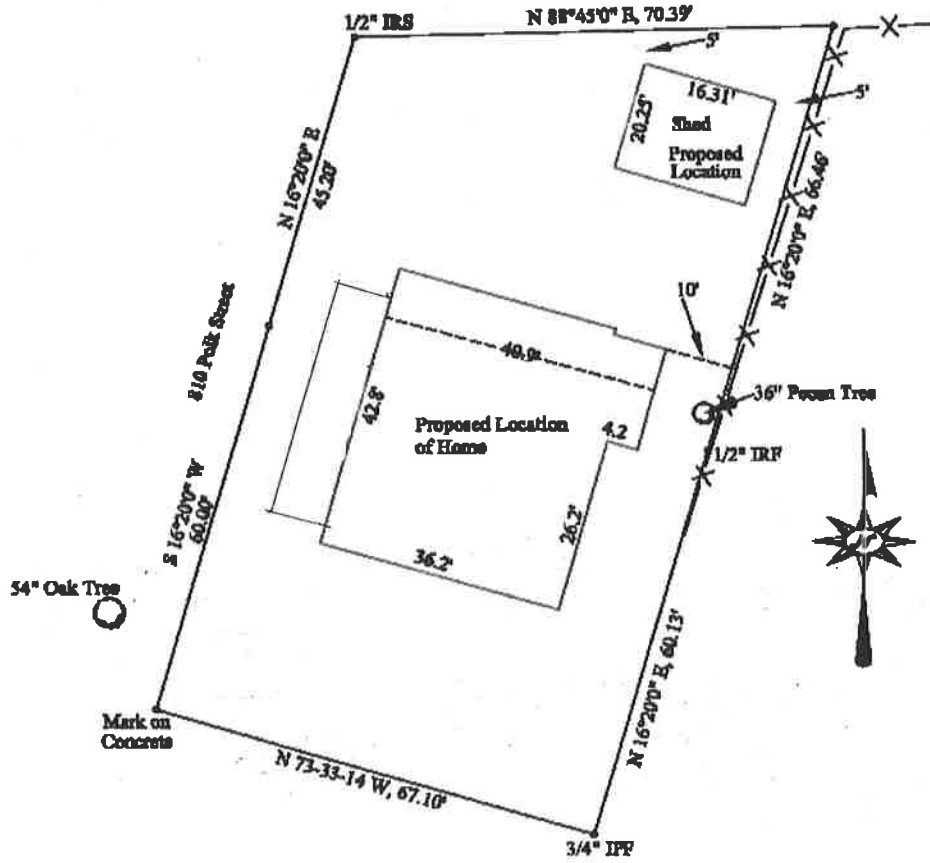


Figure 2



810

Historical marker text and images







National Register of Historic Places

Note to the record

Additional Documentation: 2016

degrees 40 minutes East 67.1 feet; thence run North 16 degrees 20 minutes East 66.468 feet; thence run South 88 degrees 45 minutes West 70.389 feet to the point of beginning.

New Acreage

0.42 acres, approximately

New Latitude and Longitude Reference

WG 84

Latitude: 34.937932 Longitude: -88.520924

See Continuation Sheet

Photographs

Kenneth P'Pool, Deputy State Historic Preservation Officer, took the following photographs of the Duncan House in the new location on October 12, 2015.

Photograph 0001	Duncan House, Camera facing East
Photograph 0002	Duncan House, Camera facing East
Photograph 0003	Duncan House, Camera facing Northeast
Photograph 0004	Duncan House, Camera facing South

Summary

The State Historic Preservation Office and the Owners request that the Keeper issue final approval of the move and that the Duncan House remain listed on the National Register of Historic Places.

Sincerely,


Kenneth H. P'Pool
Deputy State Historic Preservation Officer

Cc: Mr. Kenneth Williams

United States Department of the Interior
National Park Service

National Register of Historic Places
Continuation Sheet

Duncan House
Name of Property
Alcorn County, Mississippi
County and State
Seige and Battle of Corinth
Name of multiple listing (if applicable)

Section number 10 Page 1











UNITED STATES DEPARTMENT OF THE INTERIOR
NATIONAL PARK SERVICE

NATIONAL REGISTER OF HISTORIC PLACES
EVALUATION/RETURN SHEET

REQUESTED ACTION: ADDITIONAL DOCUMENTATION

*(Move Approved)
within District*

PROPERTY NAME: Midtown Corinth Historic District

MULTIPLE NAME:

STATE & COUNTY: MISSISSIPPI, Alcorn

DATE RECEIVED: 12/04/15 DATE OF PENDING LIST:
DATE OF 16TH DAY: DATE OF 45TH DAY: 1/19/16
DATE OF WEEKLY LIST:

REFERENCE NUMBER: 93001433

NOMINATOR: STATE

REASONS FOR REVIEW:

APPEAL: N DATA PROBLEM: N LANDSCAPE: N LESS THAN 50 YEARS: N
OTHER: N PDIL: N PERIOD: N PROGRAM UNAPPROVED: N
REQUEST: Y SAMPLE: N SLR DRAFT: N NATIONAL: N

COMMENT WAIVER: N

ACCEPT RETURN REJECT 1-8-2016 DATE

ABSTRACT/SUMMARY COMMENTS:

*Final Move Approved within District - AD re Floor C status of House
The House was moved within its historically associated lot
and keeping its original setback & orientation. Care was maintained
to utilize the original Pier materials, which complement the new
Foundation*

RECOM./CRITERIA

Accept ~~Additional~~ Documentation

REVIEWER

[Signature]

DISCIPLINE

TELEPHONE

DATE 1-8-2016

DOCUMENTATION see attached comments Y/ see attached SLR Y/

If a nomination is returned to the nominating authority, the nomination is no longer under consideration by the NPS.

National Register of Historic Places
Memo to File

Correspondence

The Correspondence consists of communications from (and possibly to) the nominating authority, notes from the staff of the National Register of Historic Places, and/or other material the National Register of Historic Places received associated with the property.

Correspondence may also include information from other sources, drafts of the nomination, letters of support or objection, memorandums, and ephemera which document the efforts to recognize the property.

UNITED STATES DEPARTMENT OF THE INTERIOR
NATIONAL PARK SERVICE

NATIONAL REGISTER OF HISTORIC PLACES
EVALUATION/RETURN SHEET

REQUESTED ACTION: NOMINATION

PROPERTY NAME: Midtown Corinth Historic District

MULTIPLE NAME:

STATE & COUNTY: MISSISSIPPI, Alcorn

DATE RECEIVED: 11/15/93 DATE OF PENDING LIST: 11/30/93
DATE OF 16TH DAY: 12/16/93 DATE OF 45TH DAY: 12/30/93
DATE OF WEEKLY LIST:

REFERENCE NUMBER: 93001433

NOMINATOR: STATE

REASONS FOR REVIEW:

APPEAL: N DATA PROBLEM: N LANDSCAPE: N LESS THAN 50 YEARS: N
OTHER: N PDIL: N PERIOD: N PROGRAM UNAPPROVED: N
REQUEST: N SAMPLE: N SLR DRAFT: NATIONAL: N

COMMENT WAIVER: N

ACCEPT RETURN REJECT 12/23/93 DATE Entered in the
National Register

ABSTRACT/SUMMARY COMMENTS:

RECOM./CRITERIA _____
REVIEWER _____
DISCIPLINE _____
DATE _____

DOCUMENTATION see attached comments Y/N see attached SLR Y/N

CLASSIFICATION

count resource type

STATE/FEDERAL AGENCY CERTIFICATION

FUNCTION

historic current

DESCRIPTION

architectural classification
 materials
 descriptive text

SIGNIFICANCE

Period Areas of Significance--Check and justify below

Specific dates Builder/Architect
Statement of Significance (in one paragraph)

summary paragraph
 completeness
 clarity
 applicable criteria
 justification of areas checked
 relating significance to the resource
 context
 relationship of integrity to significance
 justification of exception
 other

BIBLIOGRAPHY

GEOGRAPHICAL DATA

acreage verbal boundary description
 UTM's boundary justification

ACCOMPANYING DOCUMENTATION/PRESENTATION

sketch maps USGS maps photographs presentation

OTHER COMMENTS

Questions concerning this nomination may be directed to

_____ Phone _____

Signed _____ Date _____



UNITED STATES POSTAL SERVICE
475 L'ENFANT PLAZA SW
WASHINGTON DC 20260

August 12, 1993

Mr. Kenneth H. P'Pool
Deputy SHPO
Mississippi Department of Archives
and History
Historic Preservation Division
Post Office Box 571
Jackson, MS 39205-0571

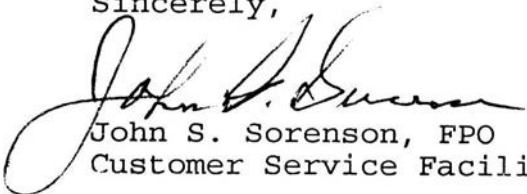
Dear Mr. P'Pool:

This is in response to your recent letter concerning the proposed nomination of the Corinth Post Office as part of the Midtown Corinth Historic District.

As Federal Preservation Officer for the U.S. Postal Service, I concur with this action. Kindly notify me if this nomination is accepted so our files can be properly adjusted.

Call me at 202 268-3107 if you have any questions.

Sincerely,


John S. Sorenson, FPO
Customer Service Facilities



Mississippi Department of Archives and History

Historic Preservation Division • Post Office Box 571 • Jackson, Mississippi 39205-0571
Telephone 601-359-6940

November 8, 1993

Ms. Carol D. Shull
Chief of Registration
National Register of Historic Places
Interagency Resources Division
National Park Service
P.O. Box 37127
Code 710
Washington, DC 20013-7127

RECEIVED

NOV 15 1993

NATIONAL
REGISTER

Dear Ms. Shull:

We are pleased to submit the nomination form, maps, and photographs for the Midtown Corinth Historic District in Corinth, Alcorn County, Mississippi. This property was approved for nomination by the Mississippi Historic Preservation Professional Review Board at its meeting on September 16, 1993.

Also enclosed is a copy of the letter received from John S. Sorenson, the Federal Preservation Officer of the U.S. Postal Service, in which he concurred with the inclusion of the U.S. Post Office within this district.

We trust that you will find the enclosed materials in order and will let us hear from you at your convenience.

Sincerely,

Kenneth H. P'Pool
Deputy State Historic
Preservation Officer

brc

Enclosures



HISTORIC PRESERVATION
Jim Woodrick, director
PO Box 571, Jackson, MS 39205-0571
601-576-6940 • Fax 601-576-6955
mdah.state.ms.us



October 28, 2014

Mr. James Gabbert
Historian, National Register of Historic Places
1201 Eye Street NW
Washington, D. C. 20005

Re: Midtown Historic District (810 Polk Street), Alcorn County, Mississippi

Dear Mr. Gabbert:

The owner of a contributing resource in the Midtown Historic District approached us about moving the house a short distance on the lot associated with the house. At some point after the district was listed, a neighbor built a non-historic addition which is only about four feet from the subject property. The owner is concerned that the proximity increases the risk of a casualty loss to his house.

The move would not change the district boundaries, the resource count or the period of significance. The owner is requesting approval for the move while maintaining the National Register listing.

Please let us know if the attached materials provide you with sufficient information to approve the move. If you need any additional information, please let me know.

Very truly yours,

William M. Gatlin
National Register Coordinator

CC: Kenneth Williams

Enclosures



HISTORIC PRESERVATION

Jim Woodrick, director

PO Box 571, Jackson, MS 39205-0571

601-576-6940 • Fax 601-576-6955

mdah.state.ms.us

RECEIVED 2280

DEC 04 2015

Nat. Register of Historic Places
National Park Service

December 2, 2015

Mr. James Gabbert
Historian, National Register of Historic Places
National Park Service
1849 C Street NW
Washington, D.C. 20240

Re: Duncan House, Corinth, Alcorn County, Mississippi

93001433

Dear Mr. Gabbert:

The Duncan House was listed on the National Register of Historic Places on December 23, 1993. Since the district was listed in 1993, a two-story garage addition was constructed immediately south of the Duncan House, about four feet from the house. Due to the proximity of the non-historic addition, the owner was concerned about the potential for damage to the Duncan House. The owner proposed moving the house approximately 29 feet to the north, staying within the boundary of the city lot where the Duncan House is located. The owner filed for Approval to Move a Contributing Resource in the Midtown Historic District and the Keeper approved the Additional Documentation on November 21, 2014. The purpose of this letter is to complete the documentation regarding the move.

Date of Move

The Duncan House was moved beginning on July 29, 2015 and set on a new foundation on August 31, 2015. A noncontributing shed on the lot was also moved.

New Verbal Boundary Description

Legal Description

TRACT NO. 1: Commence at the Northeast Corner of Block 118 of Mitchell and Mask's Survey to the City of Corinth, Alcorn County, Mississippi; thence run South 16 degrees 20 minutes West along the West right of way line of Jackson Street 127.4 feet; thence run North 71 degrees 27 minutes West 133 feet for the point of beginning; thence run North 16 degrees 20 minutes East 10.3 feet; thence run North 73 degrees 40 minutes West 67.1 feet to the East right of way line of Polk Street; thence run South 16 degrees 20 minutes West along the East right of way line of Polk Street 60 feet; thence run South 73 degrees 40 minutes East 67.1 feet; thence run North 16 degrees 20 minutes East 49.7 feet to the point of beginning. Being part of the property described in the deed from Frank Berry, II et ux to J.L. Aldridge et ux recorded in Deed Book 283, page 68.

TRACK NO. 2: Commence at the Northeast Corner of Block 118 of Mitchell and Mask's Survey to the City of Corinth, Alcorn County, Mississippi; Thence run South 16 degrees 20 minutes West along the West right of way line of Jackson Street 15.7 feet; thence run North 82 degrees 45 minutes West 79.5 feet; thence run South 88 degrees 45 minutes West 127.45 feet to the East right of way line of Polk Street for the point of beginning; thence run South 16 degrees 20 minutes West along the East right of way line of Polk Street 45.2 feet; thence run South 73