

UNITED STATES DEPARTMENT OF THE INTERIOR
NATIONAL PARK SERVICE

NATIONAL REGISTER OF HISTORIC PLACES
PROPERTY PHOTOGRAPH FORM

(Type all entries - attach to or enclose with photograph)

1. NAME		
COMMON	AND/OR HISTORIC	NUMERIC CODE (Assigned by NPS)
Head Tide Historic District		23/015
2. LOCATION		
STATE Maine	COUNTY Lincoln	TOWN Alna
STREET AND NUMBER		
Various		
3. PHOTO REFERENCE		
PHOTO CREDIT	DATE	NEGATIVE FILED AT
Earle G. Shettleworth, Jr.	February 3, 1974	Maine Historic Preservation Commission
4. IDENTIFICATION		
DESCRIBE VIEW, DIRECTION, ETC.		

General view of the Head Tide Historic District looking northeast





UNITED STATES DEPARTMENT OF THE INTERIOR
NATIONAL PARK SERVICENATIONAL REGISTER OF HISTORIC PLACES
PROPERTY PHOTOGRAPH FORM*(Type all entries - attach to or enclose with photograph)*

1. NAME

COMMON

Head Tide Historic District

AND/OR HISTORIC

NUMERIC CODE *(Assigned by NPS)*

23/015

NOV 19 1974

2. LOCATION

STATE

Maine

COUNTY

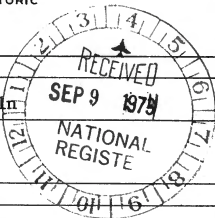
Lincoln

TOWN

Alna

STREET AND NUMBER

Various



3. PHOTO REFERENCE

PHOTO CREDIT

Earle G. Shettleworth, Jr.

DATE

February 3, 1974

NEGATIVE FILED AT

Maine Historic Preservation
Commission

4. IDENTIFICATION

DESCRIBE VIEW, DIRECTION, ETC.

#2,3,6,4 Looking northeast across the Sheepscot River with, from left to right, the Jewett Grain Store, the Clark House, the Rev. Jewett House, and the Jewett General Store.



UNITED STATES DEPARTMENT OF THE INTERIOR
NATIONAL PARK SERVICENATIONAL REGISTER OF HISTORIC PLACES
PROPERTY PHOTOGRAPH FORM*(Type all entries - attach to or enclose with photograph)*

1. NAME		
COMMON	AND/OR HISTORIC	NUMERIC CODE <i>(Assigned by NPS)</i>
Head Tide Historic District		23/015 NOV 19 1974
2. LOCATION		
STATE	COUNTY	TOWN
Maine	Lincoln	Alna
STREET AND NUMBER		
Various		
3. PHOTO REFERENCE		
PHOTO CREDIT	DATE	NEGATIVE FILED AT
Earle G. Shettleworth, Jr.	February 3, 1974	Maine Historic Preservation Commission
4. IDENTIFICATION		
DESCRIBE VIEW, DIRECTION, ETC.		

#3 Northeast view of the Captain Clark House



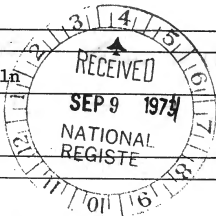


UNITED STATES DEPARTMENT OF THE INTERIOR
NATIONAL PARK SERVICE

NATIONAL REGISTER OF HISTORIC PLACES
PROPERTY PHOTOGRAPH FORM

(Type all entries - attach to or enclose with photograph)

1. NAME		
COMMON Head Tide Historic District	AND/OR HISTORIC	NUMERIC CODE (Assigned by NPS) 23/015
2. LOCATION		
STATE Maine	COUNTY Lincoln	TOWN Alna
STREET AND NUMBER Various		
3. PHOTO REFERENCE		
PHOTO CREDIT Earle G. Shettleworth, Jr.	DATE February 3, 1974	NEGATIVE FILED AT Maine Historic Preservation Commission
4. IDENTIFICATION		
DESCRIBE VIEW, DIRECTION, ETC.		



NOV 19 1974

#5,4,2,3, Looking northwest with, from left to right, the Jewett Stable, the Jewett General Store, the Jewett Grain Store, and the Clark House.



The Old Head Tide Store

UNITED STATES DEPARTMENT OF THE INTERIOR
NATIONAL PARK SERVICE

NATIONAL REGISTER OF HISTORIC PLACES
PROPERTY PHOTOGRAPH FORM

(Type all entries - attach to or enclose with photograph)

1. NAME

COMMON	AND/OR HISTORIC	NUMERIC CODE (Assigned by NPS)
Head Tide Historic District		23/015 NOV 19 1974

2. LOCATION

STATE	COUNTY	TOWN
Maine	Lincoln	Alna

SHEET AND NUMBER

Various

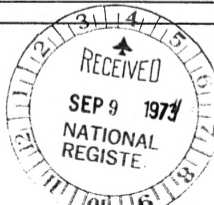
3. PHOTO REFERENCE

PHOTO CREDIT	DATE	NEGATIVE FILED AT
Earle G. Shettleworth, Jr.	February 3, 1974	Maine Historic Preservation Commission

4. IDENTIFICATION

DESCRIBE VIEW, DIRECTION, ETC.

#5,4, Southeast view of the Jewett Stable and Jewett General Store





UNITED STATES DEPARTMENT OF THE INTERIOR
NATIONAL PARK SERVICE

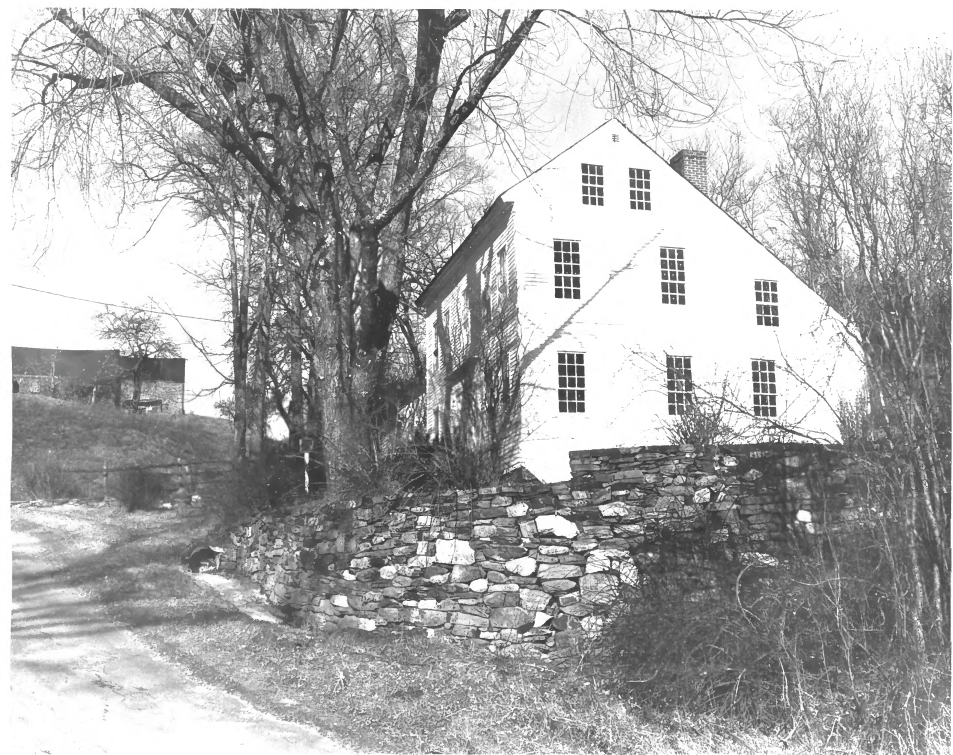
**NATIONAL REGISTER OF HISTORIC PLACES
PROPERTY PHOTOGRAPH FORM**

(Type all entries - attach to or enclose with photograph)

1. NAME		
COMMON	AND/OR HISTORIC	NUMERIC CODE <i>(Assigned by NPS)</i>
Head Tide Historic District		23/015 NOV 19 1974
2. LOCATION		
STATE	COUNTY	TOWN
Maine	Lincoln	Alna
STREET AND NUMBER		
Various		
3. PHOTO REFERENCE		
PHOTO CREDIT	DATE	NEGATIVE FILED AT
Earle G. Shettleworth, Jr.	February 3, 1974	Maine Historic Preservation Commission
4. IDENTIFICATION		
DESCRIBE VIEW, DIRECTION, ETC.		

#6 Northeast view of the Rev. Jeremiah Jewett House





UNITED STATES DEPARTMENT OF THE INTERIOR
NATIONAL PARK SERVICE

NATIONAL REGISTER OF HISTORIC PLACES
PROPERTY PHOTOGRAPH FORM

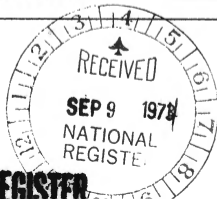
(Type all entries - attach to or enclose with photograph)

1. NAME		
COMMON	AND/OR HISTORIC	NUMERIC CODE (Assigned by NPS)
Head Tide Historic District		23/015
2. LOCATION		
STATE	COUNTY	TOWN
Maine	Lincoln	Alna
STREET AND NUMBER		
Various		
3. PHOTO REFERENCE		
PHOTO CREDIT	DATE	NEGATIVE FILED AT
Earle G. Shettleworth, Jr.	February 3, 1974	Maine Historic Preservation Commission

4. IDENTIFICATION

DESCRIBE VIEW, DIRECTION, ETC.

#7 Northeast view of the Ward Lewis House



PROPERTY OF THE NATIONAL REGISTER



UNITED STATES DEPARTMENT OF THE INTERIOR
NATIONAL PARK SERVICE

NATIONAL REGISTER OF HISTORIC PLACES
PROPERTY PHOTOGRAPH FORM

(Type all entries - attach to or enclose with photograph)

1. NAME

COMMON	AND/OR HISTORIC	NUMERIC CODE (Assigned by NPS)
Head Tide Historic District		23/015

NOV 19 1974

2. LOCATION

STATE	COUNTY	TOWN
Maine	Lincoln	Alna

STREET AND NUMBER

Various

3. PHOTO REFERENCE

PHOTO CREDIT	DATE	NEGATIVE FILED AT
Earle G. Shettleworth, Jr.	February 3, 1974	Maine Historic Preservation Commission

4. IDENTIFICATION

DESCRIBE VIEW, DIRECTION, ETC.

#7 Facade or east view of the Ward Lewis House





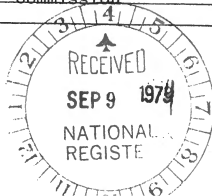
UNITED STATES DEPARTMENT OF THE INTERIOR
NATIONAL PARK SERVICE

NATIONAL REGISTER OF HISTORIC PLACES
PROPERTY PHOTOGRAPH FORM

(Type all entries - attach to or enclose with photograph)

1. NAME		
COMMON	AND/OR HISTORIC	NUMERIC CODE (Assigned by NPS)
Head Tide Historic District		23/015 NOV 19 1974
2. LOCATION		
STATE	COUNTY	TOWN
Maine	Lincoln	Alna
STREET AND NUMBER		
Various		
3. PHOTO REFERENCE		
PHOTO CREDIT	DATE	NEGATIVE FILED AT
Earle G. Shettleworth, Jr.	February 3, 1974	Maine Historic Preservation Commission
4. IDENTIFICATION		
DESCRIBE VIEW, DIRECTION, ETC.		

#8 Facade on northeast view of the Robinson House





UNITED STATES DEPARTMENT OF THE INTERIOR
NATIONAL PARK SERVICE

NATIONAL REGISTER OF HISTORIC PLACES
PROPERTY PHOTOGRAPH FORM

(Type all entries - attach to or enclose with photograph)

1. NAME		
COMMON	AND/OR HISTORIC	NUMERIC CODE (Assigned by NPS)
Head Tide Historic District		23/015 NOV 19 1974
2. LOCATION		
STATE	COUNTY	TOWN
Maine	Lincoln	Alna
STREET AND NUMBER		
Various		
3. PHOTO REFERENCE		
PHOTO CREDIT	DATE	NEGATIVE FILED AT
Earle G. Shettleworth, Jr.	February 3, 1974	Maine Historic Preservation Commission
4. IDENTIFICATION		
DESCRIBE VIEW, DIRECTION, ETC.		

#9 Facade or southwest view of the Turner House





UNITED STATES DEPARTMENT OF THE INTERIOR
NATIONAL PARK SERVICE

NATIONAL REGISTER OF HISTORIC PLACES
PROPERTY PHOTOGRAPH FORM

(Type all entries - attach to or enclose with photograph)

1. NAME		
COMMON	AND/OR HISTORIC	NUMERIC CODE (Assigned by NPS)
Head Tide Historic District		23/015
2. LOCATION		
STATE	COUNTY	TOWN
Maine	Lincoln	Alna
STREET AND NUMBER		
Various		
3. PHOTO REFERENCE		
PHOTO CREDIT	DATE	NEGATIVE FILED AT
Earle G. Shettleworth, Jr.	February 3, 1974	Maine Historic Preservation Commission

NOV 19 1974

4. IDENTIFICATION

DESCRIBE VIEW, DIRECTION, ETC.

#12 Northwest view of the Schoolhouse



#6 of 12 photos



UNITED STATES DEPARTMENT OF THE INTERIOR
NATIONAL PARK SERVICE

NATIONAL REGISTER OF HISTORIC PLACES
PROPERTY PHOTOGRAPH FORM

(Type all entries - attach to or enclose with photograph)

1. NAME		
COMMON	AND/OR HISTORIC	NUMERIC CODE (Assigned by NPS)
Head Tide Historic District		23/015 NOV 19 1974
2. LOCATION		
STATE	COUNTY	TOWN
Maine	Lincoln	Alna
STREET AND NUMBER		
Various		
3. PHOTO REFERENCE		
PHOTO CREDIT	DATE	NEGATIVE FILED AT
Earle G. Shettleworth, Jr.	February 3, 1974	Maine Historic Preservation Commission
4. IDENTIFICATION		
DESCRIBE VIEW, DIRECTION, ETC.		

#13 Northwest view of the Head Tide Church

PROPERTY OF THE NATIONAL REGISTER

