

United States Department of the Interior  
National Park Service

4194

# National Register of Historic Places Registration Form

This form is for use in nominating or requesting determinations for individual properties and districts. See instructions in National Register Bulletin, *How to Complete the National Register of Historic Places Registration Form*. If any item does not apply to the property being documented, enter "N/A" for "not applicable." For functions, architectural classification, materials, and areas of significance, enter only categories and subcategories from the instructions.



### 1. Name of Property

Historic name: East Side Fire Station and Branch Library

Other names/site number: \_\_\_\_\_

Name of related multiple property listing: \_\_\_\_\_

(Enter "N/A" if property is not part of a multiple property listing)

### 2. Location

Street & number: 600 E. 7<sup>th</sup> Street

City or town: Sioux Falls State: SD County: Minnehaha

Not For Publication:  Vicinity:

### 3. State/Federal Agency Certification

As the designated authority under the National Historic Preservation Act, as amended, I hereby certify that this  nomination  request for determination of eligibility meets the documentation standards for registering properties in the National Register of Historic Places and meets the procedural and professional requirements set forth in 36 CFR Part 60.

In my opinion, the property  meets  does not meet the National Register Criteria. I recommend that this property be considered significant at the following level(s) of significance:

national  statewide  local

Applicable National Register Criteria:

A  B  C  D

<u>Jay D. Vogt</u>	<u>05-22-2019</u>
Signature of certifying official/Title:	Date
<u>SD SHPD</u>	
State or Federal agency/bureau or Tribal Government	

In my opinion, the property \_\_\_ meets \_\_\_ does not meet the National Register criteria.

_____	_____
Signature of commenting official:	Date
_____	
Title :	State or Federal agency/bureau or Tribal Government

East Side Fire Station and Branch Library  
Name of Property

Minnehaha Co., SD  
County and State

**4. National Park Service Certification**

I hereby certify that this property is:

- entered in the National Register
- determined eligible for the National Register
- determined not eligible for the National Register
- removed from the National Register
- other (explain): \_\_\_\_\_

*[Handwritten Signature]*  
Signature of the Keeper

*6/26/77*  
Date of Action

**5. Classification**

**Ownership of Property**

(Check as many boxes as apply.)

- Private:
- Public – Local:
- Public – State:
- Public – Federal:

**Category of Property**

(Check only **one** box.)

- Building(s):
- District:
- Site:
- Structure:
- Object:

East Side Fire Station and Branch Library  
Name of Property

Minnehaha Co., SD  
County and State

**Number of Resources within Property**

(Do not include previously listed resources in the count)

Contributing	Noncontributing	
<u>1</u>	<u>0</u>	buildings
<u>0</u>	<u>0</u>	sites
<u>0</u>	<u>0</u>	structures
<u>0</u>	<u>0</u>	objects
<u>1</u>	<u>0</u>	<b>Total</b>

Number of contributing resources previously listed in the National Register n/a

---

**6. Function or Use**

**Historic Functions**

(Enter categories from instructions.)

GOVERNMENT: fire station

EDUCATION: library

EDUCATION: school

\_\_\_\_\_  
\_\_\_\_\_  
\_\_\_\_\_

**Current Functions**

(Enter categories from instructions.)

COMMERCE/TRADE: professional

\_\_\_\_\_  
\_\_\_\_\_  
\_\_\_\_\_  
\_\_\_\_\_  
\_\_\_\_\_

East Side Fire Station and Branch Library  
Name of Property

Minnehaha Co., SD  
County and State

---

## 7. Description

### Architectural Classification

(Enter categories from instructions.)

LATE 19TH AND EARLY 20TH CENTURY AMERICAN MOVEMENTS: Commercial Style

---

---

---

---

---

**Materials:** (enter categories from instructions.)

Principal exterior materials of the property: BRICK; STONE: Sioux quartzite

### Narrative Description

(Describe the historic and current physical appearance and condition of the property. Describe contributing and noncontributing resources if applicable. Begin with a **summary paragraph** that briefly describes the general characteristics of the property, such as its location, type, style, method of construction, setting, size, and significant features. Indicate whether the property has historic integrity.)

---

### Summary Paragraph

The East Side Fire Station and Branch Library is a rectangular commercial style building built in 1916. It is faced on all four sides with a light sand-colored brick and mortar. The brickwork includes some Craftsman detailing on the street facades and an approximately twenty-four-inch high masonry parapet cornice on all sides. The foundation course and all window sills are rough-faced purple/pink-colored Sioux quartzite stone. The brick detailing on the building's walls along with all window and door openings retain their historic integrity. Windows are a mix of three-over-two and one-over-one aluminum-clad wood frame sashes that were installed in 2019 during rehabilitation to replace glass-block and other infill sashes dating approximately to the 1970s with compatible substitutes that used the historic designs evidenced in photographs. The fire station section, the western part of the building, is two stories, with a one-story wing to the east that originally served as a branch library. The area of the fire station portion is roughly thirty-five feet by sixty feet. The branch library wing is set back from the fire station by about six inches on the south façade, so about thirty-four-and-a-half feet by forty-eight feet.

East Side Fire Station and Branch Library  
Name of Property

Minnehaha Co., SD  
County and State

The building sits on the southwest corner of a regular city block, the balance of which is a public park. Heritage Park is comprised mostly of open lawn and scattered mid-sized shade trees, but also includes an open basketball court and small playground. It is located in a transition zone between commercial/industrial development to the west and residential areas to the north and east.

The fire station interior retains the large vehicle bays with glazed brick wainscoting on its first floor and original wood trim in the upstairs hall and rooms. The library interior was altered in the 1970s to break the space into offices, with little historic material remaining to carry into the 2018-2019 rehabilitation.

Although there have been changes to the fenestration materials and the library interior, the majority of the East Side building's integrity of materials, workmanship, and design are intact to relay its significance to Sioux Falls' civic and educational history. It also has excellent integrity of location, setting, feeling, and association.

---

## **Narrative Description**

### *West Façade, Fire Station*

The west facade of the building includes two garage bays symmetrically placed and roughly forty-four inches apart, each with an approximately twelve-inch high vertical running bond detail outset above a metal lintel. Four large historic bollards protect the brickwork on either side of the garage door openings. The garage door openings are roughly twelve feet wide by fourteen feet tall. During the 2018-2019 rehabilitation, doors dating to about the 1950s were replaced with new folding doors to fill the opening. The doors are composed of four vertical panels with folding hinges and five lights (the top row further divided into two lights). Two large historic cast-iron ornamental lamps with globe lights are mounted, one in the center of each pilaster on the west facade, at the height of the top row of the garage bay doors.

The second floor features a large window opening approximately eighteen feet, six inches in width, spanned by a segmented arch with an approximately eighteen-inch rise; the arch itself is formed by a twelve-inch vertical running bond detailed in a manner similar to the lintels above the garage doors. The window opening has a row of three-over-two aluminum-clad wood windows installed in 2019 to replace glass-block and plywood infill from the 1970s. Immediately below the second-floor window is a quartzite signage panel with a smooth-finished surface roughly ninety-six inches by twenty inches with "EAST SIDE FIRE STATION" carved into it. The west facade parapet includes a peak that rises about twenty-four inches between the two pilasters.

Brick detailing on the west façade includes pilasters at both corners of the main building, each about four feet eight inches in width. The soldier courses above the garage doors feature eight-inch by sixteen-inch 'keystone' elements at their centers that are again outset from the soldier

East Side Fire Station and Branch Library  
Name of Property

Minnehaha Co., SD  
County and State

course. The soldier course above the second-story window opening has a more elaborate 'keystone' feature, consisting of two outset elements, each being roughly seven inches by sixteen inches, flanking a central element, roughly seven inches by twenty inches, that is further outset from the elements flanking it.

An outset rowlock runs even with the top of the second-floor window line. Outset brick in a running bond pattern eight inches wide immediately adjacent to the window openings ties the twelve-inch soldier course above the second-floor window opening to the rowlock.

The cornice along the west façade, typical for all four elevations, consists of an outset soldier course, secured at the corners by a conventional running bond eight inches in width. At the center of the west façade, immediately below the peak, a keystone-shaped feature roughly twelve inches in width, consisting of soldier course brick, is outset from this soldier course, and is flush with the course above it.

Above this soldier course is a farther outset frieze consisting of three courses of brick in a running bond. This frieze is topped by an outset rowlock that is flush with a row of headers above it. Above this, the wall reverts to a running bond placed directly against the load bearing block behind it. This running bond continues for about twenty-four inches to the top of the parapet, which is capped with precast concrete coping material.

The west elevation also includes a small, roughly one-and-a-half story stair tower that projects about six feet from the north façade of the main building. The west façade of the stair tower contains a door that accesses a stairwell to the second floor. This door is capped by a round-arched transom window. The door is a metal-framed door with large window, installed in 2019 to replace a non-historic steel door.

The brickwork detailing around this doorway includes roughly twelve-inch by seven-inch outset elements immediately above the spring line, an eight-inch running bond arch flush with the outset elements at the spring line, and a roughly eight-inch by twelve-inch keystone element that is further outset from the arch. This section features a cornice identical in design to the cornice on the building proper, but it is only topped by roughly eight inches of field brick before meeting the top of the parapet, which is also topped with precast concrete coping.

Approximately eight inches of the quartzite foundation is exposed along the stair tower and roughly the outer twenty-four inches of the pilaster on the south corner of the west façade. This quartzite has been dressed into rectangular blocks, and the upper edge of these blocks has been faceted; the rest of the block face is rough-hewn.

#### *North Elevation, Fire Station*

Along the north elevation, the stair tower has a stepped roof line. At the west end of the elevation is the stair tower referenced above. The overall length of the stair tower is about twenty-eight feet; roughly nine feet of the stair tower is at the elevation seen on the west façade; from that

East Side Fire Station and Branch Library  
Name of Property

Minnehaha Co., SD  
County and State

point, the stair tower rises roughly six feet. The cornice detailing seen elsewhere is repeated here, however the area of field brick above the cornice is roughly fifteen inches, as opposed to the eight inches seen on the lower section of the stair tower, and the twenty-four inches seen on the building itself. As elsewhere, the parapet is capped with precast concrete coping.

The north elevation of the building proper includes a pilaster at the west edge, outset, sized and detailed as on the west façade. The north façade also includes a chimney. The chimney, which is located just east of the stepped section of the stair tower, is outset from the north façade; however, the rowlock and cornice are carried over the outset chimney detail. The center of the north parapet is set about twelve inches lower, although it is still capped in precast concrete coping.

Both first and second floors have two window openings, all four of roughly the same width and height, each placed one above the other. The first-floor window openings are one-over-one, and the second-floor windows have a three-over-two glazing pattern. A fifth window opening on the north elevation is found on the second floor above the lower roof of the attached stair tower. It is roughly half the size of the other window openings and contains a single window with a three-over-two divided-light pattern.

There is also a single small (roughly two feet by three feet) window in the east façade of the stair tower. All along the north façade, roughly eight inches of foundation is exposed and detailed as on the west façade.

Windows on the fire station section are topped with soldier courses that extend eight inches into the field brick on either side of the openings. The rowlock from the west façade is carried through along the north façade.

#### *North Elevation, Branch Library*

The north elevation of the library wing includes seven smaller one-over-one windows, each in its own opening; the windows are grouped into a set of five to the east and a pair to the west. In each grouping, the windows are placed about twelve inches apart; the center of the east grouping is about nineteen feet from the eastern edge of the north façade, and the center of the western group is about six feet from the western edge of the single-story branch library wing. All of the window openings are about five feet by three feet. The cornice detailing seen elsewhere is continued here, with roughly sixteen inches of field brick between the top of the cornice and the precast concrete coping. Library windows along this elevation are topped with a soldier course that extends eight inches into the field brick on either side of the window grouping and is continuous above the group.

#### *East Elevation, Branch Library*

The east façade of the library wing includes six one-over-one windows the same size as in the north elevation. These windows are in two symmetric groups of three; the windows in each

East Side Fire Station and Branch Library  
Name of Property

Minnehaha Co., SD  
County and State

group are about eight inches apart, and the groups are roughly sixteen inches apart. These windows are topped with a soldier course detailed as on the north elevation. The cornice detailing here is as on the north elevation, as well as the dressed quartzite foundation. As elsewhere, the sills are rough-hewn quartzite with a dressed upper surface.

#### *East Elevation, Fire Station*

On the east elevation of the fire station, only the second floor is visible from the exterior, over the roof of the library wing. It contains two window openings with three-over-two sashes, the southern-most a double window, the center a single. A third opening to the north contains an exterior door with sidelight that replaced a pair of windows in 2018-2019 to facilitate roof access over the library portion of the building. All opening follow the window line established on the north façade. The rowlock, coping, and cornice details are continued from the north and south facades, but there are no pilasters on this façade and the parapet is flat all the way across.

#### *South Façade, Branch Library*

The south façade of the library wing consists of two groups of three one-over-one windows (installed 2019 to replace non-historic windows) centrally located on either side of an approximately fourteen-foot wide entry bay that projects about eighteen inches from the main body of the library wing. This projecting bay includes an eight-foot wide opening topped with a semicircular arch starting from a springline approximately ten feet above floor level.

Each group of windows on either side of the entry consists of two smaller windows that are the same size as the other windows in the branch library wing with a larger window with a tall transom between them. The larger windows are four feet wide and their sills are approximately three feet lower than the smaller windows to either side. The lintels of all three windows in the group are aligned. Windows in each grouping are placed roughly eight inches apart.

The parapet above the entry extends roughly five feet higher than the parapet on the rest of the library's south facade. Two large metal brackets which apparently supported an awning at one point are fixed to the spandrels on either side of the arched entrance, and a two-piece quartzite signage panel is set into the parapet with "BRANCH OF PUBLIC LIBRARY" carved into it. An extruded aluminum storefront system is fitted within the recessed arch at the entrance. It is believed to have been first infilled during 1970s renovations. Two courses of running bond brick are outset from the wall immediately below the spring line of the arch, and these outset courses are carried around the corners of the entry, terminating in the field brick of the south façade of the building proper. The signage panel, approximately eight feet in width and twenty inches in height, is located two courses below this outset course and centered in the entry façade. An additional two courses of field brick run between the signage panel and the bottom of the cornice, which is detailed as elsewhere. There is a small light fixture, not original to the building, centered on the entry immediately below the cornice. The cornice is topped by sixteen inches of field brick, as elsewhere on the branch library wing, and that topped with precast concrete coping

East Side Fire Station and Branch Library  
Name of Property

Minnehaha Co., SD  
County and State

as elsewhere on the building. The south façade of the branch library wing is set back about six inches from the south façade of the fire station.

### *South Façade, Fire Station*

The south façade of the fire station structure is divided into three bays by masonry pilasters. The center bay is roughly twice the width of the two end bays. As on the west façade, the parapet rises to a peak twenty-four inches above the adjacent roof line over this center bay. The pilasters on the south façade are roughly three feet in width.

The narrower bays on either end of the façade are roughly ten feet in width. These end bays each include single windows—one-over-one on the first floor and three-over-two on the second floor. The center bay has a large window opening on the first-floor and four windows on the second floor that are slightly narrower than the windows in the end bays. The large window opening centered in the lower floor middle bay is roughly eleven feet by seven feet and features a triple set of one-over-one sash windows. The four windows in the middle bay of the second floor are roughly three-feet by six-feet and have a three-over-two pattern.

All windows are capped with outset soldier courses that extend eight inches into the adjacent field brick. The rowlock and cornice details are carried through this façade, and as elsewhere, the window sills are rough-hewn quartzite with a dressed upper surface. As on library's east façade, the quartzite foundation stones are exposed to a height of about eight inches and are dressed on their top and sides, with rough-hewn faces.

The top of the parapet on the fire station is thirty feet six inches above finish floor; finish floor of the second level is about fourteen feet six inches above the first floor. Second floor window openings extend between eighteen feet two inches and twenty-three feet ten inches above the fire station finish floor. The parapet of the library wing is seventeen feet eight inches above library finish floor, with the parapet of the library wing entrance at twenty-two feet four inches above library finish floor. The library finish floor is six inches above the fire station finish floor.

### *Interior—Basement, Fire Station*

The interior of the fire station consists of a partial basement with concrete floor and rubble-wall construction. It housed the building's boiler and fuel storage. The basement's finish floor is about nine feet below the finish floor of the first-floor, and the main floor's concrete slab is about one foot thick in this area. The basement is roughly twenty-two feet square and located at the northwest corner of the building. The stairwell to the basement is located immediately below the original stairwell to the second floor on the north side of the building.

### *Interior—First Floor, Fire Station*

The main floor of the fire station is dominated by the garage bay, which appears to have originally extended the full length of the building. At some point a kitchen and open staircase

East Side Fire Station and Branch Library  
Name of Property

Minnehaha Co., SD  
County and State

were added to the northeast corner of the building. The staircase is a self-supporting steel structure with concrete steps. It was replaced with a modern equivalent of compatible design meeting current codes. A doorway was cut between the fire station and the branch library wing in this area, likely when the building was remodeled to serve as the offices for the city's parks department. A restroom was also built out into the southeast corner of the garage area.

Walls in the garage area include a white porcelain-faced wainscot of tightly bonded brick extending to a height of about five feet, capped by a torus course of white porcelain faced brick; the base is a black glazed brick roughly eight inches square. Above the wainscot is conventional field brick of a medium tan to ochre color. The ceiling is unfinished, exposing the structural elements of the second floor and the second floor's diagonally placed tongue and groove subflooring; all of these structural components have been painted black. The second floor is supported by a steel beam that runs east to west across the middle of the building; dimensional lumber joists extend from there to the north and south walls supporting the second floor. The concrete floor has wall-to-wall carpeting installed during the 2018-2019 rehabilitation. Long neon light tubes with minimal casing and exposed ductwork have been suspended over the garage area during the rehabilitation.

#### *Interior—Second Floor, Fire Station*

The stairwell to the second floor on the north side of the building contains historic Craftsman-style oak detailing finished in a honey color. This color is typical of all woodwork on the second floor. In the stairwell, one-by-six dimensional oak planks roughly four feet six inches in height are placed vertically at roughly two-foot intervals along either side of the stairwell. An oak baseboard, roughly eight-inches high, extends along the toeline of the stairs. A wainscot appearance on either side of the stairwell is created by two runs of roughly eight-inch-wide oak planks that extend along the wall about three feet six inches and four feet six inches above and parallel to the toeline of the stairs, intersected with vertical planks that create a wide grid along the wall. Wood steps have a central carpet runner, walls are painted stucco over utility block and plaster and lath over wood studs.

The stairwell opens onto a corridor on the second floor that is roughly twenty-four feet long and about four feet six inches wide. This corridor is trimmed out with oak plank wainscot as in the stairwell. Three doors open off this corridor, one at either end and one about five feet in from the west end of the corridor. All three doors are topped with transoms. The doors are trimmed in oak and are five-panel veneer construction.

The westernmost door opens into a room that extends the width of the west façade of the building and is roughly sixteen feet from the doorway along its eastern wall to the west wall of the building. At an unknown date this room was subdivided into two smaller rooms to the north and south, with a door between them, but the partition was removed and the historic volume restored during the 2018-2019 rehabilitation. All of the second-floor window openings are trimmed in oak, in a style similar to the doors. Aluminum-finish pendant can lights have been installed in the room

East Side Fire Station and Branch Library  
Name of Property

Minnehaha Co., SD  
County and State

The doorway along the south wall of the corridor opens into a large room that encompasses the bulk of the second floor. The south part of the room is divided into offices with full-height glass walls and doors to preserve the visible volume of space. Historic cabinets were reused during the rehabilitation and installed along the north wall of the room. Just south of center in the west wall of this room is an original five-panel door with that leads to the west room.

A full-height glass door has also been installed to lead into a work room on the southeast corner of the fire station. This room is about sixteen feet from west wall to east wall and is about eleven feet from north wall to the south wall of the building.

Immediately north of this room, accessed from the main room of the second floor through a historic five-panel door, is a small bathroom with a raised floor. To the north of the bathroom, a small room has been converted into a stairwell communicating with the kitchen area on the main level. It is accessible both through the door at the east end of the corridor and through a door opening onto the main room of the second floor.

The ceiling in the corridor along the north side of the second floor is finished in plaster at its original height. The ceiling of the room opening onto the newer stairwell in the northeast corner of the fire station is also finished in plaster at its original height. Elsewhere, a dropped smooth-finish ceiling to accommodate HVAC equipment and can lighting has been installed in the center of the second-floor rooms.

The original baseboard, roughly eight-inch-high oak, remains in place on all historic partitions on the second floor, as does a picture rail located about eight feet above finish floor.

### *Interior, Branch Library*

After 1970s renovations, the branch library wing consisted of a number of small offices, none original to the building, accessed off an 'L' shaped corridor that connects the building's south entry to the opening cut into the party wall between the branch library wing and the fire station. Wood trim original to the branch library wing has been removed throughout, with the exception of window sills and jambs, which have been painted white. During the 2018-2019 rehabilitation, the library space was reconfigured with a walled office in the southwest corner, a small room in the northwest corner, and a conference room with full-height glass walls and doors along the east wall.

A non-historic aluminum-framed interior doorway with sidelight and transoms leads into the entry vestibule of the library wing, which has built-in brick benches on its east and west walls before the exterior enclosure.

The first-floor windows in both the branch library wing and the fire station are about eleven feet above the finish floor. The window line is about seven feet ten inches above finish floor on the second level.

East Side Fire Station and Branch Library  
Name of Property

Minnehaha Co., SD  
County and State

*Statement of Integrity*

The primary changes to the building include the replacement of fenestration except for some three-over-two windows on the second floor of the fire station portion of the building, and the changes to the interior of the library portion after its use changed in the 1970s. The 2018-2019 rehabilitation has undertaken to conserve existing historic features of the building while finding new windows compatible to the historic design and configuring interior space for office use. The building overall, retains sufficient integrity of design, materials, and workmanship, in addition to good integrity of location, setting, feeling, association to convey its historic significance to the civic and educational history of Sioux Falls.

East Side Fire Station and Branch Library  
Name of Property

Minnehaha Co., SD  
County and State

---

## 8. Statement of Significance

### Applicable National Register Criteria

(Mark "x" in one or more boxes for the criteria qualifying the property for National Register listing.)

- A. Property is associated with events that have made a significant contribution to the broad patterns of our history.
- B. Property is associated with the lives of persons significant in our past.
- C. Property embodies the distinctive characteristics of a type, period, or method of construction or represents the work of a master, or possesses high artistic values, or represents a significant and distinguishable entity whose components lack individual distinction.
- D. Property has yielded, or is likely to yield, information important in prehistory or history.

### Criteria Considerations

(Mark "x" in all the boxes that apply.)

- A. Owned by a religious institution or used for religious purposes
- B. Removed from its original location
- C. A birthplace or grave
- D. A cemetery
- E. A reconstructed building, object, or structure
- F. A commemorative property.
- G. Less than 50 years old or achieving significance within the past 50 years

East Side Fire Station and Branch Library  
Name of Property

Minnehaha Co., SD  
County and State

**Areas of Significance**

(Enter categories from instructions.)

POLITICS/GOVERNMENT

EDUCATION

\_\_\_\_\_  
\_\_\_\_\_  
\_\_\_\_\_

**Period of Significance**

1916-1969

\_\_\_\_\_  
\_\_\_\_\_

**Significant Dates**

1916

1918

1936

**Significant Person**

(Complete only if Criterion B is marked above.)

N/A

\_\_\_\_\_  
\_\_\_\_\_

**Cultural Affiliation**

N/A

\_\_\_\_\_  
\_\_\_\_\_

**Architect/Builder**

Joseph Schwarz (architect)

Gray Construction Co. (builder)

\_\_\_\_\_

East Side Fire Station and Branch Library  
Name of Property

Minnehaha Co., SD  
County and State

**Statement of Significance Summary Paragraph** (Provide a summary paragraph that includes level of significance, applicable criteria, justification for the period of significance, and any applicable criteria considerations.)

The East Side Fire Station and Branch Library is locally significant and eligible for the National Register of Historic Places under Criterion A under the areas of Politics/Government and Education. It is associated with the growth of Sioux Falls during the first half of the twentieth century, including that city's expansion of municipal services to satellite locations in the early twentieth century—a comparatively unique occurrence in South Dakota. At that time most cities and towns in the state could be adequately served by a central fire station and library. The East Side Fire Station was the first branch station built for the city's relatively new professional fire department and served a growing residential area on the east side of the city, across the Big Sioux River from the Central Station. It was the first city station designed for motorized equipment. The library wing similarly housed the first branch of that institution for the city. The library and the nursery school that subsequently occupied the wing represent historically significant elements of educational development in Sioux Falls in the early twentieth century. The historic fabric of the building's exterior is remarkably well-preserved, including quartzite panels that identify the structure's original uses as a fire station and branch library.

The fire station and library building sits on the southwest corner of a block bounded by Weber and Nesmith Avenues to the west and east respectively, and by 6th and 7th Streets to the north and south. At the time of construction, the balance of the block was occupied by an abandoned stone quarry. In 1917, the city acquired the quarry and converted it into Library Park, now called Heritage Park.<sup>1</sup> There have been significant alterations to the park over time, but the overall footprint of the park remains the same. The park is currently comprised of mostly open grass with scattered trees as well as a basketball court and small playground. The fire station occupies the larger portion of a rectangular parcel, which includes a concrete apron on the west and a smaller asphalt apron to the east. The north and south sides of the lot are planted in grass, with some mature trees on the south side of the lot and along the 7th Street frontage as well. The period of significance includes the construction of the building through its use as a fire station, library, and nursery school, to 1969, the fifty-year guidance suggested by the National Register of Historic Places program. In 1974, the city closed the fire station and converted the whole building for parks department offices.

---

**Narrative Statement of Significance** (Provide at least **one** paragraph for each area of significance.)

The East Side Fire Station and Branch Library was designed by prominent Sioux Falls architect Joseph Schwarz for the City of Sioux Falls in 1916. Gray Construction Co. of Watertown was hired to construct the building. The building was to be comprised of a two-story fire station and a one-story library wing on the eastern part of the structure. Plans called for the second floor of

---

<sup>1</sup> Gary D. Olson and Erik L. Olson, *Sioux Falls, South Dakota: A Pictorial History* (Norfolk VA: The Donning Company, 1985), 104.

East Side Fire Station and Branch Library  
Name of Property

Minnehaha Co., SD  
County and State

the fire station portion to include a dormitory, living room, office, storage room, bath, and toilet, while the library portion would include a library and a women's rest room (lounge/meeting room).<sup>2</sup> In 1918, the finishing work of the building was completed, and it was opened for occupancy.<sup>3</sup>



*Daily Argus Leader* (Sioux Falls, SD), September 27, 1916.

The western section was used as a fire station from 1916 until approximately 1974, when a renovation project converted the entire building to office and shop space for the city's parks department. The eastern section was used as a branch library from 1918 to 1935, after which the space was made available for a nursery school operated by the Federal Emergency Relief Administration and successor agencies through at least 1945.<sup>4</sup> From that point until 1974, the branch library section was made available for use by community organizations, and as a polling place.<sup>5</sup> This structure was owned by the city until 2018, when it was sold to a private investment group for redevelopment into commercial office space.<sup>6</sup>

The East Side Fire Station and Branch Library are nominated under Criterion A due to their role in the early development of civic and educational services in the growing city of Sioux Falls. A 1916 article discussing the planning for this building indicates that this growth was a primary motivation: "For some time the proposition for an east side fire station has been under discussion, the rapid growth of the east side making it necessary to have fire protection on that

<sup>2</sup> "Proposed East Side Fire Station, Public Library and Women's Rest Room," *Daily Argus-Leader* (Sioux Falls, SD), September 27, 1916.

<sup>3</sup> "East Side Boosters Elect New Officers," *Daily Argus-Leader* (Sioux Falls, SD), January 9, 1918.

<sup>4</sup> *Polk's Sioux Falls City Directory*. Omaha: R.L. Polk and Co., 1910-1945.

<sup>5</sup> *Argus-Leader* (Sioux Falls, SD), October 28, 1948-January 26, 1965.

<sup>6</sup> Joe Sneve, "Sioux Falls selling former fire station at 7th and Weber," *Argus Leader* (Sioux Falls, SD), January 16, 2018.

East Side Fire Station and Branch Library

Name of Property

Minnehaha Co., SD

County and State

side of the river.”<sup>7</sup> Sioux Falls grew more rapidly, by percentage, from 1910 to 1920 than in any other decade except the first full decade of the city’s existence (1880-1890).<sup>8</sup> During this time, wholesale and manufacturing businesses boomed and residential development expanded in step.<sup>9</sup> The school district constructed six elementary schools and expanded the central high school during this decade. Electricity, water, and gas service were extended to all parts of the city. The City of Sioux Falls also expanded its transportation network by improving roads and experimenting with modern public transportation in the form of electric street car service available in the city center.<sup>10</sup> The city built the critical Eighth Street Bridge out of concrete in 1912, improving movement between parts of the city.<sup>11</sup>

During this period, the city’s residential neighborhoods grew steadily to the south, west and east. The East Side neighborhood was particularly noted for housing working-class families who were connected to growing manufacturing and wholesaling companies, especially the John Morrell meatpacking company located at Weber and Rice Streets.<sup>12</sup> At the time the East Side Fire Station was constructed, there were only three vehicle bridges across the Big Sioux, at 6<sup>th</sup>, 8<sup>th</sup>, and 10<sup>th</sup> Streets, and two of those were single-lane bridges. The 1910 census recorded 2,143 individuals living east of the river; by 1920 that number had grown to 4,838. The increase in residential population east of the river is also illustrated by sheets of the Sanborn Fire Insurance Company maps from 1908 and 1916, which cover roughly the same area centered on the intersection of 6<sup>th</sup> Street and Cliff Avenue. The 1908 map shows approximately forty-five individual dwellings, but by 1916, that number had increased to about ninety-three.<sup>13</sup> Before construction of a second fire station, fire engines were dispatched from a station located at 9<sup>th</sup> Street and Minnesota Avenue, over a mile from the intersection of 6<sup>th</sup> Street and Cliff Avenue, and this at a time when horse-drawn fire-fighting equipment was still the standard. Access to the east side became a critical concern for the city’s fire department. Even a moderate amount of traffic in the downtown area would impact the department’s response time from the central station located on the western edge of the downtown district.

Throughout the period of significance, the branch library portion of the building served a variety of additional civic and educational needs of the city’s East Side. For roughly the first twenty years of the building’s existence, the eastern wing of the building served as a branch library. The building’s use as a library is reflected by the high placement of window sills along the east and north elevations to accommodate the placement of stacks along these walls. When the city consolidated its library collections at the downtown Carnegie Free Library location in 1935, the library portion of this building was available for use as a nursery school operated under the

<sup>7</sup> *Daily Argus Leader* (Sioux Falls, SD), September 27, 1916.

<sup>8</sup> United States Census Bureau. *Census of Population and Housing - Publications - U.S. Census Bureau*. November 15, 2018. <https://www.census.gov/prod/www/decennial.html>.

<sup>9</sup> Olson and Olson, *Sioux Falls, South Dakota*, 73.

<sup>10</sup> Olson and Olson, *Sioux Falls, South Dakota*, 75-76; Charles A. Smith, *A Comprehensive History of Minnehaha County, South Dakota* (Mitchell SD: Educator Supply Co., 1949), 144.

<sup>11</sup> Olson and Olson, *Sioux Falls, South Dakota*, 98.

<sup>12</sup> *Ibid.*, 130.

<sup>13</sup> Sanborn Map Company, *Sioux Falls, Minnehaha County, South Dakota* (New York: Sanborn Map Company, 1908), sheet 26; and (1916), sheet 29.

East Side Fire Station and Branch Library

Name of Property

Minnehaha Co., SD

County and State

oversight of the Federal government as part of the New Deal. City directories indicate that this building was used as a nursery school from 1936 to at least 1945.<sup>14</sup> From 1946 until the renovation of the entire building in 1974, the branch library space was made available to a number of community organizations for use as a meeting space. At least as early as 1919, the fire station was used as a polling place.<sup>15</sup> In the 1920s, children's hygiene clinics were held at the East Side station building, as well as the Irving School.<sup>16</sup> It was apparently used for years by the East Side Community Club.<sup>17</sup> In 1945, it was one of the collection points in a citywide drive to send clothes to war-torn Europe.<sup>18</sup> It was also used into the 1940s-60s periodically by the English-Scotch Club, the Girl Scouts, the Firemen's Auxiliary, and the Red Cross.<sup>19</sup>

For decades, the East Side Fire Station and Library served as a public building that provided for critical civic and educational needs in expanding areas of the city and provided space for the community to gather, socialize, and work for the public good.

### **Fire-fighting in Sioux Falls**

Sioux Falls' first "bucket brigade" was formed with the incorporation of the city in 1877.<sup>20</sup> A hook-and-ladder team was established in 1880 and acquired its first steam engine in 1881.<sup>21</sup> In 1898, the city had five hose units, one hook-and-ladder unit, and one chemical unit.<sup>22</sup> It was a largely effective volunteer operation until the Cataract Hotel fire in 1900. Although no lives were lost, the fire completely destroyed the city's largest hotel—a landmark structure that was also used as the starting point for the city's street numbering system. The city's fire department was professionalized in the aftermath. On August 6, 1900, under the guidance of the new mayor George W. Burnside, the city passed an ordinance creating a paid fire department with a chief and two companies of men, and the department was housed in the city auditorium building.<sup>23</sup> According to historian Gary D. Olson, "Burnside, a great proponent of the fire department, worked to make it the best in the region during his twenty-six years in office."<sup>24</sup> The city's first fire station, the large Central Station at 9<sup>th</sup> and Minnesota, was completed in 1913 and occupied in 1914.<sup>25</sup> It was built as an Italianate Revival structure with a tall bell tower, executed in

---

<sup>14</sup> *Polk's Sioux Falls City Directory*. Omaha: R.L. Polk and Co., 1910-1945.

<sup>15</sup> *Argus-Leader* (Sioux Falls, SD), October 25, 1919-December 9, 1962.

<sup>16</sup> *Argus-Leader* (Sioux Falls, SD), December 30, 1921-February 3, 1922.

<sup>17</sup> *Argus-Leader* (Sioux Falls, SD), March 19, 1935-January 26, 1964.

<sup>18</sup> *Argus-Leader* (Sioux Falls, SD), April 8, 1945.

<sup>19</sup> *Argus-Leader* (Sioux Falls, SD), January 14, 1943-November 7, 1959.

<sup>20</sup> R.E. Bragstad, *Sioux Falls in Retrospect* (Garretson, SD: Sanders Printing Co., 1967), 29; Olson and Olson, *Sioux Falls, South Dakota*, 25, 33.

<sup>21</sup> Bragstad, *Sioux Falls in Retrospect*, 29.

<sup>22</sup> *Ibid*, 30.

<sup>23</sup> Smith, *A Comprehensive History*, 181-182; Bragstad, *Sioux Falls in Retrospect*, 30-34; Olson and Olson, *Sioux Falls, South Dakota*, 77, 81.

<sup>24</sup> Olson and Olson, *Sioux Falls, South Dakota*, 79.

<sup>25</sup> Smith, *A Comprehensive History*, 182-183.

East Side Fire Station and Branch Library  
Name of Property

Minnehaha Co., SD  
County and State

quartzite stone and designed to accommodate horse-drawn fire-fighting equipment, including a tanker unit that has been carefully restored and remains with the fire department.<sup>26</sup>

Motorized fire-fighting equipment was being manufactured in the United States as early as 1906, by the Knox Automobile Company in Springfield, Massachusetts.<sup>27</sup> Their model, a pump truck with ladders and storage racks for additional fire-fighting equipment, is instantly recognizable as a forerunner of modern fire engines.<sup>28</sup> Within ten years, several companies had begun offering ladder and pumper trucks, including Mack Trucks, Seagrave, American LaFrance, and Ahrens & Fox, all of which remain in the business in one form or another today. Sioux Falls purchased its first motorized fire-fighting equipment from the Seagrave company in 1915, ending their use of horses completely in 1917, and from then onwards to the 1960s, bought equipment from the American LaFrance company of Elmira, N.Y.<sup>29</sup>

The East Side Fire Station, the city's second station, was designed in 1916 with motorized fire-fighting equipment in mind.<sup>30</sup> The garage bays are smaller than those of the Central Station, which had originally included horse stalls.<sup>31</sup> As with the Central Station, residential space was provided above the garage, and a fire pole provided rapid access from the residential level to the vehicle bays.

A third station, the South Side Fire Station, was later constructed in 1931 at the northeast corner of 22<sup>nd</sup> Street and Minnesota Avenue, south of downtown.<sup>32</sup> In the 1920s and 1930s, residential development had extended south of downtown in neighborhoods like McKennan Park and Pendar Lane. The South Side station is a one-story brick building detailed with a Spanish-Mediterranean-style roof of red tile and brackets. Although at least for a time there was a city fire unit at the airfield northwest of town, these three stations served most of the city until two new stations were built in 1963, and they survived the intervening years largely intact, representing changing thought and practice in early firefighting and station design in Sioux Falls.<sup>33</sup>

## Libraries in Sioux Falls

The Sioux Falls Library Association was chartered by the Dakota Territorial Legislature in 1886; however, the city's library was not funded until 1899. The city's library collection was originally housed in the former All Souls Church at the corner of 12<sup>th</sup> Street and Dakota Ave.,

---

<sup>26</sup> National Register of Historic Places, Central Fire Station, Sioux Falls, Minnehaha County, South Dakota (1980), National Register Information System #80003730; Sioux Falls Fire and Rescue. Department History - City of Sioux Falls. n.d. <http://www.siouxfalls.org/fire/our-history> (accessed November 19, 2018).

<sup>27</sup> Albert Mroz, *American Cars, Trucks and Motorcycles of World War I* (Jefferson, NC: McFarland, 2010), 199.

<sup>28</sup> "Springfield's New Motor Fire Car." *The Horseless Age* 18(16) (October 17, 1906), 478.

<sup>29</sup> Bragstad, *Sioux Falls in Retrospect*, 34; Olson and Olson, *Sioux Falls, South Dakota*, 81.

<sup>30</sup> Sioux Falls Fire and Rescue. Department History.

<sup>31</sup> NRHP, Central Fire Station (1980).

<sup>32</sup> National Register of Historic Places, South Side Fire Station, Sioux Falls, Minnehaha County, South Dakota (1984), National Register Information System #84003369.

<sup>33</sup> Bragstad, *Sioux Falls in Retrospect*, 32; *Argus-Leader* (Sioux Falls, SD), February 22, 1948.

East Side Fire Station and Branch Library  
Name of Property

Minnehaha Co., SD  
County and State

donated for that purpose by W.H. and Wynonna Lyon. The city's first library building was constructed in 1903 with a \$30,000 donation through Andrew Carnegie's library program. It was located at the corner of 10<sup>th</sup> Street and Dakota Avenue.<sup>34</sup> The structure remains standing and largely intact, and, now called Carnegie Town Hall, it is currently used by the city for public meetings.<sup>35</sup>

To serve the growing population of the East Side, the city first established a branch library on the east side of the Big Sioux River in the F. J. Watson drug store at 6<sup>th</sup> Street and Weber Avenue, later moving to Turner's drug store at 6<sup>th</sup> Street and Franklin Avenue. The branch library's collection was moved into the East Side Fire Station and Branch Library after its completion in 1918.<sup>36</sup> The city maintained this branch library until 1935, when its collection was reconsolidated with the main library on 10<sup>th</sup> Street.

In 1973, the entire library moved to a new structure on the north side of 8<sup>th</sup> Street between Main and Dakota Avenues.<sup>37</sup> This structure functioned as the city's only library until 1988, when the city again constructed a branch library along 49<sup>th</sup> Street near Sertoma Park in southwest Sioux Falls. Additional branch libraries followed in 1995 (49<sup>th</sup> Street and Southeastern Avenue), 2005 (3<sup>rd</sup> Street and Bahnsen Avenue), and 2013 (in Memorial Park, on 26<sup>th</sup> Street near Sertoma Avenue). The city's central library downtown was remodeled and expanded in 2010.<sup>38</sup>

### **The FERA/WPA Nursery Program**

After the city closed the East Side branch library in 1935, the space was used for a nursery school operated first under the Federal Emergency Recovery Administration (FERA). After that agency was dissolved, it was overseen by the Works Progress Administration (WPA). During World War II, the nursery school was transferred to the War Department. The nursery school was in operation until at least 1945, based on Polk City Directory listings.<sup>39</sup> This nursery school was staffed by employees of the federal government and was not affiliated with the Sioux Falls school district.

Forerunners of the nursery school movement can be traced to the nineteenth century; however, it was not until the period immediately after World War I that a coordinated effort began in both the United States and in England to formalize and standardize the structure, curricula, and age groups assigned to nursery schools. These schools were not initially intended to serve every young child. Rather, the goal was to provide a measure of structure, healthy food, and play-

---

<sup>34</sup> Siouxland Libraries. History - City of Sioux Falls. n.d. <http://www.siouxfalls.org/library/about-us/history> (accessed November 19, 2018); Olson and Olson, *Sioux Falls, South Dakota*, 38.

<sup>35</sup> National Register of Historic Places, Carnegie Free Library, Sioux Falls, Minnehaha County, South Dakota (1973), National Register Information System #73001750.

<sup>36</sup> "Public Library Had Modest Start," *Argus-Leader* (Sioux Falls, SD), March 30, 1927; *Polk's Sioux Falls City Directory*. Omaha: R.L. Polk and Co., 1910-1945.

<sup>37</sup> Olson and Olson, *Sioux Falls, South Dakota*, 175.

<sup>38</sup> Siouxland Libraries. History - City of Sioux Falls.

<sup>39</sup> *Polk's Sioux Falls City Directory*. Omaha: R.L. Polk and Co., 1910-1945.

East Side Fire Station and Branch Library  
Name of Property

Minnehaha Co., SD  
County and State

based instruction to children whose parents could not afford to do so.<sup>40</sup> Today's Head Start programs are the direct descendants of the nursery school movement.

In England, the movement was led by Grace Owen as well as U.S.-born Margaret McMillan.<sup>41</sup> In the United States, the foremost advocates of a standardized nursery school program in the late 1910s to the 1930s were Harriet Merrill Johnson, Lucy Sprague Mitchell and Caroline Pratt. The trio operated a model nursery school in New York City as part of the Bureau of Educational Experiments, periodically publishing the reports of their research as practical guides for establishment of similar schools elsewhere in the United States.<sup>42</sup>

The Nursery Project was part of the First New Deal. The program was authorized in 1933 and placed under the supervision of the Emergency Relief Administration, with additional oversight by the Office of Education, then a part of the Department of Interior. The schools were dubbed 'Emergency Nursery Schools.' In the program's administrative mandate, published on July 2, 1934, Harry Hopkins specified that these schools were "to develop the physical and mental well-being of preschool children in needy unemployed families or neglected or underprivileged homes."<sup>43</sup>

The program was also to "assist parents in meeting the nutritional, physical and social needs of their children," and "set up an environment and daily program appropriate for preschool children as a demonstration for schools, homes and welfare agencies."<sup>44</sup> School employees, both teachers and support staff, were to be relief-eligible individuals. These initiatives would be continued while the nursery schools were under FERA and WPA oversight.

In support of a mission more expansive than simply classroom education, nursery schools were also staffed by pediatricians or nurses, and, where possible, psychologists, nutritionists, and 'parental education workers'—who were assigned to help "interpret the school to the home." Other government publications touted success stories from the program.<sup>45</sup> Physical exercise was encouraged; schools were required to have both grass and hard-surfaced play areas. Students were also to be inspected each morning for indications of communicable disease.<sup>46</sup> Schools were provided sample menus for breakfast, lunch, and supper, with one publication noting, "Children coming to these schools will frequently be underfed."<sup>47</sup> Administrators also provided guides for

<sup>40</sup> Grace Arlington Owen, *Nursery School Education* (London: Methuen, 1920), 11-24.

<sup>41</sup> Owen, *Nursery School Education*, 11-24; Margaret McMillan, *The Nursery School* (London: J. M. Dent & Sons, 1919); Betty Liebovich, "The MacMillan Sisters, the Roots of the Open-Nursery, and Breaking the Cycle of Poverty," *Social and Education History* 7(1) (2018), 78-96.

<sup>42</sup> Harriet Merrill Johnson, and Carmen Sylva Reuben. *A Nursery School Experiment, Descriptive Report*. New York: Bureau of Educational Experiments, 1922).

<sup>43</sup> *Emergency Nursery Schools During the Second Year 1934-1935* (Washington, D.C.: The National Advisory Committee on Emergency Nursery Schools, 1935), 16.

<sup>44</sup> *Emergency Nursery Schools*, 16-18.

<sup>45</sup> Works Progress Administration, New Jersey, *Report of the Division of Women's and Professional Projects for the period ending July 31, 1936* (Newark, NJ: Works Progress Administration, 1936), 659, 660.

<sup>46</sup> *Bulletin of Information for WPA Nursery Schools* (Washington, D.C.: U.S. National Advisory Committee on WPA Nursery Schools, n.d.), 13.

<sup>47</sup> *Bulletin of Information for WPA Nursery Schools*, 19.

East Side Fire Station and Branch Library  
Name of Property

Minnehaha Co., SD  
County and State

instruction to both preschoolers and their parents, such as *Songs and Finger Plays to be used in the W.P.A. Nursery School and Parent Education Program of the Oregon State Department of Education*, published in January 1937.<sup>48</sup>

In 1935, after its first full year of operation, South Dakota had established twenty-five Emergency Nursery Schools.<sup>49</sup> Nationally, after the program's first year in operation, over 64,000 students had been enrolled at over 2,900 schools.<sup>50</sup> The program was largely superseded by the Community Facilities Act of 1940, which expanded the government-run nursery schools into daycares that were available not only to the unemployed, but also to those employed by various defense industries.<sup>51</sup>

## Summary

As a fire station, this building served Sioux Falls residents continuously for nearly six decades. Additionally, the building served Sioux Falls residents as a library, as a nursery school during the New Deal and World War II, and after that as a community meeting place, frequently used by clubs and other civic organizations. It was a key focal point for East Side community activity during the period of significance from 1916 to 1969.

Criterion A requires that buildings be “associated with events that have made a significant contribution to the broad patterns of our history.” The East Side Fire Station and Branch Library preserves a record of the growth of Sioux Falls and is eligible for the National Register of Historic Places under Criterion A in the areas of Politics/Government and Education. Its historically-intact fabric provides evidence of the building's importance in providing multiple important civic and educational services to East Side residents.

---

<sup>48</sup> Works Progress Administration, *Songs and Finger Plays to be used in the W.P.A. Nursery School and Parent Education Program of the Oregon State Department of Education* (January 1937), in Oregon State Library, Salem, accessed online: <https://digital.osl.state.or.us/islandora/object/osl:78988>.

<sup>49</sup> *Emergency Nursery Schools*, 21.

<sup>50</sup> Grace Langdon, “The Facts about Emergency Nursery Schools,” *Childhood Education* 11(6) (1935), 255-258.

<sup>51</sup> Betsey Stevenson, “An Experiment in Universal Child Care in the United States: Lessons from the Lanham Act,” (January 22, 2015), accessed online (November 19, 2018): <https://obamawhitehouse.archives.gov/blog/2015/01/22/experiment-universal-child-care-united-states-lessons-lanham-act>.

East Side Fire Station and Branch Library  
Name of Property

Minnehaha Co., SD  
County and State

---

## 9. Major Bibliographical References

**Bibliography** (Cite the books, articles, and other sources used in preparing this form.)

*Argus-Leader* (Sioux Falls, SD), September 27, 1916-January 26, 1965; January 26, 2018.

Bragstad, R.E. *Sioux Falls in Retrospect*. Garretson, SD: Sanders Printing Co., 1967.

*Bulletin of Information for WPA Nursery Schools*. Washington, D.C.: U.S. National Advisory Committee on WPA Nursery Schools, n.d.

*Emergency Nursery Schools During the Second Year 1934-1935*. Washington, D.C.: The National Advisory Committee on Emergency Nursery Schools, 1935.

*History of Southeastern Dakota*. Sioux City, Iowa: Western Publishing Company, 1881.

Johnson, Harriet Merrill, and Carmen Sylva Reuben. *A Nursery School Experiment, Descriptive Report*. New York: Bureau of Educational Experiments, 1922.

Langdon, Grace. "The Facts about Emergency Nursery Schools." *Childhood Education* 11(6) (1935), 255-258.

Liebovich, Betty. "The MacMillan Sisters, the Roots of the Open-Nursery, and Breaking the Cycle of Poverty." *Social and Education History* 7(1) (2018), 78-96.

McMillan, Margaret. *The Nursery School*. London: J. M. Dent & Sons, 1919.

Mroz, Albert. *American Cars, Trucks and Motorcycles of World War I*. Jefferson, NC: McFarland, 2010.

National Register of Historic Places, Carnegie Free Library, Sioux Falls, Minnehaha County, South Dakota (1973), National Register Information System #73001750.

National Register of Historic Places, Central Fire Station, Sioux Falls, Minnehaha County, South Dakota (1980), National Register Information System #80003730.

National Register of Historic Places, South Side Fire Station, Sioux Falls, Minnehaha County, South Dakota (1984), National Register Information System #84003369.

Odland, Rick D. *Sioux Falls*. Mount Pleasant, SC: Arcadia Publishing, 2007.

Olson, Gary D. and Erik L. Olson, *Sioux Falls, South Dakota: A Pictorial History*. Norfolk VA: The Donning Company, 1985.

Owen, Grace Arlington. *Nursery School Education*. London: Methuen, 1920.

*Polk's Sioux Falls City Directory*. Omaha: R.L. Polk and Co., 1910-1945.

East Side Fire Station and Branch Library  
Name of Property

Minnehaha Co., SD  
County and State

Sanborn Map Company. *Sioux Falls, Minnehaha County, South Dakota*. New York: Sanborn Map Company, 1908.

----- *Sioux Falls, Minnehaha County, South Dakota*. New York: Sanborn Map Company, 1916.

Sioux Falls Fire and Rescue. Department History - City of Sioux Falls. n.d.  
<http://www.siouxfalls.org/fire/our-history> (accessed November 19, 2018).

Siouxland Libraries. History - City of Sioux Falls. n.d.  
<http://www.siouxfalls.org/library/about-us/history> (accessed November 19, 2018).

Smith, Charles A. *A Comprehensive History of Minnehaha County, South Dakota*. Mitchell SD: Educator Supply Co., 1949.

*Songs and Finger Plays*. Works Progress Administration, Oregon; State Department of Education, Oregon, 1937.

“Springfield's New Motor Fire Car.” *The Horseless Age* 18(16) (October 17, 1906), 478.

Stevenson, Betsey. “An Experiment in Universal Child Care in the United States: Lessons from the Lanham Act.” January 22, 2015.  
<https://obamawhitehouse.archives.gov/blog/2015/01/22/experiment-universal-child-care-united-states-lessons-lanham-act> (accessed November 19, 2018).

United States Census Bureau. Census of Population and Housing - Publications - U.S. Census Bureau. November 15, 2018.  
<https://www.census.gov/prod/www/decennial.html>.

United States. Works Progress Administration. New Jersey. *Report of the Division of Women's and Professional Projects for the period ending July 31, 1936*. Newark, NJ: Works Progress Administration, 1936.

East Side Fire Station and Branch Library  
Name of Property

Minnehaha Co., SD  
County and State

---

**Previous documentation on file (NPS):**

- preliminary determination of individual listing (36 CFR 67) has been requested
- previously listed in the National Register
- previously determined eligible by the National Register
- designated a National Historic Landmark
- recorded by Historic American Buildings Survey # \_\_\_\_\_
- recorded by Historic American Engineering Record # \_\_\_\_\_
- recorded by Historic American Landscape Survey # \_\_\_\_\_

**Primary location of additional data:**

- State Historic Preservation Office
- Other State agency
- Federal agency
- Local government
- University
- Other  
Name of repository: South Dakota State Archives

**Historic Resources Survey Number (if assigned):** MH00000028

---

**10. Geographical Data**

**Acreage of Property:** 0.25 acres

Use either the UTM system or latitude/longitude coordinates

**Latitude/Longitude Coordinates**

Datum if other than WGS84: \_\_\_\_\_

(enter coordinates to 6 decimal places)

Latitude: \_\_\_\_\_ Longitude: \_\_\_\_\_

Latitude: \_\_\_\_\_ Longitude: \_\_\_\_\_

Latitude: \_\_\_\_\_ Longitude: \_\_\_\_\_

Latitude: \_\_\_\_\_ Longitude: \_\_\_\_\_

**Or**

East Side Fire Station and Branch Library  
Name of Property

Minnehaha Co., SD  
County and State

### UTM References

Datum (indicated on USGS map):

NAD 1927 or  NAD 1983

1. Zone: 14 Easting: 684190.5834 Northing: 4824444.7094

2. Zone: 14 Easting: 684241.7295 Northing: 4824445.6806

3. Zone: 14 Easting: 684243.1472 Northing: 4824425.6251

4. Zone: 14 Easting: 684191.5972 Northing: 4824423.5625

### Verbal Boundary Description (Describe the boundaries of the property.)

The nominated property consists of Lot 1, the south quarter of Lot 2 and the portion of the vacated alley adjacent all in Block 1, Dakota Improvement Co.'s 1st Addition to the City of Sioux Falls, Minnehaha County, South Dakota.

### Boundary Justification (Explain why the boundaries were selected.)

The nominated boundary includes the lot on which the East Side Fire Station and Branch Library sits and is directly associated with the history of the building.

---

### 11. Form Prepared By

name/title: Rich Jensen (SHPO review, Liz Almlie)  
organization: Dakota Preservation  
street & number: 1216 S Center Ave Apt 2  
city or town: Sioux Falls state: SD zip code: 57105  
e-mail: rjensen@altusinternet.com  
telephone: 605-360-8799  
date: November 20, 2018

---

### Additional Documentation

Submit the following items with the completed form:

- **Maps:** A **USGS map** or equivalent (7.5 or 15 minute series) indicating the property's location.

East Side Fire Station and Branch Library  
 Name of Property \_\_\_\_\_

Minnehaha Co., SD  
 County and State \_\_\_\_\_



East Side Fire Station and Branch Library  
 Name of Property \_\_\_\_\_

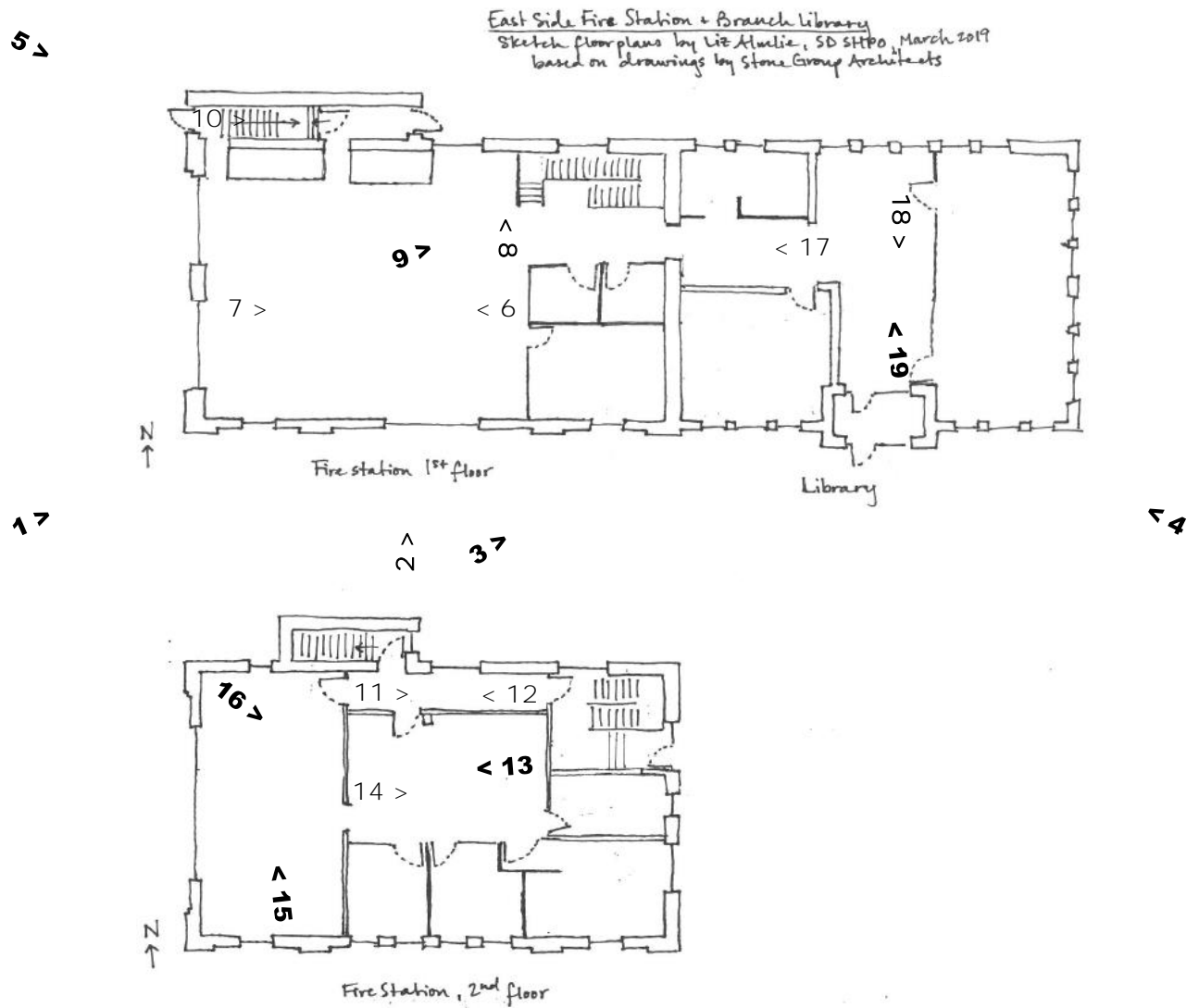
Minnehaha Co., SD  
 County and State \_\_\_\_\_



East Side Fire Station and Branch Library  
Name of Property

Minnehaha Co., SD  
County and State

- **Sketch map** for historic districts and properties having large acreage or numerous resources. Key all photographs to this map.



*Photographs keyed to map.*

- **Additional items:** (Check with the SHPO, TPO, or FPO for any additional items.)

East Side Fire Station and Branch Library  
Name of Property

Minnehaha Co., SD  
County and State

### **Photographs**

Submit clear and descriptive photographs. The size of each image must be 1600x1200 pixels (minimum), 3000x2000 preferred, at 300 ppi (pixels per inch) or larger. Key all photographs to the sketch map. Each photograph must be numbered and that number must correspond to the photograph number on the photo log. For simplicity, the name of the photographer, photo date, etc. may be listed once on the photograph log and doesn't need to be labeled on every photograph.

### **Photo Log**

Name of Property: East Side Fire Station and Branch Library

City or Vicinity: Sioux Falls

County: Minnehaha County

State: South Dakota

Photographer: Liz Almlie

Date Photographed: March 12, 2019 (unless otherwise specified)

Description of Photograph(s) and number, include description of view indicating direction of camera:

SD\_Minnehaha County\_East Side Fire Station Branch Library\_0001

View of west façade and south elevation, camera facing northeast.

SD\_Minnehaha County\_East Side Fire Station Branch Library\_0002

View of south façade of fire station portion, camera facing north.

SD\_Minnehaha County\_East Side Fire Station Branch Library\_0003

View of south façade of library portion, camera facing northeast.

SD\_Minnehaha County\_East Side Fire Station Branch Library\_0004

View of south and east elevations, camera facing northwest.

SD\_Minnehaha County\_East Side Fire Station Branch Library\_0005

View of north elevation and west façade, camera facing southeast.

SD\_Minnehaha County\_East Side Fire Station Branch Library\_0006

Interior view of former garage bay and doors, camera facing west.

SD\_Minnehaha County\_East Side Fire Station Branch Library\_0007

Interior view of former garage bay, camera facing east.

SD\_Minnehaha County\_East Side Fire Station Branch Library\_0008

Pre-rehabilitation detail of glazed brick wall in garage bay, camera facing north.

Date: January 3, 2018

East Side Fire Station and Branch Library  
Name of Property

Minnehaha Co., SD  
County and State

SD\_Minnehaha County\_East Side Fire Station Branch Library\_0009  
Interior view of garage bay and center stairs, camera facing northeast.

SD\_Minnehaha County\_East Side Fire Station Branch Library\_0010  
Interior view of north staircase well, camera facing east.

SD\_Minnehaha County\_East Side Fire Station Branch Library\_0011  
Interior view of second floor hall in fire station portion, camera facing east.  
Date: January 3, 2018

SD\_Minnehaha County\_East Side Fire Station Branch Library\_0012  
Interior view of second floor hall in fire station portion, camera facing west.

SD\_Minnehaha County\_East Side Fire Station Branch Library\_0013  
Interior view of large room on second floor, camera facing west.

SD\_Minnehaha County\_East Side Fire Station Branch Library\_0014  
Interior view of large room on second floor, camera facing east.

SD\_Minnehaha County\_East Side Fire Station Branch Library\_0015  
Interior view of west room on second floor, camera facing north.

SD\_Minnehaha County\_East Side Fire Station Branch Library\_0016  
Interior view of west room on second floor, camera facing southeast.

SD\_Minnehaha County\_East Side Fire Station Branch Library\_0017  
Interior view of connection between fire station and library portions, camera facing west.

SD\_Minnehaha County\_East Side Fire Station Branch Library\_0018  
Interior view of library portion, camera facing south.

SD\_Minnehaha County\_East Side Fire Station Branch Library\_0019  
Interior view of library portion, camera facing north.

**Paperwork Reduction Act Statement:** This information is being collected for applications to the National Register of Historic Places to nominate properties for listing or determine eligibility for listing, to list properties, and to amend existing listings. Response to this request is required to obtain a benefit in accordance with the National Historic Preservation Act, as amended (16 U.S.C.460 et seq.).

**Estimated Burden Statement:** Public reporting burden for this form is estimated to average 100 hours per response including time for reviewing instructions, gathering and maintaining data, and completing and reviewing the form. Direct comments regarding this burden estimate or any aspect of this form to the Office of Planning and Performance Management, U.S. Dept. of the Interior, 1849 C. Street, NW, Washington, DC.



EAST SIDE  
FIRE STATION









EAST SIDE  
FIRE STATION

GALL

52

GRAD

300-7128



EXIT

ACEY  
89 2747

Int  
Lib

HAND GENTLY

SEE WHIZ

Dink  
Lady

Wireless 2020





KEEP OFF STEPS







EXIT













EXIT

STAPLES  
100%  
RECYCLED

PACKAGING DEPT.  
KAPPA





UNITED STATES DEPARTMENT OF THE INTERIOR  
NATIONAL PARK SERVICE

NATIONAL REGISTER OF HISTORIC PLACES  
EVALUATION/RETURN SHEET

Requested Action: Nomination

Property Name: East Site Fire Station and Branch Library

Multiple Name: \_\_\_\_\_

State & County: SOUTH DAKOTA, Minnehaha

Date Received: 5/24/2019      Date of Pending List: 6/11/2019      Date of 16th Day: 6/26/2019      Date of 45th Day: 7/8/2019      Date of Weekly List: \_\_\_\_\_

Reference number: SG100004124

Nominator: SHPO

Reason For Review:

- |   |  |   |
|---|--|---|
| <input type="checkbox"/> Appeal           | <input checked="" type="checkbox"/> PDIL | <input type="checkbox"/> Text/Data Issue    |
| <input type="checkbox"/> SHPO Request     | <input type="checkbox"/> Landscape       | <input type="checkbox"/> Photo              |
| <input type="checkbox"/> Waiver           | <input type="checkbox"/> National        | <input type="checkbox"/> Map/Boundary       |
| <input type="checkbox"/> Resubmission     | <input type="checkbox"/> Mobile Resource | <input type="checkbox"/> Period             |
| <input checked="" type="checkbox"/> Other | <input type="checkbox"/> TCP             | <input type="checkbox"/> Less than 50 years |
|   | <input type="checkbox"/> CLG             |   |

Accept       Return       Reject      6/26/2019 Date

Abstract/Summary  
Comments: \_\_\_\_\_

Recommendation/  
Criteria \_\_\_\_\_

Reviewer Roger Reed  Discipline Historian

Telephone (202)354-2278 Date \_\_\_\_\_

DOCUMENTATION:    see attached comments : No    see attached SLR : No

If a nomination is returned to the nomination authority, the nomination is no longer under consideration by the National Park Service.

**THE HISTORIC PRESERVATION COMMISSION'S REPORT  
FOR EAST SIDE FIRE STATION & BRANCH LIBRARY NATIONAL REGISTER  
NOMINATION**

**NAME OF CLG:** Sioux Falls

**DATE SENT:** February 4, 2019

**DATE OF SDSHS BOARD MEETING:** April 25, 2019

**HISTORIC PRESERVATION COMMISSION**

Does the nomination meet the Criteria for Listing on the National Register of Historic Places? Yes X No \_\_\_\_\_

Has public comment been included? Yes X No \_\_\_\_\_ Explain:

THE REVIEW OF THE EAST SIDE FIRE STATION WAS DISCUSSED AT THE 2/13/19 MEETING. BOARD MEMBERS AND STAFF ARE SUPPORTIVE OF THE NOMINATION TO THE NATIONAL REGISTER OF HISTORIC PLACES.

Other recommendations: \_\_\_\_\_  
\_\_\_\_\_  
\_\_\_\_\_

Checklist:

X The Historic Preservation Commission has filled out the above Report.

P28 The Historic Preservation Commission has shared and transmitted the above comments to the Chief Elected Official. The Chief Elected Official will mail the above Historic Preservation Commission Report, along with the Chief Elected Official's Report, to the South Dakota State Historical Society, 900 Governors Drive, Pierre, SD 57501.

Signature of Chair: Rachael Meyers Date: 2/13/19

If the SHPO does not receive this report and recommendation within 60 calendar days, the SHPO will continue the nomination process.

(Questions about this form may be directed to Historic Preservation Specialist Liz Almlie at (605) 773-6056.)



23 May 2019

Keeper of National Register  
National Park Service  
National Register of Historic Places  
1849 C Street, NW, Mail Stop 7228  
Washington DC 20240



Dear Keeper:

The enclosed disks contain the true and correct copy of the nominations for the *Shady Lawn School No.8, Pierre American Legion Cabin, East Side Fire Station and Branch Library, and the Gale Buildings.*

In a separate action, the SHPO requests the delisting of the *Java Depot*, Walworth County, South Dakota, NRIS#01000640. This building has been demolished.

Please contact [chrisb.nelson@state.sd.us](mailto:chrisb.nelson@state.sd.us) with any questions.

Sincerely,

Chris B. Nelson  
Historic Preservation Specialist