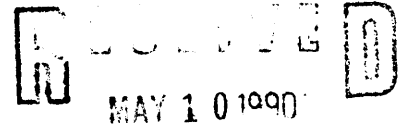


NPS Form 10-900  
(Rev. 8/86)  
NPS/CHS Word Processor Format  
(Approved 03/88)

OMB No. 1024-0018



United States Department of the Interior  
National Park Service

**NATIONAL REGISTER**

**NATIONAL REGISTER OF HISTORIC PLACES  
REGISTRATION FORM**

This form is for use in nominating or requesting determinations of eligibility for individual properties or districts. See instructions in *Guidelines for Completing National Register Forms* (National Register Bulletin 16). Complete each item by marking "x" in the appropriate box or by entering the requested information. If an item does not apply to the property being documented, enter "N/A" for "not applicable". For functions, styles, materials, and areas of significance, enter only the categories and subcategories listed in the instructions. For additional space use continuation sheets (Form 10-900a). Type all entries. Use letter quality printers in 12 pitch. Use only 25% or greater cotton content bond paper.

**1. Name of Property**

historic name: El Monte Hotel  
other names/site number: Monte Villa Inn

**2. Location**

street & number: 925 First Avenue (NA) not for publication  
city, town: Monte Vista (NA) vicinity  
state: Colorado code: CO county: Rio Grande code: zip code: 81144

**3. Classification**

Ownership of Property	Category of Property	No. of Resources within Property	
		contributing	noncontributing
(X) private	(X) building(s)	1	0
( ) public-local	( ) district		buildings
( ) public-State	( ) site		sites
( ) public-Federal	( ) structure		structures
	( ) object		objects
		1	0
Name of related multiple property listing:		No. of contributing resources previously listed in the National Register	
N/A		N/A	

**4. State/Federal Agency Certification**

As the designated authority under the National Historic Preservation Act of 1966, as amended, I hereby certify that this (x) nomination ( ) request for determination of eligibility meets the documentation standards for registering properties in the National Register of Historic Places and meets the procedural and professional requirements set forth in 36 CFR Part 60. In my opinion, the property (x) meets ( ) does not meet the National Register criteria.  
( ) See continuation sheet.

Barbara Sudler 5-2-90  
Signature of certifying official Date  
State Historic Preservation Officer, Colorado Historical Society  
State or Federal agency and bureau

In my opinion, the property ( ) meets ( ) does not meet the National Register criteria. ( ) See continuation sheet.

\_\_\_\_\_  
Signature of Commenting or Other Official Date  
\_\_\_\_\_  
State or Federal Agency and Bureau

**5. National Park Service Certification**

I, hereby, certify that this property is:

Entered in the  
National Register

- entered in the National Register.  
( ) See continuation sheet
- ( ) determined eligible for the National Register. ( ) See continuation sheet
- ( ) determined not eligible for the National Register.
- ( ) removed from the National Register.
- ( ) other, (explain:) \_\_\_\_\_

Helene Byer 6/7/90

\_\_\_\_\_  
Signature of the Keeper Date of Action

---

**6. Functions or Use**

---

**Historic Functions**

(enter categories from instructions)

Domestic: hotel  
\_\_\_\_\_  
\_\_\_\_\_**Current Functions**

(enter categories from instructions)

Domestic: hotel  
\_\_\_\_\_  
\_\_\_\_\_

---

**7. Description**

---

**Architectural Classification**

(enter categories from instructions)

Other: Pueblo  
\_\_\_\_\_  
\_\_\_\_\_**Materials**

(enter categories from instructions)

foundations Concretewalls brick, stucco  
\_\_\_\_\_roof Asphaltother \_\_\_\_\_  
\_\_\_\_\_

---

**Describe present and historic physical appearance.**

---

The El Monte Hotel is situated at the main entrance to downtown Monte Vista. The hotel faces south on First Avenue (US 160 and US 285) between Jefferson and Adams Streets. In choosing the site for Monte Vista's first modern hotel in 1930, the community leaders specifically chose "the old hotel site on First Avenue near the [train] depot"<sup>1</sup> because this location was nearest the town's business center and deemed the most advantageous for travelers passing through Monte Vista. The Simpson Hotel, which had occupied the site since 1887, was destroyed by fire in 1902.<sup>2</sup>

The El Monte Hotel is a three story Spanish style stucco and brick structure consisting of a central block flanked by two wings which protrude slightly forward of the main block and extend well behind it, creating the effect of a first floor rectangle and second and third floor U shaped blocks. (picture #2 and #4 and maps 1 - 4) The symmetrical appearance of the street facade is enhanced by the twenty pane casement windows on the second and third floors, and the six large storefront windows which flank the main entrance to the hotel.

The flat roofed one story stucco office and carport were added to the east side of the hotel in 1973.<sup>3</sup> (picture #3) Also added in 1973 was the enclosed exterior concrete block staircase on the northeast wing with the existing exterior northwest staircase being enclosed with matching concrete block. The flat roofed covered entry was added to connect the two staircases and serve as a rear entry.<sup>4</sup> (picture #4) The one story flat roofed brick banquet hall attached to the northwest wing of the hotel is original. (picture #4) The banquet hall was converted into a cocktail lounge in 1977.<sup>5</sup>

(X) See continuation sheet

United States Department of the Interior  
National Park Service

**NATIONAL REGISTER OF HISTORIC PLACES  
CONTINUATION SHEET**

Section number 7 Page 2

---

El Monte Hotel

---

The Spanish style architecture most evident in the hotel's street facade was specifically adopted by the community leaders to blend the traditional Southwest flavor of life in the San Luis Valley with the needs of the community for a thoroughly modern hotel.<sup>6</sup> Pueblo style decorative vigas originally extended from under the roof and over the first floor. The first floor vigas were removed in 1973.<sup>7</sup> The Spanish Colonial style sculptured roof line includes two heavily tiled small roofs extending over the street and a curvilinear gable with three arched openings centered on the roof.

Straight headed, Spanish style double casement windows with wooden lintels over the third story windows and wooden lintels over the first story storefront windows add to the Southwestern flavor of the hotel. Above the hotel's main entrance is an ornamental marquee made of projecting carved log ends held by decorative scroll ironwork.

INTERIOR

Entering the El Monte Hotel through the main entrance one passes through a small vestibule. (picture #5) This original vestibule consists of rough plaster walls with wide wooden cornices at the ceiling, a thin chair rail and wide simple baseboards at the floor. The floor is original terrazzo. A beautiful, original transom surmounts the two double French doors, which are divided by a single sidelight, marking the entrance to the El Monte Hotel lobby.

The structure of the El Monte Hotel lobby has not been altered as much as its use has changed. (pictures #6 and #7) Upon the completion of the new office and carport in 1973, the old lobby was transformed into a formal dining room. This area was enlarged by removing the old office and ladies bridge room which occupied the northeast corner of the original lobby.<sup>8</sup>

Upon entering the dining room there is a feeling of open spaciousness due to the pattern of its coffered ceiling and simple columns. Above the heart of the room lies the original stained glass Spanish design skylight, its traditional Southwest colors of brown, burgundy, black and white creating a stunning atrium effect felt throughout the room.

United States Department of the Interior  
National Park Service

**NATIONAL REGISTER OF HISTORIC PLACES  
CONTINUATION SHEET**

Section number 7 Page 3

El Monte Hotel

---

The design and materials of the vestibule continues through the dining room. Wooden cornices, chair rails and baseboards decorate the rough plaster walls. The floor is terrazzo. Also original are the mezzanine, the wood and wrought-iron staircase (picture #9) and the Otis elevator. (picture #10) Monte Vista's first automatic electric elevator was designed to carry up to twelve passengers and is still in use today.<sup>9</sup>

When the dining room was created in 1973, the owners wished to compliment the Spanish flavor of the hotel with nineteenth century American antiques.<sup>10</sup> The dining room is completely furnished with authentic period furniture. (picture #7) The original registration desk was replaced by a beautiful turn of the century solid oak bar, complete with mirrored breakfront.

Also contained on the first floor is the coffee shop, located in the southwest corner. Four of the five original storefront shops running the length of the street facade were combined in 1973 creating one large shop.<sup>11</sup> The original fifth shop located between the coffee shop and main entrance of the hotel was incorporated into the expanded coffee shop in 1977.<sup>12</sup> The kitchen is located behind the coffee shop and the banquet hall (cocktail lounge) occupies the northwest corner of the first floor. (Map #2)

Unique to the buildings of the 1930's in Monte Vista, the hotel included a large basement originally holding the boiler room, coal room and storage rooms.<sup>13</sup> Because of the high water table along the Rio Grande river, no commercial buildings downtown had basements at that time.<sup>14</sup>

The second and third floors of the Monte Villa Hotel originally contained 46 guest rooms, most with private bath.<sup>15</sup> During the 1973 remodeling 12 of the original rooms were combined to create six suites and private baths were put in all rooms.<sup>16</sup>

<sup>1</sup>"Actual Financing of the New Monte Vista Hotel Gets Fine Boost at Very Outset" Monte Vista Journal 14 February 1930 p.1.

<sup>2</sup>Riggenbach, Emma M. A Bridge to Yesterday (High Valley Press, Monte Vista, Colorado 1982) pp 62 - 63.

United States Department of the Interior  
National Park Service

**NATIONAL REGISTER OF HISTORIC PLACES  
CONTINUATION SHEET**

Section number 7 Page 4

El Monte Hotel

---

<sup>3</sup>Interview with V'Nora Jennings, Office Manager of Monte Villa Inn, from 1974 to present. 15 November 1989.

<sup>4</sup>Ibid.

<sup>5</sup>Ibid.

<sup>6</sup> "Work on Monte Vista's New Modern Hotel will be Underway Within Few Weeks and Rushed to Completion" Monte Vista Journal 27 June 1930, p. 1.

<sup>7</sup> Interview with V'Nora Jennings, Office Manager of Monte Villa Inn, From 1974 - present. 15 November 1989.

<sup>8</sup>Ibid.

<sup>9</sup> "Contracts Let for New Modern Hotel in Monte Vista and Work will Start at Once" Monte Vista Journal 11 July 1930, p.1.

<sup>10</sup> Interview with V'Nora Jennings, Office Manager of Monte Villa Inn, From 1974 - present. 15 November 1989.

<sup>11</sup> Ibid.

<sup>12</sup> Ibid.

<sup>13</sup> "Contracts Let for New Modern Hotel in Monte Vista and Work will Start at Once" Monte Vista Journal 11 July 1930, p.1.

<sup>14</sup> Interview with Peggy Barr, President, Monte Vista Historical Society, 5 January 1990.

<sup>15</sup> "Contracts Let for New Modern Hotel in Monte Vista and Work will Start at Once" Monte Vista Journal 11 July 1930, p.1.

<sup>16</sup> Interview with Peggy Barr, President, Monte Vista Historical Society, 5 January 1990.

---

**8. Statement of Significance**

---

Certifying official has considered the significance of this property in relation to other properties:      ( ) nationally      ( ) statewide      (X) locally

Applicable National Register Criteria      (X) A      ( ) B      (X) C      ( ) D  
Criteria Considerations (Exceptions)      ( ) A      ( ) B      ( ) C      ( ) D      ( ) E      ( ) F      ( ) G

**Areas of Significance**

(enter categories from instructions)

Architecture  
Social History

**Period of Significance**      **Significant Dates**

1930      1930  
1930 - 1940      \_\_\_\_\_

**Cultural Affiliation**

N/A

**Significant Person**

N/A

**Architect/Builder**

E. Floyd Redding - architect  
Dutton - Kendall - contractor

---

**State significance of property, and justify criteria, criteria considerations, and areas and periods of significance noted above.**

The El Monte Hotel meets Criterion C for its architectural significance because it represents a distinctive architectural style prevalent in hotel construction throughout the pre World War II Southwest. The intent was to build a "Fred Harvey" style hotel with all the modern conveniences, including Monte Vista's first elevator. The hotel is a good example of the Pueblo architectural style. The hotel also meets Criterion A for its social significance as the center for all the social and community events. For nearly sixty years the El Monte Hotel has been the center of the community, providing banquet facilities, wedding receptions, high school proms and civic club meeting facilities. Every generation has a special memory of the Monte Villa because of what the community achieved in 1930. The hotel is significant to the social history of Monte Vista.

While E. Floyd Redding may be best remembered as the "Son" who helped design the Hotel Boulderado, he gave just as much of himself to help the little town of Monte Vista realize its dream. The builder of the El Monte was Dutton - Kendall.

The historical significance of the Monte Villa Hotel is exceptional, especially when one considers how a small rural community constructed a \$112,000.00 modern hotel in 1930.

The ability of a small rural community to build a hotel through local subscription and raise over \$72,000.00 in one week in 1930 is extraordinary. The construction of the El Monte Hotel brought the townspeople together as no project has before or since. The El Monte Hotel, now the Monte Villa Inn, remains a symbol in the San Luis Valley of what can be achieved when people strive to enhance their community.

(x) See Continuation sheet

United States Department of the Interior  
National Park Service

**NATIONAL REGISTER OF HISTORIC PLACES  
CONTINUATION SHEET**

Section number 8 Page 2

El Monte Hotel

---

It had long been recognized that a new hotel was Monte Vista's most important need.<sup>1</sup> A hotel committee was comprised of representatives from all the local business and civic clubs, including the Monte Vista Commercial Club, the American Legion and Monte Vista's chapters of Rotary and Kiwanis.<sup>2</sup>

The committee contacted G.W. Sweigert of Hockenberry System, Harrisburg, Pennsylvania to survey the feasibility of a new hotel in Monte Vista. Hockenberry System specialized in putting together hotel building projects. By 1930 Hockenberry System had successfully organized 165 financial campaigns around the country to finance, build, and operate new hotels.<sup>3</sup> Upon completing his survey, Mr. Sweigert believed Monte Vista could easily accommodate a new hotel but the successful completion would depend on the town's commitment to the project.

The estimated construction cost for the new hotel was \$112,000.00. At least \$70,000.00 would need to be raised by public subscription with the balance mortgaged. The Monte Vista Hotel Company was formed and the week of March 3 - 10, 1930 was designated "Hotel Week". Every citizen would be solicited to buy as many \$100.00 shares in the company as possible that week.<sup>4</sup> By week's end the company had raised \$72,600.00.<sup>5</sup> "Hotel Week" was a success! Monte Vista would have its new hotel thanks to the people's commitment to a better life in Monte Vista.

The architectural significance of the El Monte Hotel lies in its south western design characterized by the stucco exterior, tile pent roofs, multipaned windows, wood lintels and vegas. The Southwestern style interior displays artistic craftsmanship seen in the heavy textured walls, wrought ironwork and stained glass skylight.

E. Floyd Redding of Denver was selected as the hotel's architect. He was described in the local papers of the time as "one of the best architects in Colorado"<sup>6</sup> and as a man who "has had wide experience in planning hotel buildings."<sup>7</sup> What we know of Redding today is unfortunately much more sketchy. He was born in Ashland, Oregon on December 28, 1882. He was educated at Buchtel College, Akron, Ohio. He joined his father's architecture firm in 1902.<sup>8</sup> His father, William Redding, was "known throughout the west as an authority on school buildings."<sup>9</sup> Together, William Redding and Son were the architects for the Hotel



United States Department of the Interior  
National Park Service

**NATIONAL REGISTER OF HISTORIC PLACES  
CONTINUATION SHEET**

Section number 8 Page 3

El Monte Hotel

Boulderado in Boulder, Colorado which was completed January 1, 1909 and listed on the National Register as a contributing building to the Downtown Boulder Historic District on December 3, 1980. Interestingly enough, Hotel Boulderado was also built through public subscription and contains a beautiful glass atrium lobby.<sup>10</sup> William Redding's firm was also the architect for Steinbagh's Hardware in Louisville, Colorado which was listed on the National Register on February 14, 1986.

In 1912 William Redding and Son moved their office to Denver. William Redding died in 1924 while working with his son on plans for the new Denver Opportunity School.<sup>11</sup> Floyd continued the family practice with offices in Denver's Tabor Building until 1935.<sup>12</sup>

In 1940, E. Floyd Redding became the district architect for the Forest Service, Department of Agriculture, covering seven states.<sup>13</sup> Sadly we hear no more of Floyd until his death in 1970 at the age of 88.<sup>14</sup> Yet he is remembered in the small town of Monte Vista as it was he who created a hotel that was the "equal of any modern hotel in Southern Colorado and New Mexico" in 1930.<sup>15</sup>

Dutton and Kendall of Denver were chosen as the contractors for the new hotel. The firm had constructed some of the most prestigious buildings in the state at that time, including the Denver Motor Hotel, the Republic Building, and the Chrysler Building.<sup>16</sup> It is a fine tribute to the architect and contractors that when the Monte Villa Hotel was remodeled so little of their original craftsmanship was altered.

The period of significance for social history has been arbitrarily ended at 1940 due to the National Register's 50 year criterion. The hotel continues to be significant to the social history of Monte Vista to this day.

<sup>1</sup> "Local Committee Meets and Organizes for Campaign to Build Hotel in Monte Vista" Monte Vista Tribune, 30 January 1930, p.1.

<sup>2</sup> "Survey is Being Made for a New Hotel in Monte" Monte Vista Journal, 10 January 1930, p.1.

<sup>3</sup> "Local Committee Meets and Organizes for Campaign to Build Hotel in Monte Vista" Monte Vista Tribune, 30 January 1930, p.1.

United States Department of the Interior  
National Park Service

**NATIONAL REGISTER OF HISTORIC PLACES  
CONTINUATION SHEET**

Section number 8 Page 4

El Monte Hotel

---

4 "Hotel Sales Force Complete; Ready to Go Thru Success" Monte Vista Journal 28 February 1930, p.1.

5 "Campaign for Funds for New Hotel for Monte Vista Ends as Notable Success" Monte Vista Journal, 14 March 1930, p.1.

6 "Hotel Committee Employs Redding as Architect" Monte Vista Journal, 28 March 1930, p.1.

7 "Actual Financing of the New Monte Vista Hotel Gets Fine Boost at Very Outset" Monte Vista Journal, 14 February 1930, p.1.

8 Who's Who for Denver and Colorado (Capitol Publishing Co., Denver, Colorado 1940) p. 239.

9 "William Redding" Denver Post 23 November 1924, p. 19.

10 Interview with Hotel Boulderado historian, Silvia Pettem 2 January 1990.

11 "William Redding" Denver Post 23 November 1924, p. 19.

12 Denver Directory (The Gazetter Publishing and Printing Co., Denver, Colorado 1930) p. 1916.

13 Who's Who for Denver and Colorado (Capitol Publishing Co., Denver, Colorado 1940) p. 239.

14 "E Floyd Redding" Rocky Mountain News 10 March 1970, p. 85.

15 "Contracts Let for New Modern Hotel in Monte Vista and Work will Start at Once" Monte Vista Journal 11 July 1930, p.1.

16 "Contractors Start Work on New Hotel Today and Will Employ Local Labor as far as Possible to Benefit Community" Monte Vista Journal, 18 July 1930, p.1.

---

**9. Major Bibliographical References**

---

(X) See continuation sheet

**Previous documentation on file (NPS):**

- preliminary determination of individual listing ( 36 CFR 67) has been requested
- previously listed in the National Register
- previously determined eligible by the National Register
- designated a National Historic Landmark
- recorded by Historic American Buildings Survey # \_\_\_\_\_
- recorded by Historic American Engineering Record # \_\_\_\_\_

**Primary location of additional data:**

- State Historic Preservation Office
- Other State agency
- Federal agency
- Local government
- University
- Other

Specify Repository:  
\_\_\_\_\_

---

**10. Geographical Data**

---

**Acreeage of property:** less than one acre

**UTM References**

A 1|3    3|9|8|8|6|5|    4|1|5|9|7|0|5|  
Zone    Easting            Northing

B |    |    |    |    |    |    |    |    |    |  
Zone    Easting            Northing

C |    |    |    |    |    |    |    |    |    |  
Zone    Easting            Northing

D |    |    |    |    |    |    |    |    |    |  
Zone    Easting            Northing

( ) See continuation sheet

---

**Verbal Boundary Description**

(X) See continuation sheet

---

**Boundary Justification**

The boundary defines the property historically associated with the hotel.

( ) See continuation sheet

---

**11. Form Prepared By**

---

Name/Title: Sarah Rierson

Organization: Monte Vista Historical Society

Street & Number: P.O. Box 323

City or Town: Monte Vista

Date: 1/9/90

Telephone: (719) 852-4396

State: CO Zip Code: 81144

United States Department of the Interior  
National Park Service

**NATIONAL REGISTER OF HISTORIC PLACES  
CONTINUATION SHEET**

Section number 9 Page 2

El Monte Hotel

---

Denver Directory (The Gazetter Publishing & Printing Co., Denver, Colorado) 1919-1935 editions.

Denver Post "William Redding" 23 November 1924, p.19.

Index of Municipal Facts (Denver Public Library, Denver, Colorado, 1924)  
September - October Issue, p.11.

Massey, James C and Shirley Maxwell The Illustrated Old House Glossary (The Historic House Association of America, 1983) pp. 4-23.

Monte Vista Journal "Survey is Being Made for a New Hotel in Monte" 10 January 1930, p.1.

Monte Vista Journal "Actual Financing of the New Monte Vista Hotel Gets Fine Boost at the Very Outset" 14 February 1930, p.1.

Monte Vista Journal "Hotel Sales Force Complete; Ready to Go Thru to Success" 28 February 1930, p.1.

Monte Vista Journal "Campaign for Funds for New Hotel for Monte Vista Ends as Notable Community Success" 14 March 1930, p.1.

Monte Vista Journal "Hotel Committee Employs Redding as Architect" 28 March 1930, p.1.

Monte Vista Journal "Work on Monte Vista's New Modern Hotel will be Underway Within Few Weeks and Rushed to Completion"

Monte Vista Journal "Contracts Let for New Modern Hotel in Monte Vista and Work Will Start At Once" 11 July 1930, p.1.

Monte Vista Journal "Contractors Start Work on New Hotel Today and Will Employ Local Labor as far as Possible to Benefit Community" 18 July 1930, p.1.

Monte Vista Journal "Local Committee Launches Drive to Finance and Build Hotel in Monte Vista" 23 January 1930, p.1.

Monte Vista Journal "Local Committee Meets and Organizes Campaign to Build Hotel in Monte Vista" 30 January 1930, p.1.

United States Department of the Interior  
National Park Service

**NATIONAL REGISTER OF HISTORIC PLACES  
CONTINUATION SHEET**

Section number   9   Page   3  

El Monte Hotel

---

Riggenbach, Emma M. A Bridge to Yesterday (High Valley Press, Monte Vista, Colorado, 1982) pp 62-63.

Rocky Mountain News "E Floyd Redding" 10 March 1970, p. 85.

Who's Who for Denver and Colorado (Capitol Publishing Co., Denver, Colorado, 1940) p. 239.

INTERVIEWS

Barr, Peggy, President, Monte Vista Historical Society. Nov 89 - Jan 90.

Jennings, V'Nora, Office Manager, Monte Villa Inn, 1974 - present.

Long, Gary, Architect, Long-Hoeft of Denver, 29 December 1989.

Pettem, Silvia, Historian, Hotel Boulderado, 2 January 1990

United States Department of the Interior  
National Park Service

**NATIONAL REGISTER OF HISTORIC PLACES  
CONTINUATION SHEET**

Section number Photo Page 1

Log

El Monte Hotel

---

The Monte Villa Inn  
Monte Vista, Rio Grande County, Colorado  
Byron Spring, et al unknown  
1931 - 1989  
Monte Vista Historical Society

PHOTO #	PHOTO DESCRIPTION AND DATE	DATE	ROLL #	NEG #
1	Street facade of the El Monte circa	1931	3	16
2	Street facade of the Monte Villa	1989	2	14
3	East side view of Office/Carport	1989	6	2
4	Back side view of Monte Villa showing banquet hall, northeast staircase addition	1989	6	1
5	The Vestibule	1989	6	3
6	The El Monte Lobby	circa 1931	3	18
7	The Monte Villa Inn - dining room	1989	5	22
8	The Monte Villa Inn - skylight	1989	6	4
9	The lobby staircase	1989	4	20
10	The Otis Elevator	1989	4	23

NPS Form 10-900a  
(Rev. 8/86)  
NPS/CHS Word Processor Format  
(Approved 03/88)

OMB No. 1024-0018

United States Department of the Interior  
National Park Service

**NATIONAL REGISTER OF HISTORIC PLACES  
CONTINUATION SHEET**

Section number Maps Page 1

El Monte

---

Map Index  
El Monte Hotel

Map #1	Boundary Plan
Map #2	First Floor Plan
Map #3	Basement Floor Plan
Map #4	Second and Third Floor Plan

United States Department of the Interior  
National Park Service

**NATIONAL REGISTER OF HISTORIC PLACES  
CONTINUATION SHEET**

Section number 10 Page 2

El Monte Hotel

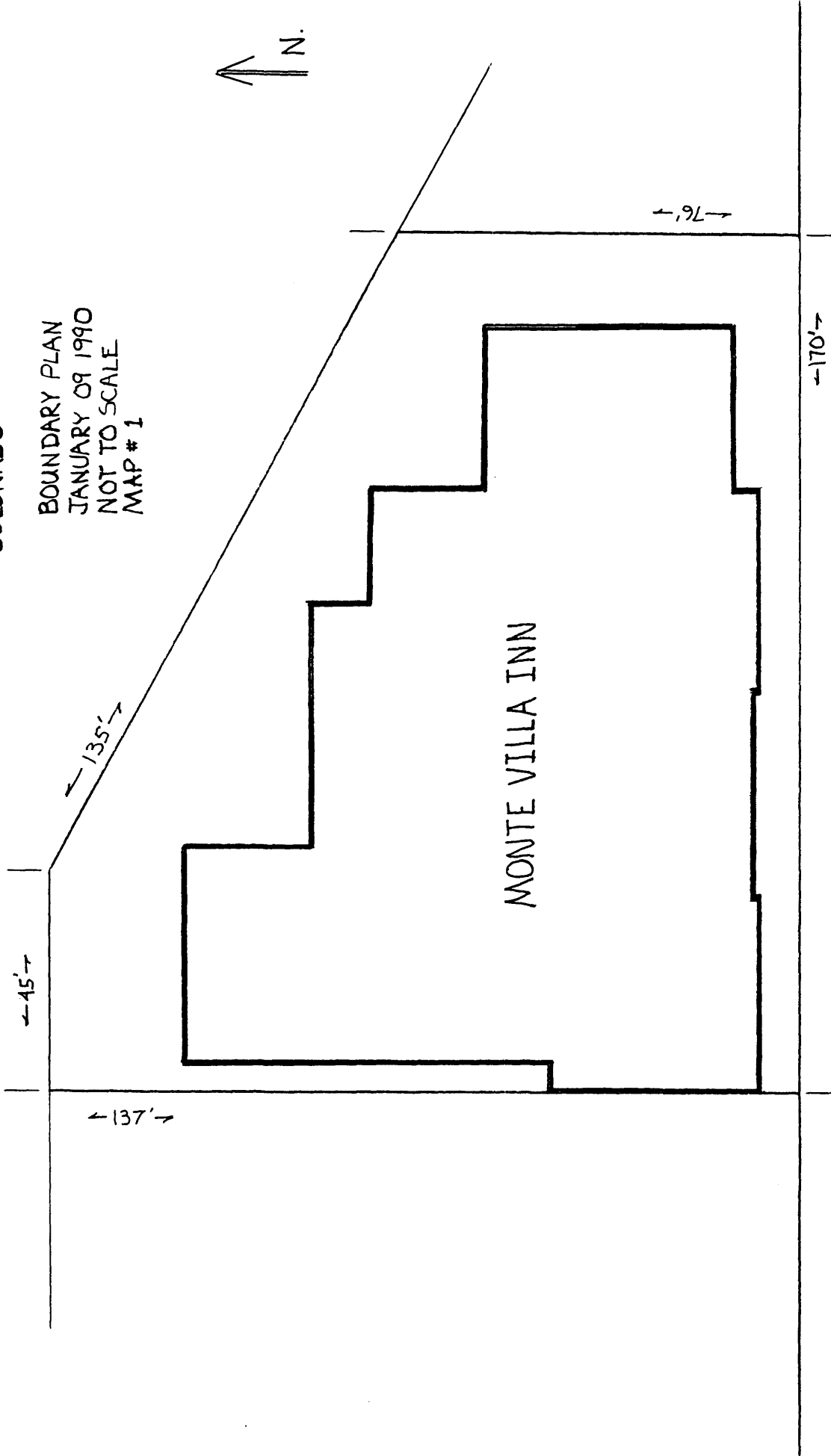
1ST AVE 925 MV .00 MAP: 35313  
FR BLK 13 MONTE VISTA  
FR NW4SW4 SEC 31-39-8  
ASSUM THE S LINE BLK 13 OF CITY OF MONTE VISTA BEARS  
E AND W; TH BEG AT SW COR O F TR HEREIN DESC A PT  
ON S LINE OFSD BLK 13, WHEN CE THE SW COR OF SD  
BLK 13 BEARS W, 100.00 FT; T H N, 50.99 FT TO A PT  
ON NE LINE OF BLK 13 TH N 62 DEG 05' W 28.29  
FT ALG NE LINE OF SD BLK 13 ; TH N 72.32 FT; TH E  
83.68 FT; TH N53.02 FT; TH N 7DEG 55MIN E, 20.00  
FT; TH S 62DEG 05MIN E, 48. 00 FT PARA TO AND 30 FT  
SWLY OF CEN LINE OF ORIGINA L MAIN IR OF CREEDE BR  
OF D&RGW RR CO TH S 79.21 FT TH S  
62DEG 05MIN E, 67.39/FT PAR A TO AND 100 FT SWLY  
OF CEN LINE OF SD ORIGINAL MAIN TR; TH S, 74.02  
FT, M/L, TO SE COR OF TR HER EIN DESC A PT ON S LINE  
OF SD BLK 13 EXT TH W, 170. 00 FT ALG S LINE OFSD  
BLK 13 EXT AND ALG S LINE O F SD BLK 13 TO  
POB CONT 0.59 A M/L ALSO:  
FR NW4SW4 SEC 31-39-8  
DESC AS FOL: BEG AT A PT LO CATED 48 FT W FROM  
PRODUCED W LINE OF JEFFERSO N ST IN SD CITY OF MV  
AND 76.1 FT M/L N OF PRODUC ED N LINE OF MAIN ST  
(FIRST AVE) IN SD CITY AND 100 FT SWLY MEAS AT R  
ANG FROMCEN LINE OF MAIN TR OF CREEDE BRANCH OF  
D AND RGW RR CO; TH N PARA WITH PRODUCED W LINE OF  
JEFFERSON ST 23.9 FT M/L; T H E PARA WITH PRODUCED  
N LINE OF MAIN ST (FIRST AV E) 87.8 FT M/L, TO A PT  
50 FT SWLY MEASURED AT R AN G FROM CEN LINE OF SD MAIN  
TR OF CREEDE BRANCH; TH N 6 2DEG 05MIN W PARA TO  
AND 50 FT SLY FROM CEN LINE OF SD MAIN TR OF  
CREEDE BRANCH, 137.63 FT, M /L TO A PT WHICH IS  
LOCATED 107.55 FT W FROM PR ODUCE W LINE OF  
JEFFERSON ST; TH S 56.58 FT M/L TO A PT LOCATED  
100 FT SWLY MEAS AT R ANG F ROM SD MAIN TR OF  
CREEDE BRANCH; TH S 62DEG 0 5MIN E PARA TO AND 100  
FT SLY FROM MAIN TR OF CREE DE BRANCH 67.39 FT  
M/L TO PT OF BEG CONT 0.13 A M/L  
WTY DEED BK 422 PG 85 1-5-89  
LEGAL CHG:890217 DEANNA LEGAL ACRES .00



# MONTE VILLA INN

MONTE VISTA  
RIO GRANDE COUNTY  
COLORADO

BOUNDARY PLAN  
JANUARY 09 1990  
NOT TO SCALE  
MAP # 1

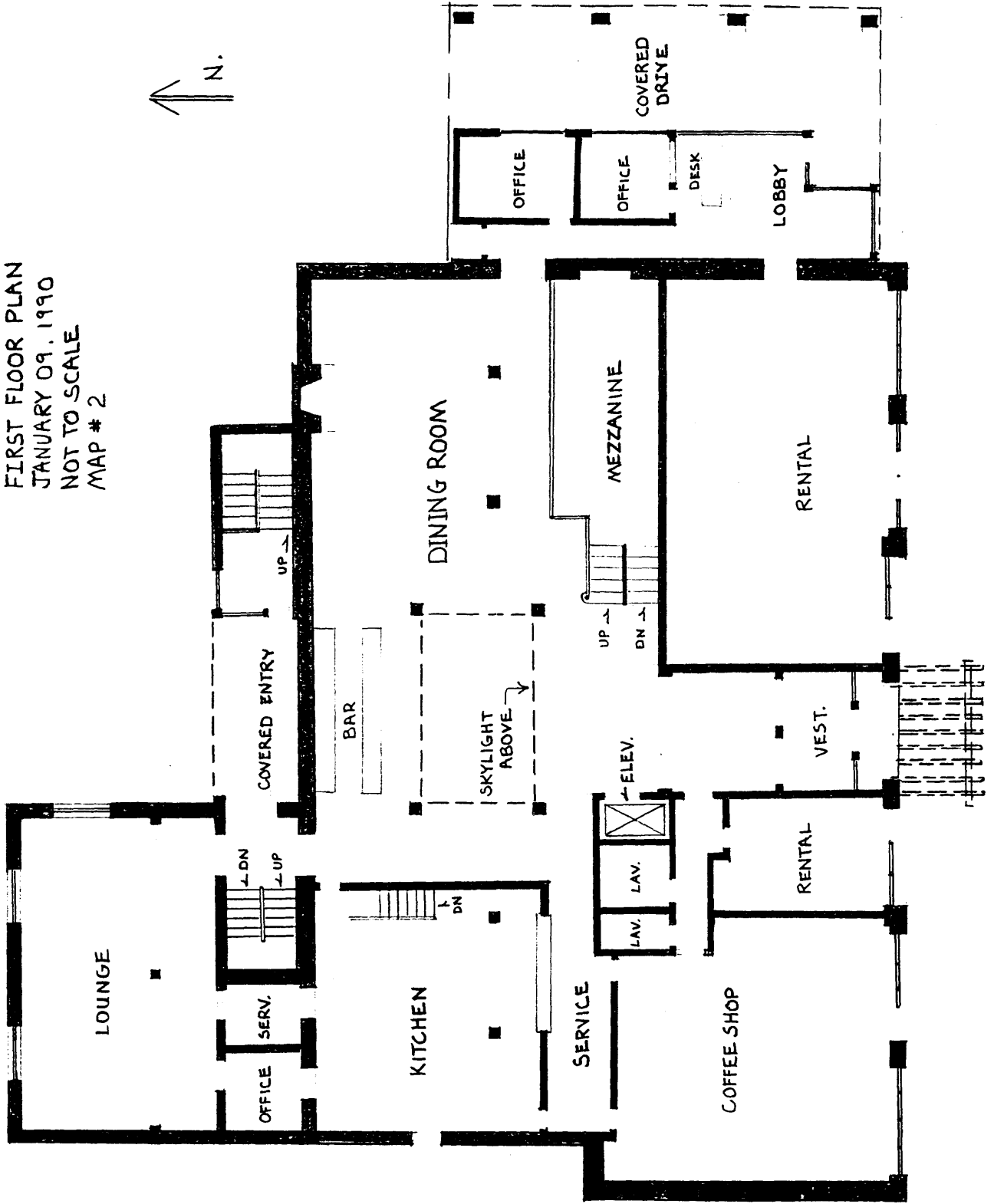


1<sup>ST</sup> AVENUE

# MONTE VILLA INN

MONTE VISTA  
RIO GRANDE COUNTY  
COLORADO

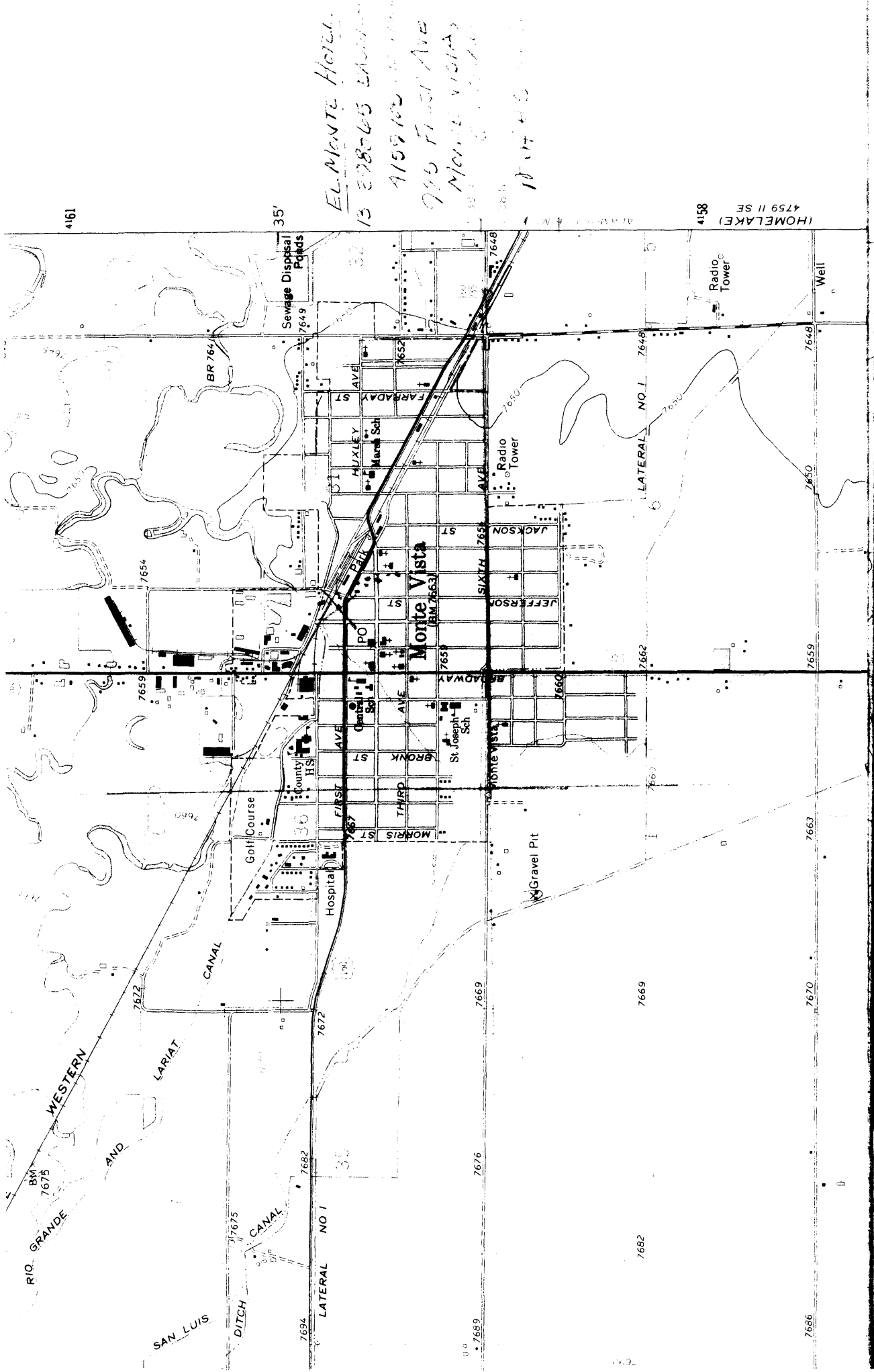
FIRST FLOOR PLAN  
JANUARY 09, 1990  
NOT TO SCALE  
MAP # 2







*EL MONTE HOTEL*  
*13 298065 EAST*  
*4159103*  
*915 FIFTH AVE*  
*MONTE VISTA*  
*10740*



4161

35'

4158 (HOMELAKE)  
 4759 II SE

7686

7682

7670

7663

7659

7650

7648

Well

7669

7689

7676

7669

7663

7659

7650

7648

7648

7694

7682

7672

7660

7659

7654

7649

7649

CANAL

SAN LUIS  
 DITCH

RIO GRANDE

WESTERN  
 AND  
 LARIAT

Golf Course

County HS

Hospital

El Monte  
 Vista

Gravel Pit

Radio  
 Tower

Radio  
 Tower

LATERAL NO 1

JEFFERSON

BRADWAY

MORRIS

THIRD

FIRST

SIXTH

JACKSON

HUXLEY

FARMADAY

ST

AVE

ST

ST

ST

ST

ST

ST

ST

ST

ST

ST

ST

ST

ST

ST

ST

ST

ST

ST

ST

ST

ST

ST

ST

ST

ST

ST

ST

ST

ST

ST

ST

ST

ST

ST

ST

ST

ST

ST

ST

ST

ST

ST

ST

ST

ST

ST

ST

ST

ST

ST

ST

ST

ST

ST

ST

ST

ST

ST

ST

ST

ST

ST

ST

ST

ST

ST

ST

ST

ST

ST

ST

ST

ST

ST

ST

ST

ST

ST

ST

ST

ST

ST

ST

ST

ST

ST

ST

ST

ST

ST

ST

ST

ST

ST

ST

ST

ST

ST

ST

ST

ST

ST

ST

ST

ST

ST

ST

ST

ST

ST

ST

ST

ST

ST

ST

ST

ST

ST

ST

ST

ST

ST

ST

ST

ST

ST

ST

ST

ST

ST

ST

ST

ST

ST

ST

ST

ST

ST

ST

ST

ST

ST

ST

ST

ST

ST

ST

ST

ST

ST

ST

ST

ST

ST

ST

ST

ST

ST

ST

ST

ST

ST

ST

ST

ST

ST

ST

ST

ST

ST

ST

ST

ST

ST