

United States Department of the Interior
National Park Service

National Register of Historic Places
Continuation Sheet

Section number _____ Page _____

SUPPLEMENTARY LISTING RECORD

NRIS Reference Number: 91001640

Date Listed: 11/15/91

Pheba Historic District
Property Name

Clay
County

MISSISSIPPI
State

Clay County MPS
Multiple Name

This property is listed in the National Register of Historic Places in accordance with the attached nomination documentation subject to the following exceptions, exclusions, or amendments, notwithstanding the National Park Service certification included in the nomination documentation.

Mal M. ...
Signature of the Keeper

7/10/92
Date of Action

=====
Amended Items in Nomination:

Section No. 10

The verbal boundary description is amended to read: "The Pheba Historic District consists of Lot 18 and the eastern half of Lot 17 of the original plat of the Village of Pheba, Clay County, Mississippi."

This wording was provided by Richard Cawthon of the Mississippi SHPO office (2/20/92).

DISTRIBUTION:

- National Register property file
- Nominating Authority (without nomination attachment)

United States Department of the Interior
National Park Service

National Register of Historic Places Registration Form

NATIONAL
REGISTER

This form is for use in nominating or requesting determinations of eligibility for individual properties or districts. See instructions in *Guidelines for Completing National Register Forms* (National Register Bulletin 16). Complete each item by marking "x" in the appropriate box or by entering the requested information. If an item does not apply to the property being documented, enter "N/A" for "not applicable." For functions, styles, materials, and areas of significance, enter only the categories and subcategories listed in the instructions. For additional space use continuation sheets (Form 10-900a). Type all entries.

1. Name of Property

historic name

other names/site number Pheba Historic District (McCarter's Store and Post Office)

2. Location

street & number Pheba Street #2, just west of State Hwy 389 N/A not for publication

city, town Pheba N/A vicinity

state Mississippi code MS county Clay code 25 zip code 39755

3. Classification

Ownership of Property

- private
- public-local
- public-State
- public-Federal

Category of Property

- building(s)
- district
- site
- structure
- object

Number of Resources within Property

Contributing	Noncontributing	
<u>2</u>	<u>0</u>	buildings
<u> </u>	<u> </u>	sites
<u> </u>	<u> </u>	structures
<u> </u>	<u> </u>	objects
<u>2</u>	<u>0</u>	Total

Name of related multiple property listing:
Clay County Multiple Resource Area

Number of contributing resources previously listed in the National Register 0

4. State/Federal Agency Certification

As the designated authority under the National Historic Preservation Act of 1966, as amended, I hereby certify that this nomination request for determination of eligibility meets the documentation standards for registering properties in the National Register of Historic Places and meets the procedural and professional requirements set forth in 36 CFR Part 60. In my opinion, the property meets does not meet the National Register criteria. See continuation sheet.

Kenneth A. P. Pool SEPT. 18, 1991
Signature of certifying official Date

Deputy State Historic Preservation Officer
State or Federal agency and bureau

In my opinion, the property meets does not meet the National Register criteria. See continuation sheet.

Signature of commenting or other official Date

State or Federal agency and bureau

5. National Park Service Certification

I, hereby, certify that this property is:

- entered in the National Register.
 See continuation sheet.
- determined eligible for the National Register. See continuation sheet.
- determined not eligible for the National Register.
- removed from the National Register.
- other, (explain:)

Patrick Andrews 11-15-91

for Signature of the Keeper Date of Action

6. Function or Use

Historic Functions (enter categories from instructions)

Commerce/Trade: department store
Commerce/Trade: financial institution

Current Functions (enter categories from instructions)

Commerce/Trade; department store
Government: post office

7. Description

Architectural Classification

(enter categories from instructions)

Other: Victorian Commercial Vernacular

Materials (enter categories from instructions)

foundation brick
walls weatherboard

roof metal

other

Describe present and historic physical appearance.

The two buildings that make up this tiny district are nominated as the most historically important remaining buildings in what was once the center of the busy town of Pheba. The buildings are adjacent, on the north side of what is now called Pheba Street #2. Visually, as well as historically, they represent Pheba's halcyon days -- from about 1895 to 1935. (See photo #1.) Pheba St. # 2 runs parallel to the Columbus and Greenville Railroad tracks and creates a "T" intersection with north-south State Road 389. A larger district is not nominated because vacant lots, decaying buildings, and altered buildings post-dating the town's period of significance make up the remainder of the resources on the historic two-block main street.

The buildings are dissimilar, but complimentary. The McCarter Store is a typical late 19th century rural store (c. 1895), rectangularly massed, with an integral front porch supported on square boxed columns and half-length brick piers. (See photo # 3.) It is one generous story tall, has brick foundation piers, and is sided in weatherboard. Gabled wings for living quarters have been added at the rear, one on the western elevation at the north corner, and one on the northern elevation. The facade is three bay (window, door, window). The store windows project from the facade in cornice-hooded boxed bays. Each has two vertical front lights and a two-light transom. The double-leafed doors have covering screens and a four-light transom with hood molding matching the molding on the windows. (See photo #4.)

On the interior, McCarter's Store is an open rectangle. It has flush board walls and ceiling and a tongue-and-groove floor. The original shelves still line the side walls, and old display cases and counters face the center of the store with their backs to the shelves. (See photo #5.) A drink cooler sits at the center front of the store, just inside the doors. Behind it are a freezer and other food containers. A pot-bellied stove and some living room furniture are located in the rear two-thirds of the store. A wooden partition at the rear creates space for a kitchen and opens into the lower, one story living wing to the west. Rear double doors on the west side open onto a high loading platform at the level where wagons waited for goods in the days before the living quarters blocked their exit to the next street. The date of the living quarters addition is not known, but it was there when the McCarters bought the store in 1941. (So was the town pump, out front, in the middle of the street.)

The Post Office building, a former bank (built c. 1900), is a nicely detailed one story brick structure with a hidden roof. The facade elevation is higher than

 See continuation sheet

**United States Department of the Interior
National Park Service**

**National Register of Historic Places
Continuation Sheet**

Pheba Historic District, Clay County, Mississippi

Section number 7 Page 1

the rear (north) elevation. The building is a simple rectangle. The facade is three bay (window, window, door). The door appears to have replacement leaves, they have two panels each and are made of plywood. The 1/1 double-hung windows and the door have round-arched projecting brick hoods and divided fanlights. A new metal shed roof on the facade obscures the decorative brickwork and windows. (See Photo #2.)

The Post Office, has been altered on the interior. Its postal window and boxes were installed about 1959. They are old fittings, but are not original to this building. Their origin is unknown. A wooden bench sits under the front windows. Except for a tall writing desk, it is the only furniture visible to the customers. The interior walls have been partially covered with inexpensive modern paneling.

The two buildings, once the western end of a continuous row leading to the intersection with State Road 389, are now viewed with vacant lots on both sides. The only other buildings on the north side of the street are a board-and-batten storage house at the west end of the block (an early 20th century substitute for a former livery stable/restaurant/bar), and a one-story, wood-framed beer joint at the eastern end. This intersection once had stores on both sides of Street #2 and both sides of 389. A hotel, a store, and numerous other buildings at the intersection have burned or been dismantled. Two of the three stores on the south side of Street #2 are abandoned and falling in. There is a vacant lot between them and an early 20th century frame building with many additions now being used by a professional photographer. The trains, which created the town, still stop at Pheba to pick up pulpwood, but the Craftsman style depot is gone. Though there are several railroad-era houses in Pheba and the Methodist-Episcopal Church which moved here in 1896 survives, the locations of the houses and alterations to their original form make a larger historic district impossible.

8. Statement of Significance

Certifying official has considered the significance of this property in relation to other properties:

nationally statewide locally

Applicable National Register Criteria A B C D

Criteria Considerations (Exceptions) A B C D E F G

Areas of Significance (enter categories from instructions)

Commerce

Significant Person

N/A

Period of Significance

1895-1935

Cultural Affiliation

N/A

Architect/Builder

Unknown

Significant Dates

N/A

State significance of property, and justify criteria, criteria considerations, and areas and periods of significance noted above.

The buildings best representing Pheba's heydays, from around 1900 to 1940, are McCarter's Store and the former bank building now serving as the U.S. Post Office. They are significant as examples of rural commercial architecture, but more significant as symbols of the early 20th century railroad town. (Many of Clay County's railroad towns flourished beginning in the 1890s and began their commercial declines in the years preceding and after World War II, as explained in the Historic Context section.) The place of railroad towns in the development of Clay County is described in the Commercial Resources Section of the Historic Context statement.

On land donated by Miss Pheba Petty in 1889, the first houses were built in a railroad-dependent community. The Georgia Pacific, now the Columbus & Greenville, came through the fledgling town for the first time in 1891. A water tower and a depot for the steam trains were the first landmarks. Though the tower and depot are both gone now, some of the businesses and homes that they helped into existence survive, in reduced circumstances, to represent the life of rural Clay County towns that served as "way stations" on the rail lines that made the county seat, West Point, the dominant commercial area. They flourished while the railroads flourished, but declined as automobiles and trucks, using improved road systems, took over transportation duties. Pheba was incorporated in its palmy days, c 1908, when the two story brick high school was new and the town boasted two hotels, several stores, and the traditional blacksmith, gin and grist mill operations. It reverted to being a county community in 1940.

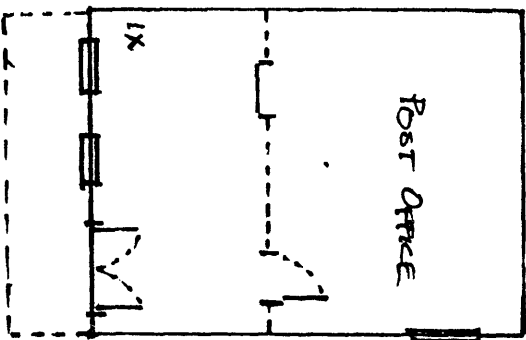
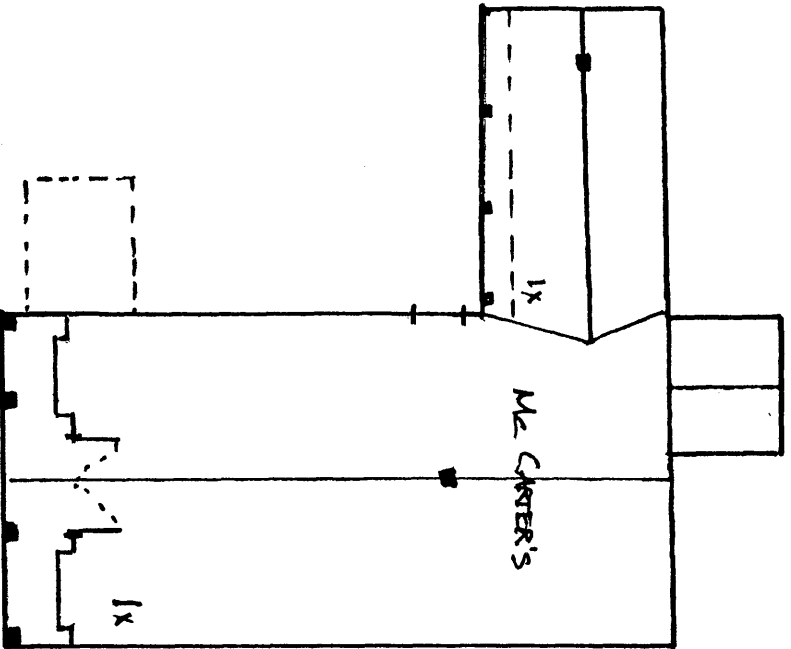
See continuation sheet



PIEBA STREET # 3

DISTRICT
BOUNDARIES

ST.
RD.
389



VAC.
LOT

Road
House

PIEBA STREET # 2

NOT TO SCALE