



Streetscape-Magnolia Street
Spartanburg Historic District
Spartanburg, South Carolina
Thomason and Associates, August 16, 1982
South Carolina Dept. Archives and History
looking northwest



Streetscape North Spring Street
Spartanburg Historic District
Spartanburg, South Carolina
Thomason and Associates, August 16, 1982
South Carolina Dept. Archives and History
View south from property #4 towards
Main Street



Streetscape, Wall Street

Spartanburg Historic District

Spartanburg, South Carolina

Thomason and Associates, August 16, 1982

South Carolina Dept. Archives and History

View north from Broad Street



Streetscape West Main Street
Spartanburg Historic District
Spartanburg, South Carolina
Thomason and Associates, August 16, 1982
South Carolina Dept. Archives and History
View west from corner of Main and Spring
Streets.



Streetscape West Main Street
Spartanburg Historic District
Spartanburg, South Carolina
Thomason and Associates, August 16, 1982
South Carolina Dept. Archives and History
View east from Main and Magnolia



Property #1, Spartanburg Historic District
156 Magnolia Street
Spartanburg, South Carolina
Thomason and Associates, August 16, 1982
South Carolina Dept. Archives and History
East Elevation



Property #2&3, Spartanburg Historic District
Vacant lots - Magnolia Street
Spartanburg, South Carolina
Thomason and Associates, August 16, 1982
South Carolina Dept. Archives and History
East View



Property #4, Spartanburg Historic District
130-136 Magnolia Street
Spartanburg, South Carolina
Thomason and Associates, August 16, 1982
South Carolina Dept. Archives and History
East Elevation

AC FURNITURE CO

A black and white photograph of a three-story brick building facade. The ground floor features a large storefront with a dark, recessed entrance. Above the entrance, the words "AC FURNITURE CO" are painted in large, light-colored, block letters. The second floor has three large windows, each covered with vertical wooden planks. The third floor has three smaller, rectangular windows. The building is flanked by other structures: a white building with a "G" logo on the left and a light-colored building with a window on the right. A sidewalk and a street are visible in the foreground.

Property #5, Spartanburg Historic District
128 Magnolia Street
Spartanburg, South Carolina
Thomason and Associates, August 16, 1982
South Carolina Dept. Archives and History
East Elevation

Jack's SHOES
AND CLOTHING



Property #6, Spartanburg Historic District
124 Magnolia Street
Spartanburg, South Carolina
Thomason and Associates, August 16, 1982
South Carolina Dept. Archives and History
East Elevation



PAWN SHOP

SPARTANBURG LOAN CO.
PAWNBROKERS
SINCE 1929

Smith MUSIC HOUSE

AMERICAN SHOE SHOP
Coca-Cola

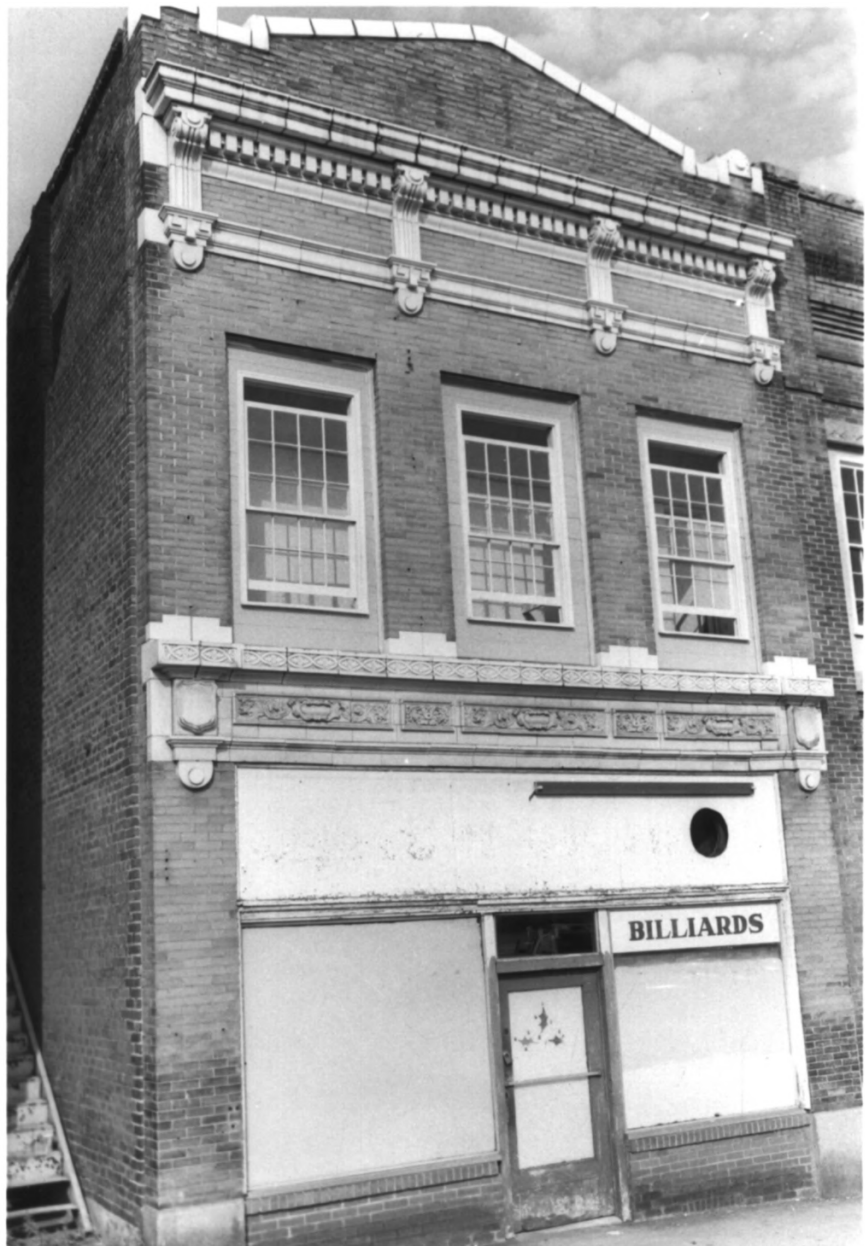
PSI AMERICAN SHOE SHOP PSI

CO. →
LADIES COMING

Property #7&8, Spartanburg Historic District
118-122 Magnolia Street
Spartanburg, South Carolina
Thomason and Associates, August 16, 1982
South Carolina Dept. Archives and History
East Elevation



Property #9, Spartanburg Historic District
116 Magnolia Street
Spartanburg, South Carolina
Thomason and Associates, August 16, 1982
South Carolina Dept. Archives and History
East Elevation



BILLIARDS

Property #10, Spartanburg Historic District
114 Magnolia Street
Spartanburg, South Carolina
Thomason and Associates, August 16, 1982
South Carolina Dept. Archives and History
East Elevation



SOUTHERN NATIONAL BANK

THE CITIZENS
OF
SOUTHERN
NATIONAL
BANK
1917-1918

Property #11, Spartanburg Historic District
148 West Main Street
Spartanburg, South Carolina
Thomason and Associates, August 16, 1982
South Carolina Dept. Archives and History
South elevation



Property #12, Spartanburg Historic District
154-156 West Main Street
Spartanburg, South Carolina
Thomason and Associates, August 16, 1982
South Carolina Dept. Archives and History
South and west elevation



Property #13, Spartanburg Historic District
158 West Main Street
Spartanburg, South Carolina
Thomason and Associates, August 16, 1982
South Carolina Dept. Archives and History
South elevation



MUNICIPAL OFFICE BUILDING

168

Property #14, Spartanburg Historic District
168 West Main Street
Spartanburg, South Carolina
Thomason and Associates, August 16, 1982
South Carolina Dept. Archives and History
South elevation



Property #15, Spartanburg Historic District
Cleveland Inn
Spartanburg, South Carolina
Thomason and Associates, August 16, 1982
South Carolina Dept. Archives and History
South elevation



Property #16, Spartanburg Historic District
Masonic Temple
Spartanburg, South Carolina
Thomason and Associates, August 16, 1982
South Carolina Dept. Archives and History
South Elevation



Property #17, Spartanburg Historic District
196 West Main Street
Spartanburg, South Carolina
Thomason and Associates, August 16, 1982
South Carolina Dept. Archives and History
South elevation



Property #18, Spartanburg Historic District

200 West Main Street

Spartanburg, South Carolina

Thomason and Associates, August 16, 1982

South Carolina Dept. Archives and History

South and west elevation



ERWIN WHOLESALE
COMPANY INC.
ESTABLISHED 1927

Property #19, Spartanburg Historic District

Vacant lot

Spartanburg, South Carolina

Thomason and Associates, August 16, 1982

South Carolina Dept. Archives and History

View west



ROAD
CONSTRUCTION

ECONO-MUFFLER Co.

SALES SERVICE PHONE 582-3922

Property #20, Spartanburg Historic District
200 Ezell Street
Spartanburg, South Carolina
Thomason and Associates, August 16, 1982
South Carolina Dept. Archives and History
South elevation

RWIN WHOLESALE
COMPANY INC.
ESTABLISHED 187

RWIN WHOLESALE
COMPANY INC.



Property #21, Spartanburg Historic District
190 Ezell Street
Spartanburg, South Carolina
Thomason and Associates, August 16, 1982
South Carolina Dept. Archives and History
South elevation



Property #22, Spartanburg Historic District
176 Ezell Street
Spartanburg, South Carolina
Thomason and Associates, August 16, 1982
South Carolina Dept. Archives and History
South elevation



Property #23, Spartanburg Historic District
174-172 Ezell Street
Spartanburg, South Carolina
Thomason and Associates, August 16, 1982
South Carolina Dept. Archives and History



Property #24, Spartanburg Historic District
170 Ezell Street
Spartanburg, South Carolina
Thomason and Associates, August 16, 1982
South Carolina Dept. Archives and History
South elevation



Property #25, Spartanburg Historic District

Vacant lot

Spartanburg, South Carolina

Thomason and Associates, August 16, 1982

South Carolina Dept. Archives and History

View west from Main and Magnolia Streets



Property #26, Spartanburg Historic District
155 West Main Street
Spartanburg, South Carolina
Thomason and Associates, August 16, 1982
South Carolina Dept. Archives and History
North elevation



PARTY SHOP

MIXES

WINE

Property #27, Spartanburg Historic District
South Spring Street
Spartanburg, South Carolina
Thomason and Associates, August 16, 1982
South Carolina Dept. Archives and History
West elevation



COFFEE SHOP

PETES

RESTAURANT

BRICK BLDG

LOANS

DO NOT ENTER

STREET SIGN

Property #28&29, Spartanburg Historic
District

149-151 West Main Street

Spartanburg, South Carolina

Thomason and Associates, August 16, 1982

South Carolina Dept. Archives and History

North elevation



LANE
FINANCE
CO., INC.
LOANS

LANE FINANCE
CO., INC.
LOANS

LANE FINANCE
CO., INC.
LOANS

TURNER'S
BARBER SHOP

OPEN
BAR
CLOSE
IN
Holiday Eve

Property #30, Spartanburg Historic District
110-114 Wall Street
Spartanburg, South Carolina
Thomason and Associates, August 16, 1982
South Carolina Dept. Archives and History
East elevation



Property #31, Spartanburg Historic District
111 Wall Street
Spartanburg, South Carolina
Thomason and Associates, August 16, 1982
South Carolina Dept. Archives and History
West elevation



LOANS

NATIONAL
FINANCE
CO.

DO NOT
ENTER

RAIN
BRIDGE

NATIONAL
FINANCE CO.
LOANS

NATIONAL
FINANCE CO.
LOANS

Property #32, Spartanburg Historic District
145 West Main Street
Spartanburg, South Carolina
Thomason and Associates, August 16, 1982
South Carolina Dept. Archives and History
North elevation



JGS

OFFICE SPACE
FOR RENT
CALL
OR APPLY AT
NINETEEN FINANCE

TRUCK, TRAILER
AND EQUIPMENT
RENTAL SERVICE
CALL OR APPLY AT
NINETEEN FINANCE

OFFICE SPACE
FOR RENT

LOANS

NATIONAL
FINANCE
CO.

141

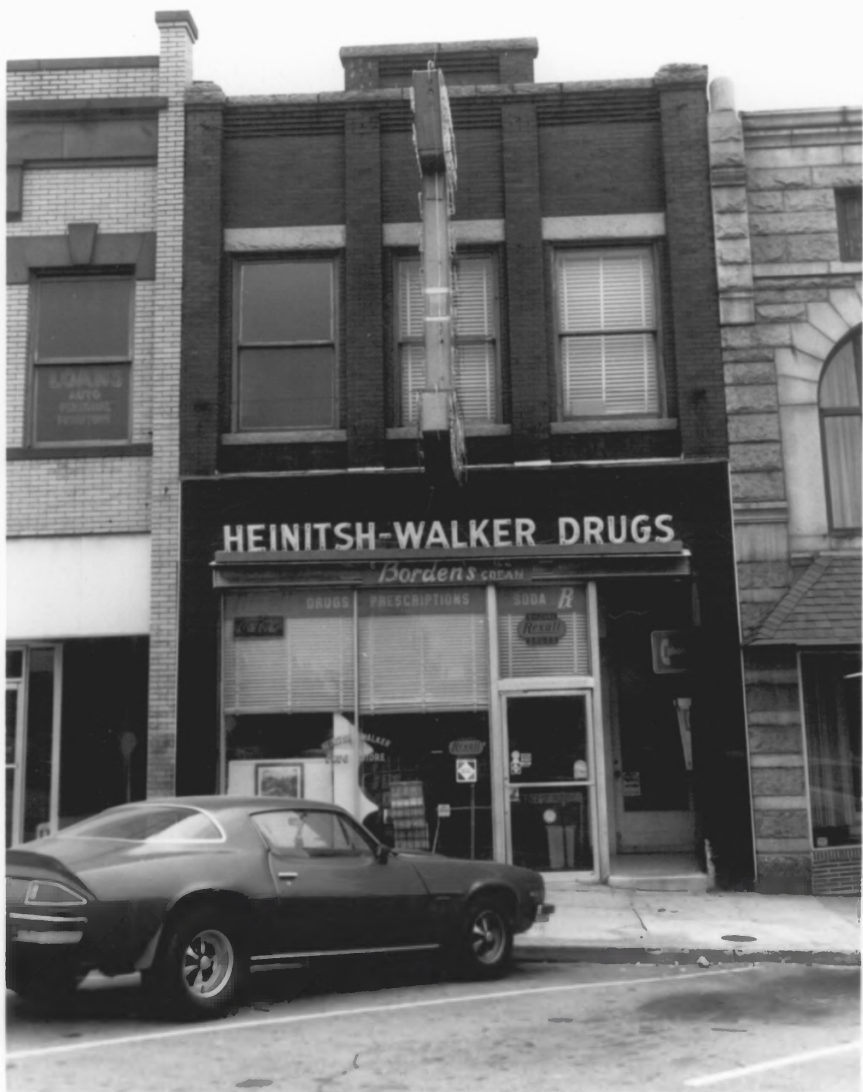
LOANS

NATIONAL
FINANCE
LOANS

NATIONAL
FINANCE
LOANS

141-411

Property #33, Spartanburg Historic District
141-143 West Main Street
Spartanburg, South Carolina
Thomason and Associates, August 16, 1982
South Carolina Dept. Archives and History
North elevation



HEINITSH-WALKER DRUGS

Borden's CREAM

DRUGS

PRESCRIPTIONS

SODA R

WALKER

WALKER

WALKER

WALKER

WALKER

WALKER

WALKER

WALKER

WALKER

WALKER

WALKER

WALKER

Property #34, Spartanburg Historic District
139 West Main Street
Spartanburg, South Carolina
Thomason and Associates, August 16, 1982
South Carolina Dept. Archives and History
North elevation



ANDREW T. JACOBSON
LAWYER

W. E. PERDUE &
ASSOCIATES
INC.

LAWSON'S
AUTO
REPAIR &
TUNING

HEIN

LAWSON'S
AUTO REPAIR & TUNING

Property #35, Spartanburg Historic District
137 West Main Street
Spartanburg, South Carolina
Thomason and Associates, August 16, 1982
South Carolina Dept. Archives and History
North elevation



DEMOCRATS

ANDERSON'S
CANNERY

Property #36, Spartanburg Historic District
135 West Main Street
Spartanburg, South Carolina
Thomason and Associates, August 16, 1982
South Carolina Dept. Archives and History
North elevation



Property #37, Spartanburg Historic District
131 West Main Street
Spartanburg, South Carolina
Thomason and Associates, August 16, 1982
South Carolina Dept. Archives and History
North elevation



Property #38, Spartanburg Historic District
129 West Main Street
Spartanburg, South Carolina
Thomason and Associates, August 16, 1982
South Carolina Dept. Archives and History
North elevation



Property #39, Spartanburg Historic District
125-127 West Main Street
Spartanburg, South Carolina
Thomason and Associates, August 16, 1982
South Carolina Dept. Archives and History
North elevation



Property #40, Spartanburg Historic District
119-121 West Main Street
Spartanburg, South Carolina
Thomason and Associates, August 16, 1982
South Carolina Dept. Archives and History
North elevation



MOORE & TURNER
LAWYERS

EVALUATION

CALVIN
WHITE
REAL
ESTATE

585-7676

FIRST
FIDELITY
FINANCE
CORP.

CALVIN
WHITE
Colorpoint

LOADS
-SALV-ROBES

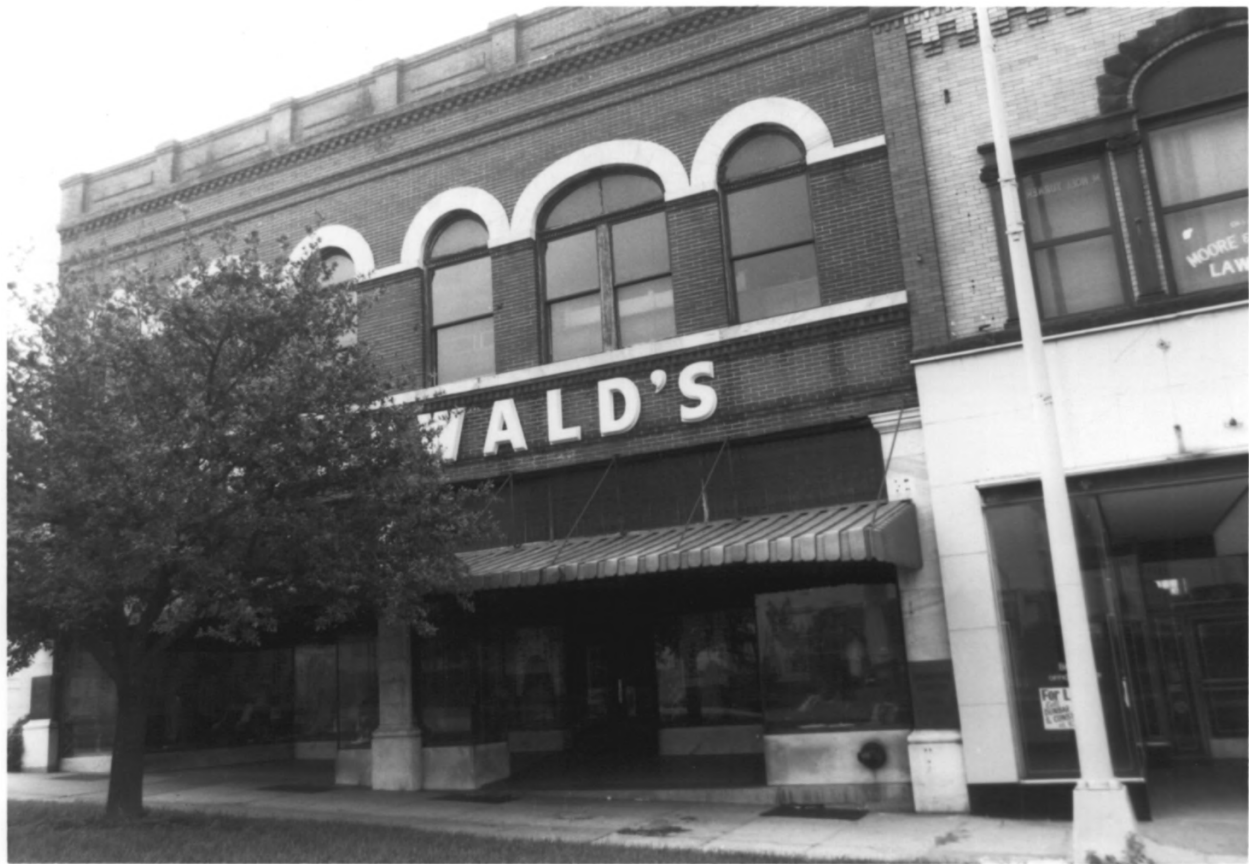
8080
For Lease

8080

CALVIN
WHITE
REAL
ESTATE

FIRST
FIDELITY
FINANCE

Property #41, Spartanburg Historic District
113-115 West Main Street
Spartanburg, South Carolina
Thomason and Associates, August 16, 1982



Property #42, Spartanburg Historic District
109-111 West Main Street
Spartanburg, South Carolina
Thomason and Associates, August 16, 1982
South Carolina Dept. Archives and History
North elevation