

United States Department of the Interior
National Park Service

National Register of Historic Places
Continuation Sheet

RECEIVED
MAY 27 1987
NATIONAL REGISTER
HISTORIC PLACES

Section number CZ 16 Page 1 Svatos Barn

Site # CZ 16

1. Frank Svatos Rubblestone Barn.
2. Ziskov Township
Tabor Vicinity
South Dakota Code: 046
First Congr. District
Yankton County Code: 135
3. Building; Privately owned; NA acquisition; Occupied; Restricted access;
Agricultural.
4. Jerry Herman
RR 1
Tabor, SD 57063
5. Register of Deeds
Yankton County Courthouse
Yankton, SD 57078
7. Good; Unaltered; Original site.

The Frank Svatos Barn is an unaltered rectangular rubblestone structure situated on a working farm in western Yankton County. It is located about one mile from the Mathias Merkwon Barn (CZ 13), to which it bears a striking resemblance. The dimensions of the barn are 61 feet in length and 24 feet in width. The masonry wall was built directly flush with the ground to a height of about 10 feet. A wood frame wall of approximately 2" x 4" was placed atop the stone wall. Large round and square machine-cut ceiling joists are set into the stone wall with the ends exposed on the west axial facade. The barn's gable roof was constructed of 30 common rafters with transverse braces near the peak and covered with horizontal boards and wooden shingles. Rafter spacing is 24 inches. A galvanized ridge cap and two wooden vented cupolas are in place at the peak.

The Barn is entered via two small Dutch doors on the east facade and a large door on the south gable end. For outside access to the hay loft, two small doors were placed in the wood frame wall on the east facade directly above the ground-level entry doors. There is no gable-end entry to the loft. Each axial wall has three windows and the north gable end has one window. Inside access to the loft is provided by a ladder-stair along the east wall. Interior space is bisected by a wood frame partition wall, and all interior surfaces are painted white.

United States Department of the Interior
National Park Service

National Register of Historic Places
Continuation Sheet

Section number CZ 16 Page 2 Svatos Barn

Similar to the Mathias Merkwan Barn (CZ 13), this site also includes a modernized coaxial linear log house. The example at this farm, however, is no longer used as a dwelling. It is instead used for storage and recently has been altered to provide garage space. Yet, enough structural data is extant to support the coaxial form discussed in the overview. It is not eligible for listing.

A vaulted root cellar, with an entry from both inside and outside the house, is located just east of the house.

8. 1869-1899; Architecture, Exploration/Settlement, Czech Ethnic.

Specific date unknown. Frank Svatos, builder.

Significant in architecture, the Svatos Rubblestone Barn is the purest example of medium-sized Czech masonry barns in the survey area. Its walls, roof, and fenestration are basically unchanged from when the structure was erected in the 19th Century. Thus, the barn offers an excellent model for the study of Czech folk building forms. In addition, the farm site is one of two within one mile of each other that contain similar masonry barns and log houses, both illustrating Czech settlement and folk architecture. The barn is used daily as a hog confinement facility.

The Svatos Barn is also significant in the history of Czech settlement in the state. Frank Svatos Sr. was born in 1836 at Radihost, Bohemia and brought his family from there to Dakota Territory in 1870. On the journey across the ocean, his two year old son fell from the ship and drowned. Despite this initial tragedy, the Svatos family persevered and became a prominent Czech Catholic family in the Tabor, SD area.

Major biographical source: Dvorak (1980), 26, 39, 117.

10. Acreage: less than one acre. Scale: 1:24,000.
Quad.: Tabor. UTM: 14/ 611900/ 4754350.

The boundaries of this property are imaginary lines that connect to form a rectangle centered on the rectangular barn. Each line lies 10 feet from the exterior walls of the building. The site is located in the Northeast Quarter of the Northwest Quarter of Section 30, Township 94 North, Range 57 West, in Yankton County.

**United States Department of the Interior
National Park Service**

National Register of Historic Places Continuation Sheet

Section number CZ 16 Page 3

Svatos Barn

SITE PLAN OF FARMSTEAD CONTAINING CZ 16 ON REVERSE SIDE

SITE PLAN (Complete inventory of all structures, their function, dates & details of construction, and surrounding vegetation) WITH NORTH ARROW

SITE NAME: FRANK SVATOS
CZ SURVEY #: 116

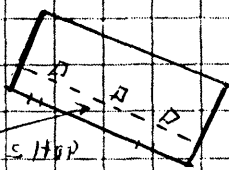


SECTION ROAD

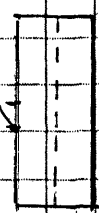
(FIELD)

(SHELTER BELT)

HEN HOUSE
CONVERTED
INTO A WOOD SHOP

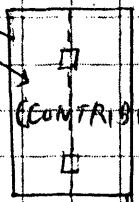


MODERN 1-Story
House
(inside fence)



(SHELTER BELT)

CZ16a

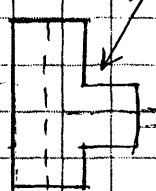


(CONTRIBUTING)

Hand Pumps
on Wells
open
Pump

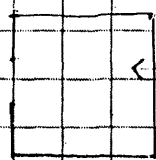
(CZ16b)

1/2-Story House
CONVERTED INTO
A GARAGE
(Bottom Story on W. is
Const. of L.C.F.)



CELLAR
ENTRANCE

Skeleton Framework
For New Const.
of Machine Shed



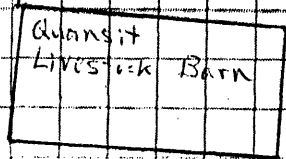
WINDMILL

Storage



ANIMAL
LOADING
SITE

Quansit
Livestock Barn



(SHELTER BELT)

(SHELTER BELT)