



Timberhill Associates  
REAL ESTATE  
INVESTMENTS

TOURIST  
INFORMATION  
→  
BRA

Assay Office (building #79)

330 South Main Street

Breckenridge Historic District

Breckenridge, Colorado

*Summit Co.*

Photographer: Jan Radosevich

Date of Photograph: 1979

Negatives in possession of Colorado State

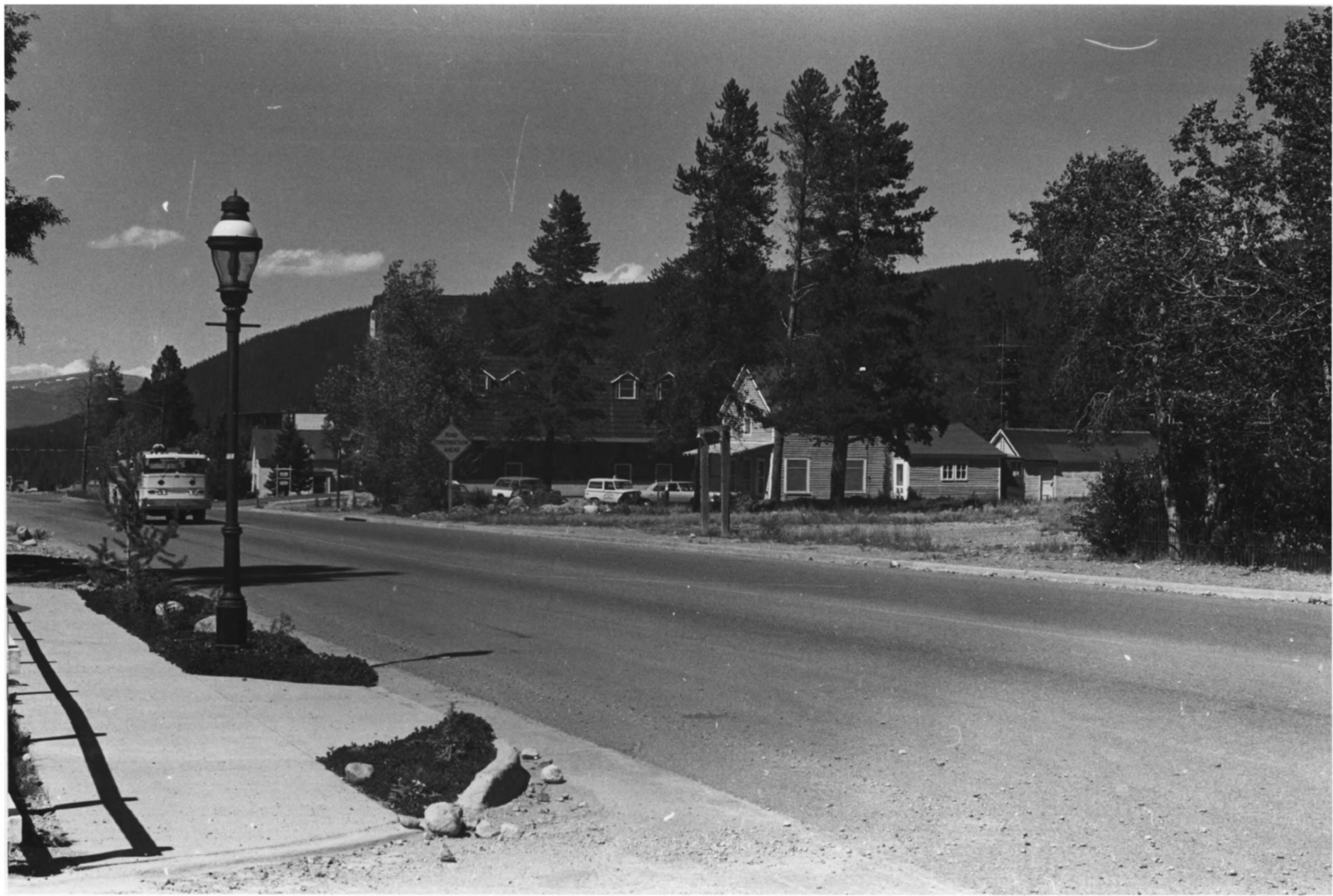
Historic Preservation Office

View: West (main) and south facades

Photographer looking northeasterly

*10736*

**JAN 29 1980**



Streetscape: east side of North Main Street  
Breckenridge Historic District *Summit Co.*  
Breckenridge, Colorado

Photographer: Jan Radosevich

Date of Photograph: 1979

Negatives in possession of Colorado State  
Historic Preservation Office

View: East side of Main Street

Photographer looking north

Photographer is standing near structure #2

*2 of 36*

JAN 29 1980





West Boundary

Breckenridge Historic District *Summit Co.*

Breckenridge, Colorado

Photographer: Jan Radosevich

Date of Photograph: 1979

Negatives in possession of Colorado State

Historic Preservation Office

View: West boundary

Photographer looking south

This view shows the Blue River running north  
and is typical of the entire west boundary  
of the district. *30736* JAN 29 1980



East Boundary

Breckenridge Historic District *Summit Co.*

Breckenridge, Colorado

Photographer: Jan Radosevich

Date of Photograph: 1979

Negatives in possession of Colorado State  
Historic Preservation Office

View: Looking south along French Street  
into the district

Photographer looking south

*40736*

JAN 29 1980







Streetscape: West side of Main Street  
looking north from building #25 (The  
Gallery)

Breckenridge Historic District *Summit Co.*

Breckenridge, Colorado

Photographer: Jan Radosevich

Date of Photograph: 1979

Negatives in possession of Colorado State  
Historic Preservation Office

View: East facades of various buildings

Photographer looking north

.....  
This photograph shows a combination of  
older, historic structures and modern,  
compatible buildings.

*50736*

**JAN 29 1980**



Streetscape and North Boundary  
Breckenridge Historic District

*Summit CO.*

Breckenridge, Colorado

Photographer: Jan Radosevich

Date of Photograph: 1979

Negatives in possession of Colorado State  
Historic Preservation Office

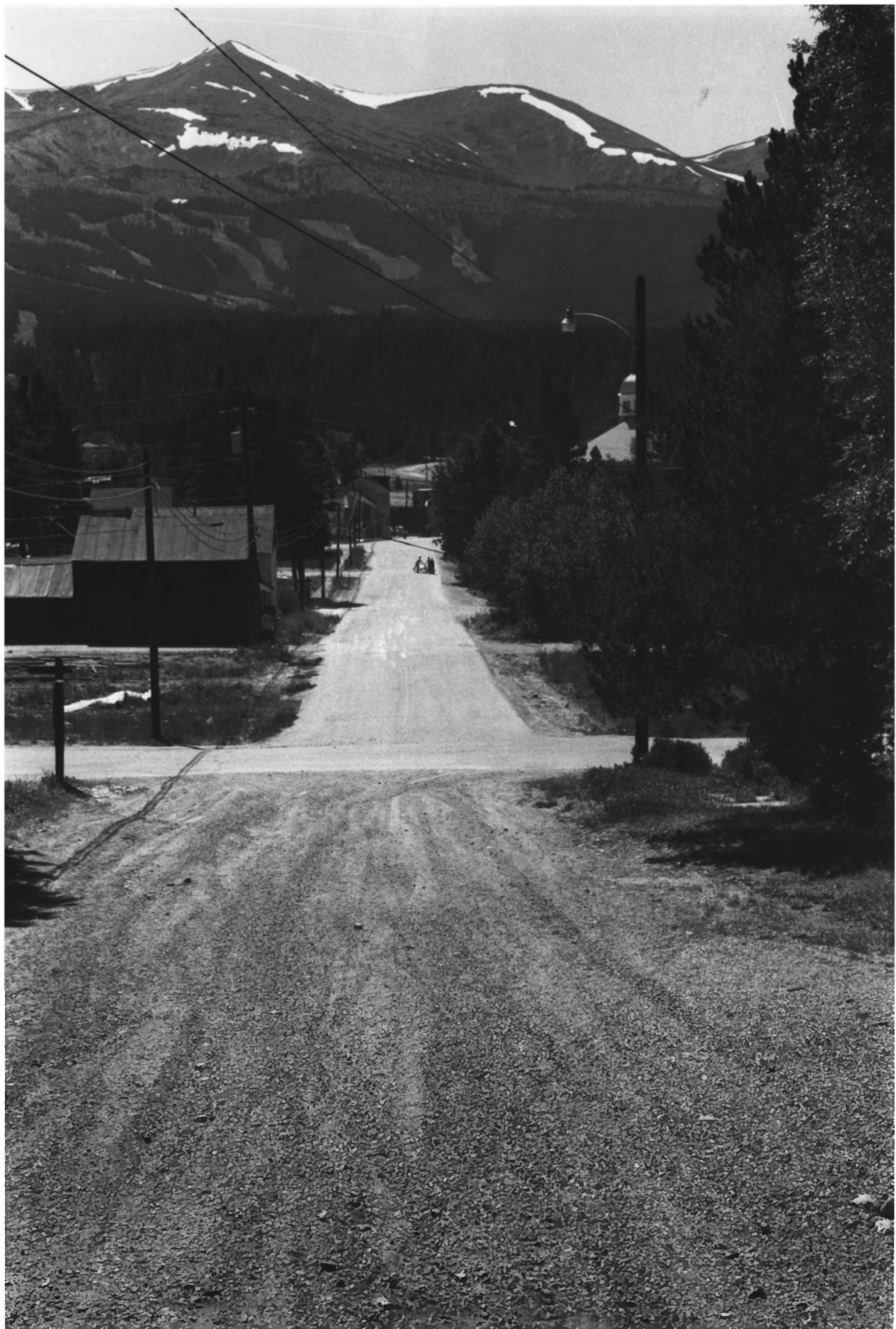
View: South along Main Street from north  
boundary

Photographer looking south

*60786*

**JAN 29 1980**





Streetscape: looking west along Lincoln  
Avenue from east boundary

Breckenridge Historic District *Summit Co.*

Breckenridge, Colorado

Photographer: Jan Radosevich

Date of Photograph: 1979

Negatives in possession of Colorado State

Historic Preservation Office

View: Streetscape looking west along  
Lincoln Avenue

Photographer looking west

The mountains and modern ski area appear  
beyond a short distance west of the  
district. The Summit County Court House  
may be seen in the right center.

70736

JAN 29 1980





Streetscape: East side of Main Street  
looking north from the Miller House  
(building #76)

Breckenridge Historic District *Summit Co.*

Breckenridge, Colorado

Photographer: Jan Radosevich

Date of Photograph: 1979

Negatives in possession of Colorado State  
Historic Preservation Office

View: East side of Main Street

Photographer looking northeasterly *80736*

This photograph shows a typical cluster of  
houses.

JAN 29 1980



Streetscape: looking north along French  
Street from the southern boundary

Breckenridge Historic District *Summit Co.*  
Breckenridge, Colorado

Photographer: Jan Radosevich

Date of Photograph: 1979

Negatives in possession of Colorado State  
Historic Preservation Office

View: Streetscape looking north along  
French Street

Photographer looking north

*9736*  
JAN 29 1980







Streetscape: east side of Main Street  
showing buildings 62, 63, 64, 65

Breckenridge Historic District  
Breckenridge, Colorado

*Summit Co.*

Photographer: Jan Radosevich

Date of Photograph: 1979

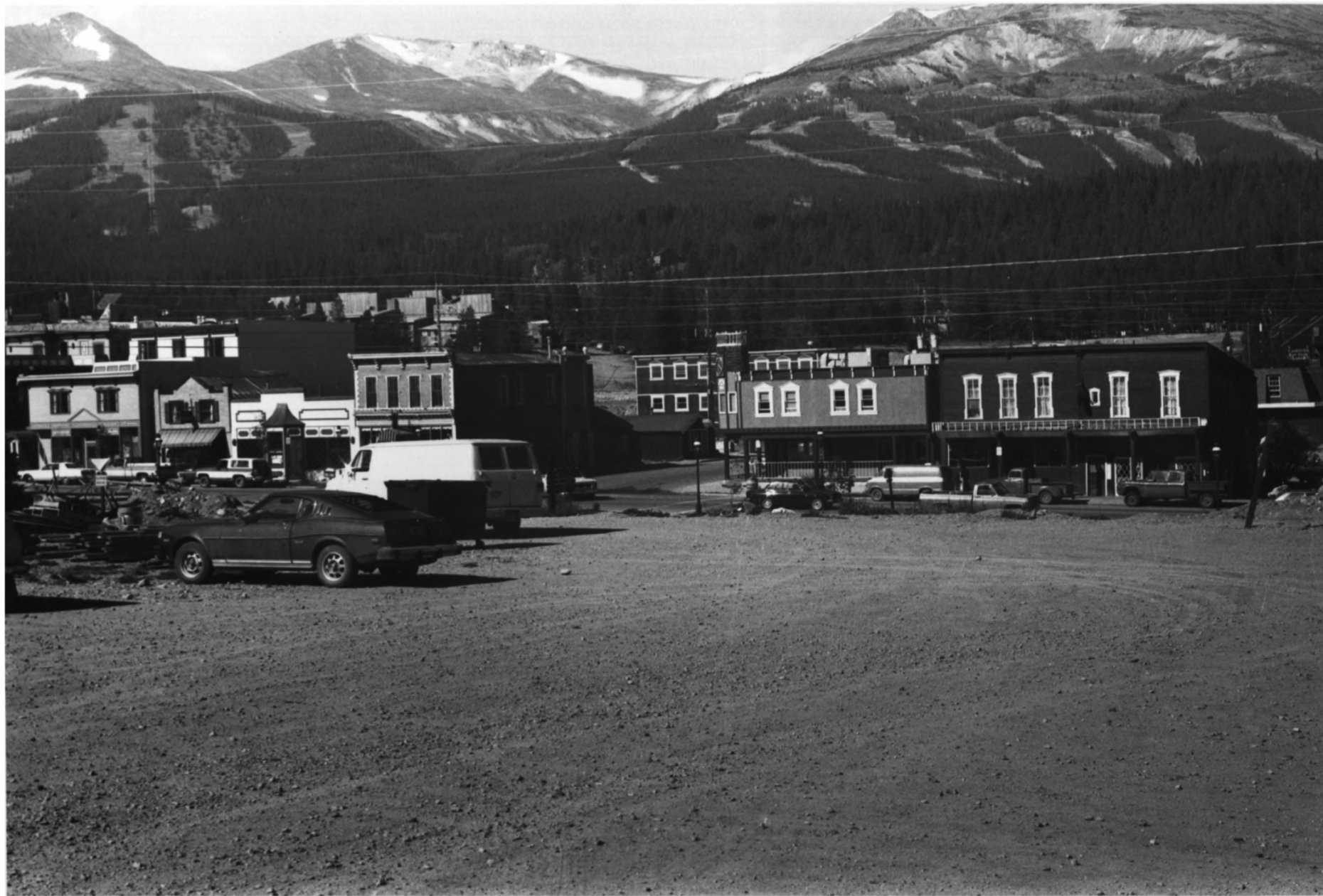
Negatives in possession of Colorado State  
Historic Preservation Office

View: East side of Main Street

Photographer looking south

*10 of 36*

**JAN 29 1980**



Streetscape: northern part of Main Street  
looking west

Breckenridge Historic District JAN 29 1980

Breckenridge, Colorado *Summit CO.*

Photographer: Jan Radosevich

Date of Photograph: 1979

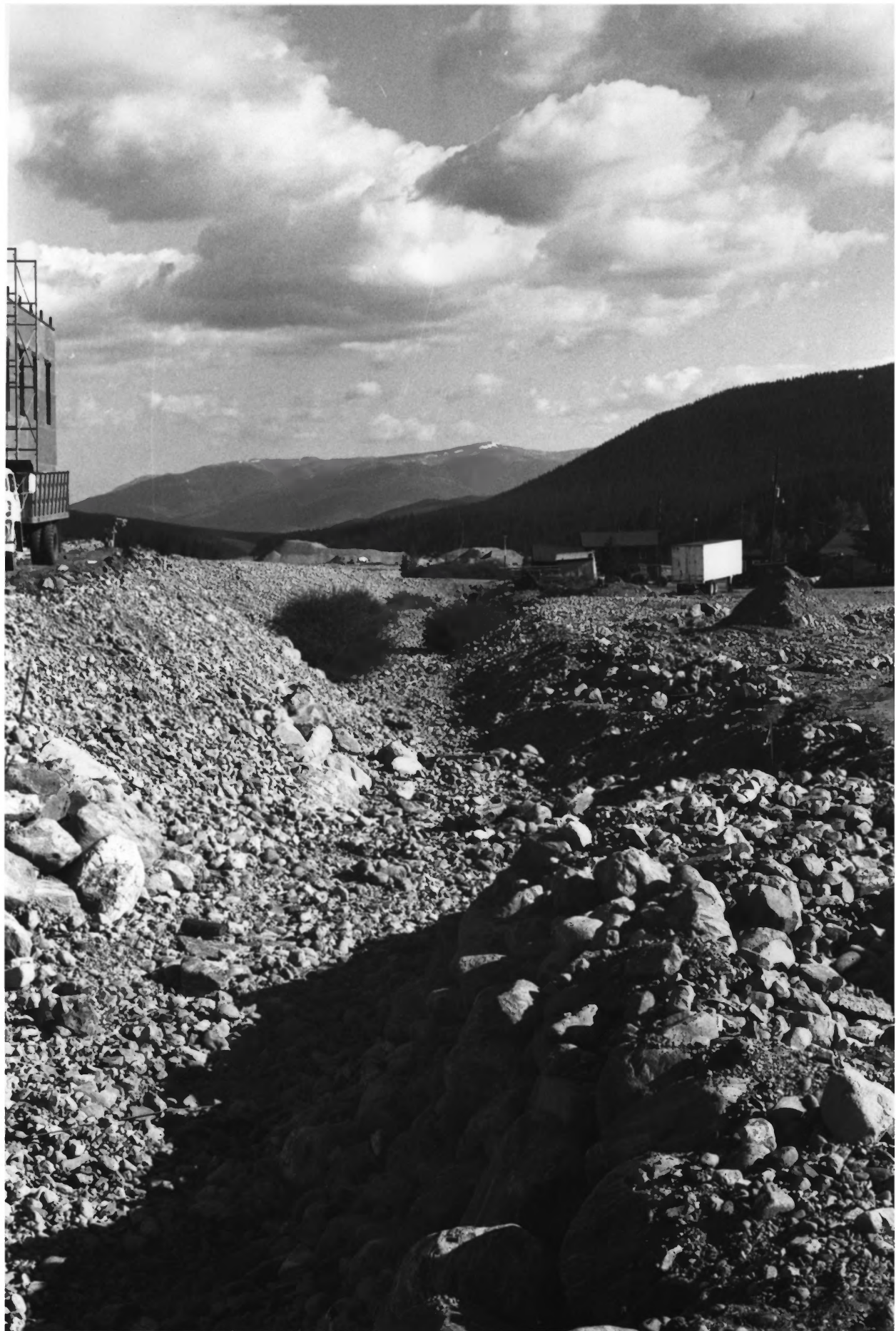
Negatives in possession of Colorado State  
Historic Preservation Office

View: Main Street

Photographer looking west

The ski areas appear in the background a  
short distance west of the district.

*11 of 36*



West Boundary: looking north from northern  
part of district

Breckenridge Historic District *Summit Co.*

Breckenridge, Colorado

Photographer: Jan Radosevich

Date of Photograph: 1979

Negatives in possession of Colorado State  
Historic Preservation Office

View: north

Photographer looking north

*12 of 36*

**JAN 29 1980**





Streetscape: west side of Main Street

showing buildings 9 through #14

Breckenridge Historic District

Breckenridge, Colorado

Photographer: Jan Radosevich

Date of Photograph 1979

Negatives in possession of Colorado State

Historic Preservation Office

View: West side of Main Street

Photographer looking: Northwesterly

*Summit Co.*  
**JAN 29 1980**

*13 of 36*



Forman-Otterson House (building #238)

Breckenridge Historic District *Summit Co.*

Breckenridge, Colorado

JAN 29 1980

Photographer: Jan Radosevich

Date of Photograph: 1979

Negatives in possession of Colorado State

Historic Preservation Office

View: West (main) facade

Photographer looking east

*14 of 36*





West Boundary: looking south from

Washington Avenue footbridge  
Breckenridge Historic District *Summit Co.*

Breckenridge, Colorado

Photographer: Jan Radosevich

Date of Photograph: 1979

Negatives in possession of Colorado State  
Historic Preservation Office

View: looking south from Washington  
Avenue footbridge

Photographer looking south

This view shows the Blue River dried up.

*15 of 36*

JAN 29 1980





THE  
EPISCOPAL CHURCH  
WELCOMES YOU

ST. JOHN'S  
EPISCOPAL  
CHURCH  
THE CHURCH OF  
ST. JOHN THE BAPTIST  
SIX CORNERS  
SUNDAY @ 9:00AM

FRENCH ST

LINCOLN ST

St. John the Baptist Episcopal Church

(building #168)

100 South French Street

Breckenridge Historic District

*Summit Co.*

Breckenridge, Colorado

Photographer: Jan Radosevich

Date of Photograph: 1979

Negatives in possession of Colorado State

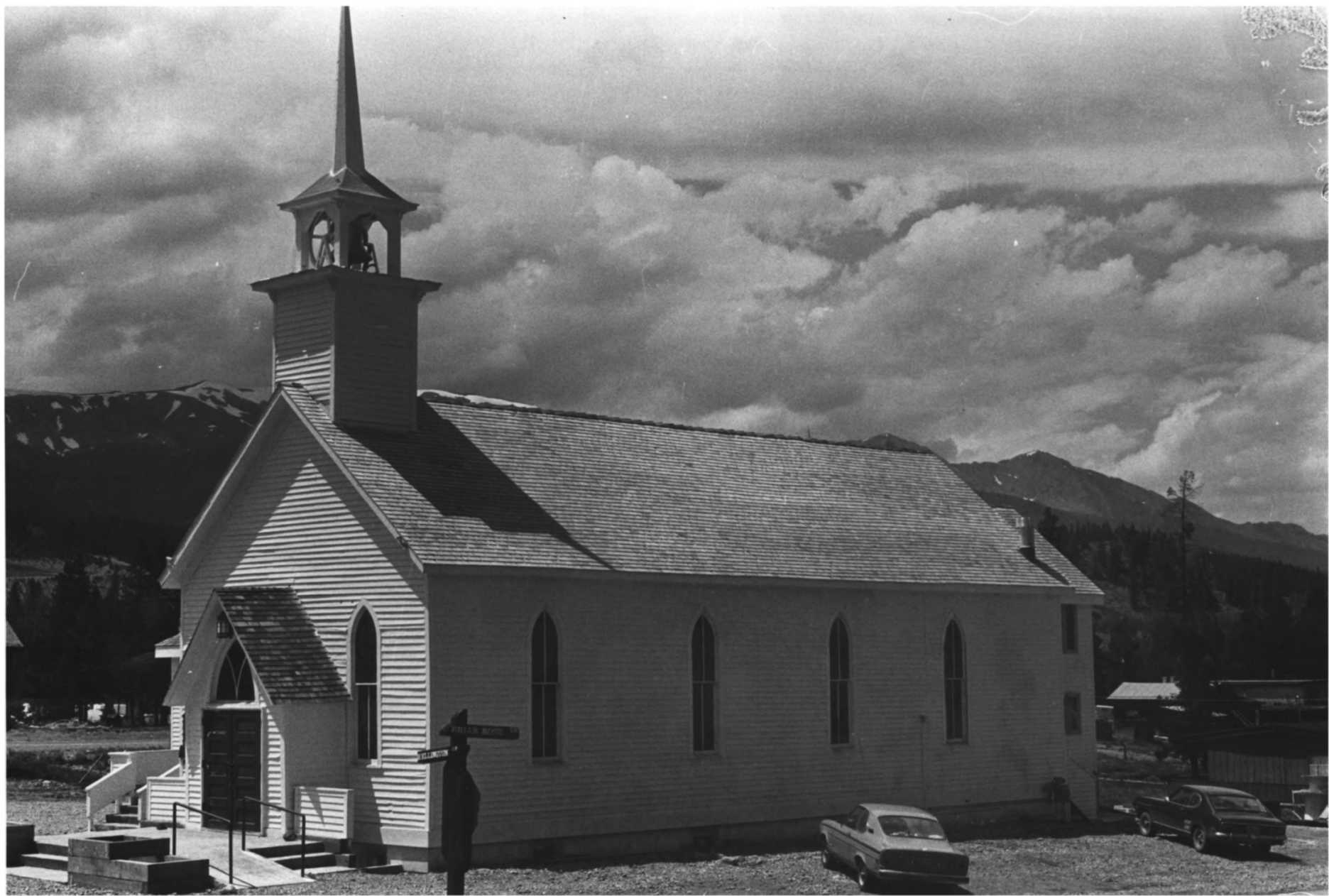
Historic Preservation Office

View: West (main) facade

Photographer looking east

**JAN 29 1980**  
*1608 36*





Father Dyer Episcopal Church (Bldg. #160)

310 Wellington

Breckenridge Historic District

*Summit Co.*

Breckenridge, Colorado

Photographer: Jan Radosevich

Date of Photograph: 1979

Negatives in possession of Colorado State

Historic Preservation Office

View: South and east facades

Photographer looking northwesterly

*17 of 36*

JAN 29 1980



Father Dyer Episcopal Church (Bldg #160)  
310 Wellington

Breckenridge Historic District

*Summit Co.*

Breckenridge, Colorado

Photographer: Jan Radosevich

Date of Photograph: 1979

Negatives in possession of Colorado State  
Historic Preservation Office

View: South (main) facade

Photographer looking north

This photograph shows the old, main church

on the right as well as the small, new  
addition added to the rear (left) in order  
to provide more meeting space.

*18 of 36*

JAN 28 1980





Summit County Court House (building #115)

200 Lincoln Avenue

Breckenridge Historic District

*Summit Co.*

Breckenridge, Colorado

Photographer: Jan Radosevich

Date of Photograph: 1979

Negatives in possession of Colorado State

Historic Preservation Office

View: South (main) and east facades

Photographer looking northwest

*19 of 36*

**JAN 29 1980**



John Porter Robinson House (building #108)

214 North Ridge Street

Breckenridge Historic District

*Summit Co.*

Breckenridge, Colorado

Photographer: Jan Radosevich

Date of Photograph: 1979

Negatives in possession of Colorado State

Historic Preservation Office

View: East (main) facade

Photographer looking west

*20 of 36*

**JAN 29 1980**





Roby House (building #109)

212 North Ridge Street

Breckenridge Historic District

*Summit Co.*

Breckenridge, Colorado

Photographer: Jan Radosevich

Date of Photograph: 1979

Negatives in possession of Colorado State

Historic Preservation Office

View: South and west facades

Photographer looking northeast

*21 of 36*

**JAN 29 1980**





213

Earl Knight House (building #134)

213 Lincoln Avenue

Breckenridge Historic District

*Summit Co.*

Breckenridge, Colorado

Photographer: Jan Radosevich

Date of Photograph: 1979

Negatives in possession of Colorado State

Historic Preservation Office

View: North (main) facade

Photographer looking south

*22 of 36*

JAN 29 1980





ST. MARY'S  
CATHOLIC CHURCH  
Parish founded  
1902  
Mass 10:00 AM  
Saturday 4:00 PM  
Sunday 7:00 AM - 9:00 AM

NO PARKING  
HERE  
ANY  
TIME

CHEVROLET

St. Mary's Catholic Church (building #138)

109 South French Street

Breckenridge Historic District *Summit Co.*

Breckenridge, Colorado

Photographer: Jan Radosevich

Date of Photograph: 1979

Negatives in possession of Colorado State

Historic Preservation Office

View: East (main) facade

Photographer looking west

*23 of 36* JAN 29 1980



SUN VALLEY INVESTMENT CO.  
RENTAL MANAGEMENT - REAL ESTATE

NO  
PARKING  
ZAM-648

NO  
PARKING

Charles A. Finding Store (Bldg. #60)

120 North Main Street

Breckenridge Historic District *Summit CO.*

Breckenridge, Colorado

Photographer: Jan Radosevich

Date of Photograph: 1979

Negatives in possession of Colorado State

Historic Preservation Office

View: West (main) facade

Photographer looking: east

*240836* **JAN 29 1980**





THE EXCHANGE 1898

NO  
PARKING

Engle Brothers Exchange Bank (building #116)  
100 South Ridge Street

Breckenridge Historic District  
Breckenridge, Colorado

*Summit Co.*

Photographer: Jan Radosevich

Date of Photograph: 1979

Negatives in possession of Colorado State  
Historic Preservation Office

View: North and West (main) facades

Photographer looking southeast

*25 of 36*

**JAN 29 1980**





Breckenridge Land & Cattle Company

(building #123)

200 South Ridge Street

Breckenridge Historic District *Summit CO.*

Breckenridge, Colorado

Photographer: Jan Radosevich

Date of Photograph: 1979

Negatives in possession of Colorado State

Historic Preservation Office

View: West (main) facade

Photographer looking east

*26 of 36*  
**JAN 29 1980**





Orville Dodge House (building #242)

Breckenridge Historic District *Summit Co.*

Breckenridge, Colorado

Photographer: Jan Radosevich

Date of Photograph: 1979

Negatives in possession of Colorado State

Historic Preservation Office

View: West (main) facade

Photographer looking east

*27 of 36*

**JAN 29 1980**



Scorberry House (building #247)

Breckenridge Historic District

Breckenridge, Colorado

Photographer: Jan Radosevich

Date of Photograph: 1979

Negatives in possession of Colorado State

Historic Preservation Office

View: West (main) facade

Photographer looking east

*Summit Co.*

**JAN 29 1980**

*28 of 36*





Falcon Apartments (building #249)

302 and 304 South High St.

Breckenridge Historic District

Breckenridge, Colorado

Photographer: Jan Radosevich

Date of Photograph: 1979

Negatives in possession of Colorado State

Historic Preservation Office

View: West (main) facade

Photographer looking east

This building is typical of modern intrusions  
detracting from the integrity of the district

JAN 29 1980

*Summit Co.*

*290736*



Munshaw House (building #235)

215 South High St.

Breckenridge Historic District

Breckenridge, Colorado

JAN '29 1980

Summit Co.

Photographer: Jan Radosevich

Date of Photograph: 1979

Negatives in possession of Colorado State

Historic Preservation Office

View: South facade

Photographer looking north

30 of 36





Fest Log Cabin

103 South High St.

Breckenridge Historic District

Breckenridge, Colorado

*Summit CO.*

Photographer: Jan Radosevich

Date of Photograph: 1979

Negatives in possession of Colorado State

Historic Preservation Office

View: South and east facades

Photographer looking westerly

*31 of 36*

**JAN 29 1980**



Colorado Mountain College (building #189)

103 South Harris Street

Breckenridge Historic District *Summit Co.*

Breckenridge, Colorado

Photographer: Jan Radosevich

Date of Photograph: 1979

Negatives in possession of Colorado State  
Historic Preservation Office

View: East facade

Photographer looking southerly

*32 of 36*

**JAN 29 1980**





Court Lisle House (building #181)

312 South French Street

Breckenridge Historic District

Breckenridge, Colorado

*Summit CO.*

Photographer: Jan Radosevich

Date of Photograph: 1979

Negatives in possession of Colorado State

Historic Preservation Office

View: West (main) facade

Photographer looking east

*33 of 36*

**JAN 29 1980**



Morton House (building #179)

204 South French Street

Breckenridge Historic District

Breckenridge, Colorado

*Summit Co.*

Photographer: Jan Radosevich

Date of Photograph: 1979

Negatives in possession of Colorado State

Historic Preservation Office

View: South and West facades

Photographer looking northeasterly

*34 of 36*

**JAN 29 1980**





Atchison House (building #202)

106 South Harris Street

Breckenridge Historic District *Summit Co.*  
Breckenridge, Colorado

Photographer: Jan Radosevich

Date of Photograph: 1979

Negatives in possession of Colorado State  
Historic Preservation Office

View: West (main) facade

Photographer looking east

*35 of 36*

**JAN 29 1980**



Renberger House (building #142)

203 South French Street

Breckenridge Historic District

*Summit Co.*

Breckenridge, Colorado

Photographer: Jan Radosevich

Date of Photograph: 1979

Negatives in possession of Colorado State

Historic Preservation Office

View: East (main) facade

Photographer looking west

*36 of 36*

**JAN 29 1980**