



CABLE CROSSING
DO NOT ANCHOR

1. ST. MARY'S CHURCH, SOUTH RIVER, N.J.

2. MIDDLESEX COUNTY, NEW JERSEY

7. 1 OF 34



1. ST. MARY'S CHURCH, SOUTH RIVER, N. J.

2. MIDDLESEX COUNTY, NEW JERSEY

7. 2 OF 34

ST. MARY'S
POLISH
R.C. CHURCH
1903

1. ST. MARY'S CHURCH, SOUTH RIVER, N. J.

2. MIDDLESEX COUNTY, NEW JERSEY

7. 3 OF 34



**SAINT MARY
OF OSTRABRAMA
ROMAN CATHOLIC CHURCH**
IN LOVING MEMORY OF MAURO "SKIP" SYLVESTER

MASS SCHEDULE
SATURDAY VIGIL MASS 5:00 PM
SUNDAY 8:30 AM, 10:00 AM, 11:30 AM (POLISH)
MONDAY - FRIDAY 7:00 AM, 8:00 AM
SATURDAY 8:00 AM
CONFESSION SAT. 10:30 - 11:30 AM & 4:00 PM

1. ST. MARY'S CHURCH, SOUTH RIVER, N.J.

2. MIDDLESSEX COUNTY, NEW JERSEY

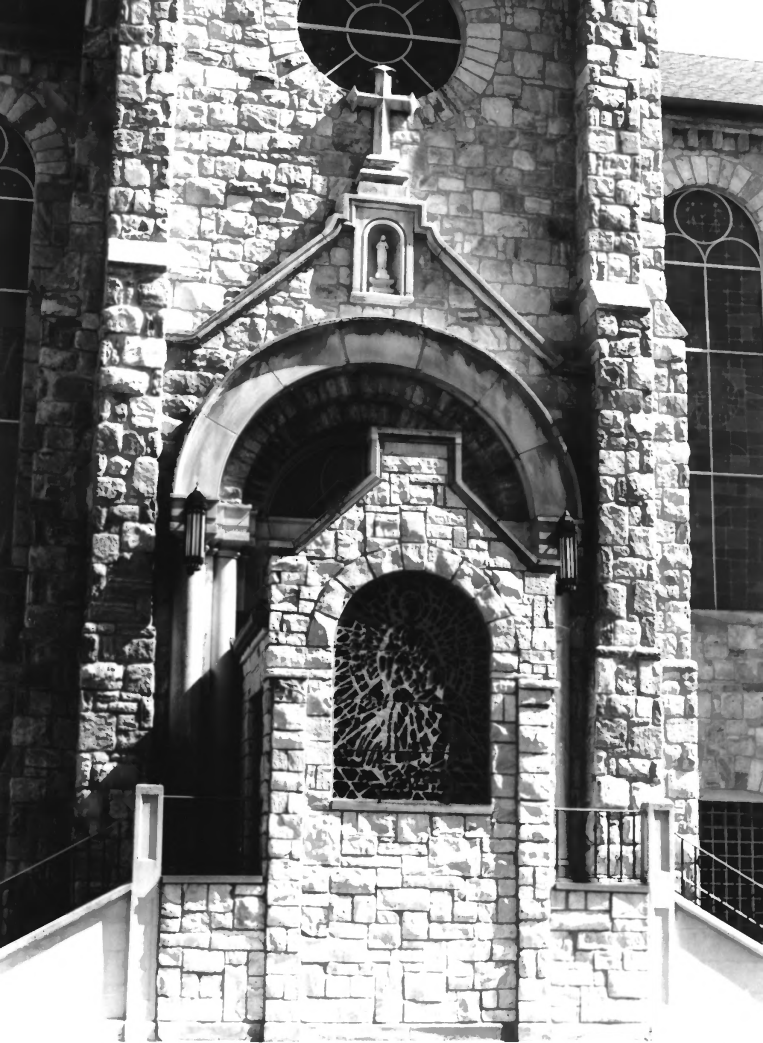
7. 4 OF 34



1. ST. MARY'S CHURCH, SOUTH RIVER, N.J.

2. MIDDLESEX COUNTY, NEW JERSEY

7. 5 OF 34



1. ST. MARY'S CHURCH, SOUTH RIVER, N.J.

2. MIDDLESEX COUNTY, NEW JERSEY

7. 6 OF 34



1. ST. MARY'S CHURCH, SOUTH RIVER, N.J.

2. MIDDLESEX COUNTY, NEW JERSEY

7. ? OF 34



1. ST. MARY'S CHURCH, SOUTH RIVER, N. J.

2. MIDDLESEX COUNTY, NEW JERSEY

7. 8 OF 34



1. ST. MARY'S CHURCH, SOUTH RIVER, N. J.

2. MOOLESKY COUNTY, NEW JERSEY

7. 9 OF 34



1. ST. MARY'S CHURCH, SOUTH RIVER, N. J.

2. MIDDLESEX COUNTY, NEW JERSEY

7 10 OF 34



1. ST. MARY'S CHURCH, SOUTH RIVER, N. J.

2. MIDDLESEX COUNTY, NEW JERSEY

7. 11 OF 34



1. ST. MARY'S CHURCH, SOUTH RIVER, N.J.

2. MIDDLESEX COUNTY, NEW JERSEY

7. 12 OF 34



1. ST. MARY'S CHURCH, SOUTH RIVER, N.J.

2. MIDDLESEX COUNTY, NEW JERSEY

7. 13 OF 34



1. ST. MARY'S CHURCH, SOUTH RIVER, N.J.

2. MIDDLESEX COUNTY, NEW JERSEY

7. 14 OF 34



1. ST. MARY'S CHURCH, SOUTH RIVER, N.J.

2. MIDDLESEX COUNTY, NEW JERSEY

7. 15 OF 34



1. ST. MARY'S CHURCH, SOUTH RIVER, N. J.

2. MIDDLESEX COUNTY, NEW JERSEY

7. 16 OF 34



1. ST. MARY'S CHURCH, SOUTH RIVER, N. J.

2. MIDDLESEX COUNTY, NEW JERSEY

7. 17 OF 34



1. ST. MARY'S CHURCH, SOUTH RIVER, N.J.

2. MIDDLESEX COUNTY, NEW JERSEY

7. 18 OF 34



1. ST. MARY'S CHURCH, SOUTH RIVER, N. J.

2. MIDDLESEX COUNTY, NEW JERSEY

7. 19 OF 34



1. ST. MARY'S CHURCH, SOUTH RIVER, N.J.

2. MIDDLESEX COUNTY, NEW JERSEY

7. 20 OF 34



1. ST MARY'S CHURCH, SOUTH RIVER, N.J.

2. MIDDLESEX COUNTY, NEW JERSEY

7. 21 OF 34



1. ST. MARY'S CHURCH, SOUTH RIVER, N. J.

2. MIDDLESEX COUNTY, NEW JERSEY

7. 22 OF 34



1. ST. MARY'S CHURCH, SOUTH RIVER, N.J.

2. MIDDLESEX COUNTY, NEW JERSEY

7. 23 OF 34



1. ST. MARY'S CHURCH, SOUTH RIVER, N.J.

2. MIDDLESEX COUNTY, NEW JERSEY

7. 24 OF 34



1. ST. MARY'S CHURCH, SOUTH RIVER, N.J.

2. MIDDLESEX COUNTY, NEW JERSEY

7. 25 OF 34



1. ST. MARY'S CHURCH, SOUTH RIVER, N. J.

2 MIDDLESEX COUNTY, NEW JERSEY

7. 26 OF 34



1. ST. MARY'S CHURCH, SOUTH RIVER, N.J.

2. MIDDLESEX COUNTY

7. 27 OF 34



1. ST. MARY'S CHURCH, SOUTH RIVER, N.J.

2. MIDDLESEX COUNTY, NEW JERSEY

7. 28 OF 34



1. ST. MARY'S CHURCH, SOUTH RIVER, N. J.

2. MIDDLESEX COUNTY, NEW JERSEY

7. 29 OF 34



1. ST. MARY'S CHURCH, SOUTH RIVER, N.J.

2. MIDDLESEX COUNTY

7. 30 OF 34



1. ST. MARY'S CHURCH, SOUTH RIVER, N.J.

2. MIDDLESEX COUNTY, NEW JERSEY

7. 31 OF 34



1. ST. MARY'S CHURCH, SOUTH RIVER, N.J.

2. MIDDLESEX COUNTY, NEW JERSEY

7. 32 OF 34



1. ST. MARY'S CHURCH, SOUTH RIVER, N. J.

2. MIDDLESEX COUNTY, NEW JERSEY

7. 33 OF 34



1. ST. MARY'S CHURCH, SOUTH RIVER, N.J.

2. MIDDLESEX COUNTY, NEW JERSEY

7. 34 OF 34