

The American Thermos Bottle Company Laurel Hill Plant

Norwich, CT

D. S. Plummer, 12/87

Photograph 1

Plant from West Side of River

Negative on file at CT Historical Commission

Hartford, CT



The American Thermos Bottle Company Laurel Hill Plant

Karen Bussalini, 12/57

Photograph 2

Office Building (Riverside)

Negative on file at Interdesign

Old Lyme, CT



The American Thermos Bottle Company Laurel Hill Plant

Norwich, CT

Dale S. Plummer, 12/87

Photograph 3

Interior Detail, Office Building Staircase

Negative on file at CT Historical Commission

Hartford, CT





American Thermos Bottle Company Laurel Hill Plant

Norwich, CT

D. S. Plummer, 12/87

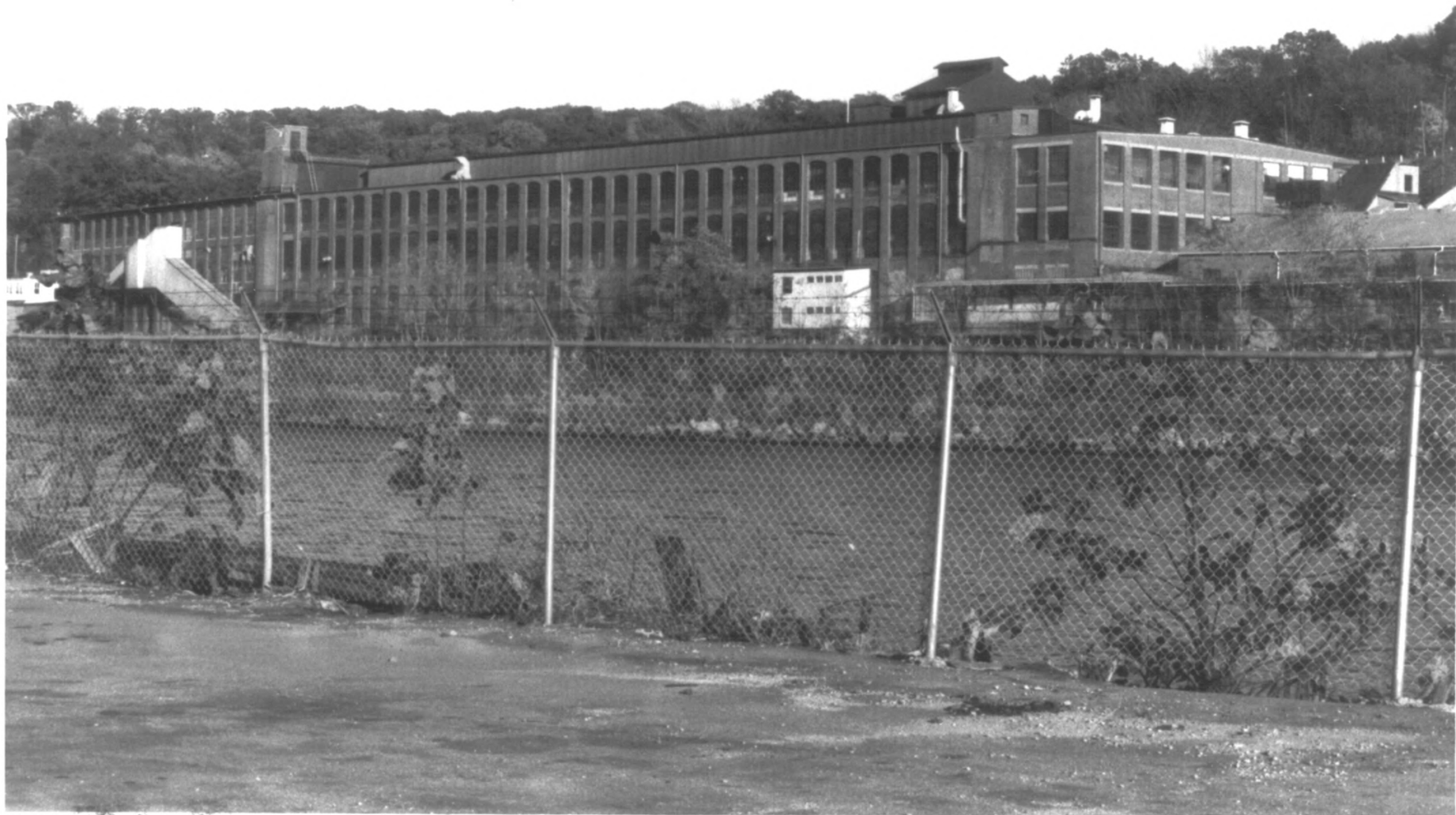
Photograph 4

Interior Detail, Moldings, Office Building

Negative on file at CT Historical Commission

Hartford, CT





The American Thermos Bottle Company Laurel Hill Plant

Norwich, CT

D. S. Plummer, 12/87

Photograph 5

West Side, Building 3

Negative on file at CT Historical Commission

Hartford, CT



POSITIVELY NO SMOKING  
OPEN FLAMES ALLOWED

The American Thermos Bottle Company Laurel Hill Plant  
Norwich, CT

Karen Bussolini, 12/87

Photograph 6

Detail of Tower; Building 3

Negative on file at Interdesign  
Old Lyme, CT



The American Thermos Bottle Company Laurel Hill Plant

Norwich, CT

Dale S. Plummer, 12/87

Photograph 7

Interior Detail, Post-and-Beam Construction, Second Floor, Building 3

Negative on file at CT Historical Commission

Hartford, CT







The American Thermos Bottle Company Laurel Hill Plant  
Norwich, CT

Dale S. Plummer, 2/88

Photograph 8

Interior, Second Floor, Building 3

Negative on file at CT Historical Commission

Hartford, CT



The American Thermos Bottle Company Laurel Hill Plant  
Norwich, CT

D.S. Plummer, 12/87

Photograph 9

Interior, Attic Story, Building 3

Negative on file at CT Historical Commission  
Hartford, CT



The American Thermos Bottle Company Laurel Hill Plant

Norwich, CT

D. S. Plummer, 2/88

Photograph 10

Enamelling Building (Personnel)

Negative on file at Connecticut Historical Commission

Hartford, CT





The American Thermos Bottle Company Laurel Hill Plant

Norwich, CT

D. S. Plummer, 2/88

Photograph 11

Engineering Building (Research & Development)

Negative on file at CT Historical Commission

Hartford, CT





The American Thermos Bottle Company Laurel Hill Plant

Norwich, CT

D. S. Plummer, 12/87

Photograph 12

50,000 Gallon Reservoir

Negative on file at CT Historical Commission

Hartford, CT



The American Thermos Bottle Company Laurel Hill Plant

Norwich, CT

D. S. Plummer, 2/88

Photograph 13

East Side, Building 2

Negative on file at CT Historical Commission

Hartford, CT





The American Thermos Bottle Company Laurel Hill Plant

Norwich, CT

D. S. Plummer, 2/88

Photograph 14

East Side, Building 1

Negative on file at CT Historical Commission

Hartford, CT





The American Thermos Bottle Company Laurel Hill Plant

Norwich, CT

D.S. Plummer, 2/88

Photograph 15

Rear, Carpenter Shop

Negative on file at CT Historical Commission

Hartford, CT



The American Thermos Bottle Company Laurel Hill Plant

Norwich, CT

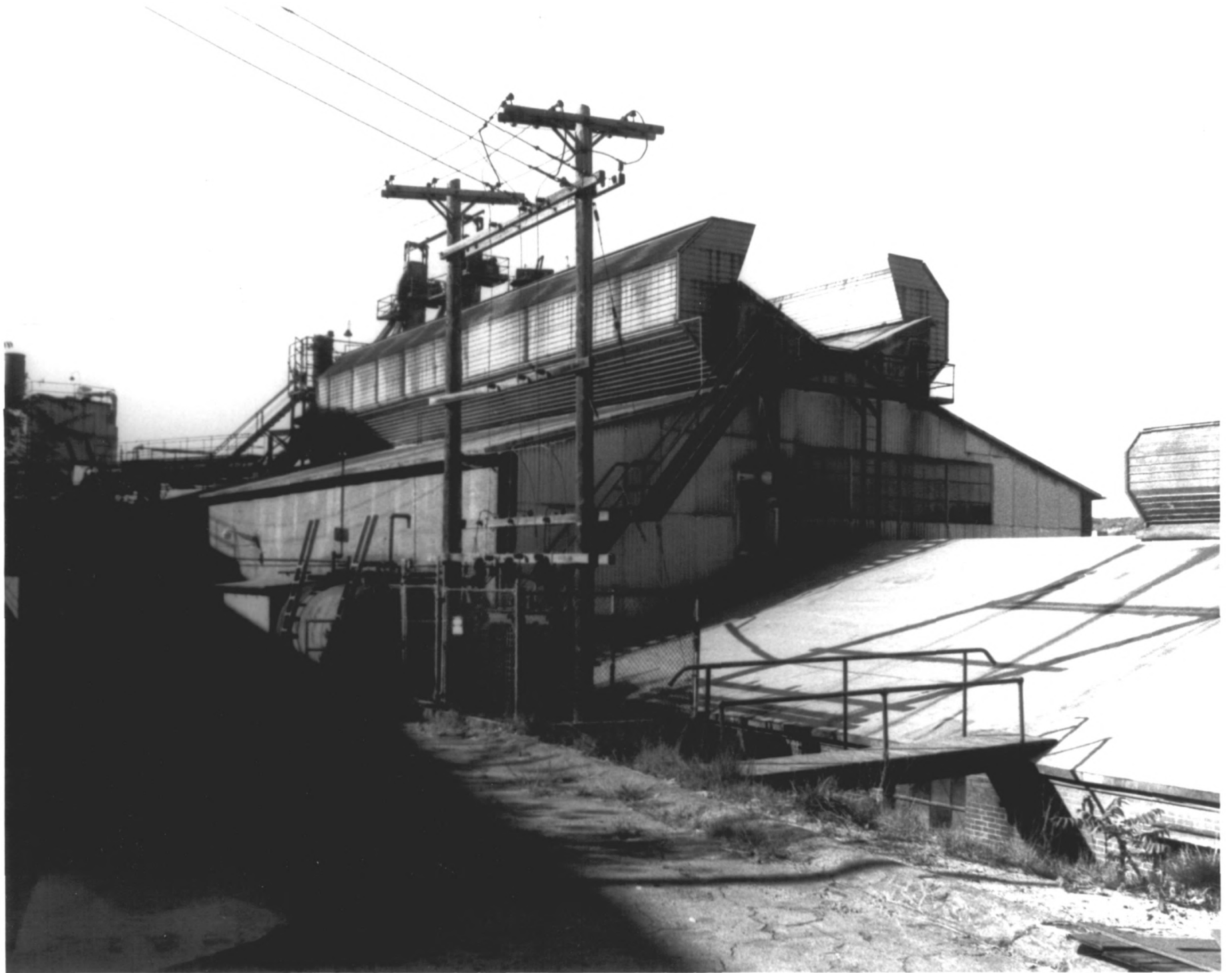
D.S. Plummer, 2/88

Photograph 16

Boiler House

Negative on file at CT Historical Commission

Hartford, CT



The American Thermos Bottle Company Laurel Hill Plant

Norwich, CT

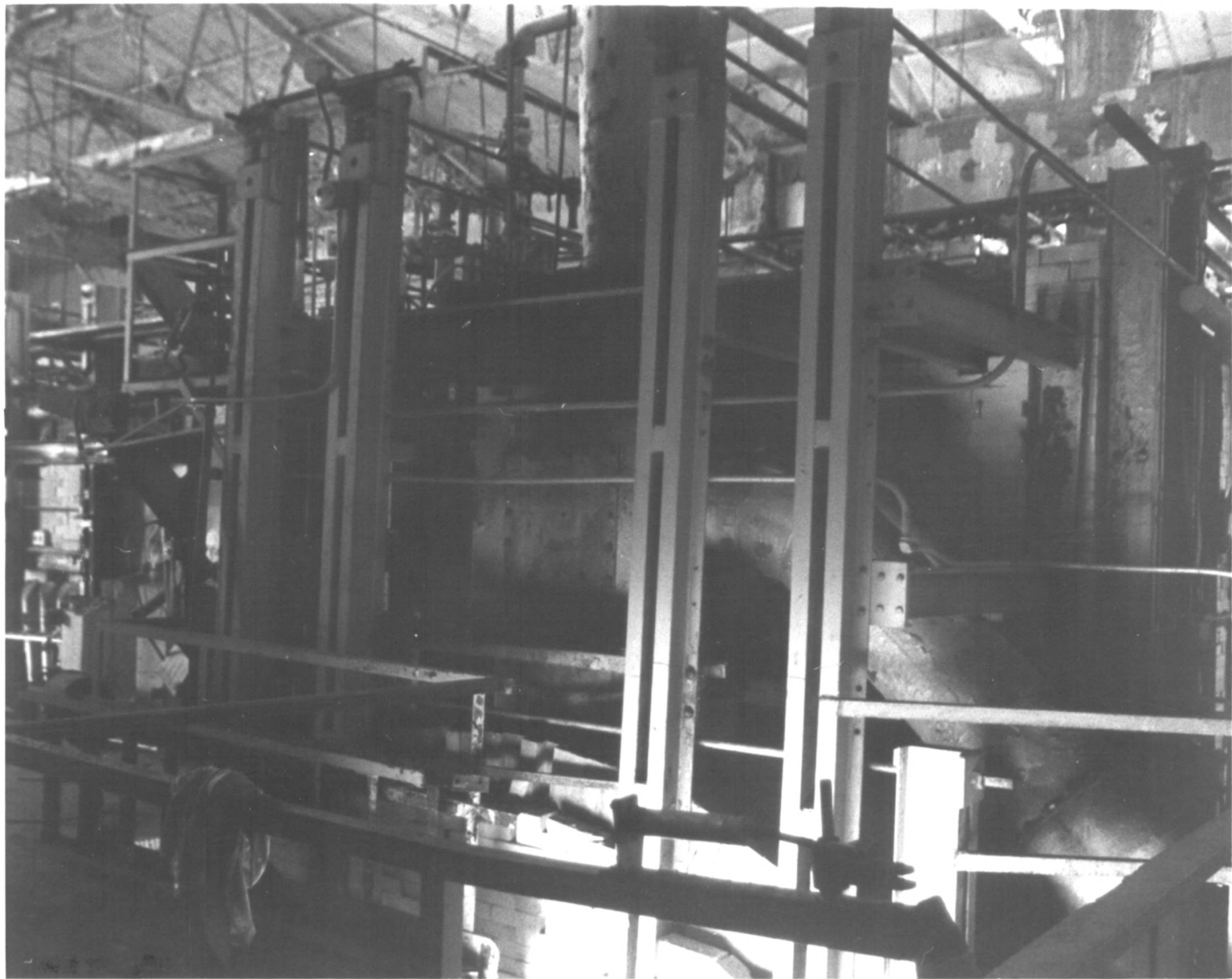
D. S. Plummer, 12/87

Photograph 17

Glass House 1

Negative on file at CT Historical Commission

Hartford, CT



The American Thermos Bottle Company Laurel Hill Plant

Norwich, CT

D.S. Plummer, 2/88

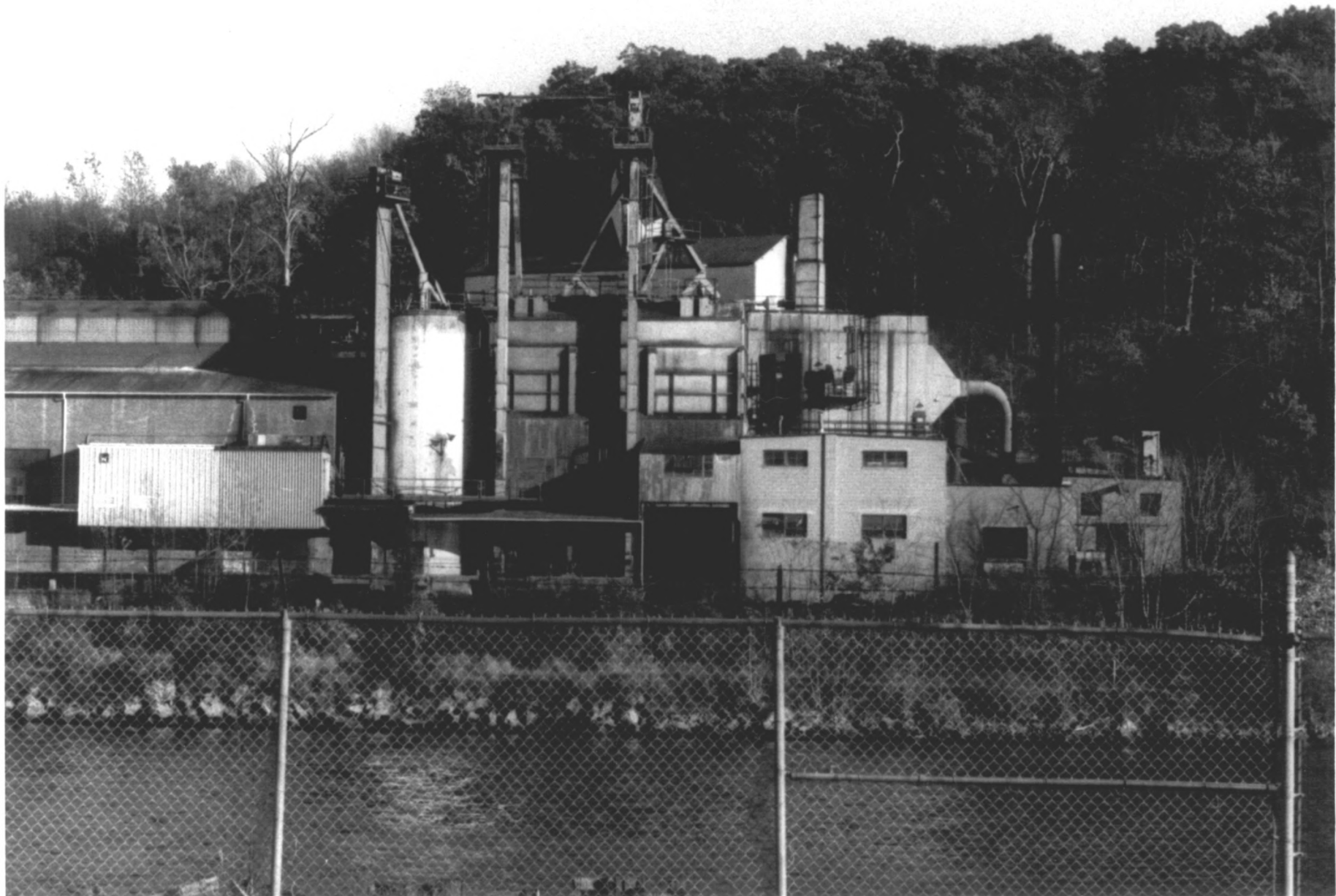
Photograph 18

Regenerative Continuous Tank Furnace, Glass House 1

Negative on file at CT Historical Commission

Hartford, CT





The American Thermos Bottle Company Laurel Hill Plant

Norwich, CT

D. S. Plummer, 12/87

Photograph 19

Cullet and Mix House, Compression and Auxilliary Generator House

Negative on file at Connecticut Historical Commission

Hartford, CT



 MikroPul  
DRY ELECTROSTATIC  
PRECIPITATOR

The American Thermos Bottle Company Laurel Hill Plant

Norwich, CT

Karen Bussoline, 12/87

Photograph 20

Electrostatic Precipitator

Negative on file at CT Historical Commission

Hartford, CT



The American Thermos Bottle Company Laurel Hill Plant  
Norwich, CT

D. S. Plummer, 2/88

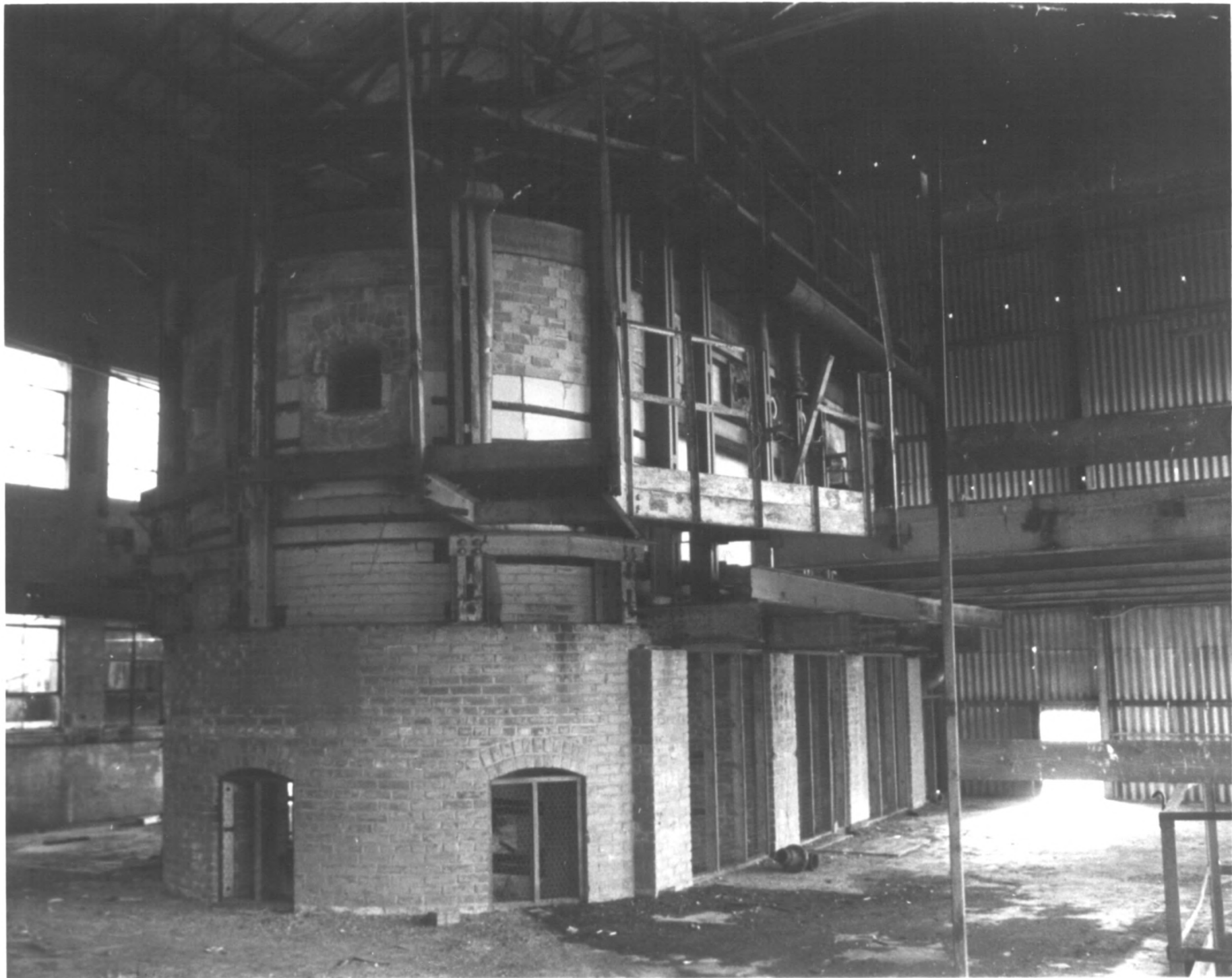
Photograph 21

Glass House 2

Negative on file at CT Historical Commission

Hartford, CT





The American Thermos Bottle Company Laurel Hill Plant

Norwich, CT

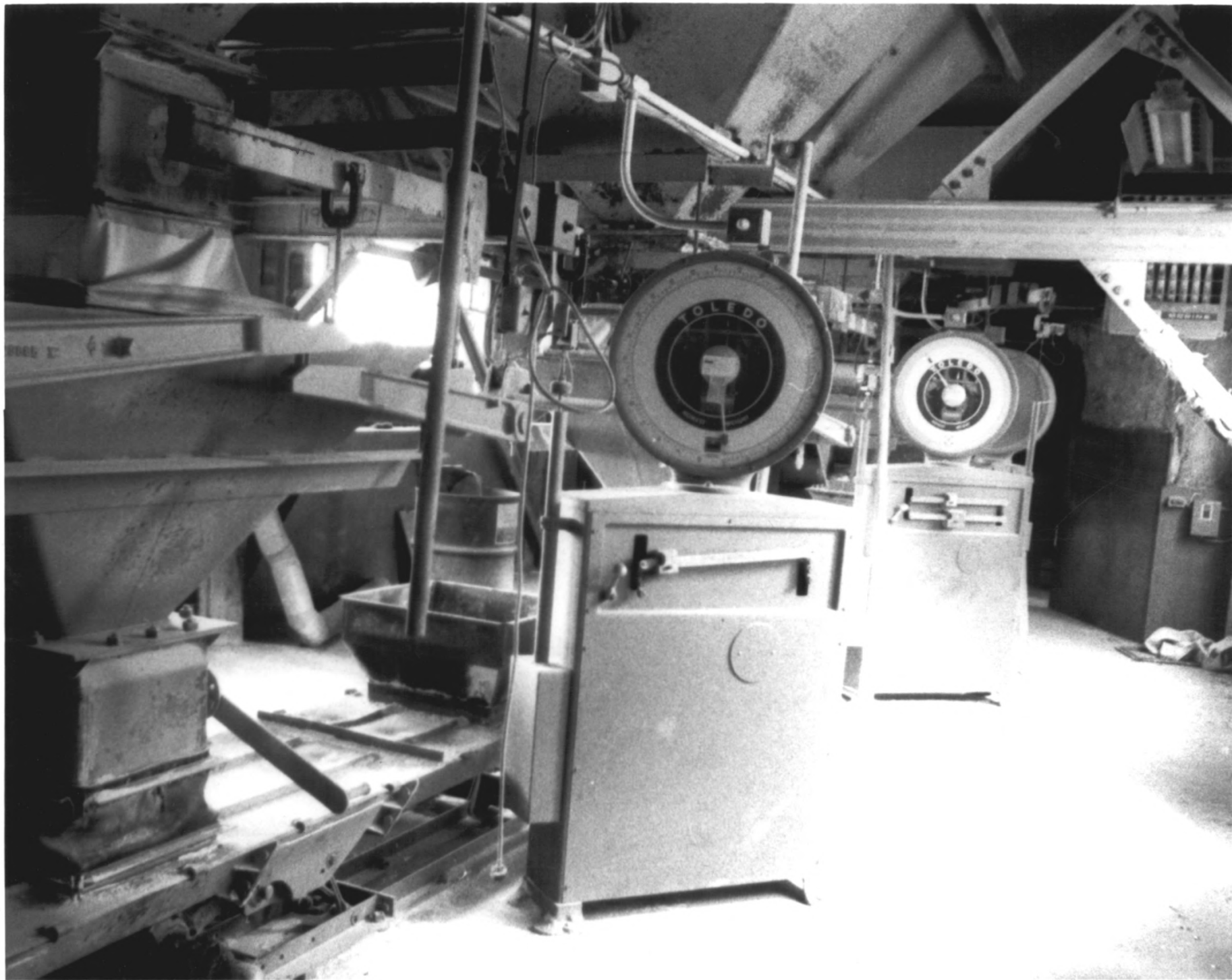
D. S. Plummer, 2/88

Photograph 22

Regenerative Continuous Tank Furnace, Glass House 2

Negative on file at CT Historical Commission

Hartford, CT



The American Thermos Bottle Company Laurel Hill Plant

Norwich, CT

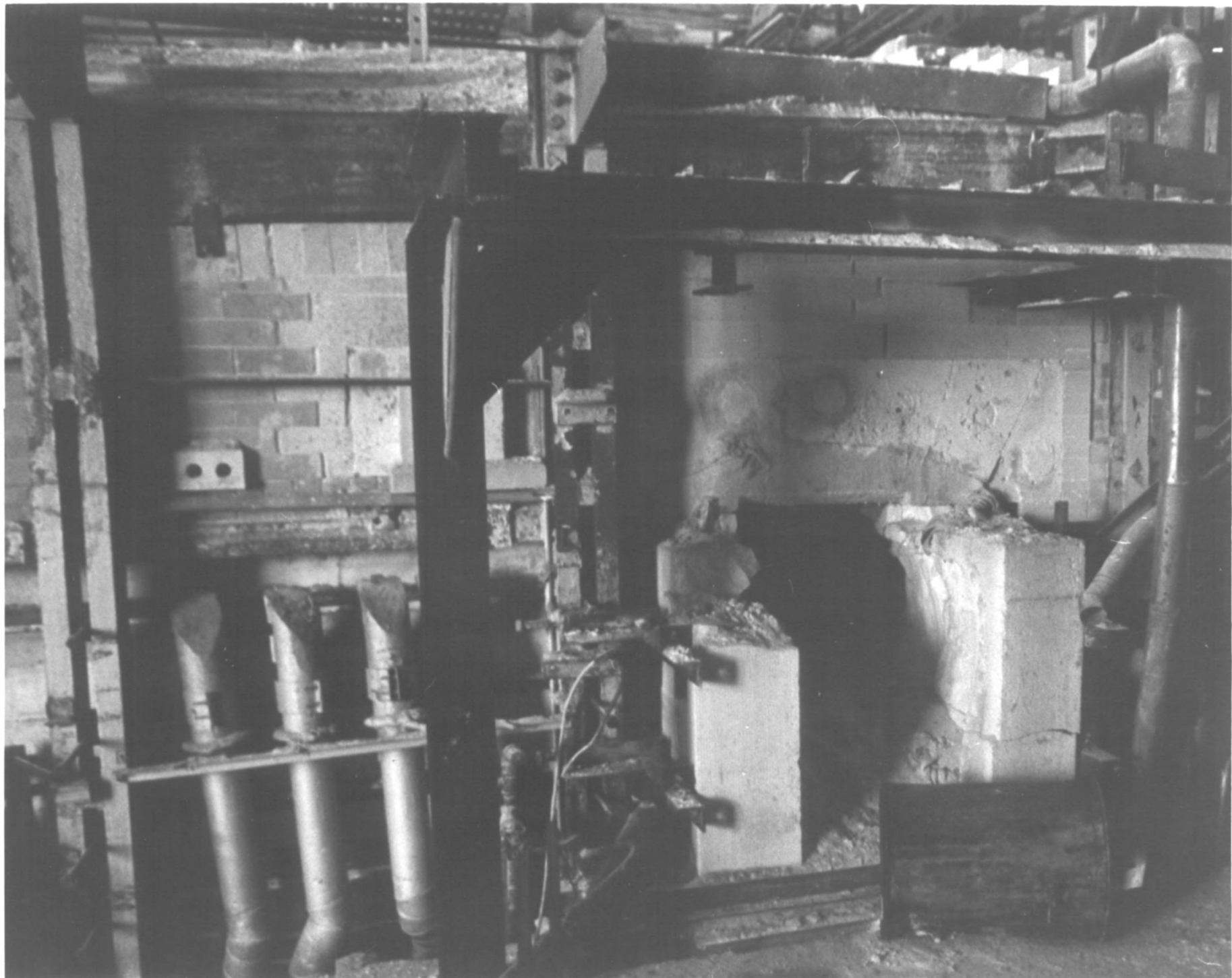
D. S. Plummer, 12/87

Photograph 23

Interior, Cullet and Mix House

Negative on file at CT Historical Commission

Hartford, CT





The American Thermos Bottle Company Laurel Hill Plant

Norwich, CT

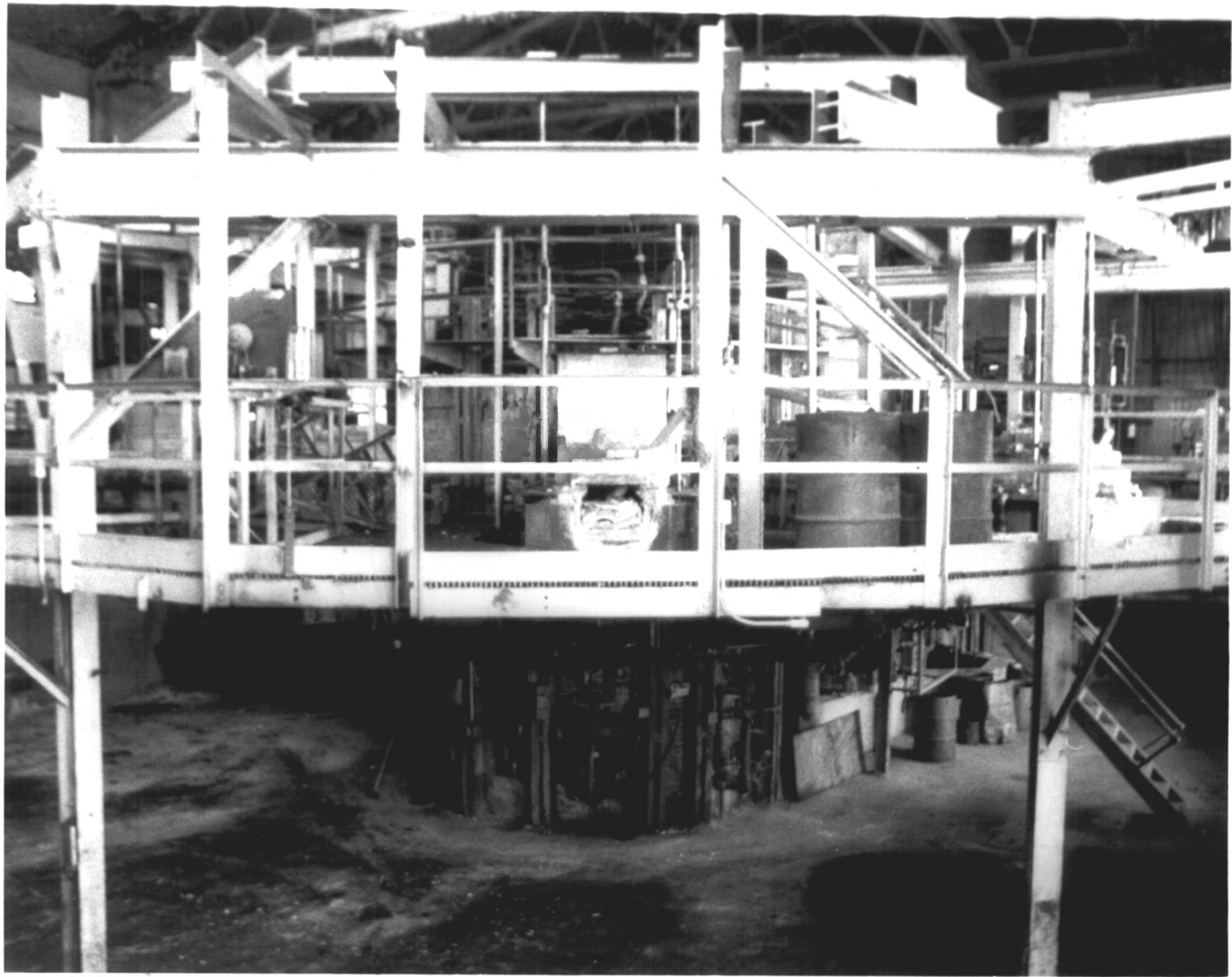
Dale S. Plummer, 2/88

Photograph 24

Detail, Charging Opening, Regenerative Continuous  
Tank Furnace

Negative on file at CT Historical Commission  
Hartford, CT





The American Thermos Bottle Company Laurel Hill Plant

Norwich, CT

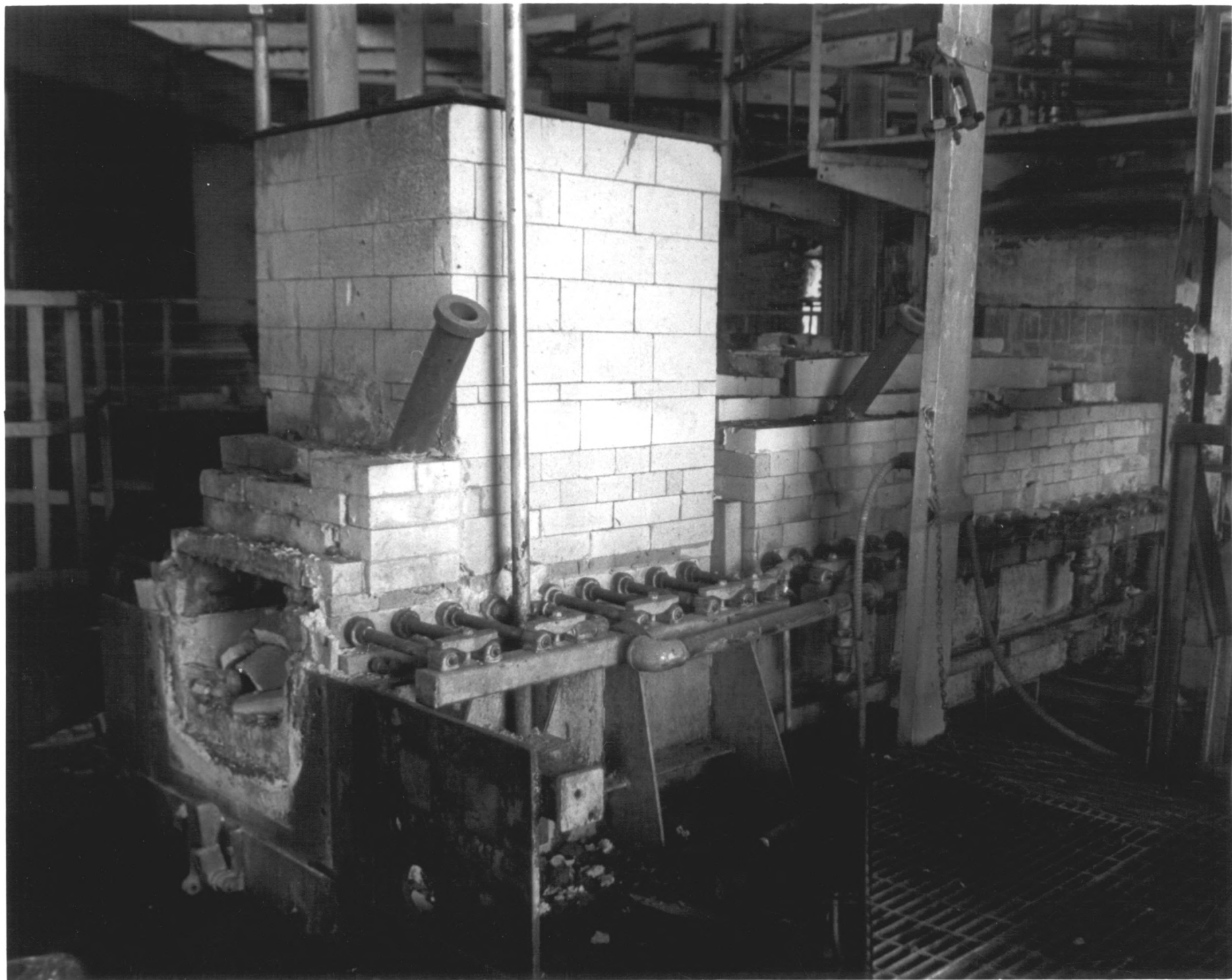
D. S. Plummer, 12/87

Photograph 25

Refining End, Regenerative Continuous Glass Tank

Negative on file at CT Historical Commission

Hartford, CT



The American Thermos Bottle Company Laurel Hill Plant

Norwich, CT

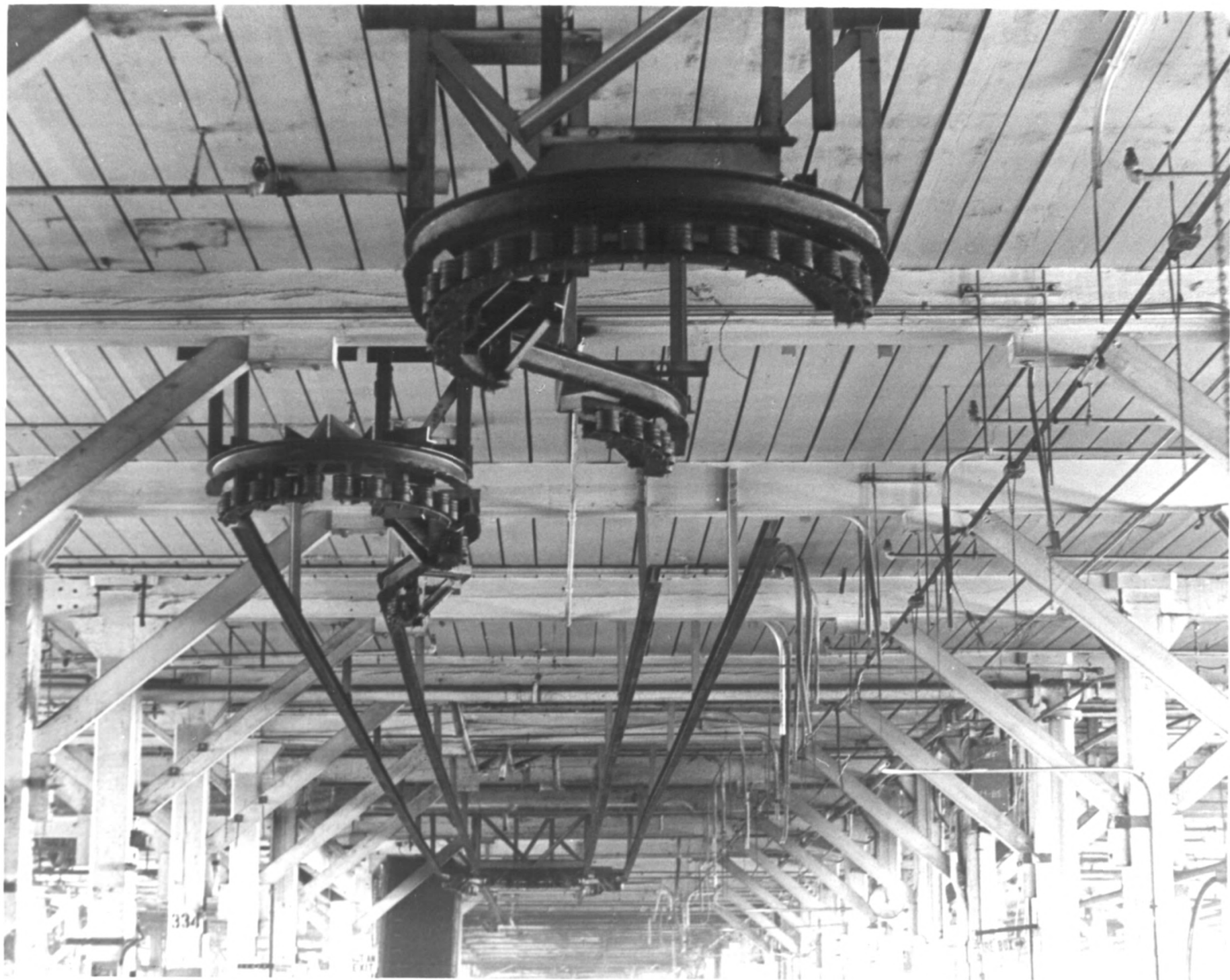
D.S. Plummer, 2/88

Photograph 26

Feeder, Regenerative Continuous Tank Furnace

Negative on file at CT Historical Commission

Hartford, CT



The American Thermos Bottle Company Laurel Hill Plant  
Norwich, CT

D.S. Plummer, 2/88

Photograph 27

Detail, Conveyor System, Third Floor, Building 3

Negative on file at CT Historical Commission  
Hartford, CT