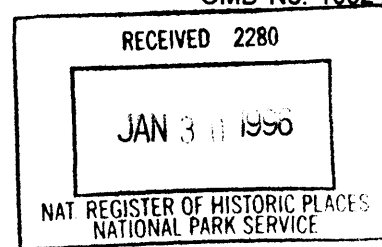


United States Department of the Interior
National Park Service



National Register of Historic Places Registration Form

This form is for use in nominating or requesting determination for individual properties and districts. See instruction in *How to Complete the National Register of Historic Places Registration Form* (National Register Bulletin 16A). Complete each item by marking "x" in the appropriate box or by entering the information requested. If an item does not apply to the property being documented, enter "N/A" for "not applicable." For functions, architectural classification, materials and areas of significance, enter only categories and subcategories from the instructions. Place additional entries and narrative items on continuation sheets (NPS Form 10-900a). Use a typewriter, word processor, or computer, to complete all items.

1. Name of Property

historic name Dumont School

other names/site number 5CC654

2. Location

street & number 150 County Road 260 [N/A] not for publication

city or town Dumont [N/A] vicinity

state Colorado code CO county Clear Creek code 019 zip code 80436

3. State/Federal Agency Certification

As the designated authority under the National Historic Preservation Act, as amended, I hereby certify that this nomination request for determination of eligibility meets the documentation standards for registering properties in the National Register of Historic Places and meets the procedural and professional requirements set forth in 36 CFR Part 60. In my opinion, the property meets does not meet the National Register criteria. I recommend that this property be considered significant nationally statewide locally.
(See continuation sheet for additional comments [].)

[Signature] State Historic Preservation Officer January 25, 1996
Signature of certifying official/Title Date

State Historic Preservation Office, Colorado Historical Society
State or Federal agency and bureau

In my opinion, the property meets does not meet the National Register criteria.
(See continuation sheet for additional comments [].)

Signature of certifying official/Title Date

State or Federal agency and bureau

4. National Park Service Certification

I hereby certify that the property is:

entered in the National Register
See continuation sheet [].

determined eligible for the
National Register
See continuation sheet [].

determined not eligible for the
National Register.

removed from the
National Register

other, explain
See continuation sheet [].

[Signature] Signature of the Keeper Date
Edson H. Beall 3/1/96
National Register

Dumont School
Name of Property

Clear Creek County, CO
County/State

5. Classification

Ownership of Property
(Check as many boxes as apply)

- private
- public-local
- public-State
- public-Federal

Category of Property
(Check only one box)

- building(s)
- district
- site
- structure
- object

Number of Resources within Property
(Do not count previously listed resources.)

Contributing	Noncontributing	
2	1	buildings
		_____ sites
		_____ structures
		_____ objects
2	1	Total

Name of related multiple property listing.
(Enter "N/A" if property is not part of a multiple property listing.)

N/A

Number of contributing resources previously listed in the National Register.

0

6. Function or Use

Historic Function
(Enter categories from instructions)

EDUCATION: school

Current Functions
(Enter categories from instructions)

SOCIAL: meeting hall

7. Description

Architectural Classification
(Enter categories from instructions)

LATE VICTORIAN: Italianate

Materials
(Enter categories from instructions)

foundation CONCRETE
walls BRICK

roof ASPHALT
other METAL: tin

Narrative Description
(Describe the historic and current condition of the property on one or more continuation sheets.)

Dumont School
Name of Property

Clear Creek County, CO
County/State

8. Statement of Significance

Applicable National Register Criteria

(Mark "x" in one or more boxes for the criteria qualifying the property for National Register listing.)

A Property is associated with events that have made a significant contribution to the broad patterns of our history

B Property is associated with the lives of persons significant in our past.

C Property embodies the distinctive characteristics of a type, period, or method of construction or represents the work of a master, or possesses high artistic values, or represents a significant and distinguishable entity whose components lack individual distinction.

D Property has yielded, or is likely to yield, information important in prehistory or history.

Criteria Considerations

(Mark "x" in all the boxes that apply.)

Property is:

A owned by a religious institution or used for religious purposes.

B removed from its original location.

C a birthplace or grave.

D a cemetery.

E a reconstructed building, object, or structure.

F a commemorative property.

G less than 50 years of age or achieved significance within the past 50 years.

Narrative Statement of Significance

(Explain the significance of the property on one or more continuation sheets.)

9. Major Bibliographic References

Bibliography

(Cite the books, articles and other sources used in preparing this form on one or more continuation sheets.)

Previous documentation on file (NPS):

preliminary determination of individual listing (36 CFR 67) has been requested

previously listed in the National Register

previously determined eligible by the National Register

designated a National Historic Landmark

recorded by Historic American Buildings Survey

recorded by Historic American Engineering Record

Areas of Significance

(Enter categories from instructions)

ARCHITECTURE

EDUCATION

COMMUNITY PLANNING AND DEVELOPMENT

Periods of Significance

1909 - 1945

Significant Dates

N/A

Significant Person(s)

(Complete if Criterion B is marked above).

N/A

Cultural Affiliation

N/A

Architect/Builder

Keys, George

Primary location of additional data:

State Historic Preservation Office

Other State Agency

Federal Agency

Local Government

University

Other:

Name of repository:

Clear Creek Archives, Georgetown

Dumont School
Name of Property

Clear Creek County, CO
County/State

10. Geographical Data

Acreeage of Property less than one acre

UTM References

(Place additional UTM references on a continuation sheet.)

1.	13	448310	4401710	3.			
	Zone	Easting	Northing		Zone	Easting	Northing

2.				4.			
	Zone	Easting	Northing		Zone	Easting	Northing

[] See continuation sheet

Verbal Boundary Description

(Describe the boundaries of the property on a continuation sheet.)

Boundary Justification

(Explain why the boundaries were selected on a continuation sheet.)

11. Form Prepared By

name/title Christine A. Bradley/ Archivist
organization Clear Creek County date 12/08/94
street & number PO Box 2000 telephone 303-534-5777x257
city or town Georgetown state Colorado zip code 80444

Additional Documentation

Submit the following items with the completed form:

Continuation Sheets

Maps

- A **USGS map** (7.5 or 15 minute series) indicating the property's location.
- A **Sketch map** for historic districts and properties having large acreage or numerous resources.

Photographs

Representative **black and white photographs** of the property.

Additional Items

(Check with the SHPO or FPO for any additional items)

Property Owner

(Complete this item at the request of SHPO or FPO.)

name Mill Creek Valley Historical Society, c/o Trudy Rapp
street & number PO Box 143 telephone 303-567-2204
city or town Dumont state Colorado zip code 80436

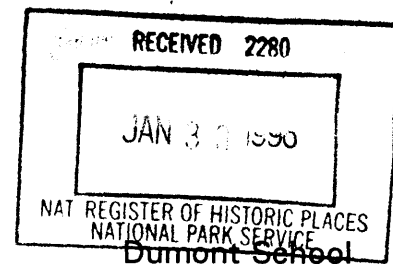
Paperwork Reduction Act Statement: This information is being collected for applications to the National Register of Historic Places to nominate properties for listing or determine eligibility for listing, to list properties, and to amend existing listings. Response to this request is required to obtain a benefit in accordance with the National Historic Preservation Act, as amended (16 U.S.C. 470 *et seq.*).

Estimated Burden Statement: Public reporting burden for this form is estimated to average 18.1 hours per response including time for reviewing instructions, gathering and maintaining data, and completing and reviewing the form. Direct comments regarding this burden estimate or any aspect of this form to the Chief, Administrative Services Division, National Park Service, P.O. Box 37127, Washington, DC 20013-7127; and the Office of Management and Budget, Paperwork Reductions Projects (1024-0018), Washington, DC 20503.

United States Department of the Interior
National Park Service

National Register of Historic Places
Continuation Sheet

Section number 7 Page 1



Dumont School
Clear Creek County, CO

DESCRIPTION

Dumont School, constructed in 1909, sits between a county road on the north and the frontage road for Interstate 70 on the south, and between two large commercial operations (Public Service Company of Colorado and a series of small storage warehouses). The schoolhouse and a small privy form an historic oasis enclosed on three sides with the original iron and wire fencing. The light tan brick, one story school building is a t-shaped plan with hipped roof and a two-story entry bell tower with pyramidal roof. The tall narrow windows have brick sills and are topped by half-round triple rowlock arches. The roof eaves are decorated by brackets and a single, hipped roof dormer occupies the east elevation. The interior consists of a single large classroom with full length stage across one end. Original blackboards and wainscotting cover the walls and the original hardwood floors remain intact.

Dumont School faces to the north and sits back approximately 35 feet from Clear Creek County Road 260. Fencing encloses the 175' x 125' lot on all four sides. The west, north and south sides are bordered by the original iron and wire fencing. The remaining enclosure is made by a length of chain link fence built along the highway right-of-way to the south. In addition to the contributing school and privy, the site also contains a collection of old and new playground equipment, picnic benches, and the noncontributing, ca. 1870, Coburn log cabin. Scattered deciduous and coniferous trees stand as reminders of past Arbor Day plantings by Dumont School students.

School Building

The schoolhouse is constructed of light tan brick on a concrete foundation. The building is t-shaped with the large cross piece forming a single classroom. The shaft contains the entry hall and office. A two story bell tower rises from the entry. A hipped roof storage addition is attached to the southwest corner of the building. The hipped roof is covered with asphalt shingles and the pyramidal roof over the bell tower is covered by pressed tin and topped by a decorative finial. A small brick chimney with metal cap and flue pipe rises through the west ridge end of the intersecting roof. The east roof elevation contains a centered, hipped roof dormer with wood shingle siding and double fixed light window. The boxed eaves have bead board soffits with decorative brackets on all elevations.

All the windows, except those in the storage addition, are the original one-over-one wood frame double hung sash. The sills are formed of a double course of bricks which form part of continuous belt course around the building. The windows are topped by half round, triple rowlock arches which spring from another corbeled belt course.

The north elevation contains two evenly spaced windows. The entry tower occupies the space at the intersection of the wings. The recessed entry is accessed through an arch in the tower. The entry is on a four step stoop with metal pipe railings. The door is a paneled wood half-light with transom.

United States Department of the Interior
National Park Service

National Register of Historic Places
Continuation Sheet

Dumont School
Clear Creek County, CO

Section number 7 Page 2

The east elevation contains two pairs of unevenly spaced windows flanking a wood half-light door. The entry is reached from a five step concrete stoop with metal pipe railings. The south elevation is identical to the north. The southwest wing intersection contains the hipped roof storage room. Four concrete steps lead up to the rear school entrance. Two plain plywood doors provide access to the storage area and are reached from the walk leading to the rear school entrance. A single four-light window provides illumination for the storage area. The west elevation contains a centered tri-partite window. The middle window is an arched one-over-one with a triple rowlock half-round hood. The flanking sash windows consist of a multi-light upper with eight right-triangular panes and a single light lower. Two four-light windows provide illumination for the storage area.

The interior consists of a single large classroom with a 6 inch raised stage across the south wall. Original blackboards and wainscot trim line the walls of the room. The original narrow board flooring (probably maple) remains intact. A small set of modern storage cupboards occupies the southwest corner. A hallway runs the length of the building between the north and south entries. There is some indication that this space may have included a small office or teacher's area. The classroom is accessed by two doorways from the main hall and the outside entrance on the east facade.

Privy

The 5'x 10' privy is constructed of light tan brick with hipped roof. Two fixed single light windows provide interior illumination on the north and south elevations. A solid wood privacy wall with shed roofed extension off the west elevation shelters the entrance. The original wood doors remain on the building marked "Boys" and "Girls." Both sections of the divided interior contain two seats. It is believed that the privy was constructed at the same time as the school due to its similar materials and design elements. The privy may have been moved north a few yards during the construction of either the I-70 frontage road or the predecessor state highway.

The school building and associated privy retain sufficient integrity, both interior and exterior, to convey their architectural and historical significance.

Coburn Cabin

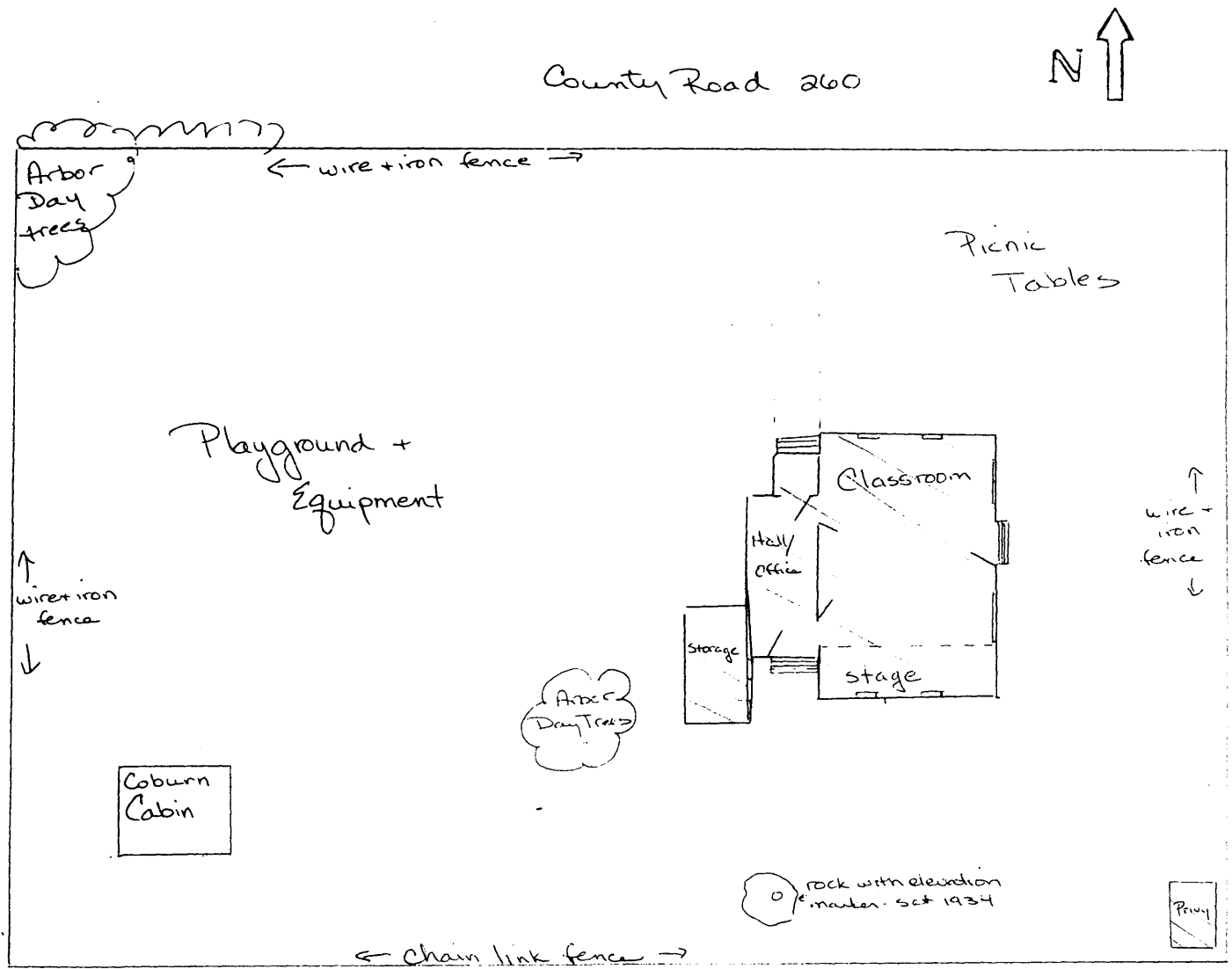
This gabled roof log cabin occupies the southwest corner of the school grounds. The cabin was moved to the site to avoid destruction during the construction of the Interstate highway. The building is considered to be noncontributing as it has no historical association with the current site or the school building.

United States Department of the Interior
National Park Service

National Register of Historic Places
Continuation Sheet

Section number 7 Page 3

Dumont School
Clear Creek County, CO



United States Department of the Interior
National Park Service

National Register of Historic Places
Continuation Sheet

Section number 8 Page 4

Dumont School
Clear Creek County, CO

STATEMENT OF SIGNIFICANCE

Dumont School is eligible for the National Register under Criterion A for its association with the educational history of the Dumont community. The building served as the area's only school from its construction in 1909 until its closure brought about by school consolidation in 1959. The building is important in the area of community planning and development as it demonstrates the community's continued commitment to provide public facilities in the post-mining period of the early 20th century. The building is also eligible under Criterion C as a good local example of the Italianate style. The building exhibits a simple version of the style and is distinguished by its two story entry bell tower.

Area History

Earliest written records of the Dumont area date to 1859 and 1860 with the Downieville and Morris mining districts documenting efforts to find gold along Clear Creek and such tributaries as Mill Creek (known as Walden's Fork at the time). Throughout the 19th century the area went through a series of small boom and bust cycles. The location was well suited to the construction of mills. The confluence of Clear and Mill creeks combined with a dry flat plain in the main valley floor provided a suitable site for early milling interests. The camp soon became known as Mill City. These early ventures soon fell on hard times. During the winter of 1861-62 only two residents remained in the area. In July, 1867, a reporter for the Weekly Miners' Register (Central City) wrote, "The old Bartola stamper stands idle, houseless and forlorn, a rusty monument of past enterprise sunk and lost in the surrounding hills." In May, 1870, the Colorado Miner (Georgetown) noted, "Mill City is a village of possibly seventy-five inhabitants."

The small camp struggled until the arrival of the Colorado Central Railroad in 1877. The railroad connected Denver with Mill City, Georgetown, and eventually, Silver Plume. Suddenly supplies became readily available and the cost of shipping partially processed ores became reasonable enough to again support mining and milling local industries. In 1878, changes in the national economy and passage of the Bland Allison silver purchase act spawned several new communities within one or two miles of Mill City. Towns such as Lawson, Silver Creek and Red Elephant began to thrive as silver mining centers. By 1880 Mill City was revitalized and changed its name to Dumont in honor of John M. Dumont, a prominent investor in mining ventures throughout Clear Creek County. Agriculture as well as mining prospered. In July of 1880 the Colorado Miner reported the town's name change and continued, "There are a number of mountain ranches in close proximity to it which are looking exceedingly well, especially Mr. Coburn's. Messers. Conrad Frick, of Denver, and F.L. Downend have some thirty acres of fine potatoes on their ranch. They intend to put about seven acres of turnips this season." The article reported the pending construction of a hotel and store.

**United States Department of the Interior
National Park Service**

**National Register of Historic Places
Continuation Sheet**

Section number 8 Page 5

Dumont School
Clear Creek County, CO

While the mines around Dumont contained gold ore, many of the communities within Clear Creek County depended on silver processing for their economic prosperity. To a large extent, the economy of Dumont hinged upon the successes and failures of the larger mining area. One of Dumont's greatest periods of stability came to an end when the silver industry suffered its most severe setback. The congressional repeal of the Sherman Silver Purchase Act in November, 1893, caused the silver industry to founder and plunged Colorado into depression. The substantial amounts of east coast and overseas capital which previously poured into the silver mines dried up. When combined with tremendous drops in the value of silver ore, these economic changes sounded the death knell for Colorado silver mining. As interest in silver mining waned, local, regional and national attention refocused on gold mining.

Dumont School History

In 1909 the residents of Dumont raised over \$4,000 to pay local contractor George Keyes to build a new school to replace the older wood building. The new brick school building, the town's only brick building and its most elegant structure by far, rose as a testament to the optimism of local residents and their continued belief in the importance of high quality education. In 1911, School District No. 4 paid Keyes an additional \$900, possibly indicating that the storage area at the southwest (rear) corner of the building was added at that time.

The school provided education for grades 1-8 and served children from Dumont and the surrounding area. A single teacher was employed each year. Besides the day-to-day classes, the school hosted community entertainment and social programs, dinners, and public meetings. It served as the focal point for many of the community's shared activities.

The school was used by local children until the county-wide consolidation of school districts in 1959. The Mill Creek Valley Historical Society purchased the building in 1987 for use as a community center and public meeting hall. The society has maintained the structure as well as taking care of the historic playground equipment. Some new equipment was added along with picnic tables for the enjoyment of the local and travelling public.

The Dumont School is one of the few surviving early 20th century buildings in the Dumont area and is the only public building. The construction of the school demonstrates that many families stayed on in Dumont despite the fragile nature of the local economy. The presence of this well-built, stylish schoolhouse, a solid brick building in the midst of small woodframe houses, indicates the residents were not ready to move with the first sign of a depressed economy.

**United States Department of the Interior
National Park Service**

**National Register of Historic Places
Continuation Sheet**

Section number 8 Page 6

Dumont School
Clear Creek County, CO

Architectural Significance

The Dumont School is a good, in fact the only, example of the Italianate style in the Dumont area. The simple interpretation of the style is typical of that found in Colorado. The 1909 construction date is late for the style, but late examples are not uncommon in small, isolated communities not as quick to adapt new styles or to surrender old ones. Buildings designed by non-architects often employ simple versions of existing styles copied from standing buildings.

The defining characteristics of the style exhibited in the school include:

- ▶ Low pitched hip roof;
- ▶ Wide overhanging eaves with bracketed eaves;
- ▶ Tall, narrow arched windows with brick crowns; and
- ▶ Square tower at intersection of wing and principle section.

Though more elaborate examples of the Italianate style exist in the state, the Dumont School typifies the simple expression of the style.

United States Department of the Interior
National Park Service

National Register of Historic Places
Continuation Sheet

Section number 9 Page 7

Dumont School
Clear Creek County, CO

BIBLIOGRAPHY

Frost, Aaron, et al. *History of Clear Creek and Boulder Valleys, 1880*. Evansville, Indiana: Unigraphics, Inc., 1971.

Historical Society of Idaho Springs. *History of Clear Creek County: Tailings, Tracks and Tommyknockers*. Denver: Specialty Publishing, Inc., 1986.

McAlester. Virginia and Lee. *A Field Guide to American Houses*. New York: Alfred Knopf, 1990.

Pearce, Sarah J. *A Guide to Colorado Architecture*. Denver: Colorado Historical Society, 1983.

Records of School District No. 4, Clear Creek County, Clear Creek County Archives, Georgetown, Colo.

Newspaper references:

Weekly Miners' Register (Central City). July 2, 1867, page 3, columns 3-4.

Colorado Miner (Georgetown). May 19, 1870, page 4, column 2.

Colorado Miner (Georgetown). July 3, 1880, page 3, column 6.

**United States Department of the Interior
National Park Service**

**National Register of Historic Places
Continuation Sheet**

Section number 10 Page 8

Dumont School
Clear Creek County, CO

GEOGRAPHICAL DATA

Verbal Boundary Description

A tract of ground beginning at a point whence corner number 18, Dumont townsite bears North 13 degrees 26 minutes West 73.29 feet; thence 9 degrees 52 minutes 30 seconds West 175 feet; thence North 80 degrees 7 minutes 30 seconds 175 feet North; thence 9 degrees 52 minutes 30 seconds East 175 feet; thence South 80 degrees 7 minutes 30 seconds East 175 feet to the place of beginning. Townsite of Dumont, County of Clear Creek, State of Colorado.

The nomination does not include the portion of the above property now within the right-of-way for the I-70 frontage road described as follows:

All that certain tract of land situate in the Townsite of Dumont, County of Clear Creek and State of Colorado, described as follows, to-wit:

Beginning at a point which is the SW Corner of School lot in Dumont Townsite, as described in and conveyed by Deed dated May 31, 1913, and recorded May 31, 1913, in Book 188 at Page 24, of the records of the office of the County Clerk and Recorder, Clear Creek County, Colorado; thence North 9 degrees 52 minutes 30 seconds East 44.6 feet; thence on a curve to the right with a radius of 2905 feet (approximately South 84 degrees 7 minutes East) 177 feet; thence South 9 degrees 52 minutes 30 seconds West 175 feet to point of beginning, containing approximately 0.22 acres, more or less.

Boundary Justification

The nominated property includes the entire parcel historically associated with the Dumont School except for the part lacking integrity as part of the I-70 frontage road right-of-way.

United States Department of the Interior
National Park Service

National Register of Historic Places
Continuation Sheet

Section number Additional Documentation Page 9

Dumont School
Clear Creek County, CO

PHOTOGRAPH LOG

The following information pertains to photographs numbers 1 - 23:

Name of Property: Dumont School
Location: Clear Creek County, Colo.
Photographer: Christine Bradley
Date of Photographs: December 4, 1994
Negatives: Colorado Historical Society, 1300 Broadway
Denver, CO 80203

<u>Photo No.</u>	<u>Information</u>
1	View from northeast corner of property looking southwest.
2	View from north looking south.
3	View from south looking northwest with privy in foreground.
4	View from south looking north.
5	View from south looking north.
6	View from north looking south.
7	View of west elevation looking south.
8	View of tower looking east.
9	View of upper tower detail.
10	View from northwest looking southeast.
11	View of Arbor Day trees in northwest corner of property.
12	View of old fence along north property line. View from west looking east.

**United States Department of the Interior
National Park Service**

**National Register of Historic Places
Continuation Sheet**

Dumont School
Clear Creek County, CO

Section number Additional Documentation Page 10

<u>Photo No.</u>	<u>Information</u>
13	Coburn Cabin in southwest corner of property.
14	Old playground equipment on west side of school building.
15	West elevation of school, looking east.
16	South elevation of school, looking north.
17	[not submitted]
18	Dormer on east elevation.
19	Privy in southeast corner of property, looking southeast.
20	South elevation of school, view to the northeast.
21	Storage room off southwest corner, view to northwest.
22	View from southwest looking northeast.
23	View of front (north) entry, looking south.

United States Department of the Interior
National Park Service

National Register of Historic Places
Continuation Sheet

Section number Additional Documentation Page 11

Dumont School
Clear Creek County, CO

USGS TOPOGRAPHIC MAP
Central City, Colo.
7.5 Minute Quad
1972

