



West side of Sacramento Av.:Dunsmuir Historic  
Commercial District.

5901 - 5819 Sacramento Av., Dunsmuir, Siskiyou  
County, California.

Photographer: Gail E.H. Evans.

Date of Photo: November 1981.

Negative: Dunsmuir Historic Mgmt. Com.  
Dunsmuir, Ca. 96025

Looking south on Sacramento Avenue.

1 of 19



CALIFORNIA

THEATRE

CHAMPION

RECAP FROM NEW YORK

CORNET

H  
O  
N  
S  
S

Water Shop  
Break Room

Dunsmuir Avenue, Dunsmuir Historic Commercial  
District.

5815 -5727 Dunsmuir Av., Dunsmuir, Siskiyou  
County, California.

Photographer: Gail E.H. Evans.

Date of Photo: November 1981.

Negative: Dunsmuir Historic Mgmt. Com.  
Dunsmuir, Ca. 96025.

Looking south on Dunsmuir Avenue.

2 of 19.



Pine Street, Dunsmuir Historic Commercial  
District.

Pine Street, Dunsmuir, Siskiyou County,  
California.

Photographer: Gail E.H. Evans.

Date of Photo: November 1981.

Negative: Dunsmuir Historic Mgmt. Com.  
Dunsmuir, Ca. 96025

Looking west on Pine Street toward the inter  
section of Dunsmuir Avenue.

3 of 19.



BANK OF AMERICA

SAVED FOR ME

STOP

Hutaff Building (right), State Bank of Dunsmuir(center), Dunsmuir Hist. Com. District 5801 (right) and 5800 (center) Dunsmuir Av., Dunsmuir, Siskiyou County, California.

Photographer: Gail E.H. Evans.

Date of Photo: November 1981.

Negative: Dunsmuir Historic Mgmt. Com.  
Dunsmuir, Ca. 96025.

Looking east on Pine Street toward the intersection of Dunsmuir Avenue.

4 of 19.





RECEIVED

TAVELERS  
REST. BART

BIG  
SODA LOTS  
LIQUOR

BANK  
OF  
AMERICA

Hutaff Building/Travelers Hotel, Dunsmuir  
Historic Commercial District. (Map No. 9)  
5801 - 5815 Dunsmuir Avenue, Dunsmuir,  
Siskiyou County, California.

Photographer: Gail E.H. Evans.

Date of Photo: September 1981.

Negative: Dunsmuir Historic Mgmt. Com.  
Dunsmuir, Ca. 96025.

Southwest view, at the intersection of Pine  
Street and Dunsmuir Avenue.

5 of 19.



Warner Building, Dunsmuir Historic Commercial District. (Map No. 10)  
4300 Pine Street, Dunsmuir, Siskiyou County,  
California.

Photographer: Gail E.H. Evans.

Date of Photo: November 1981.

Negative: Dunsmuir Historic Mgmt. Com.  
Dunsmuir, Ca. 96025.

Southwest view.

6 of 19.



**CALIFORNIA THEATRE**

MASONIC TEMPLE

Masonic Temple, Dunsmuir Historic Commercial  
District. (Map No. 12)

5739, 5741 Dunsmuir Avenue, Dunsmuir, Siski-  
you County, California.

Photographer: Gail E.H. Evans.

Date of Photo: September 1981.

Negative: Dunsmuir Historic Mgmt. Com.  
Dunsmuir, Ca. 96025.

East elevation.

7 of 19



Williams/~~Clark~~ House, Dunsmuir Historic Com  
mercial District. (Map No. 16)

5715 Dunsmuir Avenue, Dunsmuir, Siskiyou  
County, California.

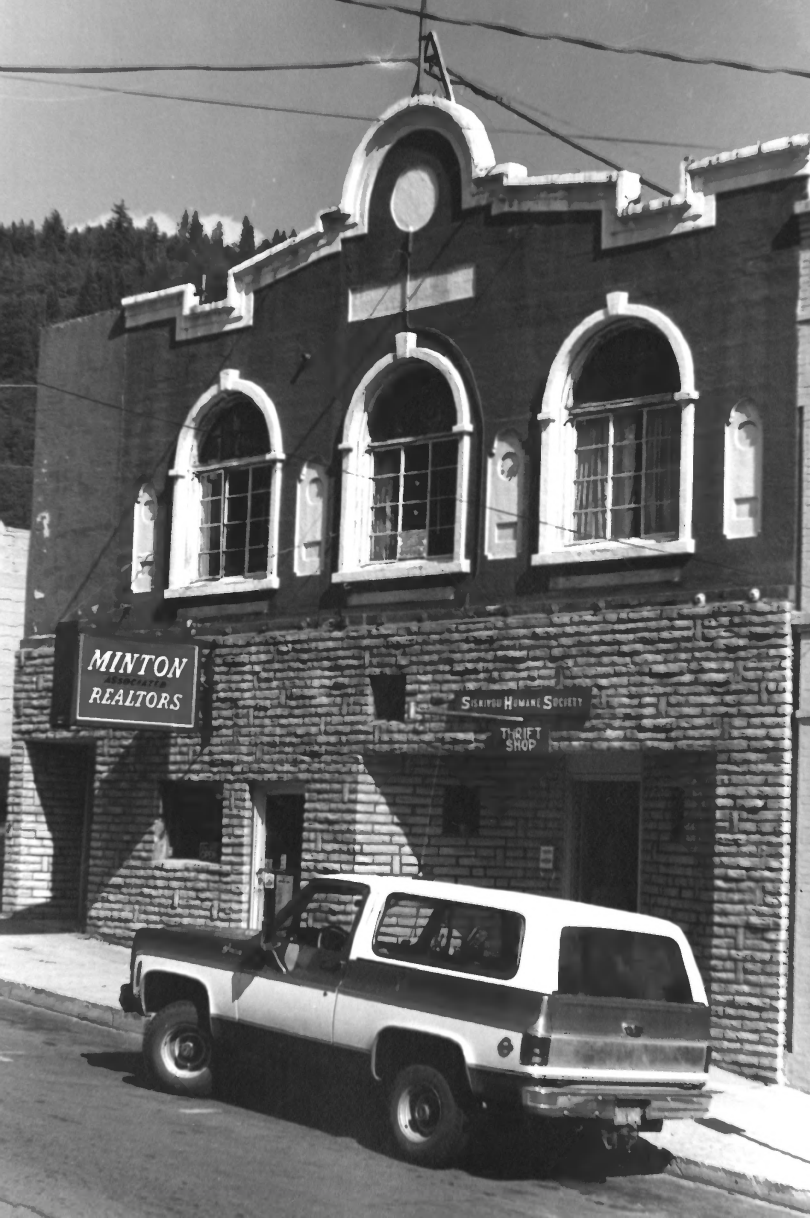
Photographer: Linda Pinkham.

Date of Photo: September 1981.

Negative: Dunsmuir Historic Mgmt. Com.  
Dunsmuir, Ca. 96025

Southwest view.





**MINTON**  
ASSOCIATES  
**REALTORS**

**SISKIYOU HUMANE SOCIETY**

**THRIFT  
SHOP**

Tallerico Building, Dunsmuir Historic Commercial District.

5726, 5728 Dunsmuir Avenue, Dunsmuir, Siskiyou County, California.

Photographer: Gail E.H. Evans.

Date of Photo: September 1981.

Negative: Dunsmuir Historic Mgmt. Com.  
Dunsmuir, Ca. 96025

West elevation.

9 of 19.



Hotel Weed, Dunsmuir Historic Commercial  
District. (Map No. 19)

5744 Dunsmuir Avenue, Dunsmuir, Siskiyou  
County, California.

Photographer: Gail E.H. Evans.

Date of Photo: November 1981.

Negative: Dunsmuir Historic Mgmt. Com.  
Dunsmuir, Ca. 96025.

Northwest view.

10 of 19.

•BANK OF AMERICA•

BANK  
OF  
AMERIC



State Bank of Dunsmuir, Dunsmuir Historic  
Commercial District. (Map No. 20)  
5800 Dunsmuir Avenue, Dunsmuir, Siskiyou  
County, California.

Photographer: Gail E.H. Evans.

Date of Photo: September 1981.

Negative: Dunsmuir Historic Mgmt. Com.  
Dunsmuir, Ca. 96025.

North elevation.

11 Of 19.



Van Fossen House, Dunsmuir Historic Commercial District. (Map No. 25)

5832, 5832A Dunsmuir Avenue, Dunsmuir,  
Siskiyou County, California.

Photographer; Gail E.H. Evans.

Date of Photo: September 1981.

Negative: Dunsmuir Historic Mgmt. Com.  
Dunsmuir Ca. 96025.

West facade.

12 of 19.





*Barnett's*  
FLOOR COVERINGS

Leach/Van Fossen Apt. House, Dunsmuir Historic Commercial District. (Map No. 28)  
5844-5866 Dunsmuir Avenue, Dunsmuir, Siskiyou County, California.

Photographer: Gail E.H. Evans.

Date of Photo: September 1981.

Negative: Dunsmuir Historic Mgmt. Com.  
Dunsmuir, Ca. 96025.

Southwest view.

13 of 19.



Dunsmuir City Hall, Dunsmuir Historic Commercial District. (Map No. 29)

5902 Dunsmuir Avenue, Dunsmuir, Siskiyou County, California.

Photographer: Gail E.H. Evans.

Date of Photo: September 1981.

Negative: Dunsmuir Historic Mgmt. Com.  
Dunsmuir, Ca. 96025.

West elevation.

14 of 19.



Dunsmuir City Hall, Dunsmuir Historic Commercial District. (Map No. 29)

5902 Dunsmuir Avenue, Dunsmuir, Siskiyou County, California.

Photographer: Gail E.H. Evans.

Date of Photo: November 1981.

Negative: Dunsmuir Historic Mgmt. Com.  
Dunsmuir, Ca. 96025.

North elevation.

15 of 19.



FREE PARKING  
S. and J. Shoppers Only  
ONE HOUR LIMIT

Wells Building, Dunsmuir Historic Commercial  
District. (Map No. 35)

5859 Sacramento Avenue, Dunsmuir, Siskiyou  
County, California.

Photographer: Gail E.H. Evans.

Date of Photo: September 1981.

Negative: Dunsmuir Historic Mgmt. Com.  
Dunsmuir, Ca. 96025.

Southeast view.

16 Of 19.





Wagoner Building, Dunsmuir Historic Commer-  
cial District. (Map No. 38)

5827-5831 Sacramento Avenue, Dunsmuir,  
Siskiyou County, California.

Photographer: Gail E.H. Evans.

Date of Photo: September 1981.

Negative: Dunsmuir Historic Mgmt. Com.  
Dunsmuir, Ca. 96025.

East elevation.

17 Of 19.



Rostel Building, Dunsmuir Historic Commer-  
cial District.

5743 Sacramento Avenue, Dunsmuir, Siskiyou  
County, California.

Photographer: Gail E.H. Evans.

Date of Photo: September 1981.

Negative: Dunsmuir Historic Mgmt. Com.  
Dunsmuir, Ca. 96025.

Northeast view.

18 Of 19.



West side of Dunsmuir Av.: Dunsmuir Historic  
Commercial District.

West side of Dunsmuir Av.: Dunsmuir Historic  
Commercial District  
5855 - 5817 Dunsmuir Av., Dunsmuir, Siskiyou  
County, California.

Photographer: Gail E.H. Evans.

Date of Photo: November, 1981.

Negative: Dunsmuir Historic Mgmt. Com.  
Dunsmuir, California 96025

Looking south on Dunsmuir Avenue

No. 19 of 19