



front view of Courthouse with War Monument

Posey County Courthouse - 1986

the posey county courthouse
mt. vernon, indiana
curt knight

1986

camera facing east. the front of
the courthouse facing west.

PHOTO 1



Posey County Courthouse 1986

the ground level
mt. vernon
curt k
1986

camera is facing north-east

the southwest corner of the square with the south &
west side of the courthouse PHOTO #2

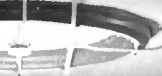
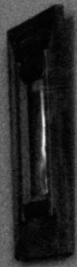


TREASURER

RECORDER

CLERK

AUDITOR



Corridor on 1st floor
Posey County Courthouse - 1986

the posey county courthouse
mt. vernon, ind.
curt knight
1986

north-south corridor running
the long way of the courthouse
camera is facing north
PHOTO #3



One of 2 stairs from 1st floor to 3rd floor

Posey County Courthouse - 1986

the posey county courthouse

mt. vernon ind

curt knight

1986

came to the 3rd floor to see the

third floor showing the

wooden support

PHOTO #4



Courtroom on 2nd floor

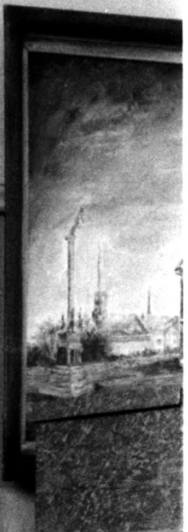
Posey County Courthouse - 1986

the posey county courthouse
mt. vernon, ind.
curt knight
1986

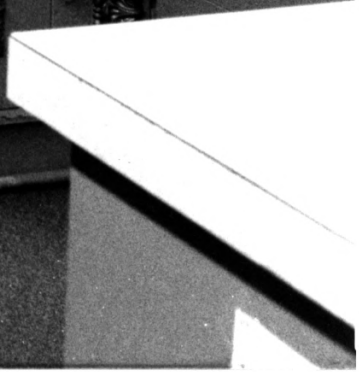
camera is facing south.

courtroom on the second floor of the
courthouse. also the balcony that
comes off the third floor.

PHOTO #5



To err is human.
To really
foul things up
requires a
computer!



Original Safe Doors in Treasurer's office

Posey County Courthouse - 1986

the posey county courthouse
mt. vernon, ind.

curt knight

1986

camera is front of original safe
in treasurer's office.

PHOTO #6