



1000  
Coca-Cola  
The Soft Drink

PLEASE  
STAY IN YOUR LANE!  
THANK YOU!

THE INDUSTRIAL BUILDING  
OVERALL VIEW FROM VICINITY OF I-83

①

Baltimore (ind. city)

MAR 10 1980

FRED B. SHOKEN, CHAP

12/78

JAN 4 1980



THE INDUSTRIAL BUILDING

②

FRONT FACADE

Baltimore (Ind. city)

MAR 10 1980

FRED B. SHOKEN, CHAP

12/78

JAN 4 1980



THE INDUSTRIAL BUILDING

③

W. SIDE FACADE FROM NORTH

Baltimore (Ind. City)

MAR 10 1980

FRED B. SHOKEN, CHAP

12/78

JAN 4 1980



THE INDUSTRIAL BUILDING

④

WEST SIDE LOADING DOCKS

BALTIMORE (IND. CITY)

MAR 10 1980

FRED B. SHOKEN, CHAP

12/78

JAN 4 1980





THE INDUSTRIAL BUILDING

⑤

WEST SIDE WINDOW DETAIL

Baltimore (ind city)

MAR 10 1980

FRED B. SHOKEN, CHAP

12/78

JAN 4 1980

INDUSTRIAL BUILDING

NO SITTING ON STEPS  
OR LOITERING  
PROHIBITED

WEST  
W



THE INDUSTRIAL BUILDING

⑥

ENTRANCE DETAIL

BANIMORE (cont. city)

MAR 10 1980

FRED B SHOKEN, CHAP

12/78

JAN 4 1980

NG ON STEPS  
LOITERING  
HIBITED



THE INDUSTRIAL BUILDING

⑦

FRONT DOORS

BALTIMORE (ad. city)

FRED B. SHOKEN, CHAP

12/78

JAN 4 1980



THE INDUSTRIAL BUILDING (8)

EASTERN SIDE FACADE FROM SOUTH

BALTIMORE (IND. CITY)

MAR 10 1980

FRED B. SHOKEN

JAN 4 1980

12/78





9

INDUSTRIAL BUILDING

EASTERN FACADE - LIGHT COURT

BALTIMORE (IND. CITY)  
FRED B. SHOKEN,

MAR 10 1980

CHAP

12/78

JAN 4 1980



THE INDUSTRIAL BUILDING

⑩

REAR OF BUILDING, OVER PRESTON

ST. LOW HOUSING

BALTIMORE (Md.) City

MAR 10 1980

FRED B. SHOKEN, CHAP

JAN 4 1980

12/78



THE INDUSTRIAL BUILDING

①

INTERIOR SPACE FOR INDUSTRIAL USE

BALTIMORE (IND. CITY)

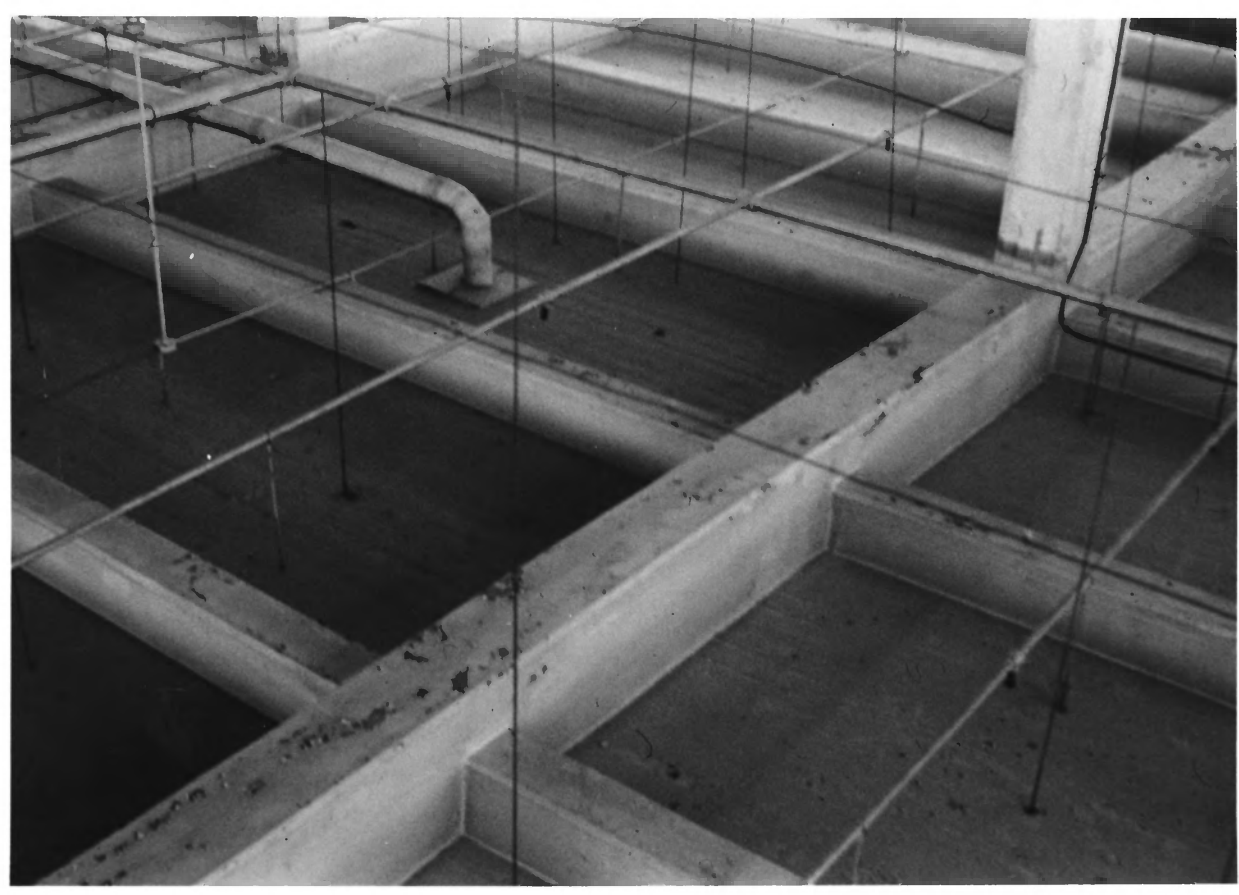
MAR

10 1980

FRED B. SHOKEN, CHAP

12/78

JAN 4 1980



THE INDUSTRIAL BUILDING

⑫

INTERIOR CEILING DETAIL

BALTIMORE Cent. City

MAR 10 1980

FRED B. SHOKEN, CHAP

12/78

JAN 4 1980





THE INDUSTRIAL BUILDING

③

INTERIOR - RADIATOR

BALTIMORE (IND. CITY)

MAR

10

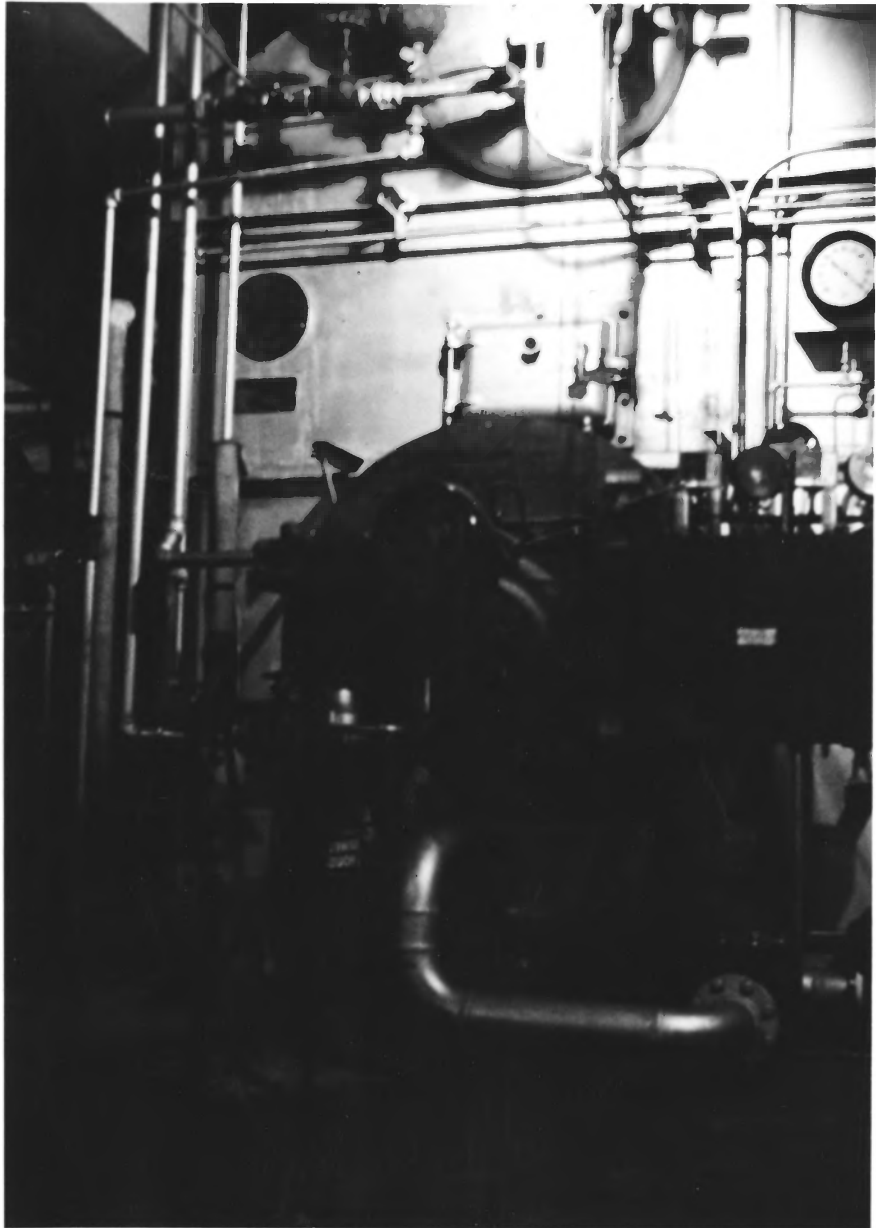
1980

FRED B. SHOKEN, CHAP

12/78

JAN

4 1980



THE INDUSTRIAL BUILDING

⑭

BOILER ROOM

BALTIMORE Ind. City

FRIED B. SHOKEN, CHAP

MAR 10 1980

12/78

JAN 4 1980



THE INDUSTRIAL BUILDINGS

(15)

ELEVATOR

SHAFT

BAH. MORE (Ind. City)

MAR 10 1980

FRED B. SHOKEN, CHAP.

12/78

JAN 4 1980