



1. SHEPHERDSTOWN HISTORIC SURVEY
2. Shepherdstown, WV
3. Photo Date: March 1986
4. Photo by Paula S. Reed
5. Neg. Location: Hagerstown, MD
Preservation Associates, Inc.
6. View W. German St. NW
7. Photo # /



- 2
1. SHEPHERDSTOWN HISTORIC SURVEY
 2. Shepherdstown, WV
 3. Photo Date: March 1986
 4. Photo by Paula S. Reed
 5. Neg. Location: Hagerstown, MD
Preservation Associates, Inc.
 6. View N. Side, W. German St. NE
 7. Photo # 2



WEST

45



NORTH

480



SOUTH

230



1234

1. SHEPHERDSTOWN HISTORIC SURVEY
2. Shepherdstown, WV
3. Photo Date: March 1986
4. Photo by Paula S. Reed
5. Neg. Location: Hagerstown, MD
Preservation Associates, Inc.
6. View NE Corner German & Duke Sts. NE
7. Photo # 3



THIS PAPER MANUFACTURED BY KODAK

JEFFERSON



1. SHEPHERDSTOWN HISTORIC SURVEY
2. Shepherdstown, WV
3. Photo Date: March 1986
4. Photo by Paula S. Reed
5. Neg. Location: Hagerstown, MD
Preservation Associates, Inc.
6. View German & Church Sts., NE
7. Photo #5



- 6
1. SHEPHERDSTOWN HISTORIC SURVEY
 2. Shepherdstown, WV
 3. Photo Date: March 1986
 4. Photo by Paula S. Reed
 5. Neg. Location: Hagerstown, MD
Preservation Associates, Inc.
 6. View N. German St., NE view
 7. Photo # 6



1. SHEPHERDSTOWN HISTORIC SURVEY
2. Shepherdstown, WV
3. Photo Date: March 1986
4. Photo by Paula S. Reed
5. Neg. Location: Hagerstown, MD
Preservation Associates, Inc.
6. View S. German St. McMurrin Hall
N.W.
7. Photo # 7



- 6
1. SHEPHERDSTOWN HISTORIC SURVEY
 2. Shepherdstown, WV
 3. Photo Date: March 1986
 4. Photo by Paula S. Reed
 5. Neg. Location: Hagerstown, MD
Preservation Associates, Inc.
 6. View S. German St. , NE view
 7. Photo #8



- 9
1. SHEPHERDSTOWN HISTORIC SURVEY
 2. Shepherdstown, WV
 3. Photo Date: March 1986
 4. Photo by Paula S. Reed
 5. Neg. Location: Hagerstown, MD
Preservation Associates, Inc.
 6. View S. German & Princess Sts. NE
 7. Photo #9



1. SHEPHERDSTOWN HISTORIC SURVEY
2. Shepherdstown, WV
3. Photo Date: March 1986
4. Photo by Paula S. Reed
5. Neg. Location: Hagerstown, MD
Preservation Associates, Inc.
6. View S. German St., N
7. Photo # 10



- 11
1. SHEPHERDSTOWN HISTORIC SURVEY
 2. Shepherdstown, WV
 3. Photo Date: March 1986
 4. Photo by Paula S. Reed.
 5. Neg. Location: Hagerstown, MD
Preservation Associates, Inc.
 6. View S. Geman St, NE view
 7. Photo # 11



1. SHEPHERDSTOWN HISTORIC SURVEY
2. Shepherdstown, WV
3. Photo Date: March 1986
4. Photo by Paula S. Reed
5. Neg. Location: Hagerstown, MD
Preservation Associates, Inc.
6. View S. German St., from Mill St.
NW view
7. Photo #12



1. SHEPHERDSTOWN HISTORIC SURVEY
2. Shepherdstown, WV
3. Photo Date: March 1986
4. Photo by Paula S. Reed
5. Neg. Location: Hagerstown, MD
Preservation Associates, Inc.
6. View S. German & Mill Sts., NE
7. Photo # 13



1. SHEPHERDSTOWN HISTORIC SURVEY
2. Shepherdstown, WV
3. Photo Date: March 1986
4. Photo by Paula S. Reed
5. Neg. Location: Hagerstown, MD
Preservation Associates, Inc.
6. View N&W Railroad Sta. N.
7. Photo # 14



1. SHEPHERDSTOWN HISTORIC SURVEY
2. Shepherdstown, WV
3. Photo Date: March 1986
4. Photo by Paula S. Reed
5. Neg. Location: Hagerstown, MD
Preservation Associates, Inc.
6. View S. German St. NW view
7. Photo #15



1. SHEPHERDSTOWN HISTORIC SURVEY
2. Shepherdstown, WV
3. Photo Date: March 1986
4. Photo by Paula S. Reed
5. Neg. Location: Hagerstown, MD
Preservation Associates, Inc.
6. View Lutheran Cemetery & College St.
NE
7. Photo #16



1. SHEPHERDSTOWN HISTORIC SURVEY
2. Shepherdstown, WV
3. Photo Date: March 1986
4. Photo by Paula S. Reed
5. Neg. Location: Hagerstown, MD
Preservation Associates, Inc.
6. View N. Princess St. SE
7. Photo # 17



1. SHEPHERDSTOWN HISTORIC SURVEY
2. Shepherdstown, WV
3. Photo Date: March 1986
4. Photo by Paula S. Reed
5. Neg. Location: Hagerstown, MD
Preservation Associates, Inc.
6. View N. Princess, NE
7. Photo # 18



1. SHEPHERDSTOWN HISTORIC SURVEY
2. Shepherdstown, WV
3. Photo Date: March 1986
4. Photo by Paula S. Reed
5. Neg. Location: Hagerstown, MD
Preservation Associates, Inc.
6. View N. King St., W. view
7. Photo # 19



1. SHEPHERDSTOWN HISTORIC SURVEY
2. Shepherdstown, WV
3. Photo Date: March 1986
4. Photo by Paula S. Reed
5. Neg. Location: Hagerstown, MD
Preservation Associates, Inc.
6. View Sites 17, 18, 19 SW
7. Photo # 20



1. SHEPHERDSTOWN HISTORIC SURVEY
2. Shepherdstown, WV
3. Photo Date: March 1986
4. Photo by Paula S. Reed
5. Neg. Location: Hagerstown, MD
Preservation Associates, Inc.
6. View Sites 61, 71 NW
7. Photo # 21



1. SHEPHERDSTOWN HISTORIC SURVEY
2. Shepherdstown, WV
3. Photo Date: March 1986
4. Photo by Paula S. Reed
5. Neg. Location: Hagerstown, MD
Preservation Associates, Inc.
6. View N. Duke St., NW, toward
High Street
7. Photo # 22



1. SHEPHERDSTOWN HISTORIC SURVEY
2. Shepherdstown, WV
3. Photo Date: March 1986
4. Photo by Paula S. Reed
5. Neg. Location: Hagerstown, MD
Preservation Associates, Inc.
6. View Site 67, NE
7. Photo # 23.



1. SHEPHERDSTOWN HISTORIC SURVEY
2. Shepherdstown, WV
3. Photo Date: March 1986
4. Photo by Paula S. Reed
5. Neg. Location: Hagerstown, MD
Preservation Associates, Inc.
6. View S. Side, W. High Street east
of Duke
7. Photo # 24



1. SHEPHERDSTOWN HISTORIC SURVEY
2. Shepherdstown, WV
3. Photo Date: March 1986
4. Photo by Paula S. Reed
5. Neg. Location: Hagerstown, MD
Preservation Associates, Inc.
6. View S. Side N. High St., toward
Church St. SE
7. Photo # 25



1. SHEPHERDSTOWN HISTORIC SURVEY
2. Shepherdstown, WV
3. Photo Date: March 1986
4. Photo by Paula S. Reed
5. Neg. Location: Hagerstown, MD
Preservation Associates, Inc.
6. View S. Side N. High St. from Church
St. SE
7. Photo # 26



1. SHEPHERDSTOWN HISTORIC SURVEY
2. Shepherdstown, WV
3. Photo Date: March 1986
4. Photo by Paula S. Reed
5. Neg. Location: Hagerstown, MD
Preservation Associates, Inc.
6. View S. Side W. High St. from King
St. SW
7. Photo # 27



1. SHEPHERDSTOWN HISTORIC SURVEY
2. Shepherdstown, WV
3. Photo Date: March 1986
4. Photo by Paula S. Reed
5. Neg. Location: Hagerstown, MD
Preservation Associates, Inc.
6. View N. King, SE from High St.
7. Photo # 28



1. SHEPHERDSTOWN HISTORIC SURVEY
2. Shepherdstown, WV
3. Photo Date: March 1986
4. Photo by Paula S. Reed
5. Neg. Location: Hagerstown, MD
Preservation Associates, Inc.
6. View S. Side, E. High St. toward
Princess St. SW
7. Photo # 29



1. SHEPHERDSTOWN HISTORIC SURVEY
2. Shepherdstown, WV
3. Photo Date: March 1986
4. Photo by Paula S. Reed
5. Neg. Location: Hagerstown, MD
Preservation Associates, Inc.
6. View S. Side E. High St. toward
Mill St. SE
7. Photo # 30



1. SHEPHERDSTOWN HISTORIC SURVEY
2. Shepherdstown, WV
3. Photo Date: March 1986
4. Photo by Paula S. Reed
5. Neg. Location: Hagerstown, MD
Preservation Associates, Inc.
6. View N. Side E. High St. East of
Princess, NE
7. Photo # 31



1. SHEPHERDSTOWN HISTORIC SURVEY
2. Shepherdstown, WV
3. Photo Date: March 1986
4. Photo by Paula S. Reed
5. Neg. Location: Hagerstown, MD
Preservation Associates, Inc.
6. View N. Side E. High St. , W of
Mill Street NE
7. Photo # 32



1. SHEPHERDSTOWN HISTORIC SURVEY
2. Shepherdstown, WV
3. Photo Date: March 1986
4. Photo by Paula S. Reed
5. Neg. Location: Hagerstown, MD
Preservation Associates, Inc.
6. View SE corner High & Mill Sfs.
7. Photo # 33



1. SHEPHERDSTOWN HISTORIC SURVEY
2. Shepherdstown, WV
3. Photo Date: March 1986
4. Photo by Paula S. Reed
5. Neg. Location: Hagerstown, MD
Preservation Associates, Inc.
6. View N. Side E. High St. from
Mill St., NE
7. Photo # 34



1. SHEPHERDSTOWN HISTORIC SURVEY
2. Shepherdstown, WV
3. Photo Date: March 1986
4. Photo by Paula S. Reed
5. Neg. Location: Hagerstown, MD
Preservation Associates, Inc.
6. View E. Side, N. Princess St. from
High St. NE
7. Photo # 35



1. SHEPHERDSTOWN HISTORIC SURVEY
2. Shepherdstown, WV
3. Photo Date: March 1986
4. Photo by Paula S. Reed
5. Neg. Location: Hagerstown, MD
Preservation Associates, Inc.
6. View Mecklenburg Tobacco Warehouse
NE
7. Photo # 36



1. SHEPHERDSTOWN HISTORIC SURVEY
2. Shepherdstown, WV
3. March 1986
4. Photo by Paula S. Reed
5. Neg. Location: Hagerstown, MD
Preservation Associates, Inc.
6. View: Bridge Toll House, N. Princess
NW
7. Photo # 37



1. SHEPHERDSTOWN HISTORIC SURVEY
2. Shepherdstown, WV
3. March 1986
4. Photo by Paula S. Reed
5. Neg. Location: Hagerstown, MD
Preservation Associates, Inc.
6. View: Site # 89, W. View
7. Photo # 38



1. SHEPHERDSTOWN HISTORIC SURVEY
2. Shepherdstown, WV
3. March 1986
4. Photo by Paula S. Reed
5. Neg. Location: Hagerstown, MD
Preservation Associates, Inc.
6. View: E. Side N. Mill, N. of
High St. SE
7. Photo # 39



1. SHEPHERDSTOWN HISTORIC SURVEY
2. Shepherdstown, WV
3. March 1986
4. Photo by Paula S. Reed
5. Neg. Location: Hagerstown, MD
Preservation Associates, Inc.
6. View: Site 84, SW
7. Photo #40



1. SHEPHERDSTOWN HISTORIC SURVEY
2. Shepherdstown, WV
3. March 1986
4. Photo by Paula S. Reed
5. Neg. Location: Hagerstown, MD
Preservation Associates, Inc.
6. View: N Side, E High St. at College St.
NE
7. Photo #41



1. SHEPHERDSTOWN HISTORIC SURVEY
2. Shepherdstown, WV
3. March 1986
4. Photo by Paula S. Reed
5. Neg. Location: Hagerstown, MD
Preservation Associates, Inc.
6. View: E Side College St. from
High St. SE
7. Photo #42



1. SHEPHERDSTOWN HISTORIC SURVEY
2. Shepherdstown, WV
3. March 1986
4. Photo by Paula S. Reed
5. Neg. Location: Hagerstown, MD
Preservation Associates, Inc.
6. View: Rumsey Monument E View
7. Photo #43



1. SHEPHERDSTOWN HISTORIC SURVEY
2. Shepherdstown, WV
3. March 1986
4. Photo by Paula S. Reed
5. Neg. Location: Hagerstown, MD
Preservation Associates, Inc.
6. View: E Side Mill St. toward
High St. NE
7. Photo #44



1. SHEPHERDSTOWN HISTORIC SURVEY
2. Shepherdstown, WV
3. March 1986
4. Photo by Paula S. Reed
5. Neg. Location: Hagerstown, MD
Preservation Associates, Inc.
6. View: N. Side High St. From Church
St. NE
7. Photo #45



1. SHEPHERDSTOWN HISTORIC SURVEY
2. Shepherdstown, WV
3. March 1986
4. Photo by Paula S. Reed
5. Neg. Location: Hagerstown, MD
Preservation Associates, Inc.
6. View: N. Side High Street from
Church St. NW
7. Photo #46



1. SHEPHERDSTOWN HISTORIC SURVEY
2. Shepherdstown, WV
3. March 1986
4. Photo by Paula S. Reed
5. Neg. Location: Hagerstown, MD
Preservation Associates, Inc.
6. View: S. Side E. German, from
Mill St. SW
7. Photo #47



1. SHEPHERDSTOWN HISTORIC SURVEY
2. Shepherdstown, WV
3. March 1986
4. Photo by Paula S. Reed
5. Neg. Location: Hagerstown, MD
Preservation Associates, Inc.
6. View: Site 126, SE
7. Photo #48



49

1. SHEPHERDSTOWN HISTORIC SURVEY
2. Shepherdstown, WV
3. March 1986
4. Photo by Paula S. Reed
5. Neg. Location: Hagerstown, MD
Preservation Associates, Inc.
6. View: Site 127, S
7. Photo # 49



1. SHEPHERDSTOWN HISTORIC SURVEY
2. Shepherdstown, WV
3. March 1986
4. Photo by Paula S. Reed
5. Neg. Location: Hagerstown, MD
Preservation Associates, Inc.
6. View: S. Side E. German toward
Princess St. SW
7. Photo #50



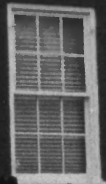
DEAD
END ROAD
FOR TRUCKS

NO
U
TURN

NO
LEFT
TURN

CHEVROLET

1. SHEPHERDSTOWN HISTORIC SURVEY
2. Shepherdstown, WV
3. March 1986
4. Photo by Paula S. Reed
5. Neg. Location: Hagerstown, MD
Preservation Associates, Inc.
6. View: E. Side S. Princess from
German St. SE
7. Photo #51



Shepherdstown
PHARMACY

COSMETICS

RUGS

THINK



1. SHEPHERDSTOWN HISTORIC SURVEY
2. Shepherdstown, WV
3. March 1986
4. Photo by Paula S. Reed
5. Neg. Location: Hagerstown, MD
Preservation Associates, Inc.
6. View: S. Side E. German St. from
Princess SW
7. Photo # 52



1. SHEPHERDSTOWN HISTORIC SURVEY
2. Shepherdstown, WV
3. March 1986
4. Photo by Paula S. Reed
5. Neg. Location: Hagerstown, MD
Preservation Associates, Inc.
6. View: W. Side S. Princess St. from
Back Alley, NW
7. Photo # 53



Shepherdstown
PHARMACY

COSMETICS

DRUGS

THINK

Pickar
Real Estate
REAL ESTATE
878-6981

85-9272

54

1. SHEPHERDSTOWN HISTORIC SURVEY
2. Shepherdstown, WV
3. March 1986
4. Photo by Paula S. Reed
5. Neg. Location: Hagerstown, MD
Preservation Associates, Inc.
6. View: S. Side E. German St. from
Princess St., SW
7. Photo # 54



1. SHEPHERDSTOWN HISTORIC SURVEY
2. Shepherdstown, WV
3. March 1986
4. Photo by Paula S. Reed
5. Neg. Location: Hagerstown, MD
Preservation Associates, Inc.
6. View: S. Side, E. German St. From
King St. SE
7. Photo #55



1. SHEPHERDSTOWN HISTORIC SURVEY
2. Shepherdstown, WV
3. March 1986
4. Photo by Paula S. Reed
5. Neg. Location: Hagerstown, MD
Preservation Associates, Inc.
6. View: Market House, Site 148
S view
7. Photo #56



1. SHEPHERDSTOWN HISTORIC SURVEY
2. Shepherdstown, WV
3. March 1986
4. Photo by Paula S. Reed
5. Neg. Location: Hagerstown, MD
Preservation Associates, Inc.
6. View: S. Side W. German St. from
King St. SW
7. Photo # 57



H.C. MARTEN

AL'S
PIZZA
HOT & COLD
SUBS

AL'S
HOT & COLD
SUBS

AL'S
PIZZA
NEW YORK Style

CALZONES

1. SHEPHERDSTOWN HISTORIC SURVEY
2. Shepherdstown, WV
3. March 1986
4. Photo by Paula S. Reed
5. Neg. Location: Hagerstown, MD
Preservation Associates, Inc.
6. View: S. Side W. German St.
Between King & Church Sts. S.
7. Photo # 58



59

1. SHEPHERDSTOWN HISTORIC SURVEY
2. Shepherdstown, WV
3. March 1986
4. Photo by Paula S. Reed
5. Neg. Location: Hagerstown, MD
Preservation Associates, Inc.
6. View: S. Side W. German St., toward
Church St. SW
7. Photo # 59



1. SHEPHERDSTOWN HISTORIC SURVEY
2. Shepherdstown, WV
3. March 1986
4. Photo by Paula S. Reed
5. Neg. Location: Hagerstown, MD
Preservation Associates, Inc.
6. View: S. Side W. German St. from
Church St. SE
7. Photo # 60



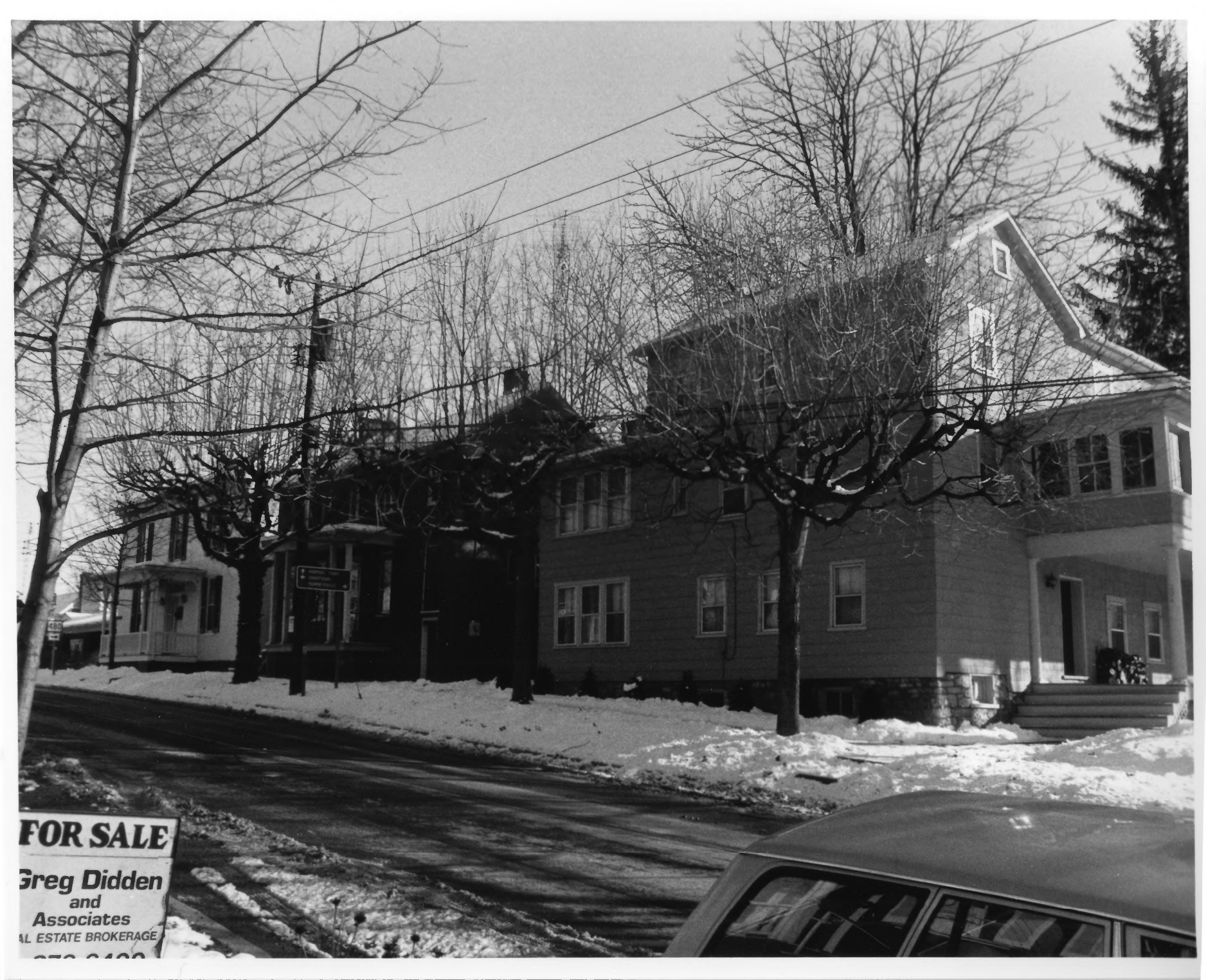
61

1. SHEPHERDSTOWN HISTORIC SURVEY
2. Shepherdstown, WV
3. March 1986
4. Photo by Paula S. Reed
5. Neg. Location: Hagerstown, MD
Preservation Associates, Inc.
6. View: S. Side W. German St. between
Church & Duke Sts. SE
7. Photo # 61



62

1. SHEPHERDSTOWN HISTORIC SURVEY
2. Shepherdstown, WV
3. March 1986
4. Photo by Paula S. Reed
5. Neg. Location: Hagerstown, MD
Preservation Associates, Inc.
6. View: Site # 170 S.
7. Photo # 62



FOR SALE
Greg Didden
and
Associates
REAL ESTATE BROKERAGE
850 2400

480

480

1. SHEPHERDSTOWN HISTORIC SURVEY.
2. Shepherdstown, WV
3. March 1986
4. Photo by Paula S. Reed
5. Neg. Location: Hagerstown, MD
Preservation Associates, Inc.
6. View: S. Side W. German St. toward
Duke St. SE
7. Photo # 63



64

1. SHEPHERDSTOWN HISTORIC SURVEY
2. Shepherdstown, WV
3. March 1986
4. Photo by Paula S. Reed
5. Neg. Location: Hagerstown, MD
Preservation Associates, Inc.
6. View: S. Side, W. German St. from
Shoe Lane, SW
7. Photo # 64



65

1. SHEPHERDSTOWN HISTORIC SURVEY
2. Shepherdstown, WV
3. March 1986
4. Photo by Paula S. Reed
5. Neg. Location: Hagerstown, MD
Preservation Associates, Inc.
6. View: N. Side W. New St., E. of
Duke St. NW
7. Photo # 65



66

163

1. SHEPHERDSTOWN HISTORIC SURVEY
2. Shepherdstown, WV
3. March 1986
4. Photo by Paula S. Reed
5. Neg. Location: Hagerstown, MD
Preservation Associates, Inc.
6. View: S. Side W. New St., E. of
Duke St. S.W.
7. Photo # 66



1. SHEPHERDSTOWN HISTORIC SURVEY
2. Shepherdstown, WV
3. March 1986
4. Photo by Paula S. Reed
5. Neg. Location: Hagerstown, MD
Preservation Associates, Inc.
6. View: Site 192, N
7. Photo # 67



68

1. SHEPHERDSTOWN HISTORIC SURVEY
2. Shepherdstown, WV
3. March 1986
4. Photo by Paula S. Reed
5. Neg. Location: Hagenstown, MD
Preservation Associates, Inc.
6. View: Site 195 SE
7. Photo # 68



69

1. SHEPHERDSTOWN HISTORIC SURVEY
2. Shepherdstown, WV
3. March 1986
4. Photo by Paula S. Reed
5. Neg. Location: Hagerstown, MD
Preservation Associates, Inc.
6. View: W. New St., S. Side from King
7. Photo # ^{SW}69



1. SHEPHERDSTOWN HISTORIC SURVEY
2. Shepherdstown, WV
3. March 1986
4. Photo by Paula S. Reed
5. Neg. Location: Hagerstown, MD
Preservation Associates, Inc.
6. View: E. New St. from King St. SE
7. Photo #70



1. SHEPHERDSTOWN HISTORIC SURVEY
2. Shepherdstown, WV
3. March 1986
4. Photo by Paula S. Reed
5. Neg. Location: Hagerstown, MD
Preservation Associates, Inc.
6. View: N. Side E. New St. from
Princess St. NW
7. Photo # 71



1. SHEPHERDSTOWN HISTORIC SURVEY
2. Shepherdstown, WV
3. March 1986
4. Photo by Paula S. Reed
5. Neg. Location: Hagerstown, MD
Preservation Associates, Inc.
6. View: SW corner New & Princess Sts.
7. Photo # ^{NW} 72



1. SHEPHERDSTOWN HISTORIC SURVEY
2. Shepherdstown, WV
3. March 1986
4. Photo by Paula S. Reed
5. Neg. Location: Hagerstown, MD
Preservation Associates, Inc.
6. View: Sites 207, 208 NE
7. Photo #73



1. SHEPHERDSTOWN HISTORIC SURVEY
2. Shepherdstown, WV
3. March 1986
4. Photo by Paula S. Reed
5. Neg. Location: Hagerstown, MD
Preservation Associates, Inc.
6. View: From Back Alley, W. of Princess
St., NW
7. Photo # 74



75

1. SHEPHERDSTOWN HISTORIC SURVEY
2. Shepherdstown, WV
3. March 1986
4. Photo by Paula S. Reed
5. Neg. Location: Hagerstown, MD
Preservation Associates, Inc.
6. View: *From Back Alley, W. of
Princess St. N.*
7. Photo # *75*



1. SHEPHERDSTOWN HISTORIC SURVEY
2. Shepherdstown, WV
3. March 1986
4. Photo by Paula S. Reed
5. Neg. Location: Hagerstown, MD
Preservation Associates, Inc.
6. View: From Back Alley at King St.
NW
7. Photo # 76



1. SHEPHERDSTOWN HISTORIC SURVEY
2. Shepherdstown, WV
3. March 1986
4. Photo by Paula S. Reed
5. Neg. Location: Hagerstown, MD
Preservation Associates, Inc.
6. View: From Back Alley, w. of King St.
N. View
7. Photo # 77



1. SHEPHERDSTOWN HISTORIC SURVEY
2. Shepherdstown, WV
3. March 1986
4. Photo by Paula S. Reed
5. Neg. Location: Hagerstown, MD
Preservation Associates, Inc.
6. View: S. Duke St. from New St.
SW
7. Photo # 78



79

1. SHEPHERDSTOWN HISTORIC SURVEY
2. Shepherdstown, WV
3. March 1986
4. Photo by Paula S. Reed
5. Neg. Location: Hagerstown, MD
Preservation Associates, Inc.
6. View: W. German St. S. Side at
Brown's Alley
7. Photo # 79



STOP

1. SHEPHERDSTOWN HISTORIC SURVEY
2. Shepherdstown, WV
3. March 1986
4. Photo by Paula S. Reed
5. Neg. Location: Hagerstown, MD
Preservation Associates, Inc.
6. View: W. German St. S. Side from
Brown's Alley, SW
7. Photo # 80



1. SHEPHERDSTOWN HISTORIC SURVEY
2. Shepherdstown, WV
3. March 1986
4. Photo by Paula S. Reed
5. Neg. Location: Hagerstown, MD
Preservation Associates, Inc.
6. View: W. German St. N. Side from
Maiden Lane, NW
7. Photo # 81



1. SHEPHERDSTOWN HISTORIC SURVEY
2. Shepherdstown, WV
3. March 1986
4. Photo by Paula S. Reed
5. Neg. Location: Hagerstown, MD
Preservation Associates, Inc.
6. View: W. German St., N. Side, west
of Maiden Lane, NW
7. Photo # 82



1. SHEPHERDSTOWN HISTORIC SURVEY
2. Shepherdstown, WV
3. March 1986
4. Photo by Paula S. Reed
5. Neg. Location: Hagerstown, MD
Preservation Associates, Inc.
6. View: W. German St. S. Side from
Maiden Lane, S.W.
7. Photo # 83



84

1. SHEPHERDSTOWN HISTORIC SURVEY
2. Shepherdstown, WV
3. March 1986
4. Photo by Paula S. Reed
5. Neg. Location: Hagerstown, MD
Preservation Associates, Inc.
6. View: Site #240 SE
7. Photo # 84



1. SHEPHERDSTOWN HISTORIC SURVEY
2. Shepherdstown, WV
3. March 1986
4. Photo by Paula S. Reed
5. Neg. Location: Hagerstown, MD
Preservation Associates, Inc.
6. View: S. Side W. High St. from
Brown's Alley SE
7. Photo # 85



1. SHEPHERDSTOWN HISTORIC SURVEY
2. Shepherdstown, WV
3. March 1986
4. Photo by Paula S. Reed
5. Neg. Location: Hagerstown, MD
Preservation Associates, Inc.
6. View: S. Side W. High St. from
Shoe Lane, SE
7. Photo # 86



1. SHEPHERDSTOWN HISTORIC SURVEY
2. Shepherdstown, WV
3. March 1986
4. Photo by Paula S. Reed
5. Neg. Location: Hagerstown, MD
Preservation Associates, Inc.
6. View: S. King St. from Washington St.
NE
7. Photo # 87



Shepherdstown Presbyterian Church. Paula S. Reed, 1986

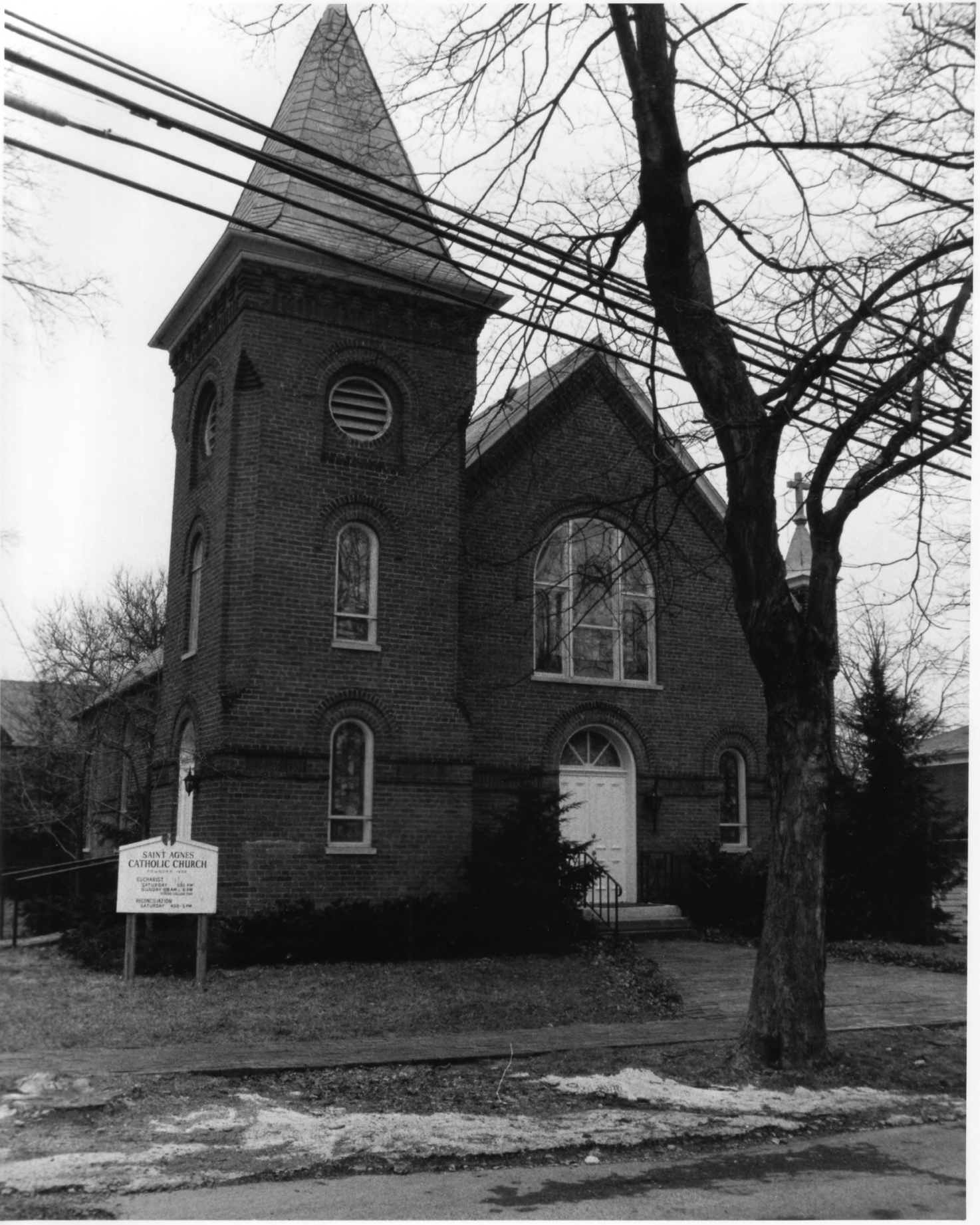


89

1. SHEPHERDSTOWN HISTORIC SURVEY
2. Shepherdstown, WV
3. March 1986
4. Photo by Paula S. Reed
5. Neg. Location: Hagerstown, MD
Preservation Associates, Inc.
6. View: S. Side W. Washington St. east
of Church St. SE
7. Photo # 89



1. SHEPHERDSTOWN HISTORIC SURVEY
2. Shepherdstown, WV
3. March 1986
4. Photo by Paula S. Reed
5. Neg. Location: Hagerstown, MD
Preservation Associates, Inc.
6. View: S. Side W. Washington St.
toward Church St. SE
7. Photo # 90



SAINT AGNES
CATHOLIC CHURCH
EUCCHARIST
SATURDAY 8:00 PM
SUNDAY 8:00 AM, 9:30 AM
MICROCANTON
SATURDAY 4:00-5:00 PM

1. SHEPHERDSTOWN HISTORIC SURVEY
2. Shepherdstown, WV
3. March 1986
4. Photo by Paula S. Reed
5. Neg. Location: Hagerstown, MD
Preservation Associates, Inc.
6. View: Site #270 W.
7. Photo # 91



92

1. SHEPHERDSTOWN HISTORIC SURVEY
2. Shepherdstown, WV
3. March 1986
4. Photo by Paula S. Reed
5. Neg. Location: Hagerstown, MD
Preservation Associates, Inc.
6. View: w. Side Church St. between
Washington & New sts. NW
7. Photo # 92



93

1. SHEPHERDSTOWN HISTORIC SURVEY
2. Shepherdstown, WV
3. March 1986
4. Photo by Paula S. Reed
5. Neg. Location: Hagerstown, MD
Preservation Associates, Inc.
6. View: N. Side Prospect Ave. from
King St. N.W.
7. Photo # 93



94

key

1. SHEPHERDSTOWN HISTORIC SURVEY
2. Shepherdstown, WV
3. March 1986
4. Photo by Paula S. Reed
5. Neg. Location: Hagerstown, MD
Preservation Associates, Inc.
6. View: N. Side Prospect Ave. E. of
Church St. NE
7. Photo # 94



95

1. SHEPHERDSTOWN HISTORIC SURVEY
2. Shepherdstown, WV
3. March 1986
4. Photo by Paula S. Reed
5. Neg. Location: Hagerstown, MD
Preservation Associates, Inc.
6. View: N. Side Fairmont Ave. from
King St. NW
7. Photo # 95



96

1. SHEPHERDSTOWN HISTORIC SURVEY
2. Shepherdstown, WV
3. March 1986
4. Photo by Paula S. Reed
5. Neg. Location: Hagerstown, MD
Preservation Associates, Inc.
6. View: Fairmont & Church Sts, NE
7. Photo # 96



97

1. SHEPHERDSTOWN HISTORIC SURVEY
2. Shepherdstown, WV
3. March 1986
4. Photo by Paula S. Reed
5. Neg. Location: Hagerstown, MD
Preservation Associates, Inc.
6. View: Elmwood Cemetery, S.
7. Photo # 97



98

1. SHEPHERDSTOWN HISTORIC SURVEY
2. Shepherdstown, WV
3. March 1986
4. Photo by Paula S. Reed
5. Neg. Location: Hagerstown, MD
Preservation Associates, Inc.
6. View: S. Princess St. N.
7. Photo # 98



99

1. SHEPHERDSTOWN HISTORIC SURVEY
2. Shepherdstown, WV
3. March 1986
4. Photo by Paula S. Reed
5. Neg. Location: Hagerstown, MD
Preservation Associates, Inc.
6. View: E. German St. extended from
Ray St. NW
7. Photo # 99



100

1. SHEPHERDSTOWN HISTORIC SURVEY
2. Shepherdstown, WV
3. March 1986
4. Photo by Paula S. Reed
5. Neg. Location: Hagerstown, MD
Preservation Associates, Inc.
6. View: W. Side Bay St. SW view
7. Photo # 100



101

1. SHEPHERDSTOWN HISTORIC SURVEY
2. Shepherdstown, WV
3. March 1986
4. Photo by Paula S. Reed
5. Neg. Location: Hagerstown, MD
Preservation Associates, Inc.
6. View: E. Side Bay St. NE
7. Photo # 101



102

1. SHEPHERDSTOWN HISTORIC SURVEY
2. Shepherdstown, WV
3. Photo Date: March 1986
4. Photo by Paula S. Reed
5. Neg. Location: Hagerstown, MD
Preservation Associates, Inc.
6. View Site 318, SE
7. Photo # 102



103

1. SHEPHERDSTOWN HISTORIC SURVEY
2. Shepherdstown; WV
3. Photo Date: March 1986
4. Photo by Paula S. Reed
5. Neg. Location: Hagerstown, MD
Preservation Associates, Inc.
6. View Site 317 E.
7. Photo # 103