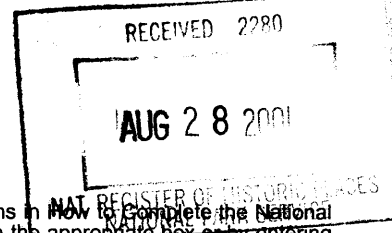


United States Department of the Interior  
National Park Service

NATIONAL REGISTER OF HISTORIC PLACES  
REGISTRATION FORM

1084



This form is for use in nominating or requesting determinations for individual properties and districts. See instructions in **How to Complete the National Register of Historic Places Registration Form (National Register Bulletin 16A)**. Complete each item by marking "x" in the appropriate box or by entering the information requested. If any item does not apply to the property being documented, enter "N/A" for "not applicable." For functions, architectural classification, materials, and areas of significance, enter only categories and subcategories from the instructions. Place additional entries and narrative items on continuation sheets (NPS Form 10-900a). Use a typewriter, word processor, or computer, to complete all items.

1. Name of Property

historic name BETHEL SCHOOL

other names/site number NA

2. Location

street & number County Road 149 N/A  not for publication

city or town Monticello  vicinity

state FLORIDA code FL county Jefferson code 065 zip code 32344

3. State/Federal Agency Certification

As the designated authority under the National Historic Preservation Act, as amended, I hereby certify that this  nomination  request for determination of eligibility meets the documentation standards for registering properties in the National Register of Historic Places and meets the procedural and professional requirements set forth in 36 CFR Part 60. In my opinion, the property  meets  does not meet the National Register criteria. I recommend that this property be considered significant  nationally  statewide  locally. ( See continuation sheet for additional comments.)

Janet Snyder Hartland 8/26/2001  
Signature of certifying official/Title Date

Florida State Historic Preservation Officer, Division of Historical Resources  
State or Federal agency and bureau

In my opinion, the property  meets  does not meet the National Register criteria. ( See continuation sheet for additional comments.)

\_\_\_\_\_  
Signature of certifying official/Title Date

\_\_\_\_\_  
State or Federal agency and bureau

4. National Park Service Certification

I hereby certify that the property is:

- entered in the National Register  See continuation sheet
- determined eligible for the National Register  See continuation sheet.
- determined not eligible for the National Register  See continuation sheet.
- removed from the National Register.
- other, (explain) \_\_\_\_\_

Signature of the Keeper

**Entered in the  
National Register**

Date of Action

10/12/01

**5. Classification**

**Ownership of Property**

(Check as many boxes as apply)

- private
- public-local
- public-State
- public-Federal

**Category of Property**

(Check only one box)

- buildings
- district
- site
- structure
- object

**Number of Resources within Property**

(Do not include any previously listed resources in the count)

Contributing	Noncontributing	
2	0	buildings
0	0	sites
0	0	structures
0	0	objects
2	0	total

**Name of related multiple property listings**

(Enter "N/A" if property is not part of a multiple property listing.)

"N/A"

**Number of contributing resources previously listed in the National Register**

0

**6. Function or Use**

**Historic Functions**

(Enter categories from instructions)

EDUCATION: school

**Current Functions**

(Enter categories from instructions)

DWELLING: single family

**7. Description**

**Architectural Classification**

(Enter categories from instructions)

OTHER: Frame Vernacular

**Materials**

(Enter categories from instructions)

foundation BRICK

walls WOOD

roof ASBESTOS

other

**Narrative Description**

(Describe the historic and current condition of the property on one or more continuation sheets.)

**8. Statement of Significance**

**Applicable National Register Criteria**

(Mark "x" in one or more boxes for the criteria qualifying the property for National Register listing.)

- A** Property is associated with events that have made a significant contribution to the broad patterns of our history.
- B** Property is associated with the lives of persons significant in our past.
- C** Property embodies the distinctive characteristics of a type, period, or method of construction or represents the work of a master, or possesses high artistic values, or represents a significant and distinguishable entity whose components lack individual distinction.
- D** Property has yielded, or is likely to yield information important in prehistory or history.

**Criteria Considerations**

(Mark "x" in all the boxes that apply.)

Property is:

- A** owned by a religious institution or used for religious purposes.
- B** removed from its original location.
- C** a birthplace or grave.
- D** a cemetery.
- E** a reconstructed building, object, or structure.
- F** a commemorative property.
- G** less than 50 years of age or achieved significance within the past 50 years

**Narrative Statement of Significance**

(Explain the significance of the property on one or more continuation sheets.)

**Areas of Significance**

(Enter categories from instructions)

EDUCATION

SOCIAL HISTORY

**Period of Significance**

1903-1951

**Significant Dates**

1903

**Significant Person**

N/A

**Cultural Affiliation**

N/A

**Architect/Builder**

unknown

**9. Major Bibliographical References**

**Bibliography**

Cite the books, articles, and other sources used in preparing this form on one or more continuation sheets.)

**Previous documentation on file (NPS):**

- preliminary determination of individual listing (36 CFR 36) has been requested
- previously listed in the National Register
- previously determined eligible by the National Register
- designated a National Historic Landmark
- recorded by Historic American Buildings Survey # \_\_\_\_\_
- recorded by Historic American Engineering Record

**Primary location of additional data:**

- State Historic Preservation Office
- Other State Agency
- Federal agency
- Local government
- University
- Other

Name of Repository

# \_\_\_\_\_

Bethel School  
Name of Property

Jefferson Co., FL  
County and State

10. Geographical Data

Acreege of Property one

UTM References

(Place additional references on a continuation sheet.)

1	1 7	2 2 7 9 4 0	3 3 9 0 2 4 0
	Zone	Easting	Northing
2			

3			
	Zone	Easting	Northing
4			

See continuation sheet

Verbal Boundary Description

(Describe the boundaries of the property on a continuation sheet.)

Boundary Justification

(Explain why the boundaries were selected on a continuation sheet.)

11. Form Prepared By

name/title Rebecca H. Dean/Robert O. Jones, Historic Sites Specialist

organization Bureau of Historic Preservation date August 2001

street & number R.A. Gray Building, 500 S. Bronough Street telephone (850) 245-6333

city or town Tallahassee state Florida zip code 32399-0250

Additional Documentation

Submit the following items with the completed form:

Continuation Sheets

Maps

A **USGS map** (7.5 or 15 minute series) indicating the property's location.

A **Sketch map** for historic districts and properties having large acreage or numerous resources.

Photographs

Representative **black and white photographs** of the property.

Additional items

(check with the SHPO or FPO for any additional items)

Property Owner

(Complete this item at the request of SHPO or FPO.)

name Rebecca H. Dean

street & number 9221 NW 11th Place telephone 325-322-9028

city or town Gainesville state FL zip code 32606

**Paperwork Reduction Act Statement:** This information is being collected for applications to the National Register of Historic Places to nominate properties for listing or determine eligibility for listing, to list properties, and amend listings. Response to this request is required to obtain a benefit in accordance with the National Historic Preservation Act, as amended (16 U.S.C. 470 et seq.).

**Estimated Burden Statement:** Public reporting burden for this form is estimated to average 18.1 hours per response including time for reviewing instructions, gathering and maintaining data, and completing and reviewing the form. Direct comments regarding this burden estimate or any aspect of this form to the Chief, Administrative Services Division, National Park Service, P.O. Box 37127, Washington, DC 20013-7127; and the Office of Management and Budget, Paperwork Reductions Projects (1024-C018), Washington, DC 20503.

**United States Department of the Interior  
National Park Service**

**NATIONAL REGISTER OF HISTORIC PLACES  
CONTINUATION SHEET**

Section number 7 Page 1 **BETHEL SCHOOL, JEFFERSON COUNTY, FL**

---

**SUMMARY**

Bethel School is located in Jefferson County, Florida. The school is a rectangular, frame vernacular building that was constructed in 1903, on a brick pier foundation. The building has a side-gable roof with asbestos tile surface, exterior drop siding, and windows with double hung wooden sashes. A large gable roofed porch dominates the façade.

**SETTING**

The school is located on one acre of land that is on a slight hill and dotted with oaks, pines, dogwood, and other native trees. The property contains a frame outbuilding pump house. At each corner of the east side of the property are holes where outhouses were located. The north one was for the girls and the south one was for the boys. The school is located approximately four and a half miles northeast of Monticello, Florida, three miles from the Georgia border, on the east side of County Road 149. This north/south road leads north to Boston, Georgia. County Road 149 is also known as the Boston Highway or the Grooverville Road. This area began to be settled in the 1820s. A Methodist Church and cemetery, and later the Bethel School, formed the center of the community. The church is gone but the cemetery remains across the road from the school.

**PHYSICAL DESCRIPTION**

**Exterior**

The rectangular school sits on brick piers about two feet off the ground. Exterior walls are horizontal siding. The side gable roof has asbestos shingles with rounded ridge caps. Fenestration is primarily 4/4 double-hung wooden sashes set within rectangular windows with flat arched wooden framing.

The main (west) façade of Bethel School faces onto Highway 149 (Photo #1). It is dominated by a large, central, projecting gabled porch that spans roughly a third of the elevation. The porch is accessed by five broad concrete steps with concrete cheeks. The ridge of the projecting roof intersects with the slope of the main roof, and its eaves align with the eaves of the main roof. The porch roof is enclosed with horizontal siding, and is supported by four square wooden posts. A rectangular louvered vent is in the peak of the enclosed gable, and the corners of the eaves are supported by timber brackets. On the porch is one paneled wooden door offset toward the north. The location of a second door to the south is indicated by seams of the enclosing paneling. Flanking these two door locations are two windows, and flanking the porch are two windows.

The south and north elevations have gable ends with broad roof overhangs supported on the corners with timber brackets (Photos #2,3). Centered in each elevation is a four sash window.

The east elevation is dominated by a projecting gabled roof that shelters five wooden stair that rise to a screened in porch. Entry to the building is through two, paneled wooden doors with two lights (Photo #4). The ridge of this projecting roof connects to the building beneath the main roof eaves. The porch is supported by two concrete piers approximately two feet high. A pair of two small, two-light, fixed wooden sashes separated

**United States Department of the Interior  
National Park Service**

**NATIONAL REGISTER OF HISTORIC PLACES  
CONTINUATION SHEET**

Section number 7 Page 2 **BETHEL SCHOOL, JEFFERSON COUNTY, FL**

---

by a vertical mullion, are to the south of the steps. Within the wall to the south and north are two windows with the same configuration as on the west elevation.

**Interior**

The floors, walls and ceiling are of three-inch tongue & groove pine boards. The ceiling is twelve feet high. Within the main door is a foyer. To the south it opens to a large room that is half the building. An elevated stage spans the south end of the room (Photos #5, 6). A large window is centered at the back of the stage. A door to the northeast corner of the room leads outside. Two steps at either end of the stage provide access. Historic shelving in the southeast corner has been retained. A kitchen with a pass-through counter is to the north (Photo #7). To the west of the kitchen and foyer is a bedroom with bathroom against the east wall (Photo #8). A historic closet is in the northwest corner. A large window is in the north wall. In each room by the west entrance are two chimney flues where wood stoves once stood (Photo #9).

**ADDITIONAL RESOURCE**

There is a small rectangular, front gable, frame out-building (Photo #10). It has horizontal siding and a metal surfaced roof. It was used to shelter the well and hold the pump and remnants of a water fountain. The building is located near the northeast corner of the school, is aligned diagonally to the school, and faces west.

**ALTERATIONS**

In 1903 there was a front room where the west porch now is. It had the same type of large window, composed of four sashes, as is still present on the south and north elevations. The room had doors on the north and south, and there was a bell tower above this room. Probably in the 1920s, after high school level education at Bethel ceased in 1923, this room was converted into an open porch. The stage was enlarged two as indicated by the use of three types of lumber. When the school was acquired by the current owners in the late 1990s, the school had two equal rooms. To adapt the school as a dwelling, in 1999, a kitchen, bathroom, privacy doors, were installed in the northern room. One partition enclosing the kitchen partially filled in part of a large opening between the two rooms. The beam spanning that opening was sagging and needed support. A sink under the shelves on the stage was removed. The southern of two doors in the main facade was enclosed. A rear, eastern screened porch was built retaining the two supporting concrete piers and the porch roof. The building was painted. Despite the alterations to the northern room, the school retains its historic integrity and character, especially on the exterior.

**United States Department of the Interior  
National Park Service**

**NATIONAL REGISTER OF HISTORIC PLACES  
CONTINUATION SHEET**

Section number 8 Page 1 **BETHEL SCHOOL, JEFFERSON COUNTY, FL**

---

**SUMMARY**

The Bethel School is nominated to the National Register for local level significance under Criterion A in the areas of Education and Social History. The building played a large role in rural education for Jefferson County as an elementary and high school. The school was also the recreation and social center for the small community of Bethel from 1903 throughout the historic period.

**HISTORIC AND EDUCATIONAL CONTEXT**

Shortly after Spain turned Florida over to the United States in 1821, settlers began moving into North Florida to seek good land for farming. Small farms still define the landscape of the Florida counties bordering Georgia. Jefferson County was established in 1827; Monticello became the county seat, and remains the largest urban center in the predominantly rural county.

Early settlement occurred in the Bethel area by the 1820's, as indicated by the 1824 land surveys undertaken by the new territorial government. A site two miles north of the current school became the location of an early log Methodist church. Great religious revivals were held there during ante-bellum times, drawing upon the populations of North Florida and South Georgia (McRory, 1935: 63). Soon after 1860, a Nathan Lamb gave two acres, subject to a mortgage by Samuel Puleston, that provided for a church and the laying out of a cemetery for Bethel Methodist Church. The church then relocated to the current site where the school and cemetery remain. A Rev. Bryan founded the new church (McRory, 1935: 63). Brief mention is made in Shofner's county history that during the Civil War Confederate troops rode the train from Tallahassee to Monticello, and then marched to Boston, Georgia, through the Bethel community.

Since the times of early settlement, residents of Jefferson County showed a heightened interest in education. As early as the 1830s and 1840s, private academies were begun in Monticello. In the community of Aucilla, in 1840, an Aucilla Academy was begun. In 1841, Marion Crossorads (now known as Capps) started their own public school. By the 1850s, the communities of Waukeenah and Miccosukee had schools (Shofner, 1976: 207). According to some oral histories, the early Bethel community had a school as well. In the vicinity of the Methodist log church, a school was built about 1835 or 1840.

**HISTORIC SIGNIFICANCE**

In an effort to promote public education in their community, in 1903, Thomas S., and Mary H. Johnson donated an acre of their property across from the Methodist Church to the school board for educational uses. This offer would be revoked upon the termination of educational activities (Deed, 1903).

The construction of Bethel School was probably like that of other schools mentioned in board minutes. Patrons of the school (trustees/parents) typically would request a school for their neighborhood and the school board would help furnish the materials for building the school, and later supplies and teachers. It was up to the

**United States Department of the Interior  
National Park Service**

**NATIONAL REGISTER OF HISTORIC PLACES  
CONTINUATION SHEET**

Section number 8 Page 2 **BETHEL SCHOOL, JEFFERSON COUNTY, FL**

---

patrons to actually construct the building. With the location of the school across from the church and cemetery in 1903, if not earlier, their proximity created a community center for Bethel community (McRory, 1935: 70).

The Bethel School year of 1903 was delayed 2 months because construction was not finished. The Narrative Reports of County Superintendents in their report of 1903-04 described the new consolidated school:

a new, roomy, attractive building with three rooms. The children from the two other directions are hauled to this school house by two large vans, that can seat 25 scholars, each, two horses being required to draw them. This school has been a great success from the very day it was opened, the enrollment of the three schools, while separated was 80, with an average attendance of 60's the enrollment of the consolidated school is 90, and the average attendance 75. The cost of maintaining the present consolidated school is greater than that of the three separate schools, but when the increased attendance, and quality of the instruction imparted is considered, there can be no possible comparison as to the relative value of the two systems.

The first teachers were hired in 1903, but due to the construction delay, classes did not begin until November. The principal was paid \$60 a month, the assistant \$35, and a teacher \$30. There were two bus drivers who were paid \$37 a month for transporting the students by mule wagon. The total sum of supplies for the first year, \$24.19, was spent on furniture. A supply closet was built in 1905 for a sum total of \$15. The three room school building served first grade through high school; at one time it had the largest high school attendance in rural Jefferson County.

Most students were delivered to school by bus; a few lived within walking distance. School days began at 8:00 and lasted until 4:00. The students brought lunches to school in lunch pails, as no lunchroom facilities were available. Parents of students served as trustees of the school and were in charge of maintenance, grounds upkeep, wood for the stove and other matters pertaining to the school.

W.M. Scruggs became superintendent of schools, and promoted further consolidation. In 1923, the high school grades from Bethel, Lloyd, Waukeenah, and Wacissa schools consolidated in Monticello. Jefferson was the first county to consolidate schools in the state. After 1923, grades 1-6 were taught at Bethel. In 1934, Bethel School had 3 teachers and 65 students in grades 1 - 6. By 1935, grades 1-8 were taught with three teachers. Sometime following consolidation in 1923, the third (front) room was removed, along with the belfry on the roof. Students who attended in the 1930s remembered there being two rooms.

The school was also the site of community activities. On May 8, 1926, the school had a picnic at Raysor Lake. On October 22, 1926, there was a box supper held at the school to benefit the school, short plays, recitations and music served as the entertainment. On October 31, 1929, the Bethel PTA held a Halloween Carnival. Hot dogs and marshmallows were sold, along with hot cocoa, to benefit the school and purchase games for the students. In 1939 the Bethel Home Demonstration Club was organized and met occasionally at the school building. The school was active at least until the early 1940's, but was closed by 1946. Prior to, and beyond the 1940s, the school was used as a meeting place and voting precinct for the community. Groups such



**United States Department of the Interior  
National Park Service**

**NATIONAL REGISTER OF HISTORIC PLACES  
CONTINUATION SHEET**

Section number 8 Page 3 **BETHEL SCHOOL, JEFFERSON COUNTY, FL**

---

as the Home Demonstration Club met occasionally at the school, and various groups used it as a setting for picnics and other community outings.

In 1994-1996, citizens petitioned the county school board to save the Bethel School. This community effort revealed the names of some of the students educated during the historic period. They were: Gilbert Barnes, Franklin Barrett, Winnie Barrett, John W. Barrett, Leon Clugger, Mamie Davis, Nell Davis, Luther Davis, R M Gilbert, Maggie Stokley, and J F Wooten.

Descendents of Thomas and Mary Johnson deeded to property to the School Board of Jefferson County following the closure of the school in 1946.

Besides the Bethel School, there is only one other rural Jefferson County school considered to be potentially eligible for listing in the National Register. The nomination of the Bethel School is a big step towards public recognition of the role of public education in rural Jefferson County, and the importance this building had to the small community of Bethel.

**United States Department of the Interior  
National Park Service**

**NATIONAL REGISTER OF HISTORIC PLACES  
CONTINUATION SHEET**

Section number   9   Page   1   **BETHEL SCHOOL, JEFFERSON COUNTY, FL**

---

**BIBLIOGRAPHY**

Bush, George Gary, History of Education in Florida, Washington D.C., Washington Government Printing Office 1889.

McRory, Mary Oakley, and Edith Clarke Barrows, History of Jefferson County Florida, Monticello, Florida: Kiwanis Club, 1935.

Shofner, Jerrell H., History of Jefferson County, Tallahassee: Sentry Press, 1976.

Jefferson County, 1903 Deed-Book BB, 1947 Deed-Book OOD. County Clerk's Office.

Jefferson County School Board Minutes, 1903 – 1909

Paisley, Clifton. The Red Hills of Florida, 1528 – 1865. Tuscaloosa, Alabama; University of Alabama Press, 1989.

Dovell, Junius E., Florida: Historic, Dramatic, Contemporary, New York: Lewis Historical Pub. Co., 1952.

Florida Lands, Records of the Tallahassee and Newnansville General Land Office, 1825 – 1892, Bowie, Maryland: Heritage Books, Inc., 1986.

Byrd, Flossie, "Education in Jefferson County Florida in Historical Perspective," State Department of Public Instruction. Tallahassee, Narrative Reports of County Superintendents 1892-1924. Research Microfilm 344.3

Interviews with Rebecca Dean, 2000

Mildren Kinred Lanie – Teacher no dates

Frances King Barrett – Student, Grades 1–8 no dates

James Luther Davis – Student, Grades 1–6, 1934 to 1940

Myrtle Barrett Herndon – Student, Grades 1–6 1935 to 1940

James Franklin Barrett – Student, Grades 1-8 1923 to 1931

Ruth Demott Bailey – Student, Grades 1-6, 1932 – 1938

India Linebaugh –

**United States Department of the Interior  
National Park Service**

**NATIONAL REGISTER OF HISTORIC PLACES  
CONTINUATION SHEET**

Section number 10 Page 1 **BETHEL SCHOOL, JEFFERSON COUNTY, FL**

---

**PHYSICAL BOUNDARY DESCRIPTION**

Property #90046  
Parcel #33-3N-E5-0000-0050-0000  
1 acre in NW ¼ of SW ¼ Deed Book-OOD page 416

**BOUNDARY JUSTIFICATION**

This boundary encompassed the property historically associated with the Bethel School.

**United States Department of the Interior  
National Park Service**

**NATIONAL REGISTER OF HISTORIC PLACES  
CONTINUATION SHEET**

Section number \_\_\_\_\_ Photos \_\_\_\_\_ Page 1 **BETHEL SCHOOL, JEFFERSON COUNTY, FL**

---

**PHOTOGRAPHIC LIST**

1. Bethel School, County Road 149
2. Jefferson County, Florida
3. Rebecca Dean, Gainesville, FL
4. October 2000
5. Dean, Gainesville, FL
6. Main (west) façade, looking northeast
7. Photo #1 of 10

The following photographs are the same for items 1-5, except where noted.

6. South elevation, looking north
7. Photo #2 of 10
  
6. North and west elevations, looking south
7. Photo #3 of 10
  
6. East elevation, looking west
7. Photo #4 of 10
  
6. Interior of south room, looking south
7. Photo #5 of 10
  
4. 1997
6. Stage in south room before renovations, looking south
7. Photo #6 of 10
  
6. Central partition and kitchen, looking north
7. Photo #7 of 10
  
6. North room, looking north
7. Photo #8 of 10
  
4. 1997
6. Brick, wood stove flue, looking west
7. Photo #9 of 10

**United States Department of the Interior  
National Park Service**

**NATIONAL REGISTER OF HISTORIC PLACES  
CONTINUATION SHEET**

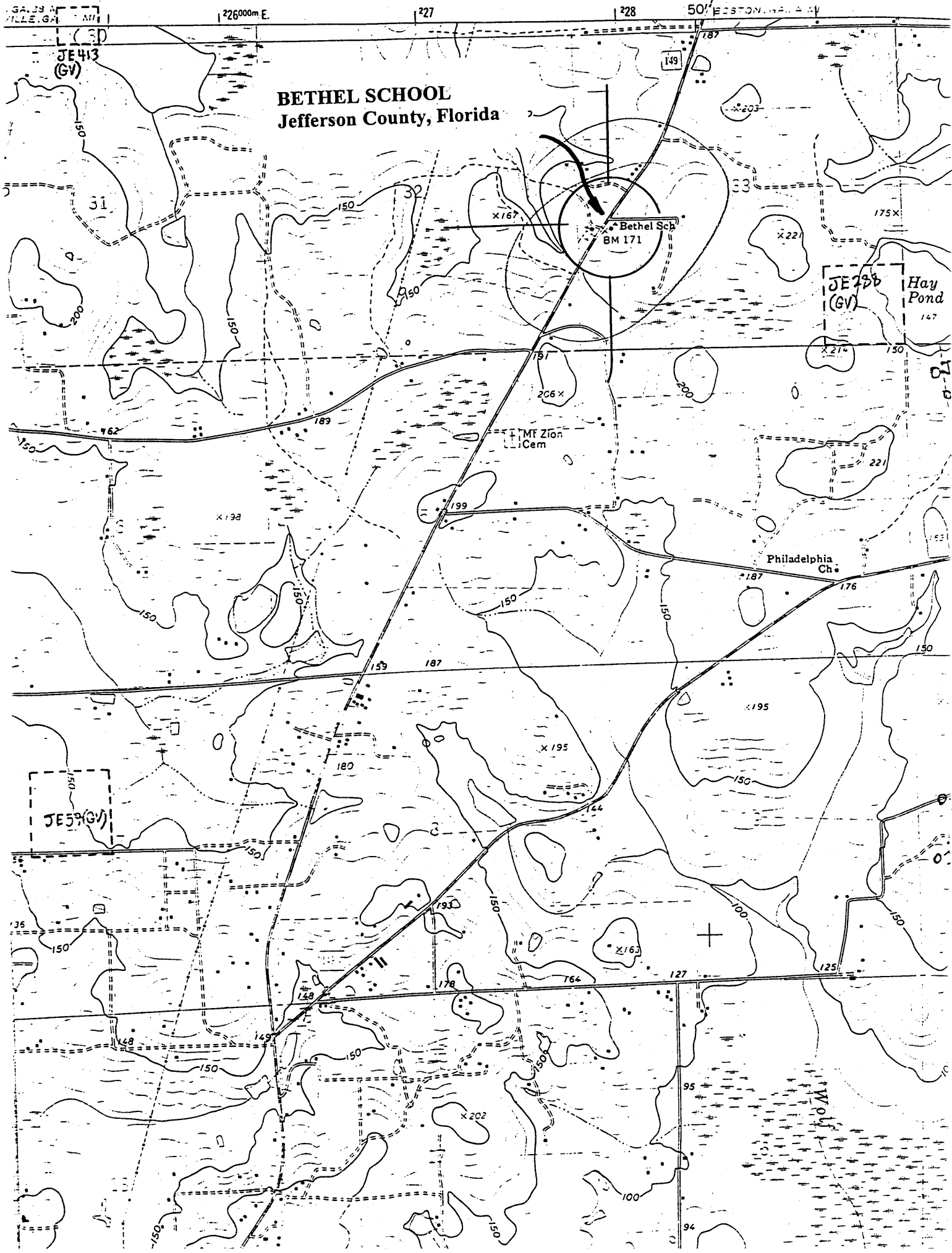
Section number \_\_\_\_\_ Photos \_\_\_\_\_ Page 2 **BETHEL SCHOOL, JEFFERSON COUNTY, FL**

---

6. Out-building for well/pump
7. Photo #10 of 10

DEPARTMENT OF THE INTERIOR  
GEOLOGICAL SURVEY

69' b



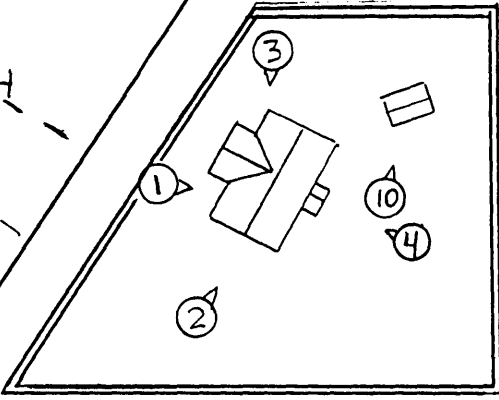


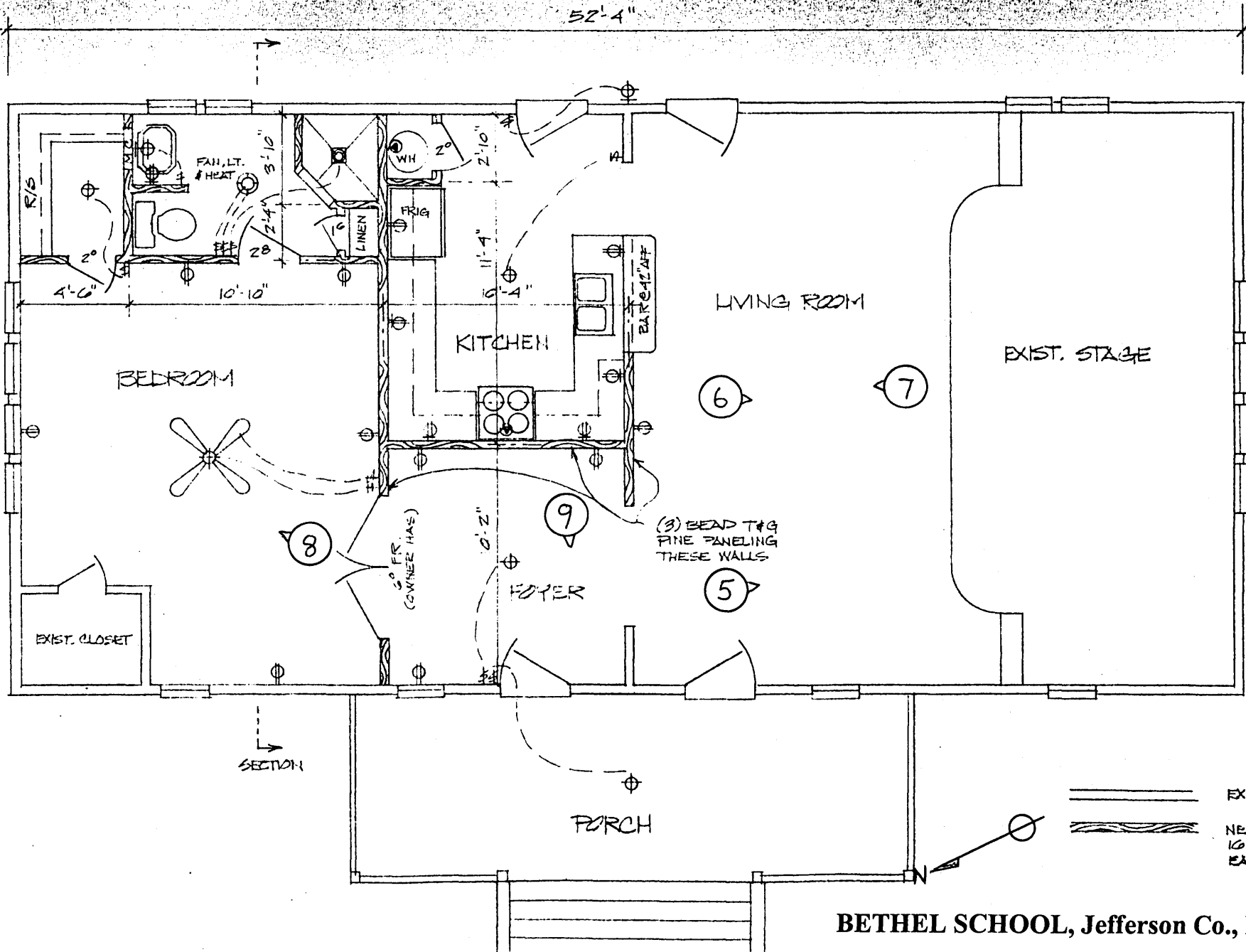
**BETHEL SCHOOL**  
Jefferson County, Florida

HWY 149

SITE OF  
BETHEL CHURCH

BETHEL  
CEMETERY





**BETHEL SCHOOL, Jefferson Co., FL**

Floor Plan & Photo Diagram