



Shadelands Ranch Historical Museum

Walnut Creek, California

Royce A. Bryant

January 1982

Shadelands Ranch Historical Museum (neg.)

Looking north from across Ygnacio Valley

Road

No. 1 of 24



Shardland
RANCH

Shadelands Ranch Historical Museum

Walnut Creek, California

Royce A. Bryant

January 1982

Shadelands Ranch Historical Museum (neg.)

Front of house, looking north

No. 2 of 24



Shadelands Ranch Historical Museum

Walnut Creek, California

Royce A. Bryant

January 1982

Shadelands Ranch Historical Museum (neg.)

East side of house, looking west

No. 3 of 24



Shadelands Ranch Historical Museum

Walnut Creek, California

Royce A. Bryant

January 1982

Shadelands Ranch Historical Museum (neg.)

Back of house, looking south

No. 4 of 24



Shadelands Ranch Historical Museum

Walnut Creek, California.

Royce A. Bryant

January 1982

Shadelands Ranch Historical Museum (neg.)

West side of house, looking east

No. 5 of 24



Shadelands Ranch house

2660 Ygnacio Valley Rd., Walnut
Creek, Contra Costa County, CA

Royce A. Bryant, Feb. 1984

Shadelands Ranch Historical Museum

South Elevation, looking North

Fig. 6 of ~~26~~ 24



Shadelands Ranch house

2660 Ygnacio Valley Rd., Walnut
Creek, Contra Costa County, CA

Royce A. Bryant, Feb. 1984

Shadelands Ranch Historical Museum

Bowed left front, Southwest corner

Fig. 7 of ~~26~~ 24

3



Shadelands Ranch house

2660 Ygnacio Valley Rd., Walnut

Creek, Contra Costa County, CA

Royce A. Bryant, Feb. 1984

Shadelands Ranch Historical Museum

Half round bay extending from porch

Fig. 8 of ~~25~~ 24



Shadelands Ranch house

2660 Ygnacio Valley Rd., Walnut
Creek, Contra Costa County, CA

Royce A. Bryant, Feb. 1984

Shadelands Ranch Historical Museum

Front porch

Fig. 9 of ~~24~~ 24



Shadelands Ranch house

2660 Ygnacio Valley Rd., Walnut
Creek, Contra Costa County, CA

Royce A. Bryant, Feb. 1984

Shadelands Ranch Historical Museum

Front screen door

Fig. 10 of ~~26~~ 24



Shadelands Ranch house

2660 Ygnacio Valley Rd., Walnut

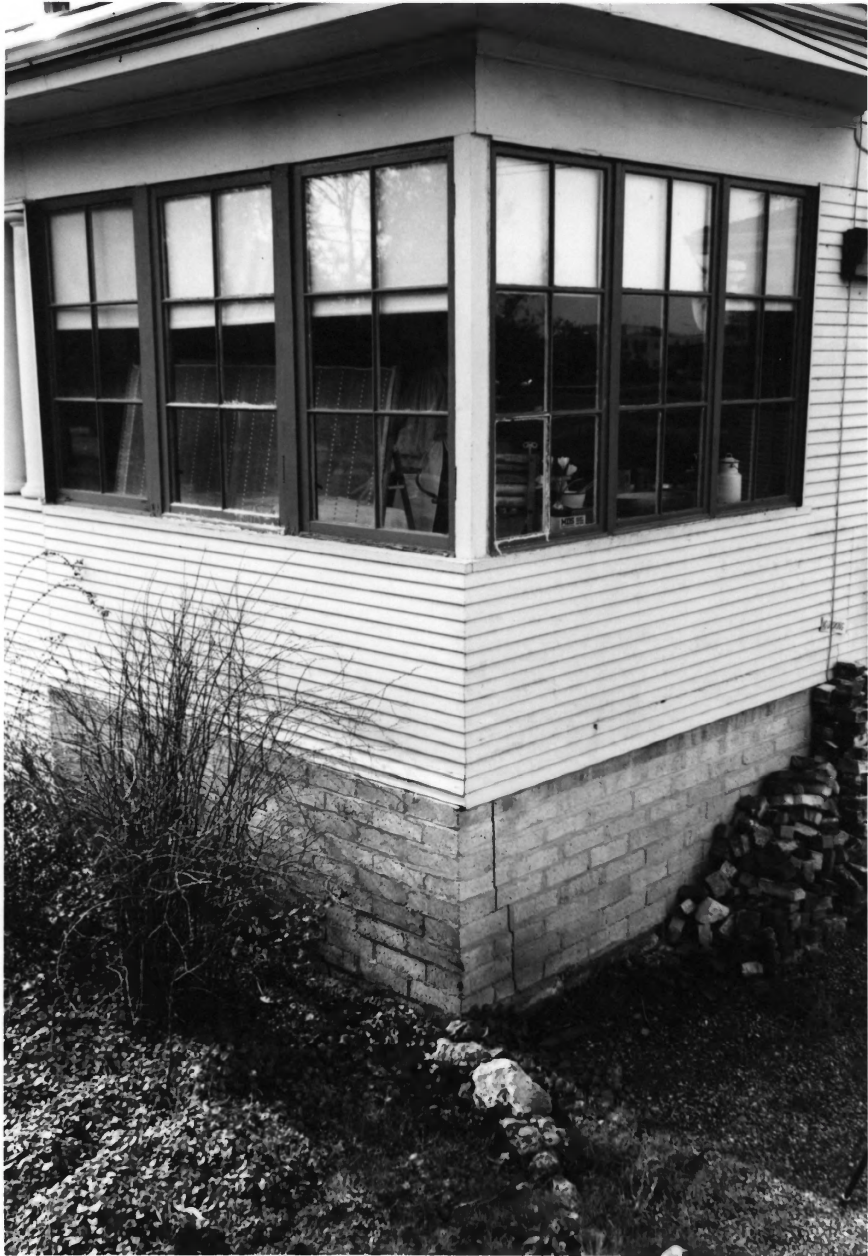
Creek, Contra Costa County, CA

Royce A. Bryant, Feb. 1984

Shadelands Ranch Historical Museum

Front door handle

Fig. 11 of ~~11~~ 24



Shadelands Ranch house

2660 Ygnacio Valley Rd., Walnut
Creek, Contra Costa County, CA

Royce A. Bryant, Feb. 1984

Shadelands Ranch Historical Museum

Northeast elevation, looking south-

Fig. 12 of ~~26~~ 24

west



Shadelands Ranch house

2660 Ygnacio Valley Rd., Walnut

Creek, Contra Costa County, CA

Royce A. Bryant, Feb. 1984

Shadelands Ranch Historical Museum

Cellar access, North elevation

Fig. 13 of ~~23~~ 24



Shadelands Ranch house

2660 Ygnacio Valley Rd., Walnut
Creek, Contra Costa County, CA

Royce A. Bryant, Feb. 1984

Shadelands Ranch Historical Museum

West elevation, looking East

Fig. 14 of ~~24~~ 24



Shadelands Ranch house

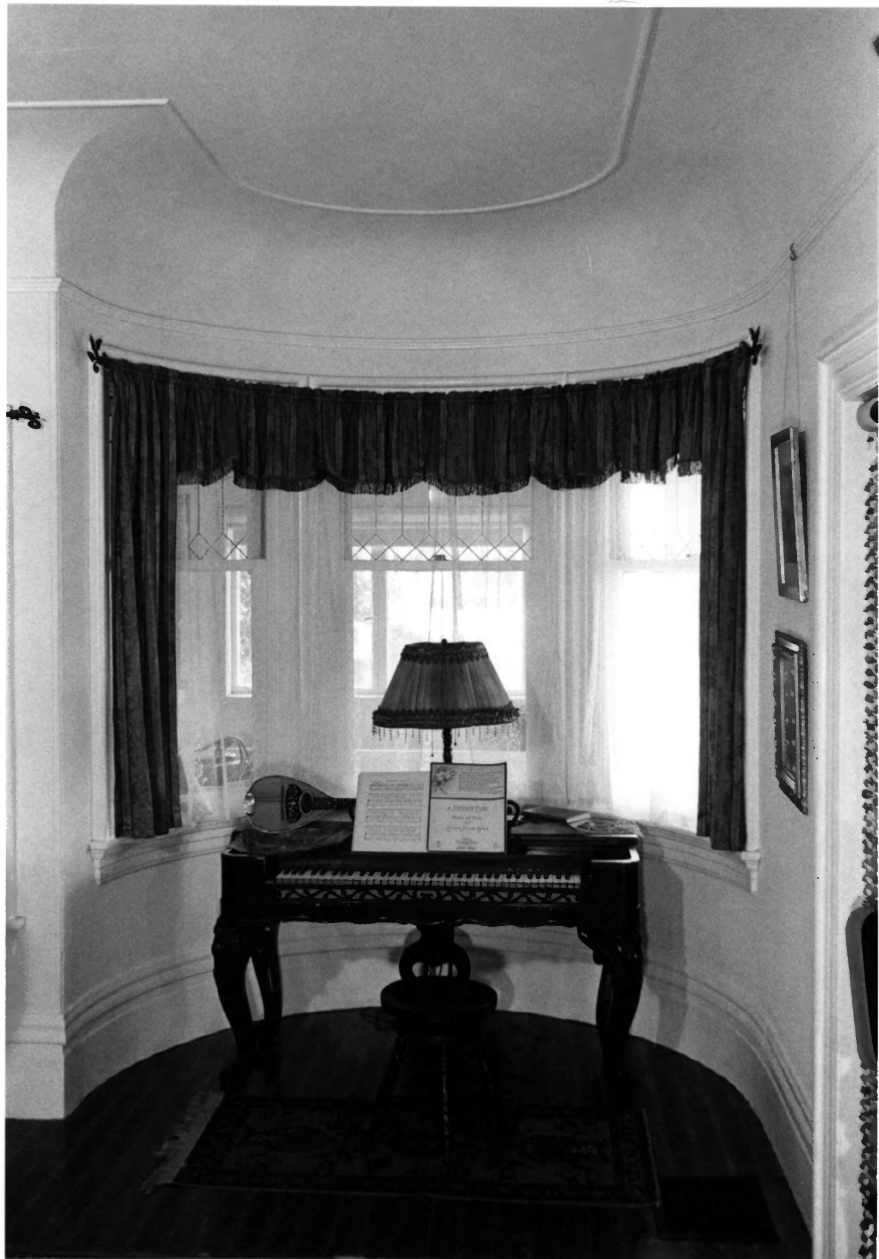
2660 Ygnacio Valley Rd., Walnut
Creek, Contra Costa County, CA

Royce A. Bryant, Feb. 1984

Shadelands Ranch Historical Museum

Front door interior

Fig. 15 of ~~26~~ 24



Shadelands Ranch house

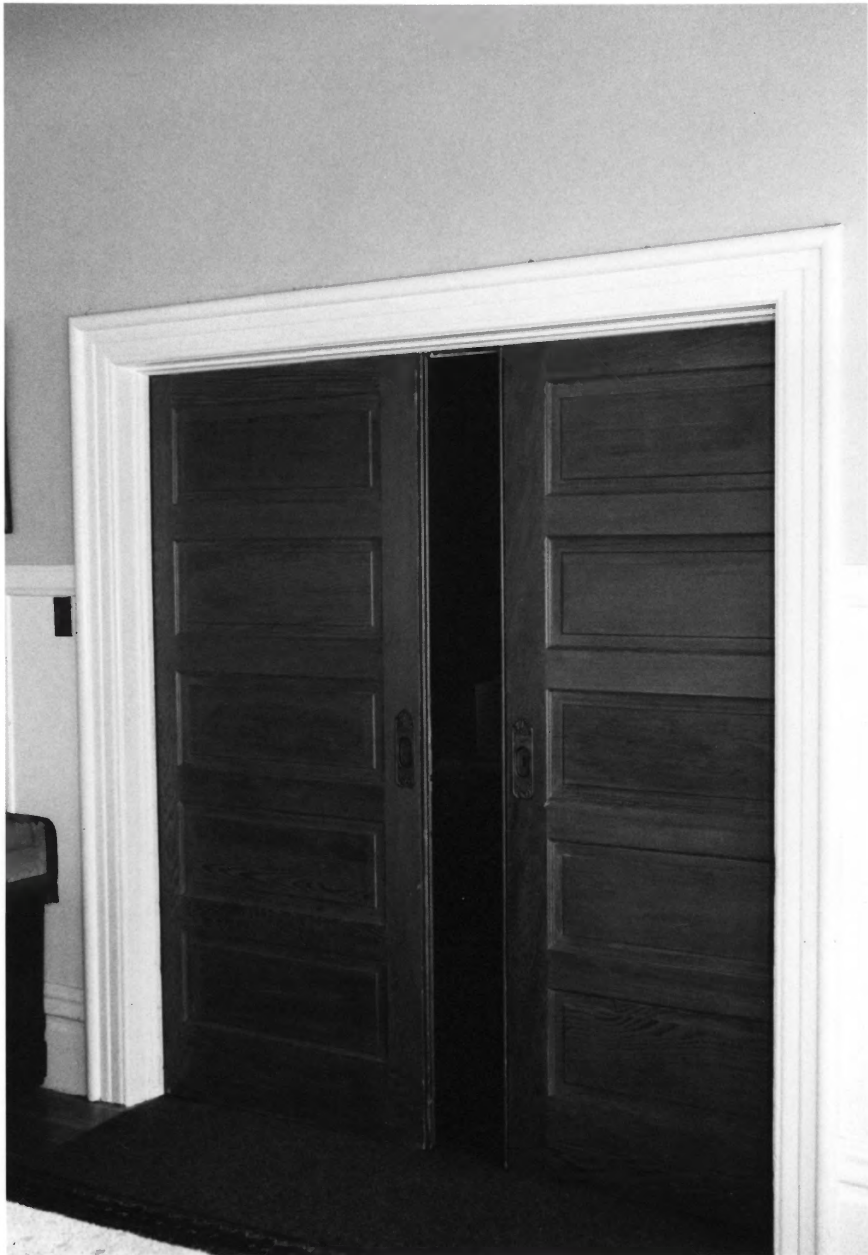
2660 Ygnacio Valley Rd., Walnut
Creek, Contra Costa County, CA

Royce A. Bryant, Feb. 1984

Shadelands Ranch Historical Museum

Curved window bay, living room

Fig. 16 of ~~26~~ 24



Shadelands Ranch house

2660 Ygnacio Valley Rd., Walnut
Creek, Contra Costa County, CA

Royce A. Bryant, Feb. 1984

Shadelands Ranch Historical Museum

Sliding pocket doors, Dining room

Fig. 17 of ~~26~~ 24



Shadelands Ranch house

2660 Ygnacio Valley Rd., Walnut

Creek, Contra Costa County, CA

Royce A. Bryant, Feb. 1984

Shadelands Ranch Historical Museum

Clinker brick fireplace, dining room

Fig. 18 of ~~26~~ 24



Shadelands Ranch house

2660 Ygnacio Valley Rd., Walnut

Creek, Contra Costa County, CA

Royce A. Bryant, Feb. 1984

Shadelands Ranch Historical Museum

Gas-electric chandelier, dining room

Fig. 19 of ~~26~~24



Shadelands Ranch house

2660 Ygnacio Valley Rd., Walnut
Creek, Contra Costa County, CA

Royce A. Bryant, Feb. 1984

Shadelands Ranch Historical Museum

Built-in cupboard, dining room

Fig. 20 of ~~26~~ 24



Shadelands Ranch house

2660 Ygnacio Valley Rd., Walnut

Creek, Contra Costa County, CA

Royce A. Bryant, Feb. 1984

Shadelands Ranch Historical Museum

Staircase to second floor

Fig. 21 of ~~26~~ 24



Shadelands Ranch house

2660 Ygnacio Valley Rd., Walnut

Creek, Contra Costa County, CA

Royce A. Bryant, Feb. 1984

Shadelands Ranch Historical Museum

Window seat on second landing

Fig. 22 of ~~26~~ 24



Shadelands Ranch house

2660 Ygnacio Valley Rd., Walnut

Creek, Contra Costa County, CA

Royce A. Bryant, Feb. 1984

Shadelands Ranch Historical Museum

Toilet, bathroom

Fig. 23 of ~~23~~ 24



Shadelands Ranch house

2660 Ygnacio Valley Rd., Walnut
Creek, Contra Costa County, CA

Royce A. Bryant, Feb. 1984

Shadelands Ranch Historical Museum

Gas-electric chandelier, east bdrm.

Fig. 24 of ~~24~~ 24