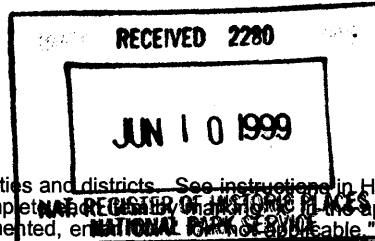


United States Department of the Interior
National Park Service

NATIONAL REGISTER OF HISTORIC PLACES
REGISTRATION FORM



802

This form is for use in nominating or requesting determinations for individual properties and districts. See instructions in How to Complete the National Register of Historic Places Registration Form (National Register Bulletin 16A). Complete each item in the appropriate box or by entering the information requested. If any item does not apply to the property being documented, enter "NATIONAL PARK SERVICE" For functions, architectural classification, materials, and areas of significance, enter only categories and subcategories from the instructions. Place additional entries and narrative items on continuation sheets (NPS Form 10-900a). Use a typewriter, word processor, or computer, to complete all items.

1. Name of Property

historic name Mount Olive African Methodist Episcopal Church

other names/site number Hope Henry AME Church/PI9634

2. Location

street & number 600 Jones Street N/A not for publication

city or town Clearwater N/A vicinity

state FLORIDA code FL county Pinellas code 103 zip code 33755

3. State/Federal Agency Certification

As the designated authority under the National Historic Preservation Act, as amended, I hereby certify that this nomination request for determination of eligibility meets the documentation standards for registering properties in the National Register of Historic Places and meets the procedural and professional requirements set forth in 36 CFR Part 60. In my opinion, the property meets does not meet the National Register criteria. I recommend that this property be considered significant nationally statewide locally. (See continuation sheet for additional comments.)

[Signature] Date 5/26/99
Signature of certifying official/Title Date

Florida State Historic Preservation Officer, Division of Historical Resources
State or Federal agency and bureau

In my opinion, the property meets does not meet the National Register criteria. (See continuation sheet for additional comments.)

Signature of certifying official/Title Date

State or Federal agency and bureau

4. National Park Service Certification

I hereby certify that the property is:

- entered in the National Register See continuation sheet
- determined eligible for the National Register See continuation sheet.
- determined not eligible for the National Register See continuation sheet.
- removed from the National Register.
- other, (explain) _____

[Signature] Signature of the Keeper Date of Action 2/13/00

5. Classification

Ownership of Property

(Check as many boxes as apply)

- private
- public-local
- public-State
- public-Federal

Category of Property

(Check only one box)

- buildings
- district
- site
- structure
- object

Number of Resources within Property

(Do not include any previously listed resources in the count)

Contributing	Noncontributing	
1	0	buildings
0	0	sites
0	0	structures
0	0	objects
1	0	total

Name of related multiple property listings

(Enter "N/A" if property is not part of a multiple property listing.)

N/A

Number of contributing resources previously listed in the National Register

0

6. Function or Use

Historic Functions

(Enter categories from instructions)

RELIGION: religious facility

Current Functions

(Enter categories from instructions)

RELIGION: religious facility

7. Description

Architectural Classification

(Enter categories from instructions)

OTHER: masonry vernacular

Materials

(Enter categories from instructions)

foundation STUCCO

walls STUCCO

roof ASPHALT SHINGLES

other STAINED GLASS

Narrative Description

(Describe the historic and current condition of the property on one or more continuation sheets.)

8. Statement of Significance

Applicable National Register Criteria

(Mark "x" in one or more boxes for the criteria qualifying the property for National Register listing.)

- Criteria A, B, C, D with checkboxes and descriptions.

Criteria Considerations

(Mark "x" in all the boxes that apply.)

Property is:

- Criteria A through G with checkboxes and descriptions.

Areas of Significance

(Enter categories from instructions)

ARCHITECTURE

ETHNIC HERITAGE: Black

Period of Significance

1913 - 1949

Significant Dates

1913

1914

Significant Person

N/A

Cultural Affiliation

N/A

Architect/Builder

UNKNOWN

Narrative Statement of Significance

(Explain the significance of the property on one or more continuation sheets.)

9. Major Bibliographical References

Bibliography

Cite the books, articles, and other sources used in preparing this form on one or more continuation sheets.)

Previous documentation on file (NPS):

- Documentation checkboxes: preliminary determination, previously listed, designated landmark, recorded by survey, recorded by engineering record.

Primary location of additional data:

- Location checkboxes: State Historic Preservation Office, Other State Agency, Federal agency, Local government, University, Other.

Name of Repository

#

10. Geographical Data

Acreege of Property less than one acre

UTM References

(Place additional references on a continuation sheet.)

1	1	7	3	2	3	1	2	0	3	0	9	4	9	0	0
	Zone		Easting					Northing							
2															

3															
	Zone		Easting					Northing							
4															

See continuation sheet

Verbal Boundary Description

(Describe the boundaries of the property on a continuation sheet.)

Boundary Justification

(Explain why the boundaries were selected on a continuation sheet.)

11. Form Prepared By

name/title Helen L. Bowens, Consultant; Gary V. Goodwin, Historic Preservation Planner

organization Bureau of Historic Preservation date January, 2000

street & number R.A. Gray Building, 500 S. Bronough Street telephone (850) 487-2333

city or town Tallahassee state Florida zip code 32399-0250

Additional Documentation

Submit the following items with the completed form:

Continuation Sheets

Maps

- A **USGS map** (7.5 or 15 minute series) indicating the property's location.
- A **Sketch map** for historic districts and properties having large acreage or numerous resources.

Photographs

Representative **black and white photographs** of the property.

Additional items

(check with the SHPO or FPO for any additional items)

Property Owner

(Complete this item at the request of SHPO or FPO.)

name Eleventh Episcopal District of the African Methodist Episcopal Church

street & number 101 East Union Street, Suite 301 telephone (904) 355-8262

city or town Jacksonville state Florida zip code 32202

Paperwork Reduction Act Statement: This information is being collected for applications to the National Register of Historic Places to nominate properties for listing or determine eligibility for listing, to list properties, and amend listings. Response to this request is required to obtain a benefit in accordance with the National Historic Preservation Act, as amended (16 U.S.C. 470 et seq.).

Estimated Burden Statement: Public reporting burden for this form is estimated to average 18.1 hours per response including time for reviewing instructions, gathering and maintaining data, and completing and reviewing the form. Direct comments regarding this burden estimate or any aspect of this form to the Chief, Administrative Services Division, National Park Service, P.O. Box 37127, Washington, DC 20013-7127; and the Office of Management and Budget, Paperwork Reductions Projects (1024-0018), Washington, DC 20503.

**United States Department of the Interior
National Park Service**

**NATIONAL REGISTER OF HISTORIC PLACES
CONTINUATION SHEET**

Section number 7 Page 1

MT. OLIVE A. M. E. CHURCH
Clearwater, Pinellas County, Florida

SUMMARY

The Mt. Olive African Methodist Episcopal Church, located at 600 Jones Street, in the historic African American neighborhood of Clearwater, Florida, is a rectangular; gable roofed building with a corner bell tower built in 1913. It has a stucco exterior. The Masonry Vernacular style building has some elements of Gothic Revival. It embodies the characteristic features of façade design, fenestration, and architectural detail that define the style, yet it is distinguished by the absence of steep cross gables with decorated vergeboards. However, the building does have multiple parapets, a castellated tower, some original stained glass windows and the sanctuary has a cove wooden ceiling. The church is well maintained with few modern alterations, however, a large masonry one story fellowship hall was added to the property in 1994-95. The fellowship hall is connected to the church by an enclosed corridor.

SETTING

The Mt. Olive AME Church is located north of the downtown commercial district of Clearwater, Florida, adjacent to the Seaboard Coastline tracks (now the Pinellas Trail). It is in a mostly residential neighborhood of small, older, single family frame houses although most of the old buildings have been demolished. Growth and expansion of the city has transformed the surrounding area into a stable, urban residential and commercial neighborhood.

The church occupies a large corner lot that fronts south onto Jones Street and east onto Railroad Avenue, which parallels the former SCL tracks. The church is set back about twenty (20) feet from Jones and about six (6) feet from Railroad. The property is landscaped with grass lawns, live oaks and sable palms. Historically, to the north of the church fronting on Railroad Avenue, there was a one story rectory and behind it a two story frame meeting hall. Both buildings, however, were demolished in 1993. The church has purchased surrounding property that includes the fellowship hall, a second building known as “the print shop” and six other parcels of land which are used for parking.

**United States Department of the Interior
National Park Service**

**NATIONAL REGISTER OF HISTORIC PLACES
CONTINUATION SHEET**

Section number 7 Page 2

**MT. OLIVE A. M. E. CHURCH
Clearwater, Pinellas County, Florida**

PHYSICAL DESCRIPTION

Exterior

The church is rectangular in plan, about sixty-five (65) feet long north to south and thirty-five (35) feet wide east to west. The foundation is a continuous concrete block wall with a concrete footing. The floor is raised thirty (30) inches above grade. It is of frame sill and joists covered with three (3) inch strip heart pine flooring. The exterior walls of the church are concrete block finished in textured concrete stucco (Photo #1). All exterior walls have stuccoed concrete buttresses placed about ten (10) feet apart that rise about fifteen (15) feet above grade. The exterior walls rise above the roof plane to form a low parapet that is capped by a simple stringcourse. The east and west elevations have stepped parapets concealing the gable ends and on the south (front) and north elevations the parapets have a central pediment. The southeast corner of the church has a tower, about ten- (10) foot square, which rises about ten (10) feet above the roof ridge (Photo #2). It has a flat roof surrounded by parapets.

The tower has rectangular windows covered in wood louvers (now covered by sheet metal) and contains a single brass bell. The bell tower serves as the entrance to the church, and doors with concrete steps are located on the south side. Similar steps on the east have been removed.

Windows throughout the church are symmetrically placed and consist of paired wood double hung sashes (Photo #3). Windows are either three feet by seven feet (3'x7'), or eighteen inches by seven feet (18"x7'). A set of triple windows is placed high above the chancel on the west facade. Most of the windows are original and contain leaded stained glass panels of geometric design in colors of green, lavender and gold. Some windows have dedication panels in the lower sash inscribed with donors' names and the date 1914. A series of three (3) white marble plaques, each about one foot by three feet (1'x3'), are mounted on the north and east foundation walls. Their inscriptions commemorate building activity of the church from 1914 until 1926.

United States Department of the Interior
National Park Service

**NATIONAL REGISTER OF HISTORIC PLACES
CONTINUATION SHEET**

Section number 7 Page 3

MT. OLIVE A. M. E. CHURCH
Clearwater, Pinellas County, Florida

A concrete block fellowship hall, built in 1994-95, forms the new west wing of the complex (Photo #4). An enclosed corridor connects the fellowship hall with the historic church, leaving the historic church intact.

Interior

The interior of the church is a large hall with a cove wooden ceiling (Photo #5). The original wood floor is now carpeted. Walls are smooth plaster above a thirty-six inch (36") high beaded board wainscoting. The pews are of stained unvarnished wood. At the west end of the hall is a recessed chancel area that is framed by a segmental arch. On both sides of the chancel are small rooms, each with a door to the seating area, chancel and exterior. The chancel is separated from the seating area by a semi-circular rail of varnished pine. The rail, once open, was enclosed c.1940s to provide privacy for women kneeling there. Behind the rail is a large, ornate pulpit of Victorian design, made of carved varnished wood.

Fellowship Hall

The 1994-95 Fellowship Hall Annex connects with the historic church on the west elevation. The transition between the historic and non-historic sections of the building is distinct; an enclosed corridor brings together the two sections. However, interior door treatments that separate the sections of the building remain in place (Photo #8).

The rectangular single-story masonry vernacular addition has a gable roof and stucco exterior. The south elevation displays a stepped parapet and three multi-light, glass block windows with awnings (Photo #13). Door openings include a shed roof covered entrance to the north and a doorway to the south with double metal doors on the east and west elevations (Photo #16). Fenestration consists of three fixed glass windows with aluminum frames and molded sills on the east and five windows on the west elevations (Photo #17).

**United States Department of the Interior
National Park Service**

**NATIONAL REGISTER OF HISTORIC PLACES
CONTINUATION SHEET**

Section number 7 Page 4

**MT. OLIVE A. M. E. CHURCH
Clearwater, Pinellas County, Florida**

The interior includes an open seating/meeting area, with a carpeted and tile floor (Photo #18); three classrooms, a kitchen and the Pastor's study at the south end of the hall (Photo #20).

ALTERATIONS

A central air conditioning and heating system was installed in the early 1970s. Other alterations to the property include the 1993 demolition of the original rectory and meeting hall buildings located north of the church to make way for a small parking area. Over twenty years ago someone broke the glass in the rear of the sanctuary. The trustees at that time replaced it with plastic instead of stained glass. The rationale behind this decision was that this window faced what was then known as Railroad Avenue, which was a public thoroughfare, and the possibility existed that the window could be broken again at any time. A second decision was to close in the chancel rail. Because of the new fashion trends of women wearing shorter skirts, it was agreed that for the sake of modesty the rail should be enclosed. Otherwise, Mt. Olive A. M. E. Church has not been changed significantly since 1913.

**United States Department of the Interior
National Park Service**

**NATIONAL REGISTER OF HISTORIC PLACES
CONTINUATION SHEET**

Section number 8 Page 1

**MT. OLIVE A. M. E. CHURCH
Clearwater, Pinellas County, Florida**

SUMMARY

The Mt. Olive African Methodist Episcopal Church is locally significant under Criterion A in the areas of Social History and Ethnic Heritage: Black for its association with the development of the social culture of the African American community in the city of Clearwater, Florida. Furthermore, the building is significant under Criterion C due to the Gothic Revival characteristics it displays. The congregation of Mt. Olive African Methodist Episcopal Church, formerly known as Hope Henry A.M.E. Church, was organized in 1894. It sits on the same site as the original church which was built in 1896. The present church building constructed in 1913 was preceded by two earlier buildings constructed in 1896 and 1906. Both structures were destroyed by severe storms. The stucco exterior wall finish, with buttresses, shaped and stepped parapet, and crenellated tower, are Gothic Revival design features.

HISTORIC CONTEXT

The Pinellas peninsula has been the home of a mix of people over the centuries: the Tocobaga Indians, the Spanish explorers, the early pioneers, real estate speculators of the 1920s, tourists, and since World War II, a tremendous influx of retirees and working people. Initially slow to develop due to its inaccessibility, Pinellas grew rapidly following the arrival of the Orange Belt Railroad in 1887. Clear Water Harbor was the first point on the Pinellas peninsula to become a community. A post office was established there in 1859 and the community was named Clearwater. In 1912, Pinellas became a separate county apart from Hillsborough County, and Clearwater was named the county seat.

The first African Methodist Episcopal Church was organized in Florida on June 10, 1865 by the Rev. W. G. Steward. The Rev. Thomas Warren Long had been assigned to go throughout the state and organize congregations. Long was born near Jacksonville, Florida, in 1832. He was the slave of John Roberts, whose plantation comprised the territory west of Davis Street in Jacksonville, beyond Edward Waters College.

**United States Department of the Interior
National Park Service**

**NATIONAL REGISTER OF HISTORIC PLACES
CONTINUATION SHEET**

Section number 8 Page 2

**MT. OLIVE A. M. E. CHURCH
Clearwater, Pinellas County, Florida**

His father, James Long, was a native African who was captured at the age of fourteen and then sold to Spanish slave traders. He was bought by a slave owner in Matanzas Province, where he lived until grown. Long entered the fishing business and bought his freedom. He fished off the coast of Florida, where he met his wife. When the Civil War broke out, T.W. Long, the son of James Long, ran away and joined the Union forces. He went back later and stole his wife and two daughters. At the end of the war T.W. returned to Florida and joined the Florida Conference of the A.M.E. Church. In 1870 he was appointed Presiding Elder of the Jacksonville District, which included all territory from Monticello to Jacksonville and south to Tampa. In 1870 T. W. Long organized St. Paul A.M.E. Church in Tampa, the first A.M.E. church in Hillsborough County, of which Clearwater was a part until 1923.

The historically African American Greenwood section of Clearwater, which includes Mt. Olive A. M. E. Church, is bounded by Greenwood, Palmetto, and Myrtle Avenues and Betty Lane. Close to downtown Clearwater, the area has become increasingly commercial and only a few residences remain, mostly near Mt. Olive.

HISTORIC SIGNIFICANCE

Mt. Olive is a white masonry building on the corner adjacent to Pinellas Trail. The name was changed from Hope Henry to Mt. Olive in 1913 when the current building was constructed. The original sanctuary was destroyed by a severe storm in 1906. The present 1913 sanctuary was built of concrete blocks actually made by W.M. Buchanan, a member of the church, and the building was raised by the men of the church. In the early 1900's Mt. Olive was one of only two black churches in Clearwater. Along with Pinellas Institute, the first school for black students, the church would manifest the cultural and social development of the community.

**United States Department of the Interior
National Park Service**

**NATIONAL REGISTER OF HISTORIC PLACES
CONTINUATION SHEET**

Section number 8 Page 3

**MT. OLIVE A. M. E. CHURCH
Clearwater, Pinellas County, Florida**

The role of the church in the black community has not changed over the years. It has been a source of strength to the residents of the area through wars and conflicts of all types. The church has always served as a support system in the black community. During times of war (World War I, World War II, Korean War and the Viet Nam War), when young men of the community left to serve their country, the church stood as a place of support for their families. When a son, a husband, or a brother was lost in various conflicts, it was the members of the church who would stand by the families and do whatever was necessary to assist in helping the family cope with their loss. It has been said by one member "that when her son went off to war it was the church that helped her through the ordeal."

In the black community the church also serves as a place to meet others and fellowship with old and new neighbors, to watch the children of the community grow into productive adults and start families of their own. According to James C. Rembert, a member for seventy-six years, "...we had young people's meetings with a group called The Allen Christian and Endeavor League. In this group we fraternized as well as studied scripture. My father met my mother at one of these group meetings."

Mt. Olive sits between Garden Avenue and Myrtle Avenue. In the early years, Garden Avenue was the most easterly paved street in Clearwater. The business section was on the Bluff with hotels, coffee shops, shoe shine parlors, etc. In addition to the residents of the community, porters, maids, and baby sitters who came south to vacation with wealthy families from the north, attended Mt. Olive. The black servants roomed in the community with local families who took in borders. Many local people in town also took in laundry. They washed, ironed, and starched clothing for white people in town as well as the wealthy tourists. Mt. Olive was supported by tithes and offerings of its members. Even children would give sometimes as little as a nickel a Sunday. To raise additional dollars, the church would hold box suppers. Women of the church would prepare meals which would be auctioned off to the highest bidders. The first white members of Mt. Olive were Canadians who vacationed here in the 1930s.

**United States Department of the Interior
National Park Service**

**NATIONAL REGISTER OF HISTORIC PLACES
CONTINUATION SHEET**

Section number 8 Page 4

**MT. OLIVE A. M. E. CHURCH
Clearwater, Pinellas County, Florida**

Longtime member of the church, Helen Davis Hargray recalls growing-up near the church at 612 Jones Alley, next door to the parsonage. Her mother and father became members in 1926, when Hope Henry A. M. E. had been renamed Mount Olive A. M. E. Church. Her father, often accompanied by Mrs. Hargray and her brothers, would clean the church each week. She also remembered he would toll the church bell on Sunday morning and when someone had passed away.

Mary C. Evans describes the memory of some of the ladies in the church making Communion Bread in the 1940s using a mixture of flour and water pressed between two very hot smoothing irons. Communion glasses were washed thoroughly and the cotton altar covers were sometimes boiled in a wash pot outdoors, and ironed by hand without a wrinkle.

ARCHITECTURAL CONTEXT

The Gothic Revival was the first of the Victorian-era styles to challenge the symmetry and ordered reason of Classicism. The style was a direct reflection of the Picturesque, an aesthetic point of view celebrating the variety, texture, and irregularity inherent in nature. Popular from 1835 to 1860, the Gothic Revival Style was used for churches, civic buildings and houses—from small wooden cottages to stone houses. Attributes with gothic motifs were all used to give a picturesque, medieval appearance. Gabled roofs with crenellated parapets and suggestions of buttresses are common on Gothic Revival churches and public buildings.

ARCHITECTURAL SIGNIFICANCE

Mt. Olive A. M. E. Church displays characteristics of Gothic Revival style architecture. The exterior walls of the church are concrete block finished in a textured concrete stucco. The walls have stuccoed buttresses that rise fifteen feet above grade. The gabled roof has shaped parapets with central pediments on the

**United States Department of the Interior
National Park Service**

**NATIONAL REGISTER OF HISTORIC PLACES
CONTINUATION SHEET**

Section number 8 Page 5

**MT. OLIVE A. M. E. CHURCH
Clearwater, Pinellas County, Florida**

north and south (main) elevations. The east and west elevations have stepped parapets concealing the gable ends. The southeast corner of the church has a squat, crenellated tower that rises ten feet above the roof ridge. It has a flat roof surrounded by parapets. Fenestration includes original leaded stained glass and a few Plexiglas panels. The building retains significant design elements which convey the qualities of Gothic Revival style architecture.

**United States Department of the Interior
National Park Service**

**NATIONAL REGISTER OF HISTORIC PLACES
CONTINUATION SHEET**

Section number 9 Page 1

**MT. OLIVE A. M. E. CHURCH
Clearwater, Pinellas County, Florida**

BIBLIOGRAPHY

Long, Charles Sumner. History of the A.M.E. Church in Florida. Philadelphia: A.M.E. Book Concern, Printers, 1939.

Sanborn Fire Insurance Map of Clearwater, Florida New York: Sanborn Map and Publishing Company, 1923.

St. Petersburg Times, Clearwater Edition St. Petersburg, Florida. April 8, 1998.

Bay 9 News Video Interview Time Warner Communications May 10, 1998.

Mt. Olive A.M.E. Church Historical Record, Clearwater, Florida

Oral Interviews with Members Mt. Olive AME Church Mt. Olive AME Church, Clearwater, Fl.

**United States Department of the Interior
National Park Service**

**NATIONAL REGISTER OF HISTORIC PLACES
CONTINUATION SHEET**

Section number 10 Page 1

**MT. OLIVE A. M. E. CHURCH
Clearwater, Pinellas County, Florida**

VERBAL BOUNDARY DESCRIPTION

Lots three (3) and four (4) of Block four (4) of Jones Subdivision of or to Nicholson's addition to Clearwater Harbor according to the corrected plat of same as recorded in Plat Book One (1), Page thirteen (13) Records of Hillsborough County, Florida. Said Jones Subdivision to Nicholson's addition to Clearwater Harbor being subdivision and being in Section nine (9), Township twenty-nine (29) South, Range fifteen (15) East.

BOUNDARY JUSTIFICATION

The parcel includes the property historically associated with Mount Olive African Methodist Episcopal Church as represented in the site plan.

**United States Department of the Interior
National Park Service**

**NATIONAL REGISTER OF HISTORIC PLACES
CONTINUATION SHEET**

Section number PHOTOS Page 1

**MT. OLIVE A. M. E. CHURCH
Clearwater, Pinellas County, Florida**

List of Photographs

1. Mt. Olive AME Church, 600 Jones Street
2. Clearwater (Pinellas County), Florida
3. Steve Rusnell
4. April 5, 1998
5. Mt. Olive AME Church
6. Church-South elevation: Camera facing Northeast
7. Photo No. 1 of 24

ITEMS 1-5 ARE THE SAME FOR THE FOLLOWING PHOTOGRAPHS

6. Church-East elevation: Camera facing Northwest
7. Photo No. 2 of 24

6. Church-North elevation: Camera facing Southwest
7. Photo No. 3 of 24

6. Church/Annex: Camera facing Southwest
7. Photo No. 4 of 24

6. Interior-sanctuary: Camera facing West
7. Photo No. 5 of 24

1. Mt. Olive AME Church, 600 Jones Street
2. Clearwater (Pinellas County), Florida
3. Helen L. Bowens
4. May 15, 1998
5. Mt. Olive AME Church
6. Camera facing East into sanctuary from corridor /door closed
7. Photo No. 6 of 24

ITEMS 1-5 ARE THE SAME FOR THE FOLLOWING PHOTOGRAPHS

6. Camera facing East into sanctuary from corridor /door open
7. Photo No. 7 of 24

**United States Department of the Interior
National Park Service**

**NATIONAL REGISTER OF HISTORIC PLACES
CONTINUATION SHEET**

Section number PHOTOS Page 2

**MT. OLIVE A. M. E. CHURCH
Clearwater, Pinellas County, Florida**

-
6. Camera facing East into sanctuary from corridor through anteroom
 7. Photo No. 8 of 24

 6. Camera facing South in corridor between sanctuary & fellowship hall.
 7. Photo No. 9 of 24

 6. Camera facing North in corridor; sanctuary right, fellowship hall left
 7. Photo No. 10 of 24

 6. Camera facing West from sanctuary into fellowship hall
 7. Photo No. 11 of 24

 6. Camera facing West from corridor into fellowship hall
 7. Photo No. 12 of 24

 1. Mt. Olive AME Church, 600 Jones Street
 2. Clearwater (Pinellas County), Florida
 3. Gordon Beardslee
 4. December, 1999
 5. Pinellas County Planning Department
 6. Annex-South elevation: Camera facing Northeast
 7. Photo No. 13 of 24

ITEMS 1-5 ARE THE SAME FOR THE FOLLOWING PHOTOGRAPHS

6. Annex-close-up of window/awning; Camera facing North
7. Photo No. 14 of 24

6. Annex-North entrance; Camera facing Southwest
7. Photo No. 15 of 24

6. Annex-North elevation; Camera facing Southwest
7. Photo No. 16 of 24

6. Annex-West elevation; Camera facing Southeast
7. Photo No. 17 of 24

**United States Department of the Interior
National Park Service**

**NATIONAL REGISTER OF HISTORIC PLACES
CONTINUATION SHEET**

Section number PHOTOS Page 3

**MT. OLIVE A. M. E. CHURCH
Clearwater, Pinellas County, Florida**

-
- 6. Annex-meeting area; Camera facing Southeast
 - 7. Photo No. 18 of 24

 - 6. Annex-meeting area; Camera facing Northeast
 - 7. Photo No. 19 of 24

 - 6. Annex-Pastor's Study; Camera facing Northeast
 - 7. Photo No. 20 of 24

 - 6. Annex-kitchen; Camera facing Southeast
 - 7. Photo No. 21 of 24

 - 6. Annex-classroom; Camera facing East
 - 7. Photo No. 22 of 24


 - 6. Annex-classroom; Camera facing West
 - 7. Photo No. 23 of 24


 - 6. Annex-corridor; Camera facing East
 - 7. Photo No. 24 of 24

MOUNT OLIVE A.M.E. CHURCH
Clearwater, Pinellas Co., FL

177'

LEGEND

HISTORIC SECTION 

NON-HISTORIC SECTION 



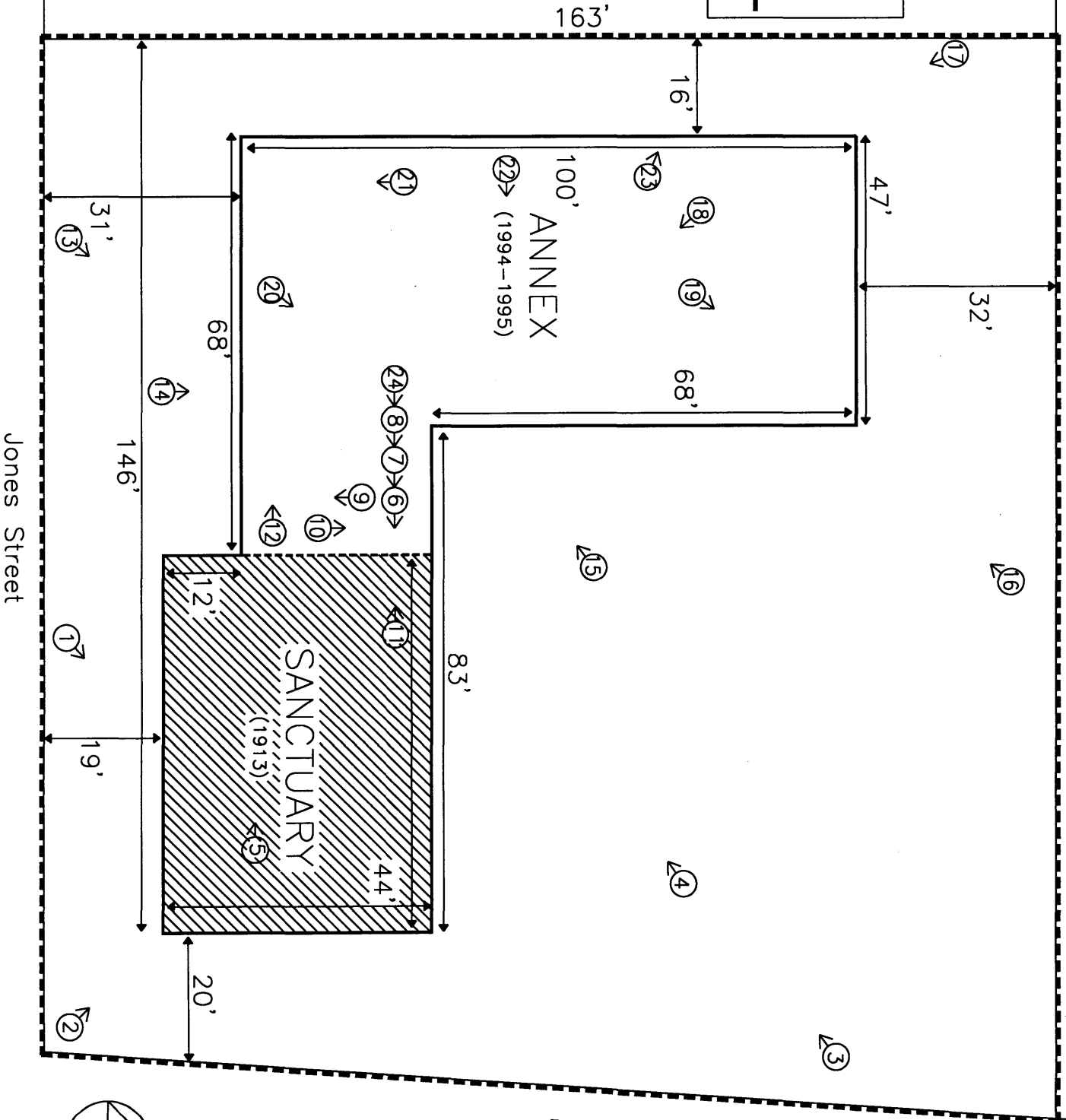
HISTORIC BOUNDARY 

PHOTO NUMBERS 

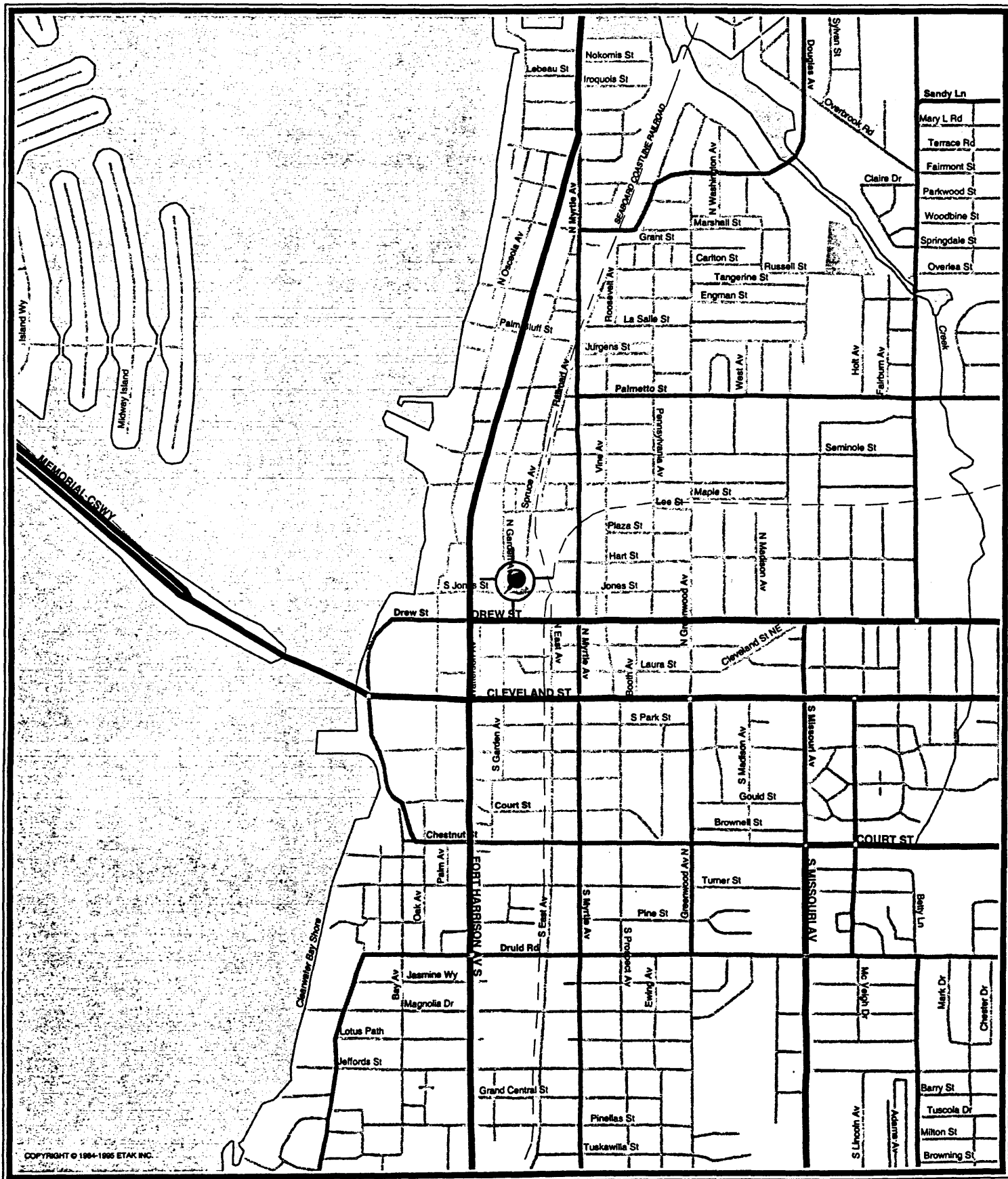


Jones Street

Pinellas Trail

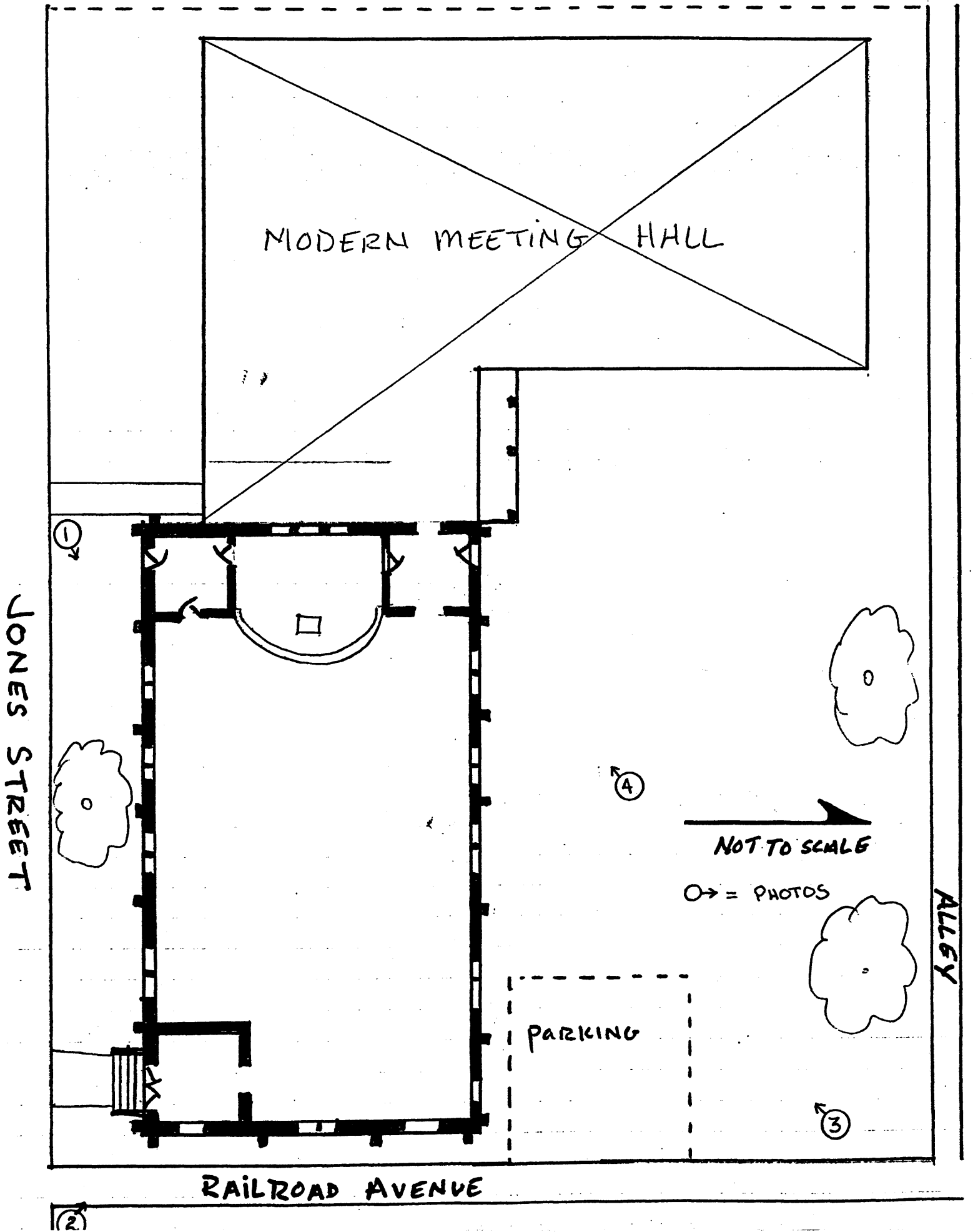


Current Map MT. OLIVE A. M. E. CHURCH Clearwater, Pinellas County, Florida



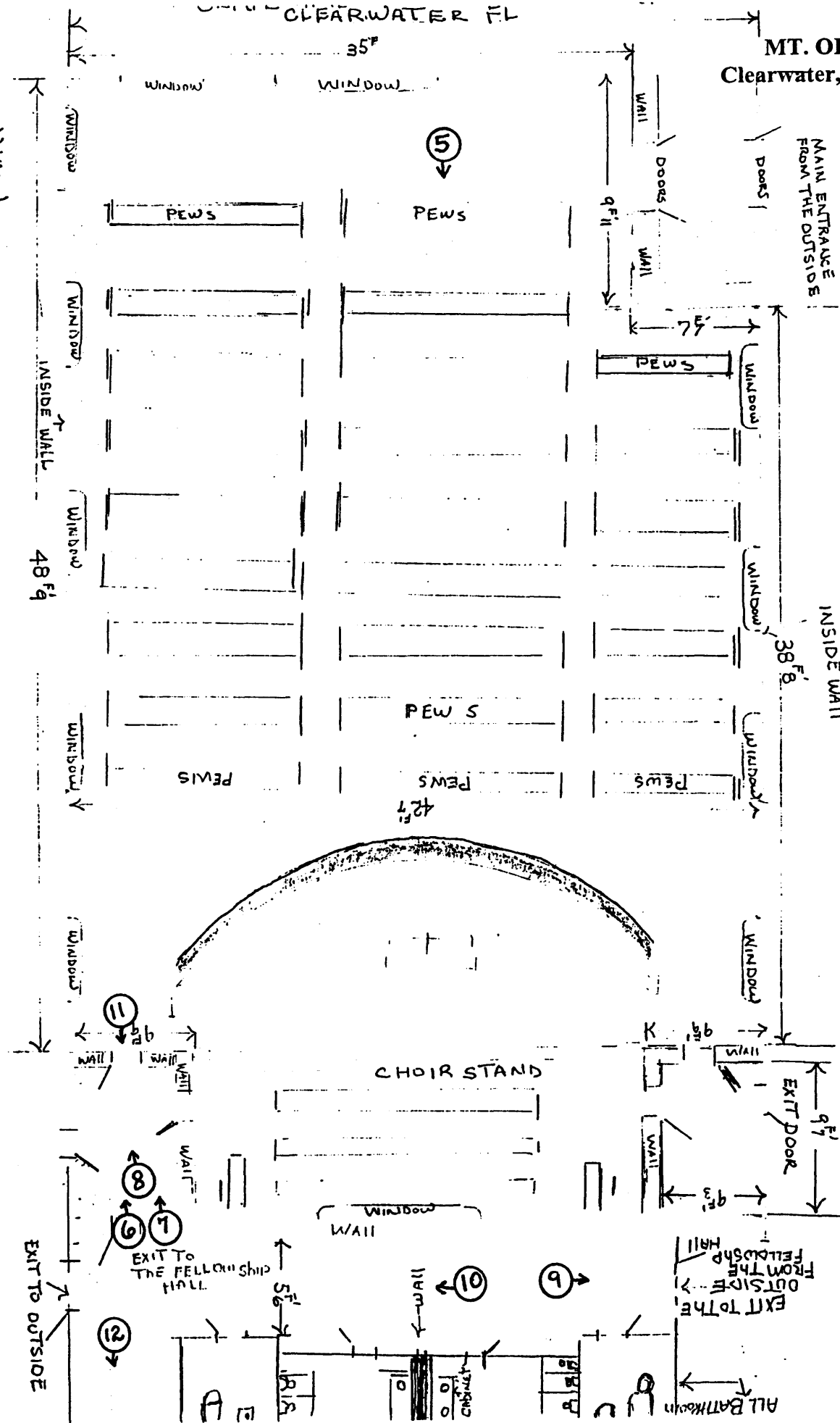
COPYRIGHT © 1994-1995 ETAK INC.

MOUNT OLIVE A.M.E. Church SITE PLAN



MT. OLIVE A. M. E. CHURCH
 Clearwater, Pinellas County, Florida

♂ = PHOTOS



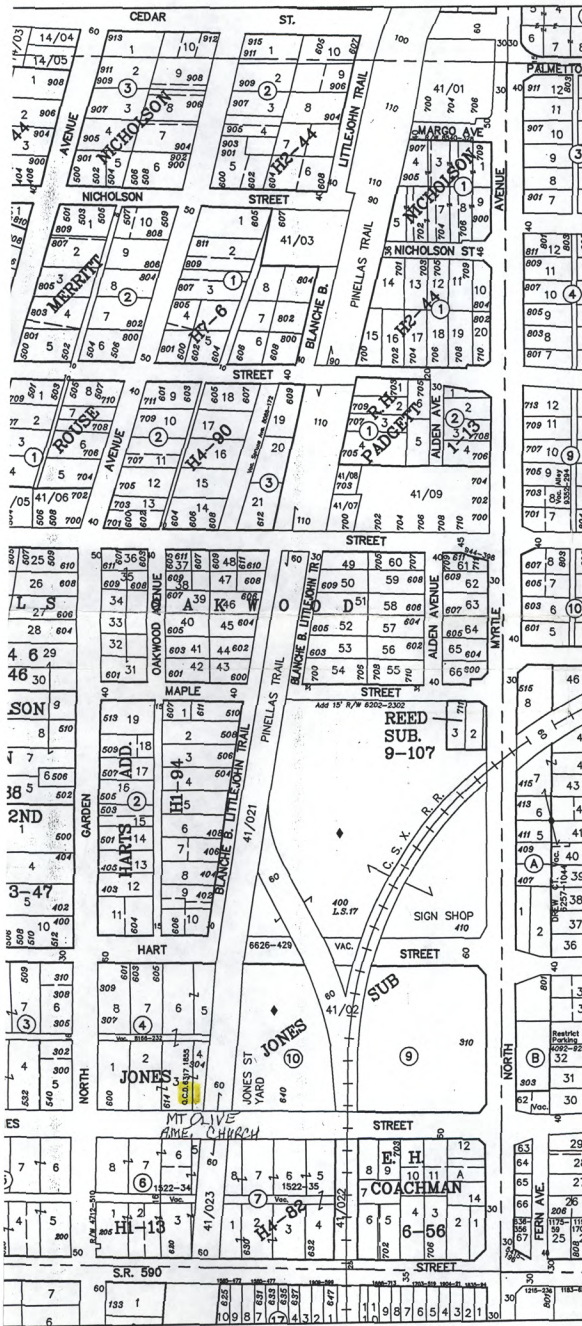
MT. OLIVE A.M.E. CHURCH
Clearwater, Pinellas County, Florida



CITY OF CLEARWATER

AND COUNTY
PINELLAS CO., FLA.

PREPARED BY THE
ENGINEERING DEPARTMENT
ENGINEERING SERVICES
100 S. MYRTLE AVE. PH. 562-4750



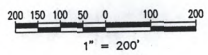
- (F) BLOCK NUMBER
- ▲ AGREEMENT TO ANNEX
- 2412 LOT ADDRESS
- ◆ CITY OWNED PROPERTY

SHADED AREA DENOTES
PROPERTY OUTSIDE
CLEARWATER CITY LIMITS



268A	268B	269A
277A	277B	278A
286A	286B	287A

MATCH SHEET



SE 1/4 OF SECTION
9 - 29 S - 15 E

DATE 10/10/97

200 SCALE HOUSE 277B