



South Hill Historic District  
Fayette County  
Lexington, Kentucky

JUN 13 1978

Richard DeCamp  
Lexington-Fayette County  
Historic Commission  
December 23, 1976

Photo-1                      JAN 16 1978  
East side of South Broadway,  
400 block, view from southwest  
(432 S. Broadway is in foreground)



South Hill Historic District  
Lexington  
Fayette County Kentucky

JUN 13 1978

Richard DeCamp  
Lexington-Fayette County  
Historic Commission  
December 15, 1976

Photo-2

JAN 16 1978

260 and 256 South Limestone  
view from Southwest





South Hill Historic District  
Lexington  
Fayette County Kentucky

JUN 13 1978

Richard DeCamp  
Lexington-Fayette County  
Historic Commission  
December 15, 1976

Photo-3  
South Upper Street  
300 Block  
View from north

JAN 16 1978



South Hill Historic District  
Lexington  
Fayette County Kentucky

Richard DeCamp  
Lexington-Fayette County  
Historic Commission  
December 20, 1976

Photo-4  
South Mill Street  
300 Block  
View from South

JUN 13 1978

JAN 16 1978



caribood  
woodcrafts

South Hill Historic District  
Lexington  
Fayette County Kentucky

JUN 13 1978

Richard DeCamp  
Lexington-Fayette County  
Historic Commission  
December 15 1976

Photo-5  
West High Street  
100 Block  
View from east (Civic Center in  
background on right)

JAN 16 1978



South Hill Historic District  
Lexington  
Fayette County Kentucky

JUN 13 1978

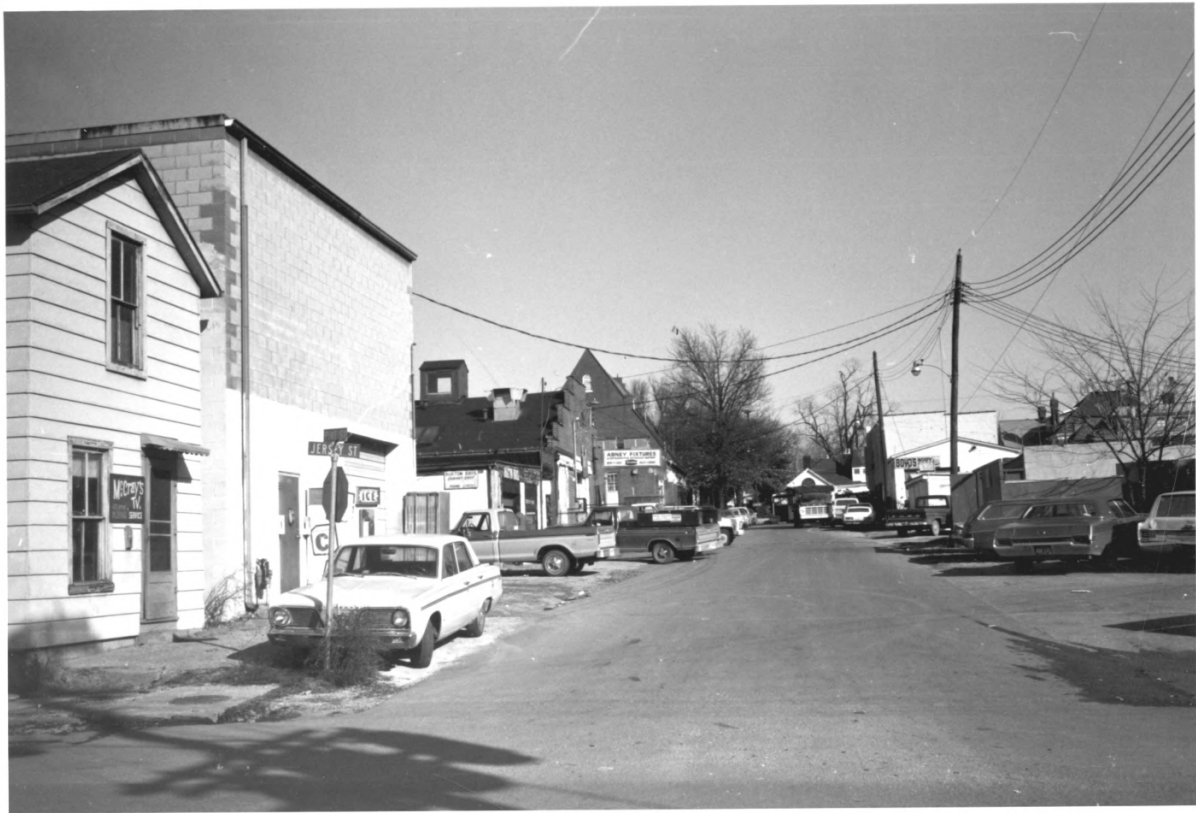
Richard DeCamp  
Lexington-Fayette County  
Historic Commission  
June 15, 1976

Photo-6

JAN 16 1978

227 and 225 Pine Street  
View from southwest





South Hill Historic District  
Lexington  
Fayette County Kentucky

JUN 13 1978

Richard DeCamp  
Lexington-Fayette County  
Historic Commission  
December 15, 1976

Photo-7

JAN 16 1978

Jersey Street

(433 on southwest corner)

View from South



South Hill Historic District  
Lexington  
Fayette County Kentucky

JUN 13 1978

Richard DeCamp  
Lexington-Fayette County  
Historic Commission  
December 15, 1976

Photo-8

JAN 16 1978

West Maxwell Street  
100 Block, view from west (Good  
Samaritan Hospital in background  
on right)



South Hill Historic District  
Lexington  
Fayette County Kentucky

JUN 13 1978

Richard DeCamp  
Lexington-Fayette County  
Historic Commission  
December 15, 1976

Photo-9  
West Maxwell Street  
200 Block  
view from east

JAN 16 1978



South Hill Historic District  
Lexington  
Fayette County Kentucky

JUN 13 1978

Richard DeCamp  
Lexington-Fayette County  
Historic Commission  
December 15, 1976

Photo-10  
South Upper Street  
400 Block  
view from north

JAN 16 1978





South Hill Historic District  
Lexington  
Fayette County Kentucky

JUN 13 1978

Richard DeCamp  
Lexington-Fayette County,  
Historic Commission  
December 15, 1976

Photo-11  
John L. Wilmott house  
view from west

JAN 16 1978



South Hill Historic District  
Lexington  
Fayette County Kentucky

JUN 13 1978

Richard DeCamp  
Lexington-Fayette County  
Historic Commission  
December 15, 1976

Photo-12

JAN 16 1978

South Limestone  
200 Block-view from southwest  
(270 is in foreground)



South Hill Historic District  
Lexington  
Fayette County Kentucky

JUN 13 1978

Richard DeCamp  
Lexington-Fayette County  
Historic Commission  
December 15, 1976

Photo-13  
249 South Limestone and the  
Samuel Oldham house  
view from southeast

JAN 16 1978



South Hill Historic District  
Lexington  
Fayette County Kentucky

JUN 13 1978

Richard DeCamp  
Lexington-Fayette County  
Historic Commission  
December 15, 1976

Photo-14  
277, 273 and 267 south Limestone  
view from southeast

JAN 16 1978





South Hill Historic District  
Lexington  
Fayette County Kentucky

JUN 13 1978

Richard DeCamp  
Lexington-Fayette County  
Historic Commission  
December 20, 1976

Photo-15                      JAN 16 1978  
George Lancaster house  
326 South Broadway  
view from southwest.



South Hill Historic District  
Lexington  
Fayette County Kentucky

JUN 13 1978

Richard DeCamp  
Lexington-Fayette County  
Historic Commission  
December 20, 1976

JAN 16 1978

Photo-16  
Mrs. C. C. Rogers' house  
352 South Broadway  
view from southwest



South Hill Historic District  
Lexington  
Fayette County Kentucky

JUN 13 1978

Richard DeCamp  
Lexington-Fayette County  
Historic Commission  
December 20, 1976

Photo-17  
362-364 South Broadway  
view from west

JAN 16 1978



South Hill Historic District  
Lexington  
Fayette County Kentucky

JUN 13 1978

Richard DeCamp  
Lexington-Fayette County  
Historic Commission  
December 20, 1976

Photo-18  
366 and 370 South Broadway  
view from northwest

JAN 16 1978





South Hill Historic District  
Lexington  
Fayette County Kentucky

JUN 13 1978

Richard DeCamp  
Lexington-Fayette County  
Historic Commission  
December 23, 1976

JAN 16 1978

Photo-19  
388 and 400-402 South Broadway  
view from southwest



South Hill Historic District  
Lexington  
Fayette County Kentucky

JUN 13 1978

Richard DeCamp  
Lexington-Fayette County  
Historic Commission  
December 23, 1976

Photo-20  
South Broadway, view of east  
side of 400 block from northwest  
(420 is in foreground)

JAN 16 1978



South Hill Historic District  
Lexington  
Fayette County Kentucky

JUN 13 1978

Richard DeCamp  
Lexington-Fayette County  
Historic Commission  
December 23, 1976

Photo-21  
502 and 506 South Broadway  
view from west

JAN 16 1978



South Hill Historic District  
Lexington  
Fayette County Kentucky

JUN 13 1978

Richard DeCamp  
Lexington-Fayette County  
Historic Commission  
December 20, 1976

JAN 16 1978

Photo-22  
355 and 361 South Broadway  
view from northeast (Worley-  
Allen-Foushee Houses Historic  
District)





South Hill Historic District  
Lexington  
Fayette County Kentucky

JUN 13 1978

Richard DeCamp  
Lexington-Fayette County  
Historic Commission  
December 20, 1976

JAN 16 1978

Photo-23

Coach house behind 355 South  
Broadway, view from Southwest  
(Worley-Allen-Foushee Houses  
Historic District)



South Hill Historic District  
Lexington  
Fayette County Kentucky

JUN 13 1978

Richard DeCamp  
Lexington-Fayette County  
Historic Commission  
December 15, 1976

JAN 16 1978

Photo-24

Samuel Ayres house, 100-102 West  
High, view from northwest (Note  
brick stringer above basement &  
belt at 2nd floor level)



South Hill Historic District  
Lexington  
Fayette County Kentucky

JUN 13 1978

Richard DeCamp  
Lexington-Fayette County  
Historic Commission  
December 15, 1976

JAN 16 1978

Photo-25

Alexander S. Elliott house, 104  
and Higgins-Richardson house,  
108 West High Street, view from  
northeast.



FIRST UNITED  
METHODIST CHURCH

MR. JENNINGS pastor  
C. ROO RUBY organist  
WED. EVENING SERVICE 7:30  
PRIME CANT. 8:00  
SUNDAY SCHOOL 9:45  
WORSHIP 10:30  
DEC. 12  
CHANCEL CHOIR  
MUSIC

South Hill Historic District  
Lexington  
Fayette County Kentucky

JUN 13 1978

Richard DeCamp  
Lexington-Fayette County  
Historic Commission  
December 15, 1976

Photo-26                      JAN 16 1978  
First United Methodist Church  
and parsonage, 200-238 West  
High, view from northeast





South Hill Historic District  
Lexington  
Fayette County Kentucky

JUN 13 1978

Richard DeCamp  
Lexington-Fayette County  
Historic Commission  
December 23, 1976

Photo-27

JAN 16 1978

Sanctuary of First United Method-  
ist Church, 200-238 West High  
view from northwest.



South Hill Historic District  
Lexington  
Fayette County Kentucky

JUN 13 1978

Richard DeCamp  
Lexington-Fayette County  
Historic Commission  
December 15, 1976

Photo-28

JAN 16 1978

Richard Higgins house (Wallace  
Pilkington-Letcher house), 300  
and 302 West High, view from  
North



South Hill Historic District  
Lexington  
Fayette County Kentucky

JUN 13 1978

Richard DeCamp  
Lexington-Fayette County  
Historic Commission  
June 15, 1976

Photo-29

JAN 16 1978

Richard Higgins House  
302 West High, detail of pegged  
window fram on west side of  
house.



South Hill Historic District  
Lexington  
Fayette County Kentucky

JUN 13 1978

Richard DeCamp  
Lexington-Fayette County  
Historic Commission  
December 15, 1976

Photo-30  
John Lowman  
316 West High  
view from east

JAN 16 1978





South Hill Historic District  
Lexington  
Fayette County Kentucky

JUN 13 1978

Richard DeCamp  
Lexington-Fayette County  
Historic Commission  
December 15, 1976

Photo-31

JAN 16 1978

Ohavey Zion Synagogue  
120-124 West Maxwell  
view from northeast



LA CASITA  
Turquoise  
GIFTS

Le Casita  
GIFTS  
TURQUOISE  
MEXICAN IMPORTS

South Hill Historic District  
Lexington  
Fayette County Kentucky

JUN 13 1978

Richard DeCamp  
Lexington-Fayette County  
Historic Commission

June 15, 1976 JAN 16 1978

Photo-32

La Casita Gifts- 208, 210, 212,  
214, 216 West Maxwell, view  
from northeast.



South Hill Historic District  
Lexington  
Fayette County Kentucky

JUN 13 1978

Richard DeCamp  
Lexington-Fayette County  
Historic Commission  
December 23, 1976

Photo-33  
Maxwell St. Christian Church  
234 West Maxwell  
view from northwest

JAN 16 1978



South Hill Historic District  
Lexington  
Fayette County Kentucky

JUN 13 1978

Richard DeCamp  
Lexington-Fayette County  
Historic Commission  
June 15, 1976

JAN 16 1978

Photo-34

Geo. A. Bowyer house, 324 South  
Upper, detail of anthemion iron  
grille in garret window & bracket-  
ed cornice with details of facade.





South Hill Historic District  
Lexington  
Fayette County Kentucky

JUN 13 1978

Richard DeCamp  
Lexington-Fayette County  
Historic Commission  
June 15, 1976

JAN 16 1978

Photo-35

Geo. A. Bowyer house  
324 South Upper , detail of  
console recessed doorway



South Hill Historic District  
Lexington  
Fayette County Kentucky

Richard DeCamp  
Lexington-Fayette County  
Historic Commission  
December 15, 1976

JUN 13 1978

Photo-36  
Thomas Ross house  
328 South Upper  
view from northwest

JAN 16 1978



South Hill Historic District  
Lexington  
Fayette County Kentucky

Richard DeCamp  
Lexington-Fayette County  
Historic Commission  
December 15, 1976

JUN 13 1978

Photo-37  
340 South Upper and John B.  
Johnson house, 344, view from  
northwest.

JAN 16 1978



South Hill Historic District  
Lexington  
Fayette County Kentucky

Richard DeCamp  
Lexington-Jayette County  
Historic Commission  
December 15, 1976

JAN 16 1978

Photo-38

JUN 13 1978

Robert McMullen house  
346 South Upper  
view from northwest





386

South Hill Historic District  
Lexington  
Fayette County Kentucky

Richard DeCamp  
Lexington Fayette County  
Historic Commission  
December 31, 1976

JUN 13 1978

Photo-39  
Sue Arnett cottage  
386 South Upper

JAN 16 1978



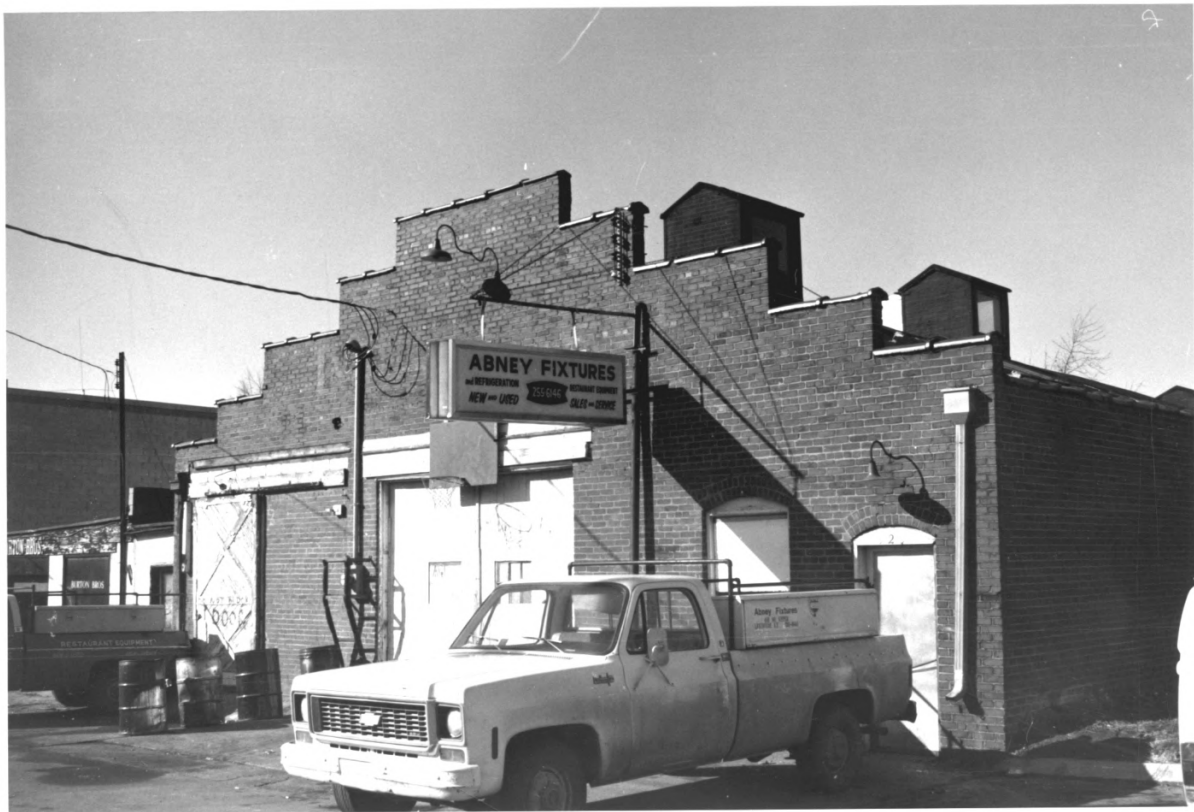
South Hill Historic District  
Lexington  
Fayette County Kentucky

JUN 13 1978

Richard DeCamp  
Lexington-Fayette County  
Historic Commission  
June 15, 1976

JAN 16 1978

Photo-40  
390 South Upper, detail of stone  
arch over 1st-floor window to  
south of entrance.



South Hill Historic District  
Lexington

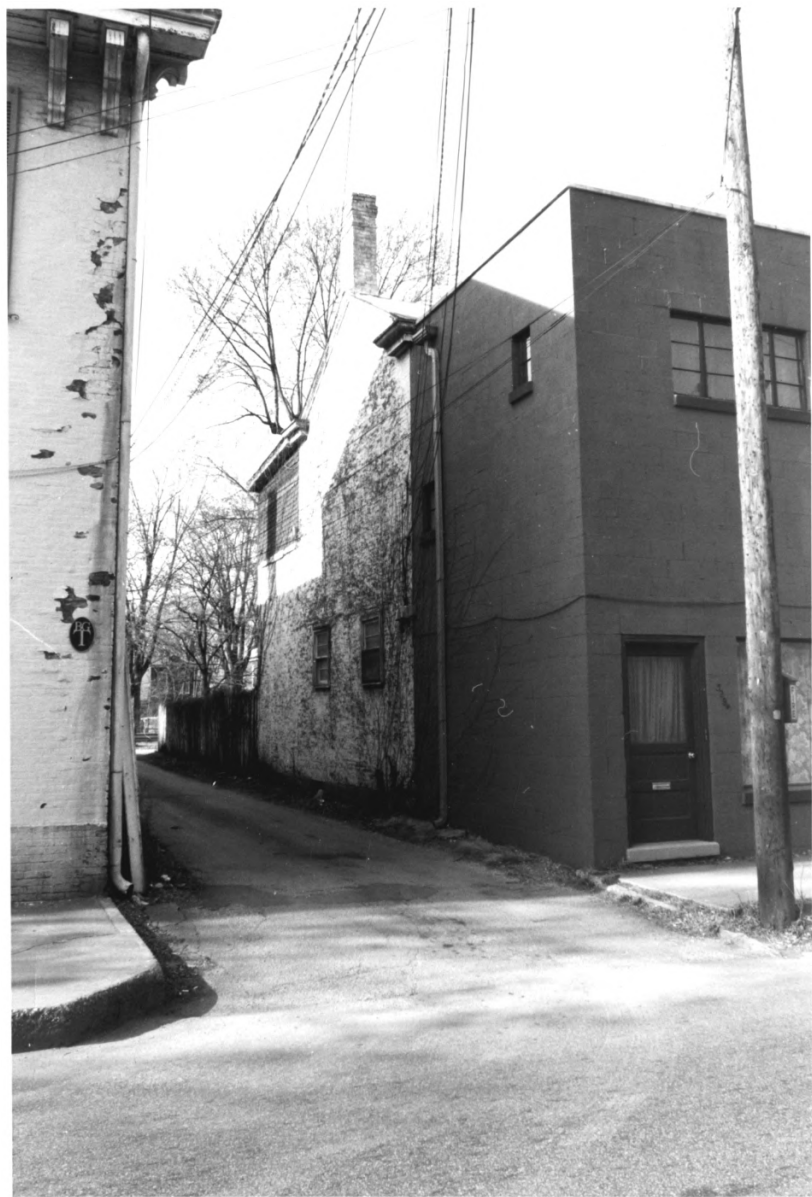
JUN 13 1978

Fayette County Kentucky

Richard DeCamp  
Lexington-Fayette County  
Historic Commission  
December 15, 1976

JAN 16 1978

Photo-41  
Abney Fixtures & Refrigeration  
418 South Upper  
view from southwest





South Hill Historic District  
Lexington  
Fayette County Kentucky

JUN 13 1978

Richard DeCamp  
Lexington-Fayette County  
Historic Commission

JAN 16 1978

Photo-42

Joseph Barbee house, 327 South  
Upper, original house behind con-  
crete addition of south, view  
from southeast.





South Hill Historic District  
Lexington  
Fayette County Kentucky

Richard DeCamp  
Lexington-Fayette County  
Historic Commission  
December 15, 1976

JUN 13 1978

Photo-43  
John P. Aldrich's Lancastrian  
School (Lafayette Academy) 333  
South Upper, view from northeast  
JAN 16 1978



South Hill Historic District  
Lexington  
Fayette County Kentucky

Richard DeCamp  
Lexington-Fayette County  
Historic Commission  
June 15, 1976

JUN 13 1978

Photo-44  
343 South Upper Street  
view from northeast

JAN 16 1978



South Hill Historic District  
Lexington  
Fayette County Kentucky

Richard DeCamp  
Lexington-Fayette County  
Historic Commission  
June 15, 1976

Photo-45  
343 South Upper,  
detail of front iron gate

JAN 16 1978

JUN 13 1978



South Hill Historic District  
Lexington  
Fayette County Kentucky

JUN 13 1978

Richard DeCamp  
Lexington-Fayette County  
Historic Commission  
December 15, 1976

Photo-46  
Elisha Allen house  
347 South Upper  
view from east

JAN 16 1978





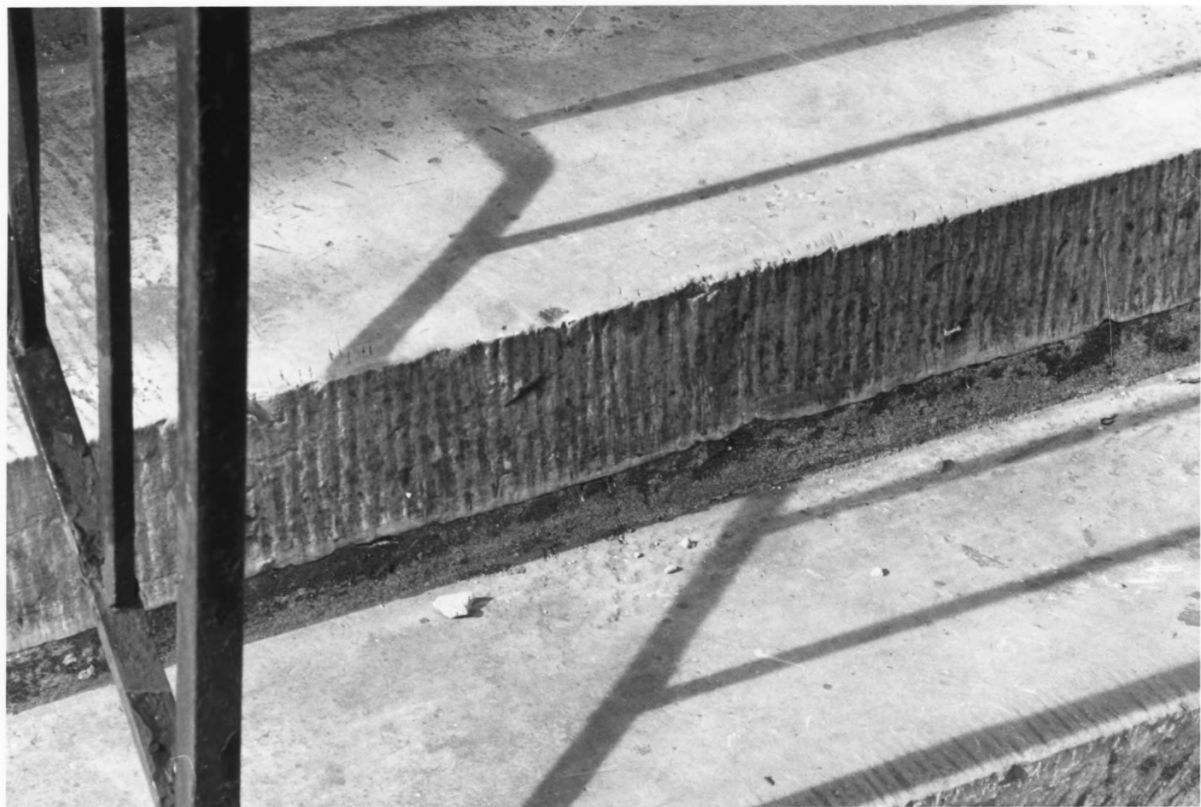
South Hill Historic District  
Lexington  
Fayette County Kentucky

Richard DeCamp  
Lexington-Fayette County  
Historic Commission

JUN 13 1978

December 15, 1976 JAN 16 1978

Photo-47  
355 South Upper; Warner Hawkins  
house, 359; John Stilfield house,  
361-363; view from northeast



South Hill Historic District  
Lexington  
Fayette County Kentucky

JUN 13 1978

Richard DeCamp  
Lexington-Fayette County  
Historic Commission  
June 15, 1976

JAN 16 1978

Photo-48  
Joseph Pulliam house, 371 South  
Upper, detail of ribbed stone steps  
of front stoop.



South Hill Historic District  
Lexington  
Fayette County Kentucky

F  
Richard DeCamp  
Lexington-Fayette County  
Historic Commission  
December 15, 1976

JUN 13 1978

Photo-49  
David Dodge double house  
375-377 & Joseph Pulliam house  
371 South Upper, view from  
northeast

JAN 16 1978



South Hill Historic District  
Lexington  
Fayette County Kentucky

Richard DeCamp  
Lexington-Fayette County  
Historic Commission

December 15, 1976

JUN 13 1978

Photo-50  
417 and 419 South Upper  
view from northeast

JAN 16 1978





South Hill Historic District  
Lexington

Fayette County Kentucky

JUN 13 1978

Richard DeCamp  
Lexington-Fayette County  
Historic Commission  
December 20, 1976

Photo-51  
part of Rokeby Hall  
318 South Mill  
view from west

JAN 16 1978



South Hill Historic District  
Lexington  
Fayette County Kentucky

Richard DeCamp  
Lexington-Fayette County  
Historic Commission  
June 15, 1976

JAN 16 1978

Photo-52  
Thos. J. Wilson house  
336 South Mill  
view from west

JUN 13 1978



South Hill Historic District  
Lexington  
Fayette County Kentucky

Richard DeCamp  
Lexington, Fayette County  
Historic Commission  
June 15, 1976

Photo-53  
John Scott house  
330 South Mill  
view from west

JAN 16 1978

JUN 13 1978



South Hill Historic District  
Lexington  
Fayette County Kentucky

Richard DeCamp  
Lexington-Fayette County  
Historic Commission  
June 15, 1976

Photo-54  
John Scott house  
328 South Mill  
view from northwest

JAN 16 1978

JUN 13 1978





South Hill Historic District

Lexington

Fayette County Kentucky

JUN 13 1978

Richard DeCamp

Lexington-Fayette County

Historic Commission

December 23, 1976

Photo-55

Entrance to Mack Alley from  
South Upper Street, view from  
east (330 1/2 South Mill on left  
in background)

JAN 16 1978



South Hill Historic District  
Lexington  
Fayette County Kentucky

JUN 13 1978

Richard DeCamp  
Lexington-Fayette County  
Historic Commission

Photo-56  
house on Mack Alley  
370 1/2 South Mill  
view from east

JAN 16 1978



South Hill Historic District  
Lexington  
Fayette County Kentucky

JUN 13 1978

Richard DeCamp  
Lexington-Fayette County  
Historic Commission  
December 20, 1976

JAN 16 1978

Photo-57  
originally carriage house of  
Rokeby Hall, 340 South Mill  
view from southwest



South Hill Historic District  
Lexington  
Fayette County Kentucky

JUN 13 1978

Richard DeCamp  
Lexington-Fayette County  
Historic Commission  
December 20, 1976

Photo-58  
Charles McPheeters house  
352 South Mill  
view from southwest

JAN 16 1978





South Hill Historic District  
Lexington  
Fayette County Kentucky

Richard DeCamp  
Lexington-Fayette County  
Historic Commission  
December 20, 1976

Photo-59  
358 South Mill  
view from west

JUN 13 1978

JAN 16 1978



South Hill Historic District  
Lexington  
Fayette County Kentucky

JUN 13 1978

Richard DeCamp  
Lexington-Fayette County  
Historic Commission  
December 20, 1976

Photo-60  
James Trotter house  
362 South Mill  
view from northwest

JAN 16 1978



South Hill Historic District  
Lexington  
Fayette County Kentucky

Richard DeCamp  
Lexington-Fayette County  
Historic Commission  
December 20, 1976

JUN 13 1978

Photo-61  
Dudley School  
380 South Mill  
view from northwest

JAN 16 1978



South Hill Historic District  
Lexington  
Fayette County Kentucky

Richard DeCamp  
Lexington-Fayette County  
Historic Commission  
December 20, 1976

JUN 13 1978

Photo-62  
408 and 412 South Mill  
view from northwest

JAN 16 1978





South Hill Historic District  
Lexington  
Fayette County Kentucky

Richard DeCamp  
Lexington-Fayette County  
Historic Commission  
December 20, 1976

JUN 13 1978

Photo-63  
Thomas Huggins rental duplex,  
416-418 South Mill  
view from northwest

JAN 16 1978



South Hill Historic District  
Lexington  
Fayette County Kentucky'

Richard DeCamp  
Lexington-Fayette County  
Historic Commission  
December 20, 1976

JUN 13 1978

Photo-64  
Thomas Huggins' rental duplex  
422, 426 South Mill  
view from northwest

JAN 16 1978



South Hill Historic District  
Lexington  
Fayette County Kentucky

Richard DeCamp  
Lexington-Fayette County  
Historic Commission  
December 20., 1976

JUN 13 1978

Photo-65  
J. B. Wilgus house  
432 South Mill  
view from northwest

JAN 16 1978



South Hill Historic District  
Lexington  
Fayette County Kentucky

Richard DeCamp  
Lexington-Fayette County  
Historic Commission  
December 15, 1976

JUN 13 1978

Photo-66  
Rev. Adam Rankin house  
317 South Mill  
view from east

JAN 16 1978





South Hill Historic District  
Lexington  
Fayette County Kentucky

Richard DeCamp  
Lexington-Fayette County  
Historic Commission  
December 15, 1976

JUN 13 1978

JAN 16 1978

Photo-67  
James Lemon double house  
329 & 331 South Mill  
view from northeast



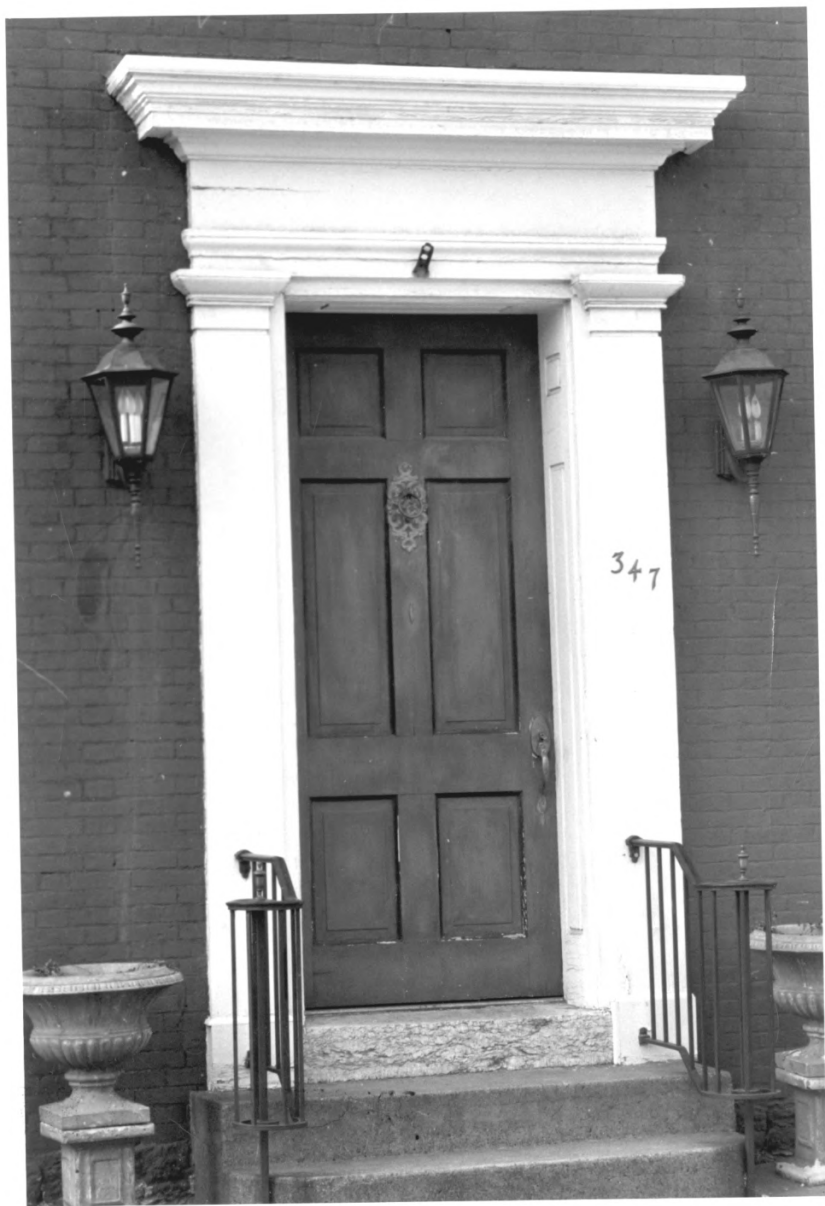
337

South Hill Historic District  
Lexington  
Fayette County Kentucky

Richard DeCamp JUN 13 1978  
Lexington-Fayette County  
Historic Commission  
December 31, 1976

Photo-68  
William C. Bell house  
337 South Mill

JAN 16 1978



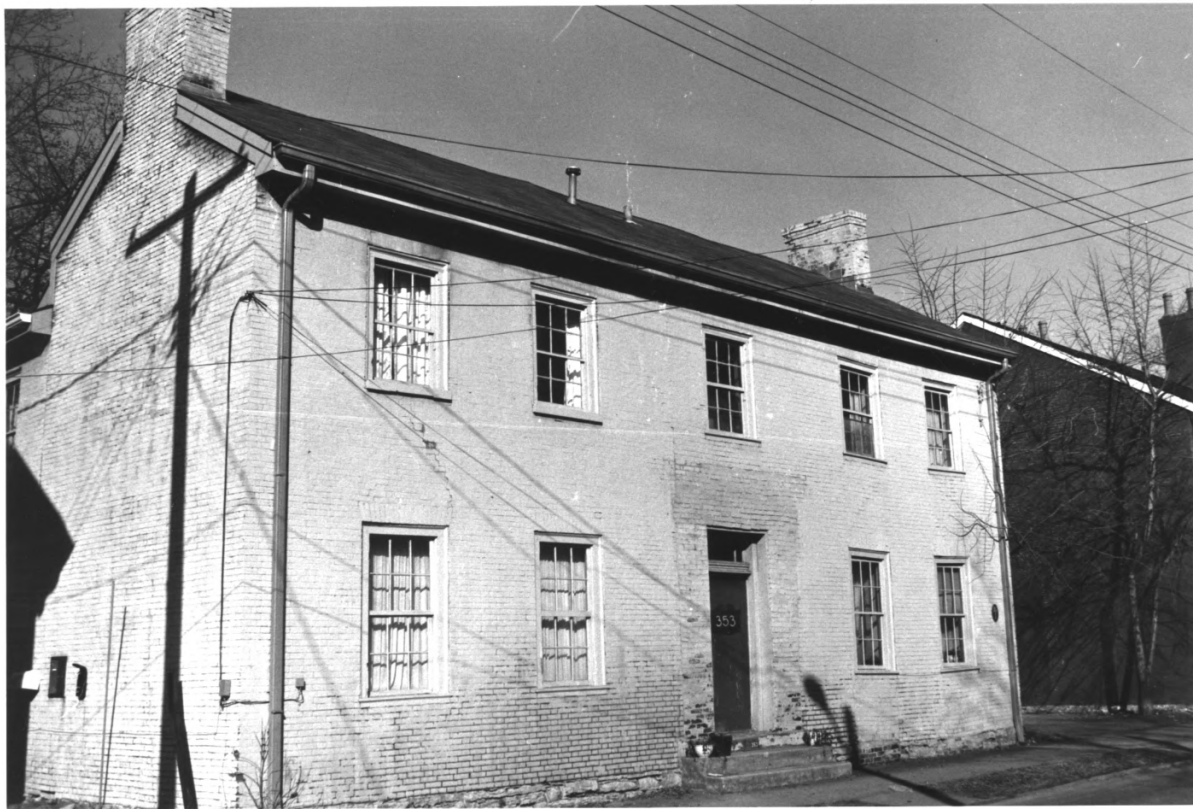
South Hill Historic District  
Lexington  
Fayette County Kentucky

Richard DeCamp  
Lexington-Fayette County  
Historic Commission  
June 15, 1976

JUN 13 1978

Photo-69  
John W. Russell house  
347 South Mill  
Greek Revival front door

JAN 16 1978



South Hill Historic District  
Lexington  
Fayette County Kentucky

JUN 13 1978

Richard DeCamp  
Lexington-Fayette County  
Historic Commission  
December 20, 1976

JAN 16 1978

Photo=70  
Leven Showerd house  
353 South Mill  
view from southeast





South Hill Historic District  
Lexington  
FayetteCounty Kentucky

JUN 13 1978

Richard DeCamp  
Lexington-Fayette County  
Historic Commission  
June 15, 1976

Photo-71

JAN 16 1978

Leven Showerd house

353 South Mill

detail of window sill with nosing  
on facade



South Hill Historic District

Lexington

JUN 13 1978

Fayette County Kentucky

Richard DeCamp

Lexington-Fayette County

Historic Commission

December 20, 1976

Photo-72

William Poindexter house

359 South Mill

view from east

JAN 16 1978



South Hill Historic District  
Lexington  
Fayette County Kentucky

Richard DeCamp  
Lexington-Fayette County  
Historic Commission  
December 20, 1976

JUN 13 1978

Photo-73  
Cornelius Welman house  
411 South Mill  
view from southeast

JAN 16 1978



South Hill Historic District  
Lexington  
Fayette County Kentucky

JUN 13 1978

Richard DeCamp  
Lexington-Fayette County  
Historic Commission  
1974

Photo-74  
431 South Mill  
view from east

JAN 16 1978





South Hill Historic District  
Lexington  
Fayette County Kentucky

JUN 13 1978

Richard DeCamp  
Lexington-Fayette County  
Historic Commission  
December 20, 1976

Photo-75  
Maj. William S. Dallam house  
505 South Mill  
view from northeast

JAN 16 1978



South Hill Historic District  
Lexington  
Fayette County Kentucky

JUN 13 1978

Richard DeCamp  
Lexington-Fayette County  
Historic Commission

June 15, 1976

JAN 16 1978

Photo-76

Major William S. Dallam house  
505 South Mill  
detail of chamfered post on porch  
at rear of house.



South Hill Historic District  
Lexington  
Fayette County Kentucky

Richard DeCamp  
Lexington-Fayette County  
Historic Commission  
December 20, 1976

JUN 13 1978

Photo-77  
515 & 513 South Mill  
view from northeast

JAN 16 1978