

United States Department of the Interior
National Park Service

National Register of Historic Places
Continuation Sheet

Darnall Place
Montgomery County
Maryland

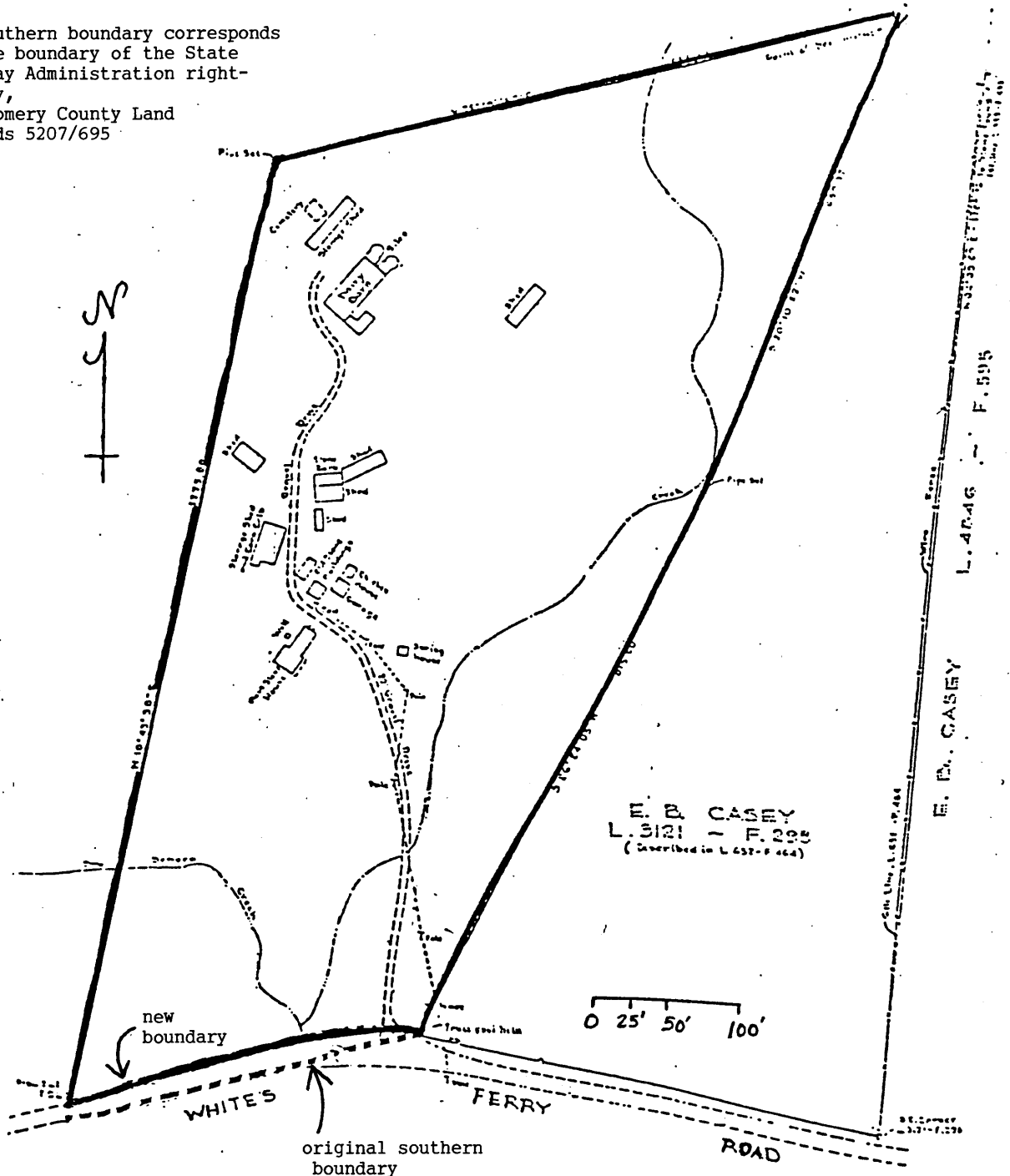
M:18-21

Section number 10 Page A

May, 1989

BOUNDARY MAP acreage: 17.7

new southern boundary corresponds
to the boundary of the State
Highway Administration right-
of-way,
Montgomery County Land
Records 5207/695



United States Department of the Interior
National Park Service

National Register of Historic Places

Continuation Sheet

Section number _____ Page _____

Darnall Place (Boundary Decrease)
Montgomery County, MARYLAND

accept Decrease Patrick Andrews - 7/19/89
for Keeper of the National Register