



E.F. NUNN & CO. 1878 ... LEFT TO RIGHT: E.F. NUNN, L.L. ANDERSON, H.C. McNEES,
DR. R.T. YOE, W.H. ANDERSON, E.S. LITTLE and K. GREEN ...

CENTRAL SHUQUALAK HISTORIC DISTRICT
SHUQUALAK, MISSISSIPPI

Central Shuqualak Historic District/Noxubee/Co., MS



MAIN STREET, LOOKING NORTH, SHUQUALAK, MISS.

1910

CENTRAL SHUQUALAK HISTORIC DISTRICT
SHUQUALAK, MISSISSIPPI



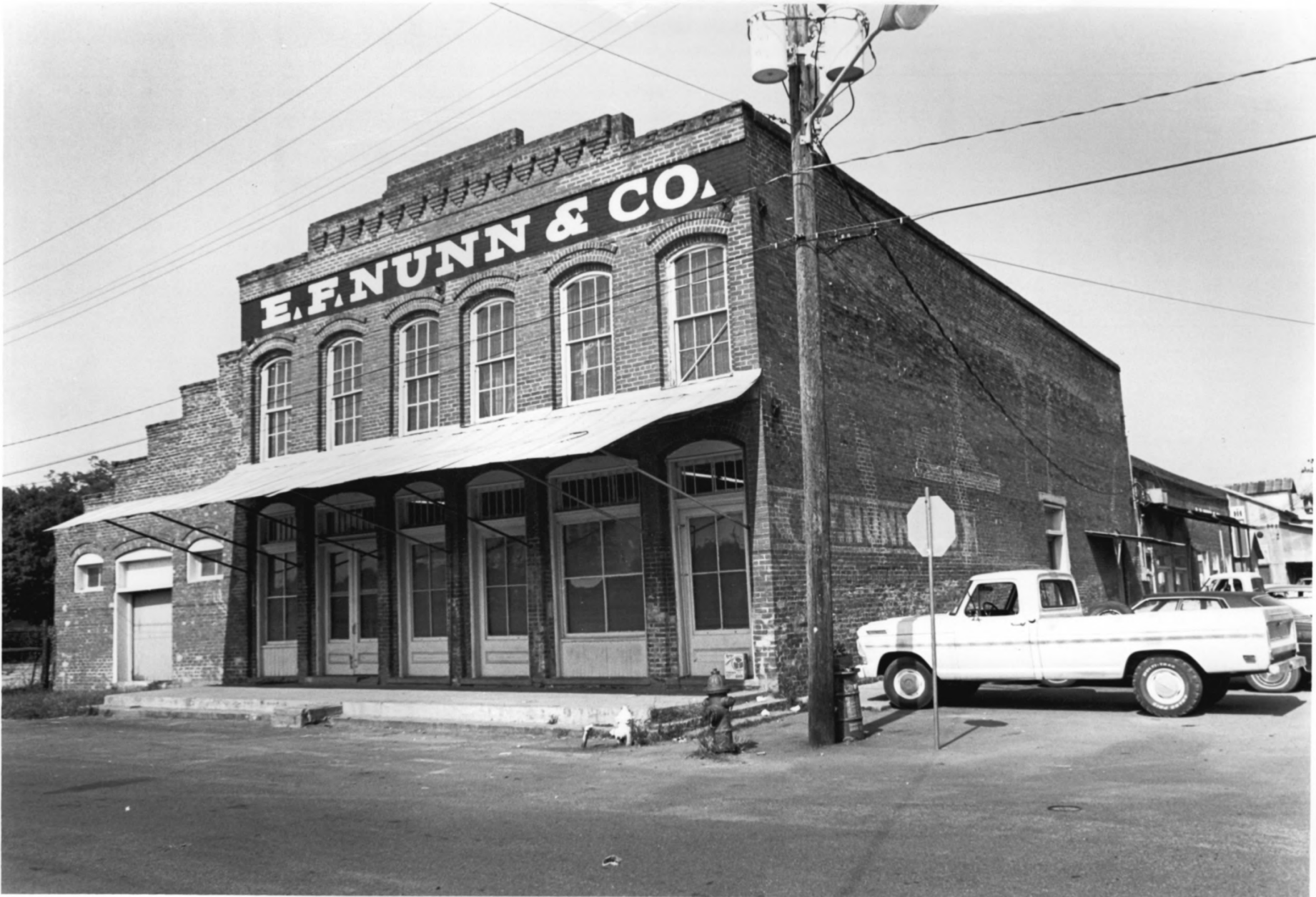
PUBLIC SCHOOL, SHUQUALAK, MISS.

1910

CENTRAL SHUQUALAK HISTORIC DISTRICT

Noxubee Co. MS

E. F. NUNN & CO.



Central Shuqualak Historic District/Noxubee Co., MS

E.F. NUNN & CO. #1

CENTRAL SHUQUALAK HISTORIC DISTRICT

SHUQUALAK, MISSISSIPPI

DENNY MURPHY 8/15/79

OCT 25 1979

PLANNING & DESIGN ASSOCIATES PA

3515 GLENWOOD AVE. RALEIGH N.C.

southwest corner looking northeast #J21

AUG 26 1980



BANK



JERNIGAN'S
We cloth & feed the entire f



Central Shuqualak Historic District/Noxubee Co., MS

OLD BANK BUILDING #16

CENTRAL SHUQUALAK HISTORIC DISTRICT

SHUQUALAK, MISSISSISSI

DENNY MURPHY 8/15/79

PLANNING & DESIGN ASSOCIATES, PA

3515 GLENWOOD AVE. RALEIGH, N.C.

front facade looking west #F11

OCT 25 1979



Mobilgas
MOTOR OIL SERVICE

COURIER

Central Shuqualak Historic District/Noxubee Co MS 1

OLD GAS STATION #22

CENTRAL SHUQUALAK HISTORIC DISTRICT

SHUQUALAK, MISSISSIPPI

OCT 25 1979

DENNY MURPHY 8/15/79

PLANNING & DESIGN ASSOCIATES, PA

3515 GLENWOOD AVE. RALEIGH, N.C.

Mulberry Street side looking northwest #16



Central Shuqualak Historic District/Noxubee Co., MS

left to right

FLOORE REPAIR SHOP #10

DOLLY'S BEAUTY SHOP #11

HALE'S BARBER SHOP #12

CENTRAL SHUQUALAK HISTORIC DISTRICT

SHUQUALAK, MISSISSIPPI

DENNY MURPHY 8/14/79

OCT 25 1979

PLANNING & DESIGN ASSOCIATES PA

3515 GLENWOOD AVE. RALEIGH, N.C.

Pine Street Facades looking northeast #F22



STATES POST OFFICE
SHUQUALAN MISSISSIPPI 39361

Central Shuqualak Historic District/Noxubee Co., MS

left to right

LITTLE GIANT LAUNDRYMAT (INTRUSION) #5

F.H. HALMILTON STORE #6

HENSLEIGH-TUBBS STORE #7

P.T. BETHENY DRY GOODS #8

POST OFFICE BUILDING (INTRUSION) #9

CENTRAL SHUQUALAK HISTORIC DISTRICT

SHUQUALAK, MISSISSIPPI

OCT 25 1979

DENNY MURPHY 8/14/79

PLANNING & DESIGN ASSOCIATES PA

3515 GLENWOOD AVE. RALEIGH, N.C.

Mulberry Street facades, looking southwest #I27



R.L. ANDERSON STORE #2

CENTRAL SHUQUALAK HISTORIC DISTRICT

SHUQUALAK, MISSISSIPPI

DENNY MURPHY 8/15/79

OCT 25 1979

PLANNING & DESIGN ASSOCIATES PA

3515 GLENWOOD AVE. RALEIGH, N.C.

northwest corner looking southeast #J20

AUG 26 1980

Central Shuqualak Historic District
Noxubee Co. MS



TWIN HEADS
GILSTERS
BEST FLOUR



Westinghouse
APPLIANCES

Coca-Cola
PRINCE
MERCANTILE COMPANY

THE GREAT BREAD BAKERY

Central Shuqualak Historic Dist/ Noxubee Co., MS

PRINCE MERCANTILE CO. #21

CENTRAL SHUQUALAK HISTORIC DISTRICT

SHUQUALAK, MISSISSIPPI

DENNY MURPHY 8/15/79

OCT 25 1979

PLANNING & DESIGN ASSOCIATES PA

3515 GLENWOOD AVE. RALEIGH, N.C.

southeast corner looking northwest #F33



JEDRIGAY'S

PHILCO

PHILCO
A REFRIG

MARTIN DRUG CO.

Central Shuqualak Historic Dist./Noxubee Co., MS

left to right

HEALTH CENTER BUILDING (BARRETTS STORE) #15

OLD BANK BUILDING #16

JERNIGANS LAUNDRYMAT #17

LEDBETTERS FURNITURE & APPLIANCE #18

CITY DRUG STORE (white paint on brick) #19

PEAT FLORA STORE #20

CENTRAL SHUQUALAK HISTORIC DISTRICT

SHUQUALAK, MISSISSIPPI

DENNY MURPHY 8/15/79

OCT 25 1979

PLANNING & DESIGN ASSOCIATES PA

3515 GLENWOOD AVE. RALEIGH, N.C.

Mulberry Street facades looking southwest #I35



Central Shuqualak Historic District/Noxubee Co., MS

left to right

HEALTH CENTER BUILDING; (BARRETT'S STORE #15

OLD BANK BUILDING #16

JERNIGANS LAUNDRYMAT #17

LEDBETTERS FURNITURE & APPLIANCE #18

CENTRAL SHUQUALAK HISTORIC DISTRICT

SHUQUALAK, MISSISSIPPI

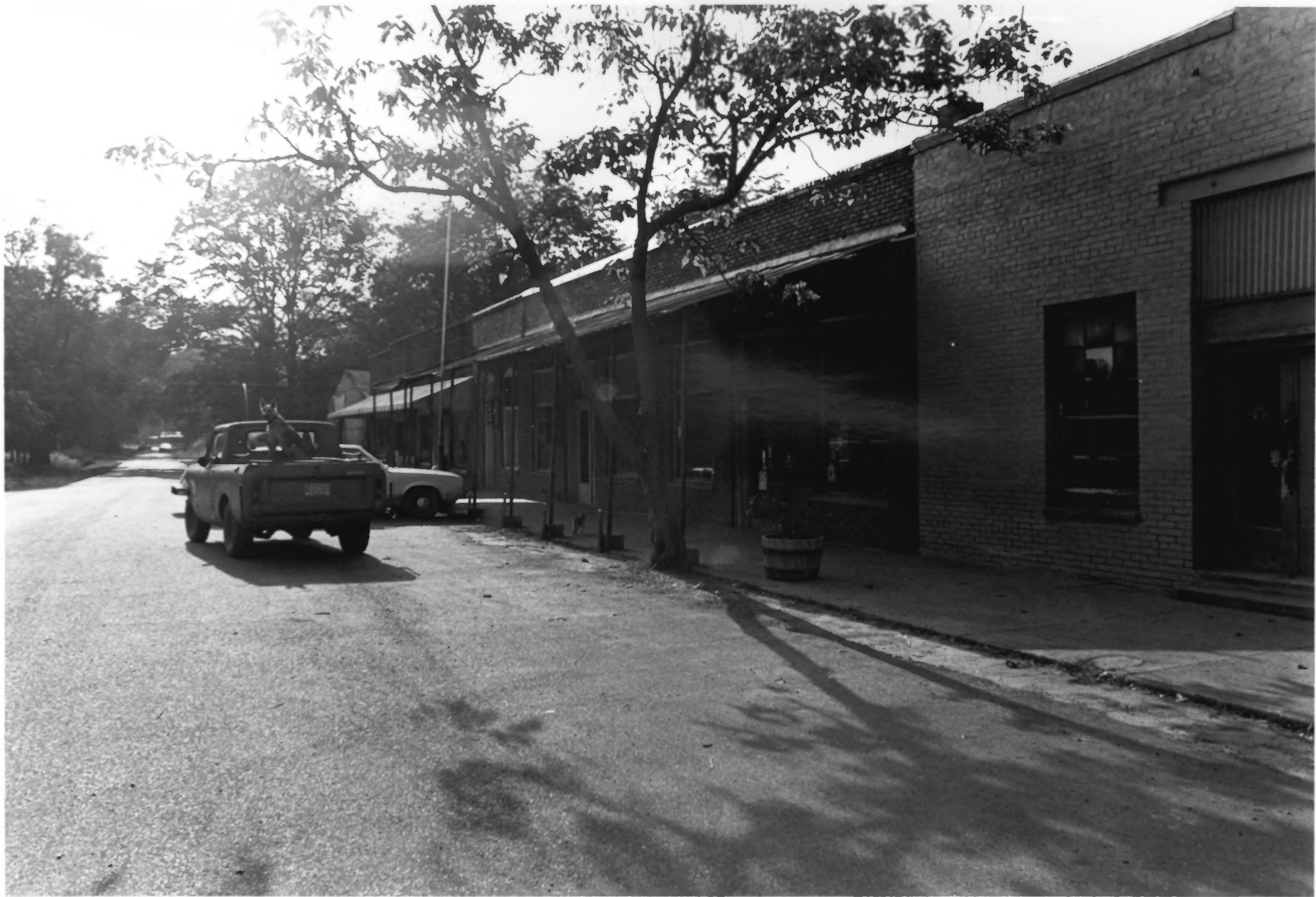
DENNY MURPHY 8/15/79

OCT 25 1979

PLANNING & DESIGN ASSOCIATES PA

3515 GLENWOOD AVE. RALEIGH, N.C.

Mulberry Street facades looking northwest #F14



Central Shuqualak Historic District/Noxubee Co., MS

left to right

FLOORE REPAIR SHOP #10

DOLLY'S BEAUTY SHOP #11

HALE'S BARBER SHOP #12

TOWN HALL #13

DICK FLORA STORE #14

(side entry #15)

CENTRAL SHUQUALAK HISTORIC DISTRICT

SHUQUALAK, MISSISSIPPI

DENNY MURPHY 8/15/79

OCT 25 1979

PLANNING & DESIGN ASSOCIATES PA

3515 GLENWOOD AVE. RALEIGH, N.C.

Pine Street facades looking west #F16



Central Shuqualak Historic District/Noxubee Co., MS

DICK FLORA STORE (typical 1920's interior)
CENTRAL SHUQUALAK HISTORIC DISTRICT
SHUQUALAK, MISSISSIPPI
DENNY MURPHY 8/15/79
PLANNING & DESIGN ASSOCIATES PA
3515 GLENWOOD AVE. RALEIGH, N.C.
interior looking toward frony #H26a

OCT 25 1979



Central Shuqualak Historic District/Noxubee Co., MS

Old Bank Building #16
Central Shuqualak Historic District
Shuqualak, Mississippi
Denny Murphy 8/16/79
Planning & Design Associates, PA
3515 Glenwood Ave. Raleigh, N.C.
Interior views #H20&G18

OCT 25 1979



Freeman House #25

Central Shuqualak Historic District

Shuqualak, Mississippi

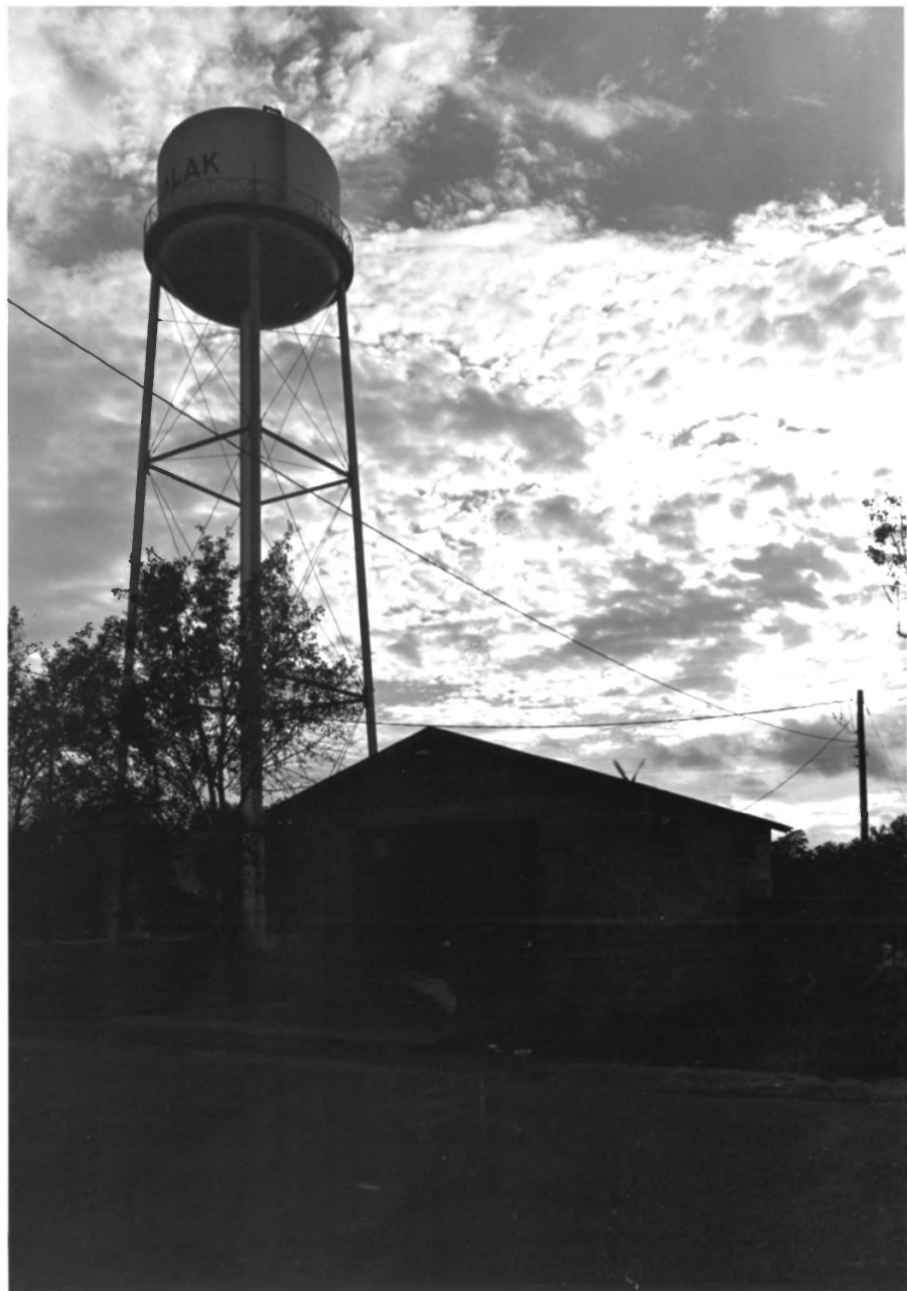
Ken P'Pool *Nowhee Co.* OCT 25 1979

Mississippi Statewide Survey

Archives & History, Jackson, Mississippi

McNees Street facade, looking east #915-34

15/18



Firehouse (one stall) w/tower #27

Central Shuqualak Historic District

Shuqualak, Mississippi

November CO-

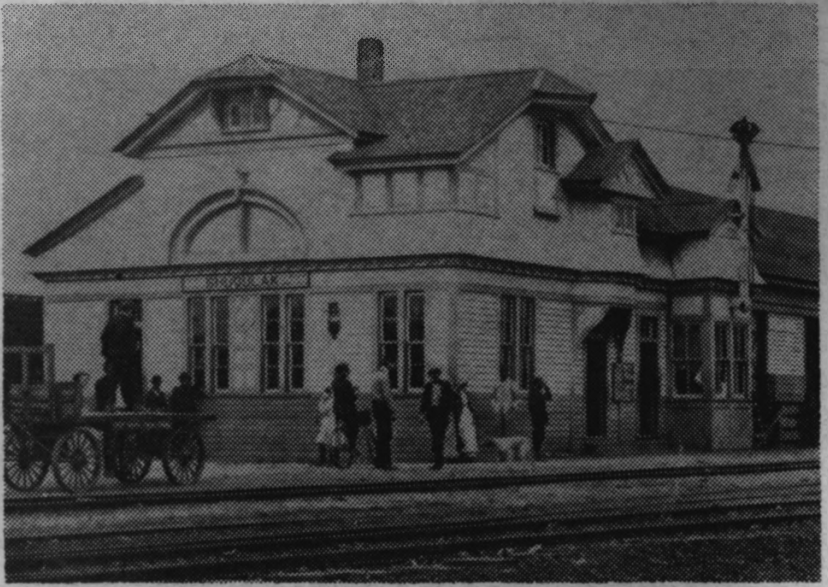
Richard Andrews - September 1979

Planning & Design Associates, Raleigh, N.C.

McNees St. facade looking west #N3

OCT 25 1979

16/18



THE OLD DEPOT — Photographed in 1915 when the trains were running often from Mobile to St. Louis and smack through the center of Shuqualak.

CENTRAL SHUQUALAK HISTORIC DISTRICT
SHUQUALAK, MISSISSIPPI

OCT 25 1979

Nakubee Co.

7/18



CENTRAL SHUQUALAK HISTORIC DISTRICT

SHUQUALAK, MISSISSIPPI ca. 1900 OCT 25 1979

Wexler Co. 18/8