



FORT HALL,
IDAHO



(Fort Hall, Idaho
Monument Marking Site of Fort

Neg. 601

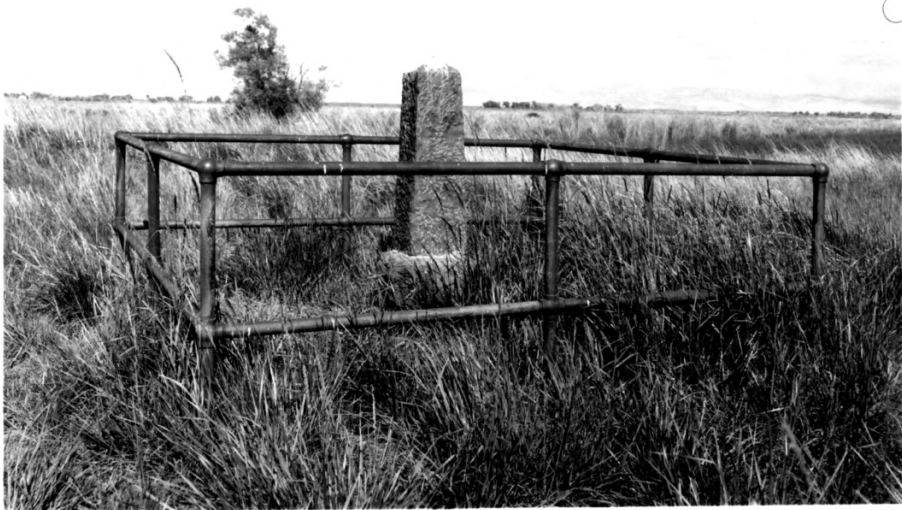
N.P.S. Photo, 1958



Fort Hall, Idaho
Monument Marking Site of Fort

Neg. 602

N.P.S. Photo, 1958



Fort Hall Site. A small marker on the site of the famous way station of the Oregon Trail. Only low mounds remain.

NATIONAL HISTORIC LANDMARK